

# StarWind Virtual SAN<sup>®</sup>

## Providing HA storage repositories for XenServer 7.x

2026

TECHNICAL PAPERS



## Trademarks

“StarWind”, “StarWind Software” and the StarWind and the StarWind Software logos are registered trademarks of StarWind Software. “StarWind LSFS” is a trademark of StarWind Software which may be registered in some jurisdictions. All other trademarks are owned by their respective owners.

## Changes

The material in this document is for information only and is subject to change without notice. While reasonable efforts have been made in the preparation of this document to assure its accuracy, StarWind Software assumes no liability resulting from errors or omissions in this document, or from the use of the information contained herein. StarWind Software reserves the right to make changes in the product design without reservation and without notification to its users.

## Technical Support and Services

If you have questions about installing or using this software, check this and other documents first - you will find answers to most of your questions on the [Technical Papers](#) webpage or in [StarWind Forum](#). If you need further assistance, please [contact us](#) .

## About StarWind

StarWind is a pioneer in virtualization and a company that participated in the development of this technology from its earliest days. Now the company is among the leading vendors of software and hardware hyper-converged solutions. The company's core product is the years-proven StarWind Virtual SAN, which allows SMB and ROBO to benefit from cost-efficient hyperconverged IT infrastructure. Having earned a reputation of reliability, StarWind created a hardware product line and is actively tapping into hyperconverged and storage appliances market. In 2016, Gartner named StarWind “Cool Vendor for Compute Platforms” following the success and popularity of StarWind HyperConverged Appliance. StarWind partners with world-known companies: Microsoft, VMware, Veeam, Intel, Dell, Mellanox, Citrix, Western Digital, etc.

## Copyright ©2009-2018 StarWind Software Inc.

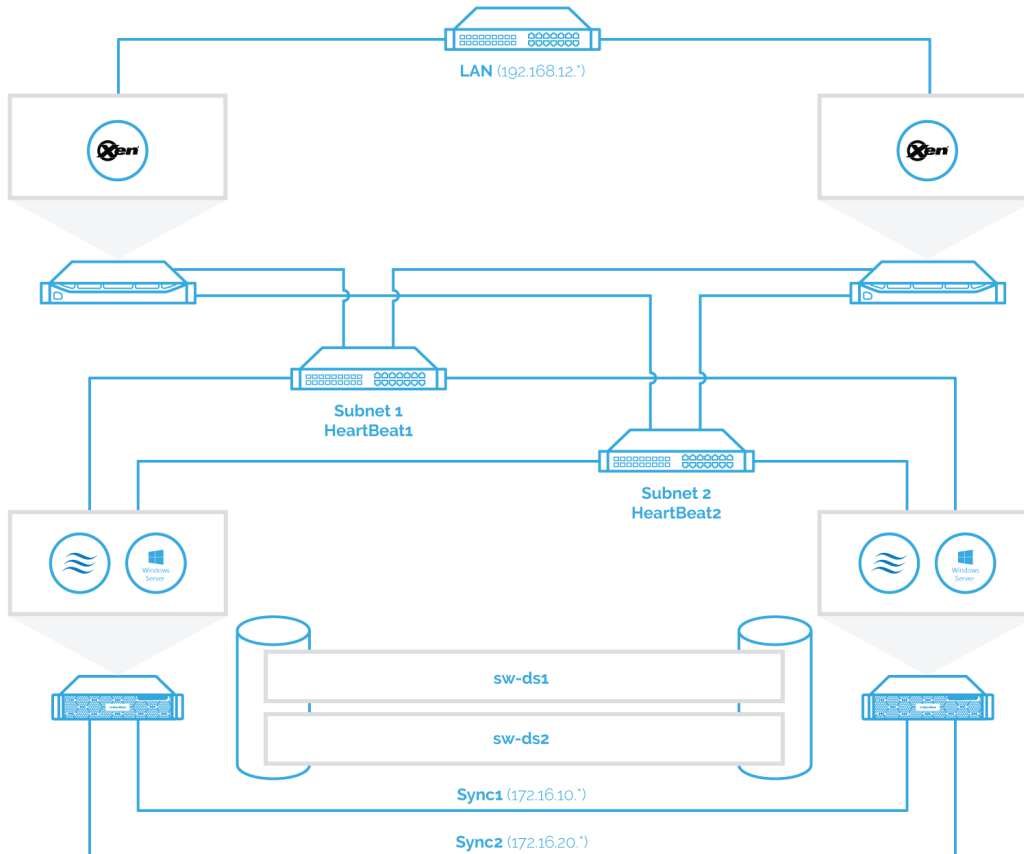
No part of this publication may be reproduced, stored in a retrieval system, or transmitted in any form or by any means, electronic, mechanical, photocopying, recording or otherwise, without the prior written consent of StarWind Software.

## Introduction

Traditionally XenServer Pool requires shared storage to guarantee data safety, allow virtual machines migration, enable continuous application availability and eliminate any single point of failure within an IT environment.

NOTE: Hyperconverged scenario is not officially supported with Citrix XenServer.

The network diagram below illustrates the system configuration.



## Starwind Vsan System Requirements

Prior to installing StarWind Virtual SAN, please make sure that the system meets the requirements, which are available via the following link:

<https://www.starwindsoftware.com/system-requirements>

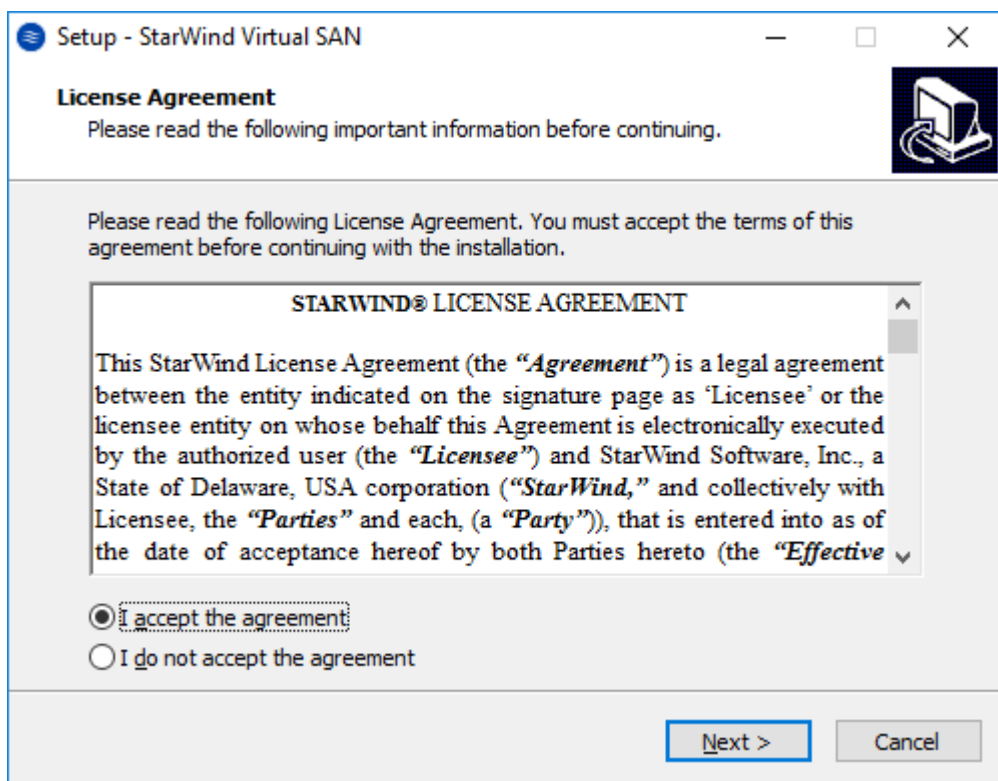
Recommended RAID settings for HDD and SSD disks:

<https://knowledgebase.starwindsoftware.com/guidance/recommended-raid-settings-for-hdd-and-ssd-disks/>

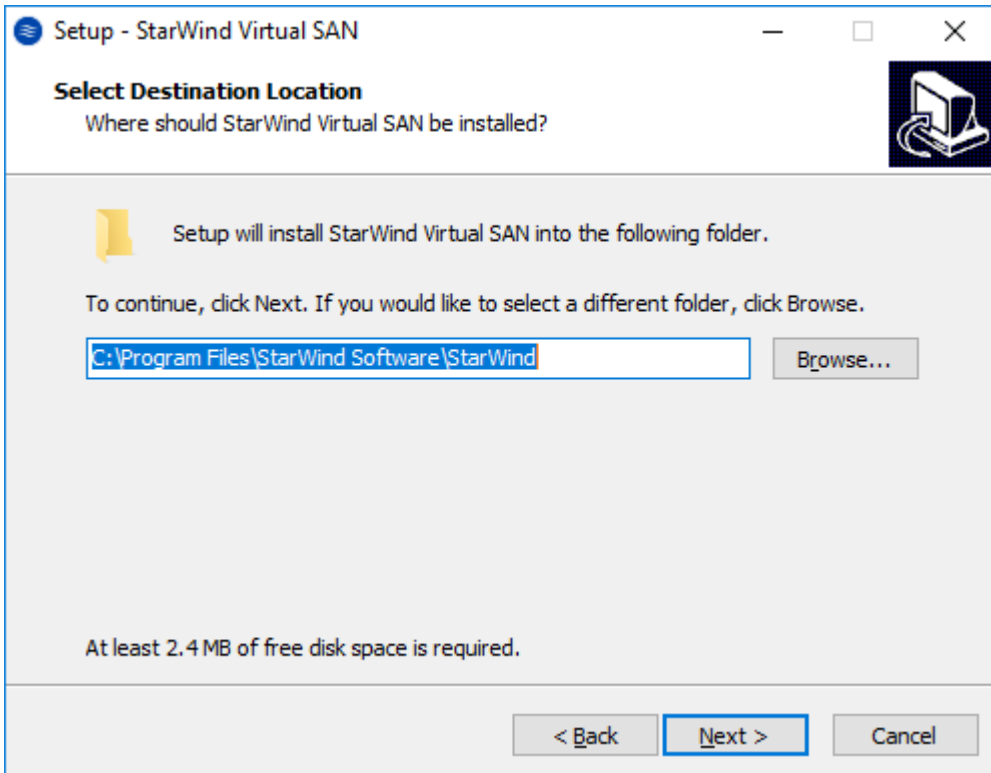
Please read StarWind Virtual SAN Best Practices document for additional information:  
<https://www.starwindsoftware.com/resource-library/starwind-virtual-san-best-practices>

## Installing Starwind Vsan For Hyper-V

1. Download the StarWind setup executable file from the StarWind website:  
<https://www.starwind.com/registration-starwind-virtual-san>
2. Launch the downloaded setup file on the server to install StarWind Virtual SAN or one of its components. The Setup wizard will appear. Read and accept the License Agreement.

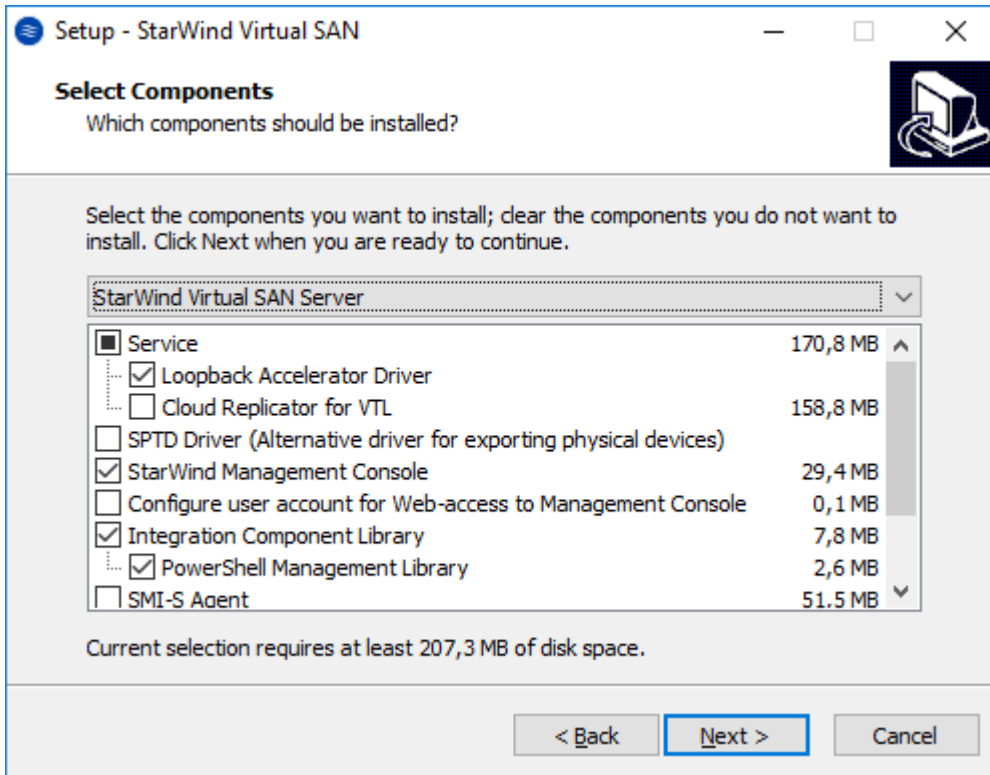


3. Carefully read the information about the new features and improvements. Red text indicates warnings for users that are updating the existing software installations.
4. Select Browse to modify the installation path if necessary. Click on Next to continue.

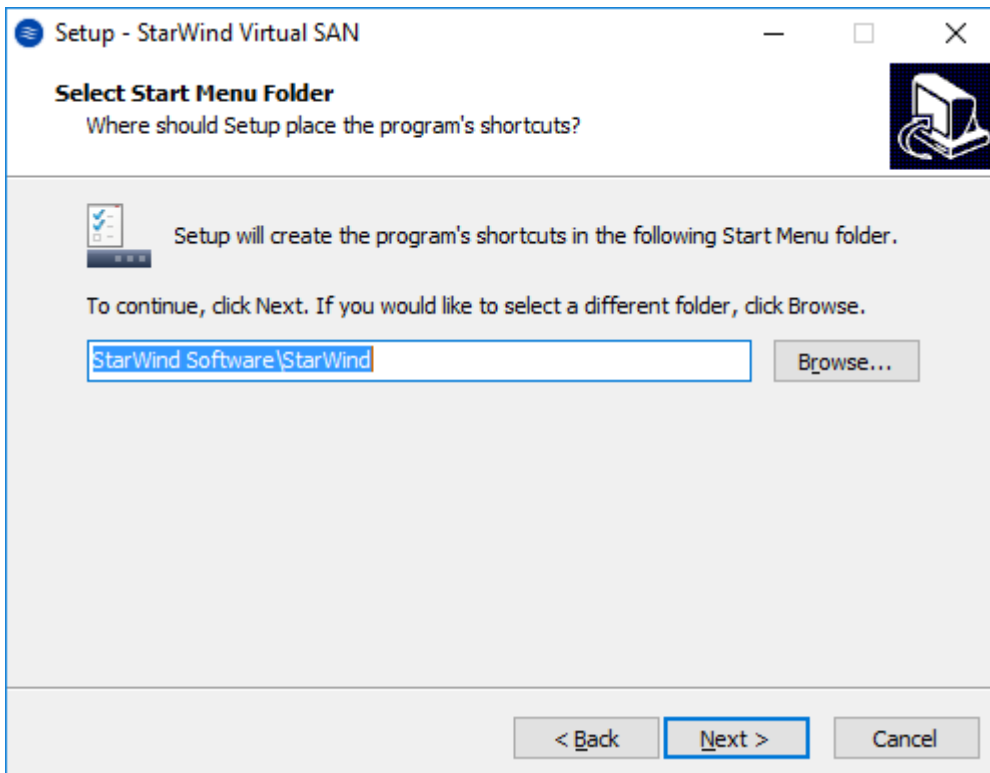


5. Select the following components for the minimum setup:

- StarWind Virtual SAN Service. The StarWind Virtual SAN service is the “core” of the software. It can create iSCSI targets as well as share virtual and physical devices. The service can be managed from StarWind Management Console on any Windows computer that is on the same network. Alternatively, the service can be managed from StarWind Web Console deployed separately.
- StarWind Management Console. Management Console is the Graphic User Interface (GUI) part of the software that controls and monitors all storage-related operations (e.g., allows users to create targets and devices on StarWind Virtual SAN servers connected to the network).  
NOTE: To manage StarWind Virtual SAN installed on a Windows Server Core edition with no GUI, StarWind Management Console should be installed on a different computer running the GUI-enabled Windows edition.



6. Specify Start Menu Folder.



7. Enable the checkbox if a desktop icon needs to be created. Click on Next to continue.

8. When the license key prompt appears, choose the appropriate option:

- request time-limited fully functional evaluation key.
- request FREE version key.
- relect the previously purchased commercial license key.

9. Click on the Browse button to locate the license file.

10. Review the licensing information.

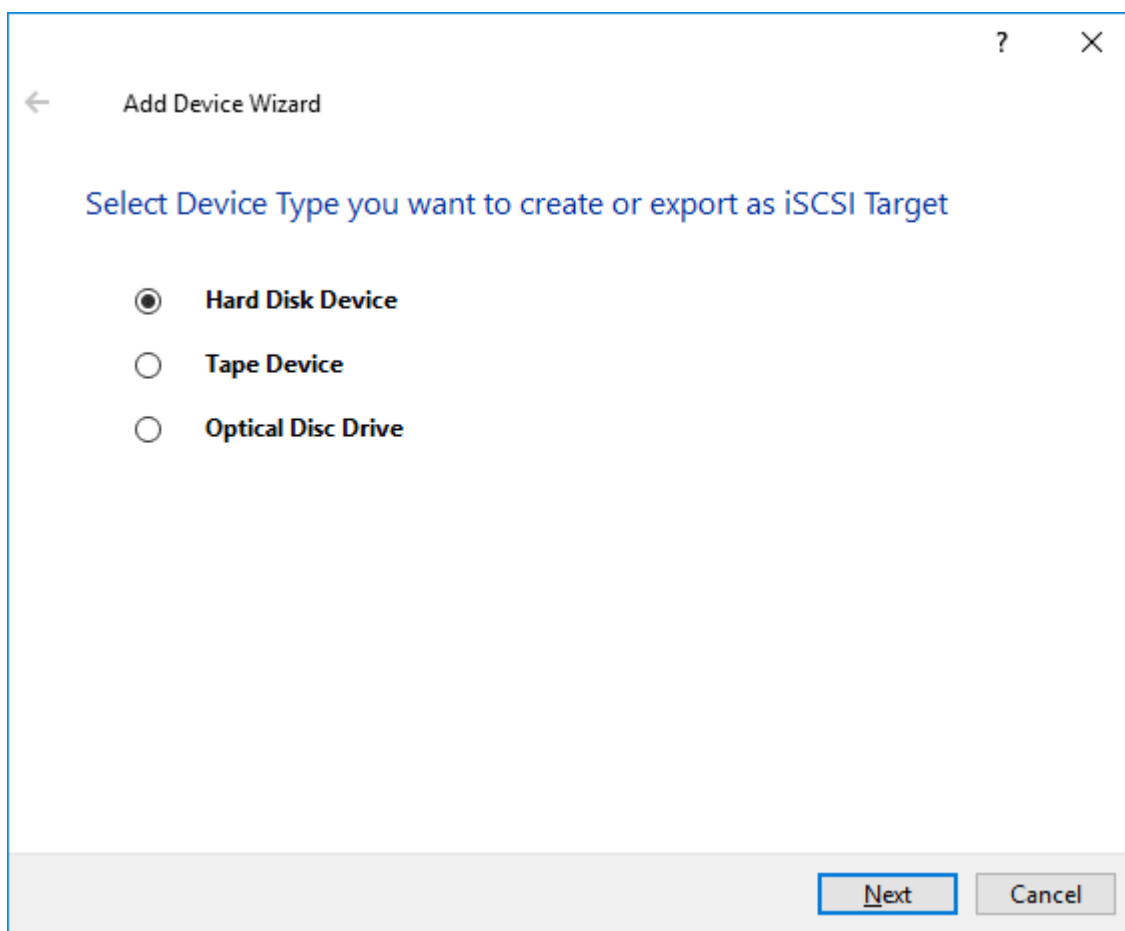
11. Verify the installation settings. Click on Back to make any changes or Install to proceed with installation.

12. Enable the appropriate checkbox to launch StarWind Management Console right after the setup wizard is closed and click on Finish.

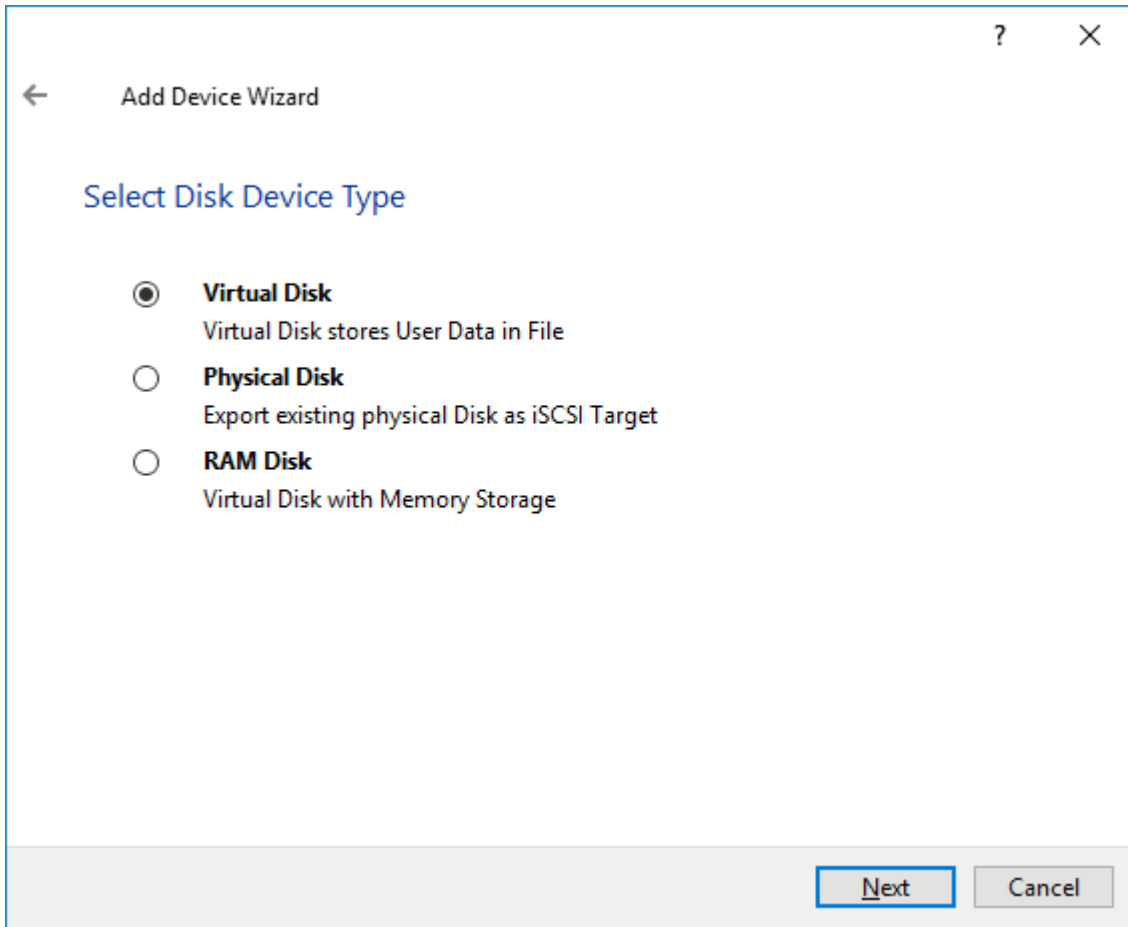
13. Repeat the installation steps on the partner node.

## Creating Starwind Devices

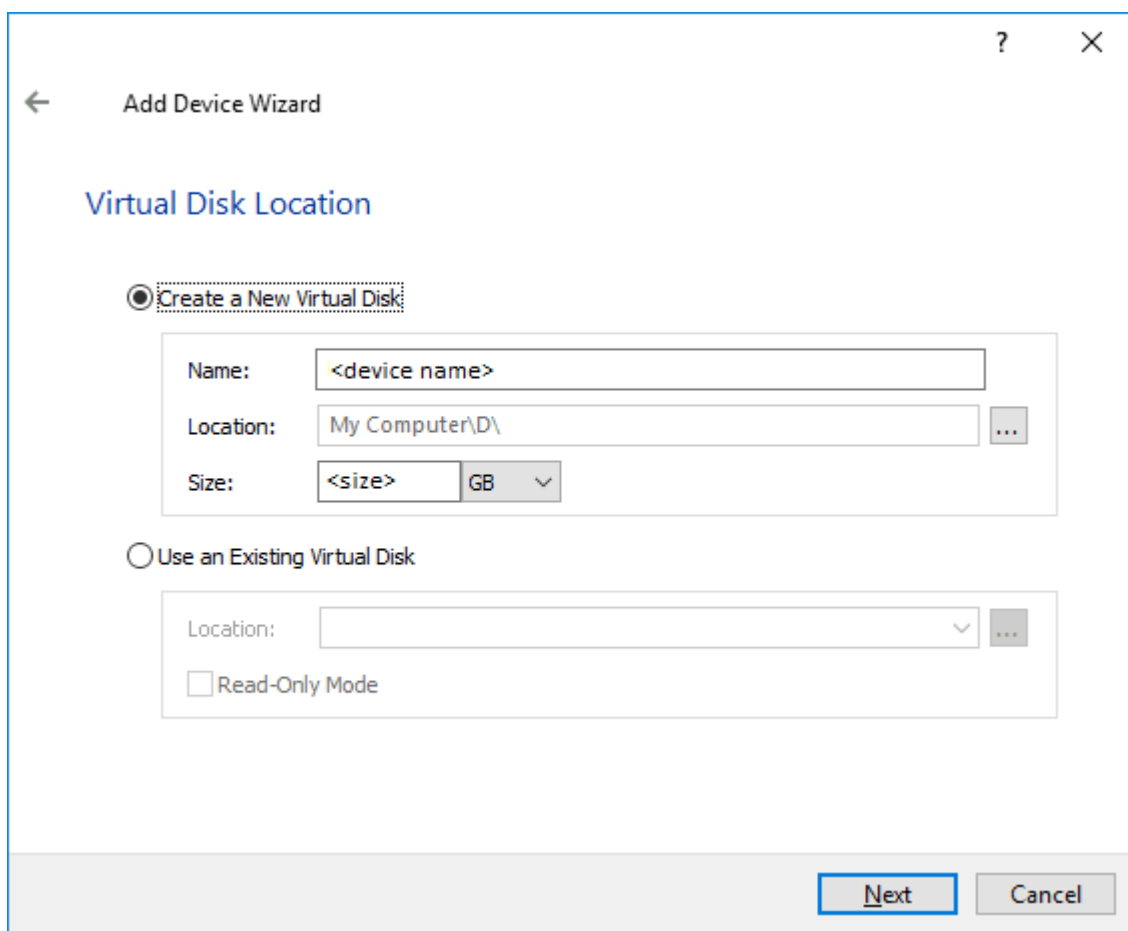
1. In the StarWind Management Console click to Add Device (advanced) button and open Add Device (advanced) Wizard.
2. Select Hard Disk Device as the type of device to be created.



3. Select Virtual Disk.



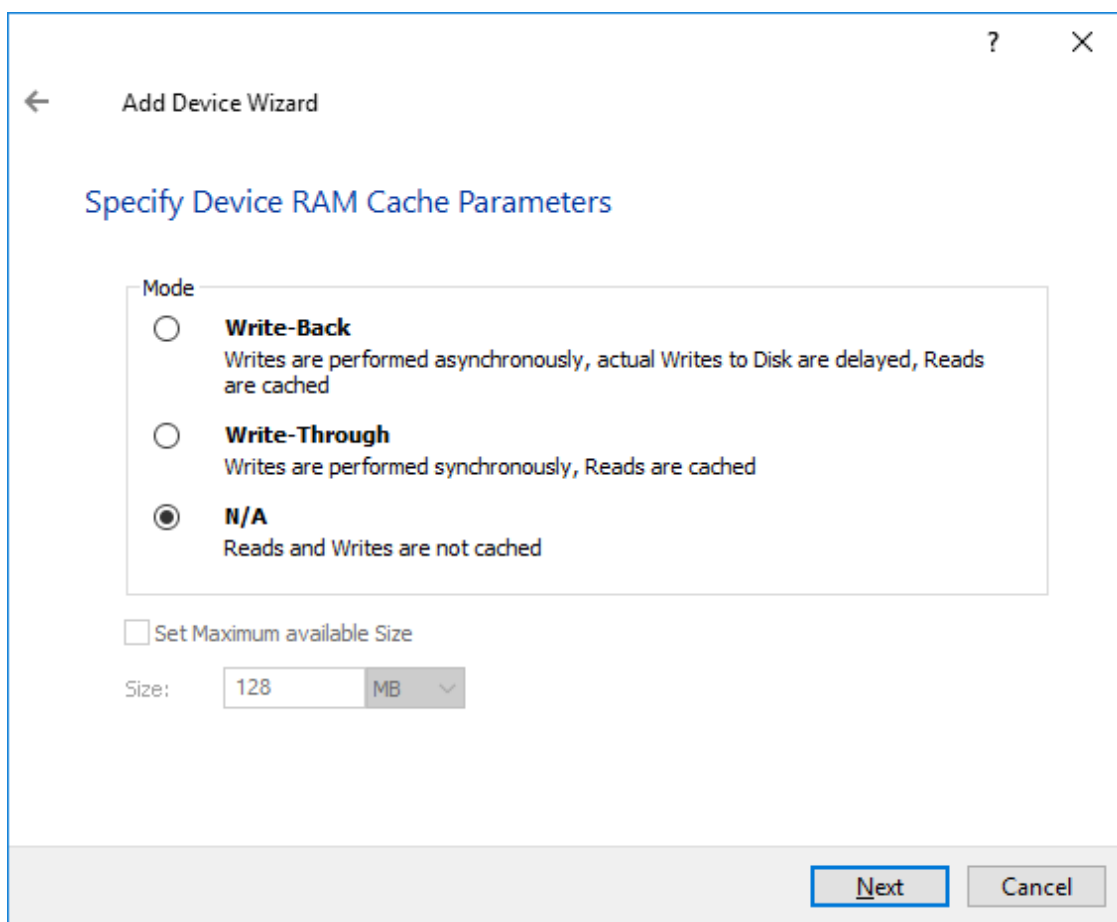
4. Specify a virtual disk Name, Location, and Size.



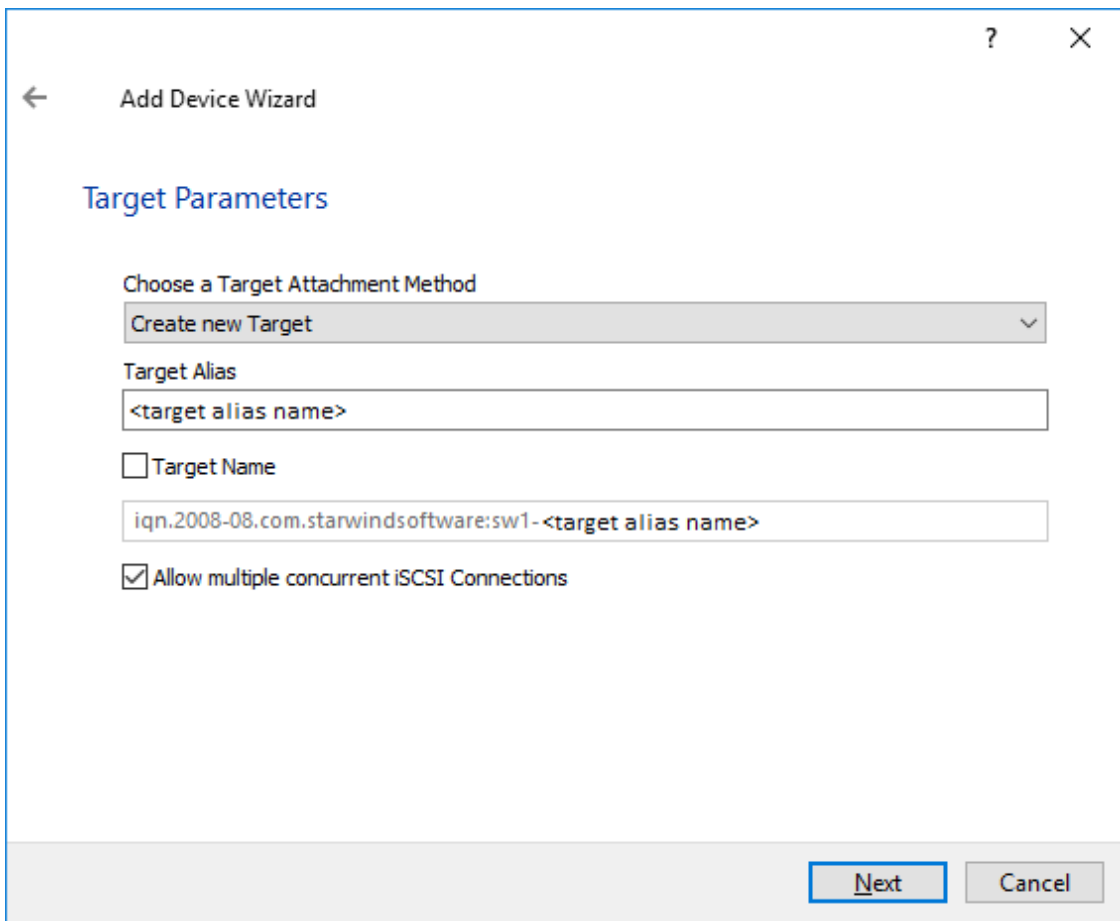
5. Select the Thick provisioned disk type and block size.

NOTE: Use 4096 sector size for targets, connected on Windows-based systems and 512 bytes sector size for targets, connected on Linux-based systems (ESXi/Xen/KVM).

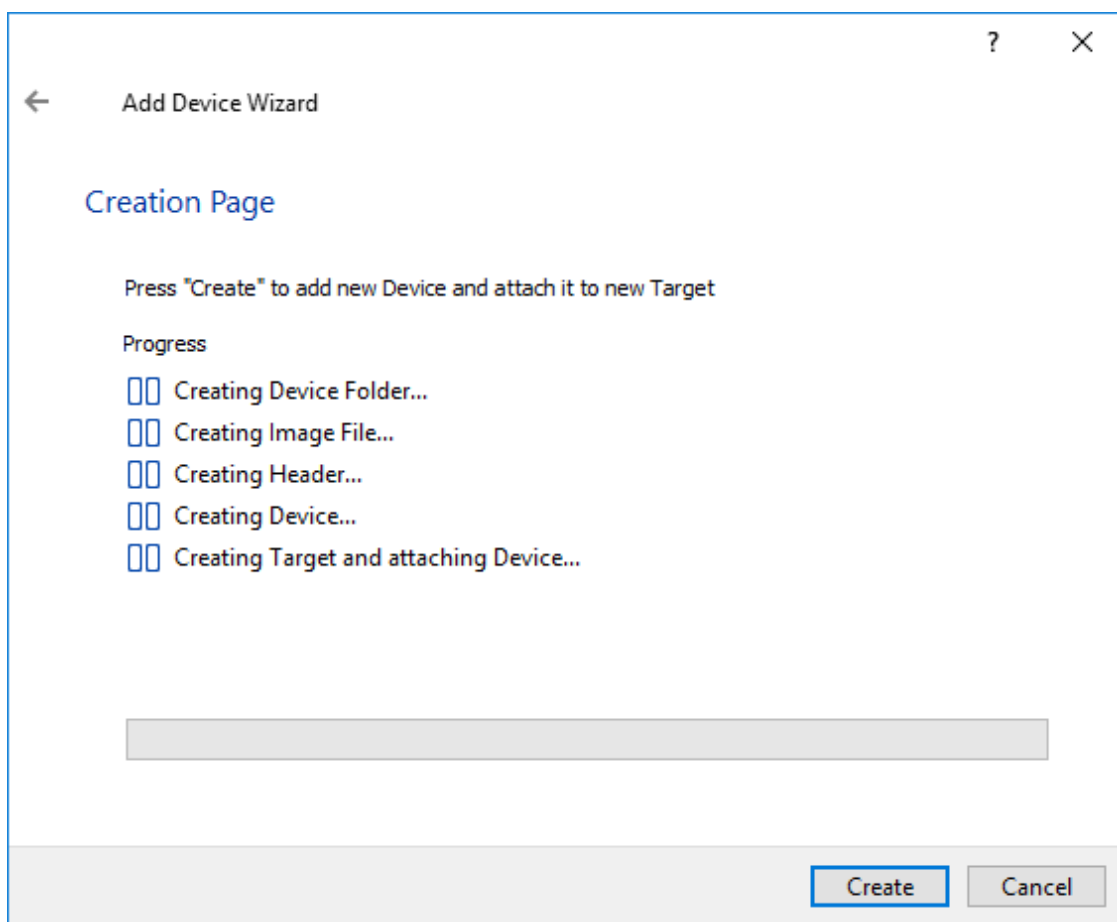
6. Define a caching policy and specify a cache size (in MB). Also, the maximum available cache size can be specified by selecting the appropriate checkbox. Optionally, define the L2 caching policy and cache size.



7. Specify Target Parameters. Select the Target Name checkbox to enter a custom target name. Otherwise, the name is generated automatically in accordance with the specified target alias.



8. Click Create to add a new device and attach it to the target.



9. Click Close to finish the device creation.

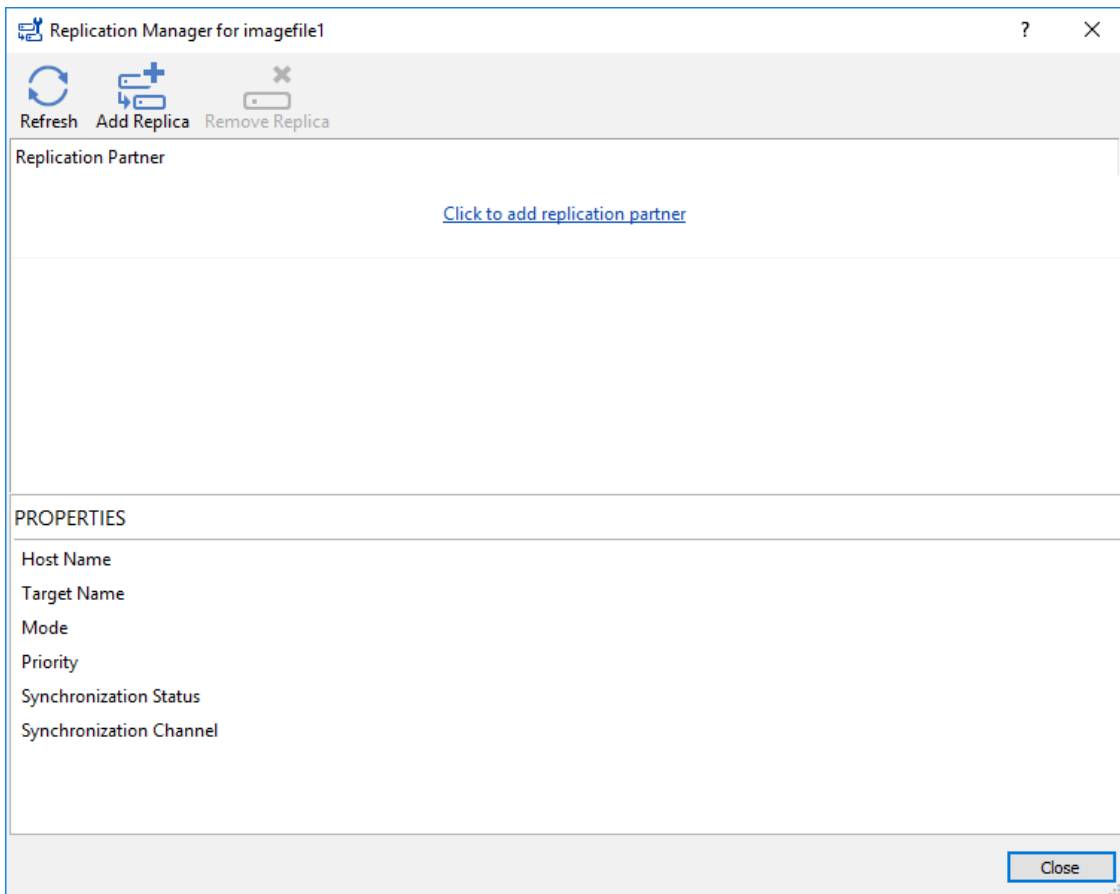
10. The successfully added devices appear in the StarWind Management Console.

## Select The Required Replication Mode

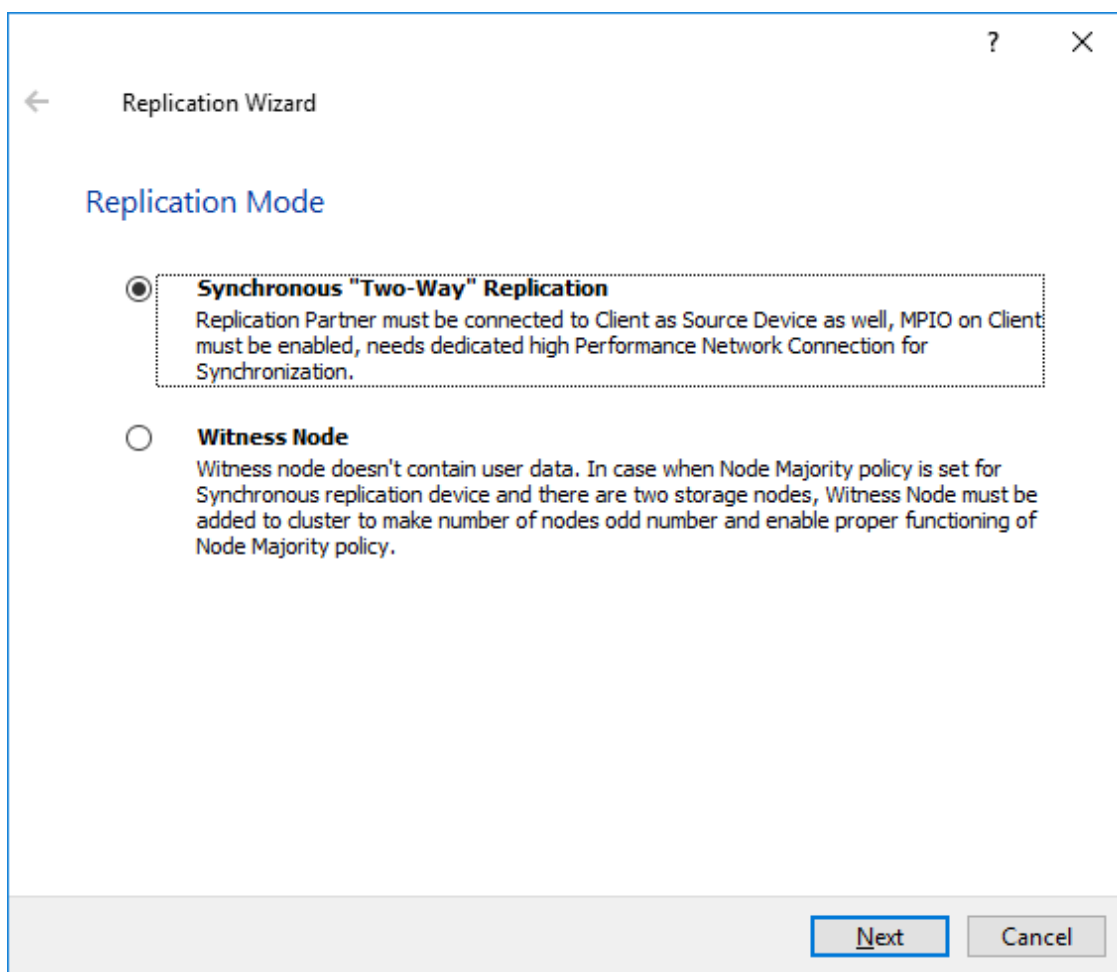
The replication can be configured using Synchronous “Two-Way” Replication mode: Synchronous or active-active replication ensures real-time synchronization and load balancing of data between two or three cluster nodes. Such a configuration tolerates the failure of two out of three storage nodes and enables the creation of an effective business continuity plan. With synchronous mirroring, each write operation requires control confirmation from both storage nodes. It guarantees the reliability of data transfers but is demanding in bandwidth since mirroring will not work on high-latency networks.

## Synchronous “Two-Way” Replication

1. Right-click the recently created device and select Replication Manager from the shortcut menu.
2. Select the Add Replica button in the top menu.



3. Select Synchronous “Two-Way” replication as a replication mode.



4. Specify a partner Host name or IP address and Port Number.

## Selecting The Failover Strategy

StarWind provides 2 options for configuring a failover strategy:

### Heartbeat

The Heartbeat failover strategy allows avoiding the “split-brain” scenario when the HA cluster nodes are unable to synchronize but continue to accept write commands from the initiators independently. It can occur when all synchronization and heartbeat channels disconnect simultaneously, and the partner nodes do not respond to the node’s requests. As a result, StarWind service assumes the partner nodes to be offline and continues operations on a single-node mode using data written to it.

If at least one heartbeat link is online, StarWind services can communicate with each other via this link. The device with the lowest priority will be marked as not synchronized and get subsequently blocked for the further read and write operations until the synchronization channel resumption. At the same time, the partner device on the

synchronized node flushes data from the cache to the disk to preserve data integrity in case the node goes down unexpectedly. It is recommended to assign more independent heartbeat channels during the replica creation to improve system stability and avoid the “split-brain” issue.

With the heartbeat failover strategy, the storage cluster will continue working with only one StarWind node available.

### Node Majority

The Node Majority failover strategy ensures the synchronization connection without any additional heartbeat links. The failure-handling process occurs when the node has detected the absence of the connection with the partner.

The main requirement for keeping the node operational is an active connection with more than half of the HA device’s nodes. Calculation of the available partners is based on their “votes”.

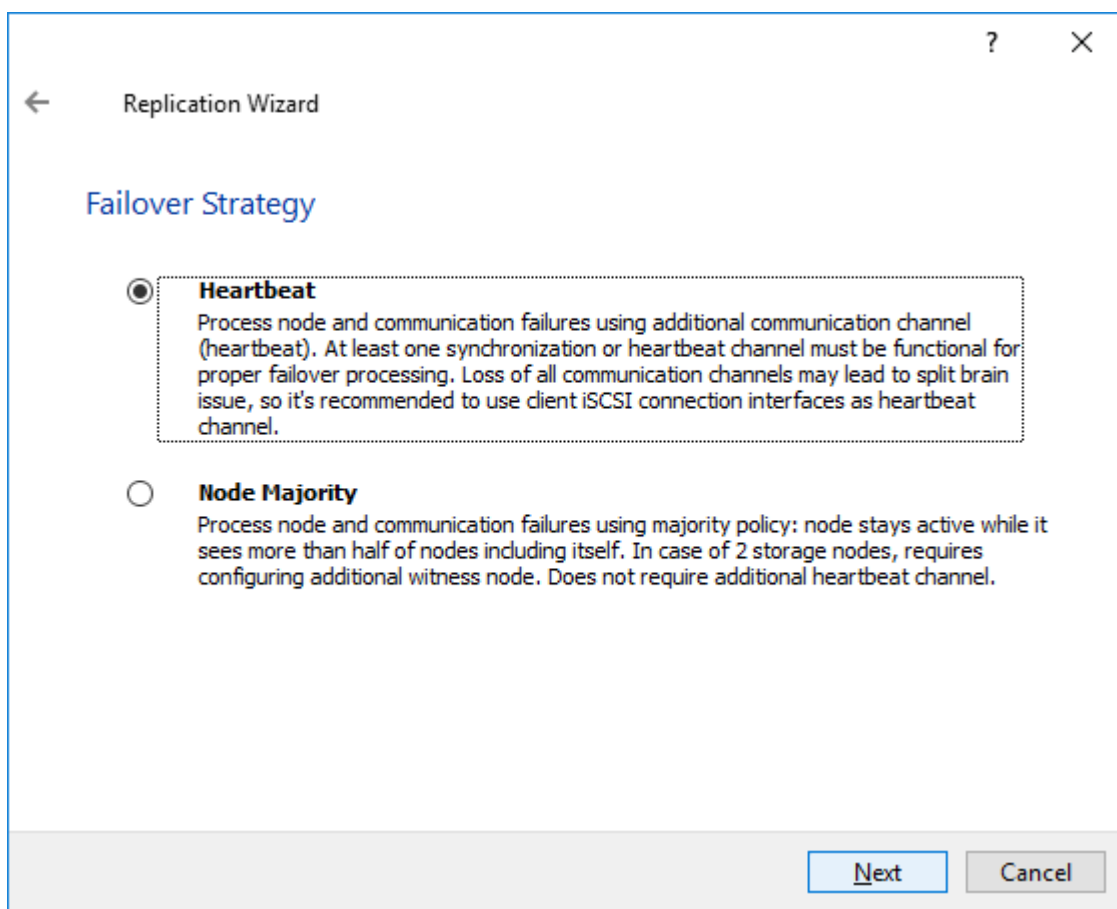
In case of a two-node HA storage, all nodes will be disconnected if there is a problem on the node itself, or in communication between them. Therefore, the Node Majority failover strategy requires the addition of the third Witness node or file share (SMB) which participates in the nodes count for the majority, but neither contains data on it nor is involved in processing clients’ requests. In case an HA device is replicated between 3 nodes, no Witness node is required.

With Node Majority failover strategy, failure of only one node can be tolerated. If two nodes fail, the third node will also become unavailable to clients’ requests.

Please select the required option:

## Heartbeat

1. Select Failover Strategy.



2. Select Create new Partner Device and click Next.

3. Select a partner device Location.

4. Select Synchronization Journal Strategy and click Next.

NOTE: There are several options - RAM-based journal (default) and Disk-based journal with failure and continuous strategy, that allow to avoid full synchronization cases.

RAM-based (default) synchronization journal is placed in RAM. Synchronization with RAM journal provides good I/O performance in any scenario. Full synchronization could occur in the cases described in this KB:

<https://knowledgebase.starwindsoftware.com/explanation/reasons-why-full-synchronization-may-start/>

Disk-based journal placed on a separate disk from StarWind devices. It allows to avoid full synchronization for the devices where it's configured even when StarWind service is being stopped on all nodes. Disk-based synchronization journal should be placed on a separate, preferably faster disk from StarWind devices. SSDs and NVMe disks are recommended as the device performance is defined by the disk speed, where the journal

is located. For example, it can be placed on the OS boot volume.

It is required to allocate 2 MB of disk space for the synchronization journal per 1 TB of HA device size with a disk-based journal configured with 2-way replication and 4MB per 1 TB of HA device size for 3-way replication.

#### Failure journal

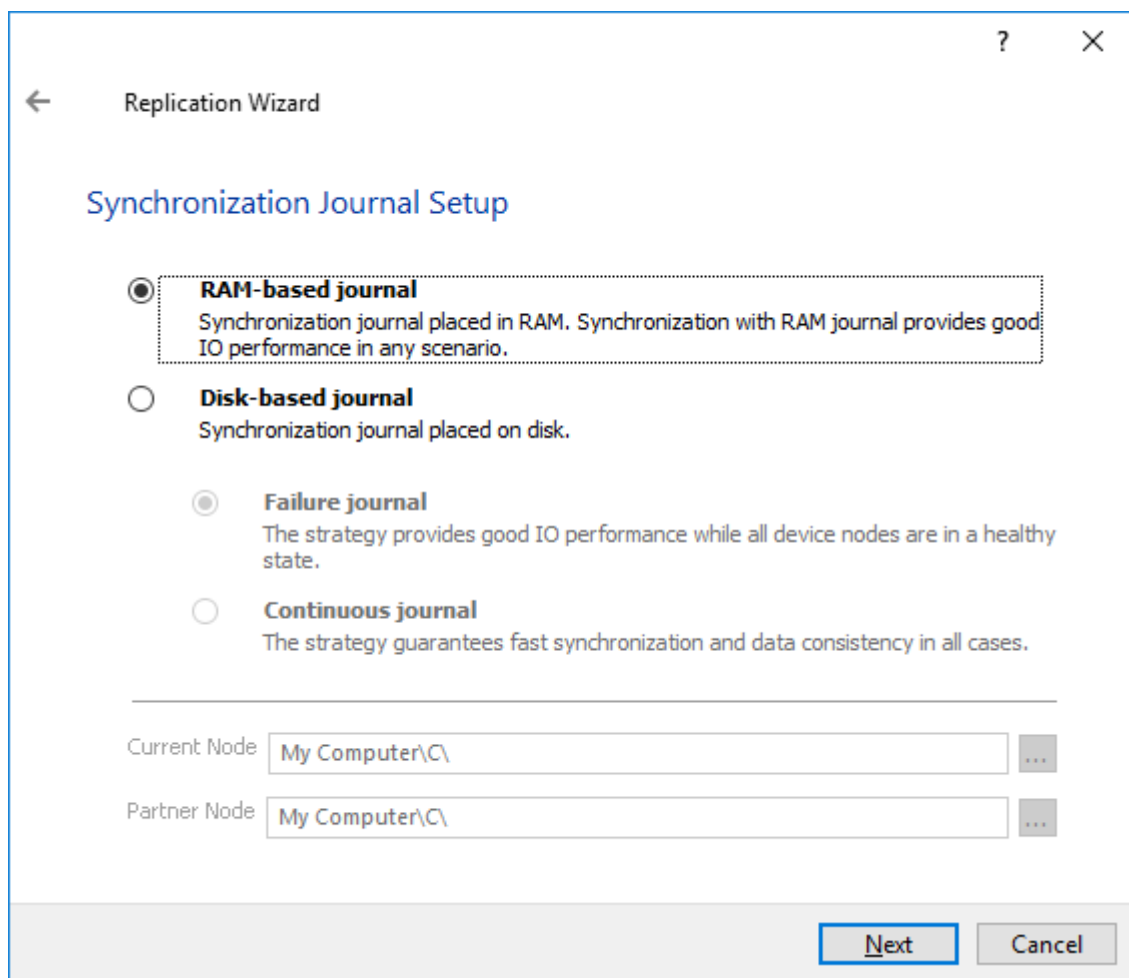
The strategy provides good I/O performance, as a RAM-based journal, while all device nodes are in a healthy synchronized state. If a device on one node went into a not synchronized state, the disk-based journal activates and a performance drop could occur as the device performance is defined by the disk speed, where the journal is located.

Fast synchronization is not guaranteed in all cases. For example, if a simultaneous hard reset of all nodes occurs, full synchronization will occur.

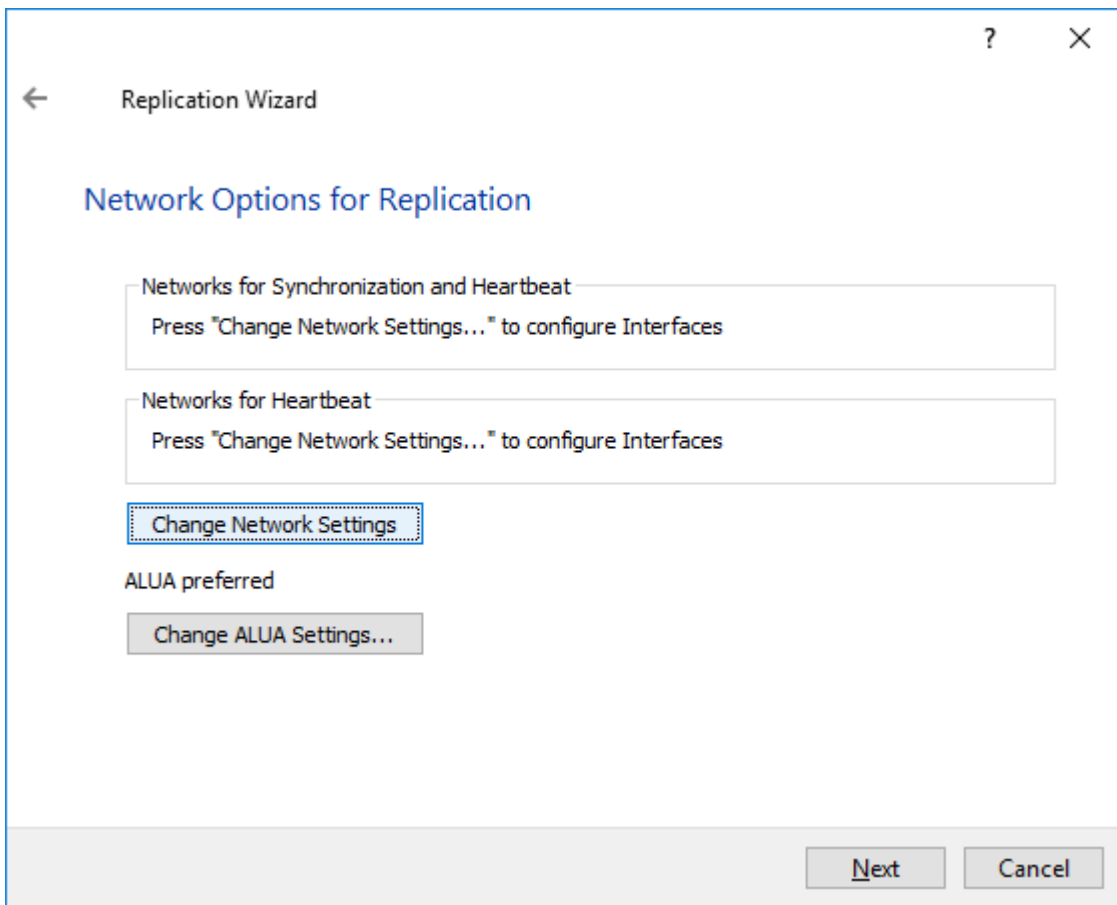
#### Continuous journal

The strategy guarantees fast synchronization and data consistency in all cases.

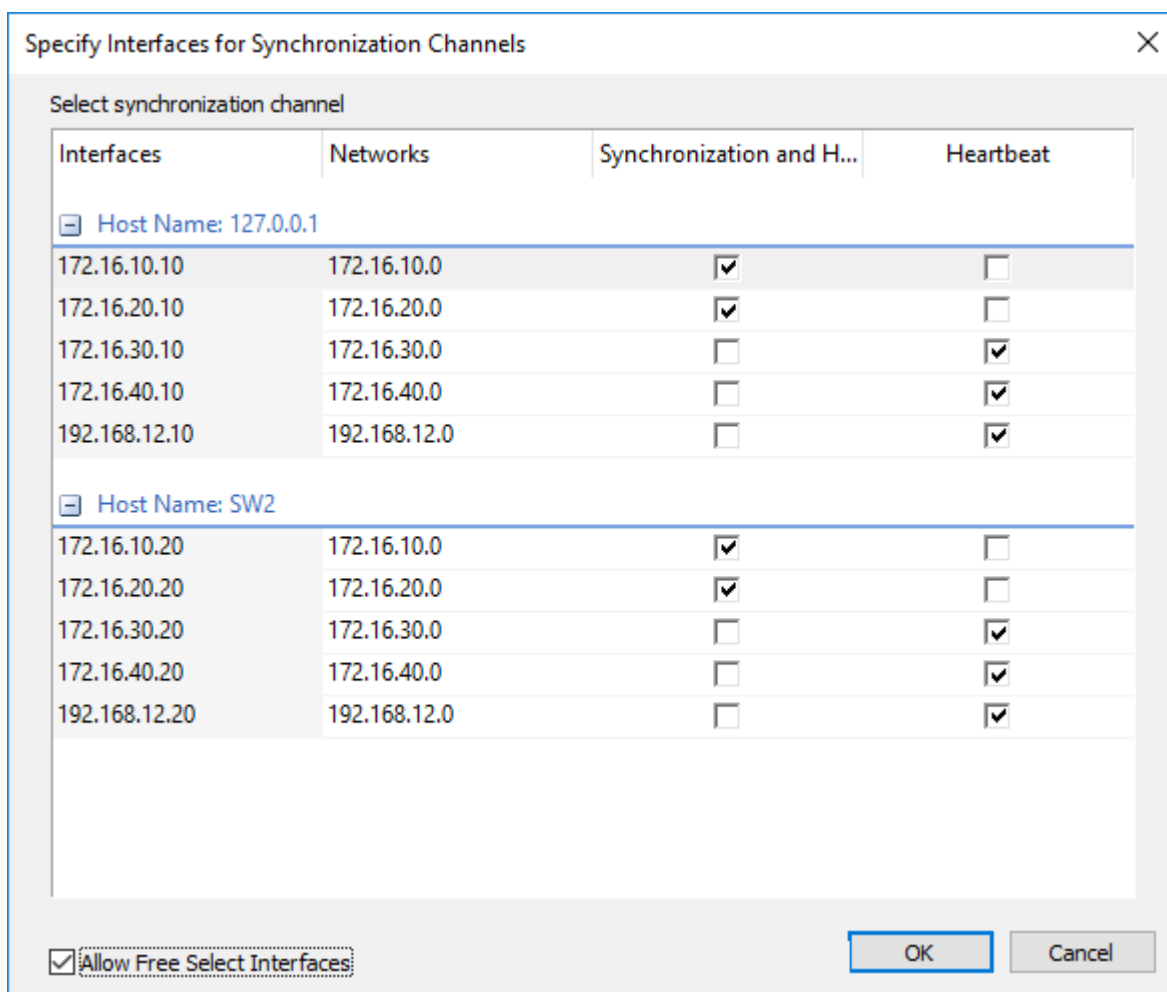
Although, this strategy has the worst I/O performance, because of frequent write operations to the journal, located on the disk, where the journal is located.



5. Click Change Network Settings.



6. Specify the interfaces for Synchronization and Heartbeat Channels. Click OK and then click Next.



7. In Select Partner Device Initialization Mode, select Synchronize from existing Device and click Next.

8. Click Create Replica. Click Finish to close the wizard. The successfully added device appears in StarWind Management Console.

9. Follow the similar procedure for the creation of other virtual disks that will be used as storage repositories.

## Node Majority

There are two ways to configure Witness for 2-nodes StarWind HA device, created with Node Majority Failover Strategy: File Share (SMB) as Witness and additional server as Witness Node.

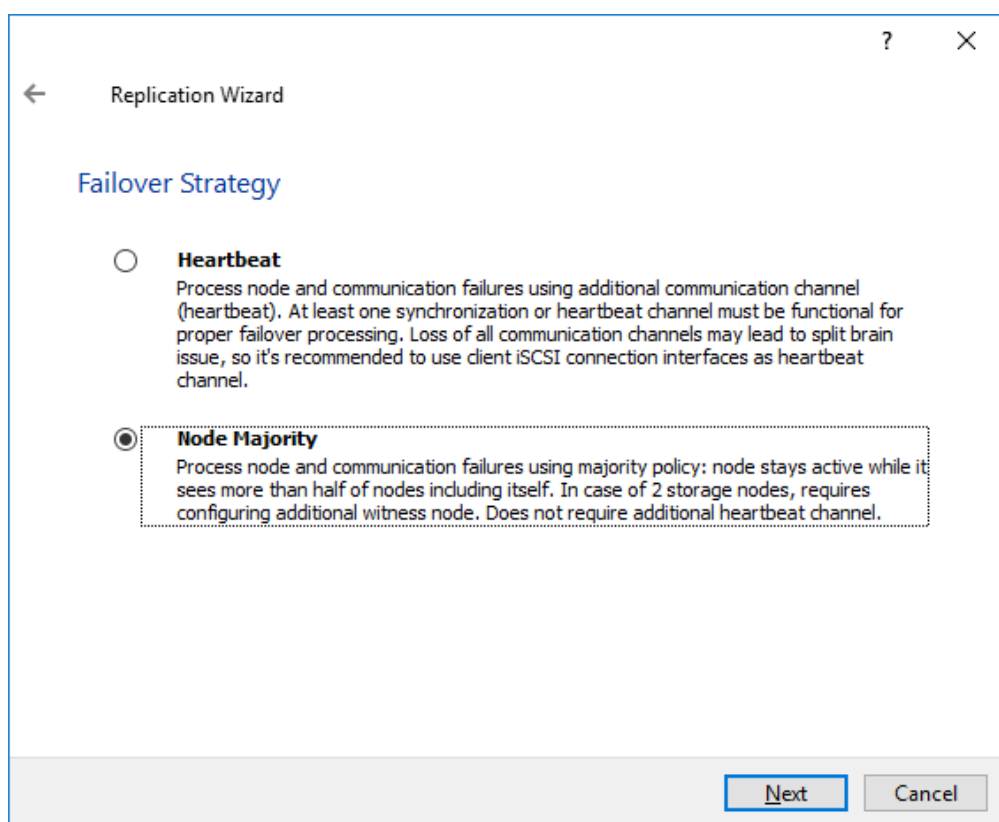
- Creating HA device with File SHare(SMB) as Witness:

SMB Witness is a file, located on SMB share, which can be accessed by both nodes and help them to eliminate the split-brain issue in case of synchronization connection interruption between the nodes. To set up the SMB file share as a Witness for 2-nodes HA device with Node Majority Failover Strategy, perform the actions, described on this page:

<https://www.starwindsoftware.com/help/ConfiguringFileShareSMBasWitness.html>

- Creating HA device with Witness Node:

1. Select the Node Majority failover strategy and click Next.



2. Choose Create new Partner Device and click Next.

3. Specify the partner device Location and modify the target name if necessary. Click Next. Select Synchronization Journal strategy and location and click Next.

4. In Network Options for Replication, press the Change network settings button and select the synchronization channel for the HA device.

5. In Specify Interfaces for Synchronization Channels, select the checkboxes with the

appropriate networks and click OK. Then click Next.

6. Select Synchronize from existing Device as the partner device initialization mode.

7. Press the Create Replica button and close the wizard.

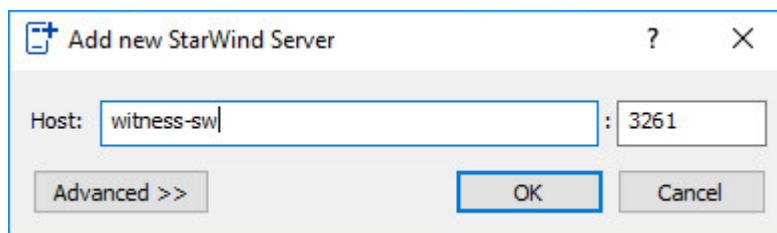
8. The added devices will appear in StarWind Management Console. Repeat the steps above to create other virtual disks if necessary.

## Adding Witness Node

Witness node can be configured on a separate host or as a virtual machine in a cloud. It requires StarWind Virtual SAN service installed on it.

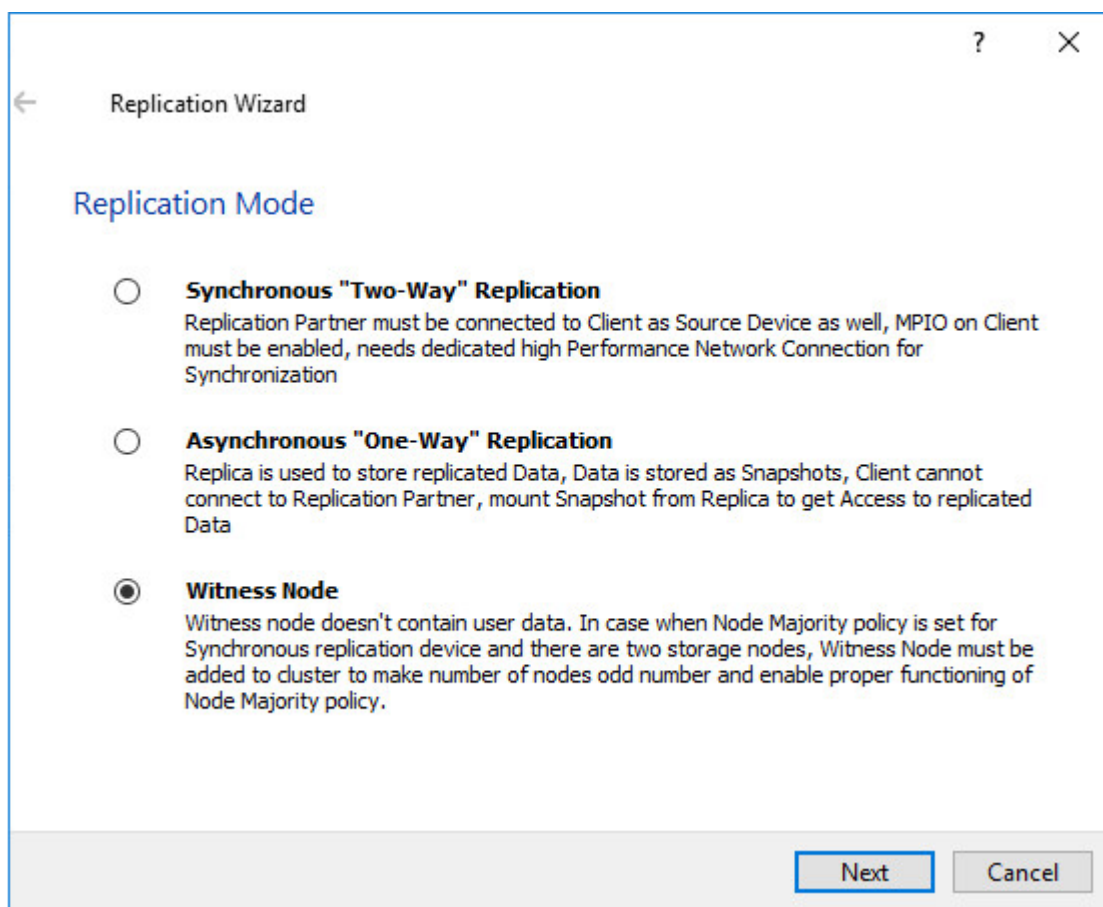
NOTE: Since the device created in this guide is replicated between 2 active nodes with the Node Majority failover strategy, a Witness node must be added to it.

1. Open StarWind Management Console, right-click on the Servers field and press the Add Server button. Add a new StarWind Server which will be used as the Witness node and click OK.

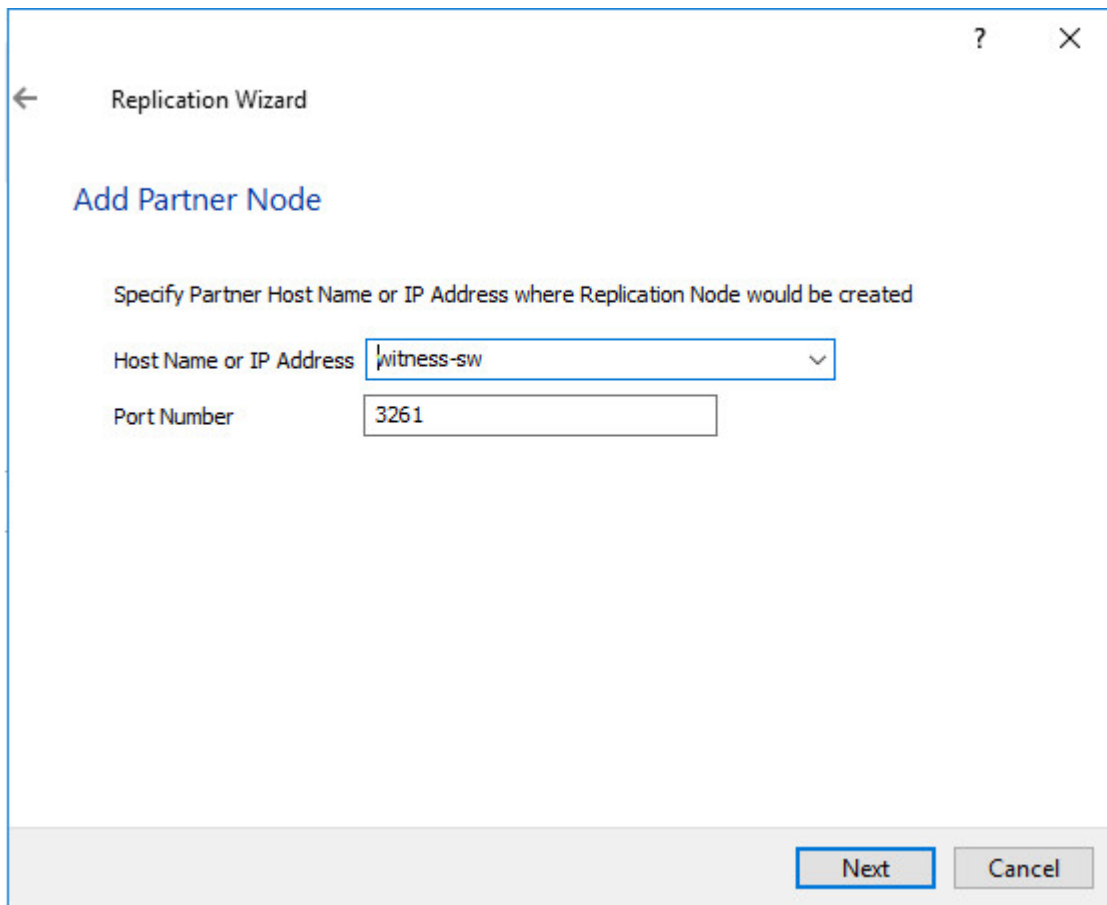


2. Right-click on the HA device with the configured Node Majority failover policy and select Replication Manager and press the Add Replica button.

3. Select Witness Node.



4. Specify the Witness node Host Name or IP address. The default Port Number is 3261.



5. In Partner Device Setup, specify the Witness device Location. Optionally, modify the target name by clicking the appropriate button.

6. In Network Options for Replication, select the synchronization channel with the Witness node by clicking the Change Network Settings button.

7. Specify the interface for Synchronization and Heartbeat and click OK.

8. Click Create Replica and then close the wizard.

9. Repeat the steps above to create other virtual disks if necessary.

NOTE: To extend an Image File or a StarWind HA device to the required size, please check the article below:

<https://knowledgebase.starwindsoftware.com/maintenance/how-to-extend-image-file-or-high-availability-device/>

## Configuring Hosts With Xenserver 7.x

1. Launch XenCenter.
2. Click New Pool.
3. Specify the name and description of the pool and click Add New Server.
4. In the Add New Server window, specify the first XenServer host to be added to the pool as well as User name and Password.

**Add New Server**

Enter the host name or IP address of the server you want to add and your user login credentials for that server.

Server: 192.168.12.11

User login credentials

Username: root

Password: ●●●●●●●●

Add Cancel

5. To add the second XenServer host to the pool, repeat the previous steps.

**Create New Pool**

To create your pool provide a name and select which servers you would like to be added to the pool.

Name: SWXCenter

Description: (optional)

Servers

Master:

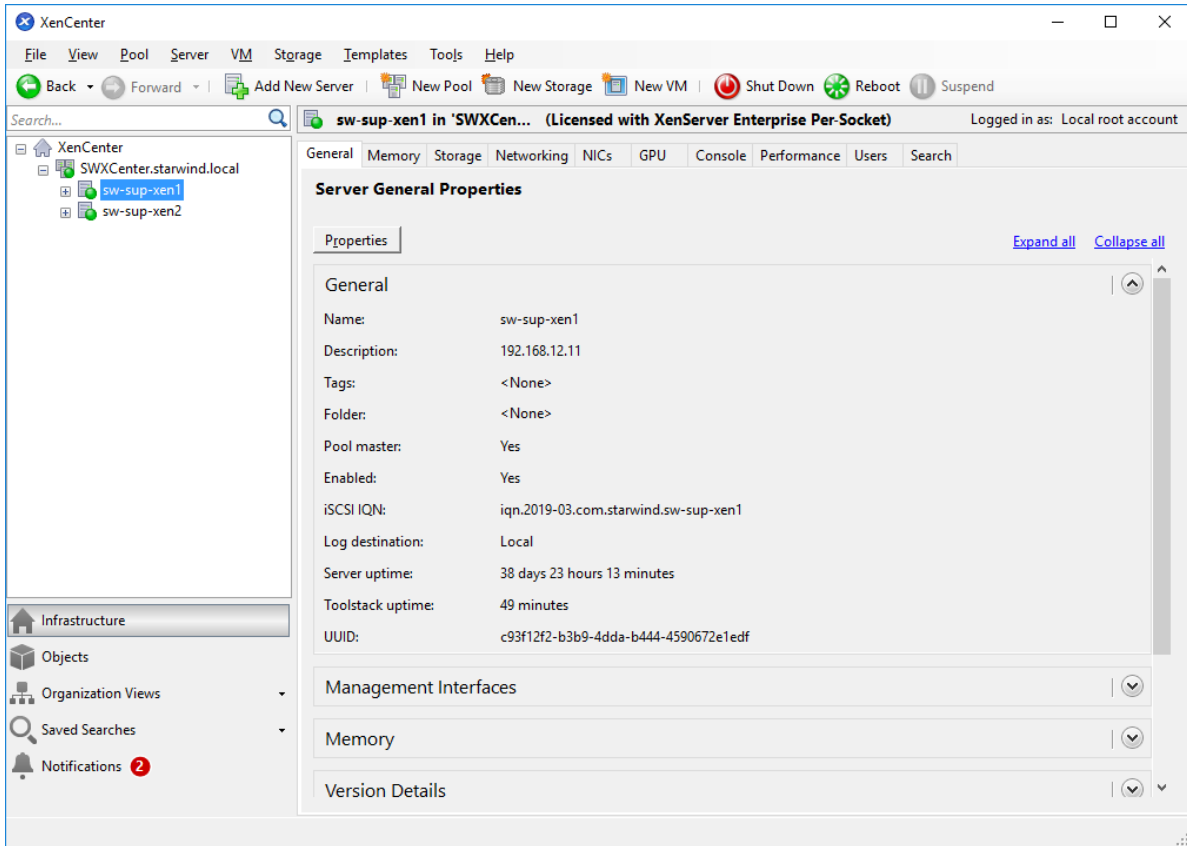
Additional members:

sw-sup-xen2

+ Add New Server

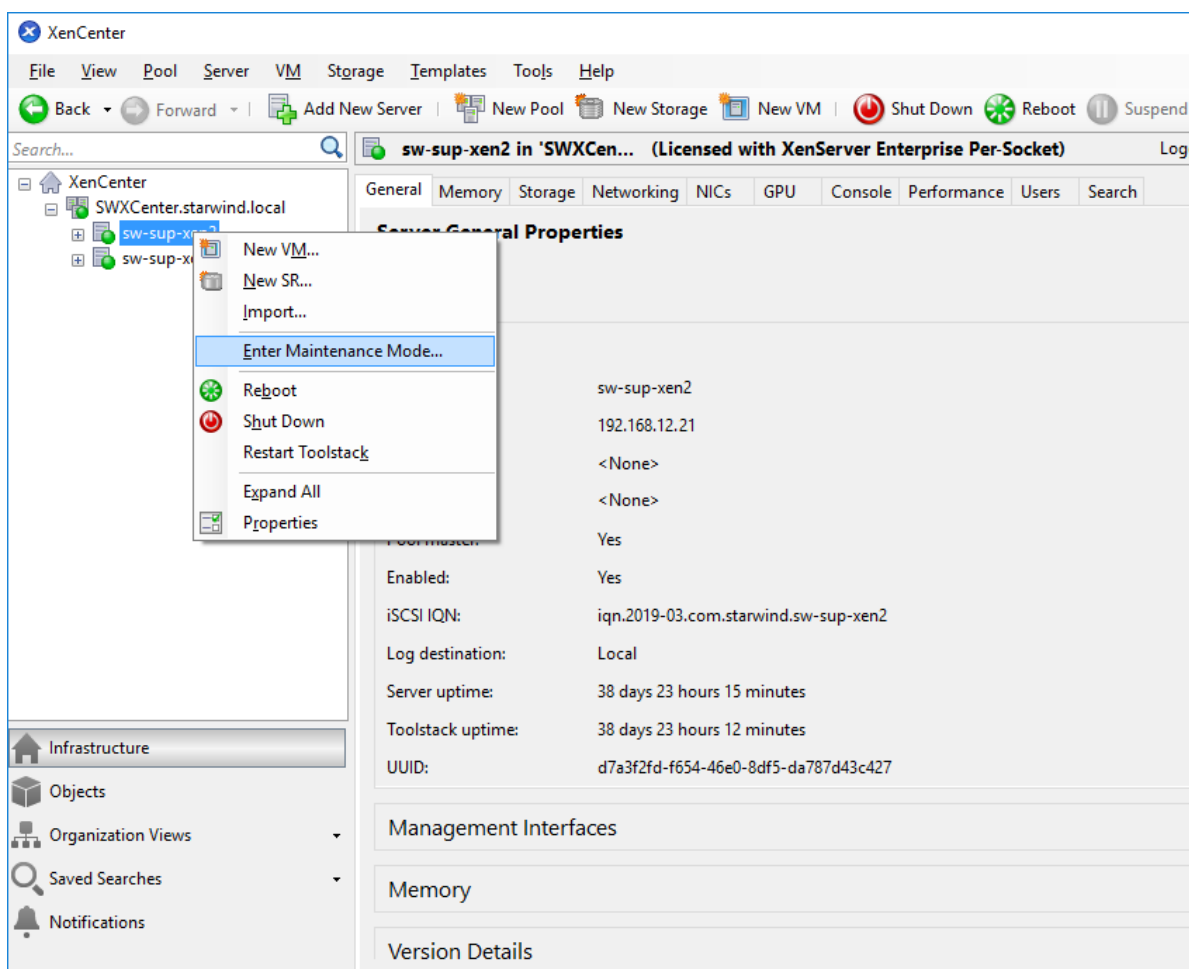
Create Pool Cancel

6. Specify the Master host.
7. Click Create Pool.
8. After creating the pool, the XenCenter window should look as shown in the screenshot below.

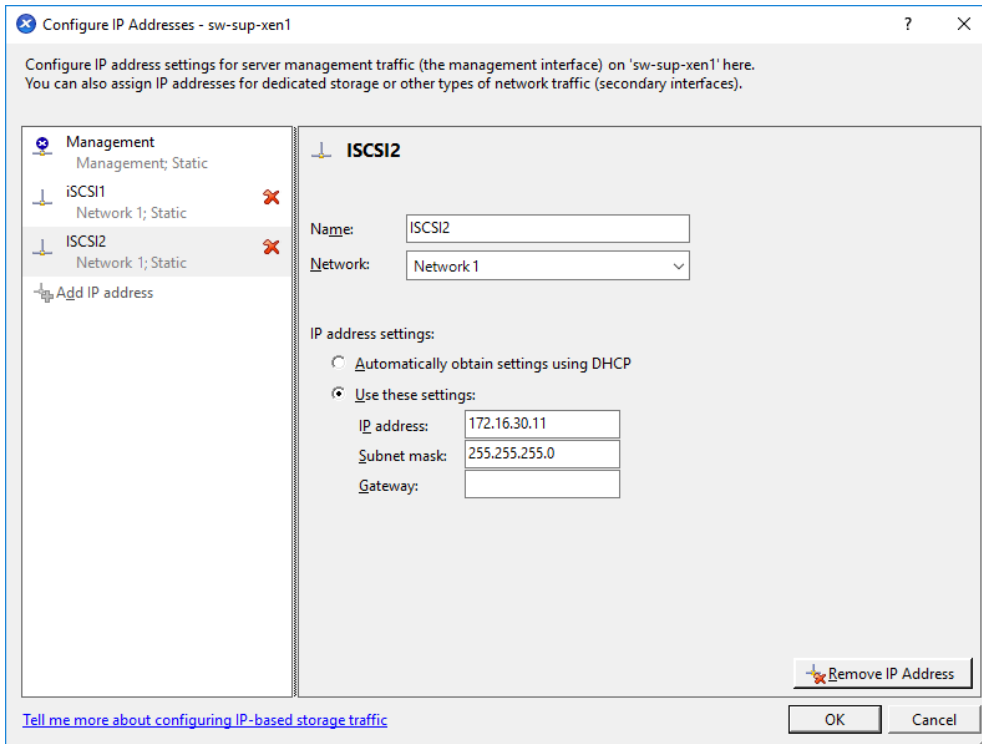


## Configuring Network Settings

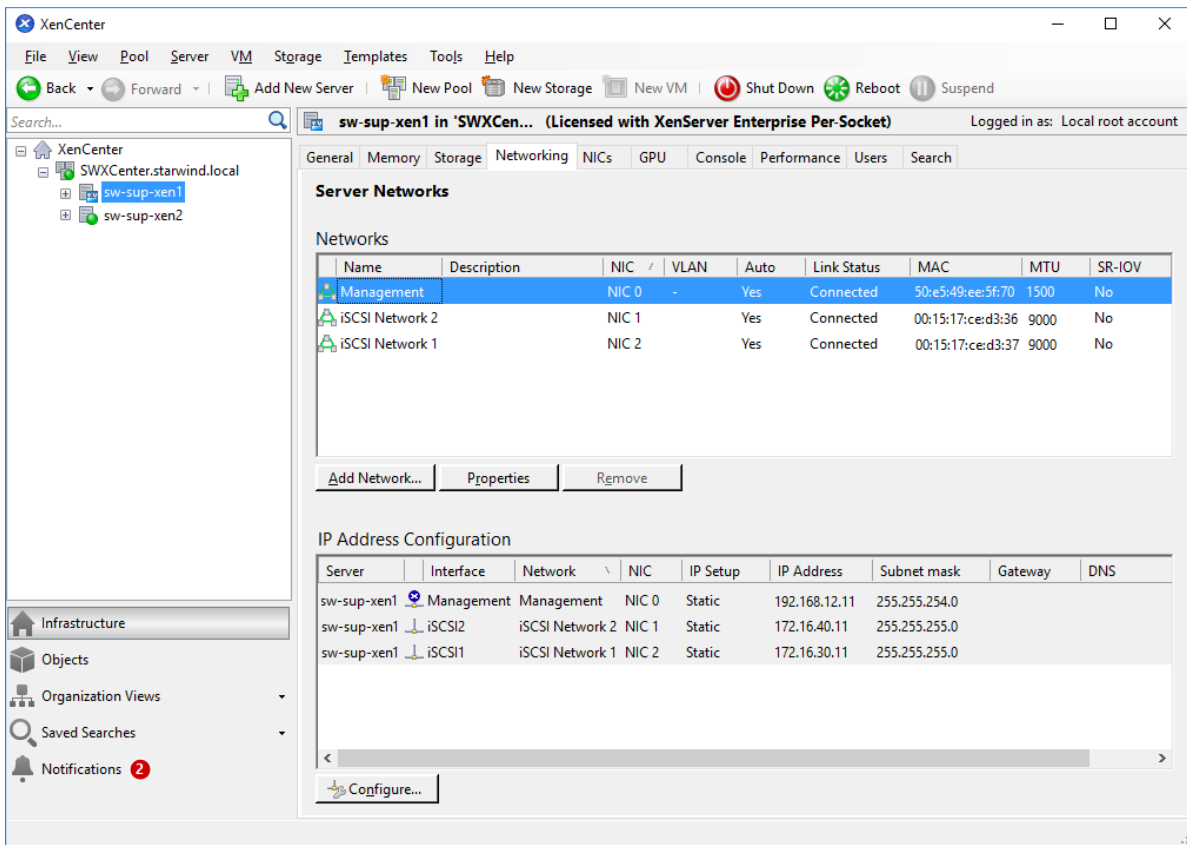
NOTE: To switch the XenServer host to Maintenance Mode for network configuration, right-click the XenServer and select Enter Maintenance Mode... from the shortcut menu.



1. Select the first XenServer host, switch to the Networking tab, and click Configure.
2. In the appeared window, click Add IP address to add networks.
3. Configure the required IP address and click OK.



4. The window should look as shown below.



5. Exit the Maintenance mode.

6. Repeat the same steps on all XenServer hosts.

### Configuring iSCSI Initiator

NOTE: The following actions should be performed on each XenServer host in the pool.

1. Switch XenServer host to the Maintenance mode for iSCSI configuration.
2. Edit `/etc/iscsi/initiatorname.iscsi` and set the appropriate iqn for XenServer iSCSI initiator.
3. Edit the `/etc/iscsi/iscsid.conf` file.

Set the following values:

```
node.startup = automatic
node.session.iscsi.FirstBurstLength = 262144
node.session.iscsi.MaxBurstLength = 262144
```

4. Restart the software iSCSI service:

```
service iscsi restart
service iscsid restart
```

5. Set the iSCSI services to start automatically when launching XenServer:

```
chkconfig iscsi on
chkconfig iscsid on
```

### Applying Multipathing

NOTE: The following actions should be performed on each XenServer host in the pool.

1. Switch XenServer host to maintenance mode for multipath configuration
2. Switch to console tab, edit the multipath configuration file by running `vi /etc/multipath.conf` command.
3. Insert the following block into the "devices" section:

```
device
{
vendor "STARWIND"
product "STARWIND*"
path_grouping_policy multibus
path_checker "tur"
failback immediate
```

```
path_selector "round-robin 0"

rr_min_io 3

rr_weight uniform

hardware_handler "1 alua"

}
```

4. Restart the multipath service:

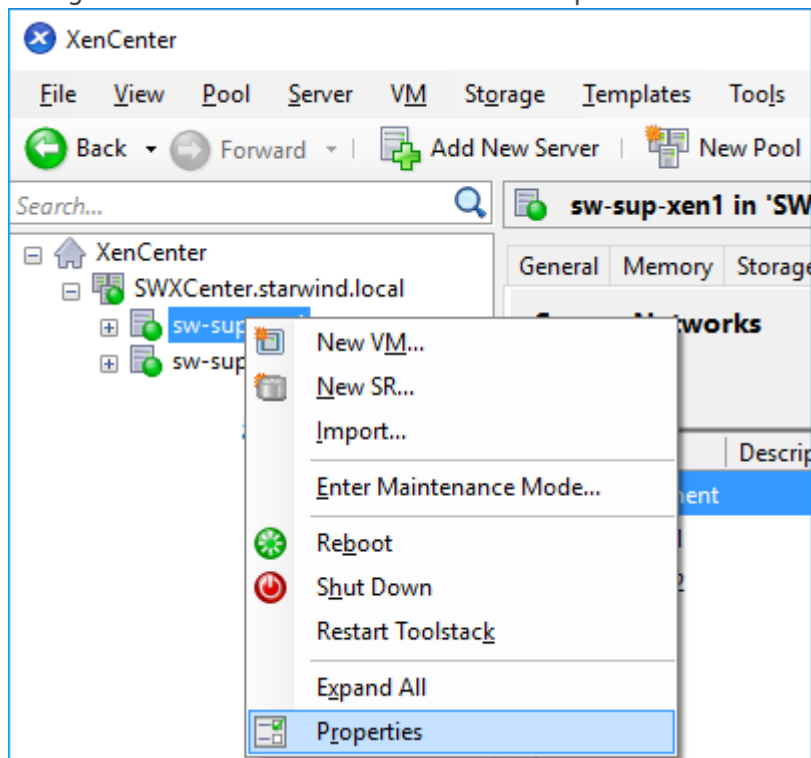
```
service multipathd restart

service multipathd reload
```

5. Set the multipath service to start automatically when launching XenServer:

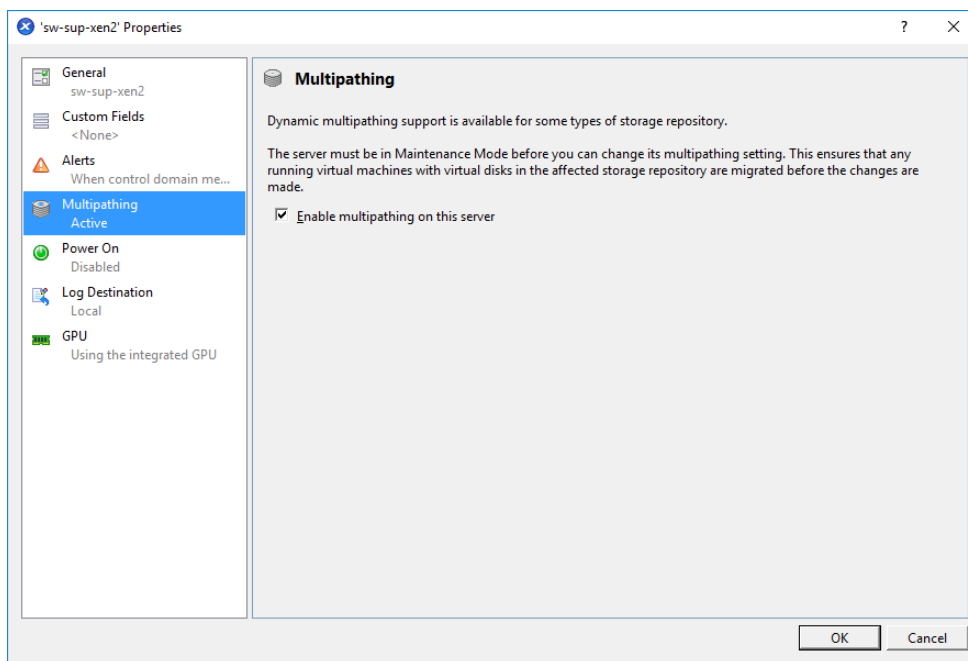
```
chkconfig multipathd on
```

6. Right-click the XenServer and select Properties from the shortcut menu.



7. Click Multipathing Active in the left pane. Select the Enable multipathing on this

server checkbox and click OK.



8. Turn off the Maintenance mode: right-click the XenServer and select Exit Maintenance Mode from the shortcut menu.
9. Reboot the XenServer host.

## Adding Shared Storage manually

1. Select the XenServer host. Switch to the Console tab in XenCenter.
2. Run discovery:

```
iscsiadm -m discovery -t st -p 172.16.30.10
iscsiadm -m discovery -t st -p 172.16.40.10
iscsiadm -m discovery -t st -p 172.16.30.20
iscsiadm -m discovery -t st -p 172.16.40.20
```

3. Connect the targets using their IQNs found by discovery:

```
iscsiadm -m node -T iqn.2008-08.com.starwindsoftware:sw1-ds1 -p 172.16.30.10 -l
iscsiadm -m node -T iqn.2008-08.com.starwindsoftware:sw1-ds1 -p 172.16.40.10 -l
iscsiadm -m node -T iqn.2008-08.com.starwindsoftware:sw2-ds1 -p 172.16.30.20 -l
```

```
iscsiadm -m node -T iqn.2008-08.com.starwindsoftware:sw2-ds1 -p
172.16.40.20 -l
```







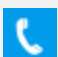
4. Perform the steps 1-3 for all XenServer hosts in the Pool.
5. On Pool Master, run the following commands to add SR:

```
xe sr-probe type=lvmoiscsi device-
config:target=172.16.30.10,172.16.40.10,172.16.30.20,172.16.40.
20 device-config:targetIQN=*
```

```
xe sr-create type=lvmoiscsi \
shared=true \
name-label="sw-sr" \
device-
config:target=172.16.30.10,172.16.40.10,172.16.30.20,172.16.40.
20 \
device-config:targetIQN=* \
device-
config:multiSession="172.16.30.10,3260,iqn.2008-08.com.starwind
software:sw1-
ds1|172.16.40.10,3260,iqn.2008-08.com.starwindsoftware:sw1-
ds1|172.16.30.20,3260,iqn.2008-08.com.starwindsoftware:sw2-
ds1|172.16.40.20,3260,iqn.2008-08.com.starwindsoftware:sw2-
ds1|" \
device-
config:multihomelist=172.16.30.10:3260,172.16.40.10:3260,172.16
.30.20:3260,172.16.40.20:3260 \
device-config:port=3260 \
device-config:SCSIid=20cfc3b5a7c6bcef2
```

6. In the Console tab, check if the multipath works properly on both hosts.

## Contacts

US Headquarters	EMEA and APAC
 +1 617 829 44 95	 +44 2037 691 857 (United Kingdom)
 +1 617 507 58 45	 +49 800 100 68 26 (Germany)
 +1 866 790 26 46	 +34 629 03 07 17 (Spain and Portugal)
	 +33 788 60 30 06 (France)

Customer Support Portal: <https://www.starwind.com/support>

Support Forum: <https://www.starwind.com/forums>

Sales: [sales@starwind.com](mailto:sales@starwind.com)

General Information: [info@starwind.com](mailto:info@starwind.com)



StarWind Software, Inc. 100 Cummings Center Suite 224-C Beverly MA 01915, USA  
[www.starwind.com](http://www.starwind.com) ©2026, StarWind Software Inc. All rights reserved.