

StarWind Tape Redirector: Installation Guide

2024

TECHNICAL PAPERS



Trademarks

“StarWind”, “StarWind Software” and the StarWind and the StarWind Software logos are registered trademarks of StarWind Software. “StarWind LSFS” is a trademark of StarWind Software which may be registered in some jurisdictions. All other trademarks are owned by their respective owners.

Changes

The material in this document is for information only and is subject to change without notice. While reasonable efforts have been made in the preparation of this document to assure its accuracy, StarWind Software assumes no liability resulting from errors or omissions in this document, or from the use of the information contained herein. StarWind Software reserves the right to make changes in the product design without reservation and without notification to its users.

Technical Support and Services

If you have questions about installing or using this software, check this and other documents first - you will find answers to most of your questions on the [Technical Papers](#) webpage or in [StarWind Forum](#). If you need further assistance, please [contact us](#) .

About StarWind

StarWind is a pioneer in virtualization and a company that participated in the development of this technology from its earliest days. Now the company is among the leading vendors of software and hardware hyper-converged solutions. The company's core product is the years-proven StarWind Virtual SAN, which allows SMB and ROBO to benefit from cost-efficient hyperconverged IT infrastructure. Having earned a reputation of reliability, StarWind created a hardware product line and is actively tapping into hyperconverged and storage appliances market. In 2016, Gartner named StarWind “Cool Vendor for Compute Platforms” following the success and popularity of StarWind HyperConverged Appliance. StarWind partners with world-known companies: Microsoft, VMware, Veeam, Intel, Dell, Mellanox, Citrix, Western Digital, etc.

Copyright ©2009-2018 StarWind Software Inc.

No part of this publication may be reproduced, stored in a retrieval system, or transmitted in any form or by any means, electronic, mechanical, photocopying, recording or otherwise, without the prior written consent of StarWind Software.

Annotation.

Relevant Products

StarWind Tape Redirector

Purpose

The guide provides detailed instructions for installing and configuring the StarWind Tape Redirector, a tool that allows to share a tape library as iSCSI target within the network. Once the iSCSI target is connected on the destination server, the tape library becomes available there as a connected locally. The guide includes steps for adding physical tape device in StarWind Management Console and connecting to the device using iSCSI Initiator.

Audience

The primary audience for this guide includes IT professionals, system administrators, and network engineers who manage virtualized environments and backup solutions.

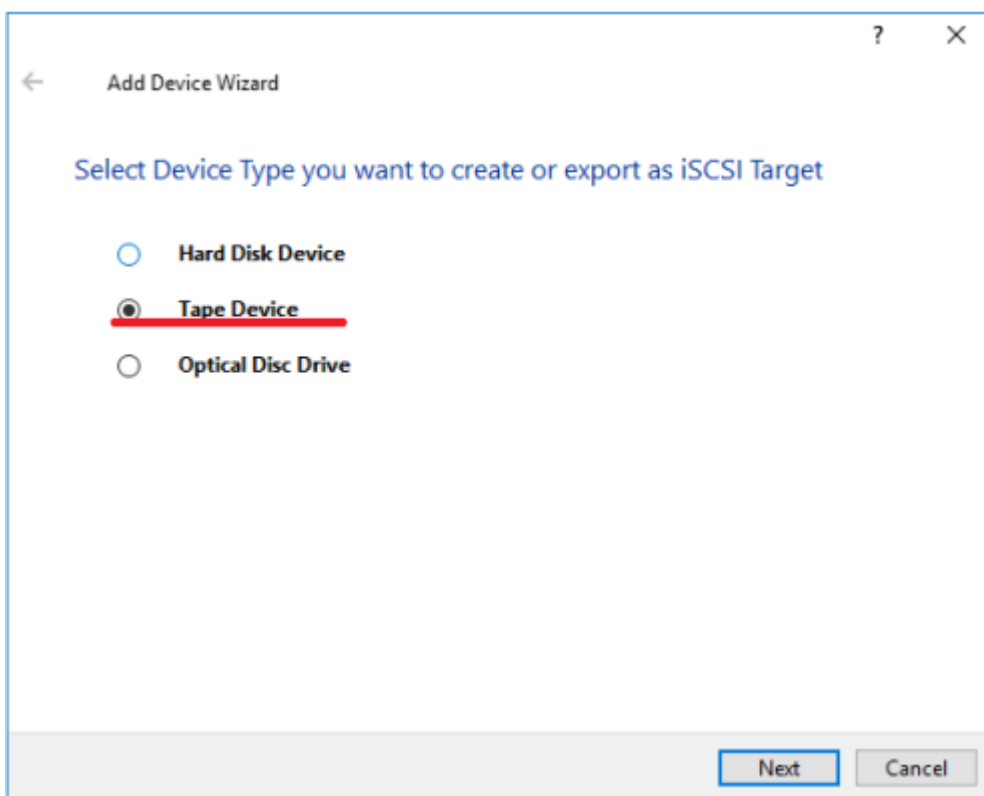
Expected Result

Following the guide, users should be able to successfully share the tape library in the network and connect it for direct backup to tape operation. This setup is designed to streamline backup processes in virtualized environments using the iSCSI protocol.

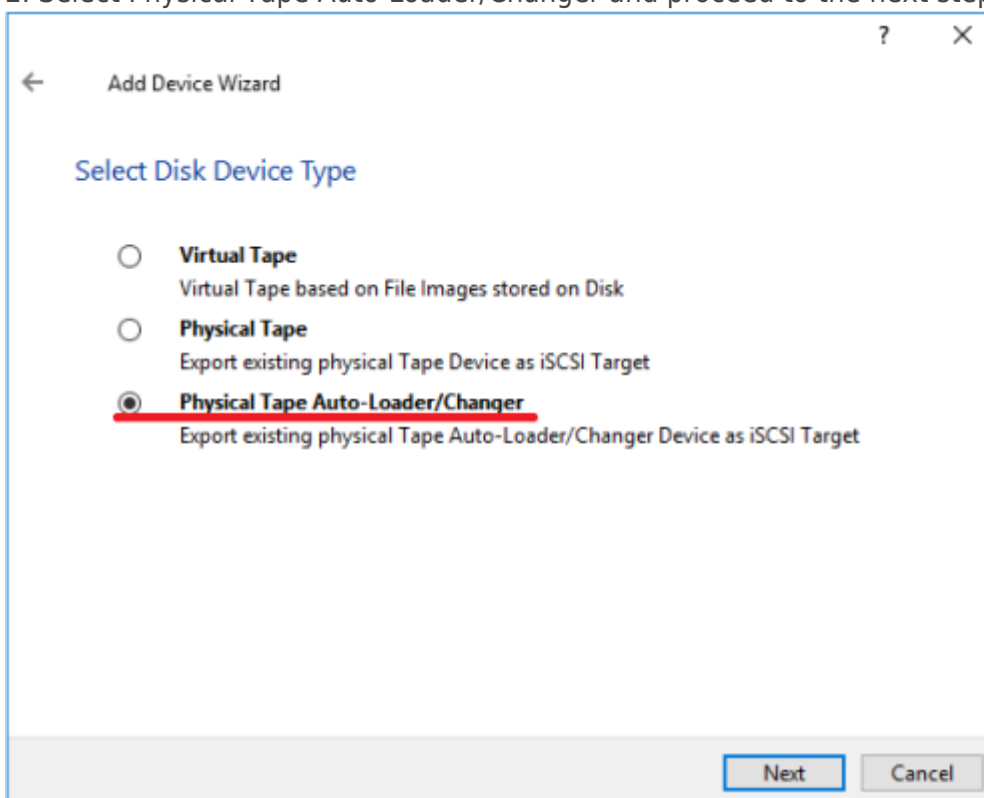
Implementing Starwind Tape Redirector

NOTE: This document assumes that StarWind Virtual SAN is already installed on the server which is connected to the Tape Library.

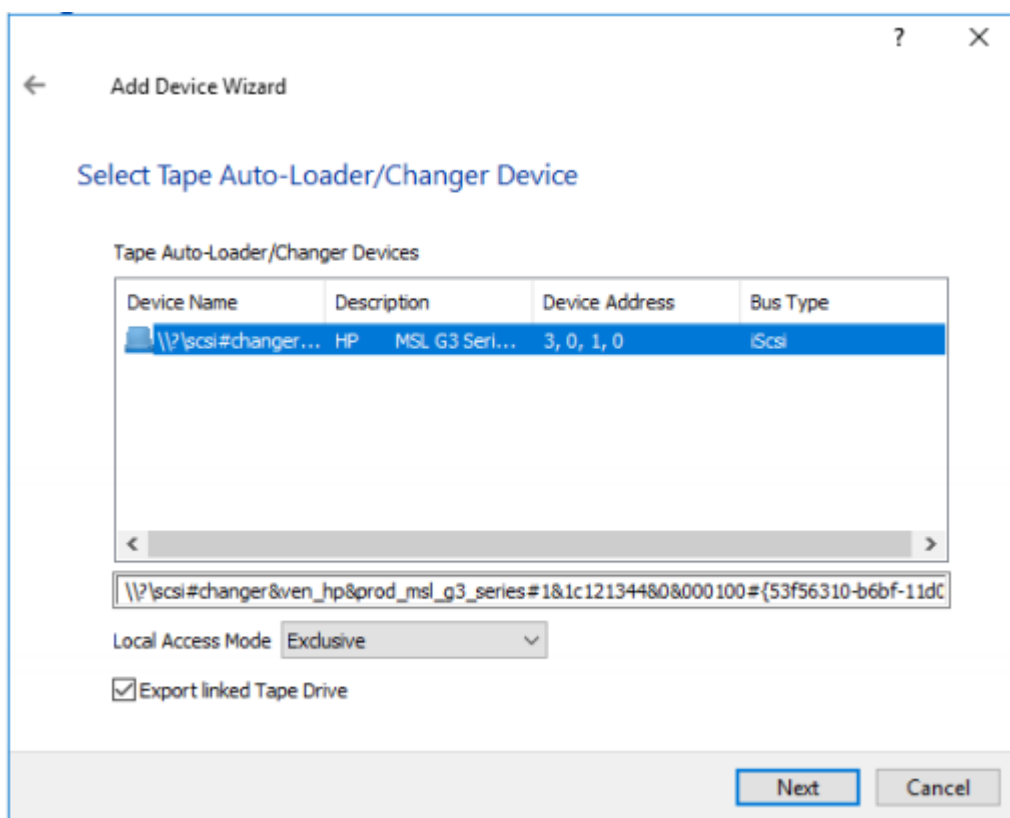
1. In StarWind Virtual SAN Management Console, click Add device (advanced), select Tape Device and click Next:



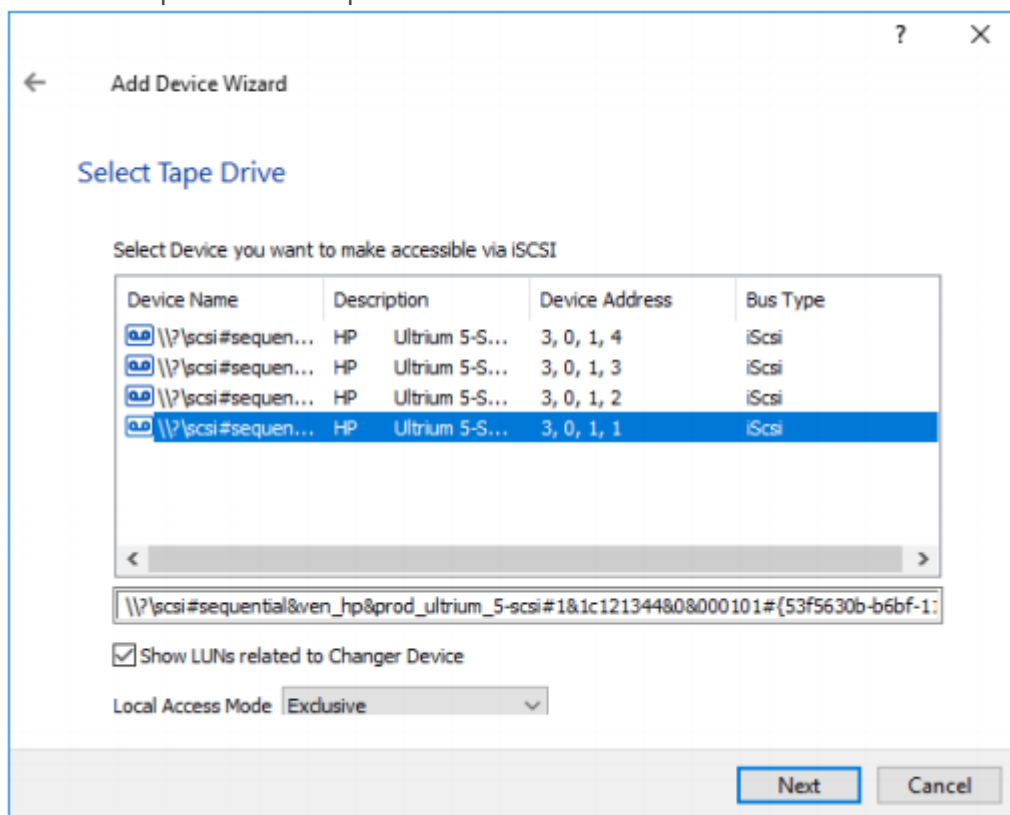
2. Select Physical Tape Auto-Loader/Changer and proceed to the next step.



3. Select Tape Auto-Loader/Changer Device to export and select local Access Mode for it.



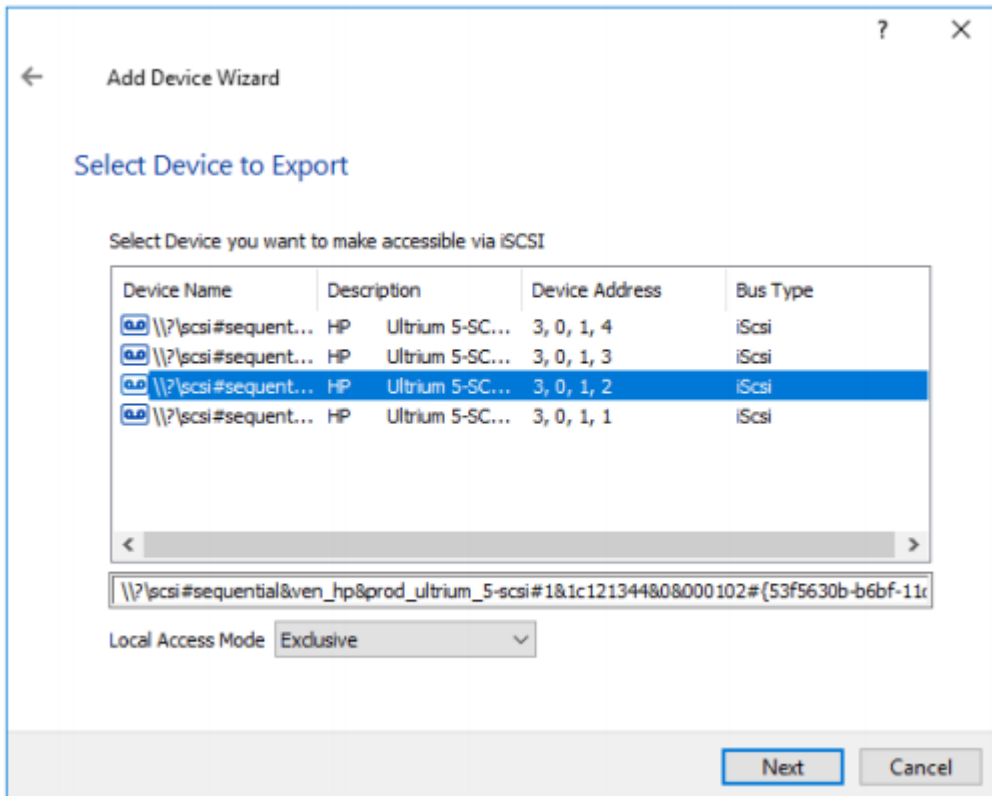
4. Select Tape Drive to export and the Access Mode.



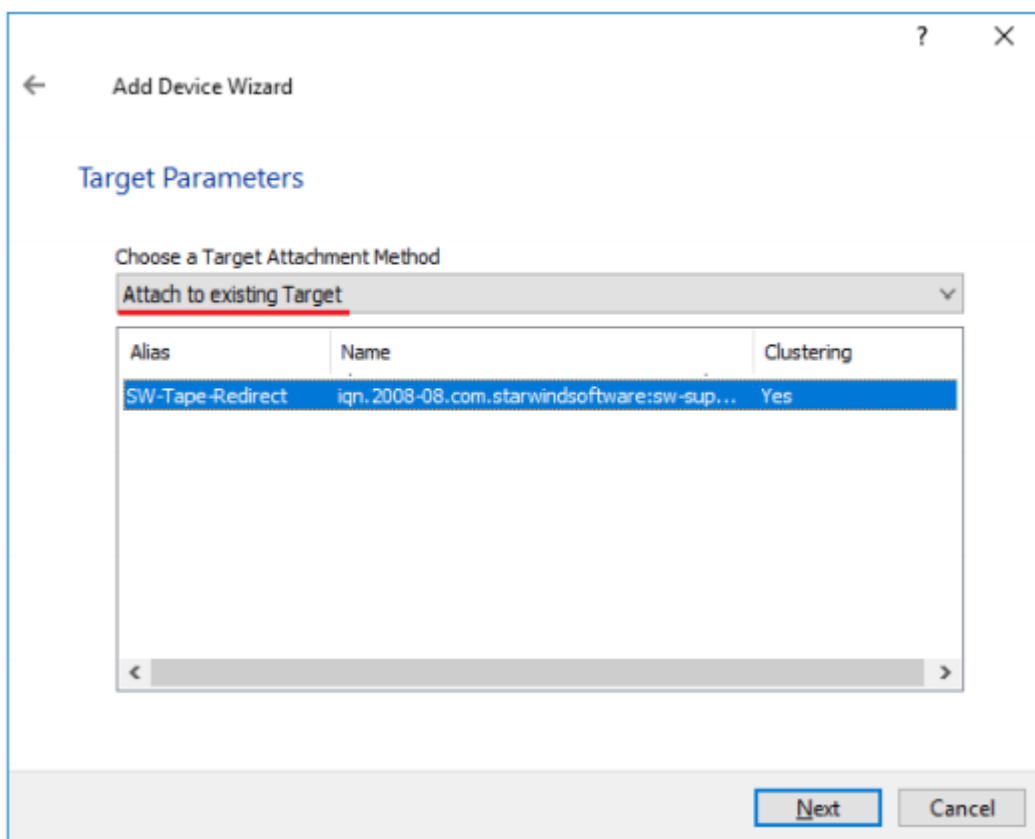
5. Enter Target Alias if needed and check the box Allow multiple concurrent iSCSI Connections. The target name generates automatically and must be unique.

NOTE: The target name should contain only letters from A to Z, numbers, points, dashes, ":" and should not contain spaces.

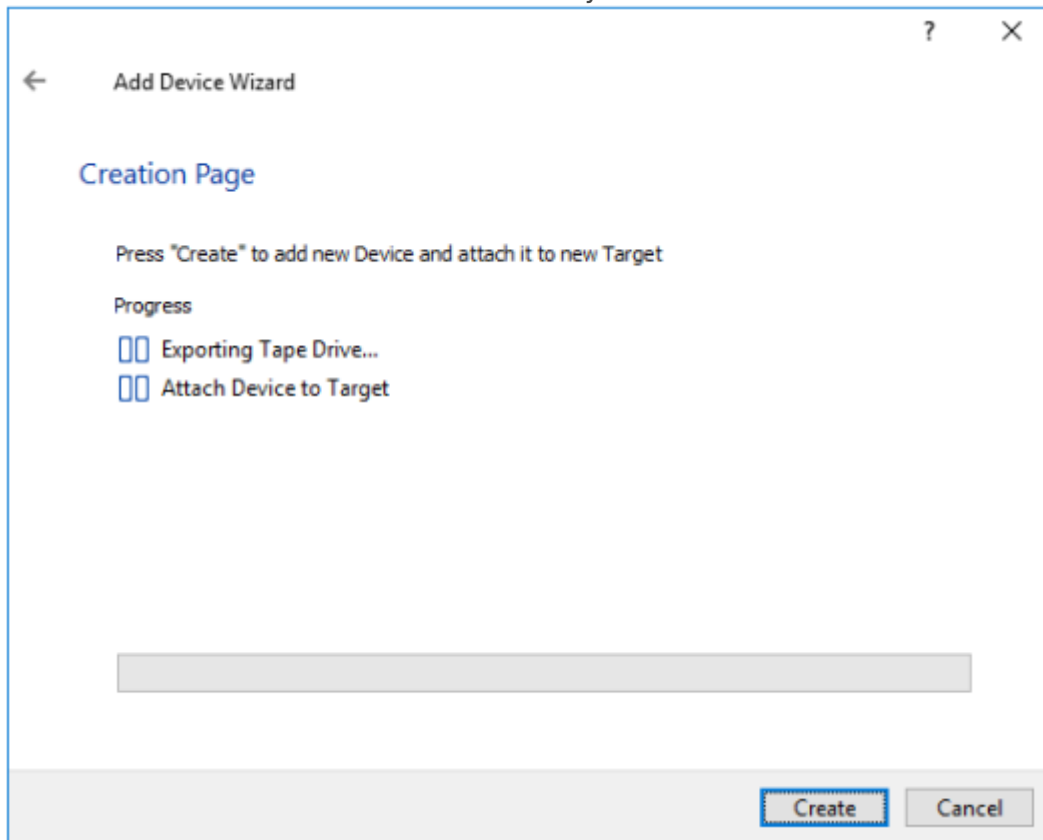
6. Click the Create button to add a new device and attach it to the target.
7. The newly created device and the target will appear in the StarWind Management Console.
8. To add more devices, open StarWind Management Console, click the Add device (advanced) button, and select Tape Device.
9. Select Physical Tape.
10. Select a tape drive to export and select Access Mode for it.



11. Choose Attach to existing Target as a target attachment method and select the required target.

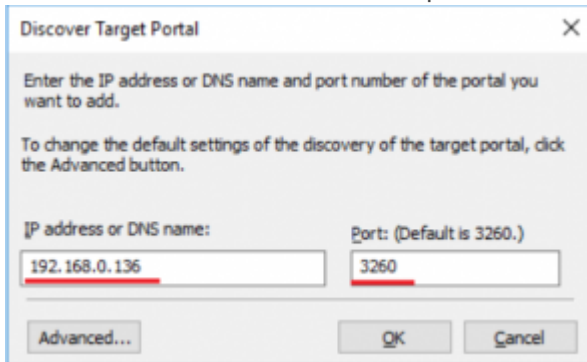


13. Press the Create button to add the newly created device.

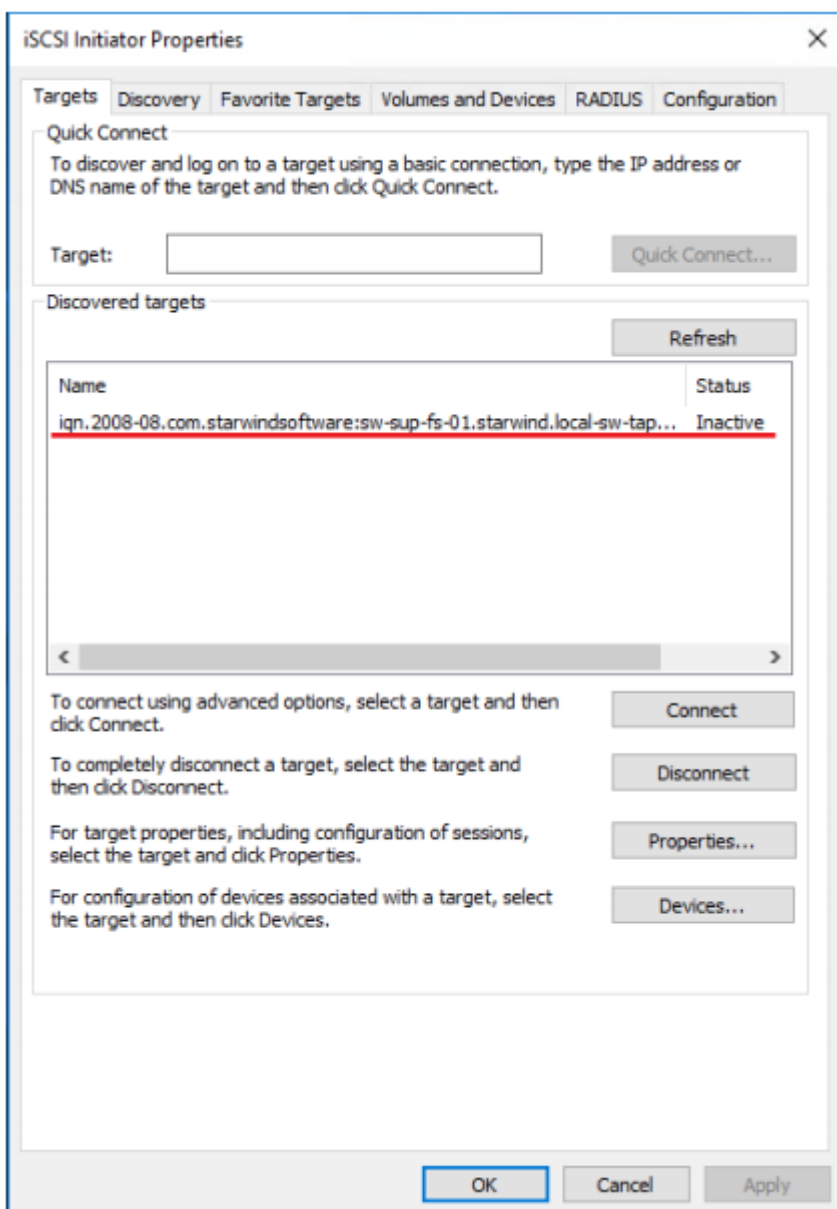


Connecting To A Remote Device Using Iscsi Initiator

1. Launch Microsoft iSCSI Software Initiator on the server to connect the Tape Library to.
2. Switch to the Discovery tab and click the Discover Portal button.
3. Type the appropriate IP address or DNS name and the Port number (default: 3260) of the StarWind host where the Tape Redirector has been configured.

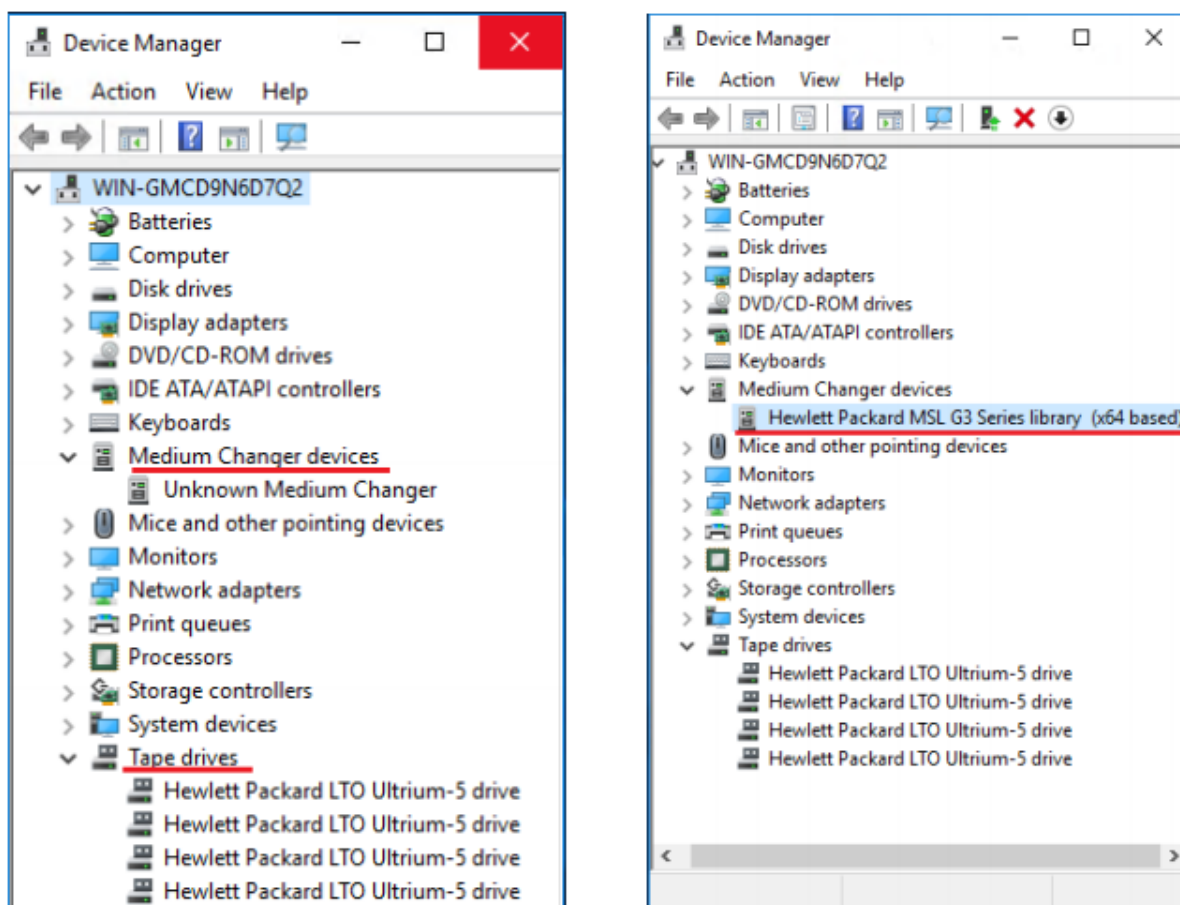


4. Switch to the Targets tab and select the created target (if no targets are listed, click the Refresh button).



5. Press the Connect button. The Connect to Target window appears. If there is no need automatically restore the connection after the system restart, uncheck the option Add this connection to the list of Favorite Targets.

6. Now, Tape drives and Medium Changer devices will appear as the local ones. Install drivers for Unknown Medium Changer device to for it to be displayed properly in Device Manager.






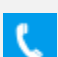
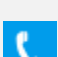


7. Now, a backup software can use the Tape Library directly to create backups.

Conclusion

The StarWind Tape Redirector Installation Guide is a crucial resource for integrating tape backup systems with IT environments. By following these instructions, users can effectively connect to tape libraries, enhancing the efficiency and availability of backup resources in the IT environment.

Contacts

| US Headquarters | EMEA and APAC |
|--|---|
|  +1 617 829 44 95 |  +44 2037 691 857 (United Kingdom) |
|  +1 617 507 58 45 |  +49 800 100 68 26 (Germany) |
|  +1 866 790 26 46 |  +34 629 03 07 17 (Spain and Portugal) |
| |  +33 788 60 30 06 (France) |

Customer Support Portal: <https://www.starwind.com/support>

Support Forum: <https://www.starwind.com/forums>

Sales: sales@starwind.com

General Information: info@starwind.com



StarWind Software, Inc. 100 Cummings Center Suite 224-C Beverly MA 01915, USA
www.starwind.com ©2024, StarWind Software Inc. All rights reserved.