

StarWind Tape Redirector

APRIL, 2019

TECHNICAL PAPERS



Trademarks

“StarWind”, “StarWind Software” and the StarWind and the StarWind Software logos are registered trademarks of StarWind Software. “StarWind LSFS” is a trademark of StarWind Software which may be registered in some jurisdictions. All other trademarks are owned by their respective owners.

Changes

The material in this document is for information only and is subject to change without notice. While reasonable efforts have been made in the preparation of this document to assure its accuracy, StarWind Software assumes no liability resulting from errors or omissions in this document, or from the use of the information contained herein. StarWind Software reserves the right to make changes in the product design without reservation and without notification to its users.

Technical Support and Services

If you have questions about installing or using this software, check this and other documents first - you will find answers to most of your questions on the [Technical Papers](#) webpage or in [StarWind Forum](#). If you need further assistance, please [contact us](#) .

About StarWind

StarWind is a pioneer in virtualization and a company that participated in the development of this technology from its earliest days. Now the company is among the leading vendors of software and hardware hyper-converged solutions. The company’s core product is the years-proven StarWind Virtual SAN, which allows SMB and ROBO to benefit from cost-efficient hyperconverged IT infrastructure. Having earned a reputation of reliability, StarWind created a hardware product line and is actively tapping into hyperconverged and storage appliances market. In 2016, Gartner named StarWind “Cool Vendor for Compute Platforms” following the success and popularity of StarWind HyperConverged Appliance. StarWind partners with world-known companies: Microsoft, VMware, Veeam, Intel, Dell, Mellanox, Citrix, Western Digital, etc.

Copyright ©2009-2018 StarWind Software Inc.

No part of this publication may be reproduced, stored in a retrieval system, or transmitted in any form or by any means, electronic, mechanical, photocopying, recording or otherwise, without the prior written consent of StarWind Software.

Introduction To Starwind Tape Redirector

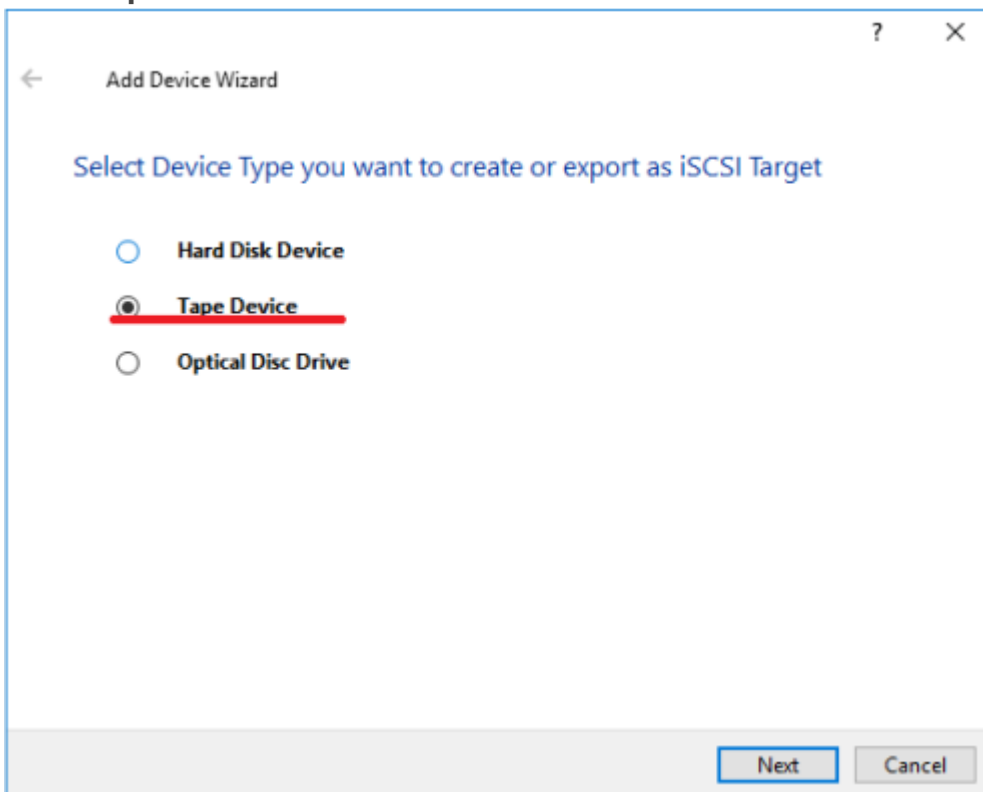
StarWind Tape Redirector acts as a translation layer between virtual machines and the tape library, providing VMs with the interface for accessing the tape hardware. As a result, VMs are able to connect to the tape drives and perform backups directly to the tape library via iSCSI in loopback.

The Tape Redirector should be installed on a server with the attached tape drive, creating an iSCSI “gateway” to a tape library. Thus, any backup application located on a remote server can transfer data to tapes over LAN or WAN using SCSI over TCP (iSCSI) protocol.

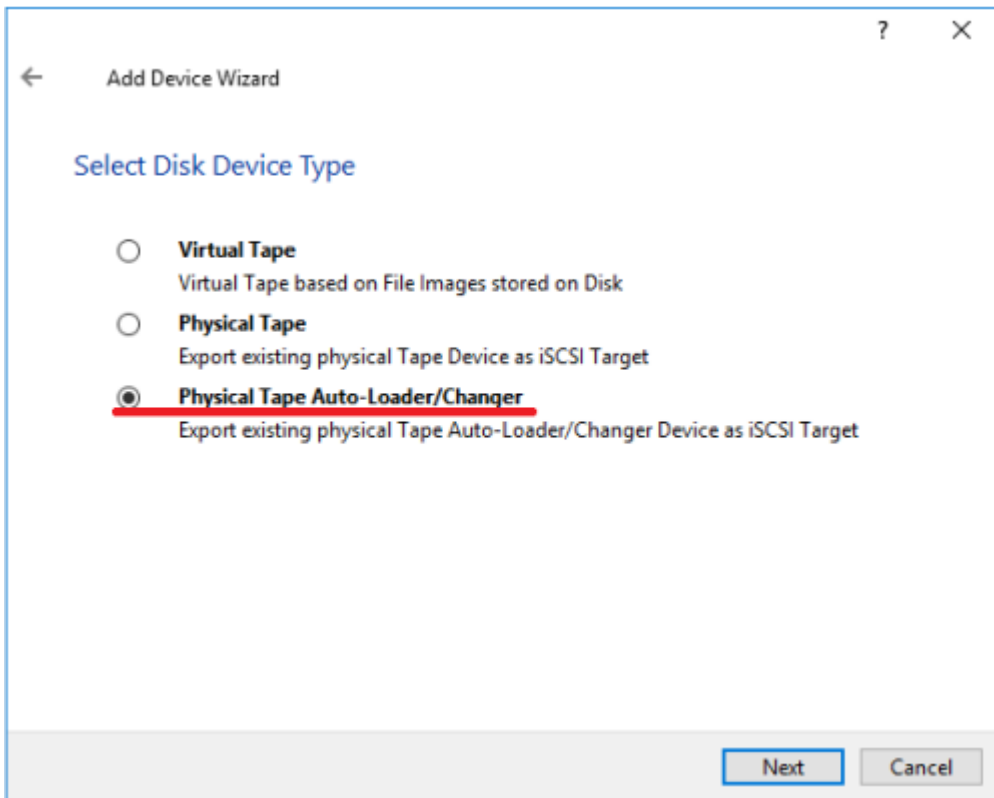
Implementing Starwind Tape Redirector

NOTE: This document assumes that StarWind Virtual SAN is already installed on the server which is connected to the Tape Library.

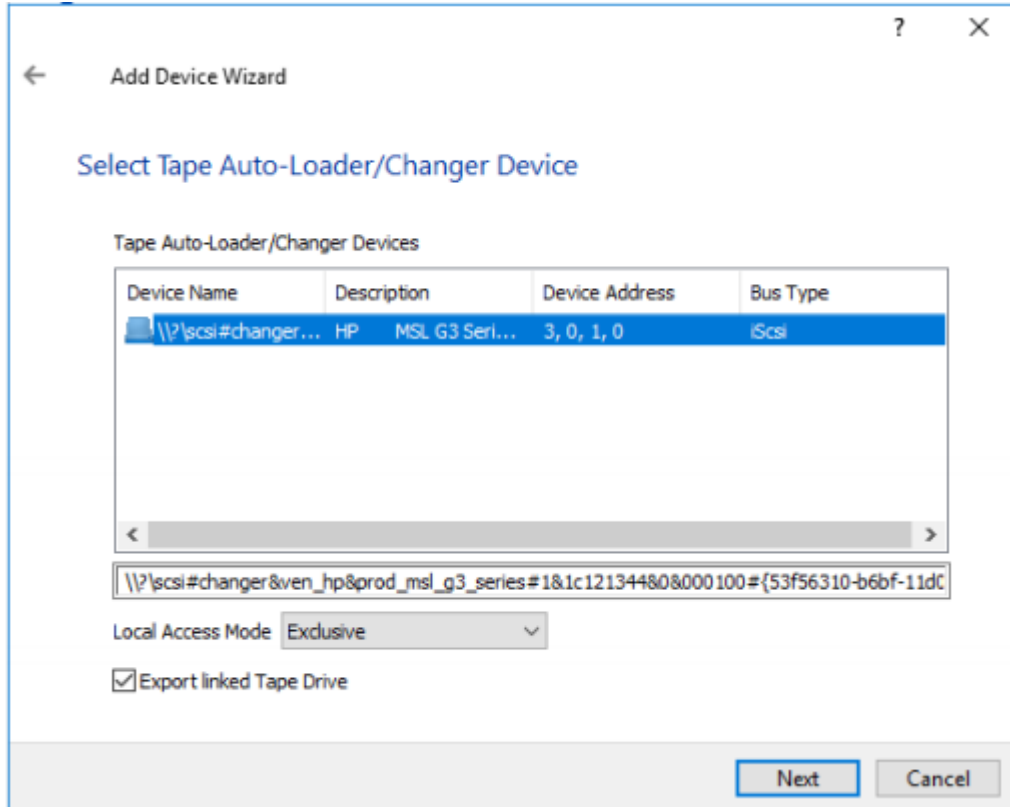
1. In StarWind Virtual SAN Management Console, click **Add device (advanced)**, select **Tape Device** and click **Next**:



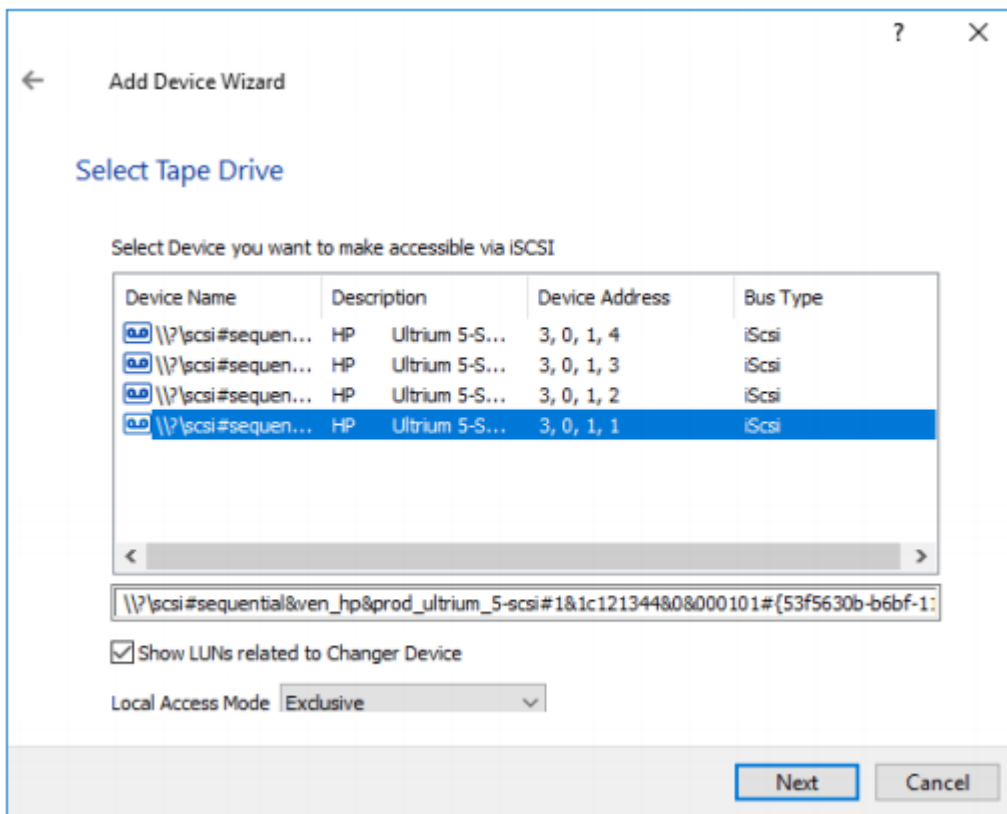
2. Select **Physical Tape Auto-Loader/Changer** and proceed to the next step.



3. Select **Tape Auto-Loader/Changer Device** to export and select local **Access Mode** for it.



4. Select **Tape Drive** to export and the **Access Mode**.



5. Enter **Target Alias** if needed and check the box **Allow multiple concurrent iSCSI Connections**. The target name generates automatically and must be unique.

NOTE: The target name should contain only letters from A to Z, numbers, points, dashes, ":" and should not contain spaces.

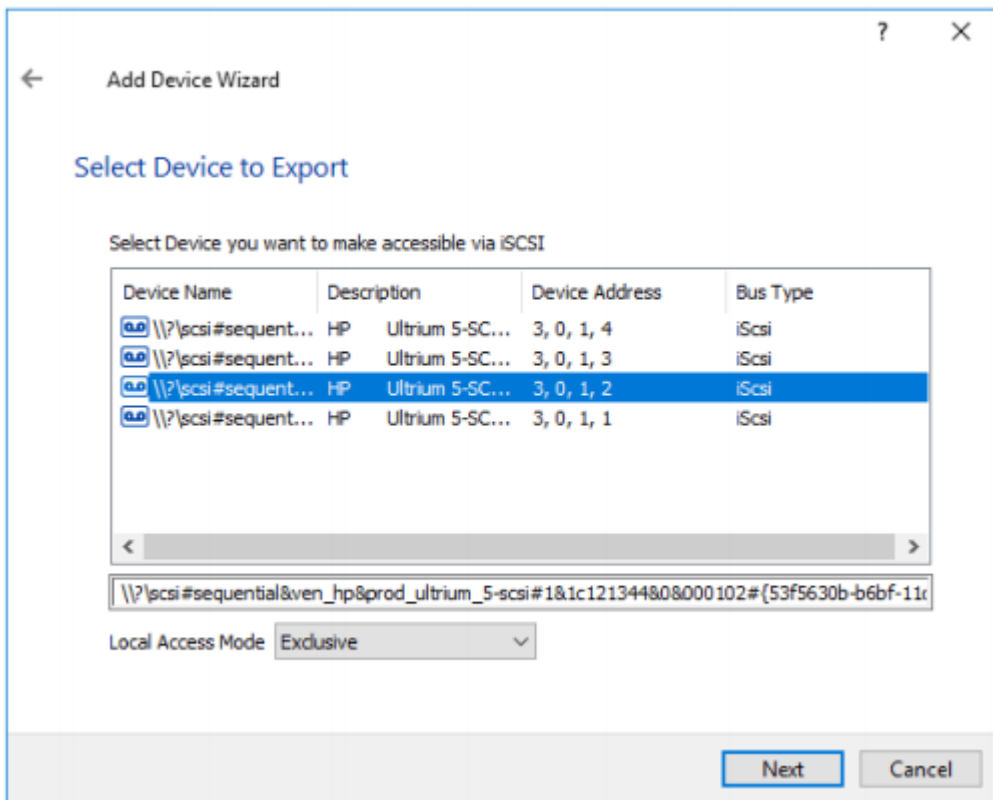
6. Click the **Create** button to add a new device and attach it to the target.

7. The newly created device and the target will appear in the **StarWind Management Console**.

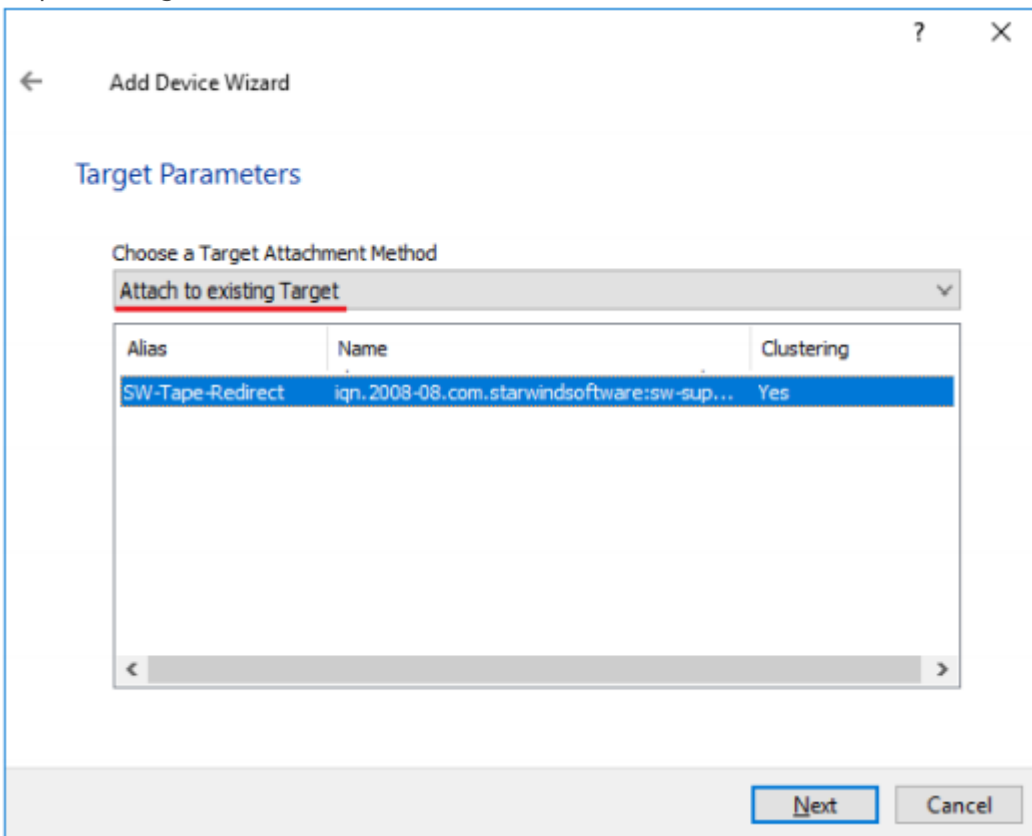
8. To add more devices, open StarWind Management Console, click the **Add device (advanced)** button, and select **Tape Device**.

9. Select **Physical Tape**.

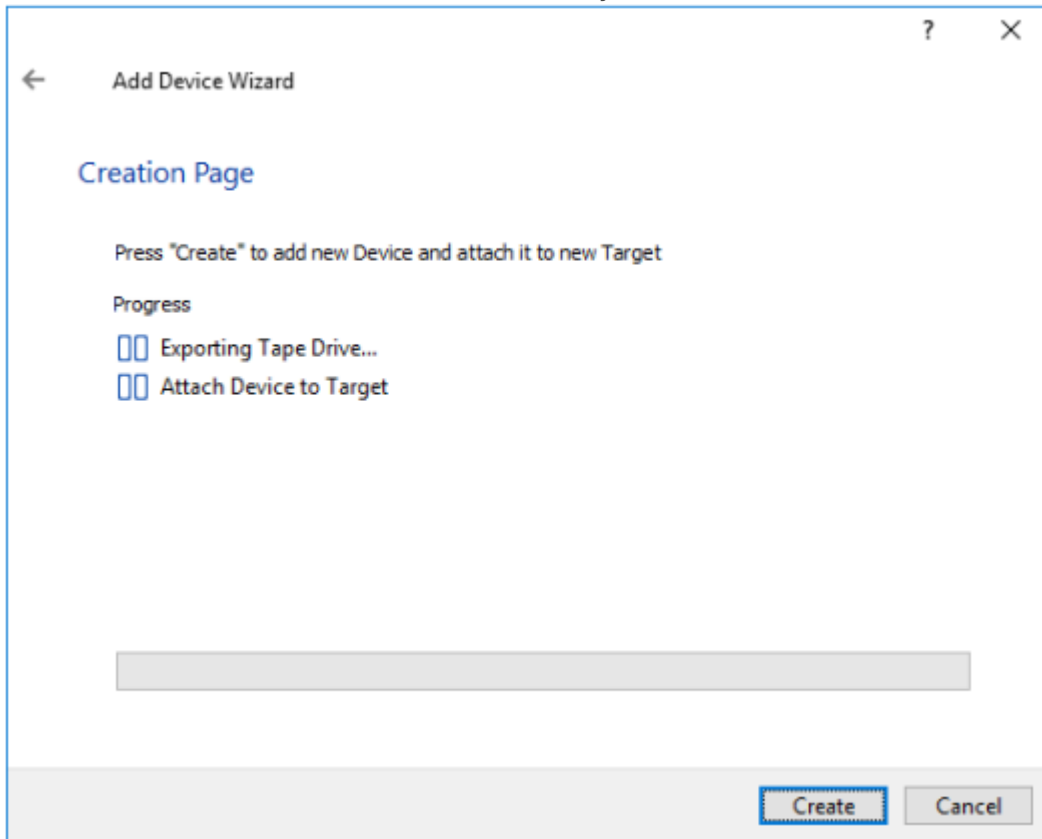
10. Select a tape drive to export and select **Access Mode** for it.



11. Choose **Attach to existing Target** as a target attachment method and select the required target.

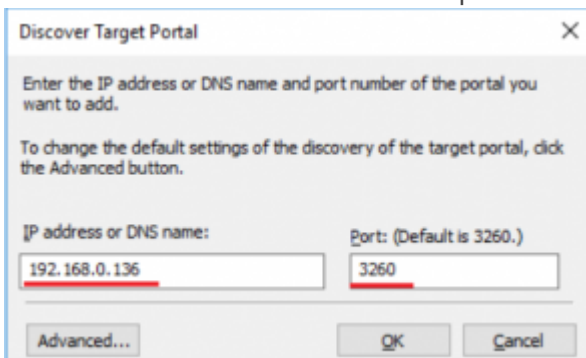


13. Press the **Create** button to add the newly created device.

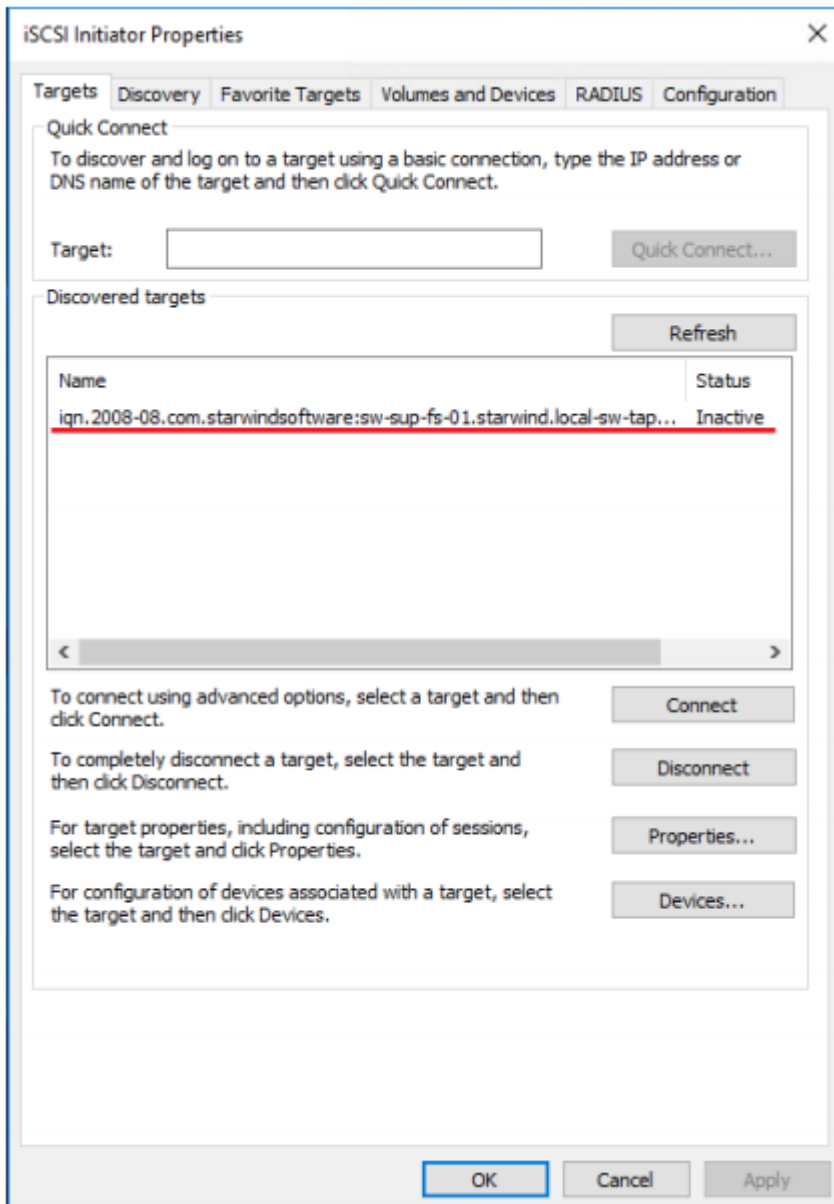


Connecting To A Remote Device Using Iscsi Initiator

1. Launch Microsoft iSCSI Software Initiator on the server to connect the Tape Library to.
2. Switch to the **Discovery** tab and click the **Discover Portal** button.
3. Type the appropriate **IP address or DNS name** and the **Port** number (default: 3260) of the StarWind host where the Tape Redirector has been configured.

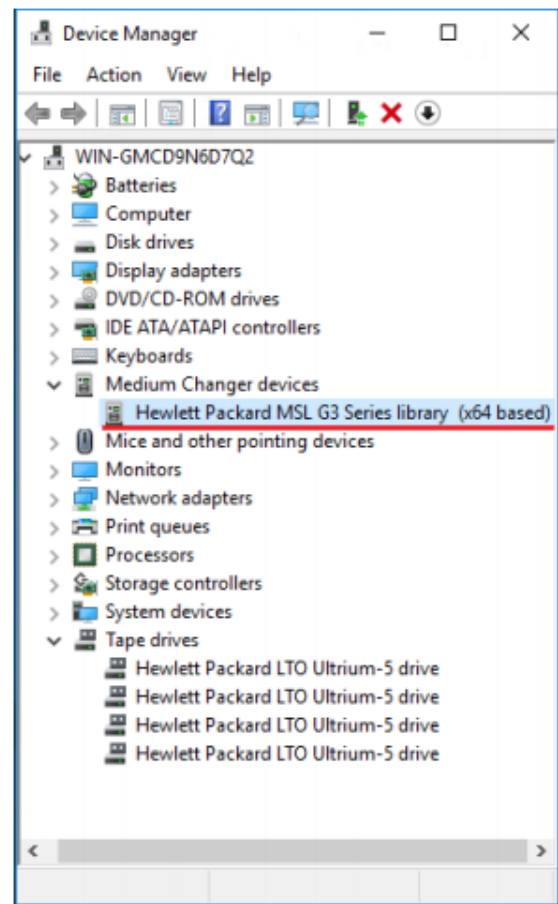
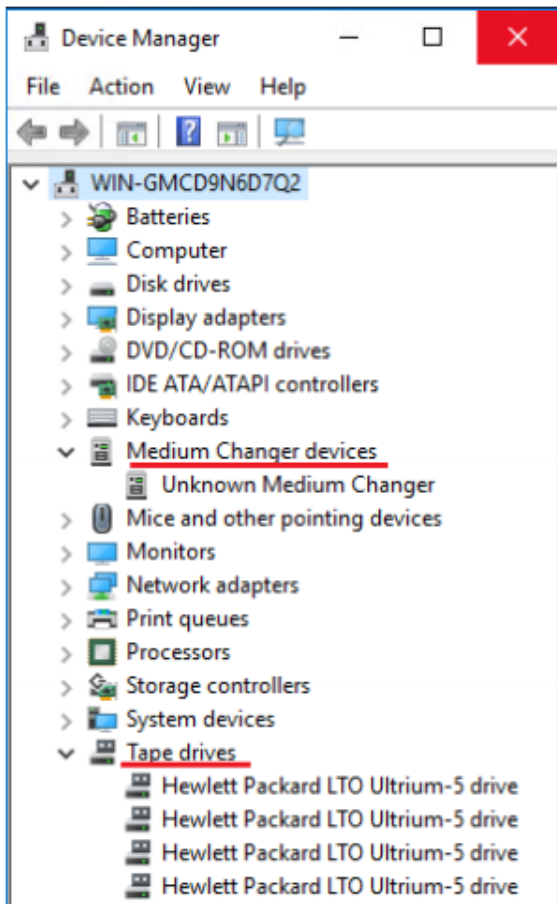


4. Switch to the **Targets** tab and select the created target (if no targets are listed, click the **Refresh** button).








5. Press the **Connect** button. The **Connect to Target** window appears. If there is no need automatically restore the connection after the system restart, uncheck the option **Add this connection to the list of Favorite Targets**.

6. Now, **Tape drives** and **Medium Changer devices** will appear as the local ones. Install drivers for **Unknown Medium Changer** device to for it to be displayed properly in **Device Manager**.



7. Now, a backup software can use the Tape Library directly to create backups.

Contacts

US Headquarters	EMEA and APAC
 1-617-449-77 17	 +44 203 769 18 57 (UK)
 1-617-507-58 45	 +34 629 03 07 17
 1-866-790-26 46	(Spain and Portugal)

Customer Support Portal: <https://www.starwind.com/support>

Support Forum: <https://www.starwind.com/forums>

Sales: sales@starwind.com

General Information: info@starwind.com



StarWind Software, Inc. 35 Village Rd., Suite 100, Middleton, MA 01949 USA

www.starwind.com

©2019, StarWind Software Inc. All rights reserved.