

# StarWind Virtual SAN<sup>®</sup>

## Enable iSER

2018

TECHNICAL PAPERS



## Trademarks

“StarWind”, “StarWind Software” and the StarWind and the StarWind Software logos are registered trademarks of StarWind Software. “StarWind LSFS” is a trademark of StarWind Software which may be registered in some jurisdictions. All other trademarks are owned by their respective owners.

## Changes

The material in this document is for information only and is subject to change without notice. While reasonable efforts have been made in the preparation of this document to assure its accuracy, StarWind Software assumes no liability resulting from errors or omissions in this document, or from the use of the information contained herein. StarWind Software reserves the right to make changes in the product design without reservation and without notification to its users.

## Technical Support and Services

If you have questions about installing or using this software, check this and other documents first - you will find answers to most of your questions on the [Technical Papers](#) webpage or in [StarWind Forum](#). If you need further assistance, please [contact us](#) .

## About StarWind

StarWind is a pioneer in virtualization and a company that participated in the development of this technology from its earliest days. Now the company is among the leading vendors of software and hardware hyper-converged solutions. The company’s core product is the years-proven StarWind Virtual SAN, which allows SMB and ROBO to benefit from cost-efficient hyperconverged IT infrastructure. Having earned a reputation of reliability, StarWind created a hardware product line and is actively tapping into hyperconverged and storage appliances market. In 2016, Gartner named StarWind “Cool Vendor for Compute Platforms” following the success and popularity of StarWind HyperConverged Appliance. StarWind partners with world-known companies: Microsoft, VMware, Veeam, Intel, Dell, Mellanox, Citrix, Western Digital, etc.

## Copyright ©2009-2018 StarWind Software Inc.

No part of this publication may be reproduced, stored in a retrieval system, or transmitted in any form or by any means, electronic, mechanical, photocopying, recording or otherwise, without the prior written consent of StarWind Software.

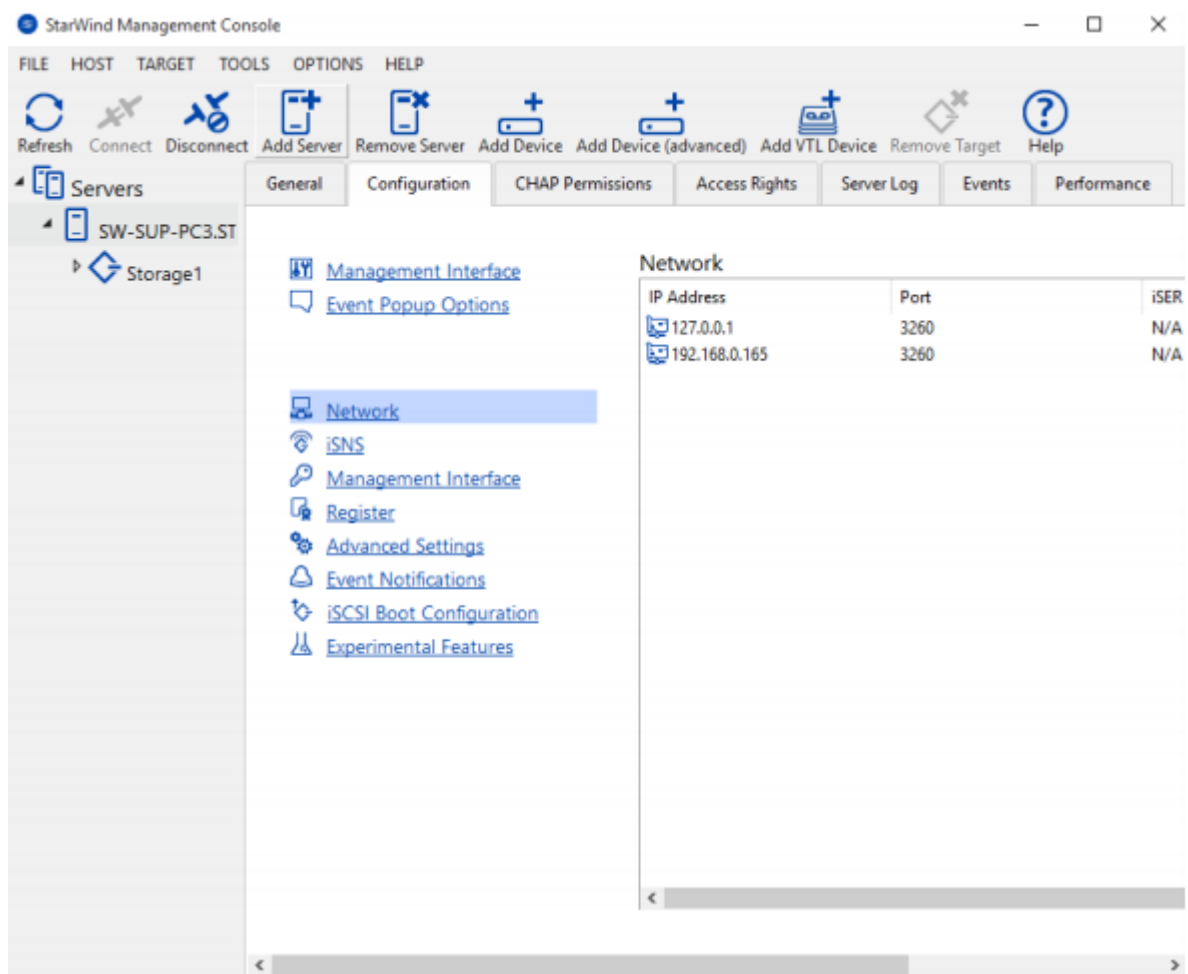
## Introduction

In addition to the industry-standard uplink protocols, StarWind Virtual SAN supports iSER, the topnotch data transfer extension of iSCSI for RDMA. The protocol has low latency and CPU utilization. What is more, it has inherited from iSCSI its security and simplicity advantages. With RDMA protocol suite, iSER supplies higher bandwidth for block storage transfers. These features are crucial for building virtualized or cloud environments, where the protocol allows boosting VMs' migration and data replication.

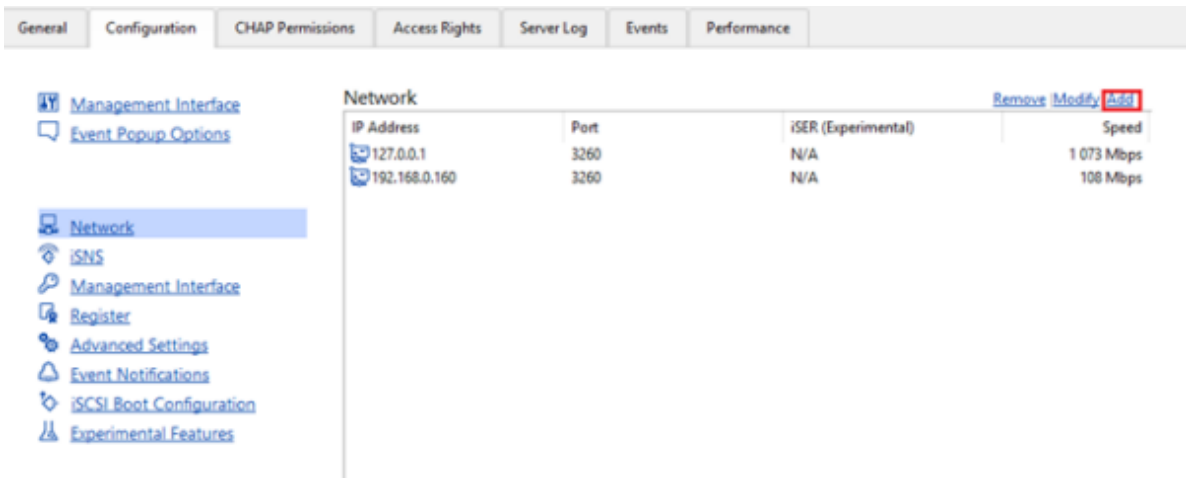
**NOTE:** This guide assumes that the server and StarWind Virtual SAN are already configured.

## Enabling Iser Support

1. Select the StarWind server where the iSER support is intended to be enabled.
2. Press the **Configuration** button.
3. Navigate to the **Network** tab.

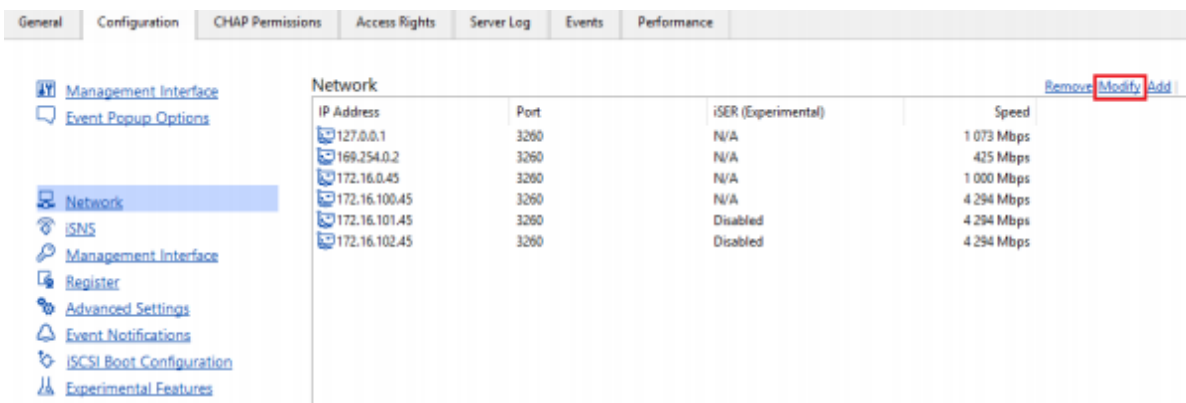


4. Click **Add** to append new network connections.

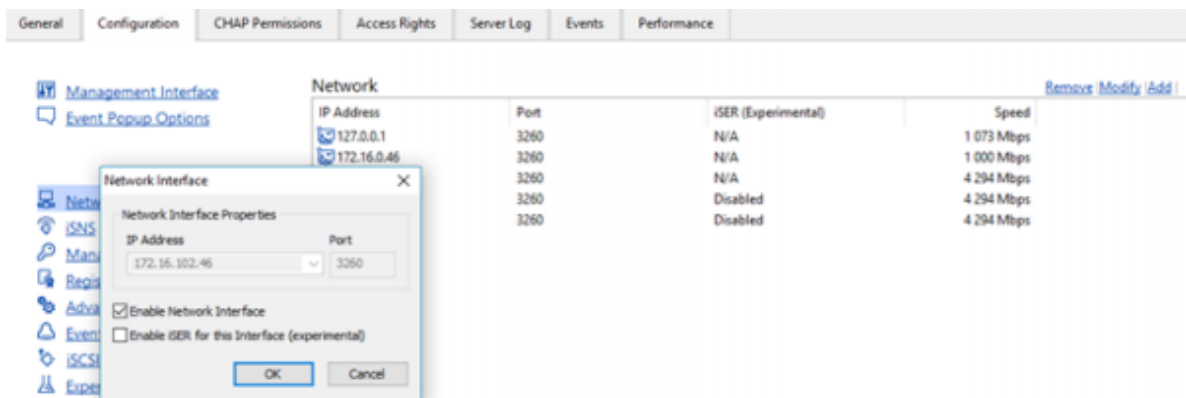


5. Select the network interface on which iSER should be enabled.

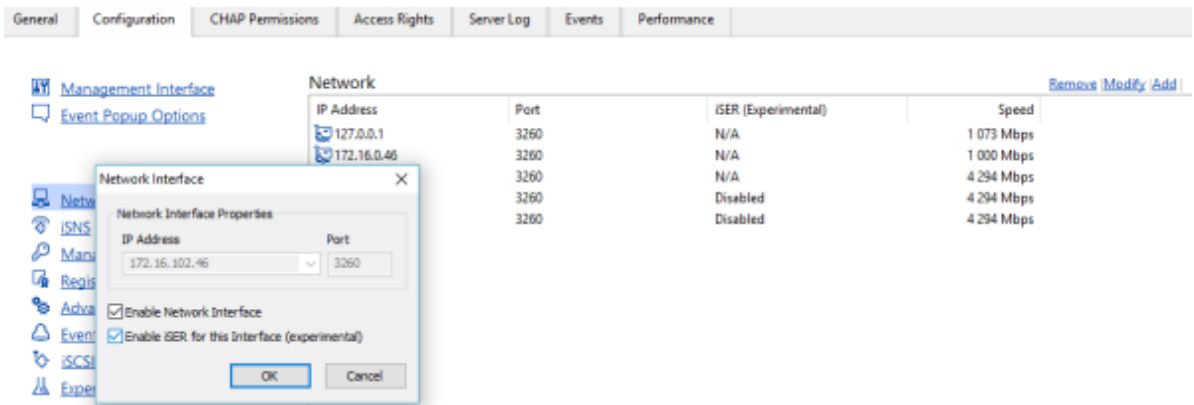
6. Click the **Modify** button.



7. The **Network Interface** tab will appear.

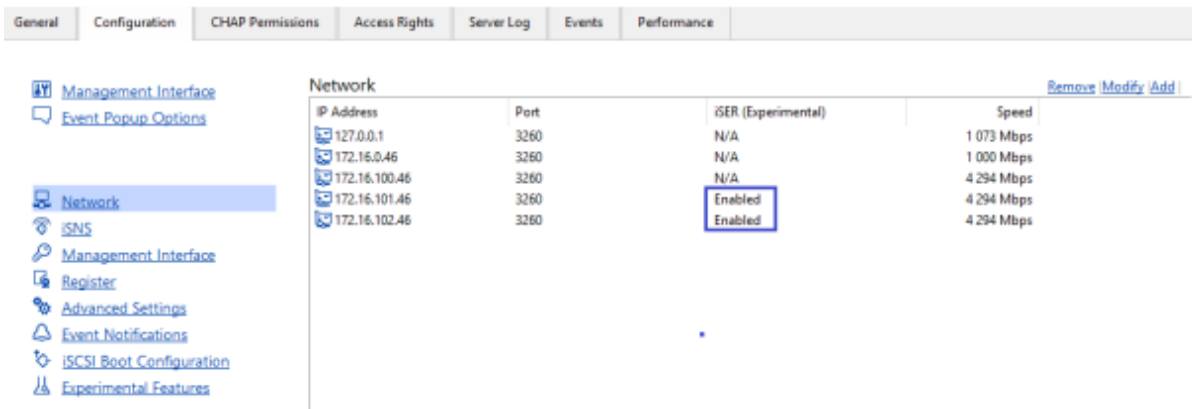


8. Select **Enable iSER for this Interface (experimental)**.









Click **OK**.

9. Check whether the iSER feature has been **Enabled** successfully.



## Contacts

US Headquarters	EMEA and APAC
 +1 617 449 77 17	 +44 203 769 18 57 (UK)
 +1 617 507 58 45	 +49 800 100 68 26 (Germany)
 +1 866 790 26 46	 +34 629 03 07 17 (Spain and Portugal)
	 +7 495 975 94 39 (Russian Federation and CIS)

Customer Support Portal: <https://www.starwind.com/support>

Support Forum: <https://www.starwind.com/forums>

Sales: [sales@starwind.com](mailto:sales@starwind.com)

General Information: [info@starwind.com](mailto:info@starwind.com)



**StarWind Software, Inc.** 100 Cummings Center Suite 224-C Beverly MA 01915, USA  
[www.starwind.com](http://www.starwind.com) ©2021, StarWind Software Inc. All rights reserved.