

StarWind iSCSI SAN & NAS V6

Storage Hypervisor that Provides Top-Grade Continuous Availability, and Deduplication-Based Storage Efficiency

WHAT'S NEW

- Three-way synchronous mirroring
- Data deduplication
- On-site HA with off-site replication over WAN
- Clustered scale-out NAS*
- Storage aggregation

BENEFITS

- 99.9999% uptime
- 50% higher performance (compared to 2-node config)
- Hardware-agnostic
- No single point of failure
- Minimized TCO
- Accelerated ROI

RECOMMENDED SYSTEM REQUIREMENTS

- Windows Server 2008 R2 (with SP1 installed)
- 2 GHz Intel Xeon class processor
- 4 GB of RAM
- 1 GB of free disk space to store application data and log files
- Dedicated disk volumes
- 1 or 10 GbE Ethernet (10 GbE is recommended)

*Clustered scale-out NAS requires Windows Server 2008 R2 Enterprise or Datacenter edition

STARWIND IS CERTIFIED BY:

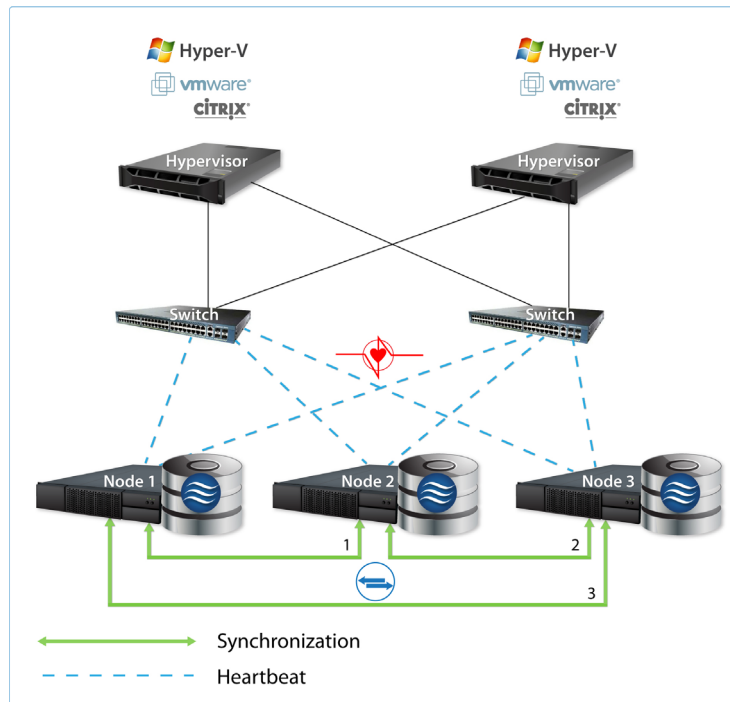


We are happy to provide our customers with the best price/performance ratio and introduce the following upgrades and enhancements in StarWind iSCSI SAN & NAS V6.

Synchronous mirroring between THREE clustered SAN/NAS nodes: 99.9999% uptime NEW

StarWind now offers synchronous mirroring between three nodes of an HA cluster. Thus, StarWind makes your SAN resilient against hardware or software failures, and ensures 50% higher performance (compared to 2-node configuration).

With highly available StarWind storage, you can safely upgrade your system and maintain or replace your hardware with truly **ZERO downtime**. During the maintenance or single node failure the storage cluster stays redundant and survives double fault.



Schema: StarWind tripled SAN/NAS cluster

Asynchronous replication over WAN (with acceleration): N+1 configuration NEW

StarWind introduces a N+1 configuration that you can use to build on-site two/three-node HA cluster with off-site replication. StarWind built-in WAN Replication creates a "last resort" disaster recovery (DR) site that can be located miles away from the main datacenter. It keeps a mirror copy of your data; if your primary storage cluster fails, you can initiate a recovery process from your remote DR site. Such a N+1 configuration provides outstanding protection for your data and enables you to meet Recovery Point Objective (RPO) at all times.

StarWind WAN acceleration technology is based on deduplication, snapshots, and compression. Their combined power ensures 50x-100x reduction of transmitted data and allows for the use of slow WAN connection.

TECHNICAL SUPPORT

StarWind provides 24/7 qualified technical support. Contact us at: www.starwindsoftware.com/support

TEST STARWIND STORAGE HYPERVISOR BY YOURSELF!

30-day **FREE TRIAL** version of StarWind is available at: www.starwindsoftware.com/starwind-iscsi-san-overview

ENHANCE YOUR DR PLAN WITH POWERFUL STARWIND HYPER-V/VMWARE BACKUP:

- Agentless architecture
- Global deduplication
- Hypervisor-native format of archives (VHD, VMDK)
- Single-click backup

Data deduplication

StarWind delivers in-line target-side deduplication. With this powerful technology StarWind users save up to 90% of disk space required for their data. As a result, StarWind maximizes resource utilization and minimizes disk space consumption.

StarWind dedupe drastically cuts down storage space requirements and the amount of redundant data across datacenter, decreasing storage expenses regardless of the data growth.

The StarWind company is attentive to the needs of its customers. Therefore, StarWind iSCSI SAN & NAS V6 provides one of the most asked-for scenarios - high availability on deduplicated target!

Clustered scale-out NAS **NEW**

Clustered NAS (NFS & CIFS/SMB) is configured on top of highly available iSCSI SAN. StarWind consolidates file and block level data in the common storage pool, thereby creating unified SAN/ NAS storage.

Consolidated storage simplifies configuration and maintenance and increases storage utilization rates. It has lower Total Cost of Ownership (TCO) and reduces initial capital and recurrent operational expenditures.

Storage aggregation **NEW**

StarWind enables use of NAS for the creation of iSCSI targets, and thereby saves money on the purchase of new hard drives for local purposes.

With StarWind you can use NAS resources to create a reliable and sophisticated iSCSI SAN. Thus, StarWind aggregates storage for the virtualization infrastructure and file sharing for a company.

StarWind is simple to deploy and easy to use

StarWind iSCSI SAN & NAS V6 is a hardware agnostic-solution that uses common off-the-shelf hardware (COTS). The software can be installed and configured within minutes on any industry standard server.

You can easily apply your existing servers and network infrastructure in order to save money and avoid purchase of a new hardware. If you decide to buy brand-new hardware, you can pick up any vendor depending on your choice: with StarWind there is no vendor lock-in.

StarWind provides Centralized Management Console and self-guided wizards, and it has a user-friendly intuitive interface.

ABOUT STARWIND

Since 2003, StarWind has been a pioneer in the iSCSI storage industry and has been the solution of choice for thousands of global customers in over 50 countries, from SMBs to governments, and to Fortune 1000 clients.

US Headquarters
40 Mall Rd.
Burlington, MA 01803
+1-617-449-7717 Main
+1-617-507-5845 Fax

EMEA and APAC
+44 (0) 207 193-6350
+44 (0) 207 193-6727
Email: sales@starwindsoftware.com

Central EMEA
Monikastr. 13
53757 Sankt Augustin
+49-1715109103
Email: vschmidberger@starwindsoftware.com