

KEY FEATURES

- Mirroring & Replication
- CDP & Snapshots
- Thin Provisioning
- Central Management

USES

- Hyper-V Virtualization
- Server Consolidation
- Disaster Recovery
- Business Continuity
- Server Clustering
- Shared Storage

BENEFITS**ENTERPRISE-CLASS FEATURE FOR SMB/S USING HYPER-V**

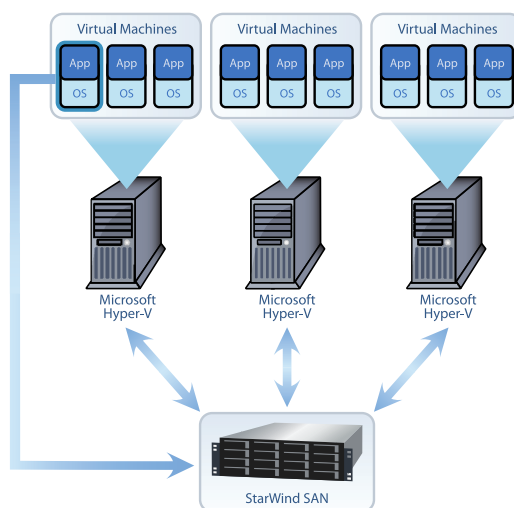
- Performance, reliability, scalability, manageability, availability and speed
- Zero downtime and seamless server upgrades and migrations
- Limit or avoid additional hardware purchases by repurposing existing infrastructure

USES INDUSTRY STANDARD NETWORKING AND SERVERS

No proprietary servers, storage or networking switches required and supports 10 GigE.

STARWIND iSCSI SAN FOR HYPER-V

HIGHER DATA AVAILABILITY, RELIABILITY AND PROTECTION FOR YOUR HYPER-V VIRTUAL MACHINES.



StarWind iSCSI SAN for Hyper-V

STARWIND SAN ADVANTAGES

- Allows IT managers to build a true Hyper-V clusters.
- Simplifies storage management.
- Eliminates single point of failure.
- Integrates seamlessly with Hyper-V.
- Speed data migrations without sacrificing uptime.
- More redundancy and zero downtime.
- Run an iSCSI SAN inside VM itself.

ENHANCE YOUR HYPER-V ENVIRONMENT

By choosing StarWind for your centralized storage, you can make more efficient use of storage resources, eliminate downtime, recover faster, and protect your virtual machines effectively.

INCREASE STORAGE UTILIZATION

Thin Provisioning allows you to purchase only the storage you need today, and add more storage later, if application data grows, without impacting applications or the operating system. Combined with hot swappable drives thin provisioning allows zero down time when expanding LUNs.

REDUCE NEW SERVER PURCHASES

StarWind iSCSI SAN takes advantage of existing servers and storage resources. Transform old servers into enterprise-class SCSI SANs, leveraging your existing IT infrastructure. It's not only Green, it's also affordable!

HIGHER DATA AVAILABILITY

Using StarWind's mirroring and replication features, you can minimize the impact of any disruption you encounter in your iSCSI SAN. In the event of a local service failure, you can fail over to the remote site and continue to deliver access to service.

PROTECT YOUR VIRTUAL MACHINES

By using enterprise-class features such as StarWind CDP & Snapshots, users can access lost data fast by recovering to a point prior to a failure on a volume-by-volume basis. Combined with Microsoft clusters, you can ensure that your applications will always be running and that your data will always be available.

EASILY MANAGE YOUR STORAGE

Use our simple, yet powerful graphical user interface to manage your SAN.

RECOMMENDED SYSTEM REQUIREMENTS

- Windows Server 2008 R2
- 2 GHz Intel Xeon class processor
- 4 GB of RAM
- 1 GB for application data and log files
- Dedicated disk volumes
- Gigabit Ethernet connection

WHO BUYS STARWIND

StarWind Server is a powerful and reliable iSCSI SAN used by small and midsize businesses, governments, and Fortune 1000 clients.

TECHNICAL SUPPORT

Full-function products deserve full-featured support. Whether you're downloading StarWind to evaluate it, or just need technical support for your SAN, StarWind is always available to help you at www.starwindsoftware.com

READY FOR A TEST DRIVE?

Visit us today at www.starwindsoftware.com

BUILD A HYPER-V SAN IN ABOUT MINUTES

Hyper-V users in small and medium-size businesses can substantially increase the performance, utility and recoverability of their servers with an iSCSI storage solution from StarWind. Compared to other network storage options, a StarWind iSCSI SAN is easy to set up – averaging about 30 minutes. And, it offers all the benefits associated with enterprise-level storage solutions like Fibre Channel without the costs.



StarWind's iSCSI SAN doesn't require costly proprietary equipment or networking investments. Convert any Windows Server into a scalable, high-performance iSCSI SAN for your Hyper-V that runs over existing Ethernet. Users with exceptional performance requirements can run on 10 GigE Ethernet networks to create a StarWind iSCSI SAN that exceeds the performance limits of a Fibre Channel solution without either its high price or the need for personnel-intensive maintenance. Our software-only solution doesn't lock you into proprietary servers, storage or networking equipment.

There is no need to suffer through traditional SAN implementation headaches or invest in training for specialized proprietary platform support expertise. StarWind iSCSI SANs deliver complete access to enterprise-class SAN services to provision networked storage, reduce vulnerability and protect data.

StarWind iSCSI SAN for Microsoft Hyper-V delivers Microsoft VSS (Volume Shadow Copy Services) compatibility, dynamic point-in-time volume snapshots and automatic incremental backups; backups and recoveries are a breeze. All this, plus StarWind's unlimited terabytes of storage, make this a perfect solution for small- to medium-size companies and remote office/branch office (ROBO) installations.

STARWIND SOFTWARE IS COMPATIBLE WITH

- Microsoft Windows Server 2008 R2
- Microsoft Windows Server 2008
- Microsoft Windows Server 2003 R2

StarWind is tested for compatibility with the Microsoft iSCSI Initiator and it has also been tested for compatibility with various Linux and UNIX iSCSI initiators, iSCSI HBAs from Adaptec and QLogic and hardware iSCSI accelerators from Alacritech.



#1 for VMware and Hyper-V

www.starwindsoftware.com

ABOUT STARWIND

Since 2003, StarWind has been a pioneer in the iSCSI storage industry and has been the solution of choice for thousands of global customers in over 50 countries, from SMBs, to governments, and to Fortune 1000 clients.

US Headquarters
40 Mall Rd.
Burlington, MA 01803
+1-617-449-7717 Main
+1-617-507-5845 Fax

EMEA and APAC
+44 (0) 207 193-6350
+44 (0) 207 193-6727
Email:
sales@starwindsoftware.com

USA and LATAM:
+1-617-449-7717 Main
+1-617-507-5845 Fax
Email:
sales@starwindsoftware.com