

# StarWind iSCSI SAN Software: Using StarWind Tape Redirector and CA ARCserve Backup



[www.starwindsoftware.com](http://www.starwindsoftware.com)

Copyright © StarWind Software 2008-2011. All rights reserved.

## COPYRIGHT

Copyright © StarWind Software 2008-2011. All rights reserved. No part of this publication may be reproduced, stored in a retrieval system, or transmitted in any form or by any means, electronic, mechanical, photocopying, recording or otherwise, without the prior written consent of StarWind Software.

## TRADEMARKS

“StarWind”, “StarWind Software” and the StarWind and the StarWind Software logos are trademarks of StarWind Software which may be registered in some jurisdictions. All other trademarks are owned by their respective owners.

## CHANGES

The material in this document is for information only and is subject to change without notice. While reasonable efforts have been made in the preparation of this document to assure its accuracy, StarWind Software assumes no liability resulting from errors or omissions in this document, or from the use of the information contained herein. StarWind Software reserves the right to make changes in the product design without reservation and without notification to its users.

## TECHNICAL SUPPORT AND SERVICES

If you have questions about installing or using this software, check this and other documents first - you will find answers to most of your questions here or there. If you need further assistance, please contact us.

## Table of Contents

Introduction.....	4
Provisioning the Tape Auto-loader/changer Device.....	5
Connecting to a Remote Device using iSCSI Initiator.....	12
CA ARCserve Backup.....	19
Preparing the Media .....	19
Performing backup .....	26
Restoring data .....	36

## Guide

### Introduction

StarWind Tape Redirector enables tape drives to be exported over a standard IP network. This allows you to use a centralized tape drive that can be accessed by any client machine as though it had a locally attached tape drive.

This document provides basic step-by-step instructions for configuring StarWind Tape Redirector to use CA ARCserve Backup with a exported tape auto-loader/changer drive. For information about CA ARCserve Backup such as system requirements, compatibility, release notes, technical support, etc., please visit <http://arcserve.com/us/default.aspx>.

## Provisioning the Tape Auto-loader/changer Device

Launch **StarWind Console** selecting **Start** → **All Programs** → **StarWind Software** → **Management Console** → **StarWind Management Console**. After the console is launched its icon appears in the system tray. Double click the icon with the left mouse button or single click it with the right and select Start Management pop-up menu item.

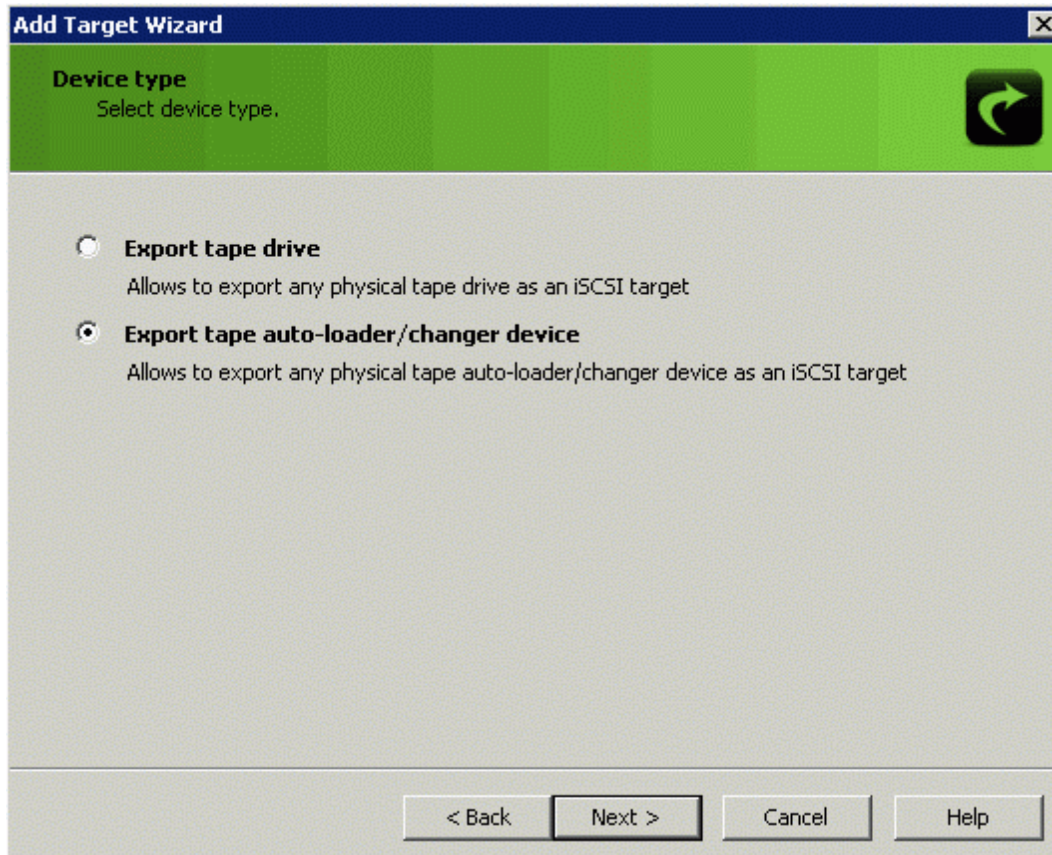
From the **StarWind Servers** tree please select the server you want to connect to. Double click with the left mouse button over the desired host or press the right mouse button over it and select the **Connect** pop-up menu item. You will be prompted to enter the login and password. Default ones are: root, starwind. You can always change them later.

Press **Add Target** button to continue.



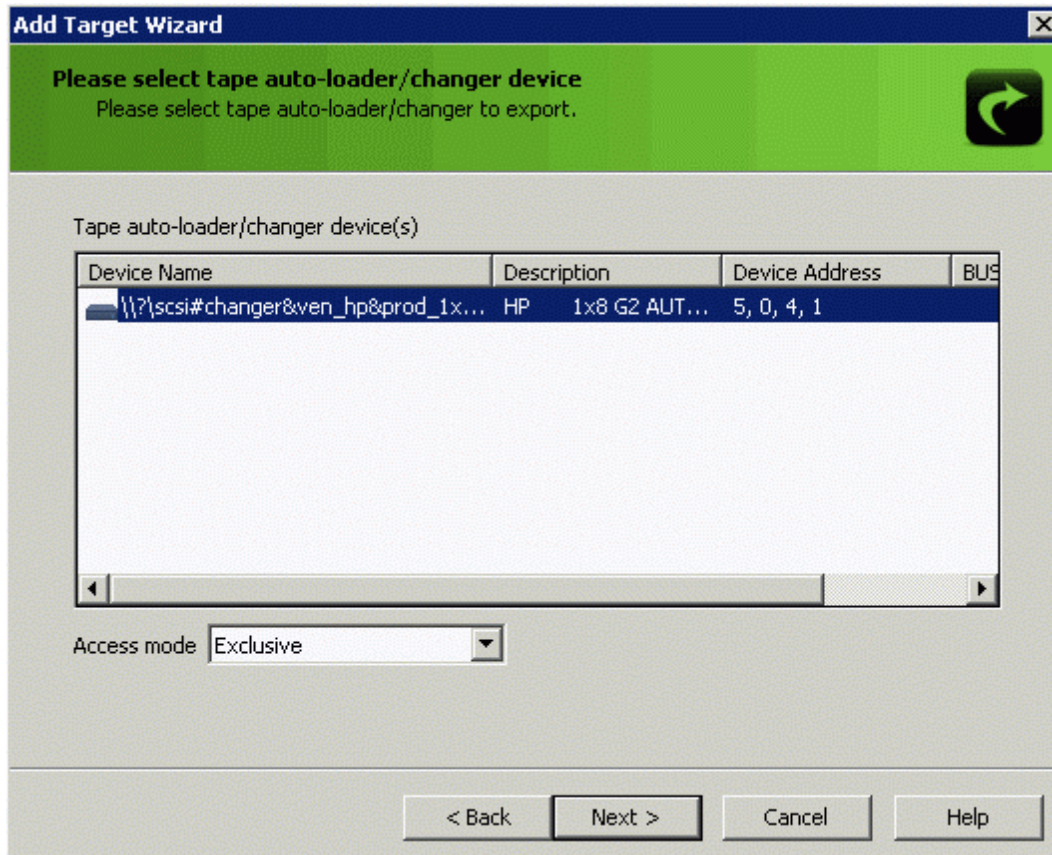
Press the **Next** button to continue.

Select **Export tape auto-loader/changer device** to export any physical tape auto-loader/changer device as an iSCSI target.



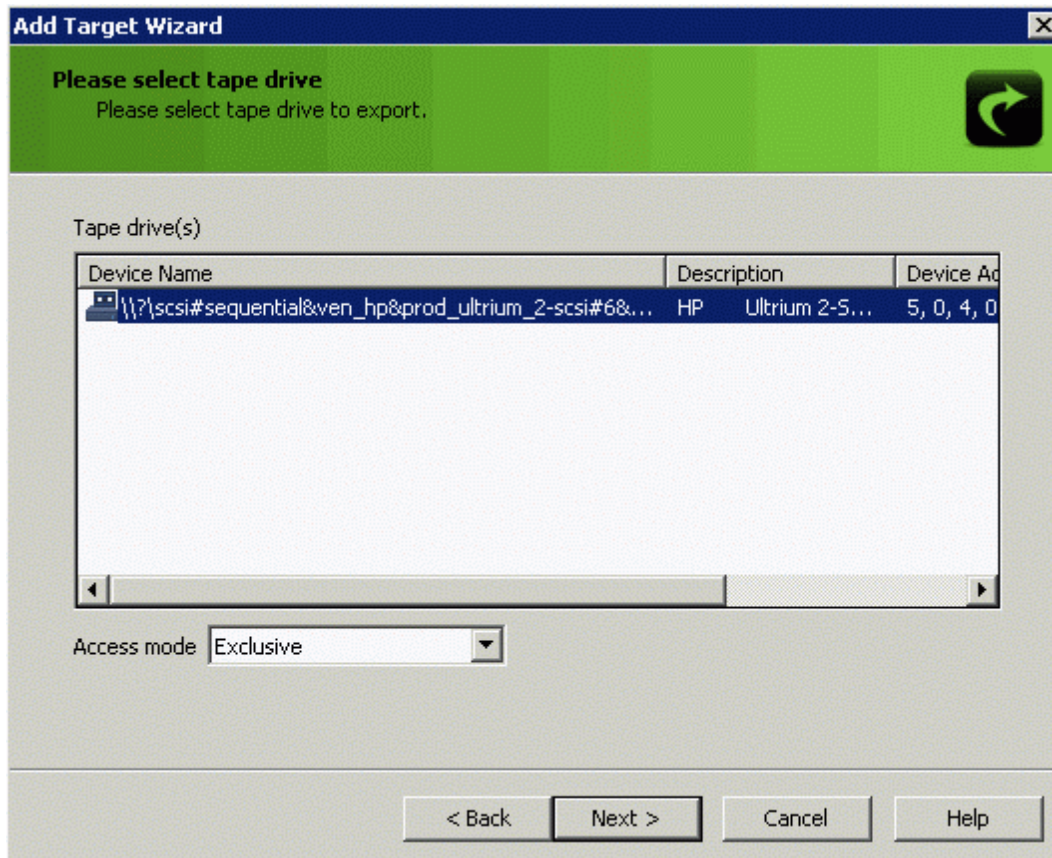
Press the **Next** button to continue.

Please select **tape auto-loader/changer device** which you want to export and select **Access mode** for it.



Press the **Next** button to continue.

Please select **tape drive** to export and select **Access mode** for it.

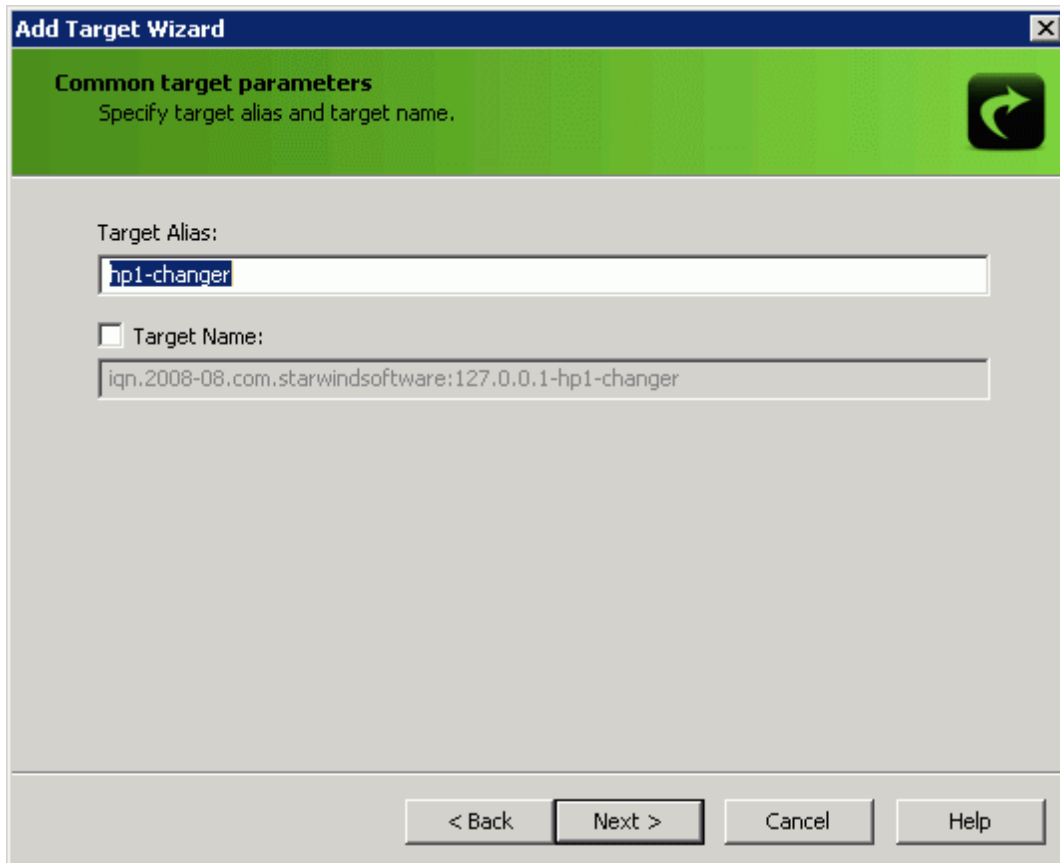


Press the **Next** button to continue.



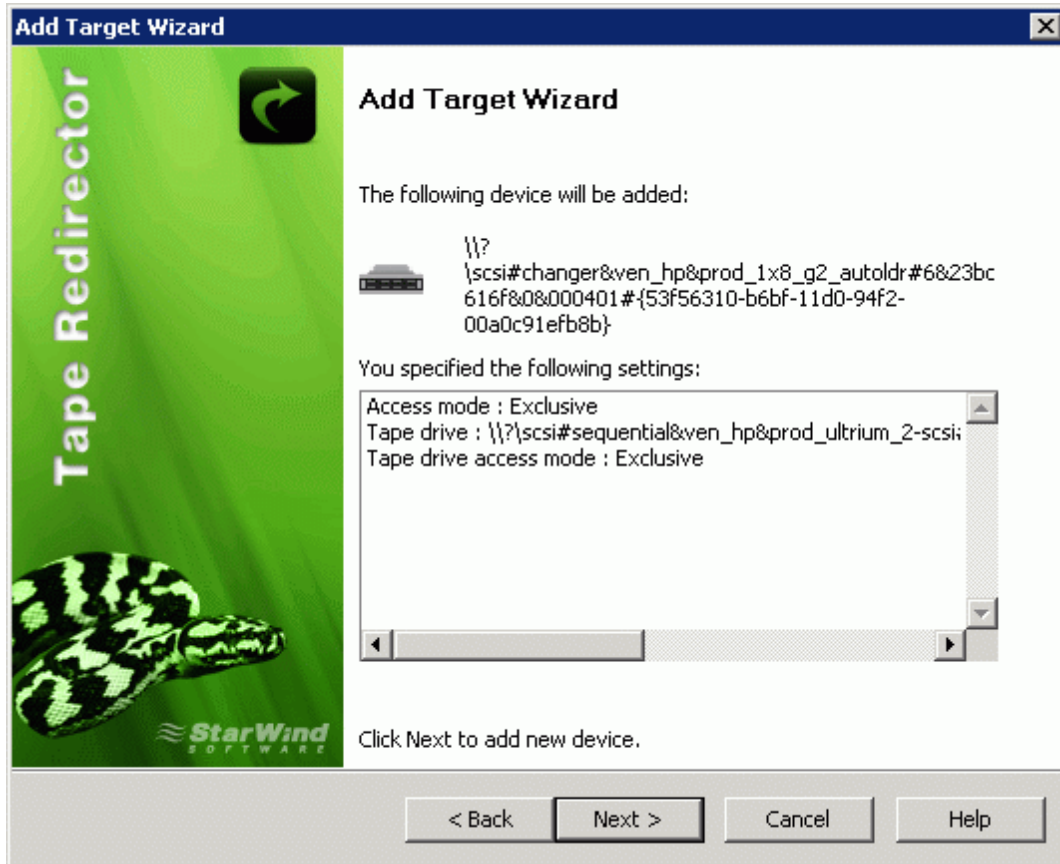
In the Wizard that appears, specify a **Target Alias**. Target name generates automatically and it must be unique by which the device will be declared to the iSCSI initiators connecting to **StarWind** over an IP network.

**Note:** target name can contain only letters from A to Z, numbers, points, dashes, “:” and can not contain spaces.



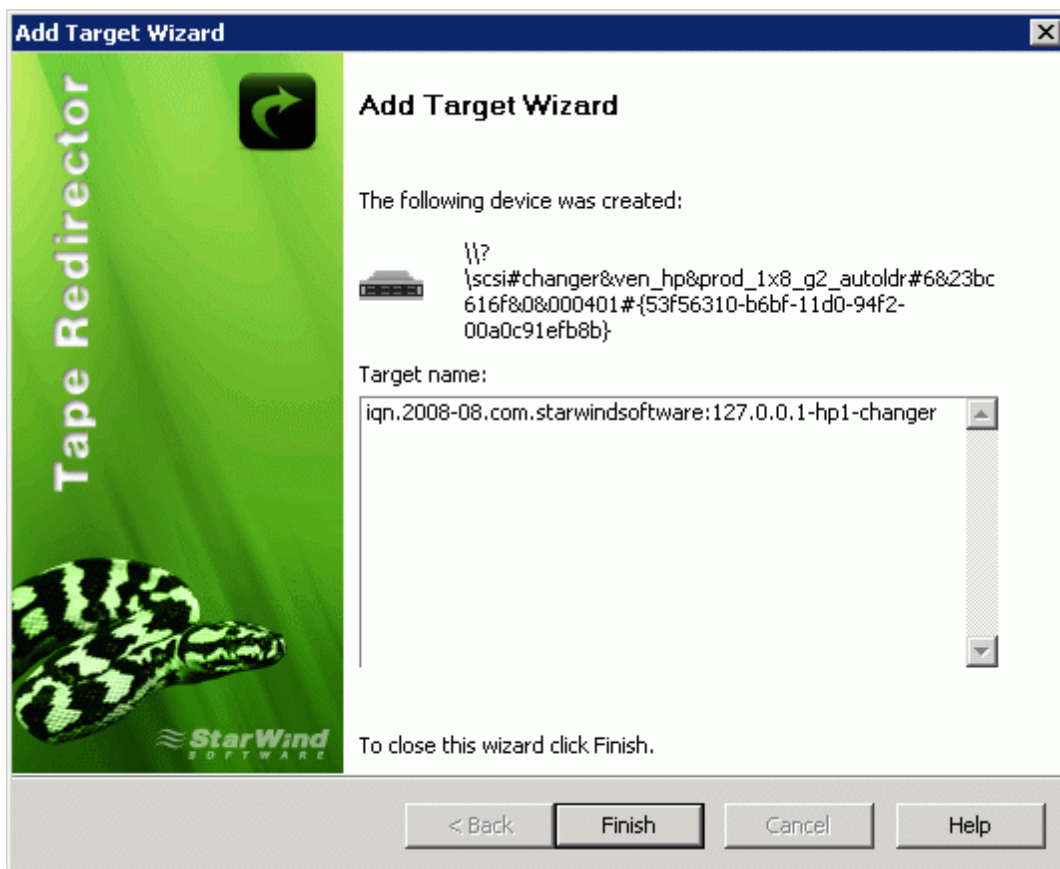
Press the **Next** button to continue.

Check the device parameters are correct. Press the **Back** button should any changes be required.



Press the **Next** button to continue.

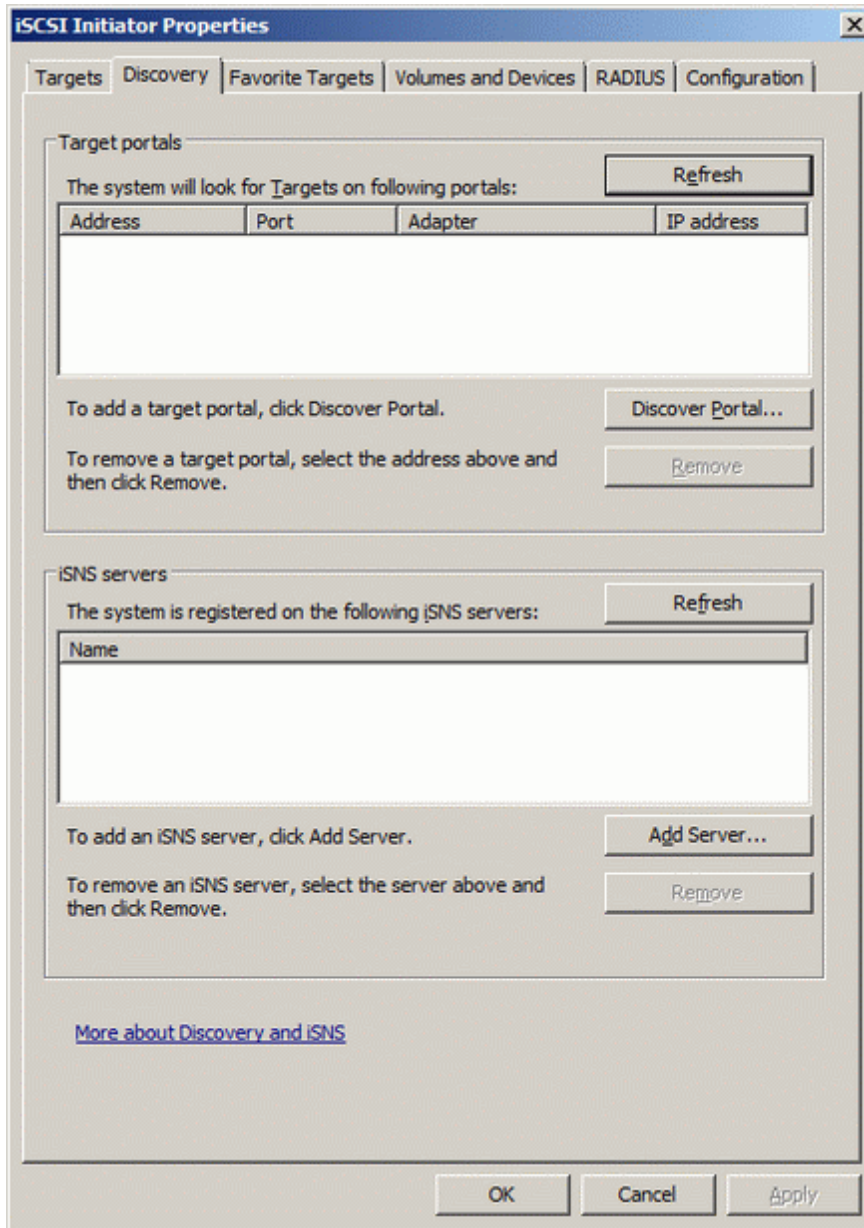
A summary of the created device is displayed on the last wizard page.



Press the **Finish** button to close the wizard.

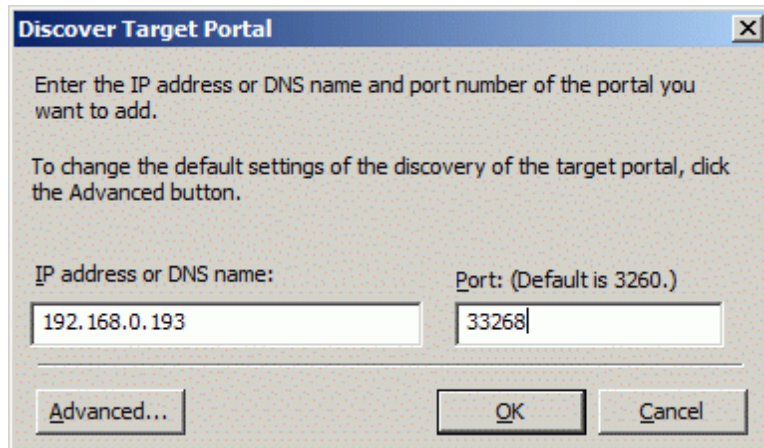
## Connecting to a Remote Device using iSCSI Initiator

Launch the **Microsoft iSCSI Software Initiator** application.  
Switch to the **Discovery** tab.



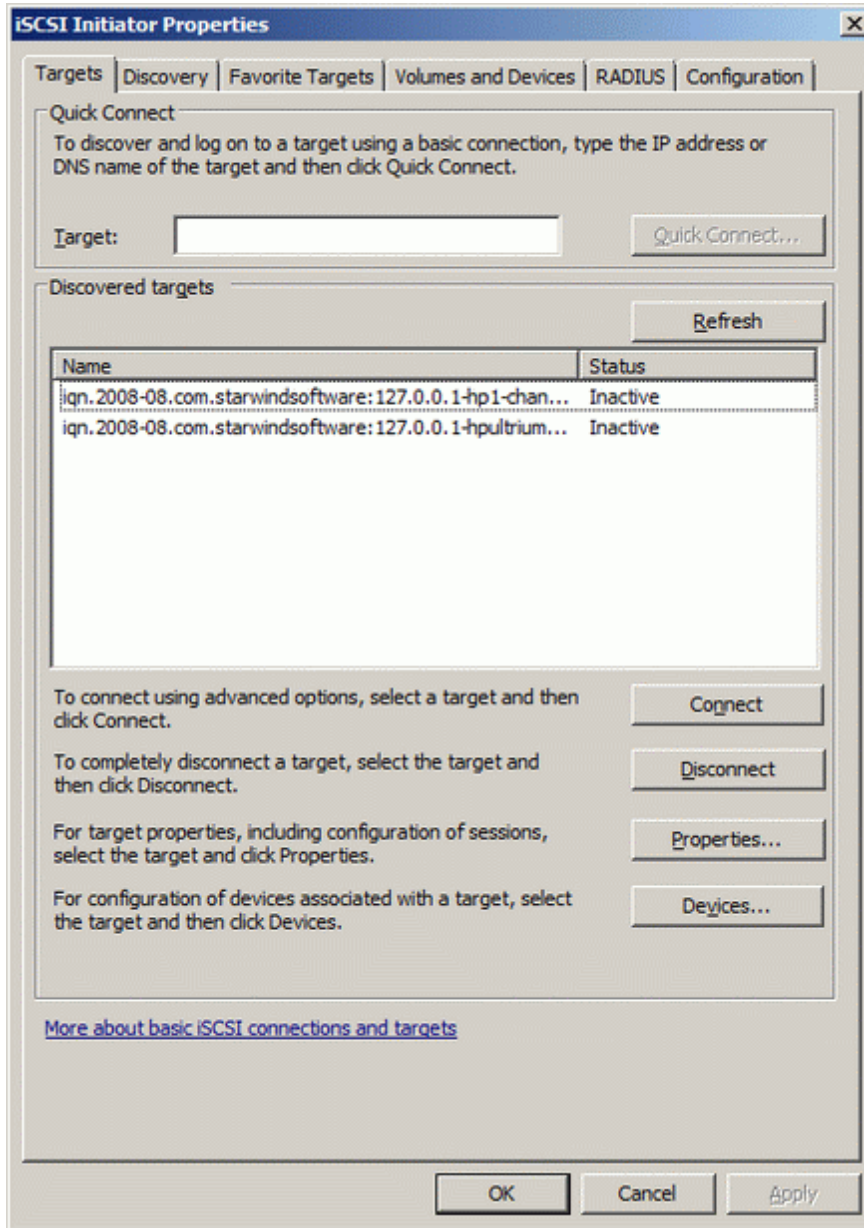
In the Target Portals group press the **Discover Portal...** button.

In the **'Add Target Portal'** dialog, type in the appropriate fields IP address or DNS name of the host and port number (default : 33268) of the StarWind Type Redirector.



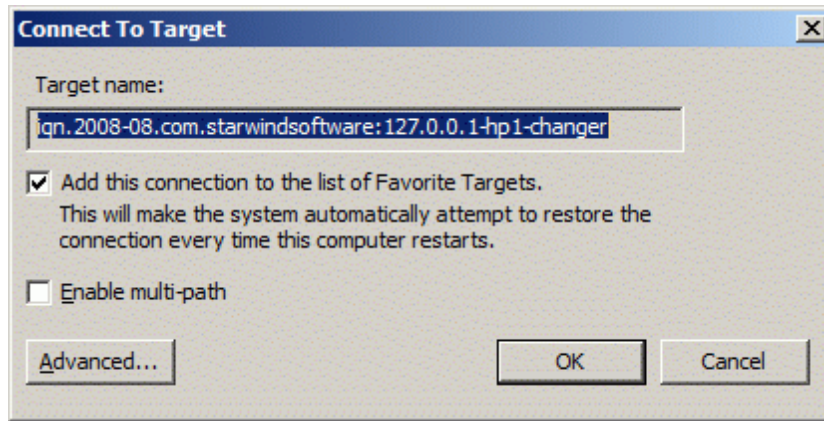
Press the **OK** button.

Switch to the **Targets** tab. Select the target **name** from the list (if no targets are listed, press the **Refresh** button).



Press the **Connect** button.

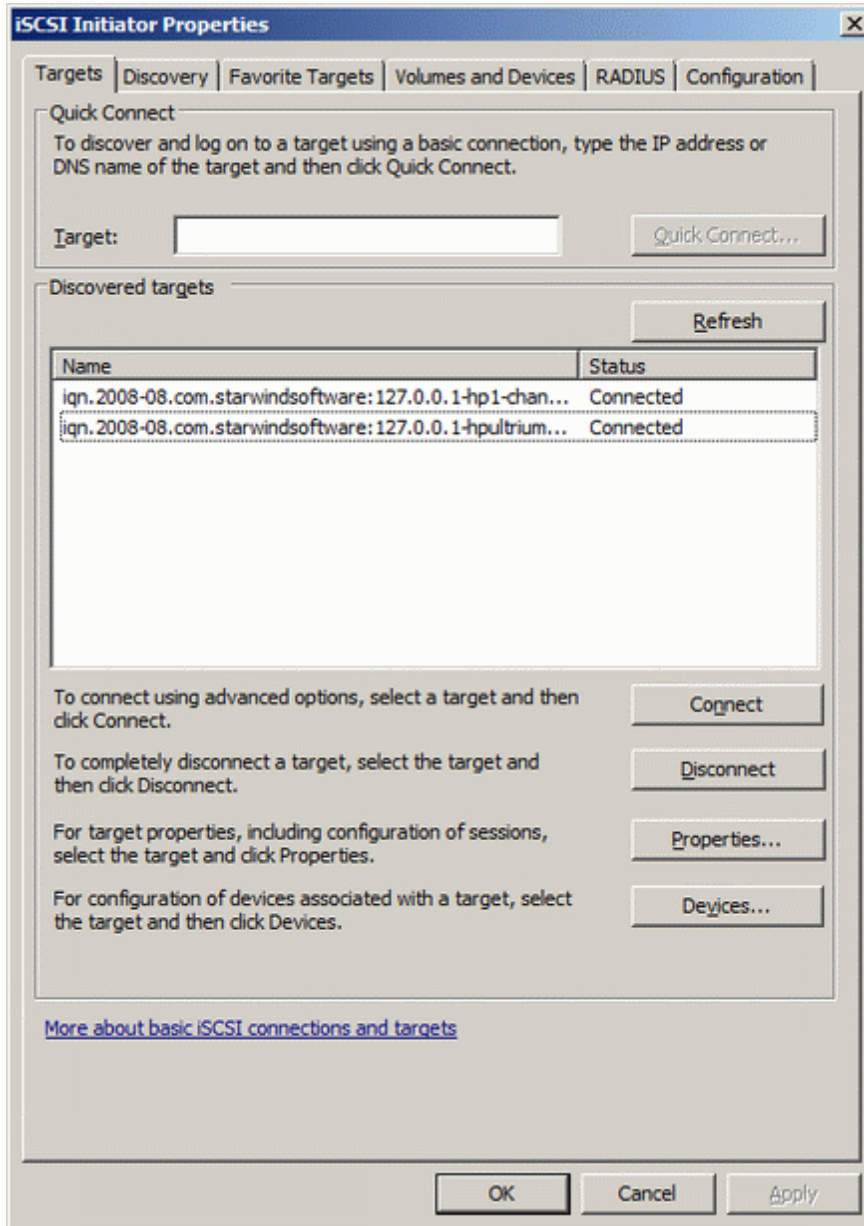
The **Connect to Target** dialog window appears. You may **deselect** option "Add this connection to the list of Favorite Targets" if you don't want the system automatically attempt to restore the connection every time computer starts.



Press the **OK** button.

iSCSI device will appear as "**Connected**" if connection was successful. It may take few seconds.

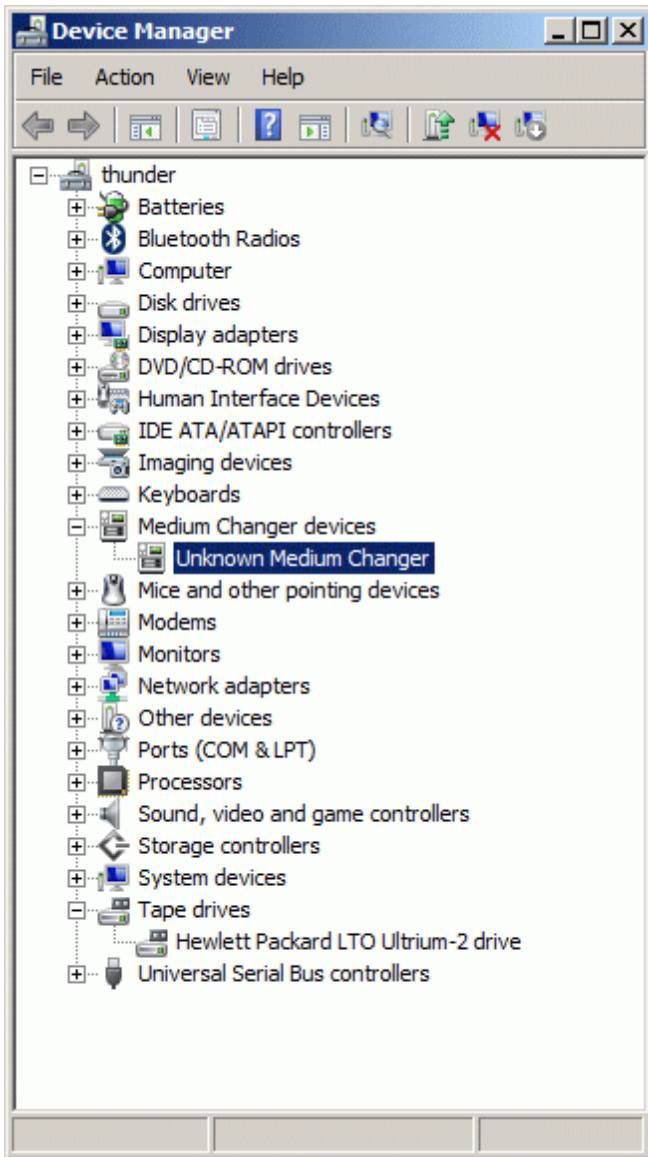
You should connect **both** devices.

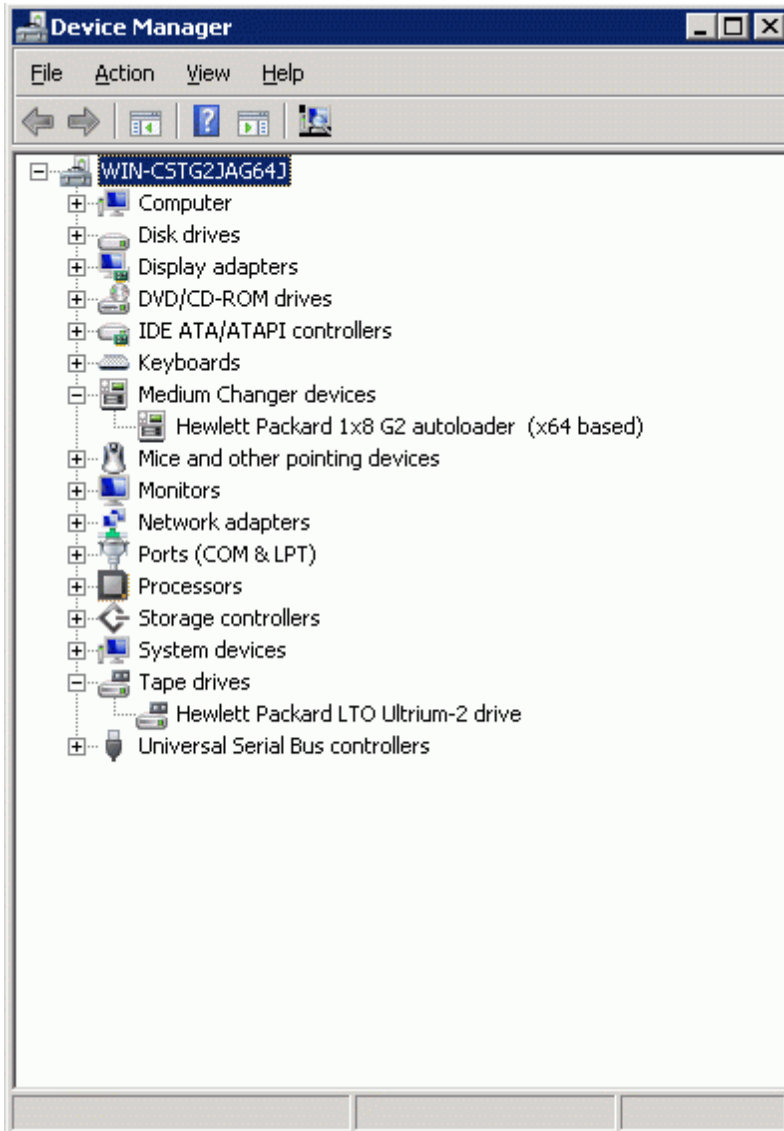




After these steps the **Tape** and **Medium Changer** devices will appear as local devices.

You should **install drivers** for **Unknown Medium Changer** device to see it properly in Device Manager.



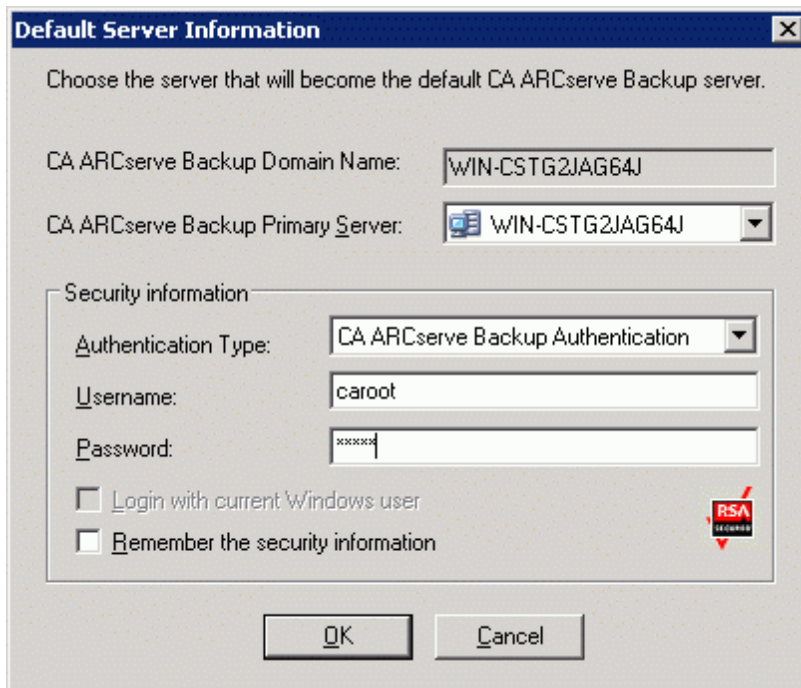


## CA ARCserve Backup

### Preparing the Media

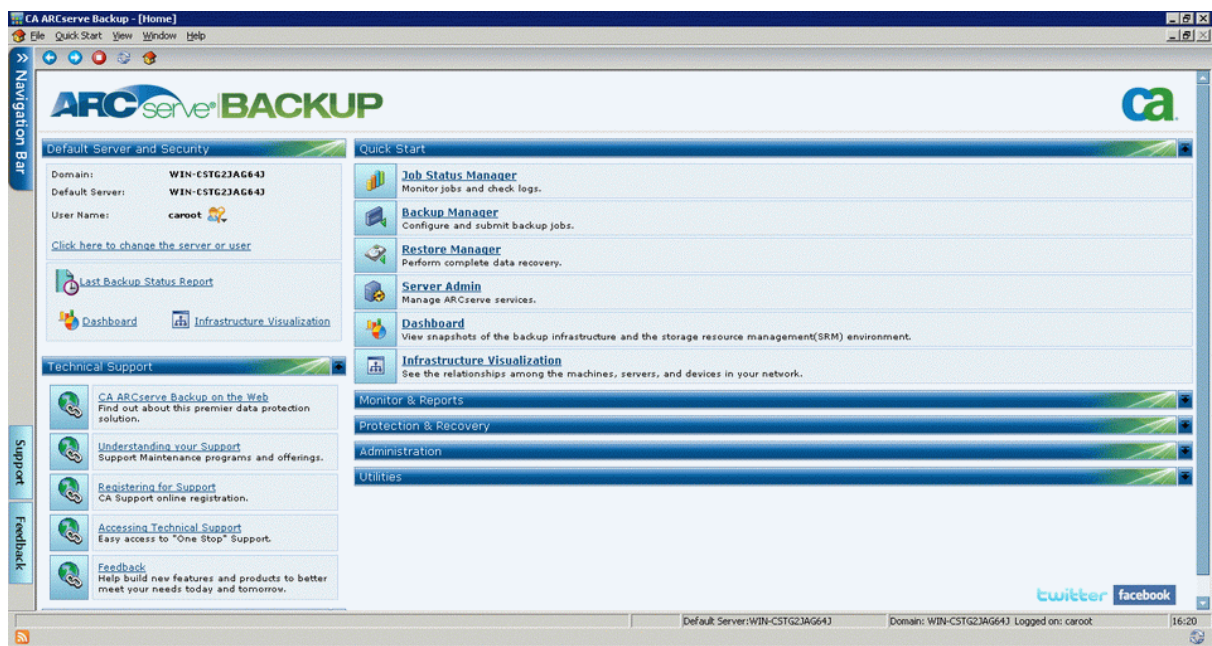
Launch the **CA ARCserve backup Manager**.

Choose **CA ARCserve backup Primary Server** and **Authentication Type**. If you will use **CA ARCserve Backup Authentication** you have to submit **Username** and **Password** (default **Username** is **caroot** and you should to specify a password while installing **CA ARCserve**).

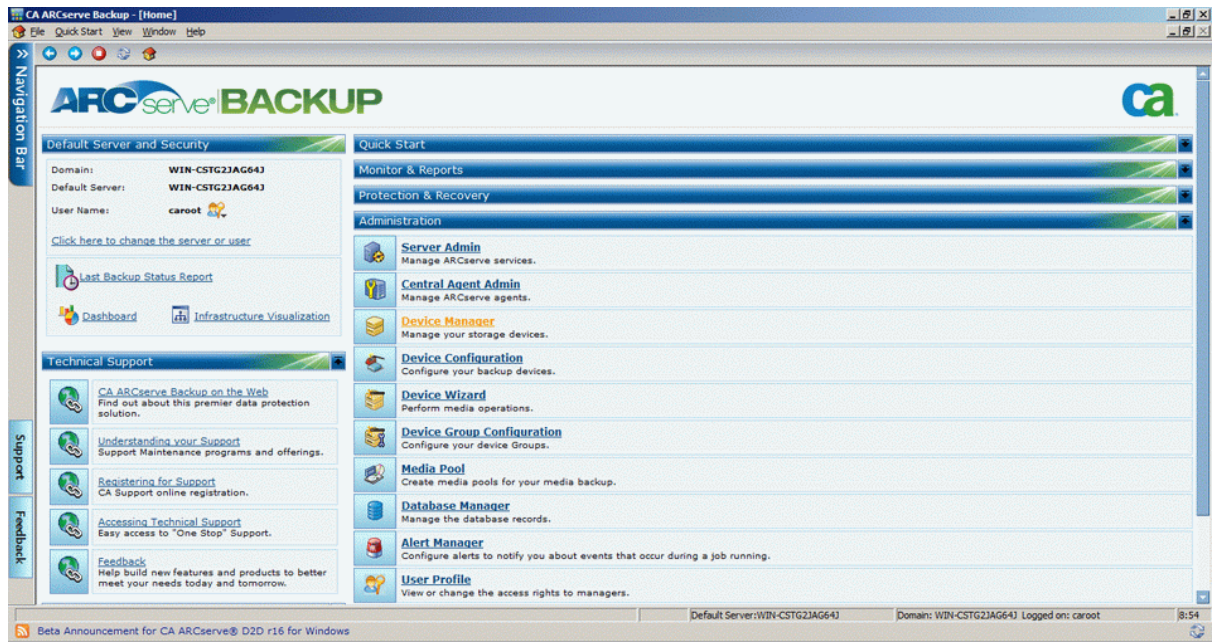


Click the **OK** button to continue.

The **CA ARCserve backup Manager** will appear.

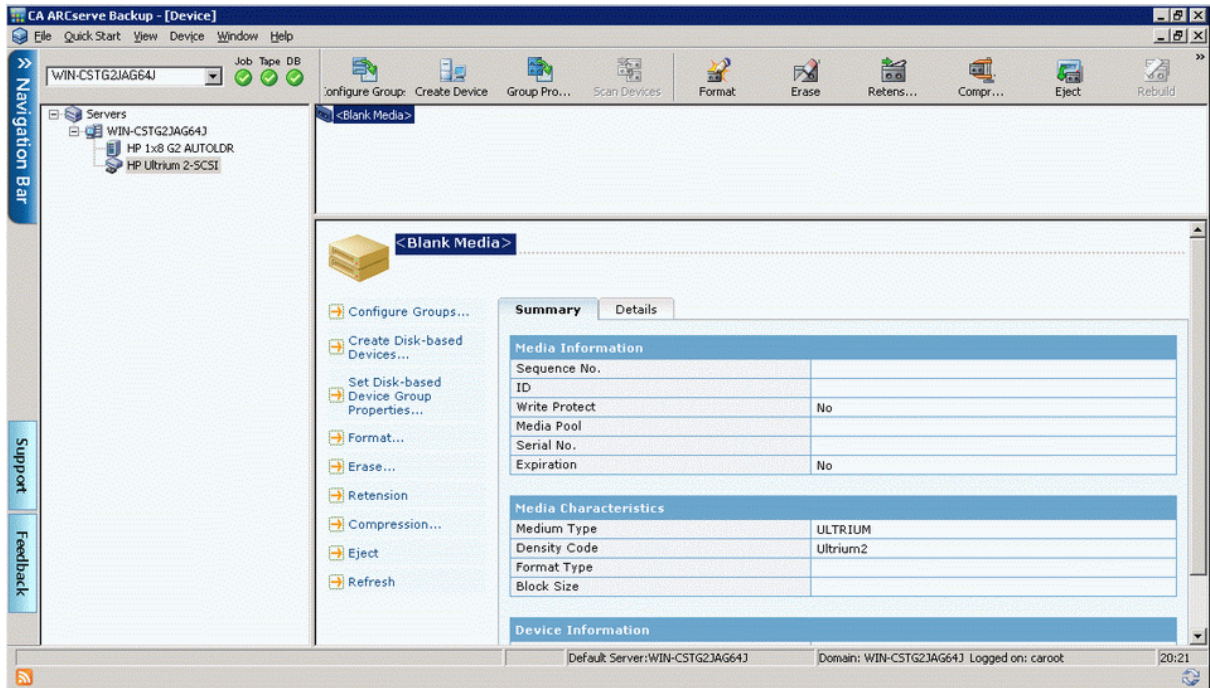


Click on the **Administration** tab.

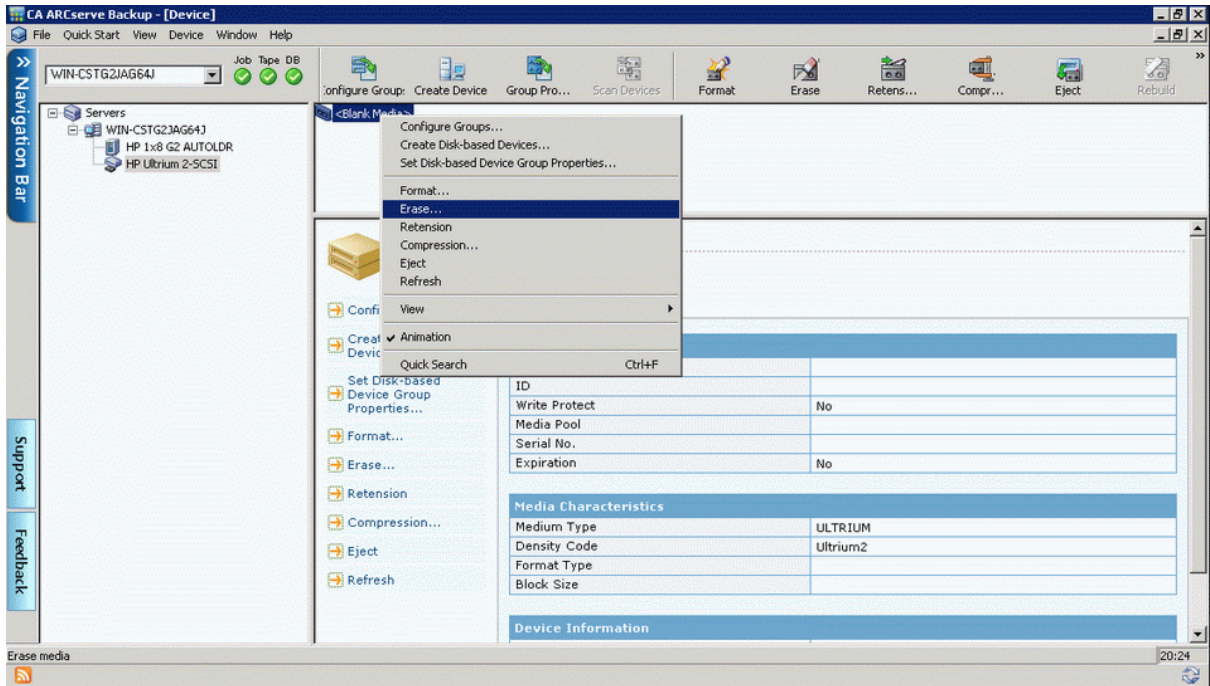


Click on **Device Manager**.

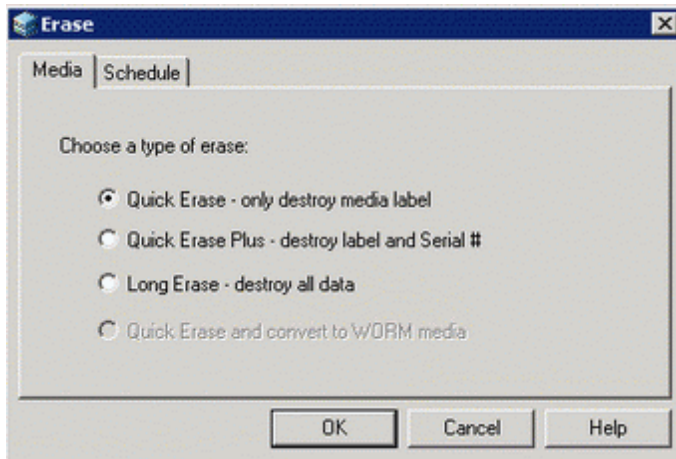
Choose device you need from the list.



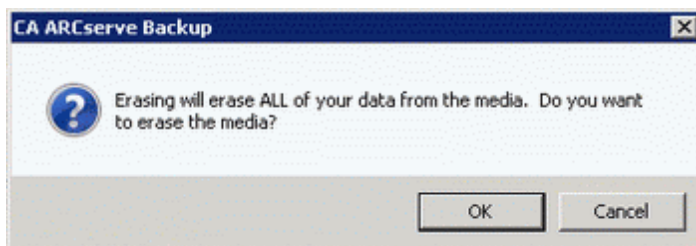
Right click on your device and select **Erase** pop-up menu item or click the **Erase** button on a menu panel and follow the instructions.



Choose a **type** of erase:



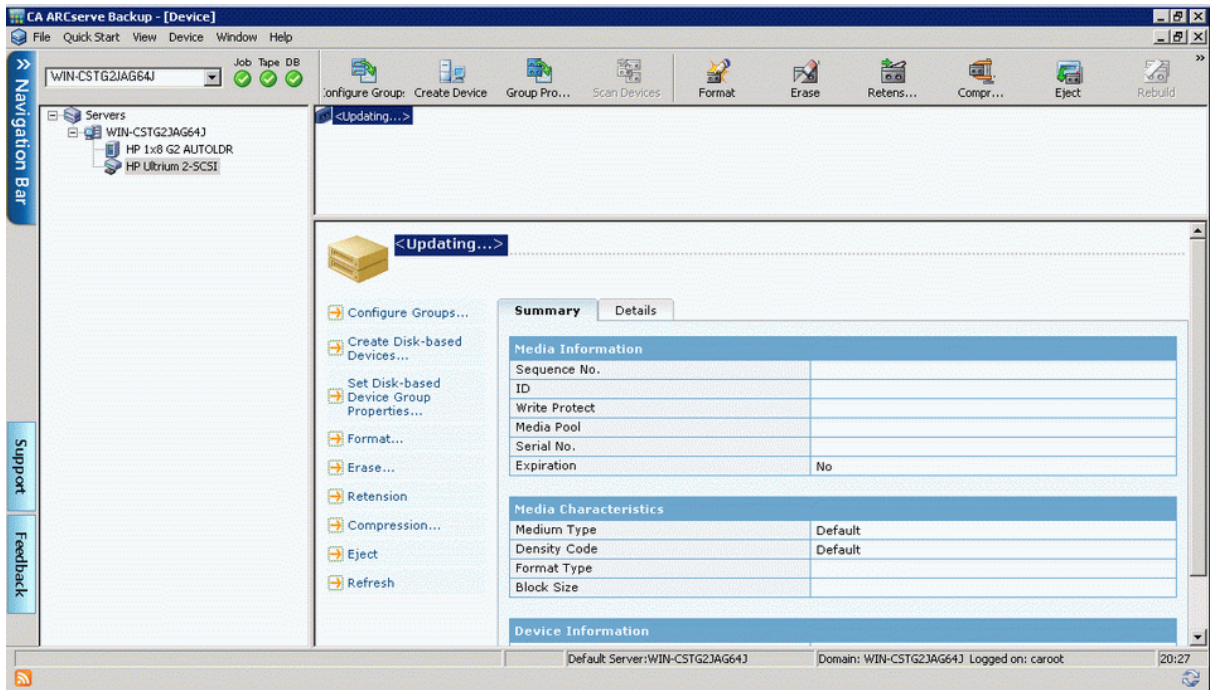
Press the **OK** button to continue.



Press the **OK** button to continue.



Wait while your device is updating.



Press the **OK** button.

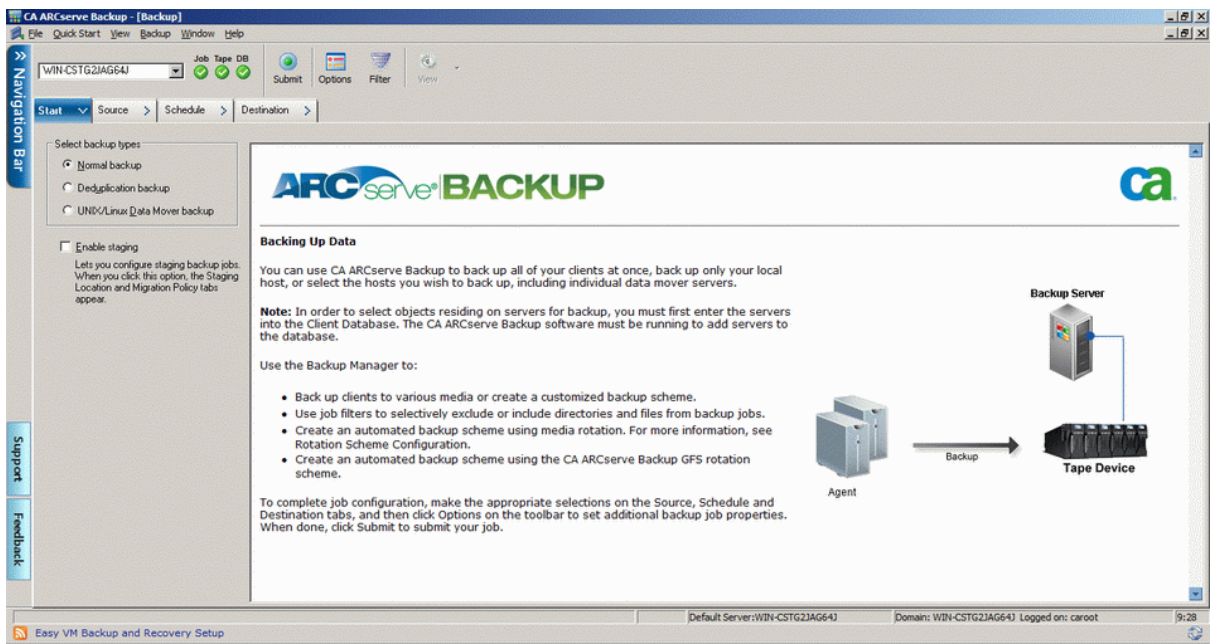
## Performing backup

Open the **CA ARCserve backup Manager**.



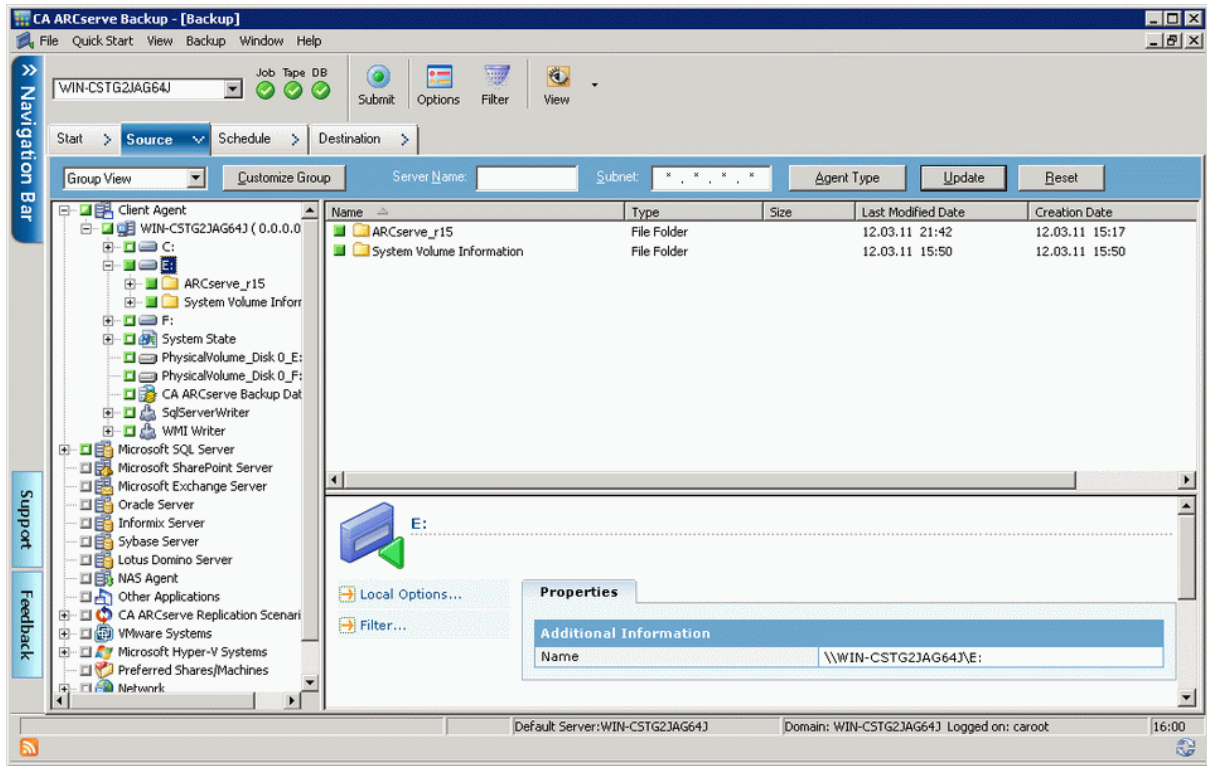
Click on **Backup Manager**.

Select **backup type** you need.



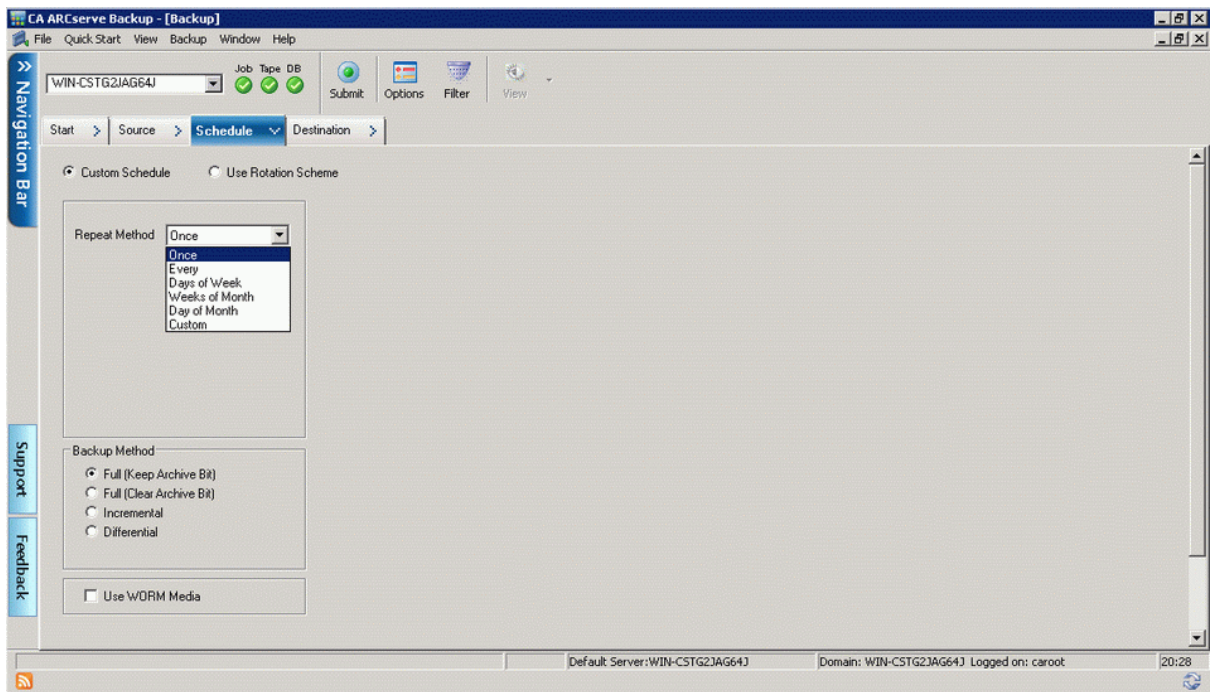
Click on the **Source** tab to continue.

Select the **data** to be backed up.



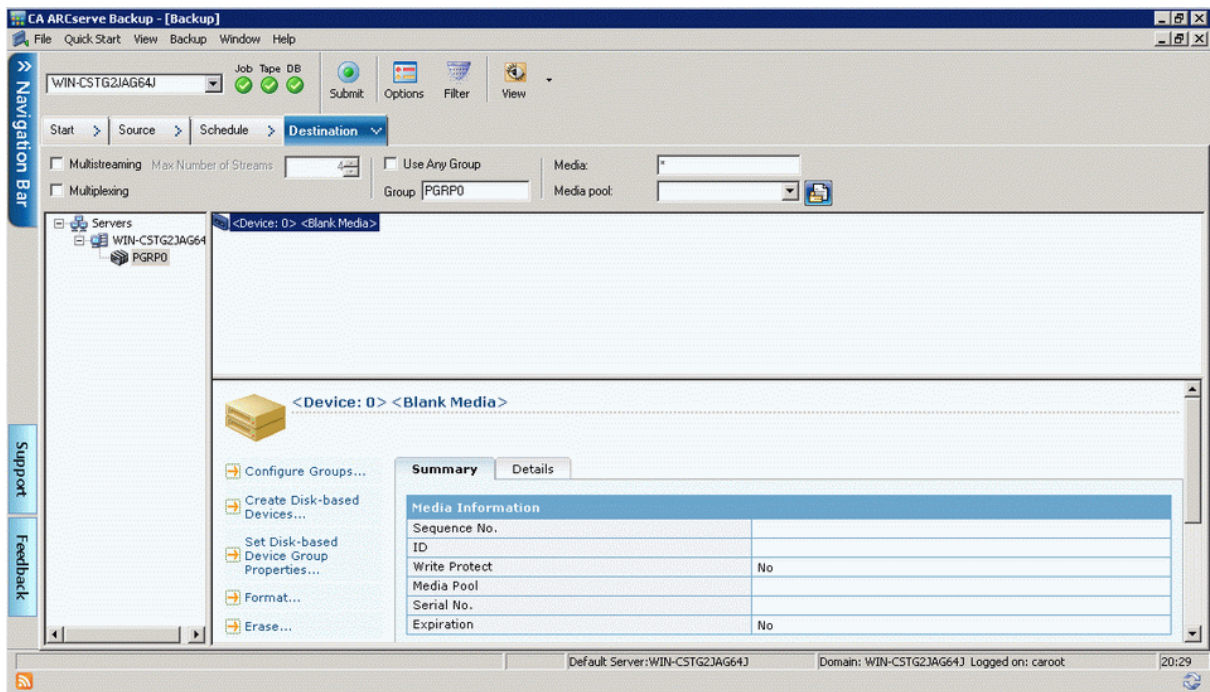
Click on the **Schedule** tab to continue.

Specify the **type of a schedule**.



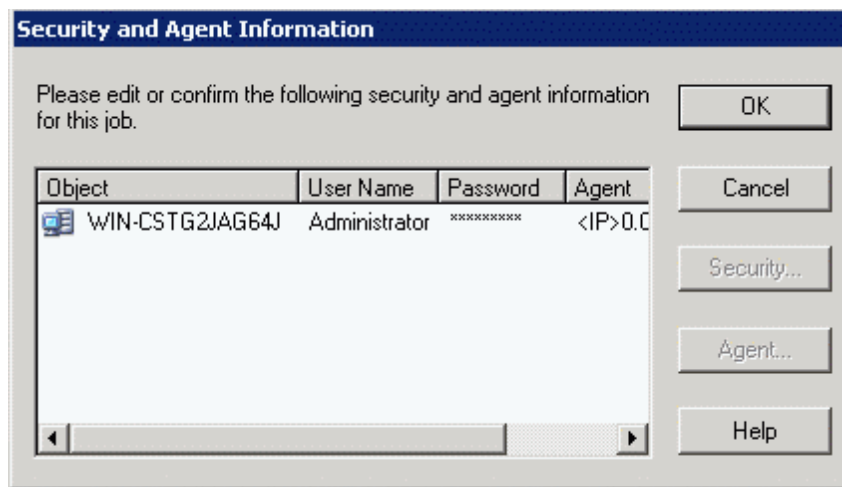
Click on the **Destination** tab to continue.

Select **device** you want to use for backup.



Click on the **Submit** button on a menu panel for Run/Schedule.

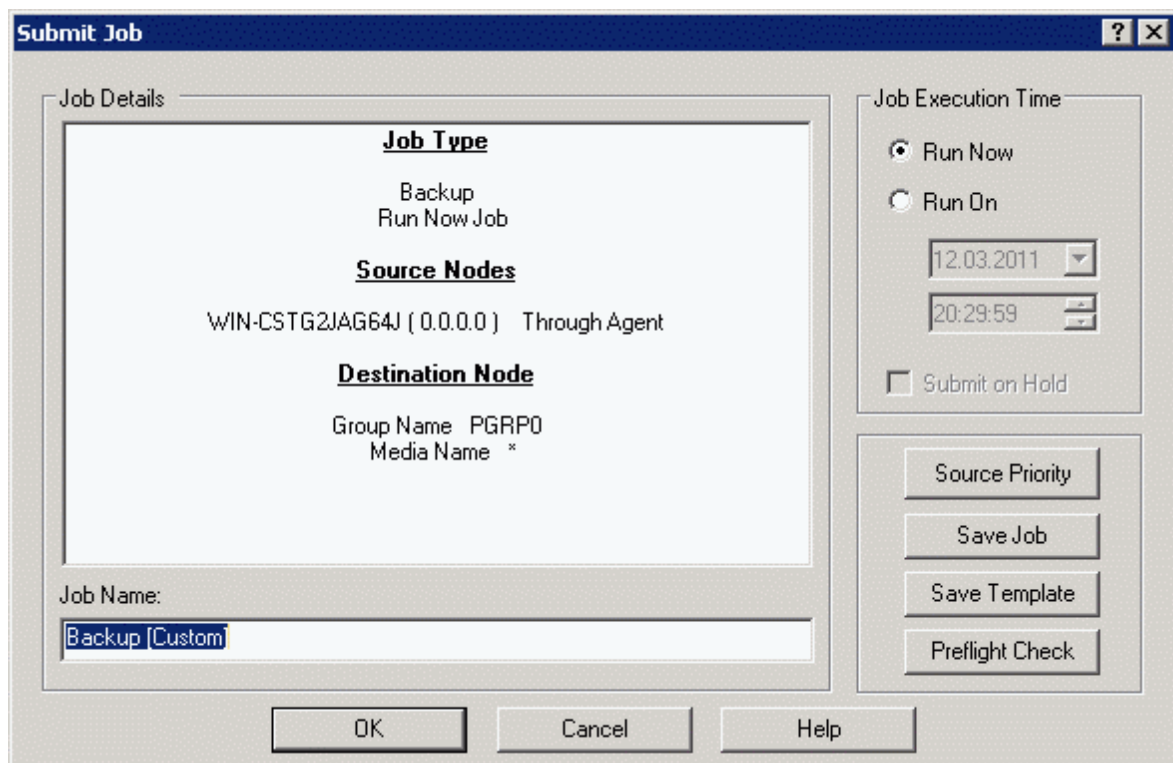
You could edit or confirm **Security and Agent Information**.



Press the **OK** button to continue.

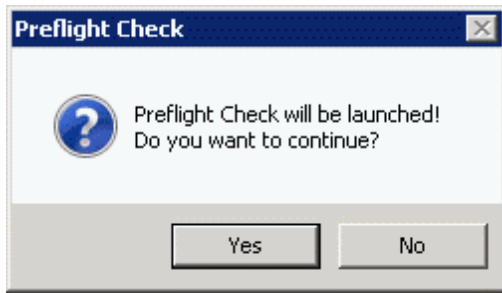
Specify a **meaningful name** for the job.  
You could select **whether to run the job** now or schedule it for later.  
Also you can:

- choose **Source Priority**
- **Save** current **Job**;
- **Save Template** of the current job ;
- launch **Preflight Check**;

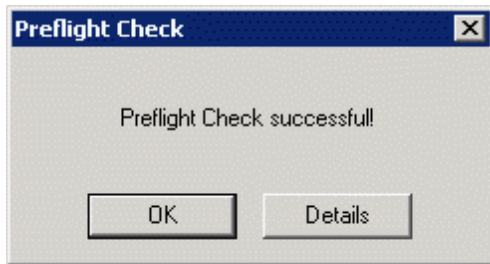


Press the **Preflight Check** button to launch the Job Check or **OK** to continue without checking.



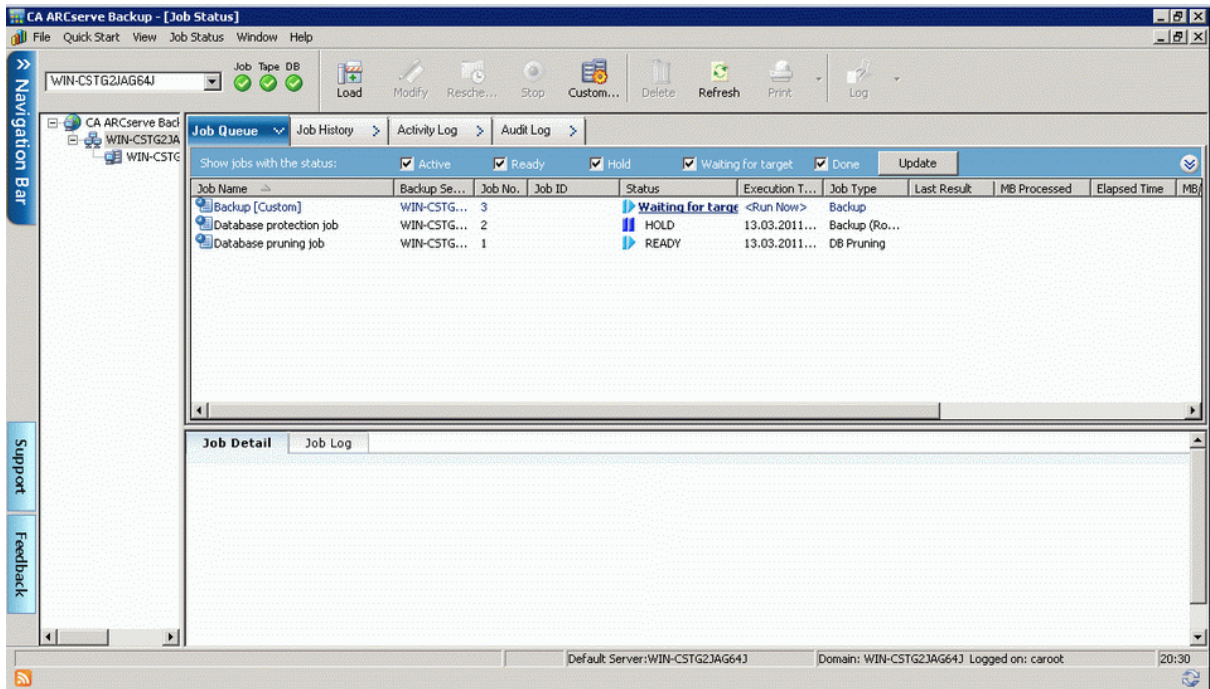


Press the **Yes** button to continue.



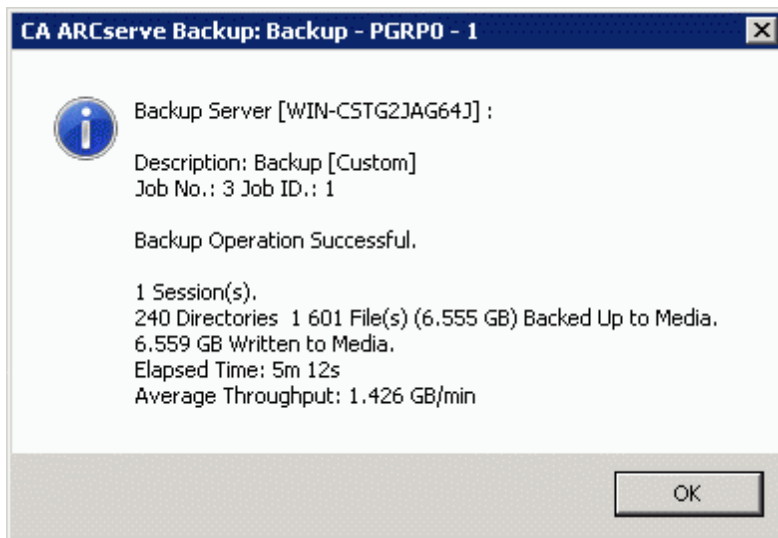
Press the **OK** button to continue.

You can see all the backup process.



Wait while it finish making backup.

The information dialog appears.



Press the **OK** button to finish.

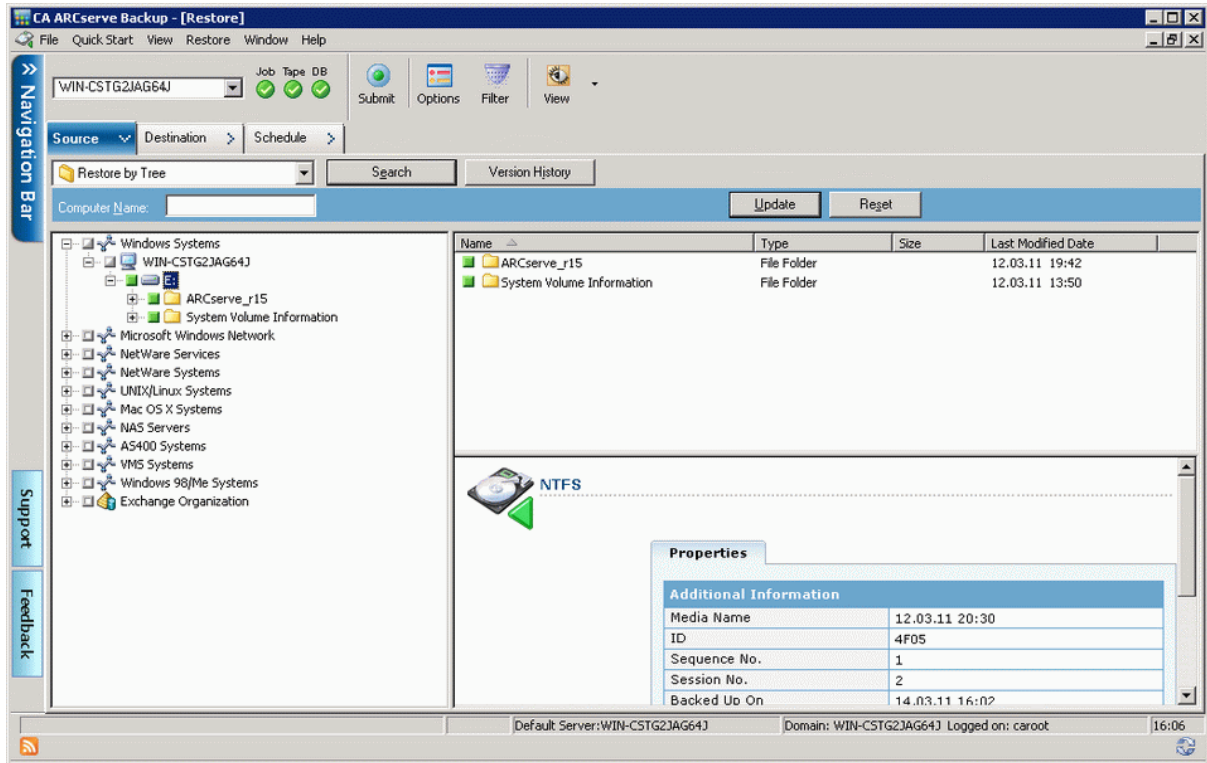
## Restoring data

Open the **CA ARCserve backup Manager**.



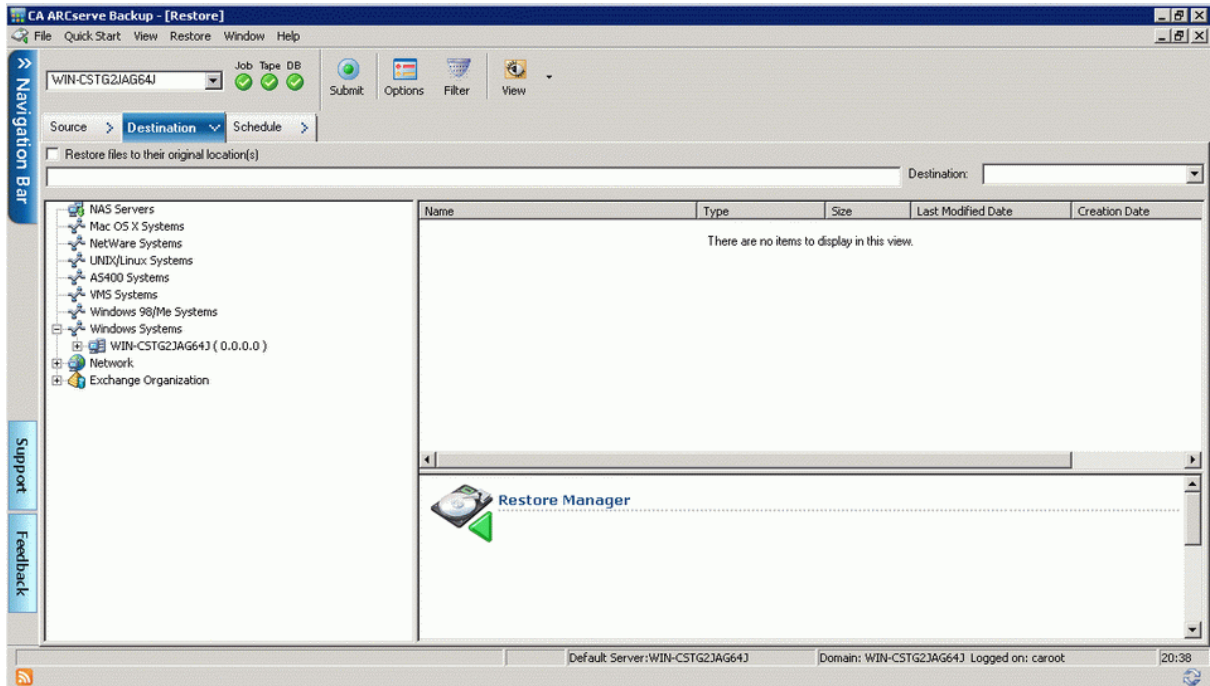
Click on **Restore Manager** to continue.

Restore window will appear.  
Select the **sources** to be restored.



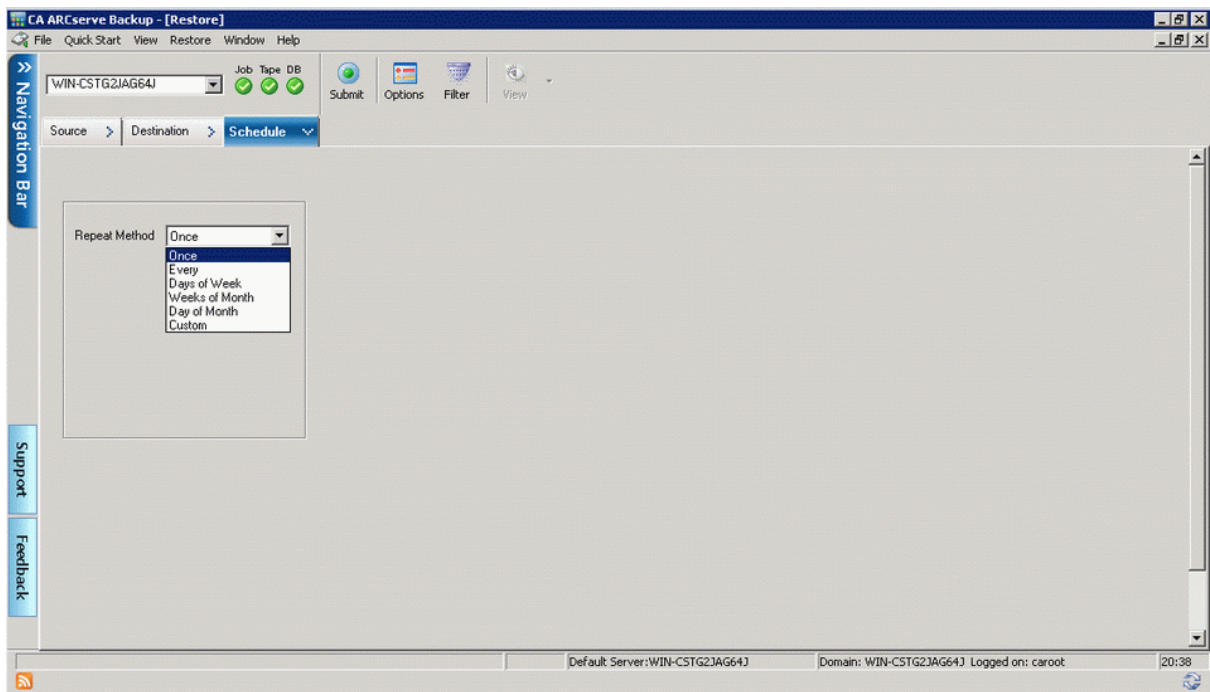
Press the **Destination** tab to continue.

On this tab you could choose a **location** for restore files.  
Check the **checkbox** if you want to **Restore files to their original destination**.



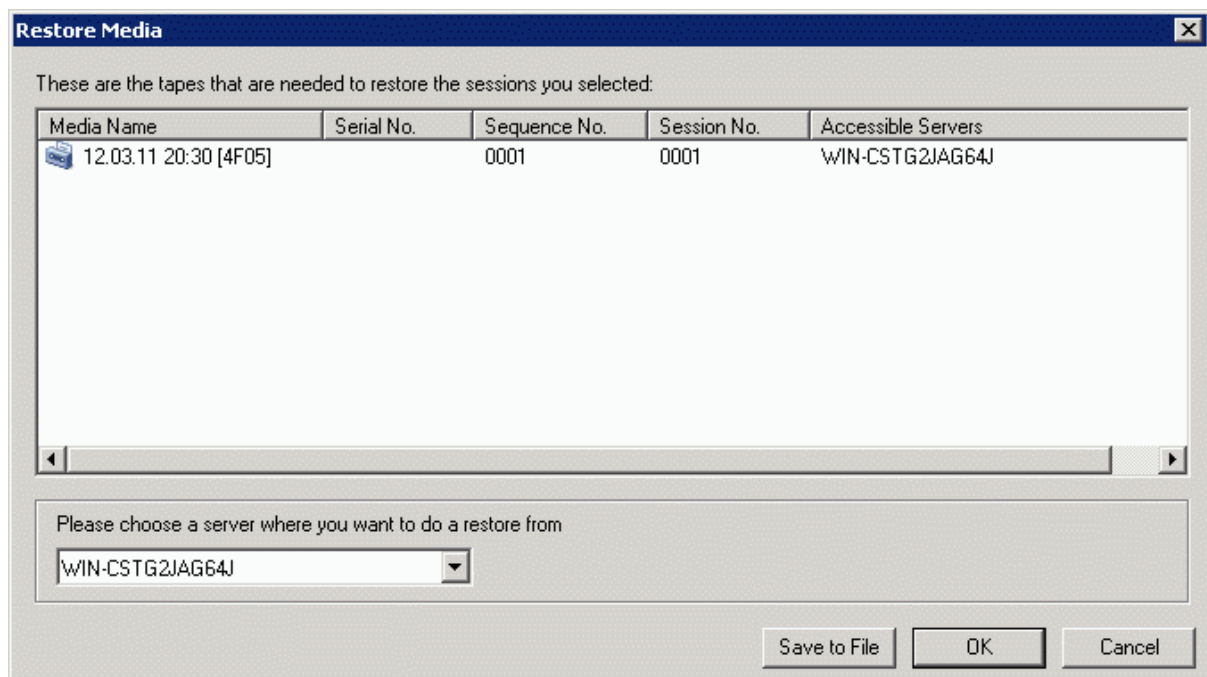
Press the **Schedule** tab to continue.

Specify the type of a schedule.



Click on the **Submit** button on a menu panel for Run/Schedule.

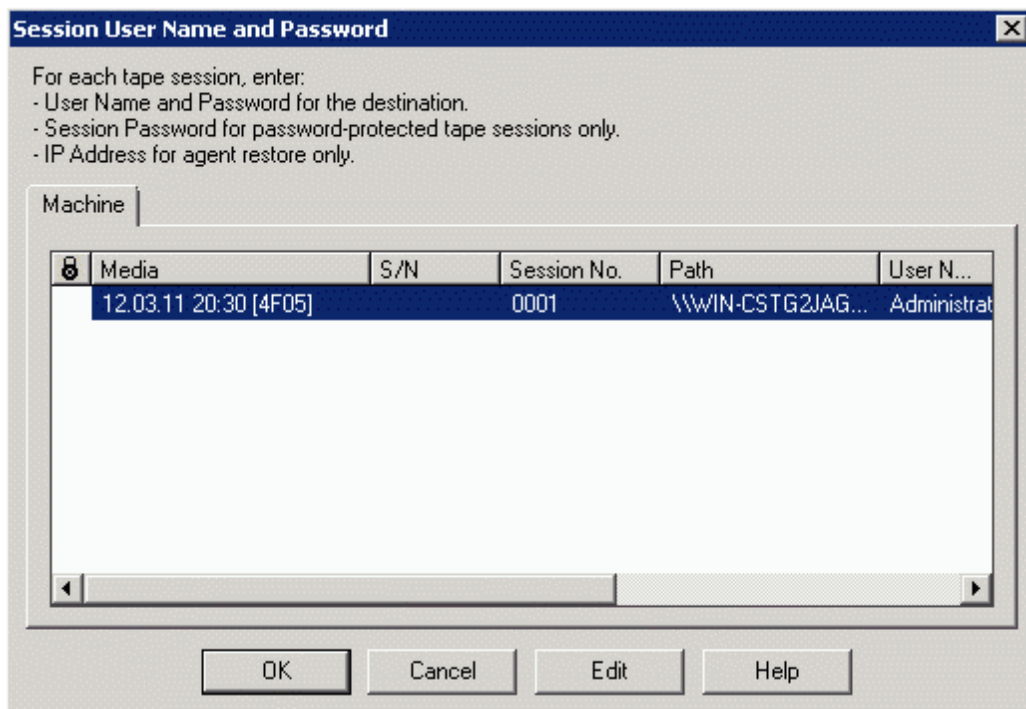
Choose a server where you want to do a restore from.



Press the **OK** button to continue.

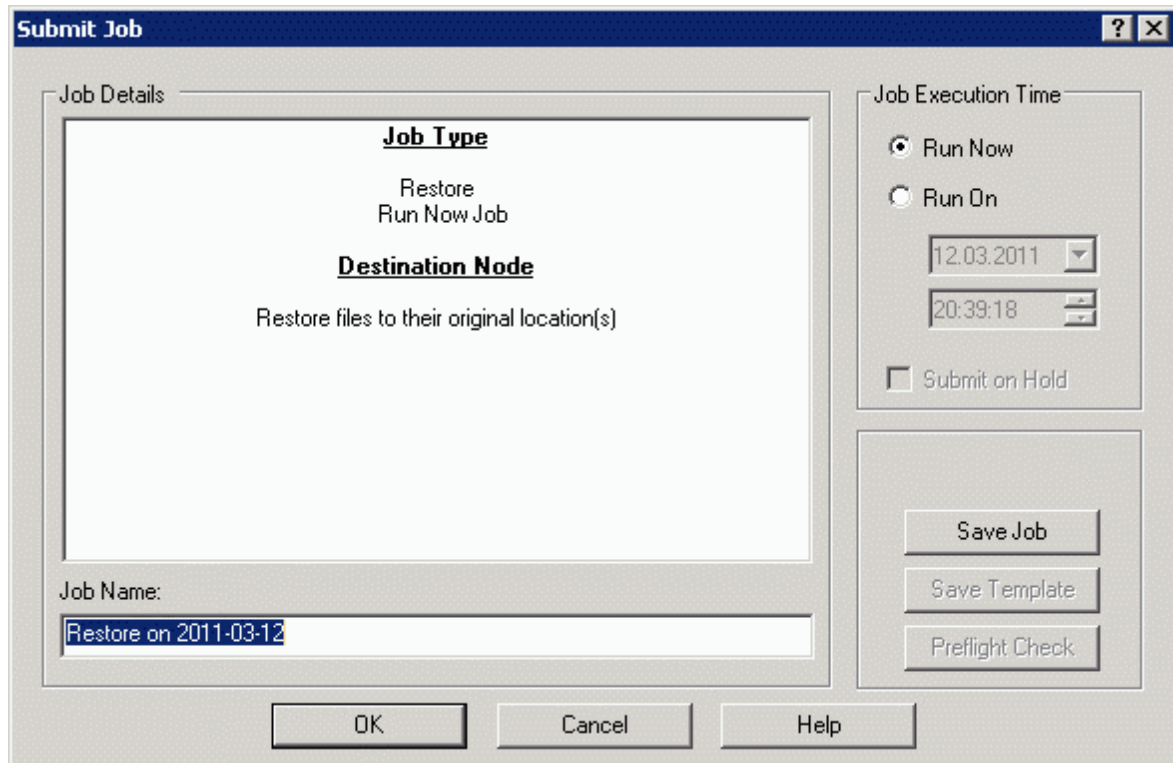


Select Media and press **Edit** for enter **Session User Name and Password**.



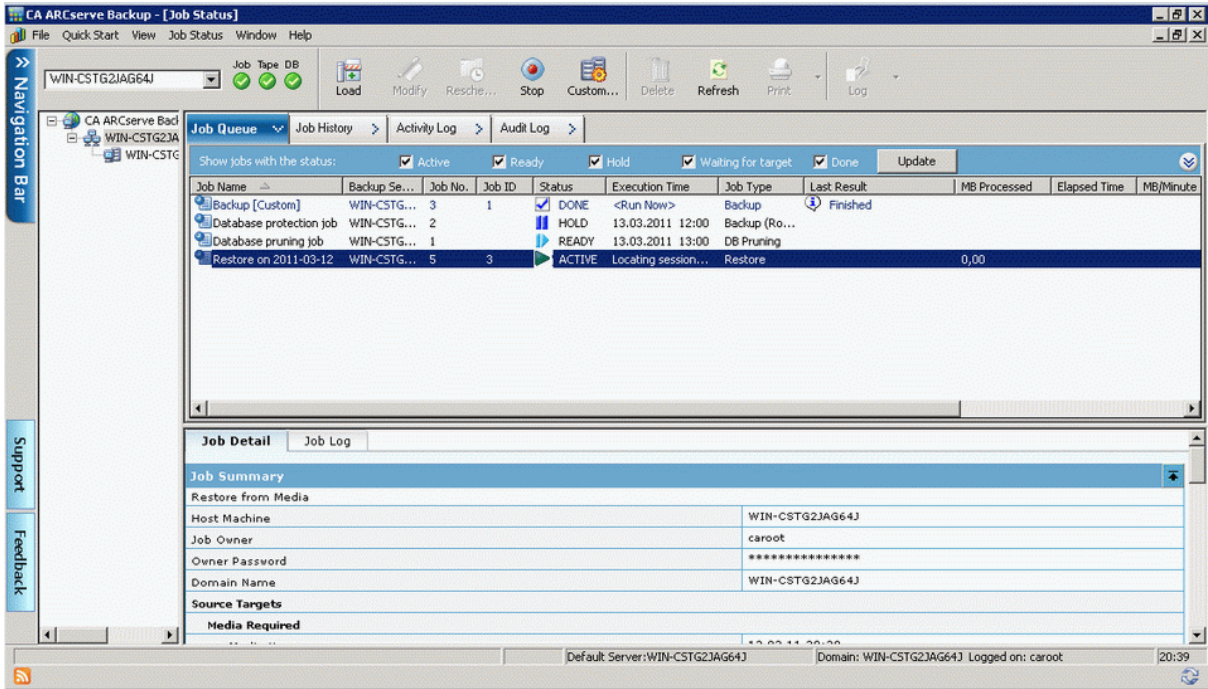
Press the **OK** button to continue.

Specify a meaningful name for the job.  
You could select whether to run the job now or schedule it for later.

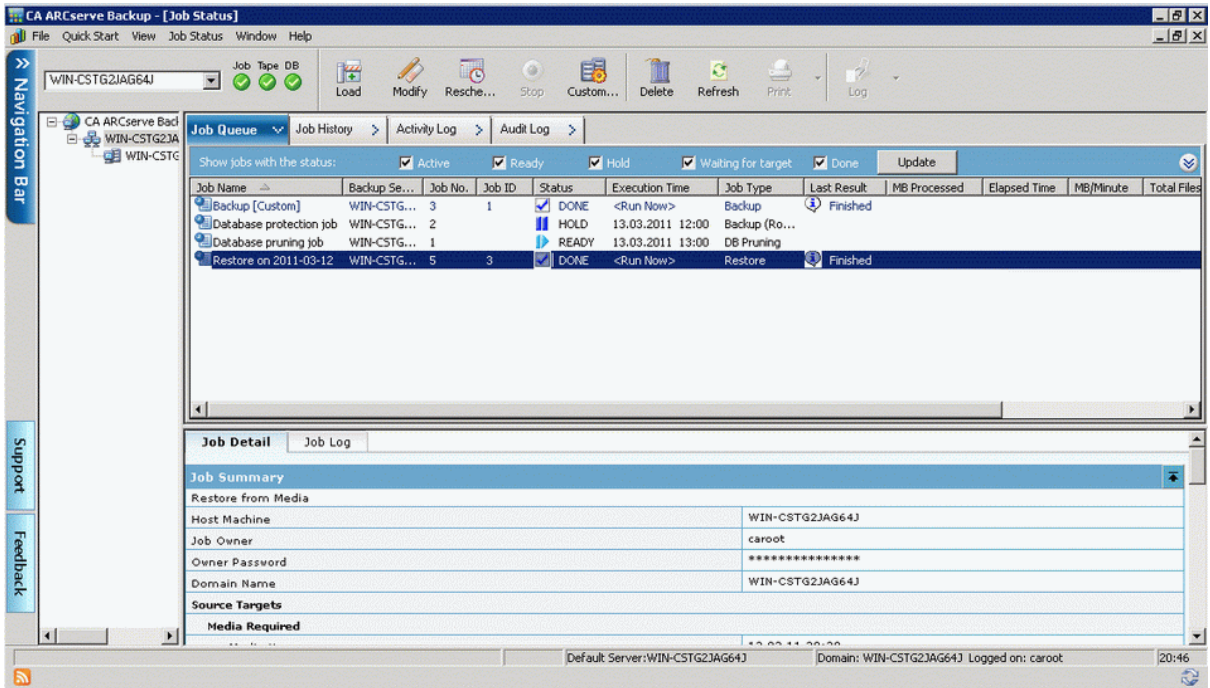


Press the **OK** button to continue.

You can see all the restore process.



Wait while it finish making restore.



Restore process is finished.

## Contacts

Support: [www.starwindsoftware.com/support](http://www.starwindsoftware.com/support)

Support Forum: [www.starwindsoftware.com/forums](http://www.starwindsoftware.com/forums)

Sales E-mail: [sales@starwindsoftware.com](mailto:sales@starwindsoftware.com)

US Headquarters

Phone: 617-449-7717

Fax: 617-505-5845

EMEA: 1-888-532-2203

**StarWind Software Inc.**

40 Mall Rd., Burlington

MA 01803, USA

[www.starwindsoftware.com](http://www.starwindsoftware.com)