

StarWind Native SAN for Hyper-V: Getting Started

www.starwindsoftware.com

Copyright © StarWind Software 2008-2011. All rights reserved.

COPYRIGHT

Copyright © StarWind Software 2008-2011. All rights reserved. No part of this publication may be reproduced, stored in a retrieval system, or transmitted in any form or by any means, electronic, mechanical, photocopying, recording or otherwise, without the prior written consent of StarWind Software.

TRADEMARKS

“StarWind”, “StarWind Software” and the StarWind and the StarWind Software logos are trademarks of StarWind Software which may be registered in some jurisdictions. All other trademarks are owned by their respective owners.

CHANGES

The material in this document is for information only and is subject to change without notice. While reasonable efforts have been made in the preparation of this document to assure its accuracy, StarWind Software assumes no liability resulting from errors or omissions in this document, or from the use of the information contained herein. StarWind Software reserves the right to make changes in the product design without reservation and without notification to its users.

TECHNICAL SUPPORT AND SERVICES

If you have questions about installing or using this software, check this and other documents first - you will find answers to most of your questions here or there. If you need further assistance, please contact us.

Getting Started with StarWind Native SAN for Hyper-V

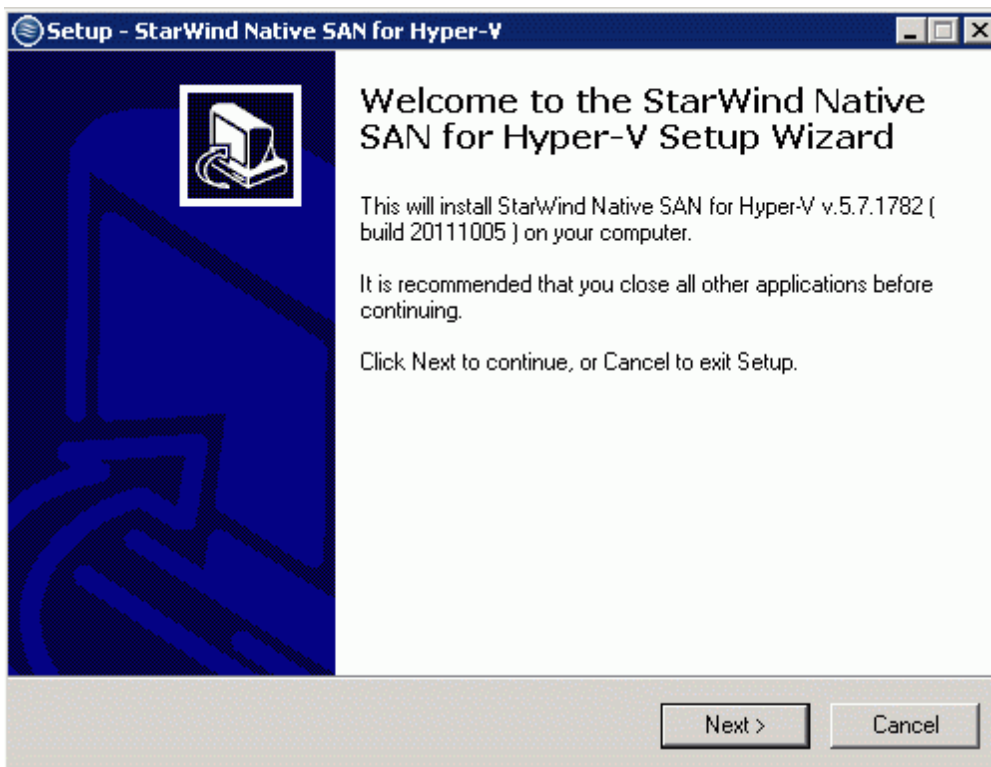
This guide is intended for experienced Windows system administrators who will be installing the StarWind Native SAN for Hyper-V software in their IT infrastructure. StarWind can be used as shared storage for almost any application, it is fully compatible for use with Hyper-V or Server Clusters for applications as SQL Server, Exchange and SharePoint.

Downloading and installing

First thing you need to do is obtain StarWind setup executable file from our website.

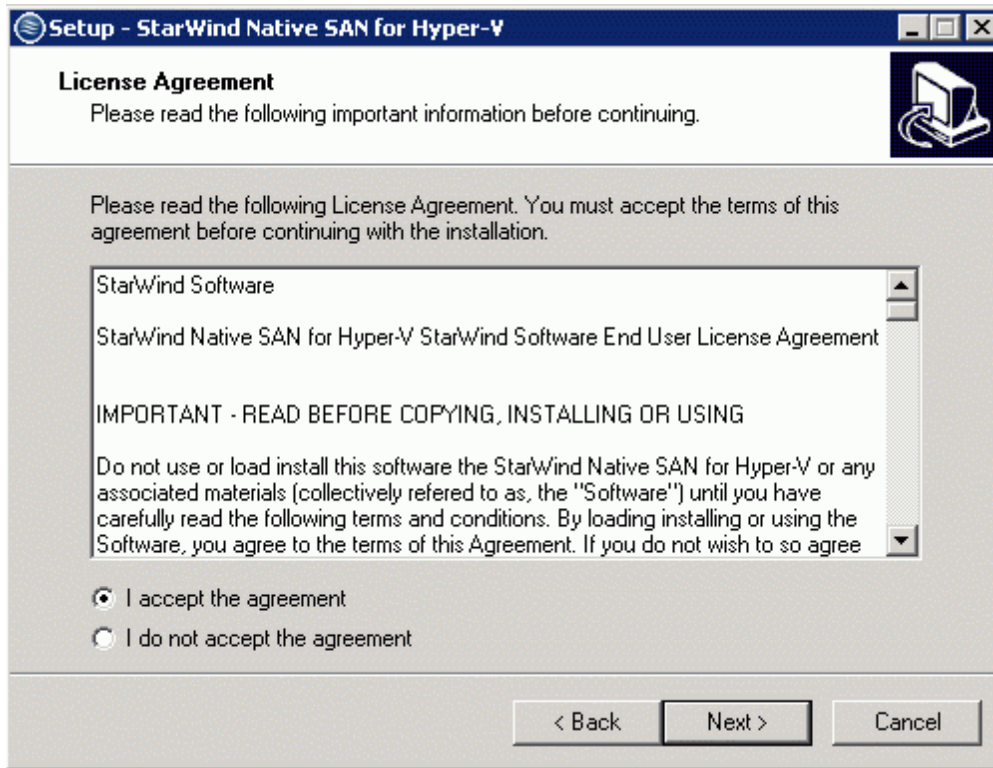
Once executable setup file downloaded, launch it on the server which you want to turn into SAN storage.

A Setup Wizard window will appear:



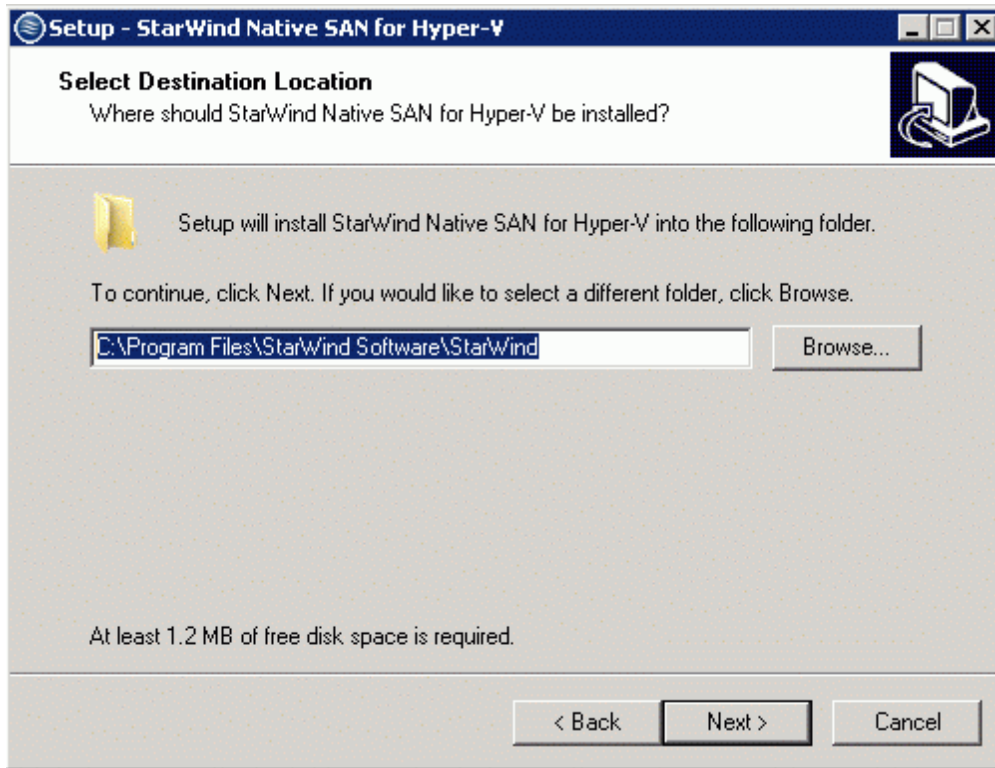
Click the **Next** button to continue.

Read and accept the license agreement.



Click the **Next** button to continue.

Select the installation path.



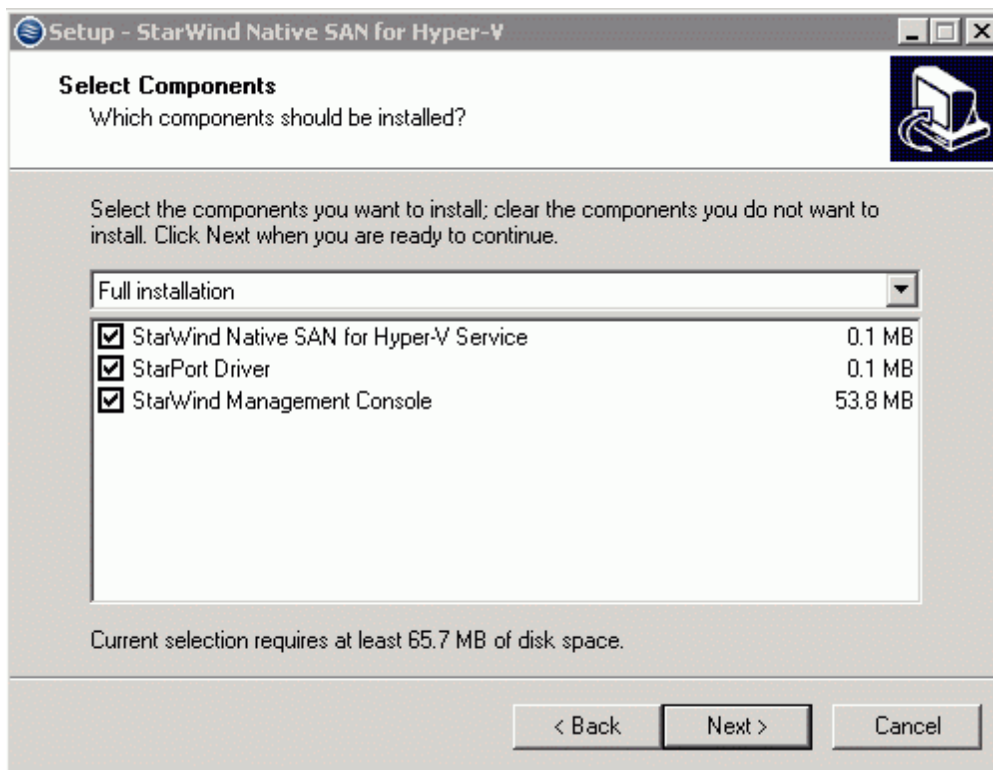
Click the **Next** button to continue.

Specify the installation type:

Full installation: includes both StarWind Native SAN for Hyper-V Service and Management Console so that you can manage the resources from the machine where you are installing the product.

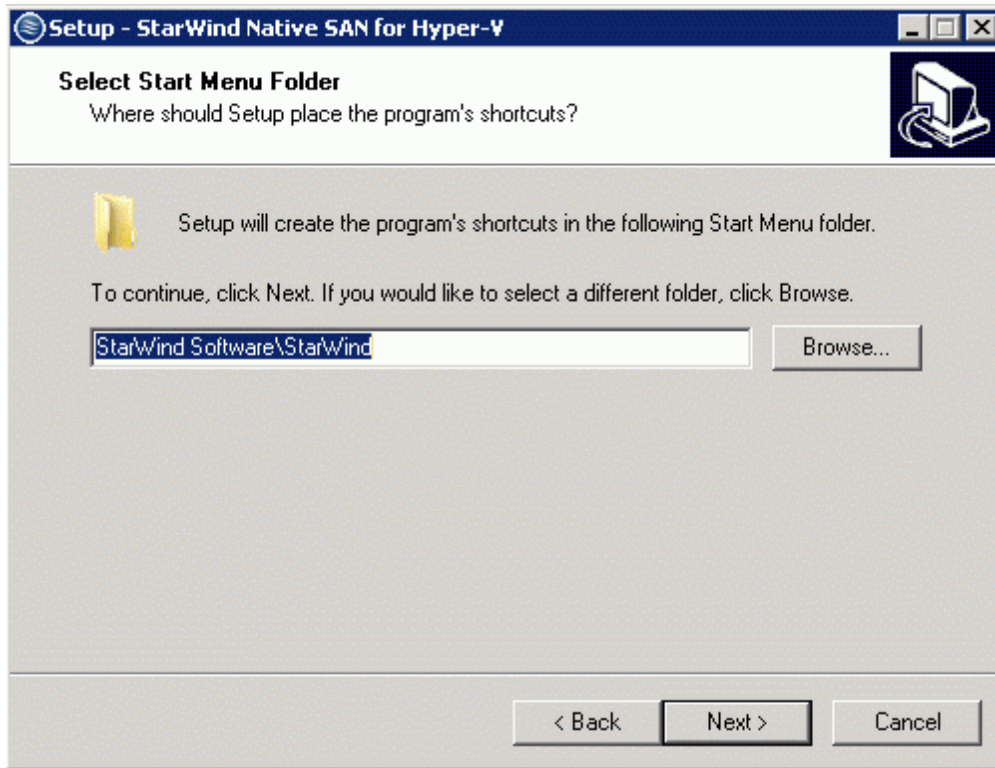
StarWind Native SAN for Hyper-V Service: best fits for installing on as server which will be managed remotely.

StarWind Management Console: The Graphical User Interface (GUI) part of the program, which allows you to create devices on the target servers in your service. Also you have an opportunity to install **StarWind Manuals**.



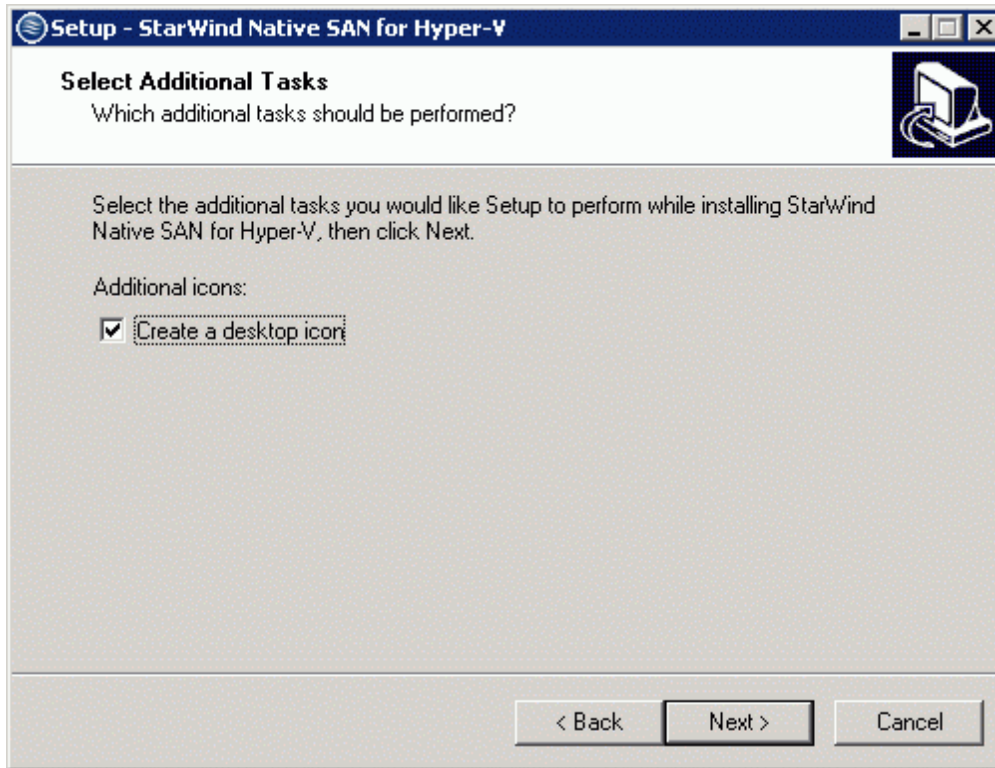
Click the **Next** button to continue.

Specify the Start Menu folder.



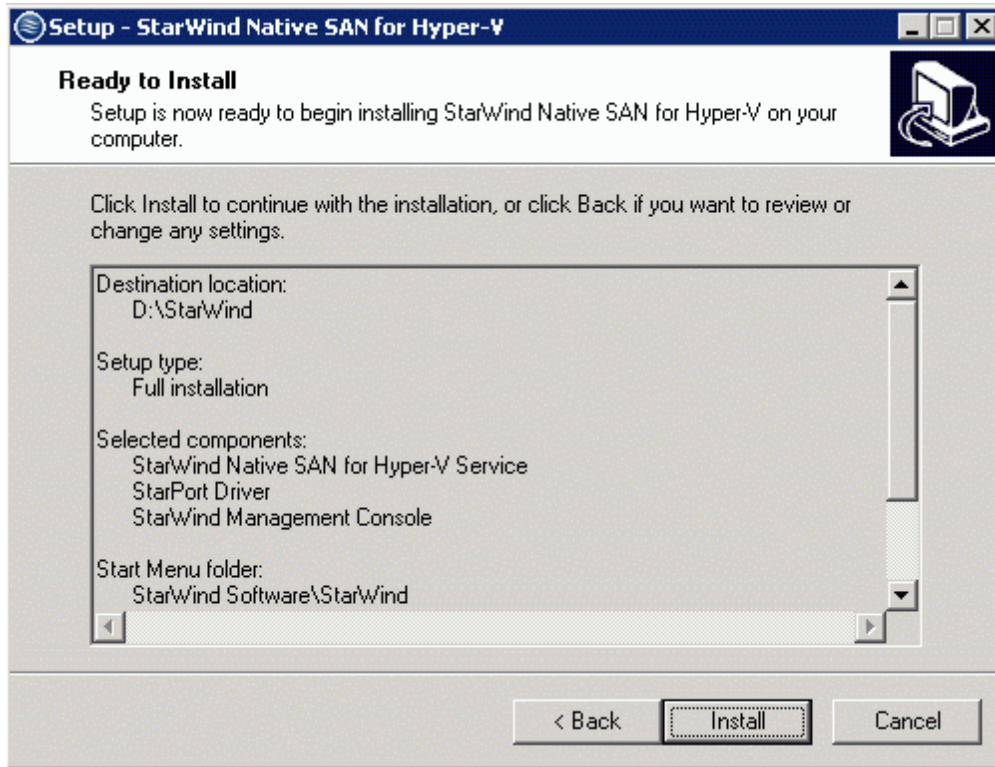
Click the **Next** button to continue.

Tick the checkbox if you need a desktop icon.



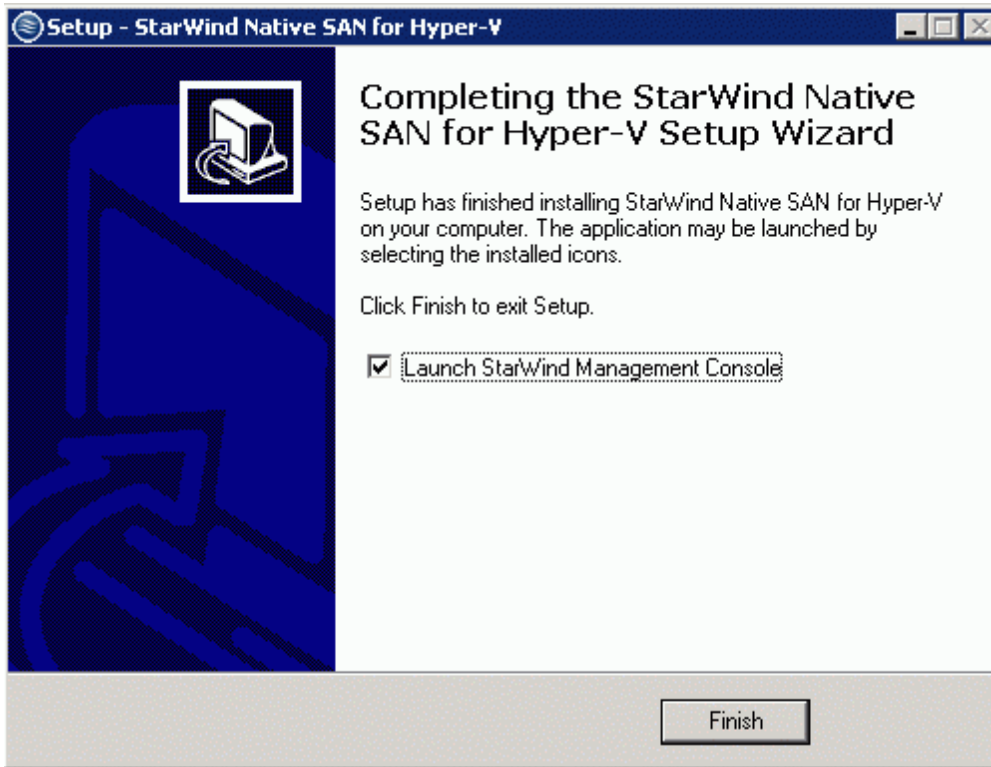
Click the **Next** button to continue.

Review the settings you have specified during the installation setup, click the **Back** button if you need to apply any changes.



Click the **Install** button to continue.

After the installation process is complete, you will see a window confirming that you have successfully installed StarWind Native SAN for Hyper-V. Tick the checkbox if you want to run StarWind Management Console immediately.

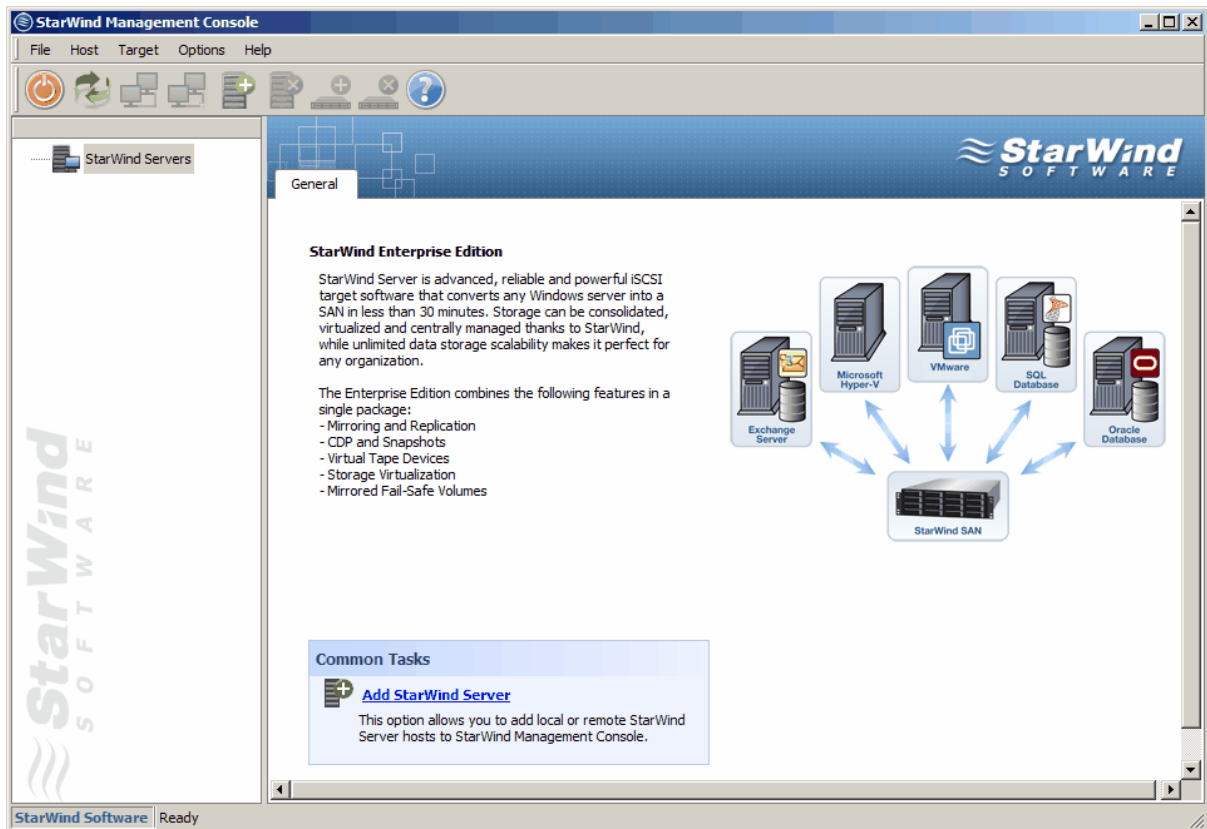



Click the **Finish** button to close the installation wizard.

Registering the Software

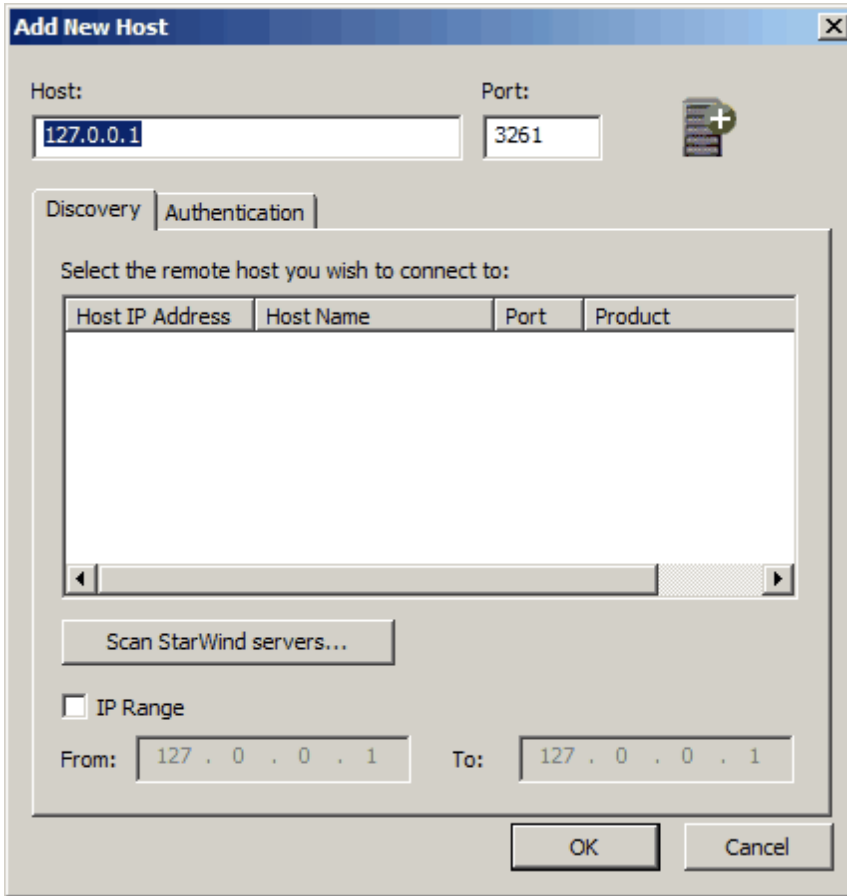
Open the StarWind Management Console by double clicking on the StarWind tray icon. StarWind Management Console allows you to manage multiple StarWind servers from one computer.

By default there are no servers in the Management Console.



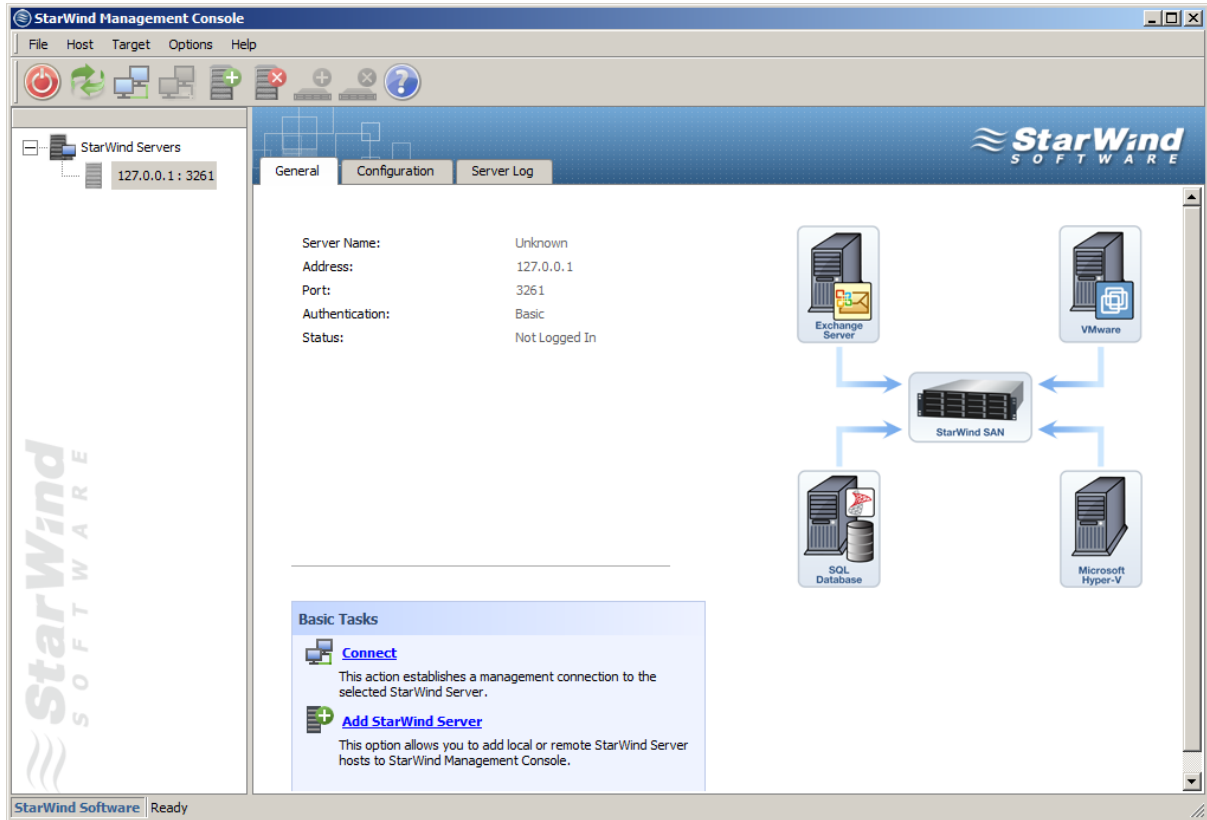
To add one click the  button.


Add New Host window will appear.
Specify the target server's IP address.



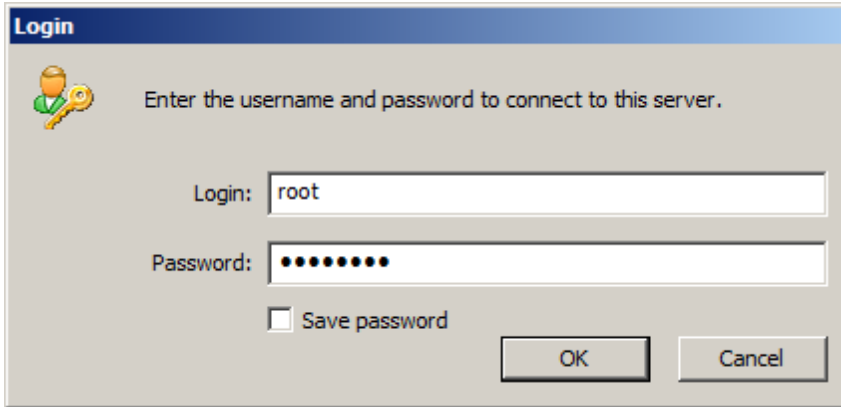
Click the **OK** button to continue.

Now the server is listed in the servers section of the StarWind Management Console.



Click the  button to connect to the server.

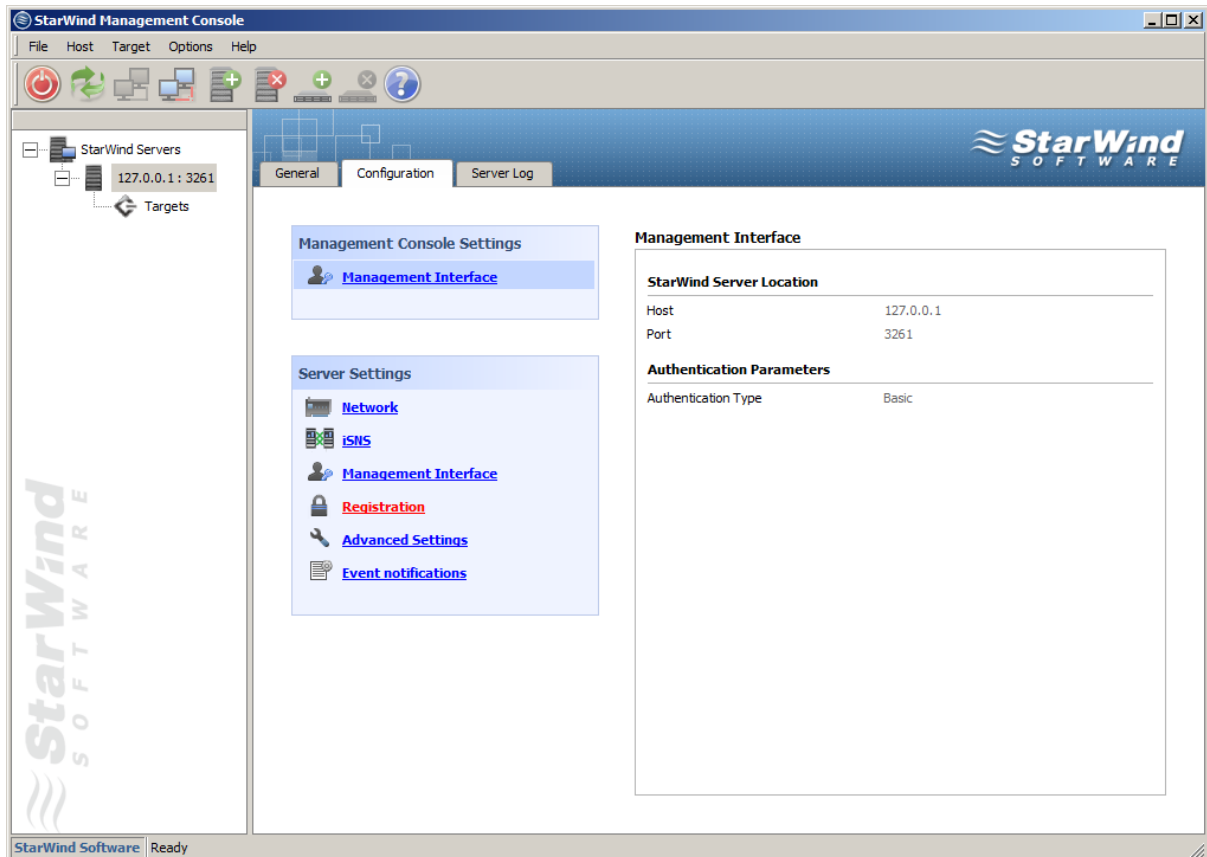
You will be prompted to enter the login and password.
The default login and password are “root” and “starwind”. You can always change them later.



The image shows a Windows-style dialog box titled "Login". It contains a key icon and the text "Enter the username and password to connect to this server." Below this, there are two input fields: "Login:" with the text "root" and "Password:" with ten black dots. A checkbox labeled "Save password" is unchecked. At the bottom right, there are "OK" and "Cancel" buttons.

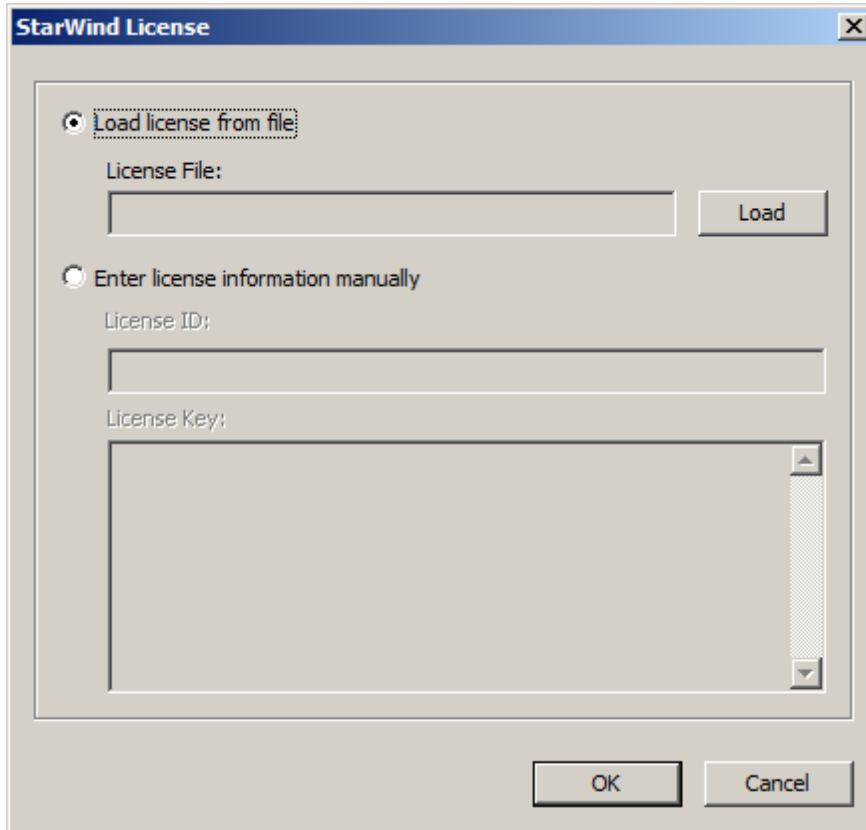
Click the **OK** button to continue.

Now, when you are connected to the StarWind service on the server you have to go through registration procedure: select the server you have connected to and go to the **Configuration** tab. Click the **Registration** link. You will see the information about the license installed on this server.



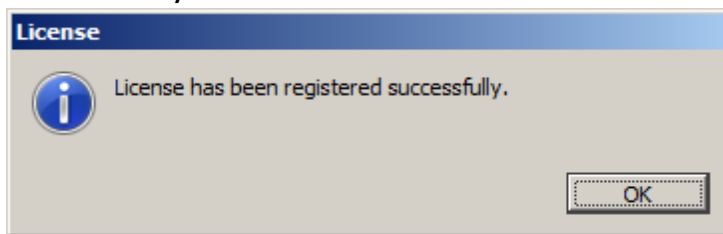
Click the **Install** link to apply a license.

Load your license from file by clicking the **Load** button and selecting the license file you have received.



Click the **OK** button to continue.

You will see a confirmation window saying that your license has been successfully installed:



Click the **OK** button to close the window.

On the second StarWind Native SAN for Hyper-V server perform the same steps described above. Now you are ready to create devices. To get more information refer to the built-in help.

Contacts

Support: www.starwindsoftware.com/support

Support Forum: www.starwindsoftware.com/forums

Sales E-mail: sales@starwindsoftware.com

US Headquarters

Direct phone number: 1-617-449-7717

Fax: 1-617-507-5845

EMEA, APAC

Direct phone numbers: +44-0-2071936727

+44-0-2071936350

Voice Mail: 1-866-790-2646

StarWind Software Inc.

40 Mall Rd., Burlington

MA 01803, USA

www.starwindsoftware.com