

StarWind iSCSI SAN Software: Installing StarWind on Windows Server 2008 R2 Server Core

www.starwindsoftware.com

Copyright © StarWind Software 2008-2011. All rights reserved.

COPYRIGHT

Copyright © StarWind Software 2008-2011. All rights reserved. No part of this publication may be reproduced, stored in a retrieval system, or transmitted in any form or by any means, electronic, mechanical, photocopying, recording or otherwise, without the prior written consent of StarWind Software.

TRADEMARKS

“StarWind”, “StarWind Software” and the StarWind and the StarWind Software logos are trademarks of StarWind Software which may be registered in some jurisdictions. All other trademarks are owned by their respective owners.

CHANGES

The material in this document is for information only and is subject to change without notice. While reasonable efforts have been made in the preparation of this document to assure its accuracy, StarWind Software assumes no liability resulting from errors or omissions in this document, or from the use of the information contained herein. StarWind Software reserves the right to make changes in the product design without reservation and without notification to its users.

TECHNICAL SUPPORT AND SERVICES

If you have questions about installing or using this software, check this and other documents first - you will find answers to most of your questions here or there. If you need further assistance, please contact us.

Table of Contents

Getting Started with StarWind.....	4
Preparing Windows Server 2008 R2 Server Core.....	5
Downloading and Installing.....	8
Installing Starwind Management Console on Remote Computer.....	17
Registering the Software.....	25

Guide

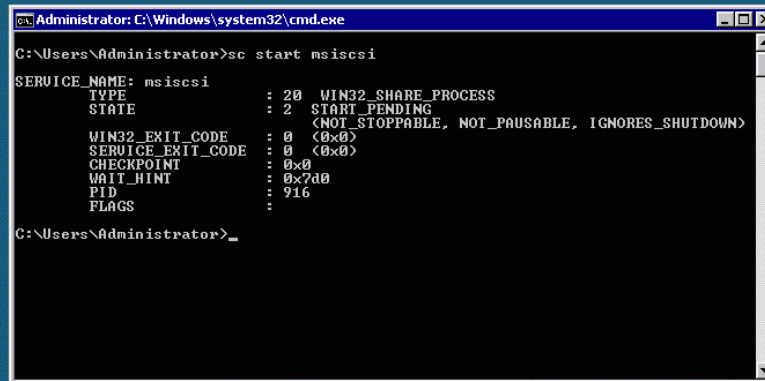
Getting Started with StarWind

This guide is intended for experienced Windows system administrators who will be installing the StarWind iSCSI SAN software on Windows Server 2008 R2 Server Core.

Preparing Windows Server 2008 R2 Server Core

Start Microsoft iSCSI service before installing StarWind Software on your server. To do this, type the following in the command prompt:

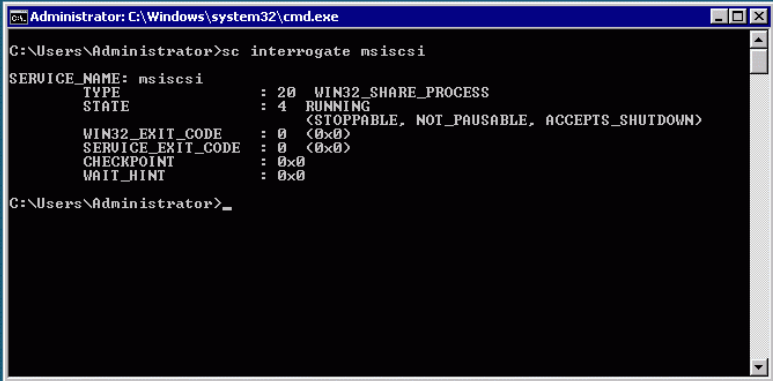
sc start msiscsi



```
Administrator: C:\Windows\system32\cmd.exe
C:\Users\Administrator>sc start msiscsi
SERVICE_NAME: msiscsi
        TYPE               : 20  WIN32_SHARE_PROCESS
        STATE                : 2   START_PENDING
                        (NOT_STOPPABLE, NOT_PAUSABLE, IGNORES_SHUTDOWN)
        WIN32_EXIT_CODE       : 0    (0x0)
        SERVICE_EXIT_CODE   : 0    (0x0)
        CHECKPOINT           : 0x0
        WAIT_HINT            : 0x7d0
        PID                  : 916
        FLAGS                 :
C:\Users\Administrator>_
```

You can find the status of the service at any time by using the interrogate command. To find the status of the iSCSI service, type the following in the command prompt:

sc interrogate msiscsi

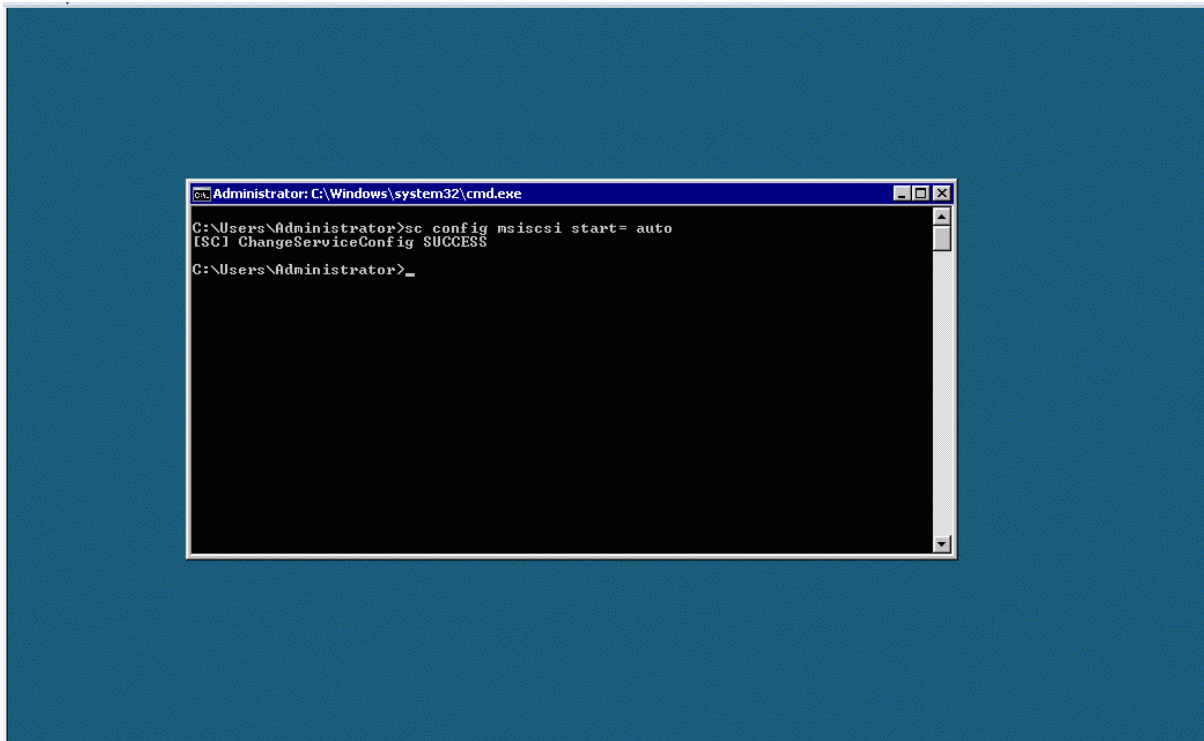


```
Administrator: C:\Windows\system32\cmd.exe
C:\Users\Administrator>sc interrogate msiscsi
SERVICE_NAME: msiscsi
        TYPE               : 20  WIN32_SHARE_PROCESS
        STATE                : 4   RUNNING
                        (STOPPABLE, NOT_PAUSABLE, ACCEPTS_SHUTDOWN)
        WIN32_EXIT_CODE      : 0   (0x0)
        SERVICE_EXIT_CODE  : 0   (0x0)
        CHECKPOINT          : 0x0
        WAIT_HINT           : 0x0

C:\Users\Administrator>_
```

To have the service start automatically on boot, type the following in the command prompt:

sc config msiscsi start= auto



There is no need to configure the Windows Firewall from Windows Server 2008 R2 Server Core to allow iSCSI traffic.

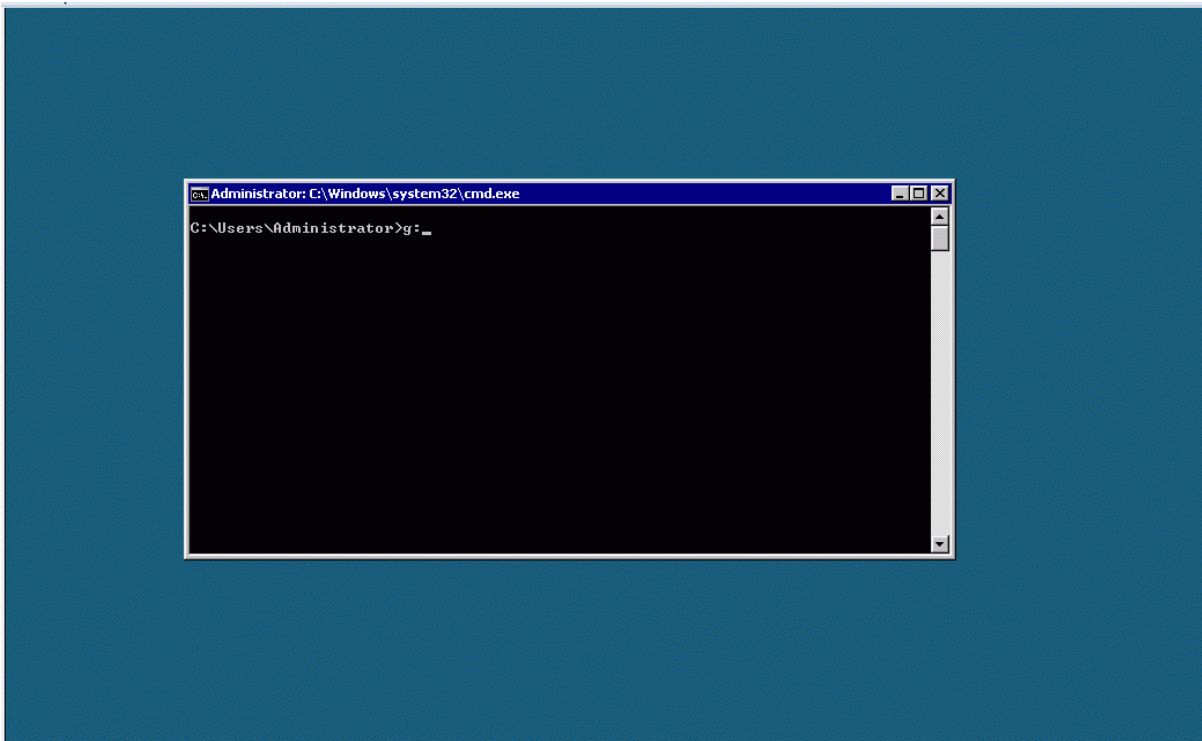
Downloading and Installing

First thing you need to do is obtain StarWind setup executable file from our website.

<http://starwindsoftware.com/download-free-trial>

Once executable setup file has been downloaded, launch it on the server which you want to turn into a SAN storage. In our case the file was downloaded into the G:\Install\. Type the following into the command prompt to change disk:

g:



To launch the installation type the following:

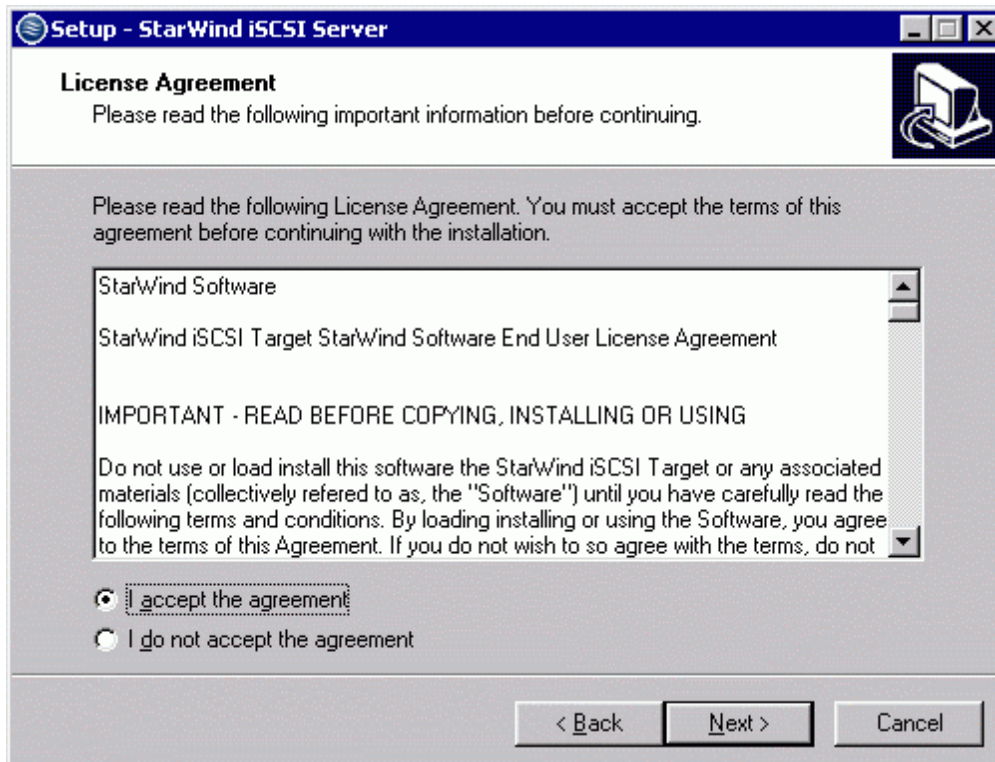
g:\>install\starwind.exe

A Setup Wizard window appears:



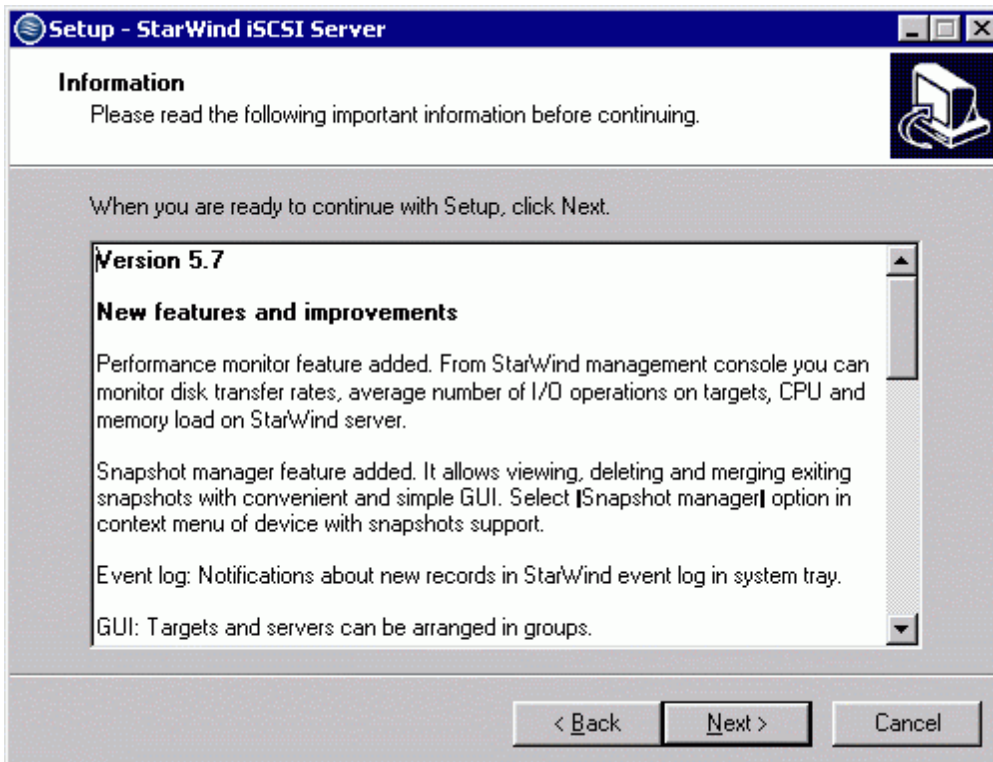
Click the **Next** button to continue.

Read and accept the license agreement.



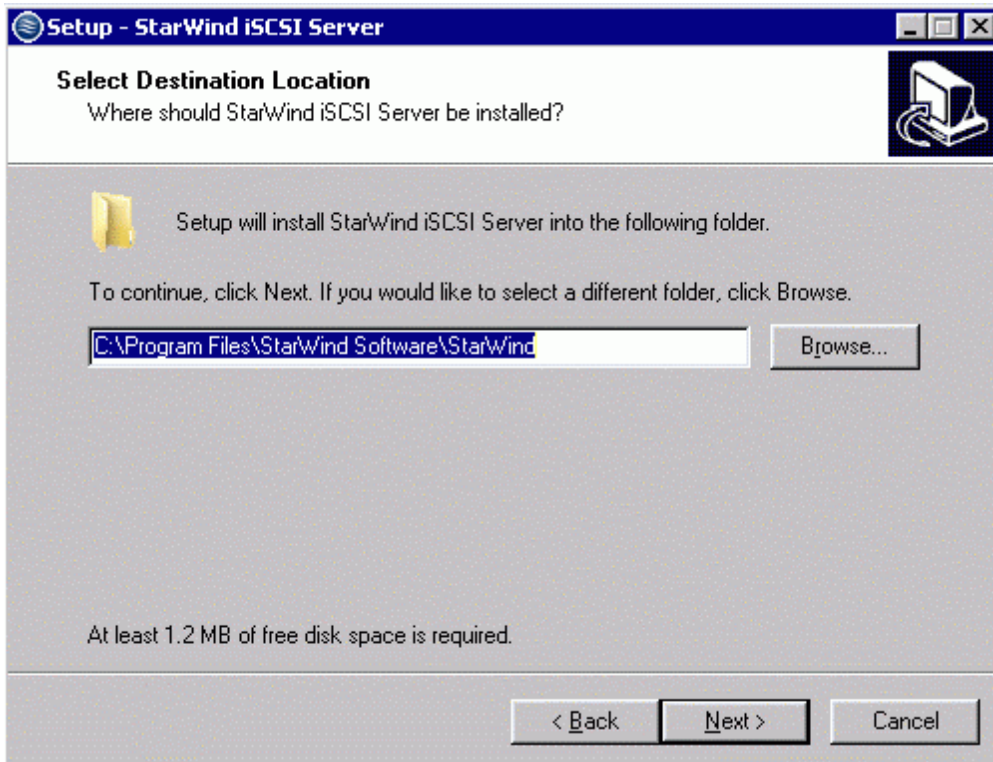
Click the **Next** button to continue.

Read the information.



When you are ready to continue with setup, click the **Next** button.

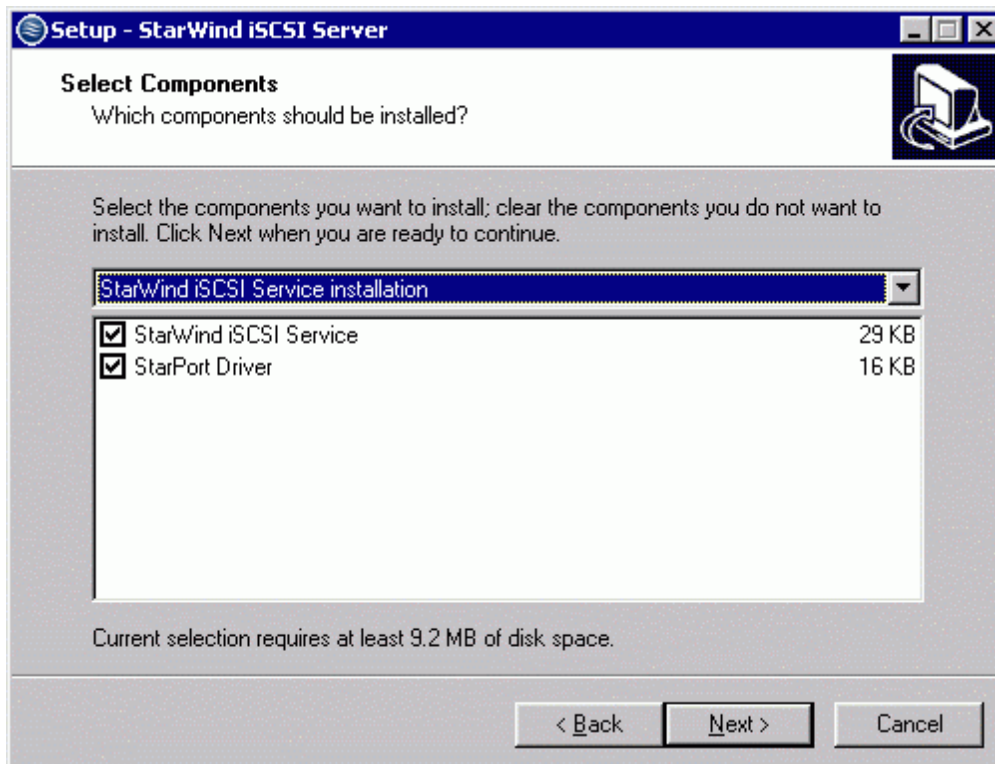
Select the installation path.



Click the **Next** button to continue.

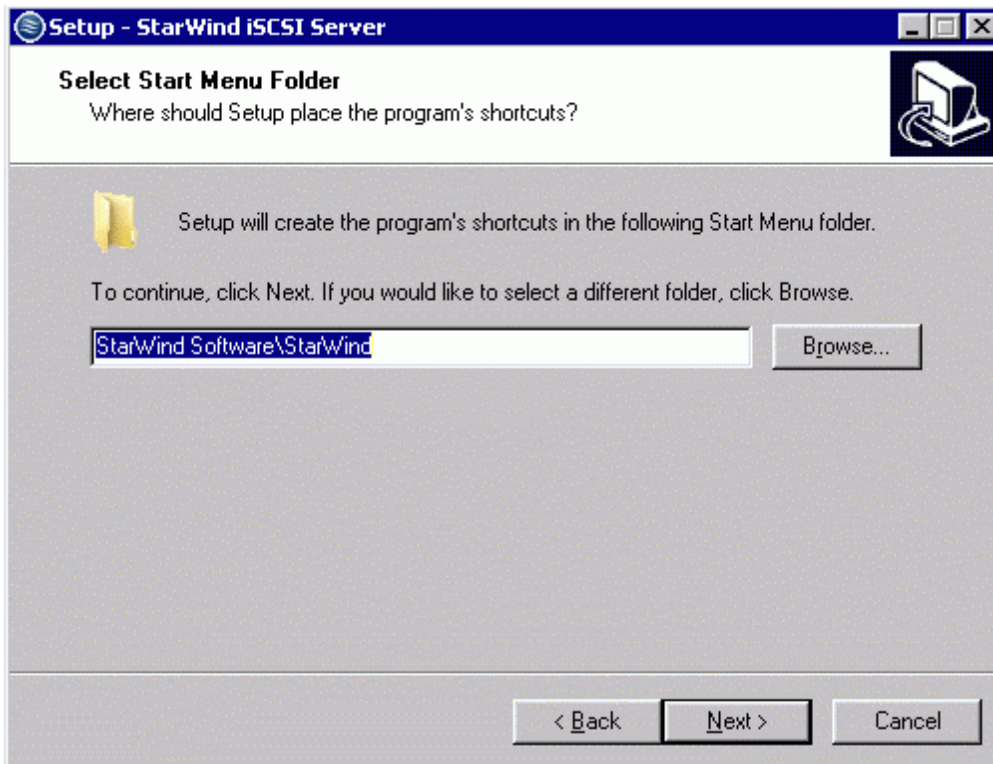
Specify the installation type:

StarWind iSCSI Service fits best for installing on a server which will be managed remotely.



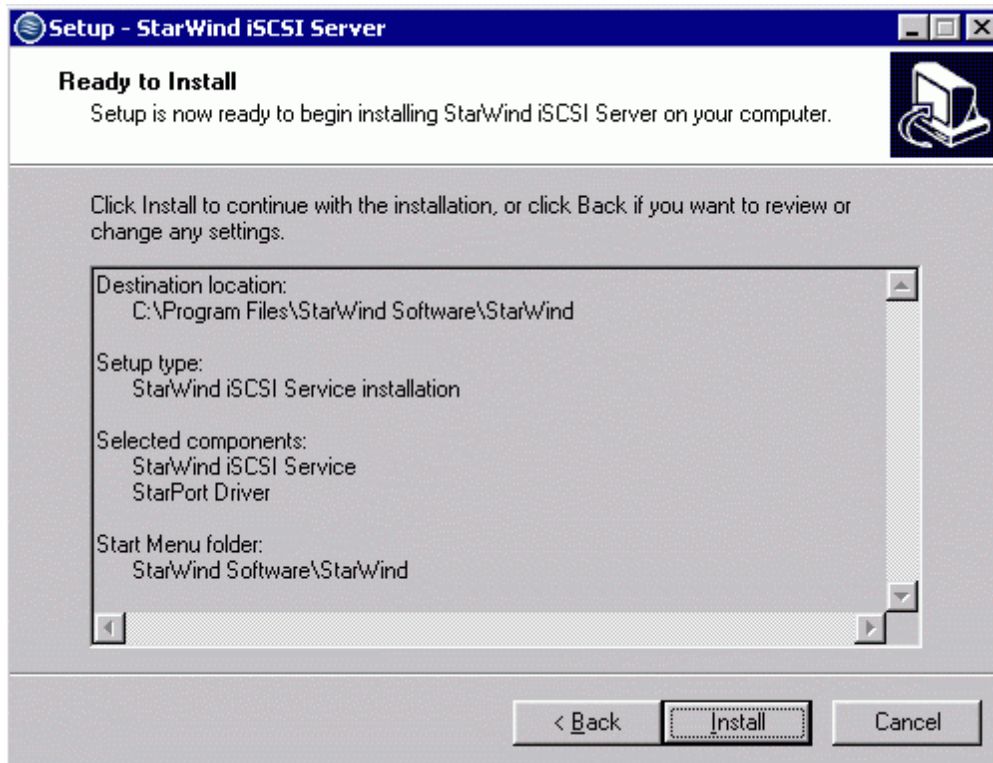
Click the **Next** button to continue.

Specify the Start Menu folder.



Click the **Next** button to continue.

Review the settings you have specified during the installation setup, click the **Back** button if you need to make any changes.



Click the **Install** button to continue.

After the installation process is complete, you will see the window confirming that you have successfully installed StarWind iSCSI SAN.



Click the **Finish** button to close the installation wizard.

Installing Starwind Management Console on Remote Computer

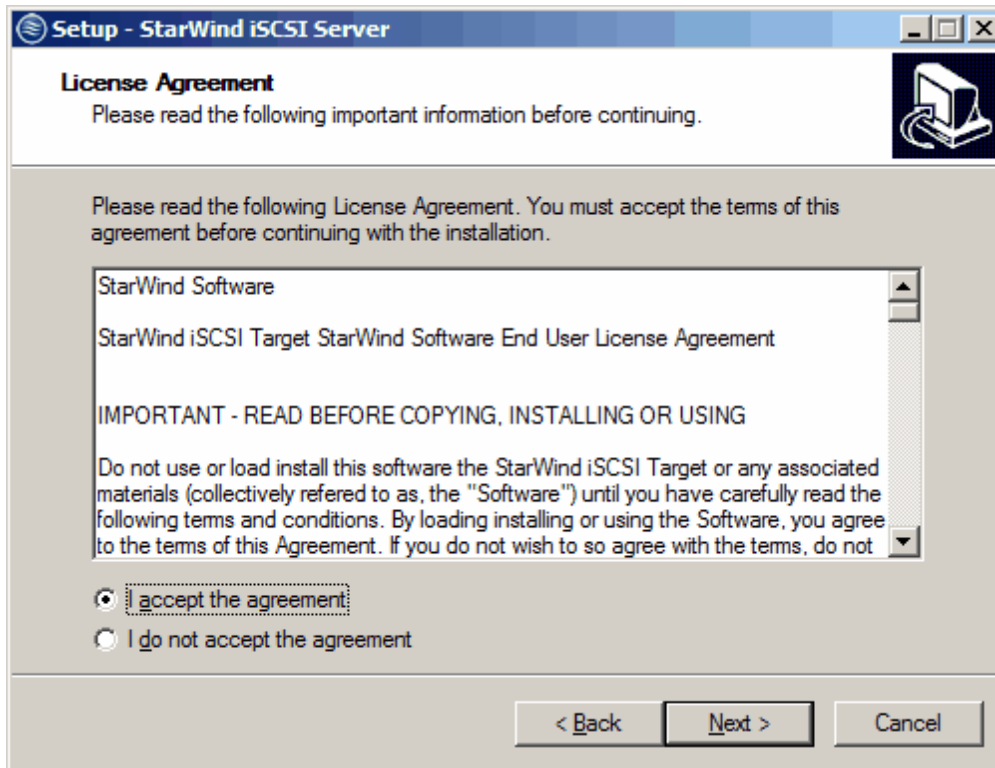
Launch previously uploaded setup file on the remote computer from which you will manage your SAN storage.

A Setup Wizard window appears:



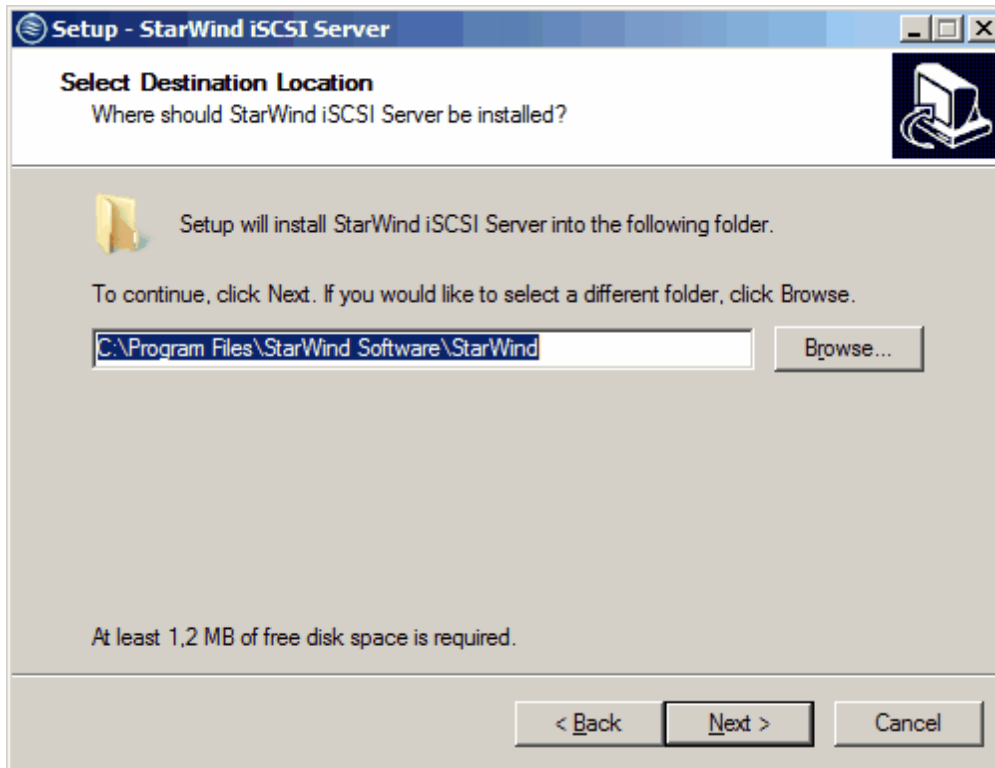
Click the **Next** button to continue.

Read and accept the license agreement.



Click the **Next** button to continue.

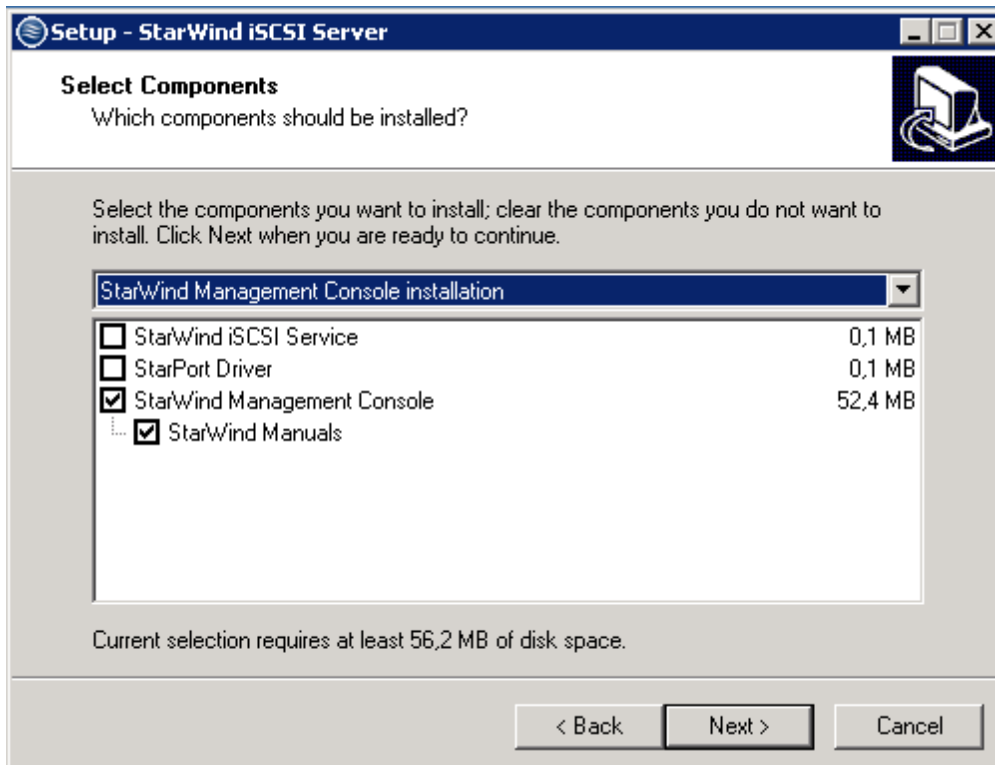
Select the installation path.



Click the **Next** button to continue.

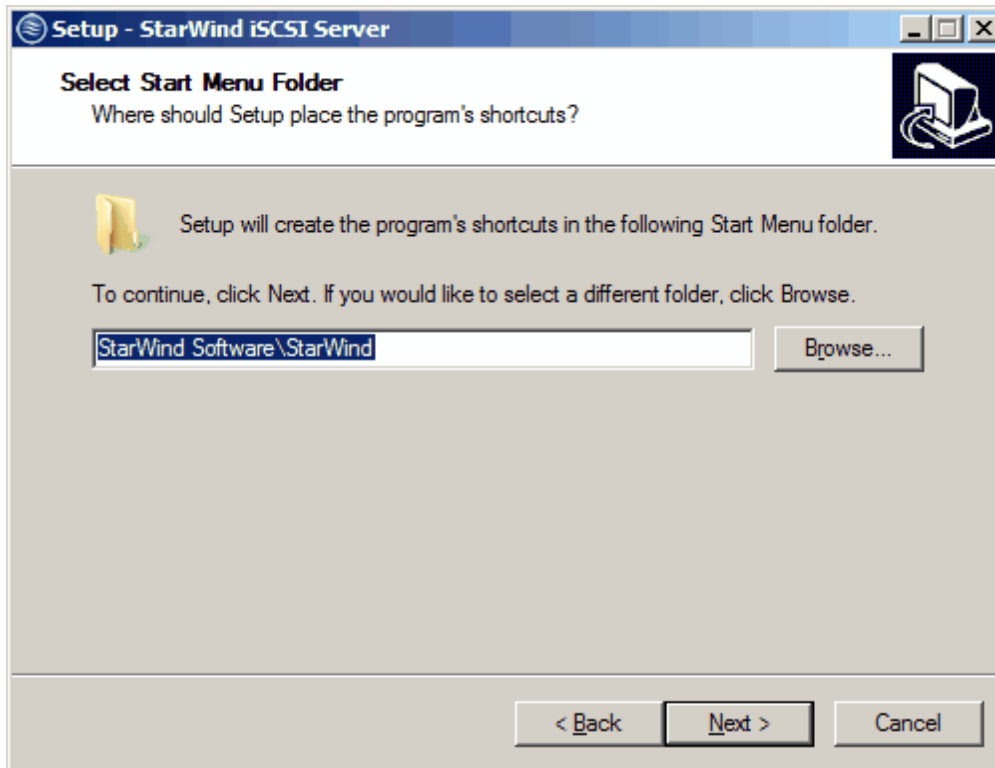
Specify the installation type:

StarWind Management Console is the Graphical User Interface (GUI) part of the program, which allows you to create devices on the target servers in your service. Also you have an opportunity to install **StarWind Manuals**.



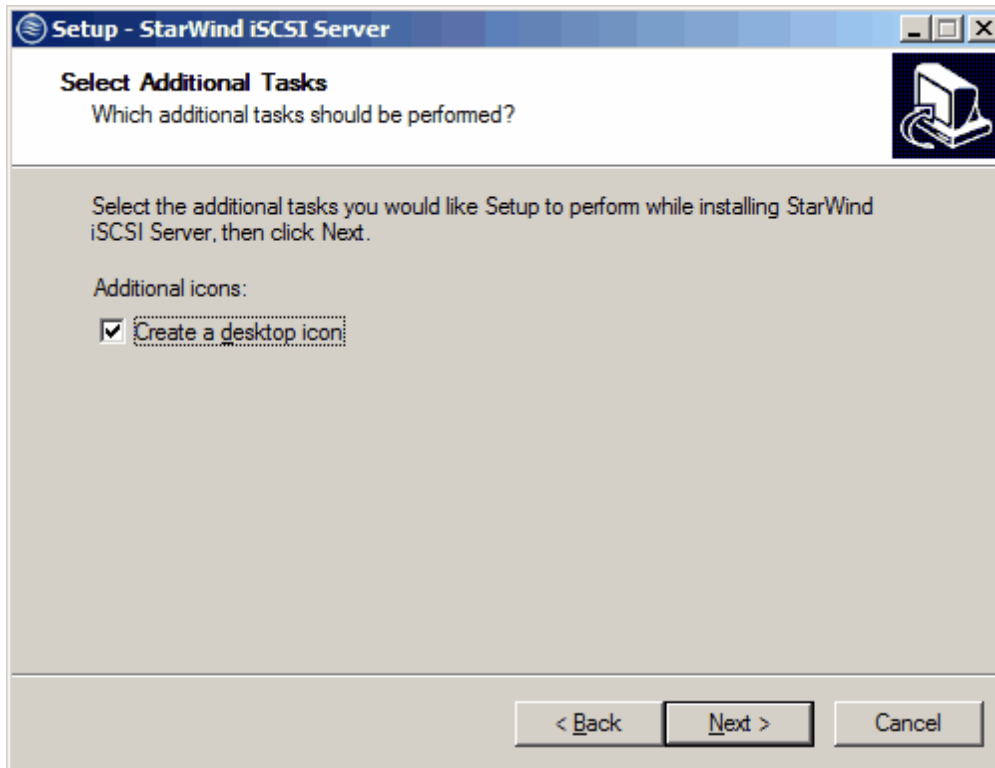
Click the **Next** button to continue.

Specify the Start Menu folder.



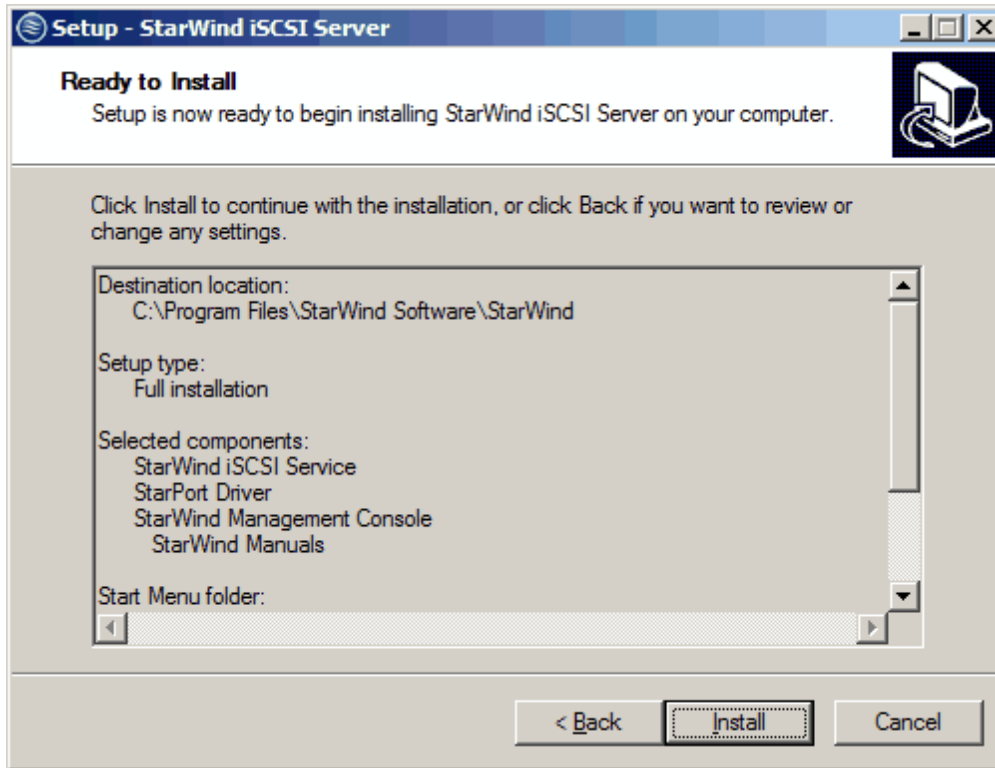
Click the **Next** button to continue.

Select the **Create a desktop icon** checkbox if you need a desktop icon.



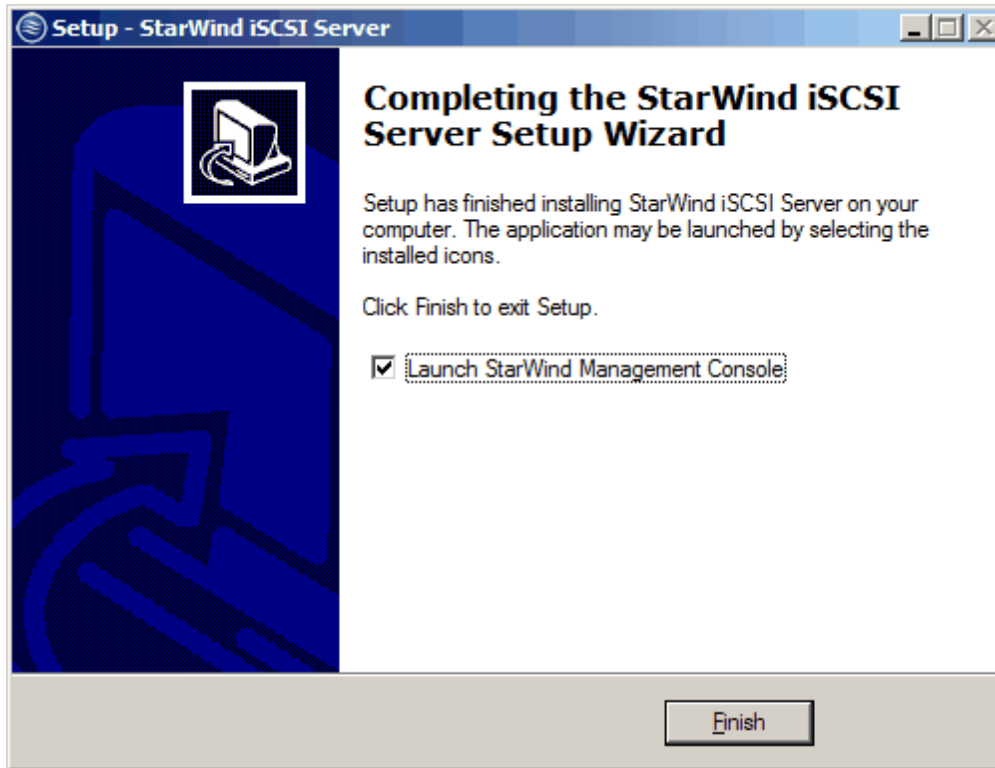
Click the **Next** button to continue.

Review the settings you have specified during the installation setup, click the **Back** button if you need to make any changes.



Click the **Install** button to continue.

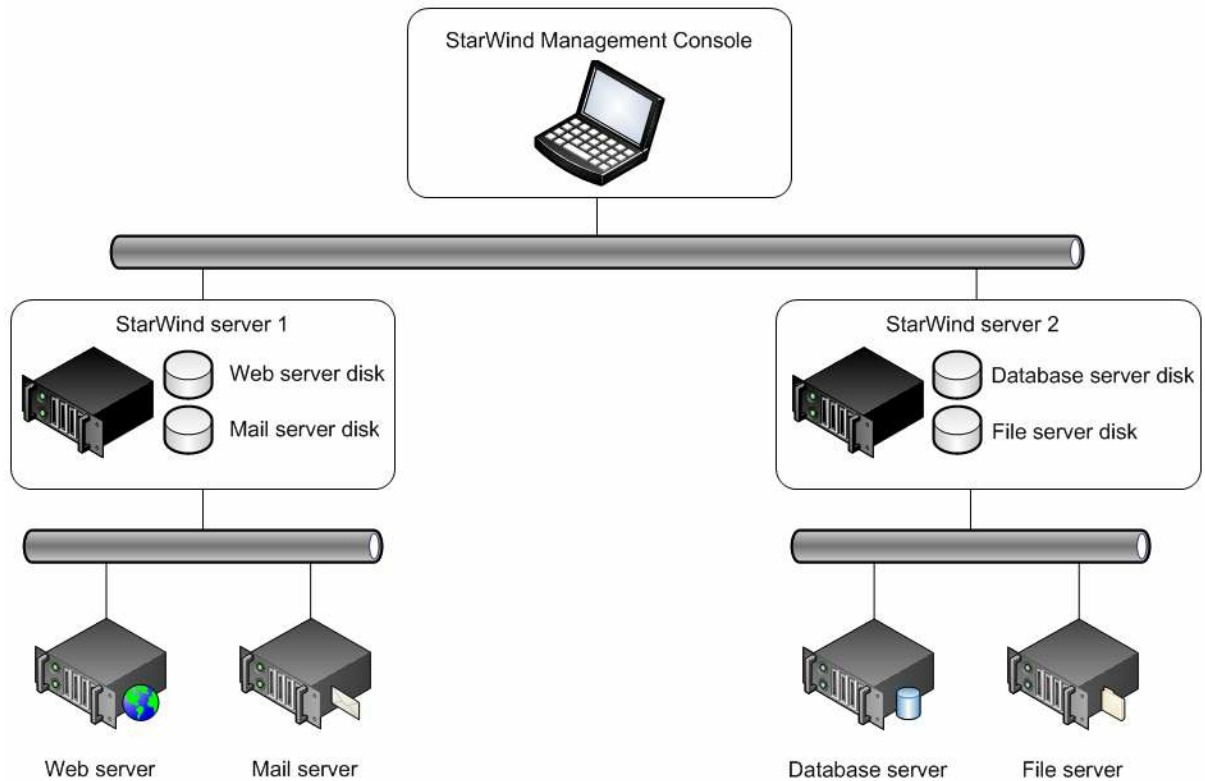
After the installation process is complete, you will see a window confirming that you have successfully installed StarWind iSCSI SAN. Select the **Launch StarWind Management Console** checkbox if you want to run StarWind Management Console immediately.



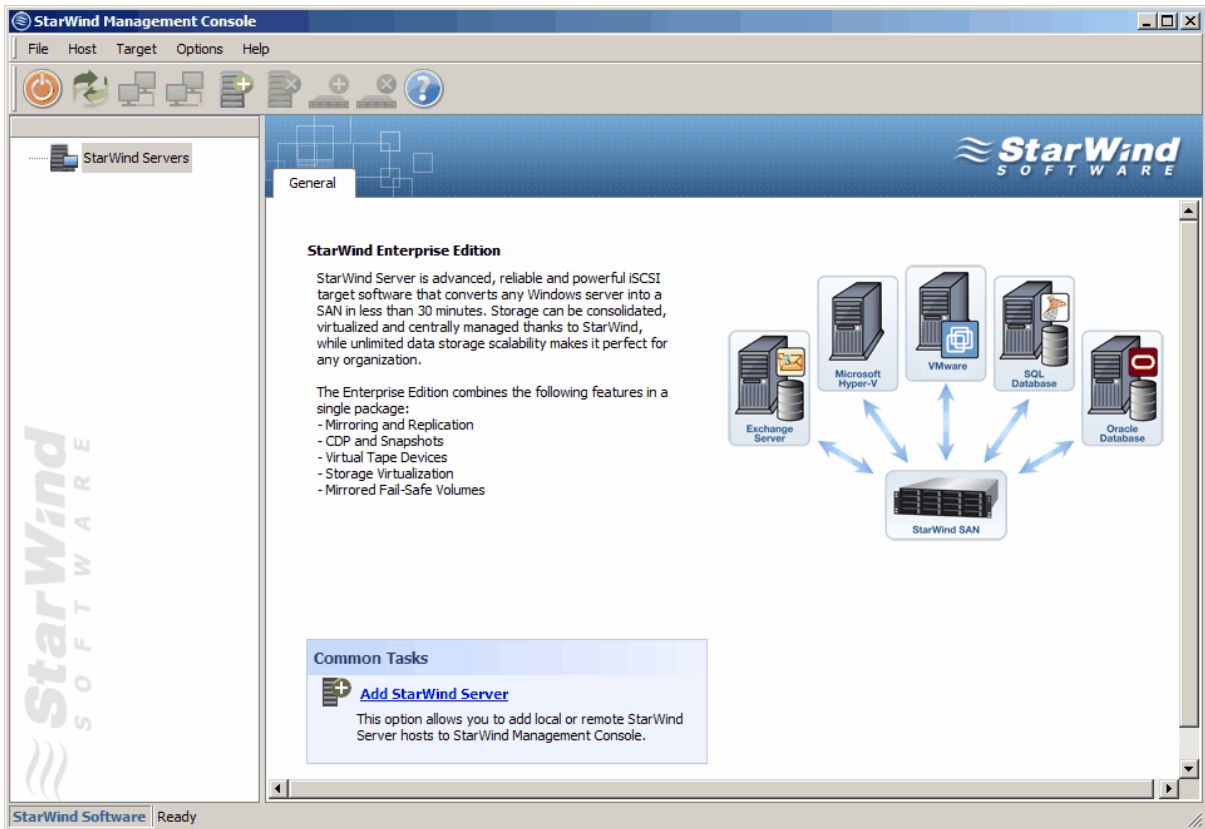
Click the **Finish** button to close the installation wizard.


Registering the Software

Open the StarWind Management Console by double clicking on the StarWind tray icon. StarWind Management Console allows you to manage multiple StarWind servers from one computer.



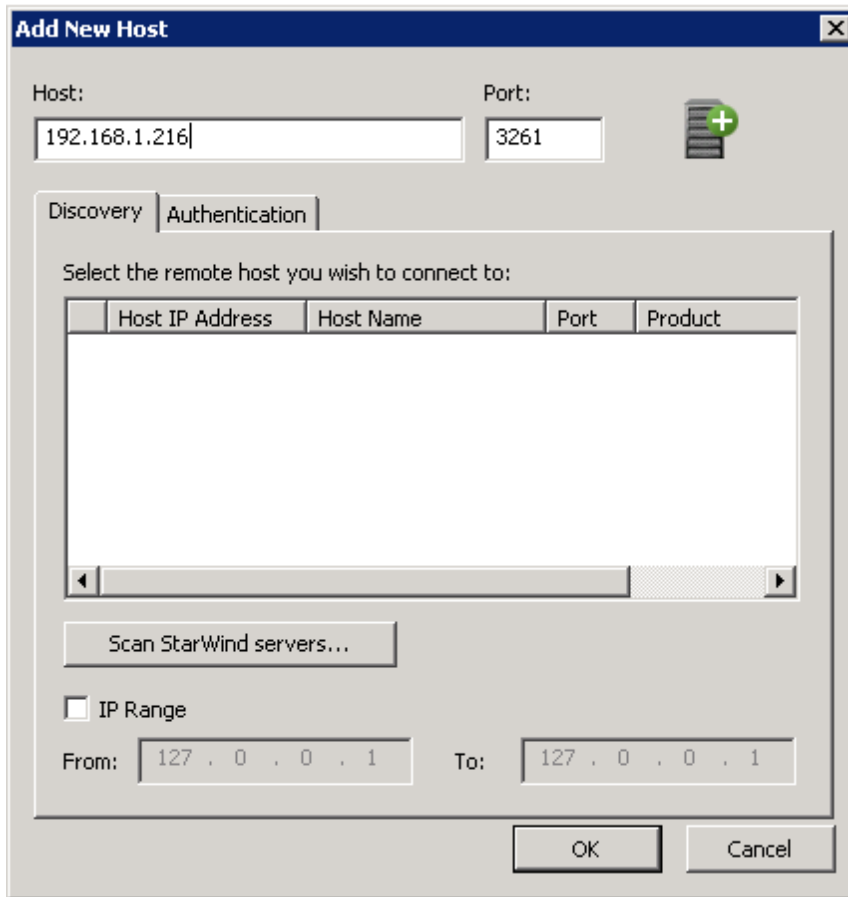
By default there are no servers in the Management Console.



To add server, click the  button.

Add New Host window will appear.

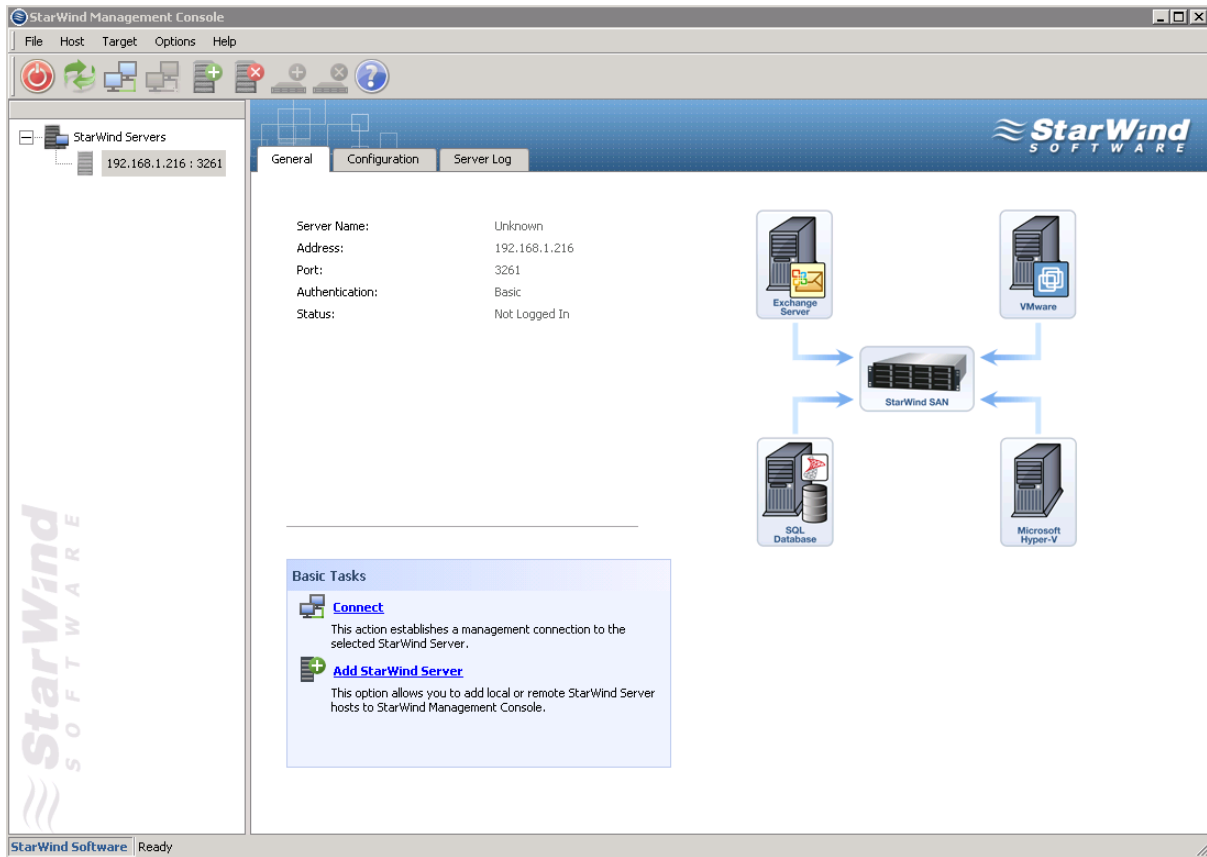
Specify the target server's IP address. In our case IP address of our Windows Server 2008 R2 Server Core is 192.168.1.216.




The screenshot shows the 'Add New Host' dialog box. At the top, there are two input fields: 'Host:' containing '192.168.1.216' and 'Port:' containing '3261'. To the right of the port field is a small icon of a server with a green plus sign. Below these fields are two tabs: 'Discovery' (selected) and 'Authentication'. Under the 'Discovery' tab, the text 'Select the remote host you wish to connect to:' is followed by a table with the following columns: 'Host IP Address', 'Host Name', 'Port', and 'Product'. The table is currently empty. Below the table is a 'Scan StarWind servers...' button. At the bottom, there is an unchecked checkbox labeled 'IP Range'. Below this checkbox are two input fields: 'From:' containing '127 . 0 . 0 . 1' and 'To:' containing '127 . 0 . 0 . 1'. At the very bottom of the dialog are 'OK' and 'Cancel' buttons.

Click **OK** to continue.

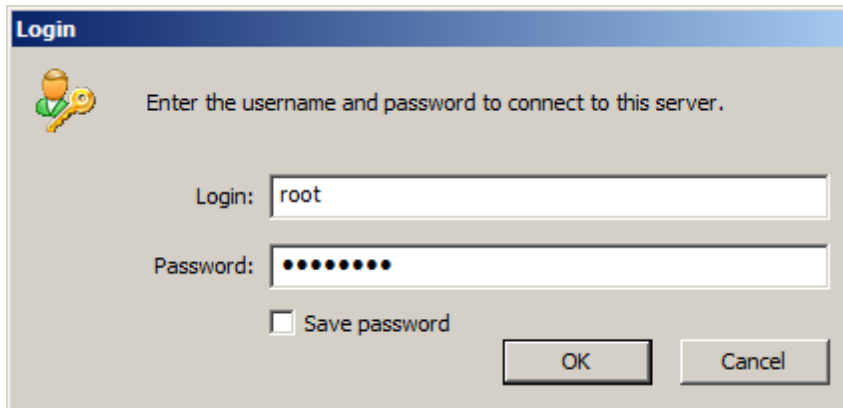
The server appears in the StarWind Servers section of the StarWind Management Console.



Click the  button to connect to the server.

You will be prompted to enter the login and password.

The default login and password are “root” and “starwind”. You can always change them later.

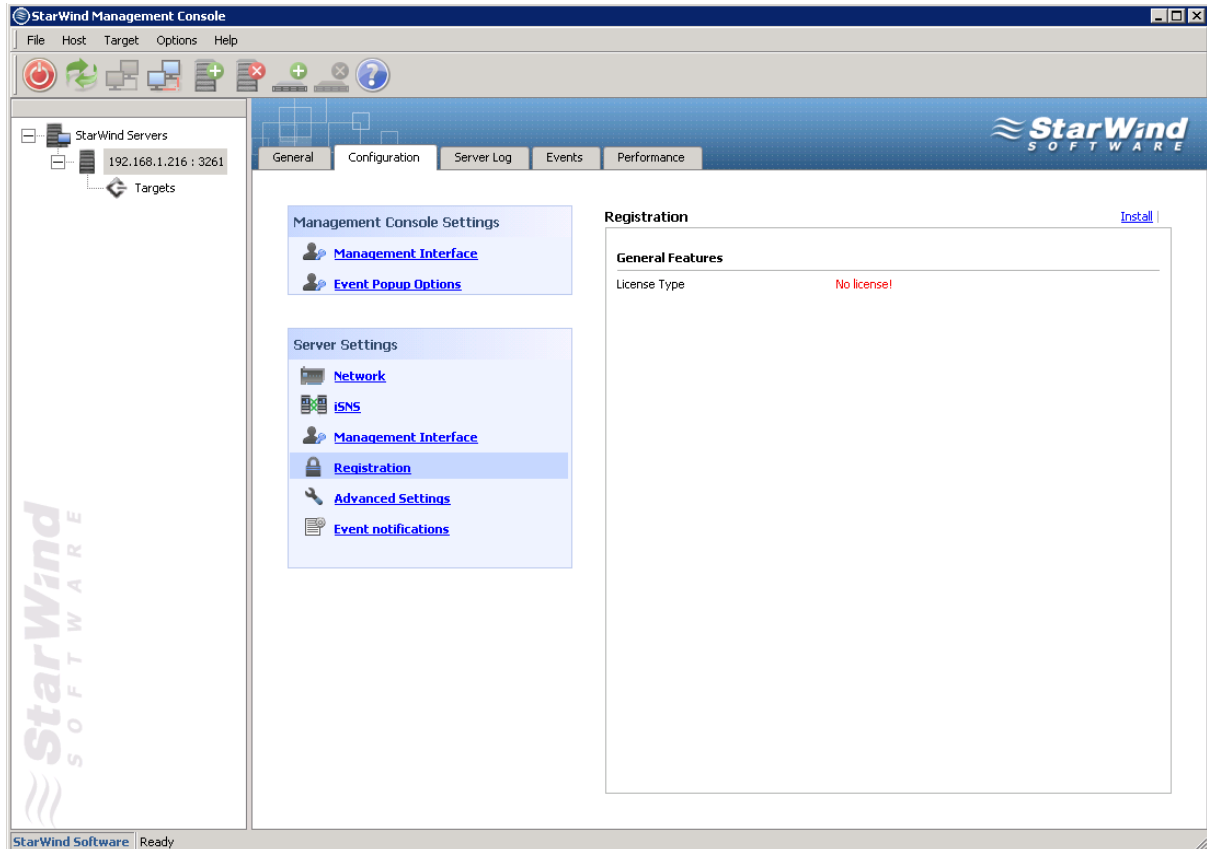


The image shows a Windows-style dialog box titled "Login". It has a blue header bar with the title. Below the header is a key icon and the text "Enter the username and password to connect to this server." There are two text input fields: "Login:" with the text "root" and "Password:" with ten black dots. Below the password field is a checkbox labeled "Save password" which is unchecked. At the bottom right are two buttons: "OK" and "Cancel".

Click the **OK** button to continue.

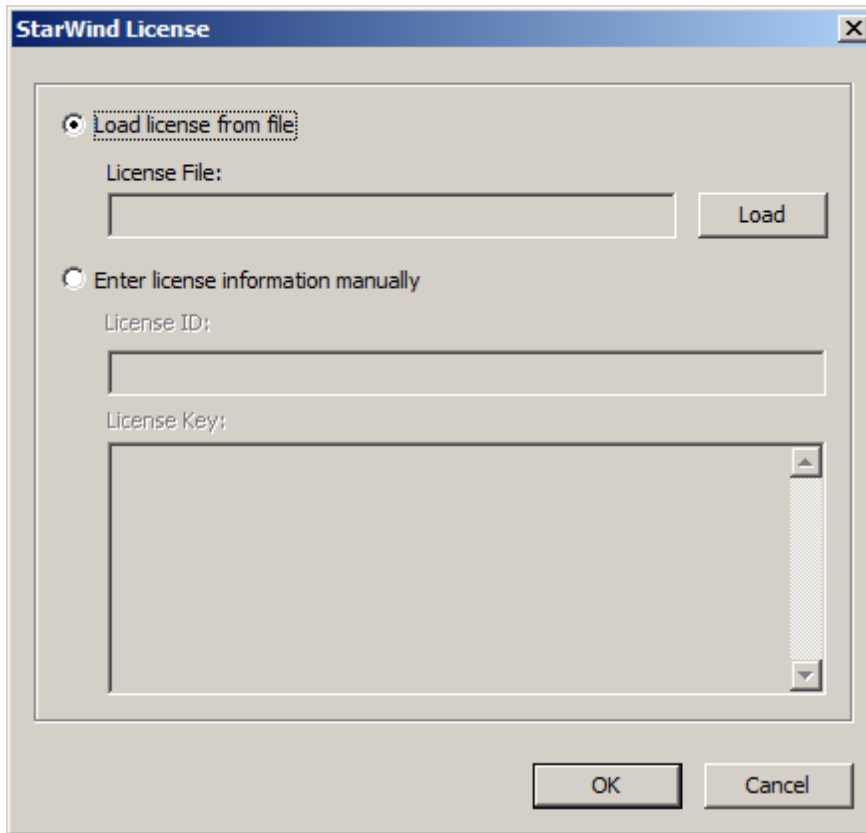
Now, when you are connected to the StarWind service on the server, you have to go through registration procedure.

Select the server you have connected to and click the **Configuration** tab. Click the **Registration** link. You will see the information about the license installed on this server.



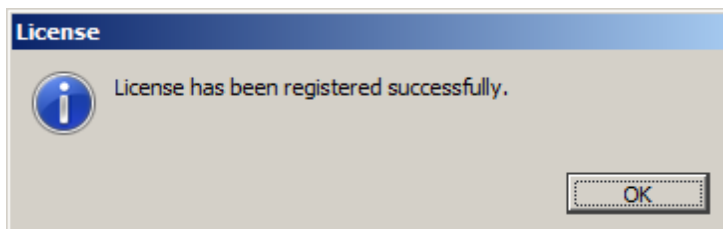
Click the **Install** link to apply a license.

Click the **Load** button and select the license file you have received.



Click **OK** to continue.

You will see a confirmation window saying that your license has been successfully installed:



Click **OK** to close the window.

Contacts

Support: www.starwindsoftware.com/support

Support Forum: www.starwindsoftware.com/forums

Sales E-mail: sales@starwindsoftware.com

US Headquarters

Direct phone number: 1-617-449-7717

Fax: 1-617-507-5845

EMEA, APAC

Direct phone numbers: +44-0-2071936727

+44-0-2071936350

Voice Mail: 1-866-790-2646

StarWind Software Inc.

40 Mall Rd., Burlington

MA 01803, USA

www.starwindsoftware.com