

Quick Start Guide: Hyper-V Backup Plug-in

This guide can be used to quickly download and set up Hyper-V Backup Plug-in. Whether you use the commercial version of Hyper-V Backup or its Free Trial, you can start performing basic operations in minutes.

CONTENTS

WELCOME TO HYPER-V BACKUP PLUG-IN.....	3
RECOMMENDED SYSTEM REQUIREMENTS.....	3
INSTALLATION PROCEDURE.....	4
ADDING HYPER-V SERVERS.....	9
LICENSING AND REGISTRATION.....	12
ADDITIONAL INFORMATION ON HYPER-V BACKUP PLUG-IN.....	14

WELCOME TO HYPER-V BACKUP PLUG-IN

Data protection plays a critical role in the flawless functioning of any virtual environment. You can safely work within your IT infrastructure and totally rely on Hyper-V Backup Plug-in with your VM backup and restore tasks.

We would like your first experience with our solution to be enjoyable that is why we created this Quick Start Guide. It contains practical information about download of the software, generation of license key, and its registering.

RECOMMENDED SYSTEM REQUIREMENTS

The recommended OS for running Backup Plug-in is Windows 2008 Server R2 (64 bit).

Supported OS for Hyper-V Backup:

- Microsoft Hyper-V Server 2008 R2 SP1
- Windows Server 2008 R2 Hyper-V SP1

Supported guest operating systems (32/64 bit) for Hyper-V Backup:

- MS Windows XP SP2
- MS Windows Vista
- MS Windows 7
- MS Windows Server 2003
- MS Windows Server 2008 R2
- Linux-based OS

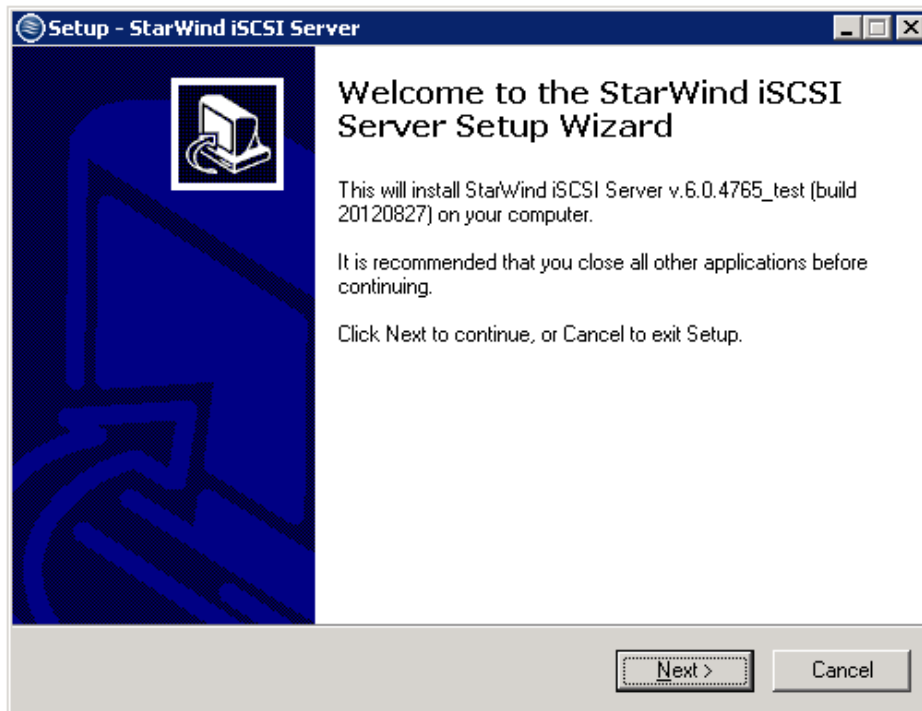
Virtual machine support for Hyper-V Backup:

- All guest operating systems supported by Hyper-V
- Any application
- Any file system

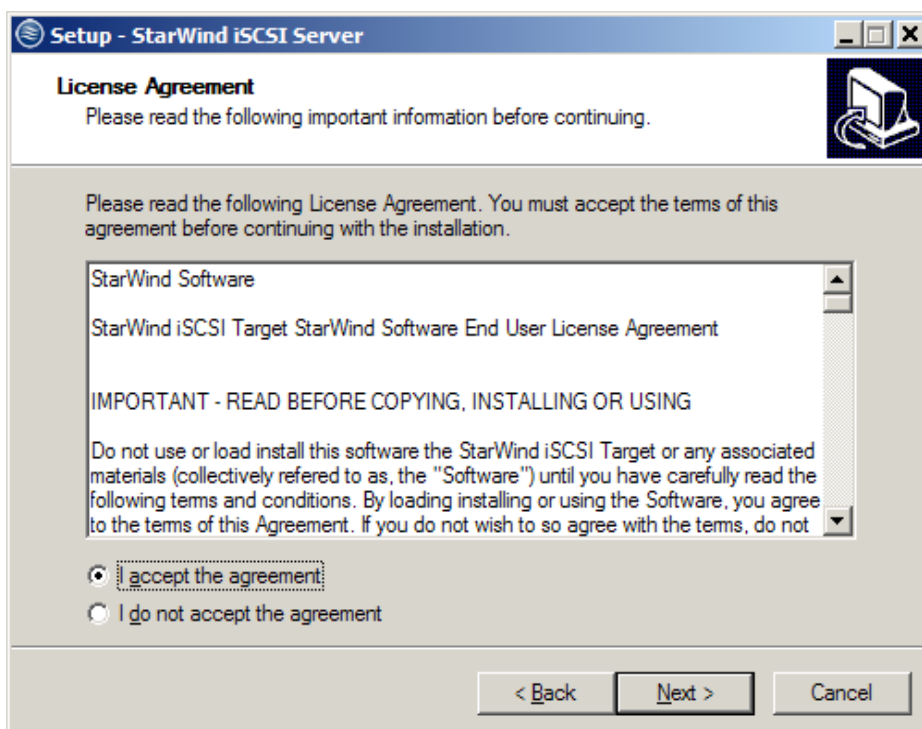
INSTALLATION PROCEDURE

Set up StarWind Management Console with Hyper-V Backup Plug-in:

1. Download **StarWind Backup Plug-in**: <http://www.starwindsoftware.com/customer/download/starwind.exe>
2. Launch the setup file and follow the wizard's steps to install **StarWind Management Console**.
3. Click **Next** to continue.

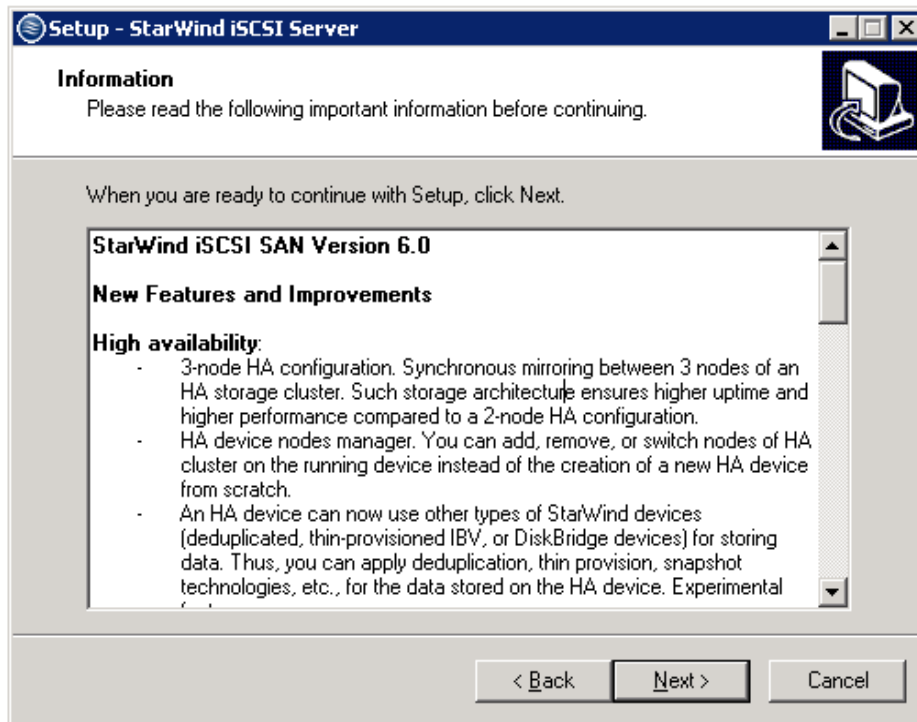


4. Read and accept the terms of the **License Agreement**.
5. Click **Next** to continue.



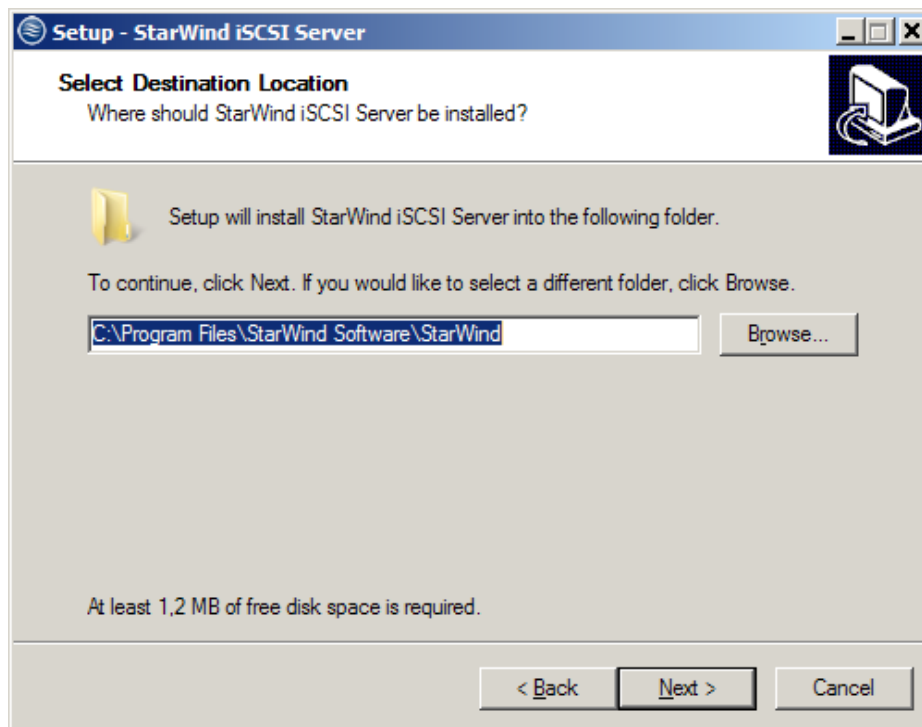
6. Read the information about the StarWind product. Click **Next** to continue.

7. Click **Next** to continue.



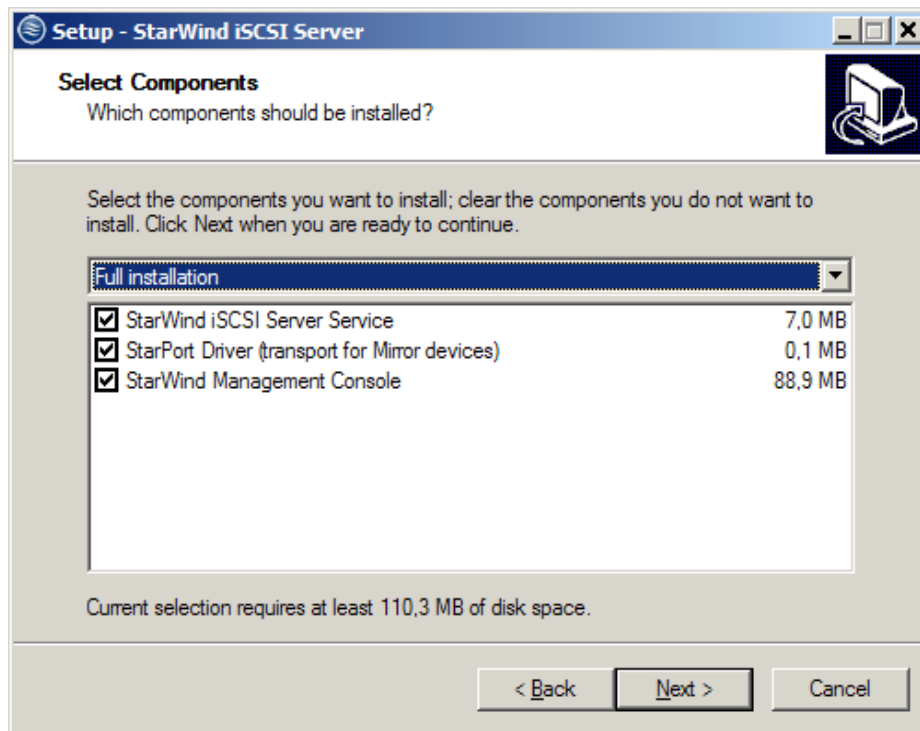
8. Click **Browse** to select the installation path.

9. Click **Next** to continue.



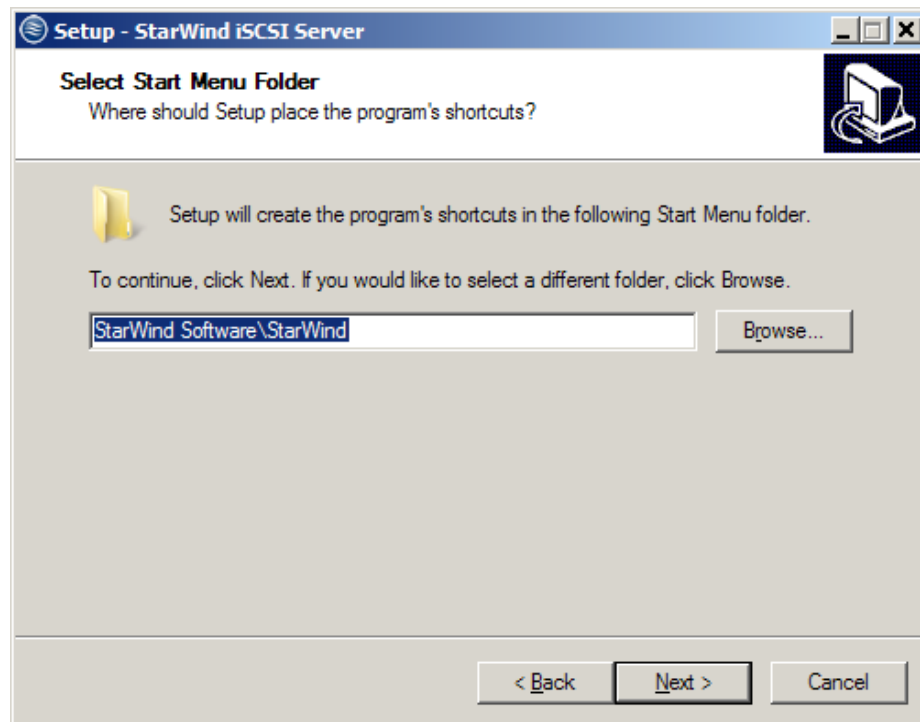
10. Select the **Full installation** type.

11. Click **Next** to continue.

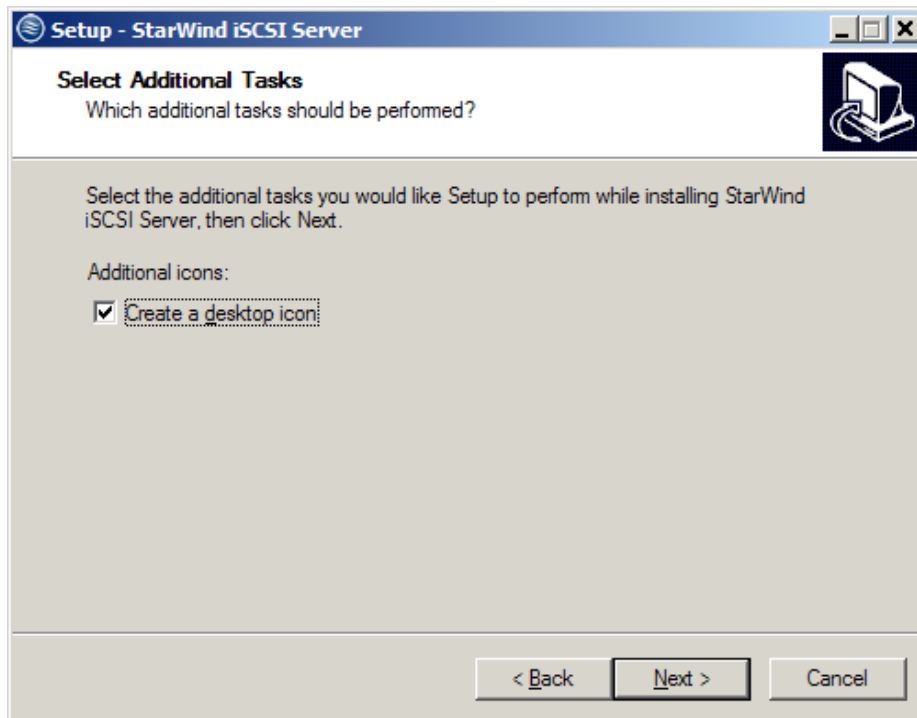


12. Select the **Start Menu** folder.

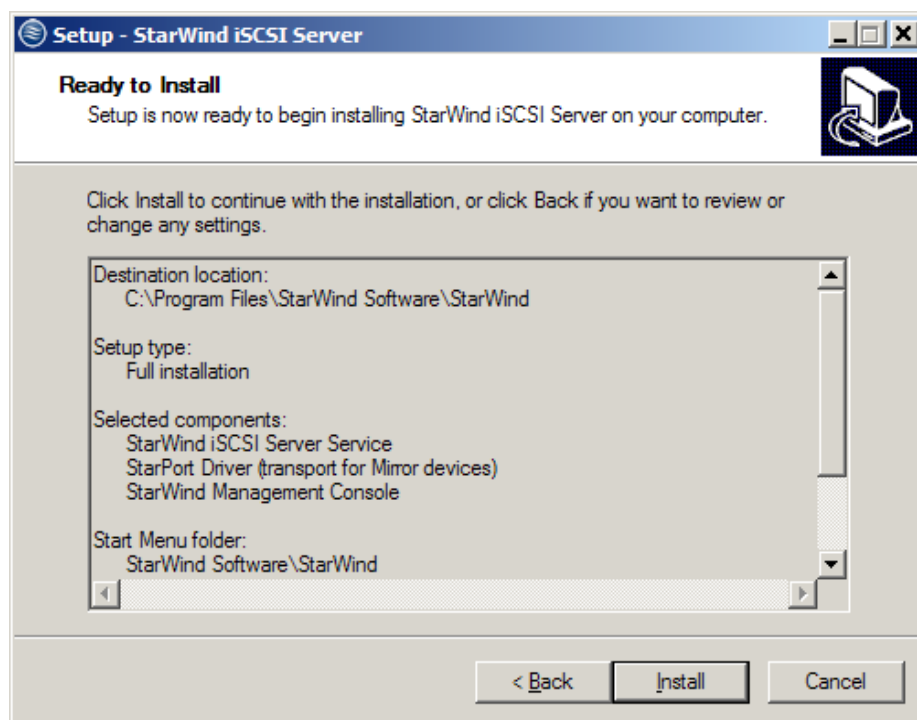
13. Click **Next** to continue.



14. Select the corresponding checkbox if you want to create a desktop icon.
15. Click **Next** to continue.



16. Make sure you have specified the correct settings. Click **Back** if you need to make any changes.
17. Click **Install** to continue.

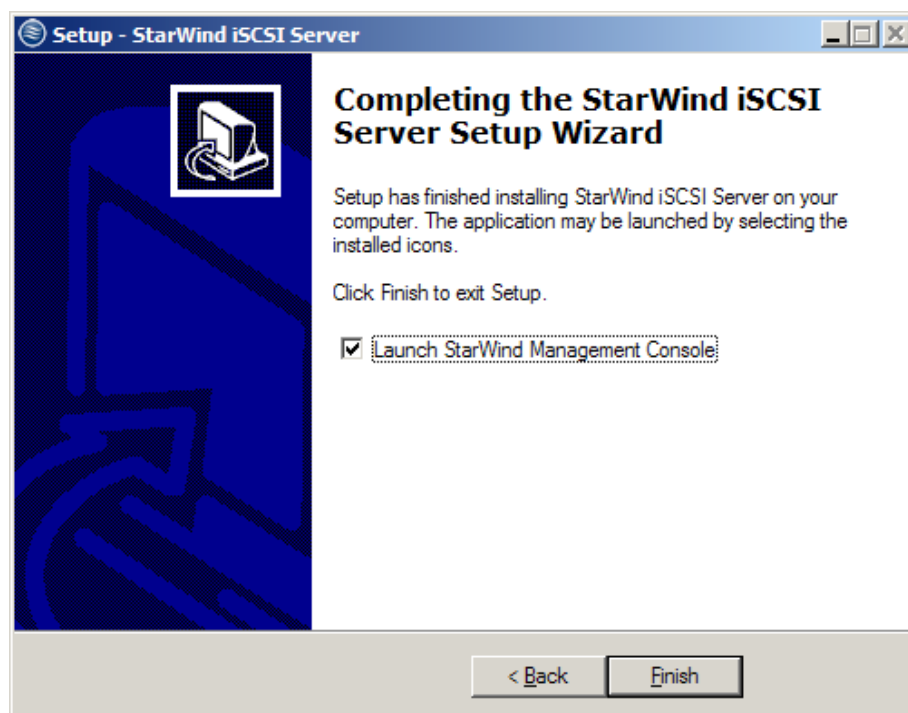


18. After the installation process is completed, you will be prompted to apply either a time-limited fully functional evaluation key, a FREE version license key, or a fully unlocked commercial license key that is supplied after the purchase of StarWind product. Select an appropriate option.

19. Click **Next** to continue.



20. Select the **Launch StarWind Management Console** checkbox, and click Finish to close the wizard.



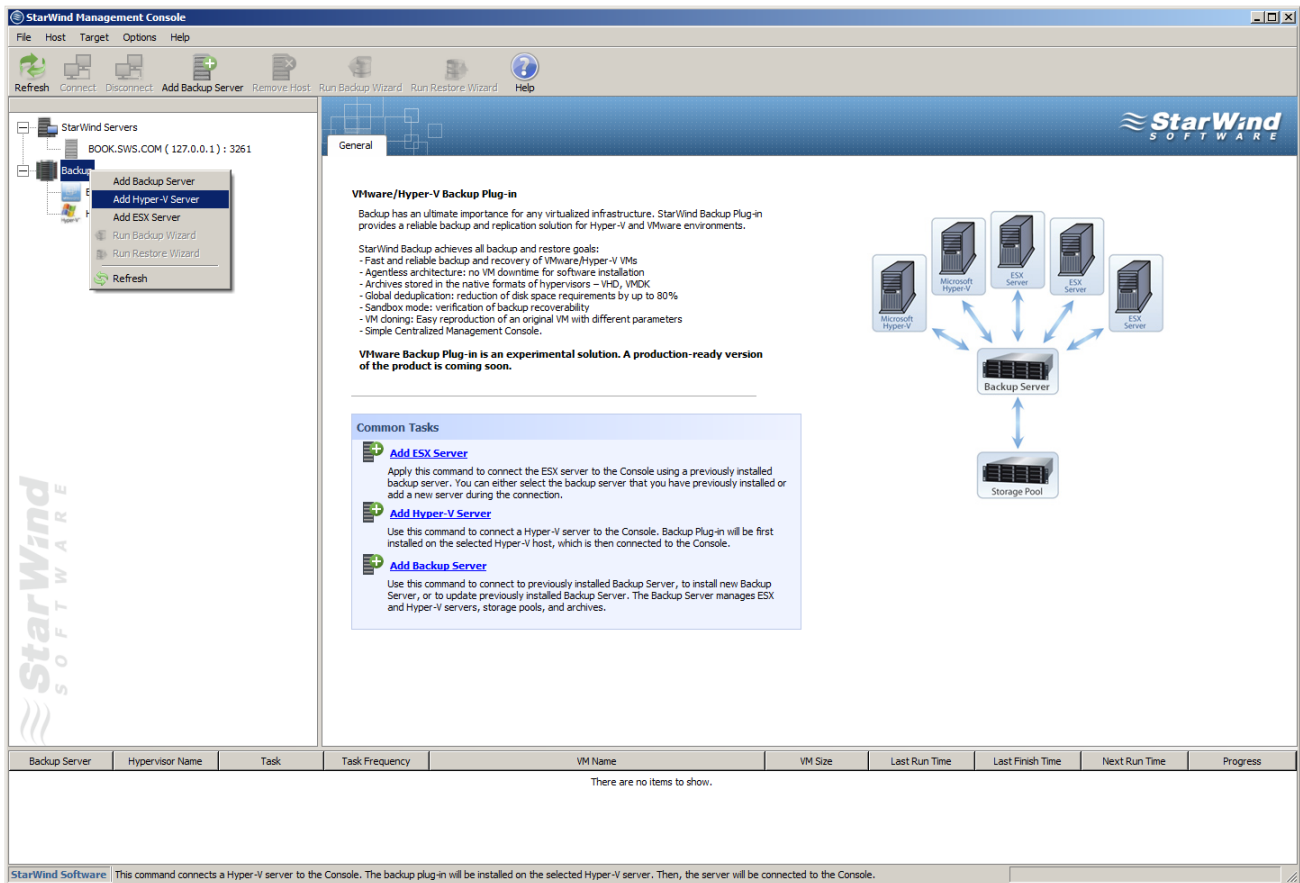
Note: The **Management Console** of Backup Plug-in is available as a part of StarWind Management Console that can be installed on any machine within the same subnetwork.


ADDING HYPER-V SERVERS

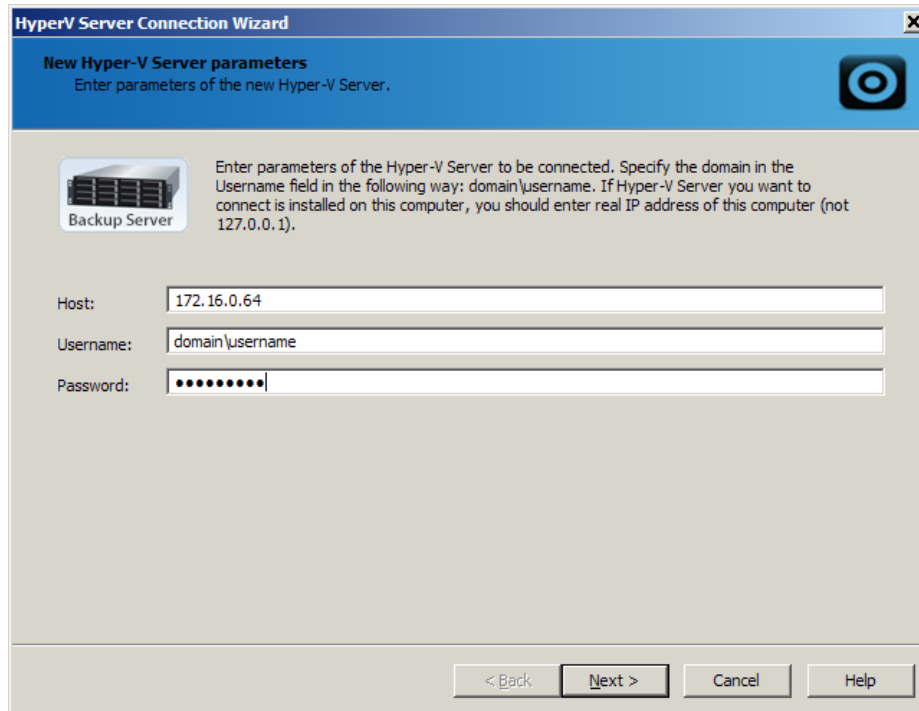
To add a Hyper-V server to a new backup server:

1. Run **Backup Plug-in Setup Wizard**:

- Click the Backup item from the Console tree and select Add Hyper-V Server from the Common Tasks.
- Right-click the Backup item from the Console tree and select Add Hyper-V Server from the shortcut menu.

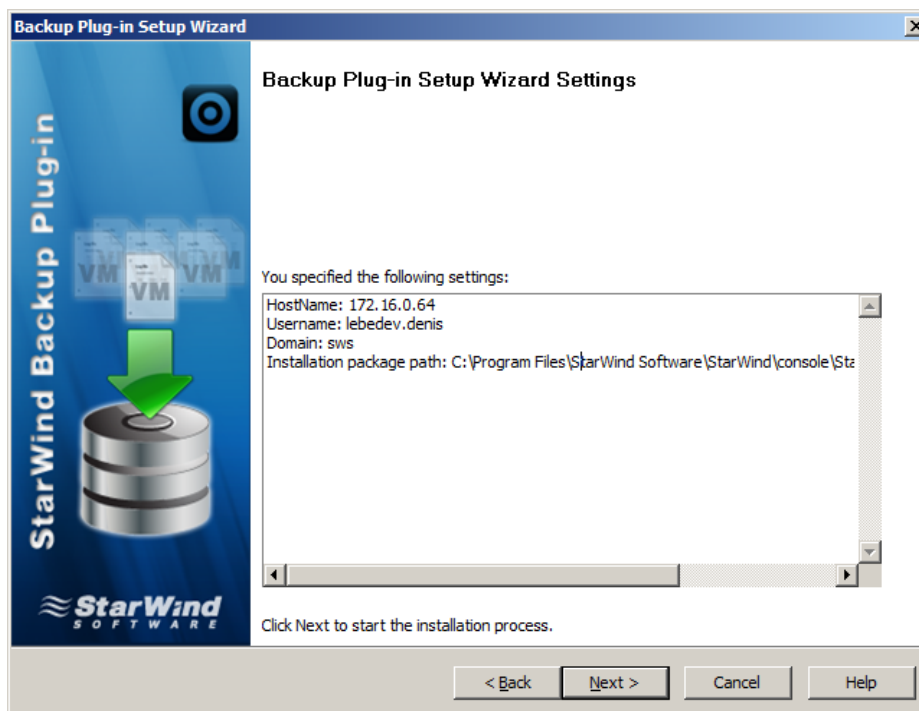


2. **Backup Setup Wizard** appears. Click **Next** to continue.
 3. Specify IP-address, user name, and password of a Hyper-V server in the corresponding text fields.
-  **Note:** Specify the domain in the **Username** text field in the following way: domain\username.
4. Click **Next** to continue.



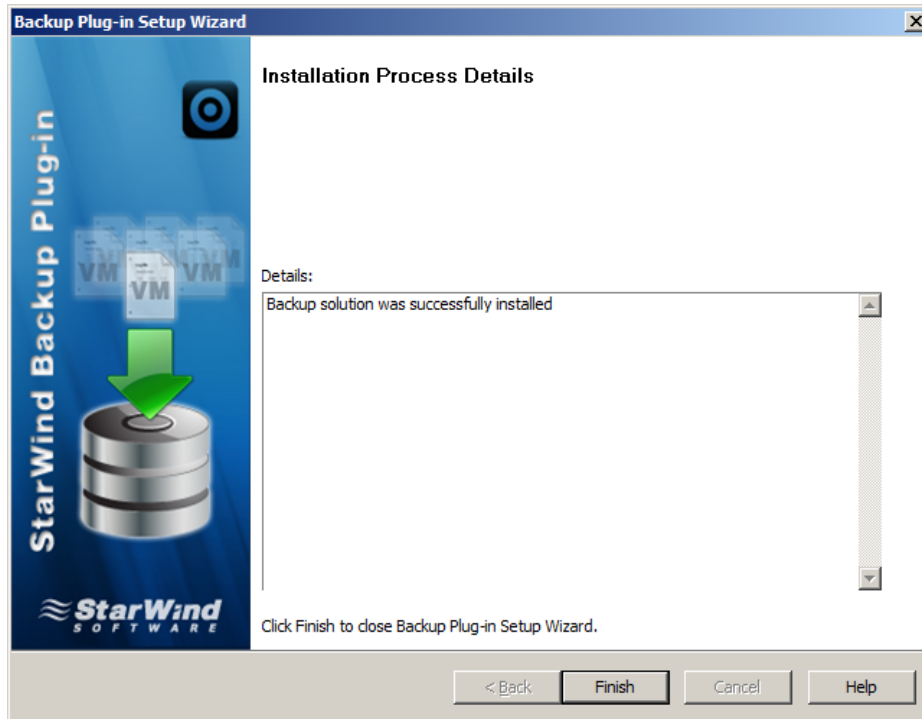
The screenshot shows the "HyperV Server Connection Wizard" dialog box. The title bar reads "HyperV Server Connection Wizard". The main heading is "New Hyper-V Server parameters" with the subtitle "Enter parameters of the new Hyper-V Server." Below this is a "Backup Server" icon and a text box containing instructions: "Enter parameters of the Hyper-V Server to be connected. Specify the domain in the Username field in the following way: domain\username. If Hyper-V Server you want to connect is installed on this computer, you should enter real IP address of this computer (not 127.0.0.1)." There are three input fields: "Host:" with the value "172.16.0.64", "Username:" with the value "domain\username", and "Password:" with a masked password of seven dots. At the bottom, there are four buttons: "< Back", "Next >", "Cancel", and "Help".

5. Check installation settings. Click **Back** to make any changes. Click **Next** to start the installation process.



The screenshot shows the "Backup Plug-in Setup Wizard" dialog box. The title bar reads "Backup Plug-in Setup Wizard". The main heading is "Backup Plug-in Setup Wizard Settings". On the left side, there is a vertical banner with the text "StarWind Backup Plug-in" and an illustration of a server stack with a green arrow pointing down to a disk. Below the banner is the "StarWind SOFTWARE" logo. The main area contains a text box with the heading "You specified the following settings:" and a list of settings: "HostName: 172.16.0.64", "Username: lebedev.denis", "Domain: sws", and "Installation package path: C:\Program Files\StarWind Software\StarWind\console\Stz". At the bottom, there is a text box with the instruction "Click Next to start the installation process." and four buttons: "< Back", "Next >", "Cancel", and "Help".

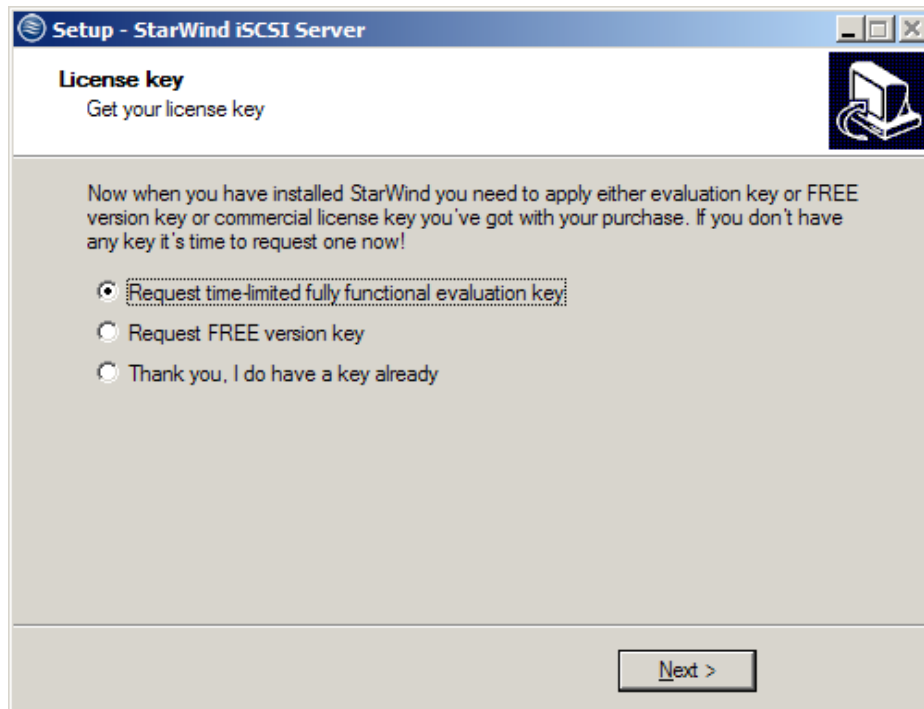
6. Click **Finish** to close the wizard.



LICENSING AND REGISTRATION

To register StarWind Management Console:

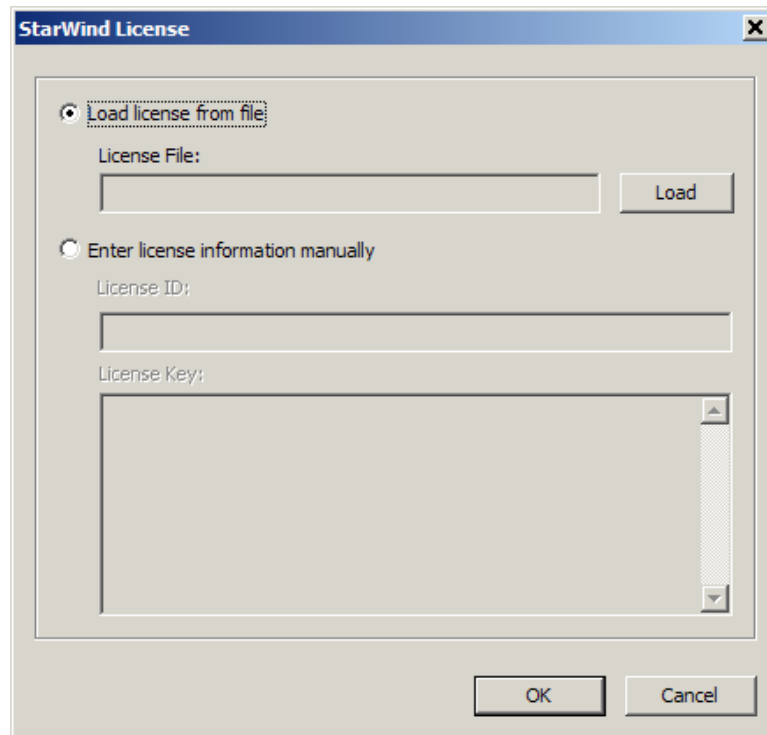
1. Generate a license key using the following link: <http://www.starwindsoftware.com/registration-iscsi-san>
2. Save the license file locally on your computer.
3. After the installation of **StarWind Management Console**, you will be prompted to apply either a time-limited fully functional evaluation key, a FREE version key, or a fully unlocked commercial license key that is supplied with the acquired StarWind product. Select an appropriate option during the installation process.



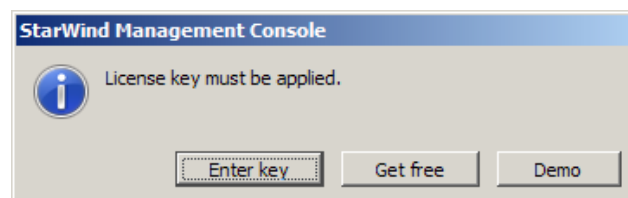
4. As you launch **StarWind Console** for the first time, you will need to enter your license key. Click **Apply key** if you already have it.



5. Click **Load** to navigate to your license file or enter appropriate information manually.
6. Click **OK**.

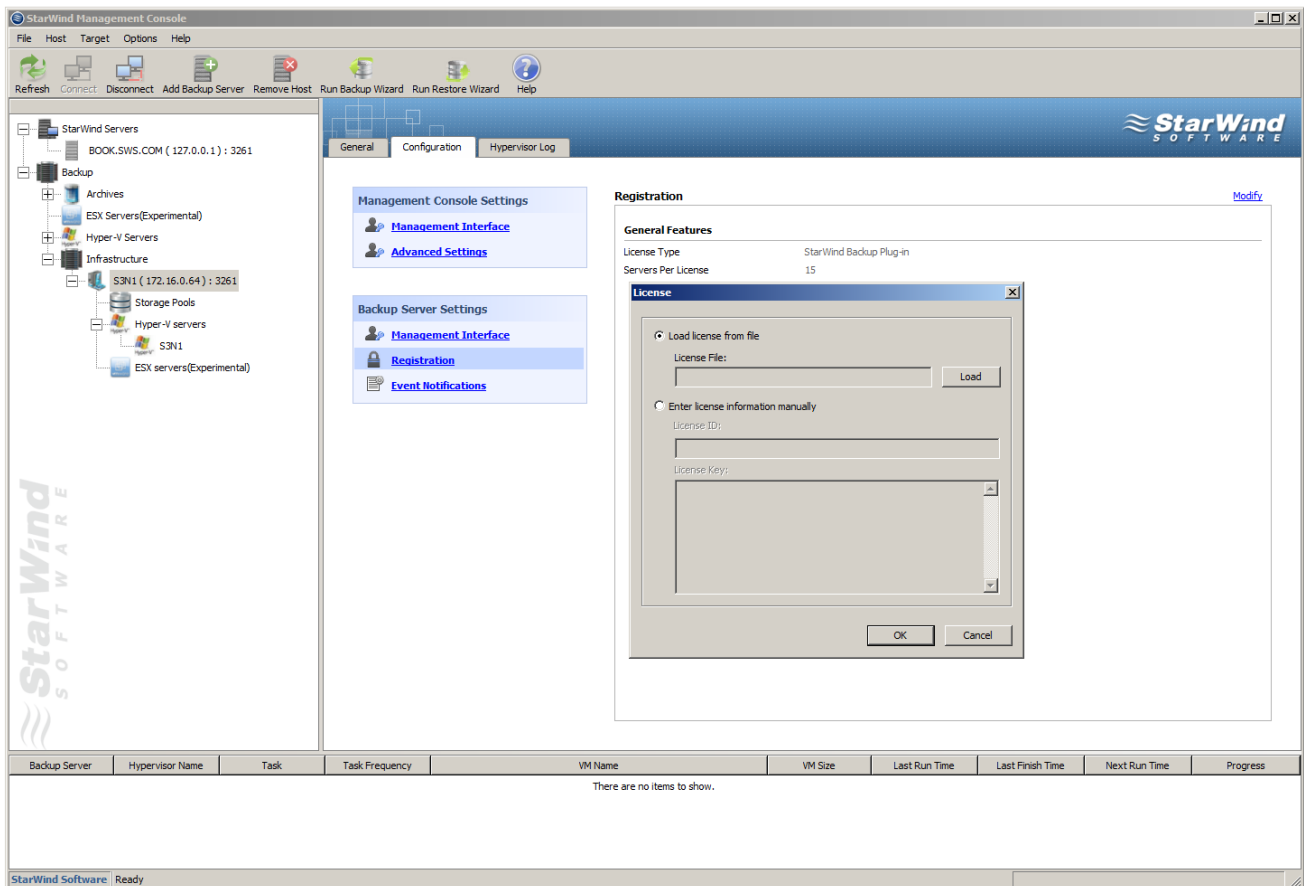


To register Backup Plug-in, follow the registration procedure described for **StarWind Management Console**. You will not be able to connect to the Backup Server before you register VMware Backup Plug-in. The following message will appear every time you try to do so.



Alternative way to register your backup license:

1. Select a backup server on the Console tree.
2. Click the **Configuration** tab.
3. Click the **Registration** item.
4. Click **Modify**.
5. Click **Load** to navigate to your license file or enter appropriate information manually.
6. Click **OK**.

**ADDITIONAL INFORMATION ON HYPER-V BACKUP PLUG-IN**

Now as you have installed the product and activated a license key, you can immediately start using Hyper-V Backup Plug-in. Please refer to Hyper-V Backup User Guide for the detailed information on using the software.