

# **StarWind iSCSI SAN Software: Virtual Tape Library (Part 4)**

[www.starwindsoftware.com](http://www.starwindsoftware.com)

Copyright © StarWind Software 2008-2011. All rights reserved.

## COPYRIGHT

Copyright © StarWind Software 2008-2011. All rights reserved. No part of this publication may be reproduced, stored in a retrieval system, or transmitted in any form or by any means, electronic, mechanical, photocopying, recording or otherwise, without the prior written consent of StarWind Software.

## TRADEMARKS

“StarWind”, “StarWind Software” and the StarWind and the StarWind Software logos are trademarks of StarWind Software which may be registered in some jurisdictions. All other trademarks are owned by their respective owners.

## CHANGES

The material in this document is for information only and is subject to change without notice. While reasonable efforts have been made in the preparation of this document to assure its accuracy, StarWind Software assumes no liability resulting from errors or omissions in this document, or from the use of the information contained herein. StarWind Software reserves the right to make changes in the product design without reservation and without notification to its users.

## TECHNICAL SUPPORT AND SERVICES

If you have questions about installing or using this software, check this and other documents first - you will find answers to most of your questions here or there. If you need further assistance, please contact us.

## Table of Contents

<b>Introduction.....</b>	<b>4</b>
<b>Configuring StarWind Server.....</b>	<b>6</b>
<b>Data Protection Manager.....</b>	<b>7</b>
<b>Preparing the Media .....</b>	<b>7</b>
<b>Installing DPM agent .....</b>	<b>16</b>
<b>Performing backup .....</b>	<b>24</b>
<b>Restoring data .....</b>	<b>36</b>
<b>Conclusion.....</b>	<b>43</b>

## Guide

### Introduction

StarWind Software Inc. StarWind allows you to create Virtual Tape Devices and Tape Libraries based on hard disk storage. A Virtual Tape Device is a special hard drive file that's been made available to your network. It is normally used for file backup and recovery purposes.

By enabling virtualized hard drive space as a Tape Device, Backup Managers are able to integrate VTLs with existing backup software and current backup and recovery processes and procedures. It also has the "backup to disk" functionality that many older backup software solutions do not support. This prevents unnecessary and costly backup software upgrades.

Starwinds VTL solution allows Backup Managers to store backup data on inexpensive PATA and SATA hard drive systems, instead of having to use expensive tapes and tape drive systems. And by backing up your data to disk instead of tapes, VTLs will most often increase performance for both backup and restore operations. Scalability is increased by using RAID array enclosures to host and store your VTLs, by allowing adding more hard drives and/or enclosures to increase overall storage capacity.

This document provides step-by-step instructions on using **StarWind** virtual tape devices.

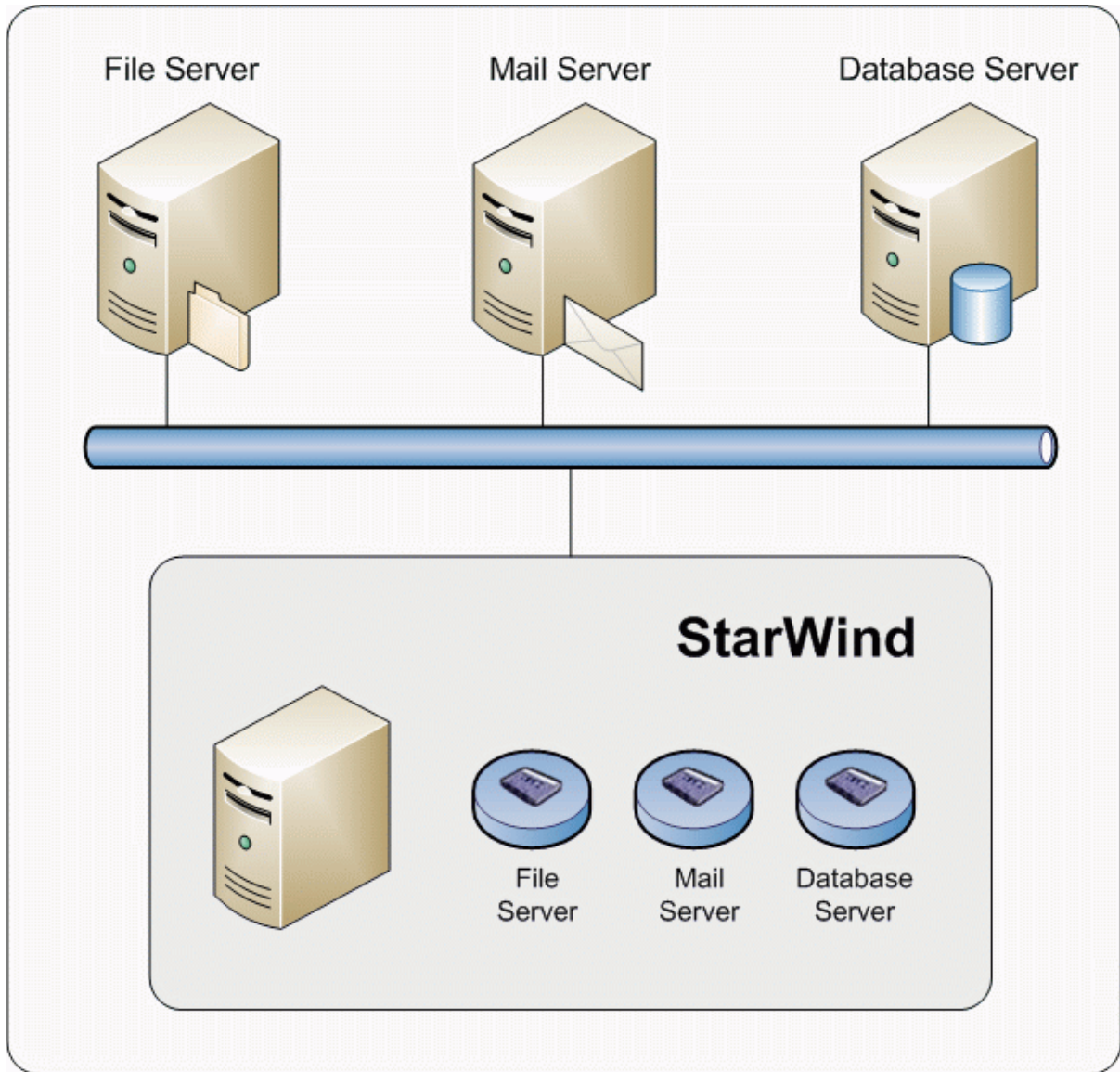


Figure 1. StarWind provides virtual tape devices

## **Configuring StarWind Server**

### **Preparing Virtual Tape Device**

Please refer to **Preparing Virtual Tape Device** section of **StarWind iSCSI Target for Microsoft Windows : Virtual Tape Library (Part 1)** guide.

### **Install StarWind VTL Tape Driver**

Please refer to **Install StarWind VTL Tape Driver** section of **StarWind iSCSI Target for Microsoft Windows : Virtual Tape Library (Part 1)** guide.

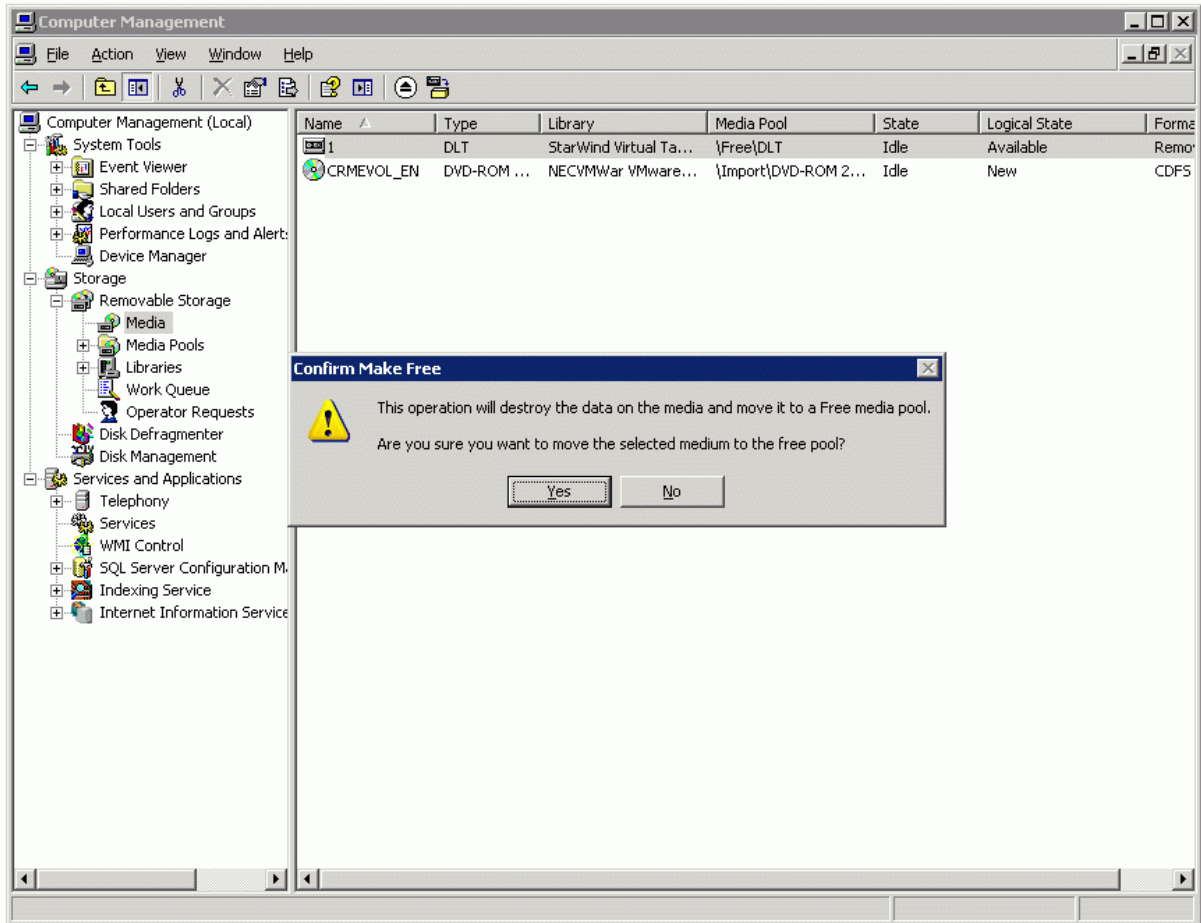
### **Connect the Target**

Please refer to **Connect the Target** section of **StarWind iSCSI Target for Microsoft Windows : Virtual Tape Library (Part 1)** guide.

## Data Protection Manager

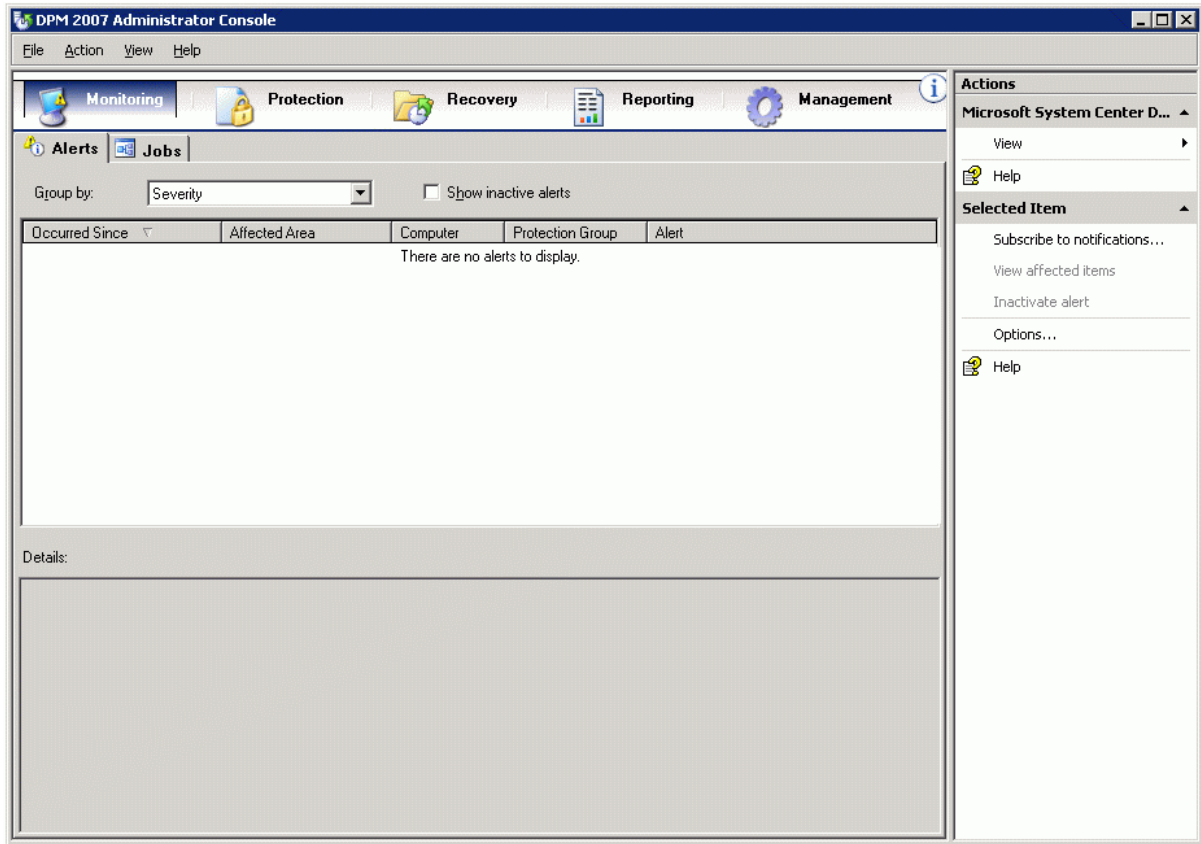
### Preparing the Media

Launch the **Computer Management**. Select **Storage - Removable Storage - Media**. Select **StarWind Virtual Tape** and launch **Action - Free**.



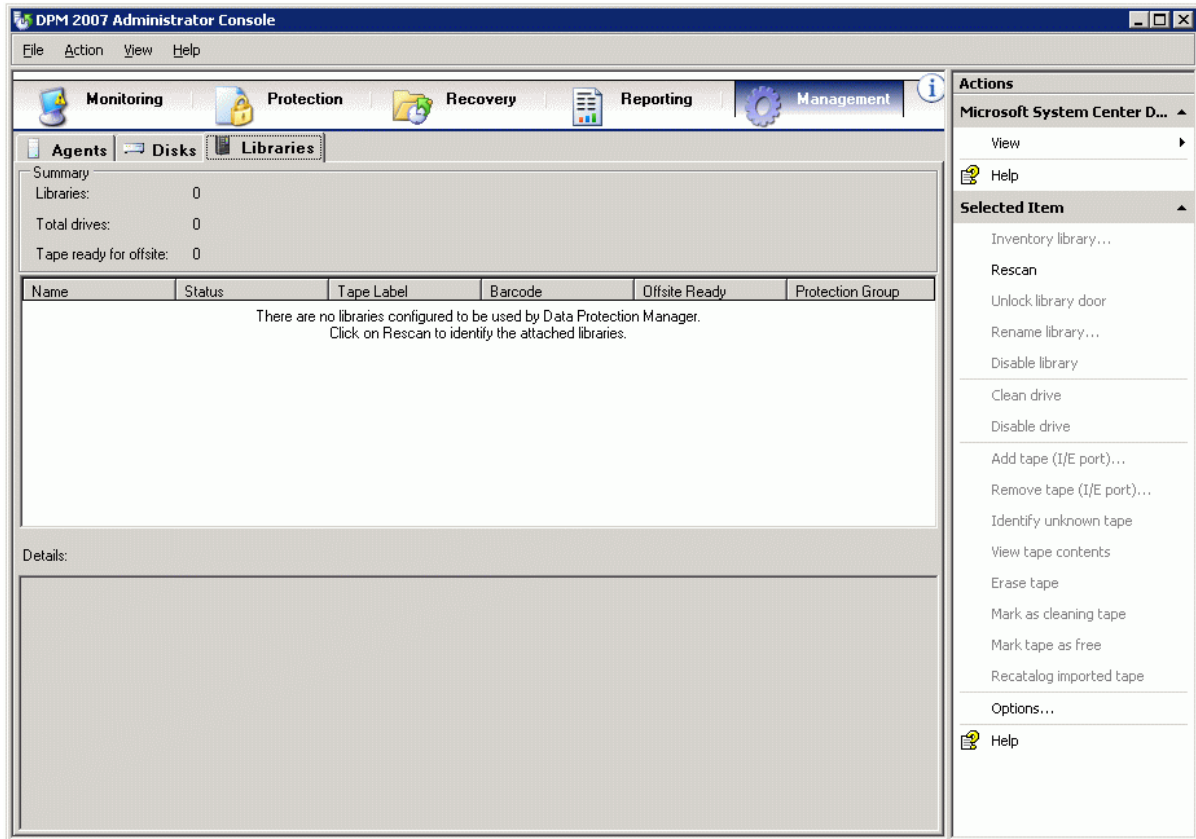
Click **Yes**.

Launch the **Microsoft System Center Data Protection Manager 2007**.

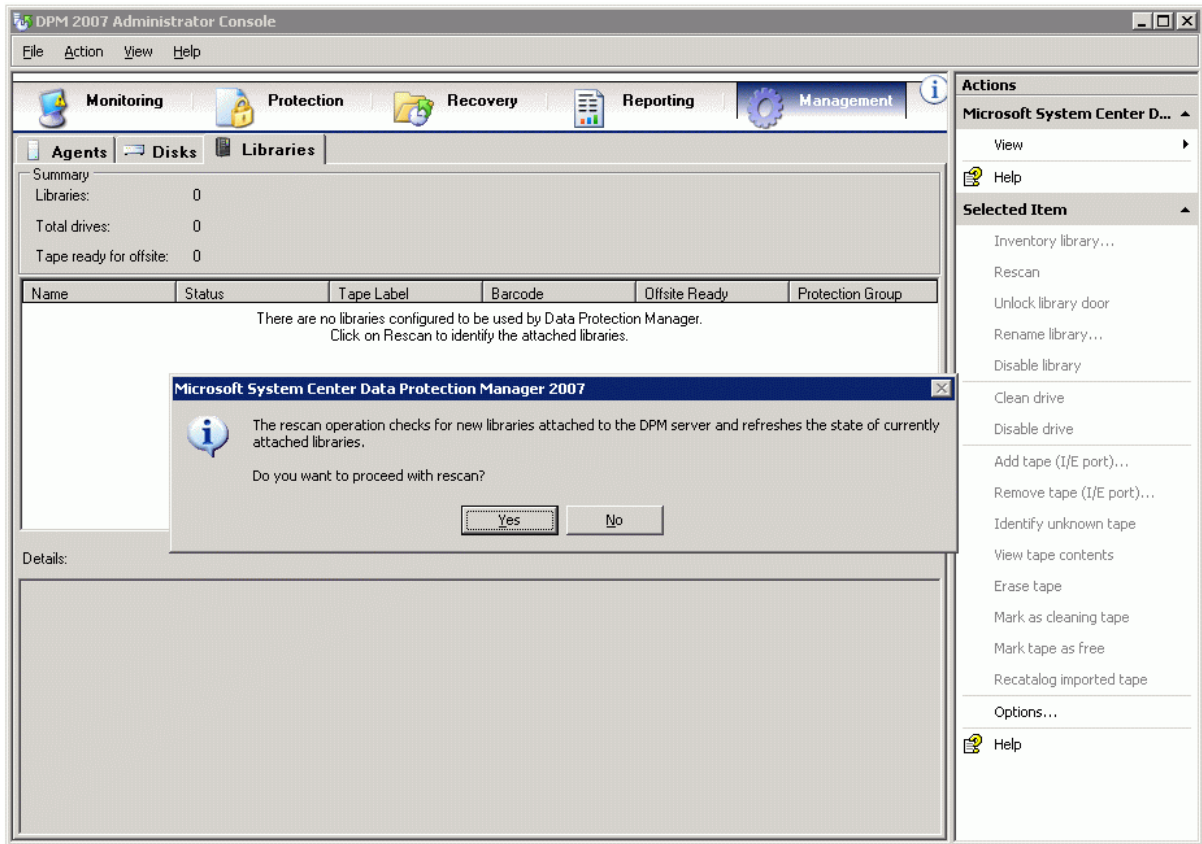


Click on **Management - Libraries**.

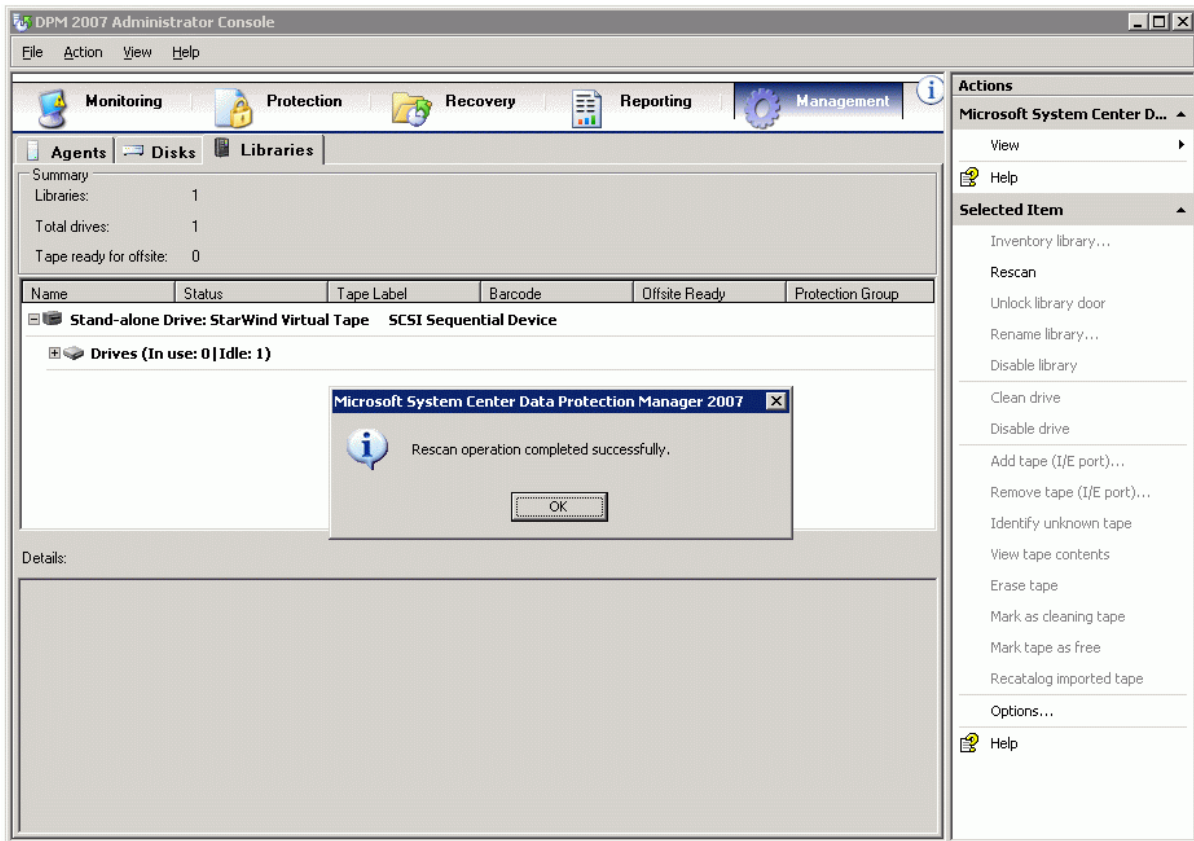
Click Rescan.



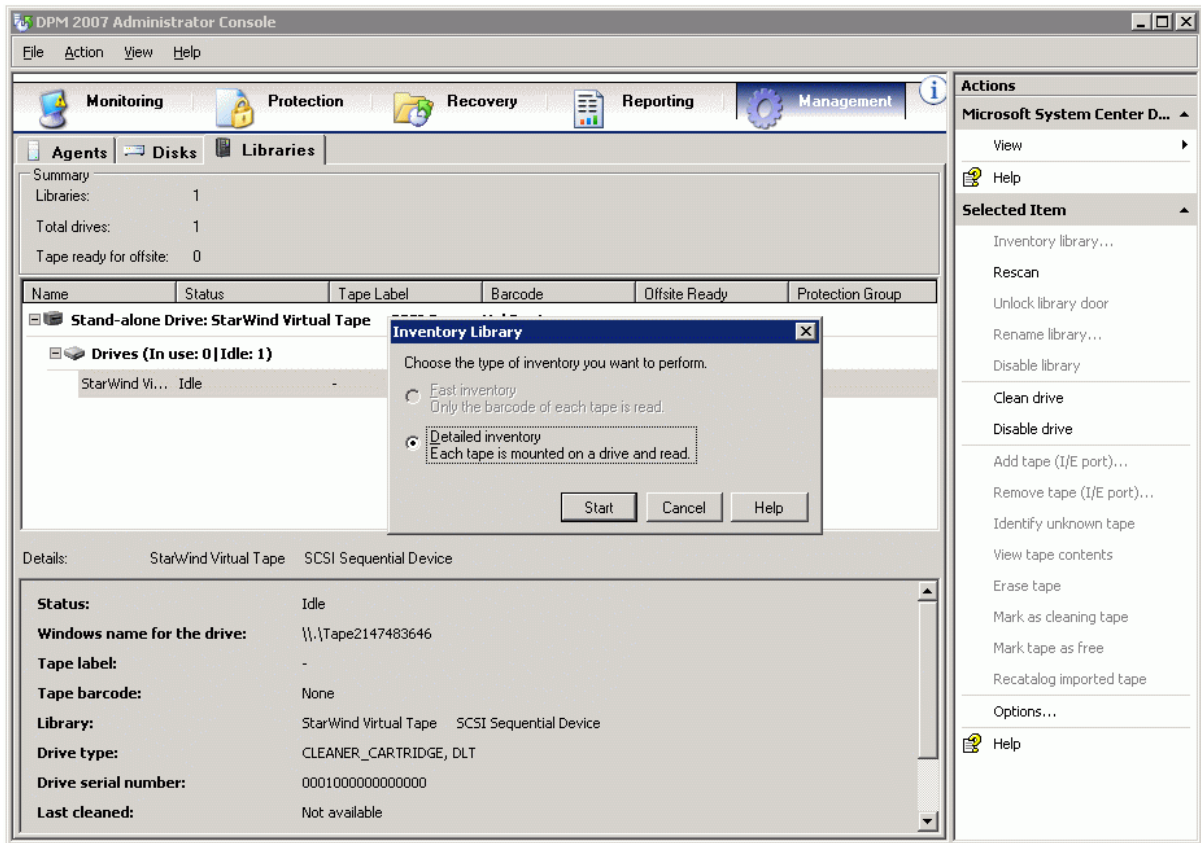
Click **Yes** to confirm rescan.



Click **OK** button.

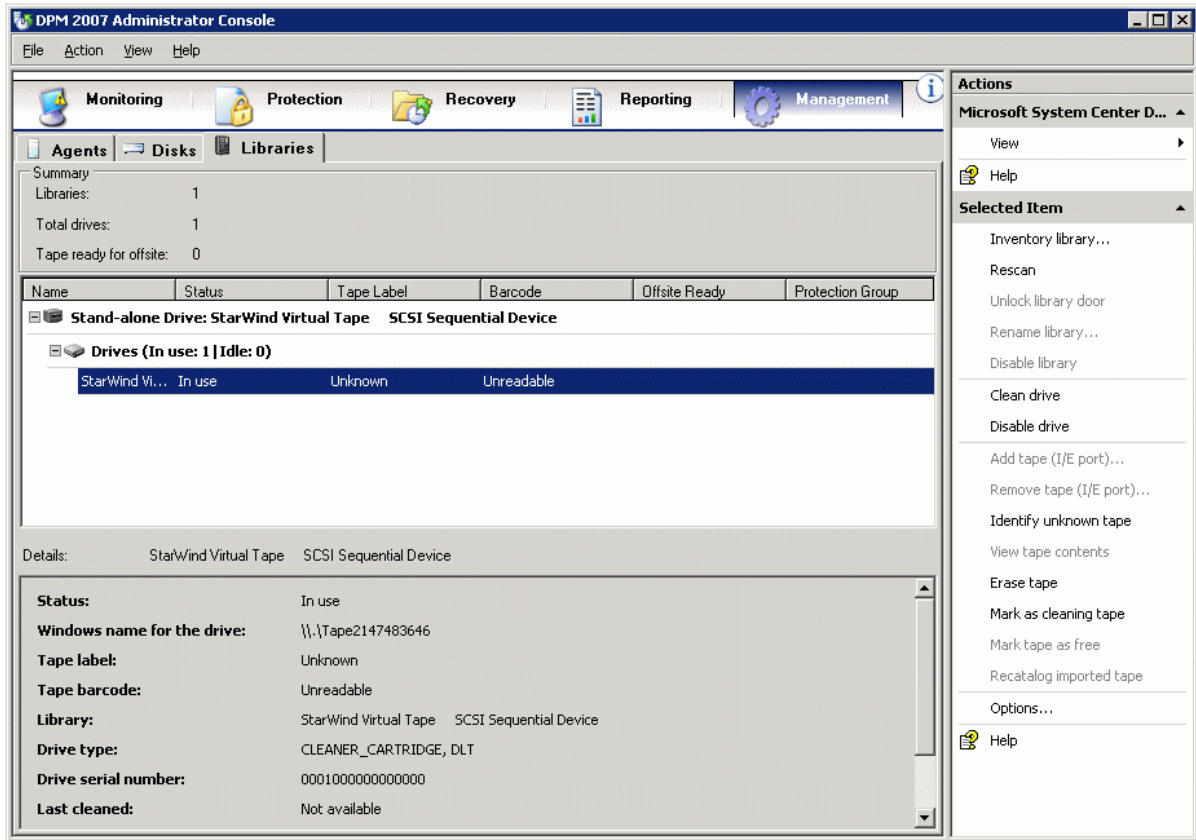


Click **Inventory library**.

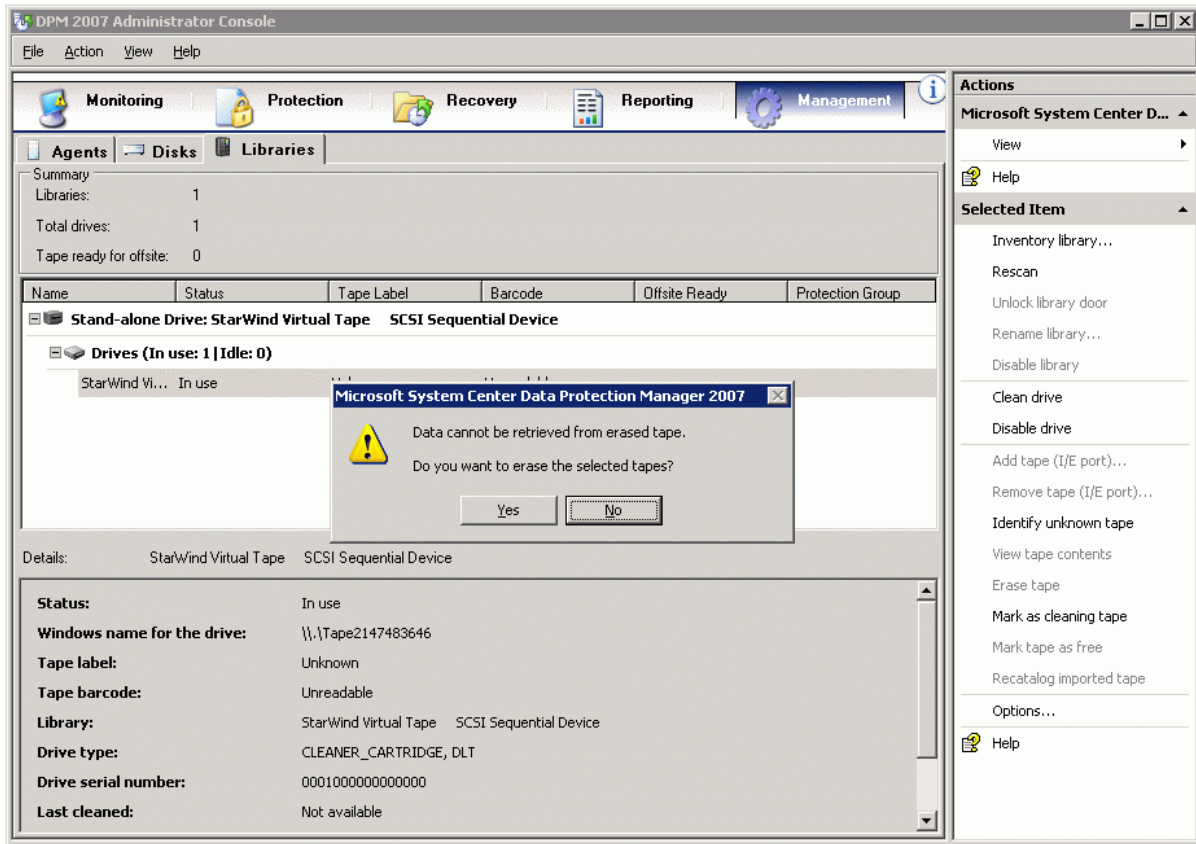


Click **Start**.

Click **Identify unknown tape**.

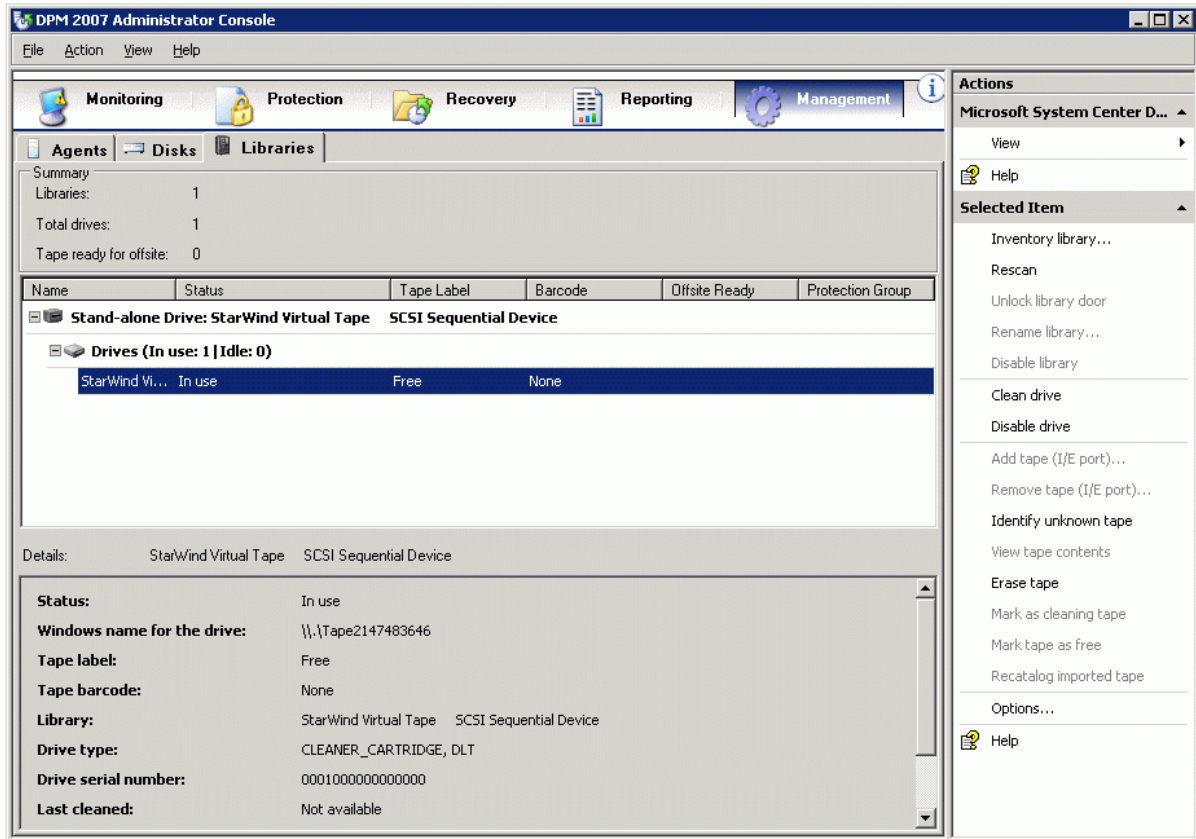


Click **Erase tape**.



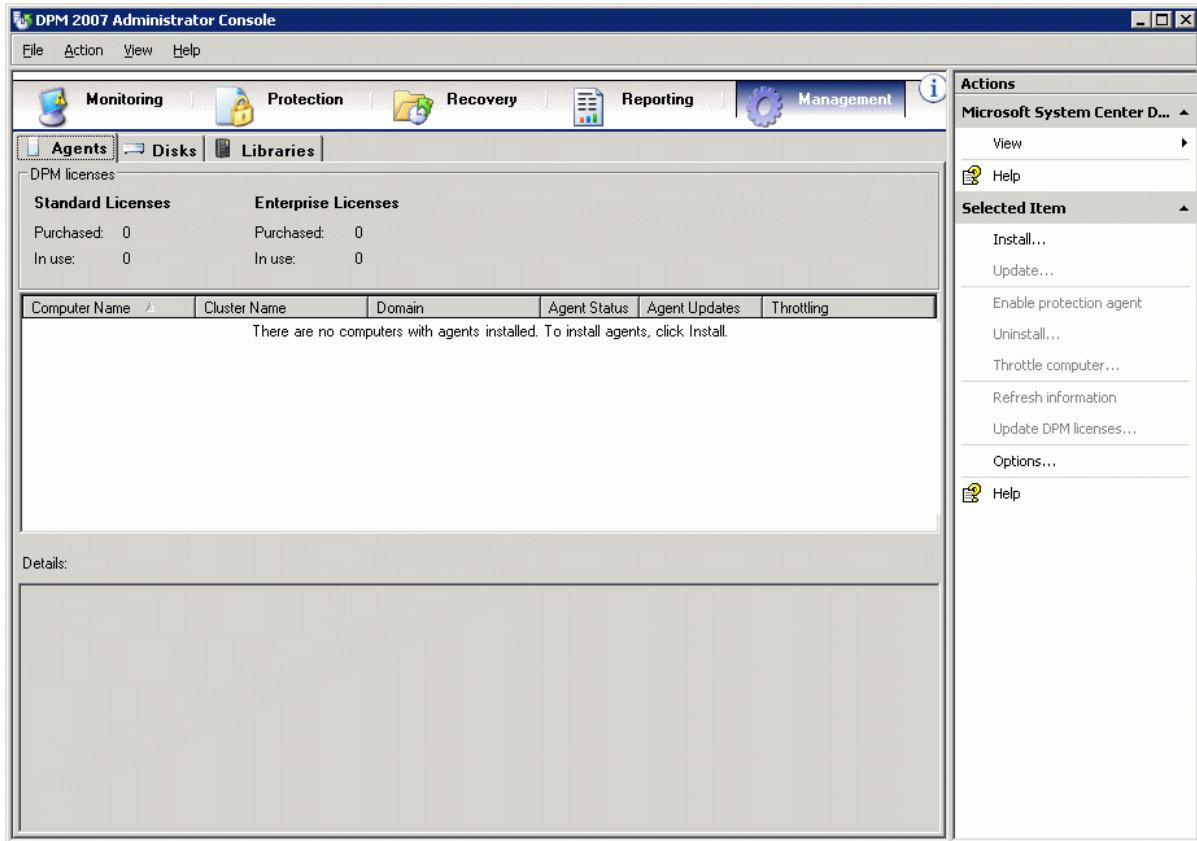
Click **Yes** to confirm erasing.

Tape device is ready to use.



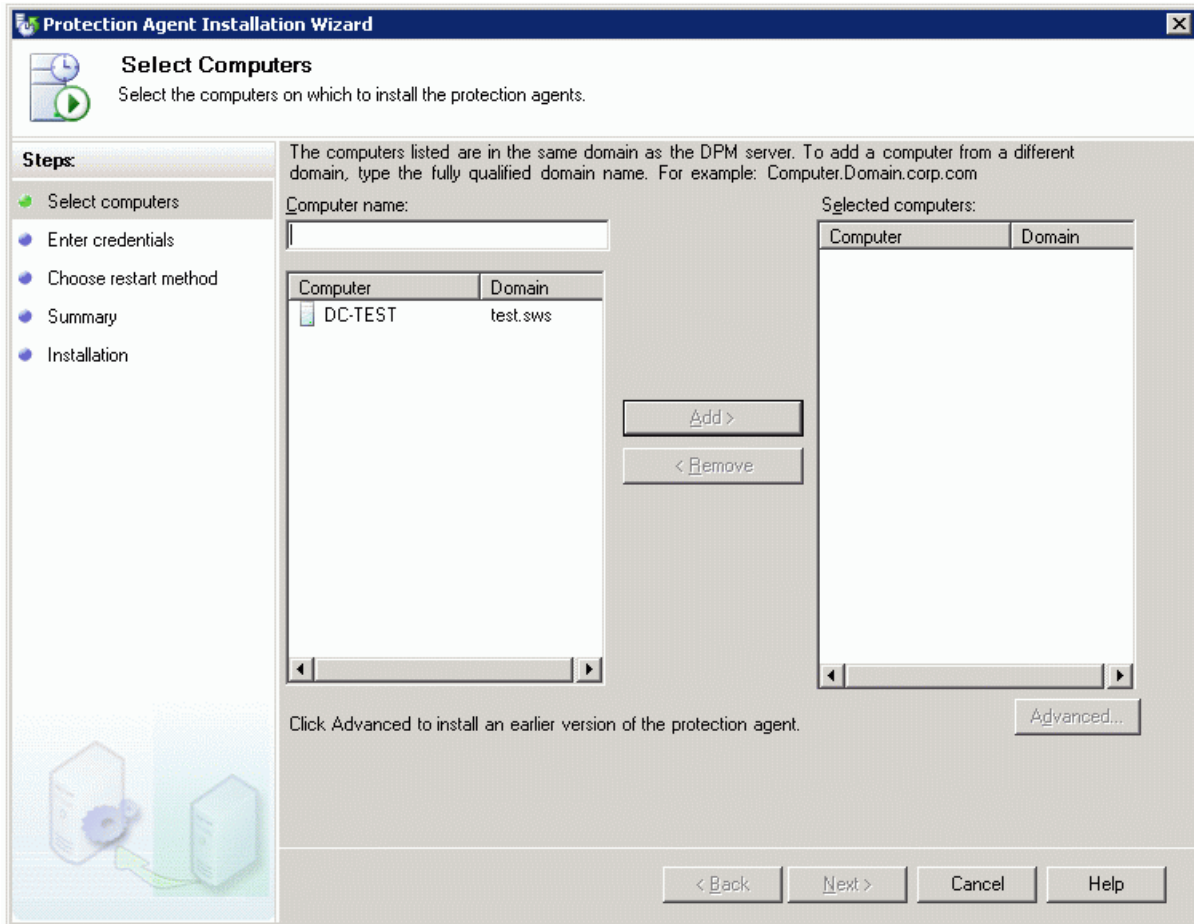
## Installing DPM agent

Launch the **Microsoft System Center Data Protection Manager 2007**. Click on **Management**.

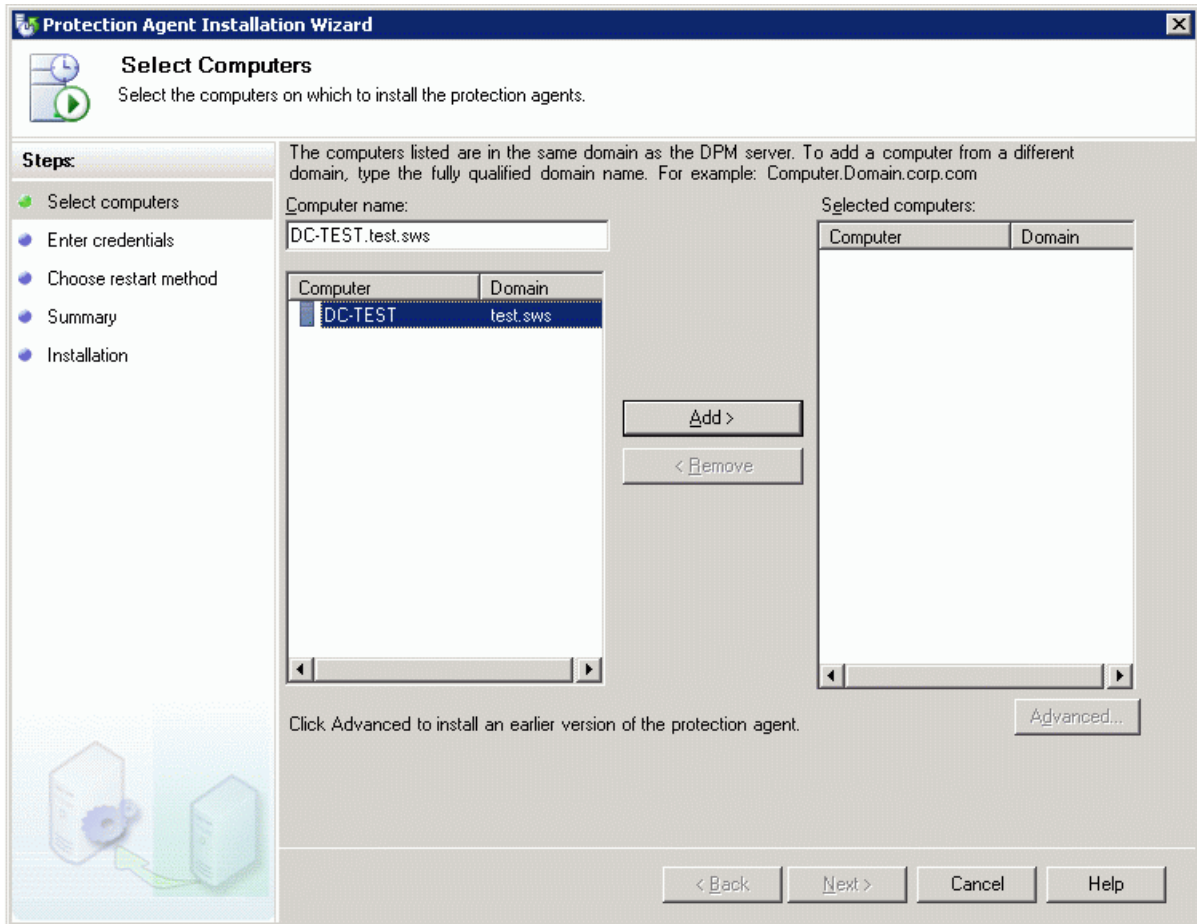


Click **Install...**

Installation Wizard will opens.

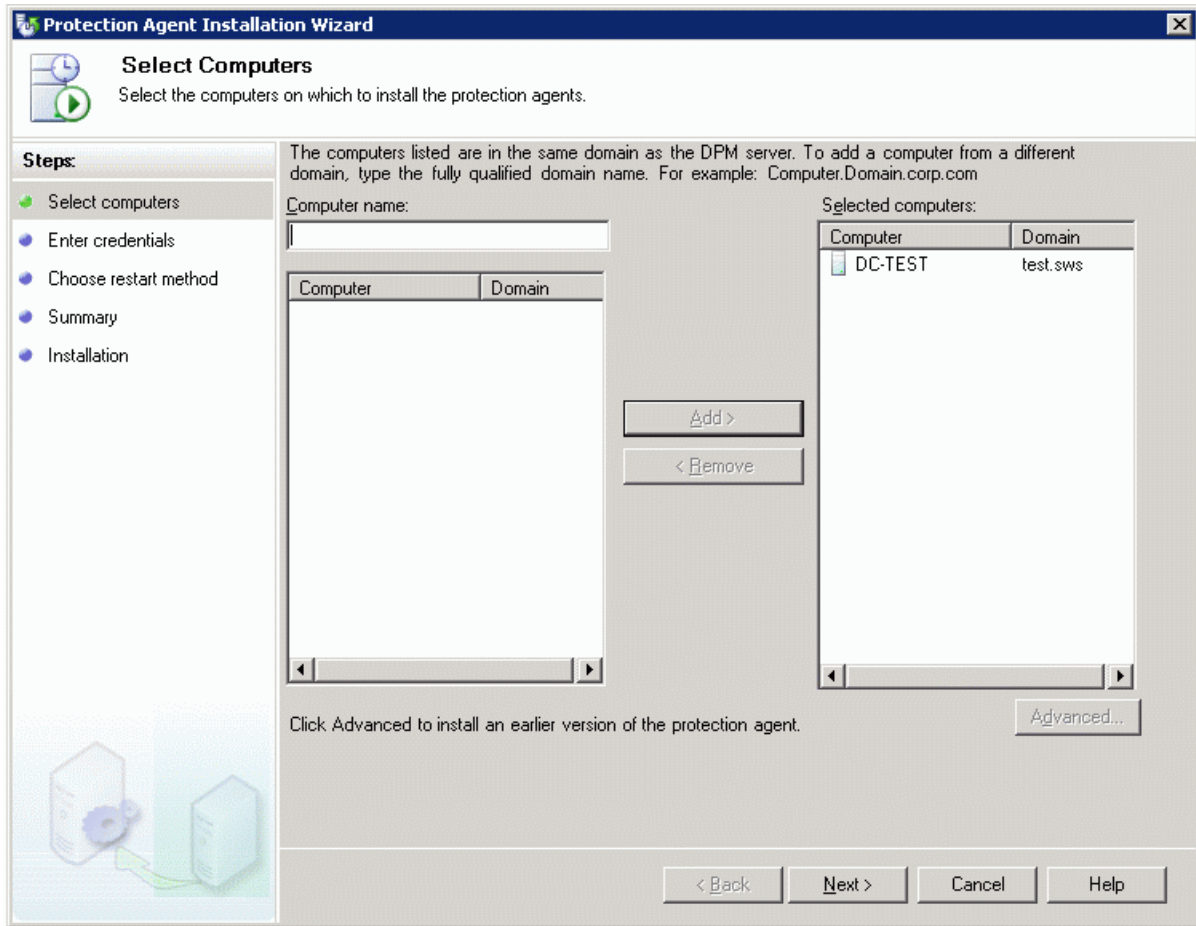


Select computer to protect.

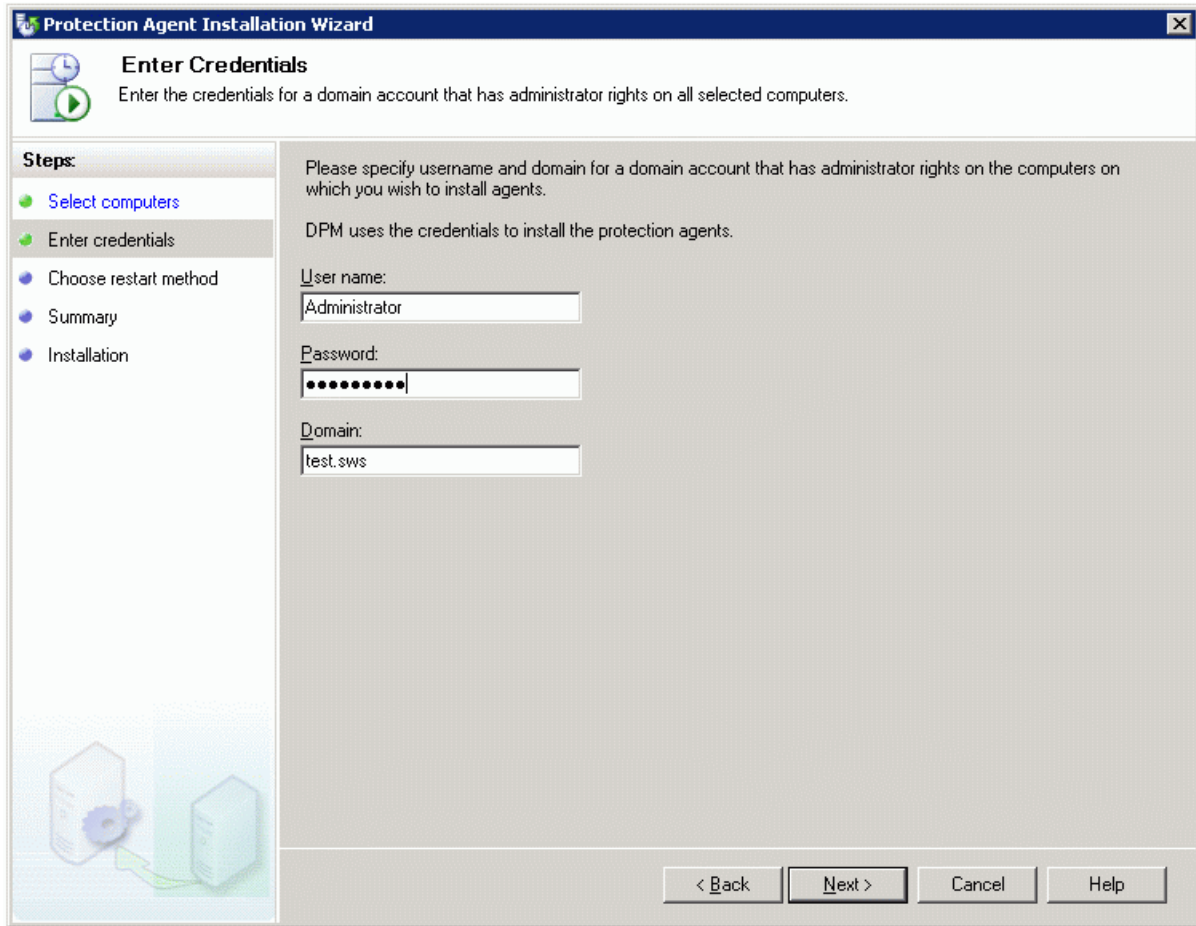


Click **Add**.

Click **Next**.

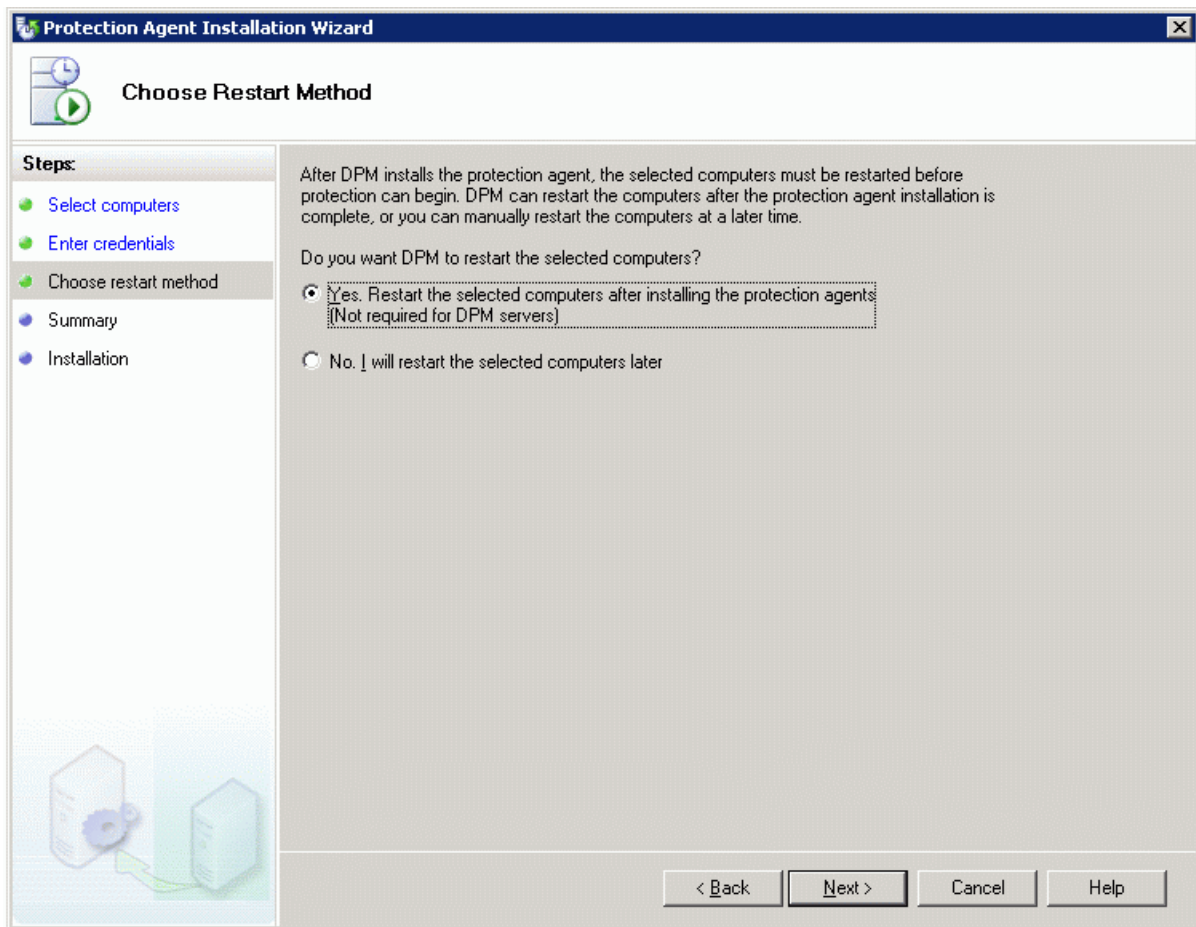


Enter "**User name**" and "**Password**" with administrative rights.



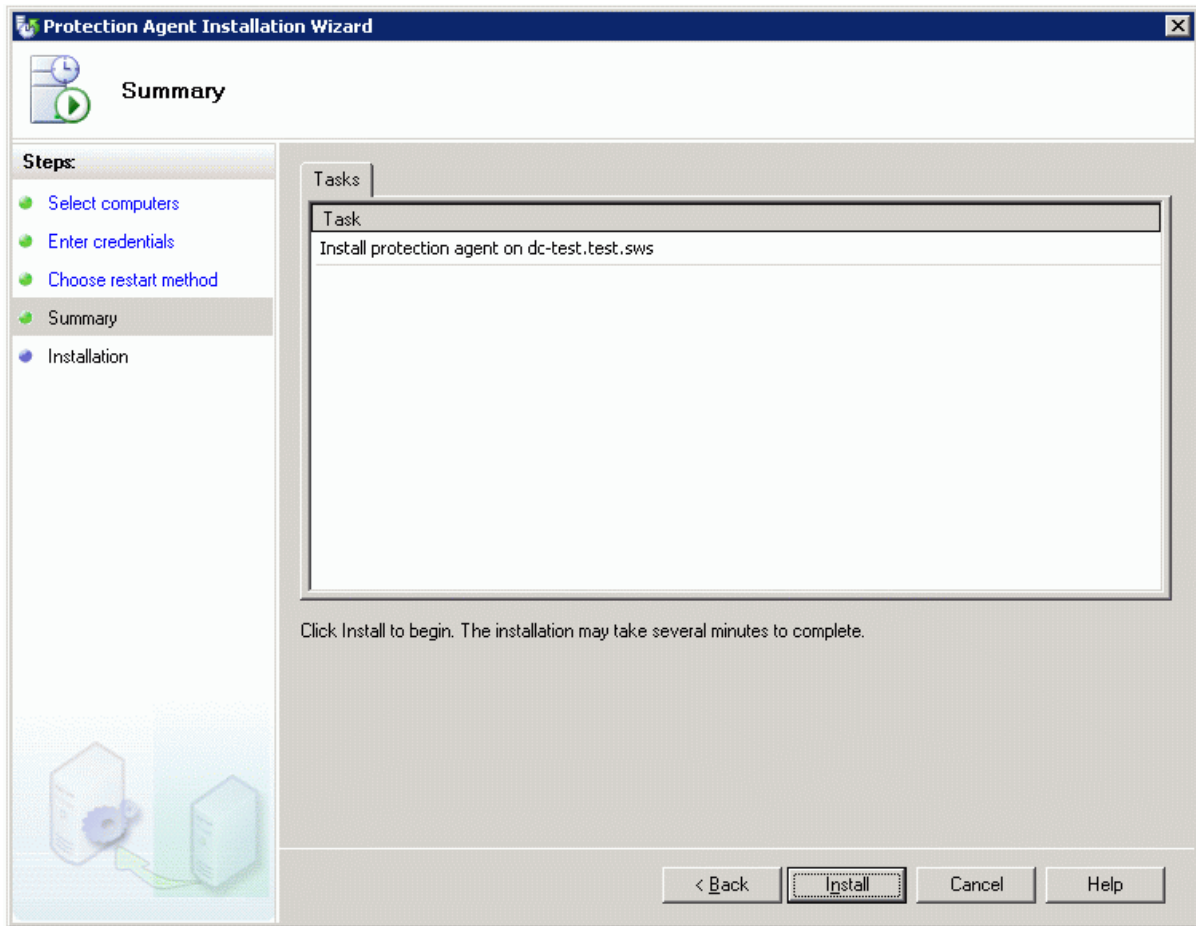
Click **Next**.

Select restart method.

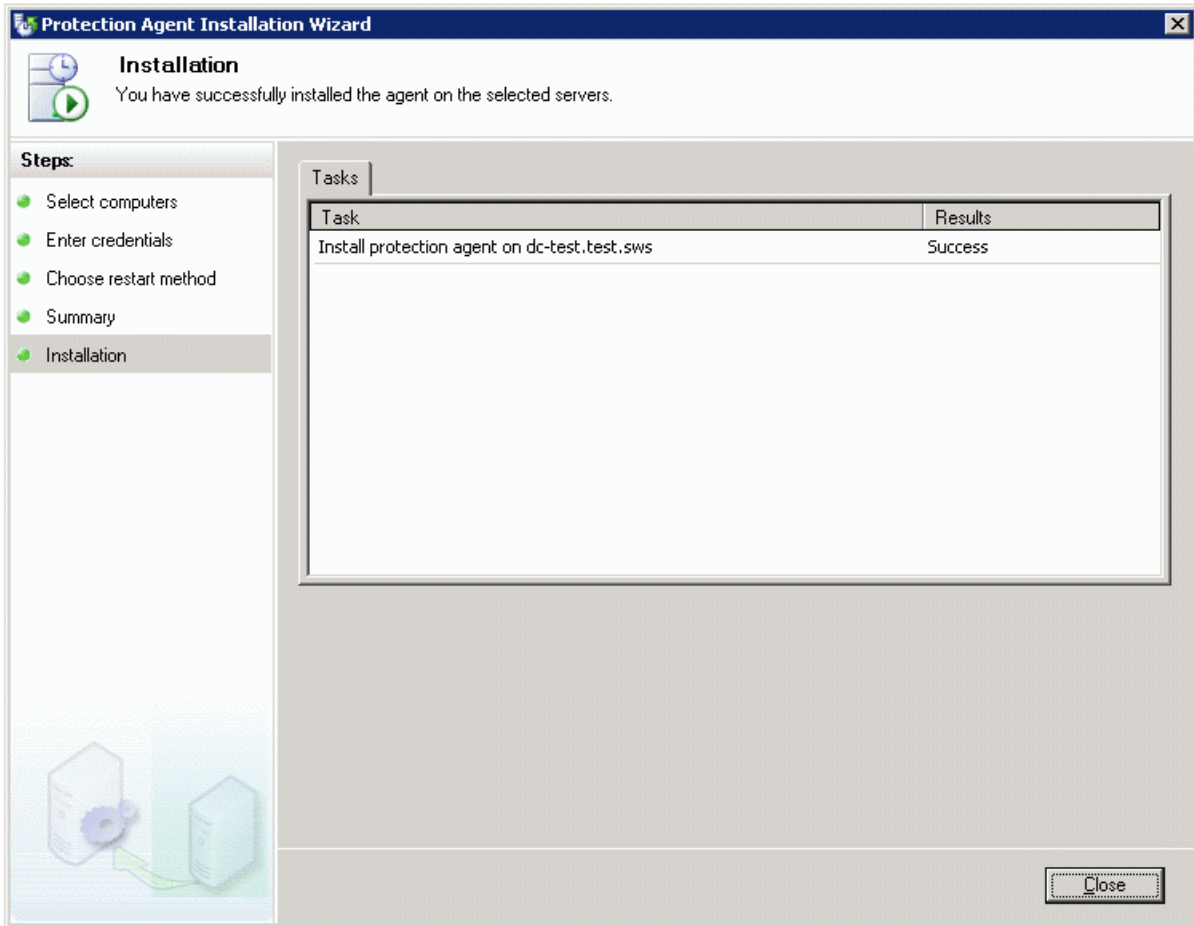


Click **Next**.

Click **Install**.

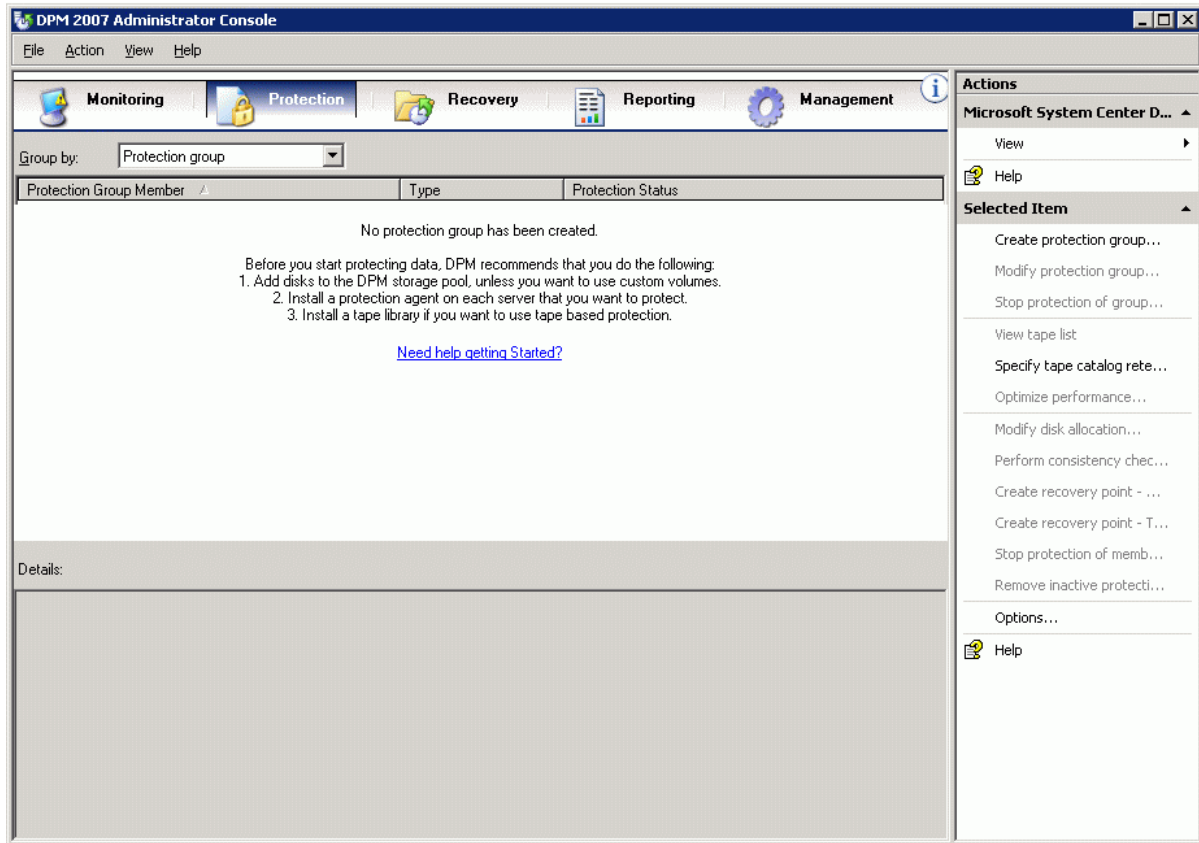


Click **Close** after finishing.



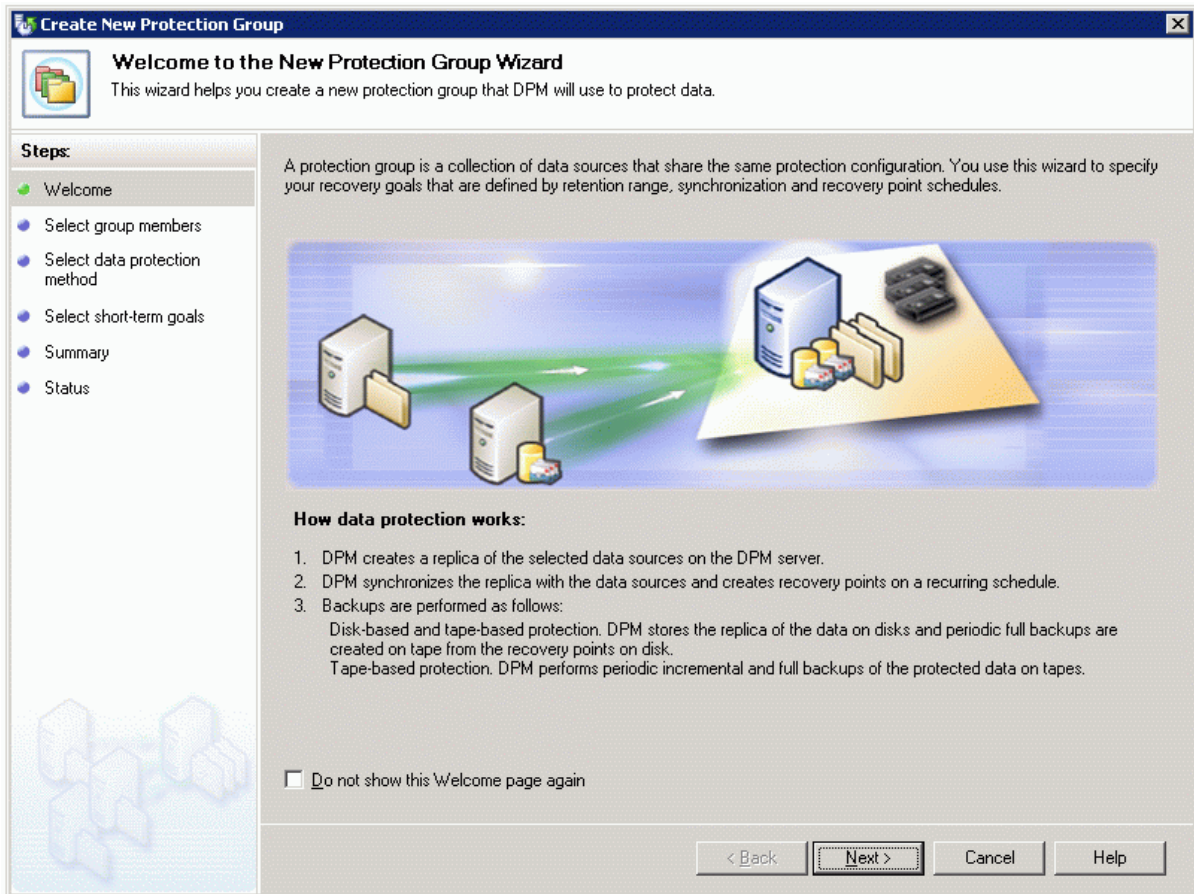
## Performing backup

Launch the **Microsoft System Center Data Protection Manager 2007**. Click on **Protection**.



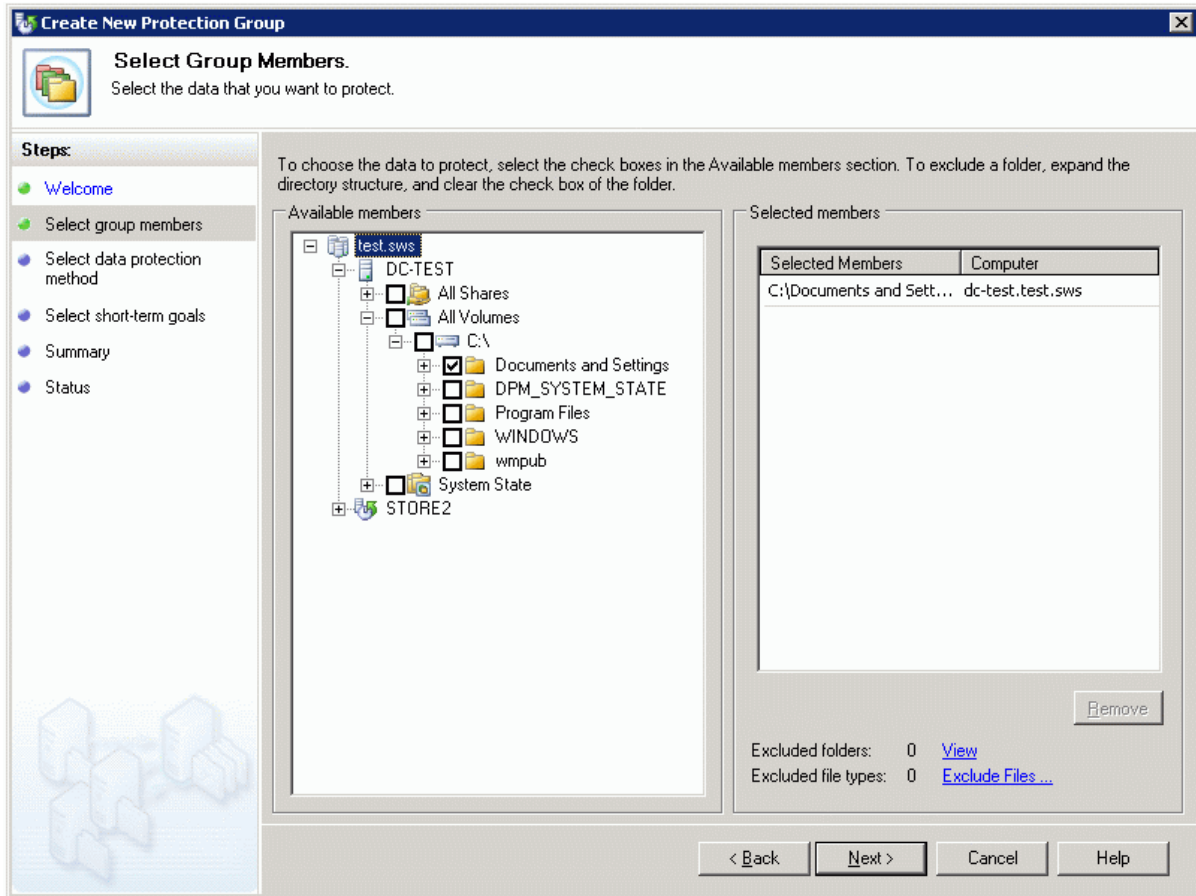
Click on **Create protection group...**

The **Create New Protection Group Wizard** appears.



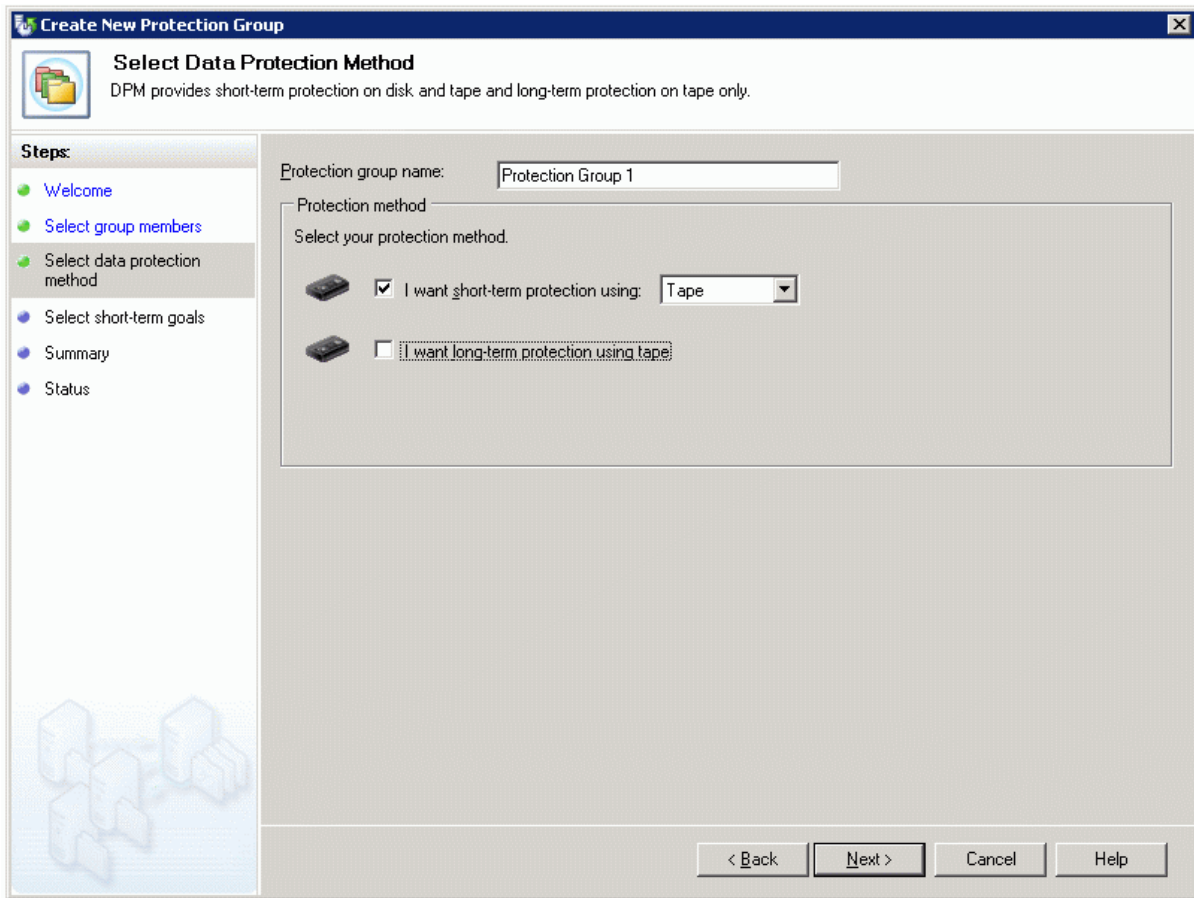
Press the **Next** button to continue.

Select what you want to protect.



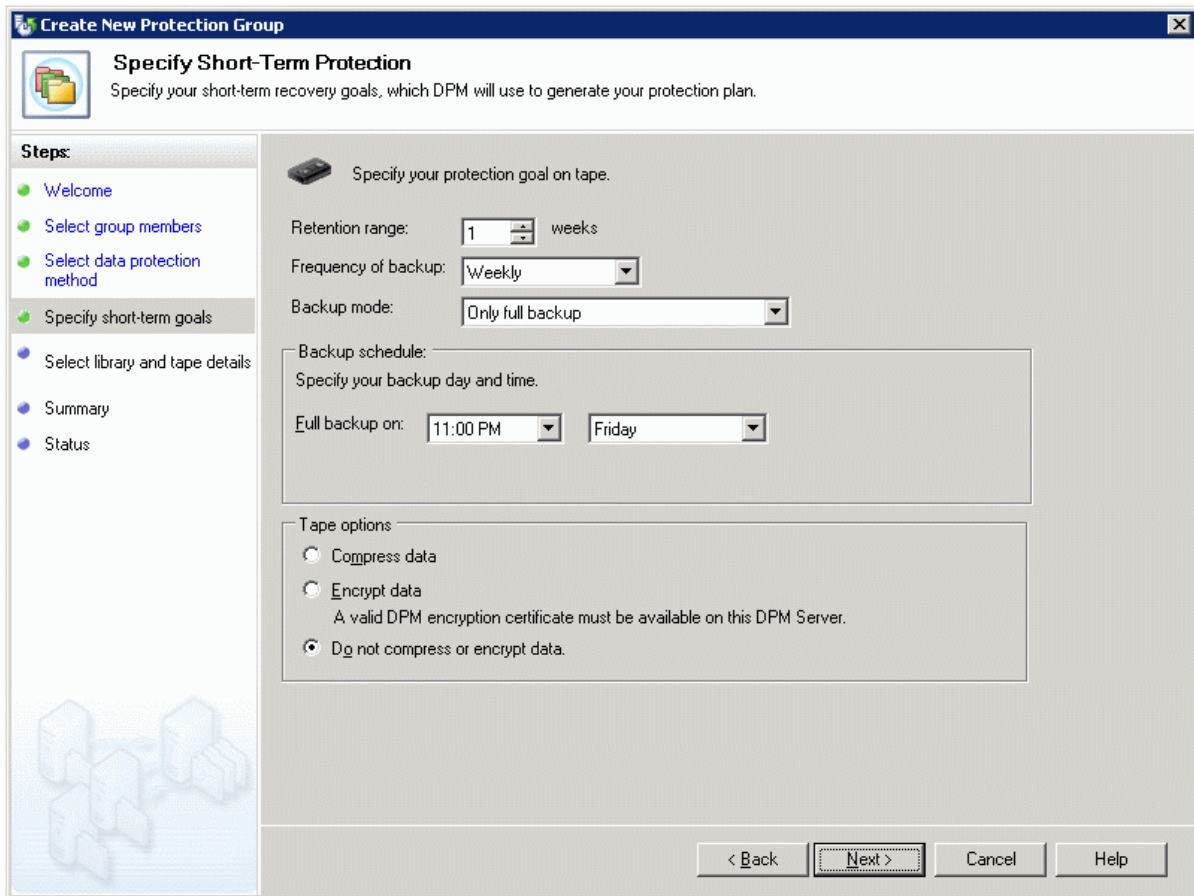
Click **Next**.

Select protection method **Tape**.



Click **Next**.

## Specify short-term goals.



**Specify Short-Term Protection**  
Specify your short-term recovery goals, which DPM will use to generate your protection plan.

**Steps:**

- Welcome
- Select group members
- Select data protection method
- Specify short-term goals**
- Select library and tape details
- Summary
- Status

Specify your protection goal on tape.

Retention range: 1 weeks

Frequency of backup: Weekly

Backup mode: Only full backup

Backup schedule:  
Specify your backup day and time.

Full backup on: 11:00 PM Friday

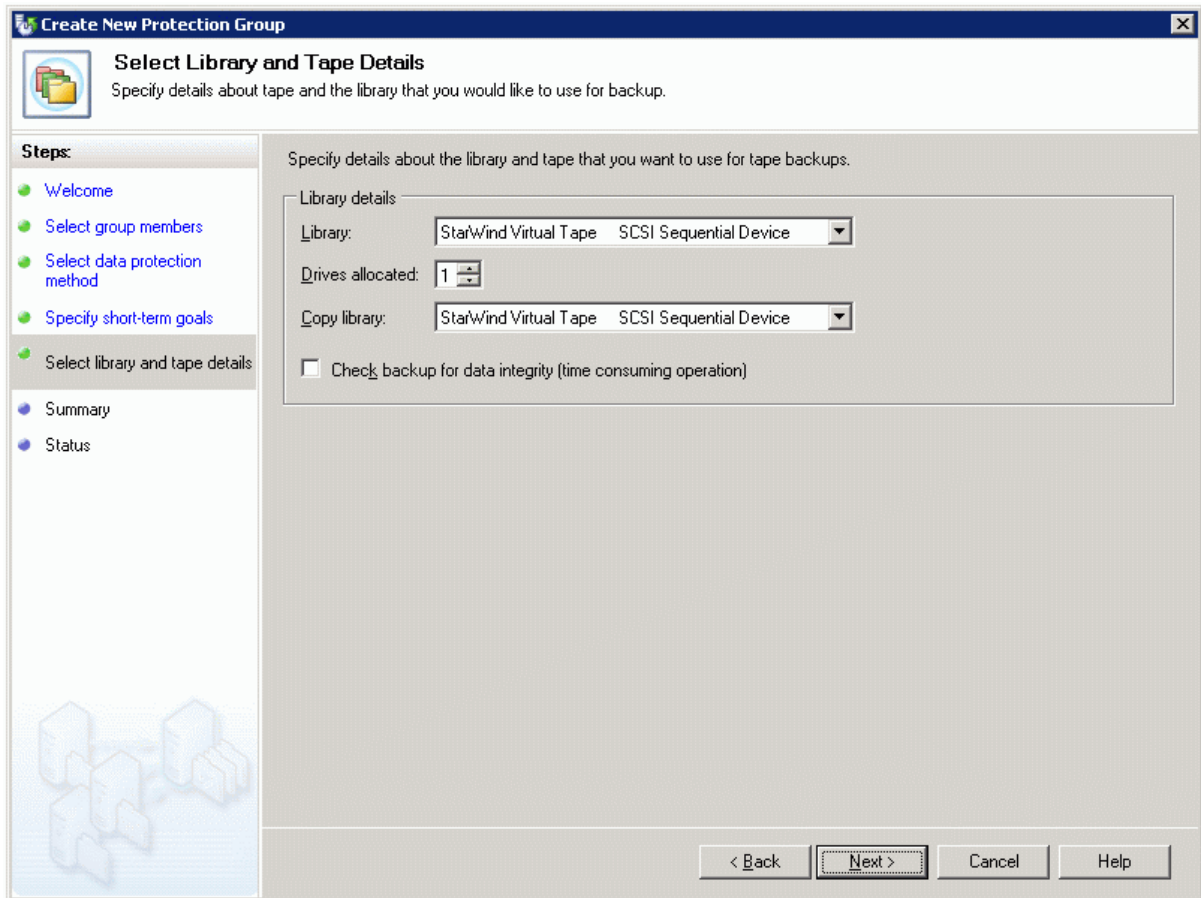
Tape options

- Compress data
- Encrypt data  
A valid DPM encryption certificate must be available on this DPM Server.
- Do not compress or encrypt data.

< Back   Next >   Cancel   Help

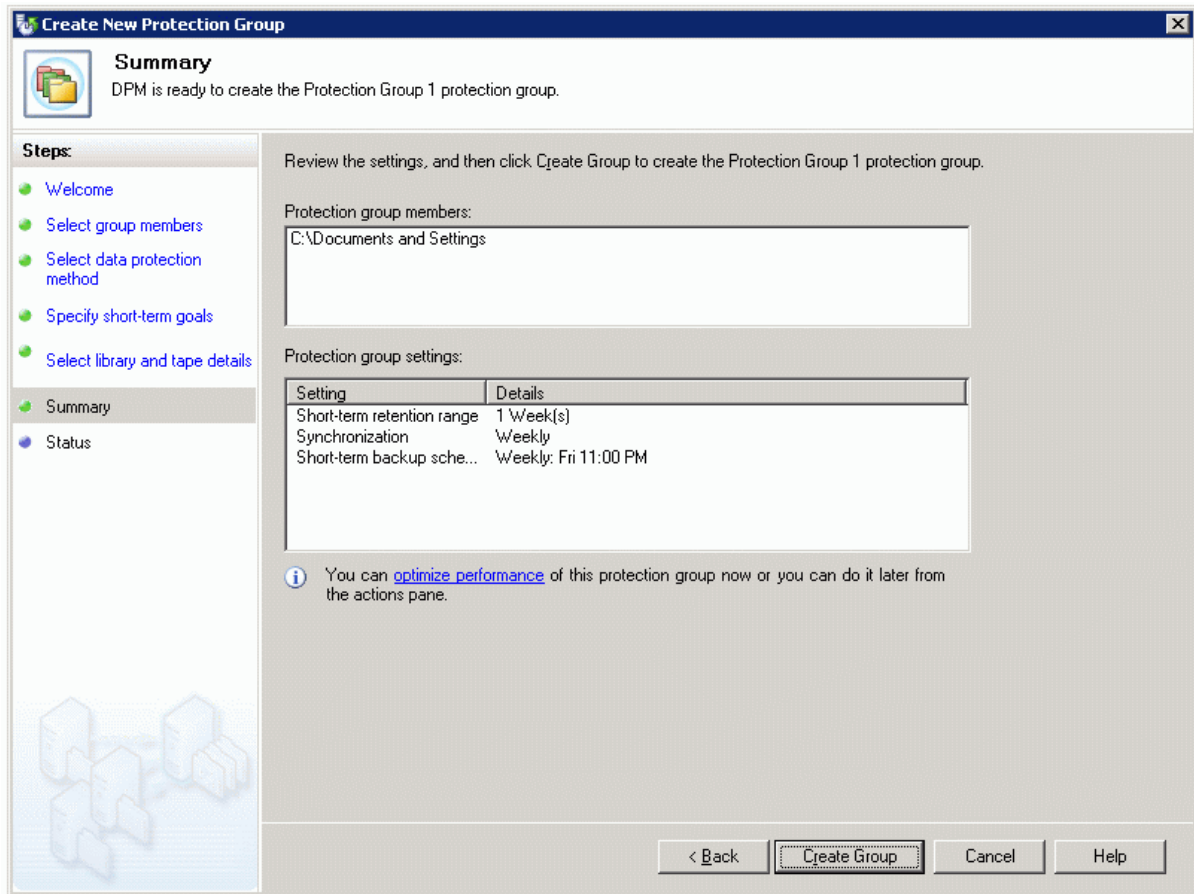
Click **Next**.

## Select **Library details**.

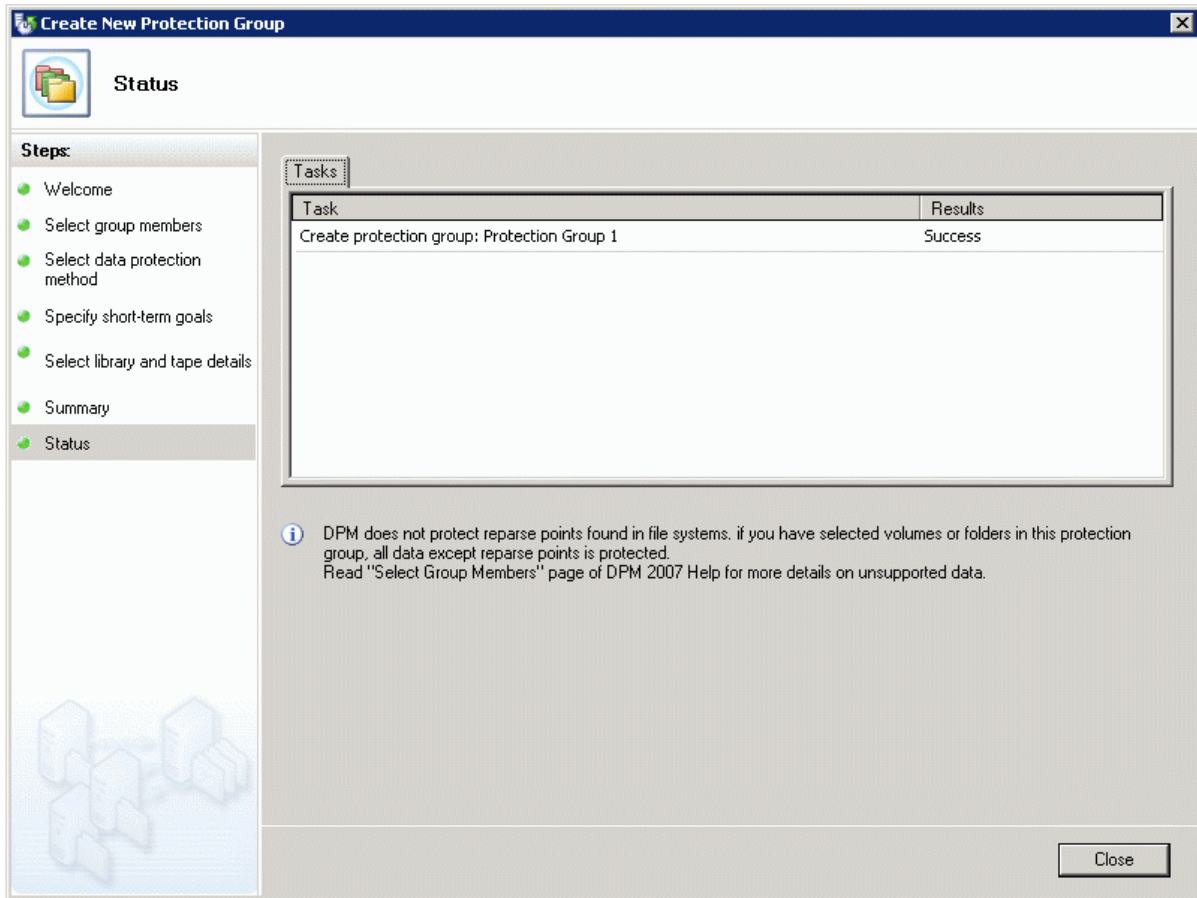


## Click **Next**.

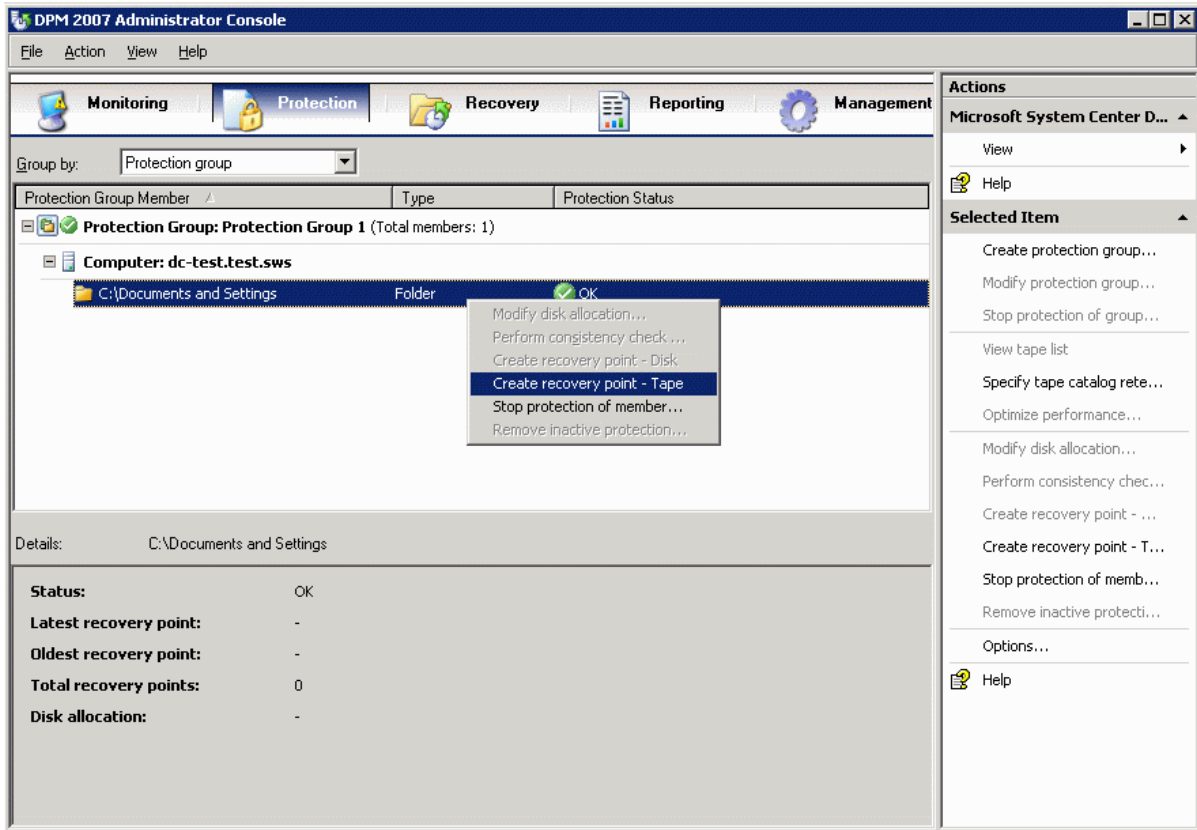
## Click **Create Group**.



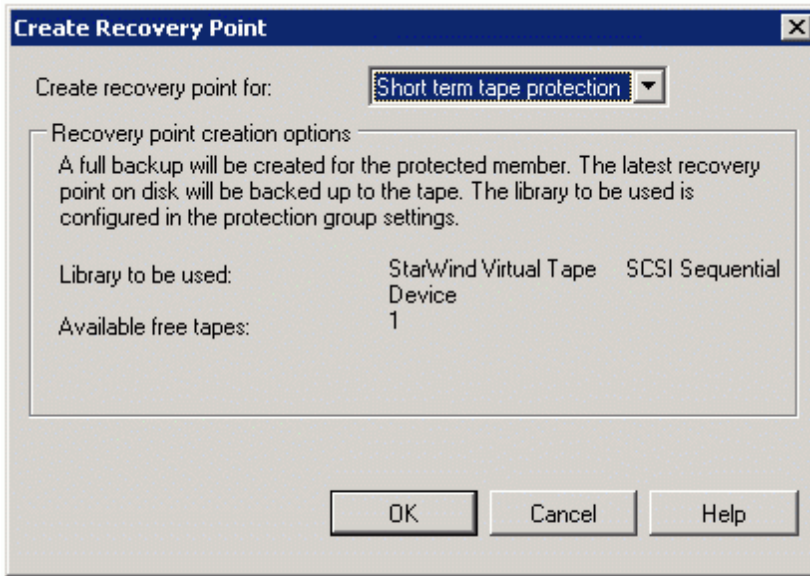
Click **Close** after creation.



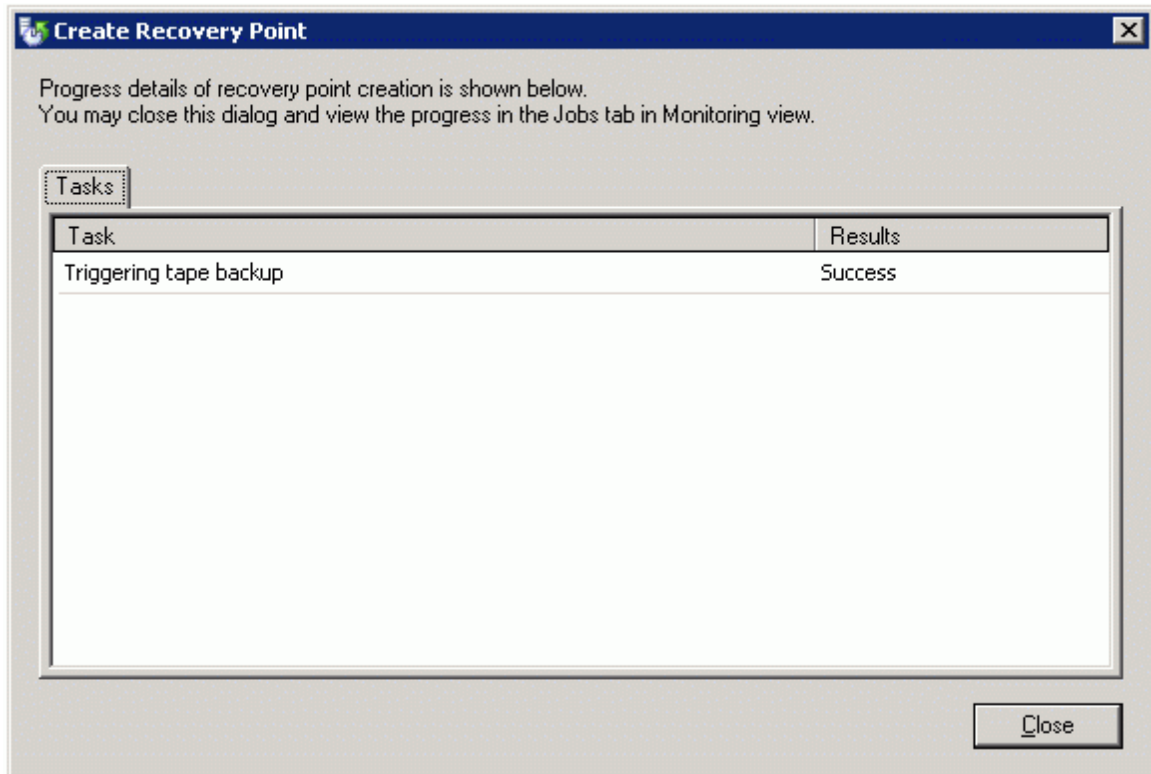
Select protection item, click right mouse button and select **Create recovery point - Tape**.



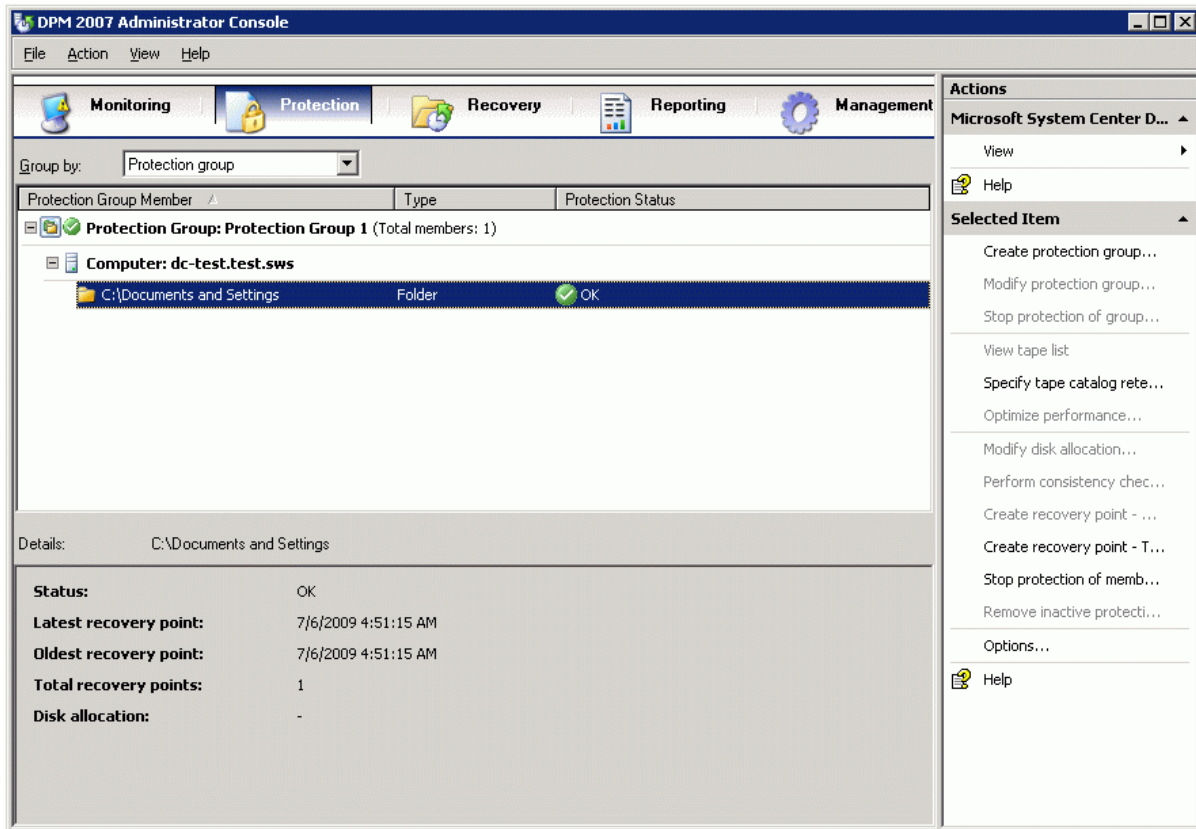
Click **OK**.



Click **Close**.

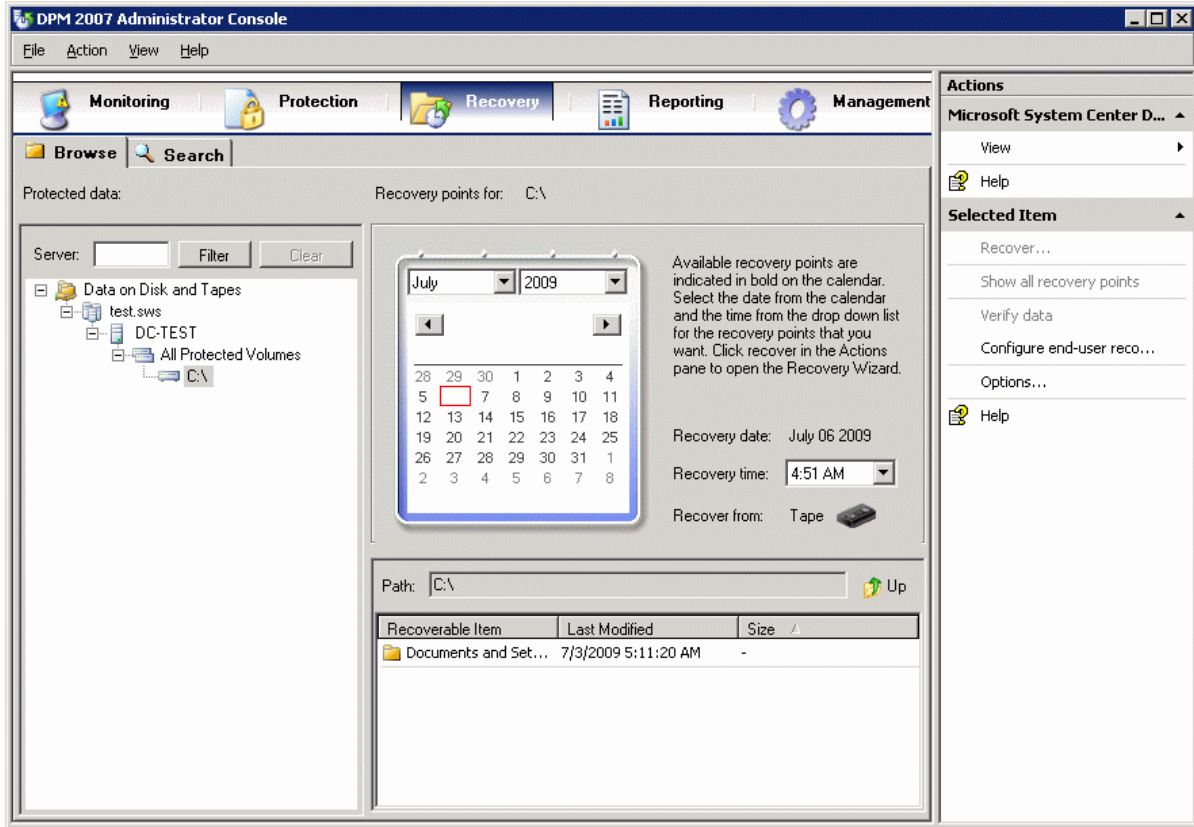


Recovery pint is created.

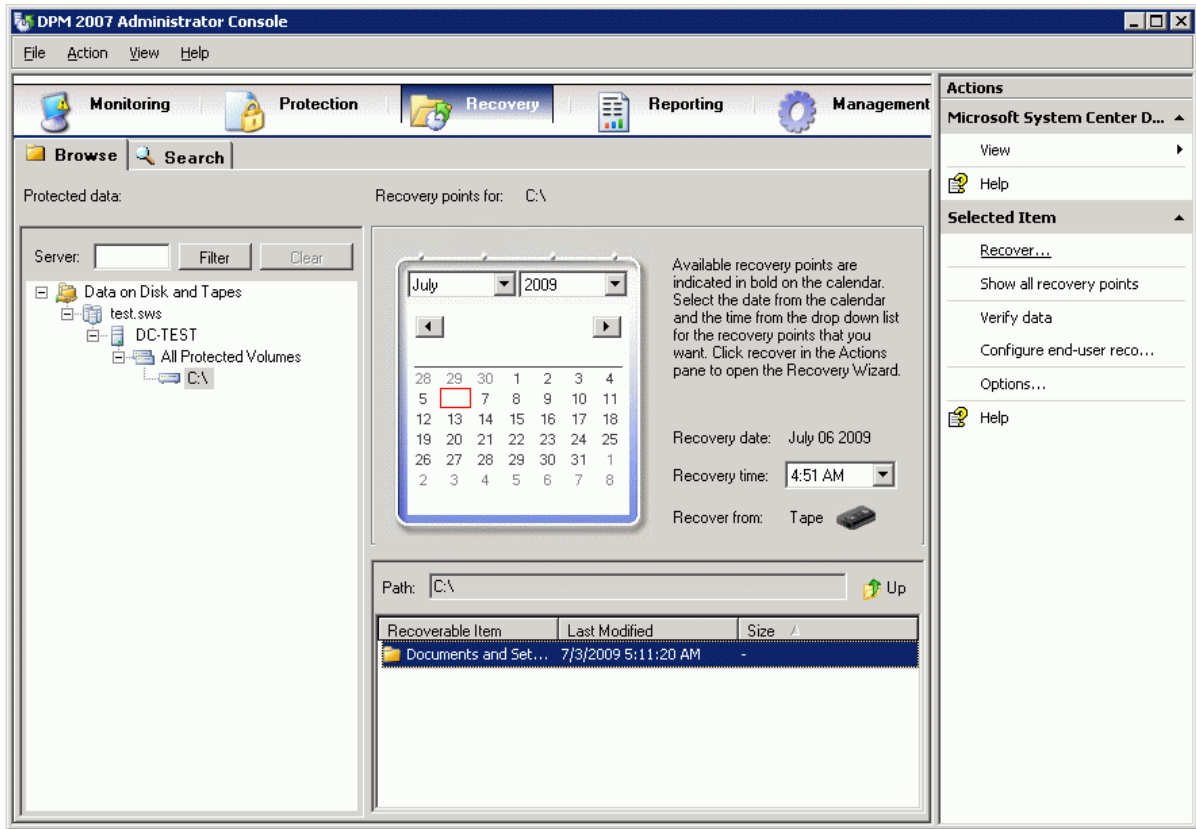


## Restoring data

Launch the **Microsoft System Center Data Protection Manager 2007**. Click on **Recovery**.

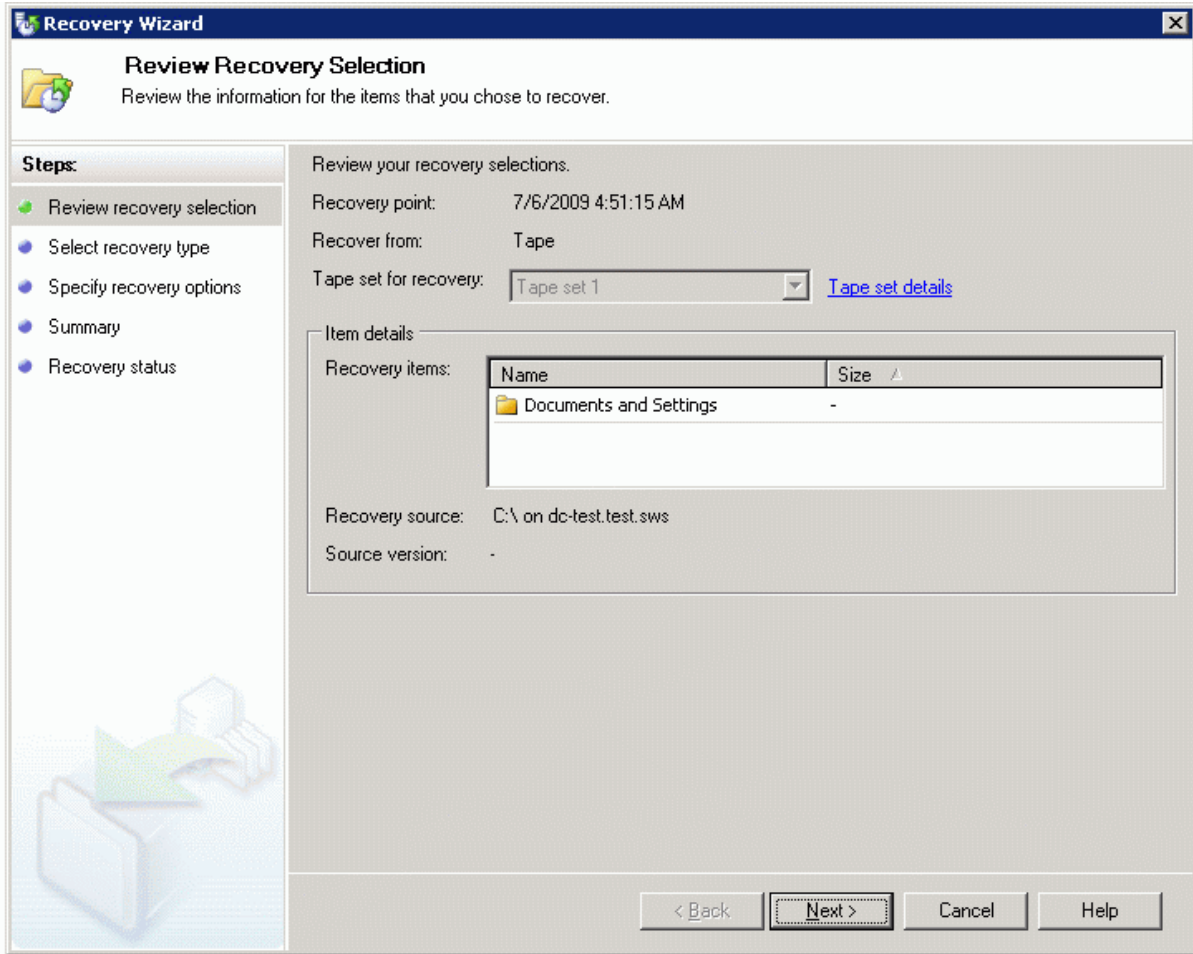


Select recovery point.

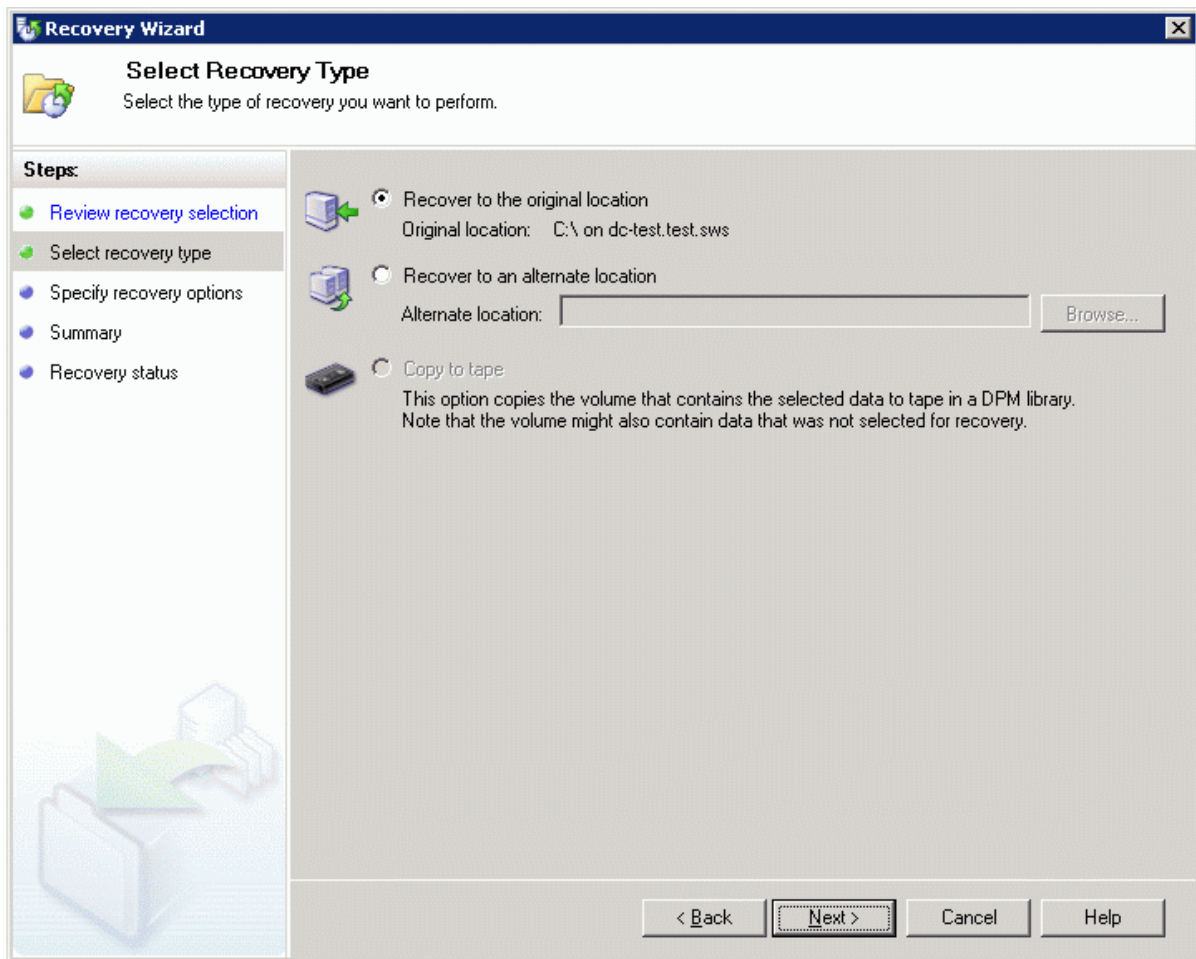


Click **Recover**.

Click **Next**.

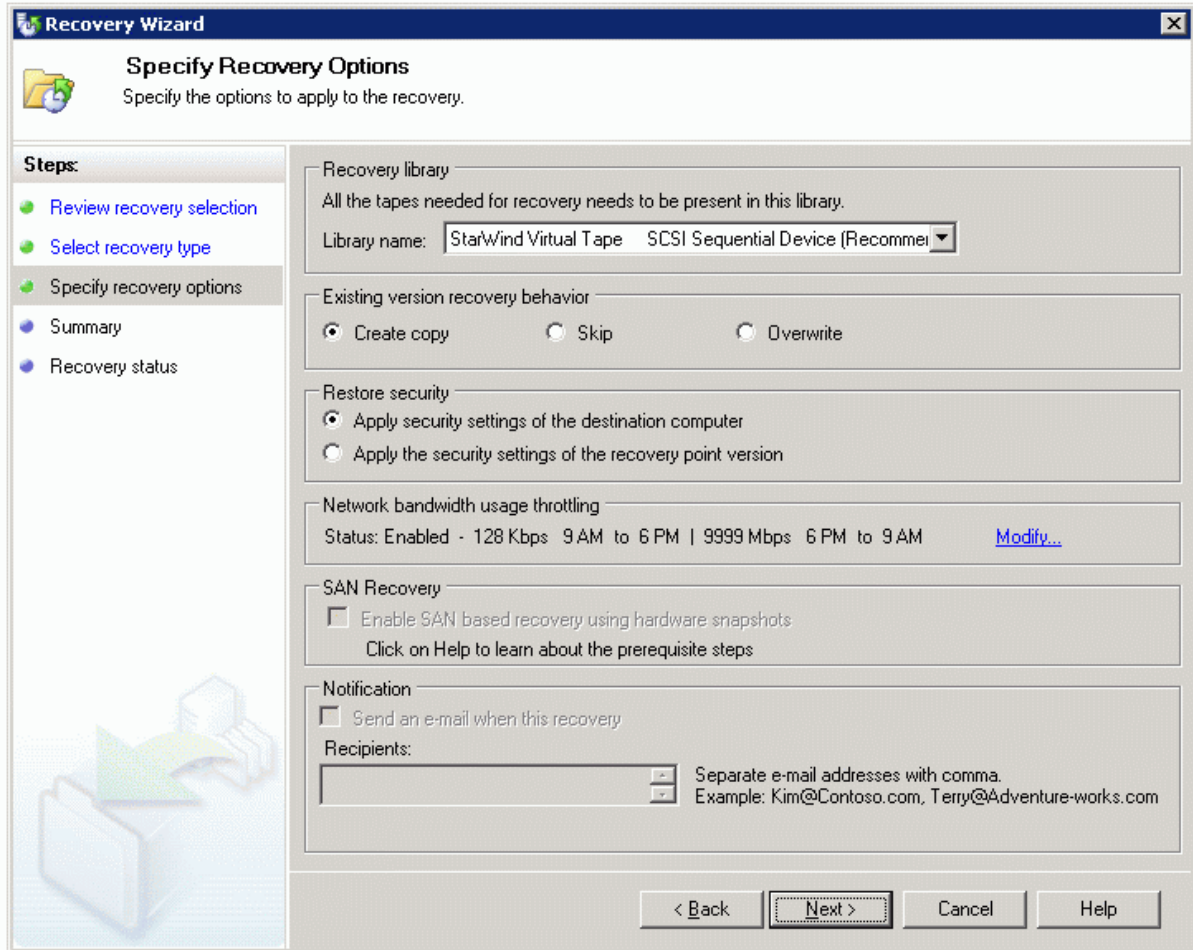


Select recover destination.



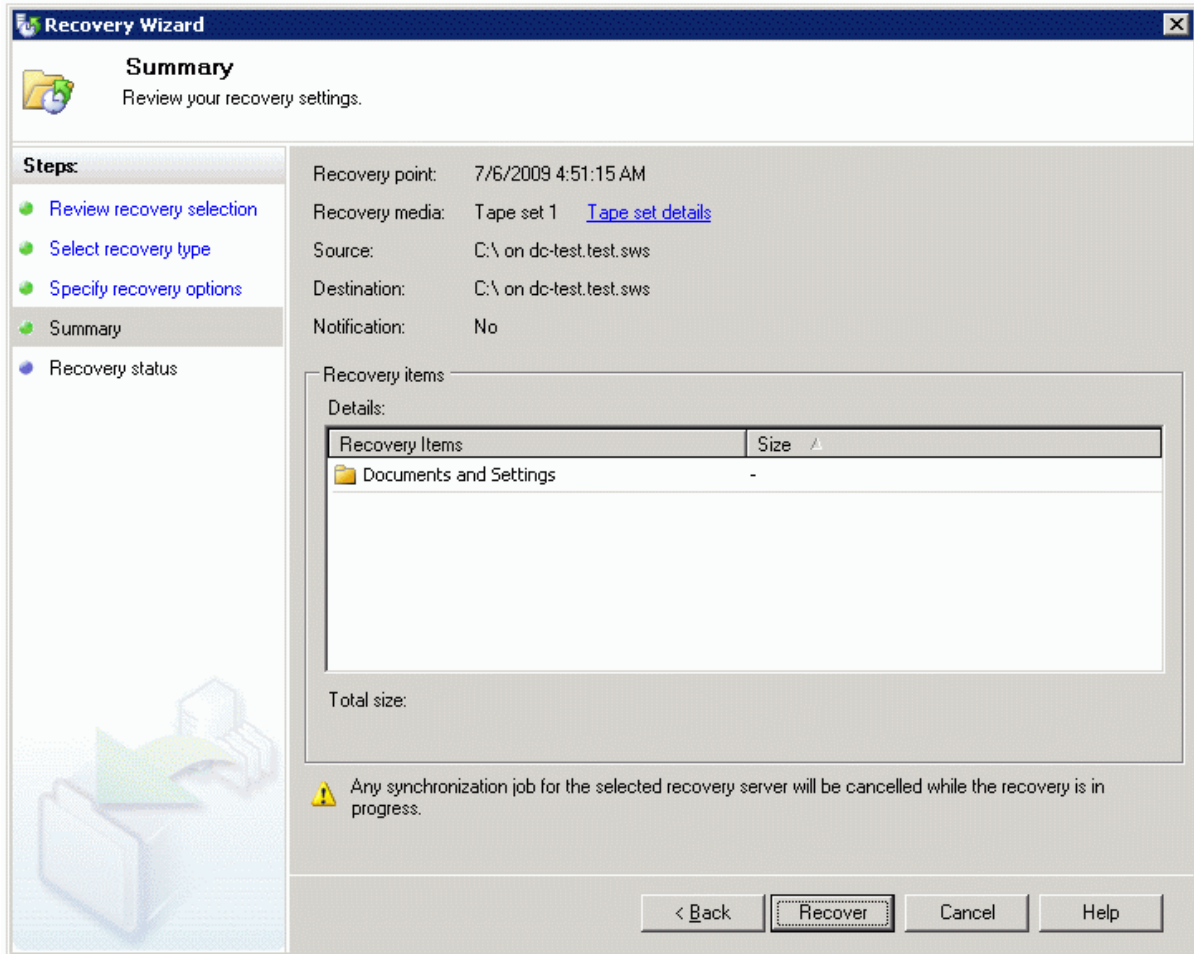
Click **Next**.

## Select Recovery options.

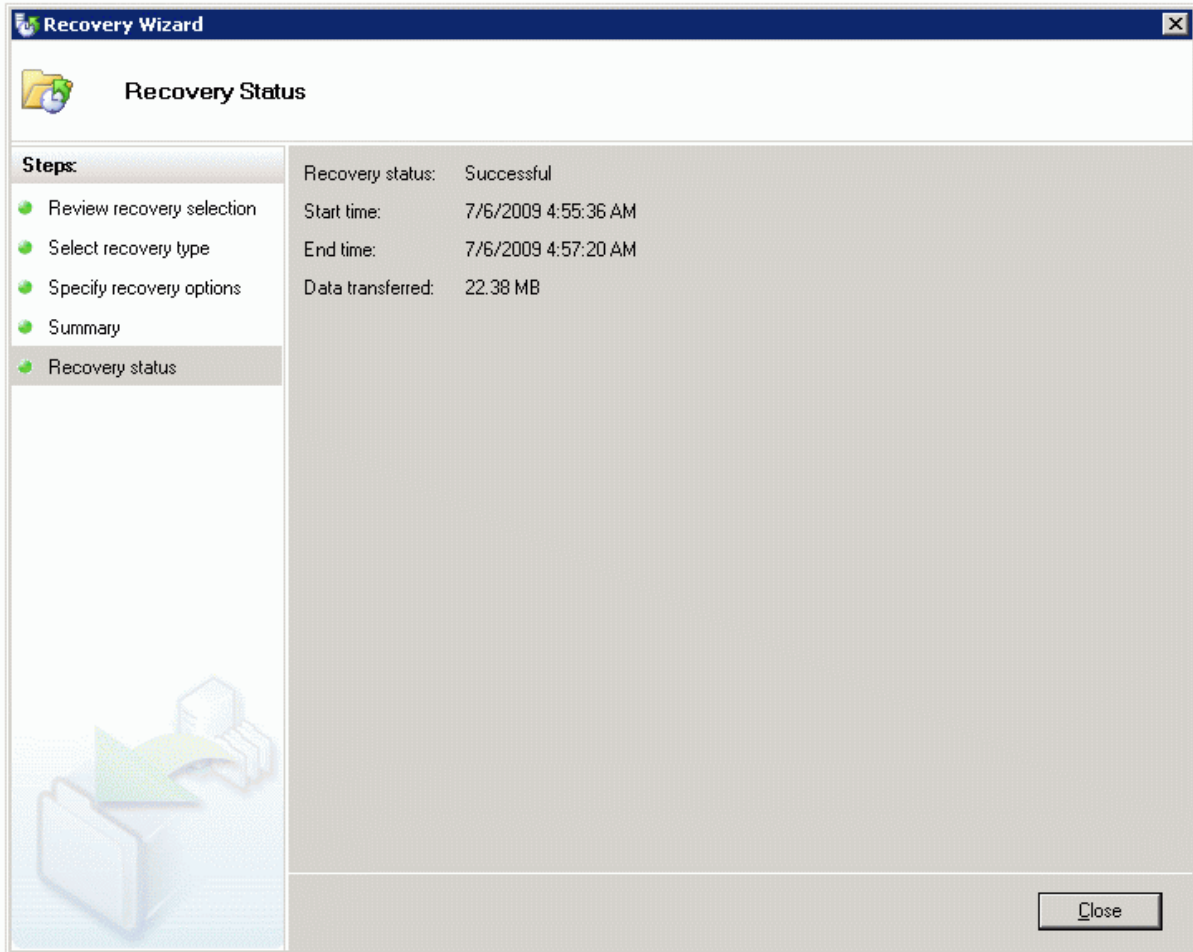


Click **Next**.

Click **Recover**.



After successful recovery click **Close**.



## Conclusion

## Contacts

Support: [www.starwindsoftware.com/support](http://www.starwindsoftware.com/support)

Support Forum: [www.starwindsoftware.com/forums](http://www.starwindsoftware.com/forums)

Sales E-mail: [sales@starwindsoftware.com](mailto:sales@starwindsoftware.com)

## US Headquarters

Direct phone number: 1-617-449-7717

Fax: 1-617-507-5845

## EMEA, APAC

Direct phone numbers: +44-0-2071936727

+44-0-2071936350

Voice Mail: 1-866-790-2646

### **StarWind Software Inc.**

40 Mall Rd., Burlington

MA 01803, USA

[www.starwindsoftware.com](http://www.starwindsoftware.com)