

# **StarWind iSCSI SAN Software: Virtual Tape Library (Part 3)**

[www.starwindsoftware.com](http://www.starwindsoftware.com)

Copyright © StarWind Software 2008-2011. All rights reserved.

## COPYRIGHT

Copyright © StarWind Software 2008-2011. All rights reserved. No part of this publication may be reproduced, stored in a retrieval system, or transmitted in any form or by any means, electronic, mechanical, photocopying, recording or otherwise, without the prior written consent of StarWind Software.

## TRADEMARKS

“StarWind”, “StarWind Software” and the StarWind and the StarWind Software logos are trademarks of StarWind Software which may be registered in some jurisdictions. All other trademarks are owned by their respective owners.

## CHANGES

The material in this document is for information only and is subject to change without notice. While reasonable efforts have been made in the preparation of this document to assure its accuracy, StarWind Software assumes no liability resulting from errors or omissions in this document, or from the use of the information contained herein. StarWind Software reserves the right to make changes in the product design without reservation and without notification to its users.

## TECHNICAL SUPPORT AND SERVICES

If you have questions about installing or using this software, check this and other documents first - you will find answers to most of your questions here or there. If you need further assistance, please contact us.

## Table of Contents

<b>Introduction.....</b>	<b>4</b>
<b>Configuring StarWind Server.....</b>	<b>6</b>
<b>CA ARCserve .....</b>	<b>7</b>
<b>Applying registry settings .....</b>	<b>7</b>
<b>Preparing the Media .....</b>	<b>8</b>
<b>Performing backup .....</b>	<b>19</b>
<b>Restoring data .....</b>	<b>24</b>
<b>Conclusion.....</b>	<b>30</b>

## Guide

### Introduction

StarWind Software Inc. StarWind allows creating Virtual Tape Devices and Tape Libraries based upon hard disk storage. A Virtual Tape Device is a special file on a hard drive that's made available to your network that is used for file backup and recovery purposes.

By enabling virtualized hard drive space as a Tape Device, Backup Managers are able to integrate VTLs with existing backup software and current backup and recovery processes and procedures. It also enables the "backup to disk" functionality that many older backup software versions do not support. This prevents unnecessary and costly backup software upgrades.

Instead of having to use expensive tapes and tape drive systems, Starwind VTL solution allows Backup Managers to store backup data on inexpensive PATA and SATA hard drive systems. By backing up your data to disk instead of tapes, VTLs will most often increase performance for both backup and restore operations. Scalability is increased by using RAID array enclosures to host and store your VTLs, by allowing the addition of more hard drives and/or enclosures to increase overall storage capacity.

This document provides step-by-step instructions on using **StarWind** virtual tape devices.

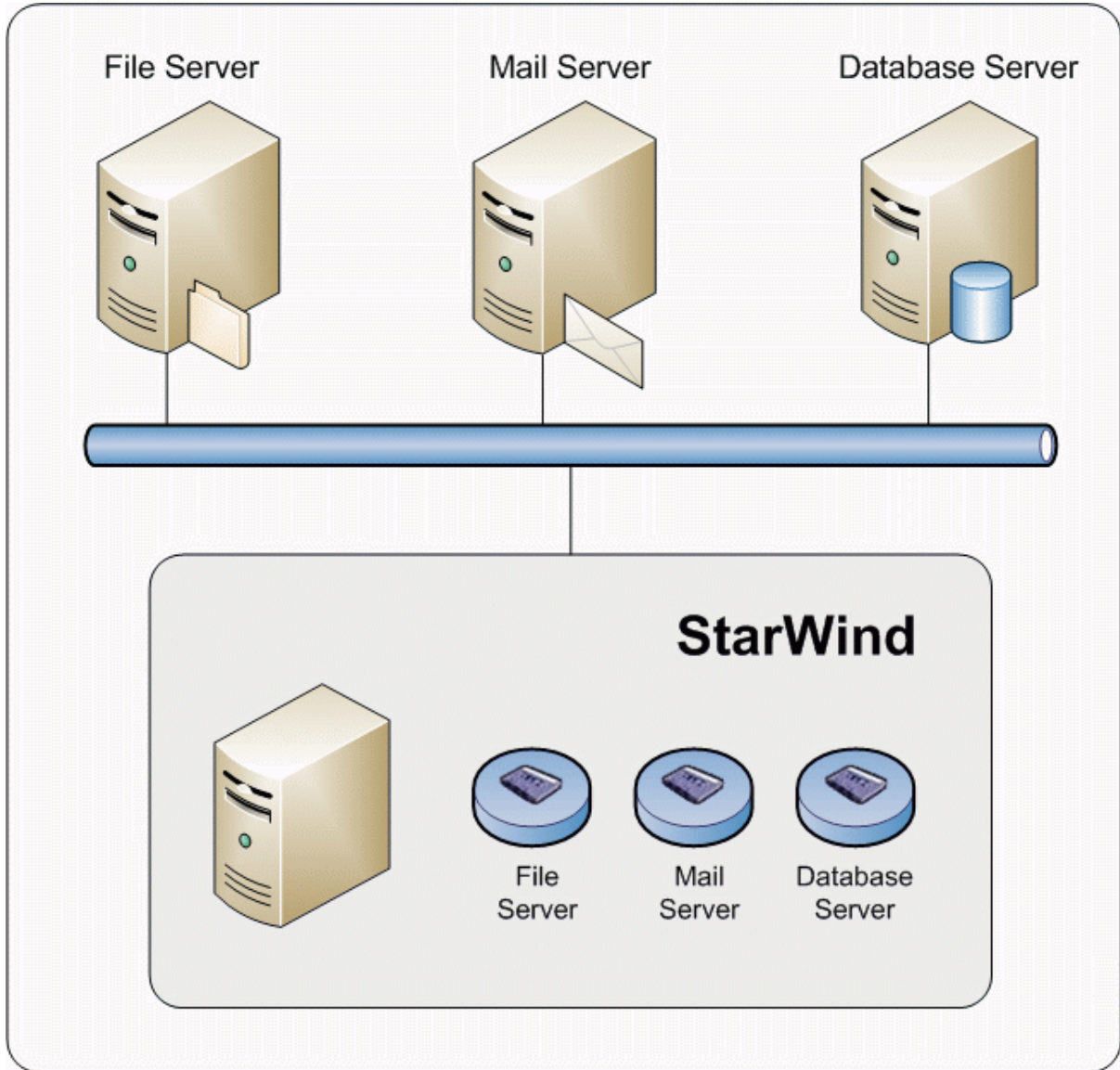


Figure 1. StarWind provides virtual tape devices

## **Configuring StarWind Server**

### **Preparing Virtual Tape Device**

Please refer to **Preparing Virtual Tape Device** section of **StarWind iSCSI Target for Microsoft Windows : Virtual Tape Library (Part 1)** guide.

### **Install StarWind VTL Tape Driver**

Please refer to **Install StarWind VTL Tape Driver** section of **StarWind iSCSI Target for Microsoft Windows : Virtual Tape Library (Part 1)** guide.

### **Connect the Target**

Please refer to **Connect the Target** section of **StarWind iSCSI Target for Microsoft Windows : Virtual Tape Library (Part 1)** guide.

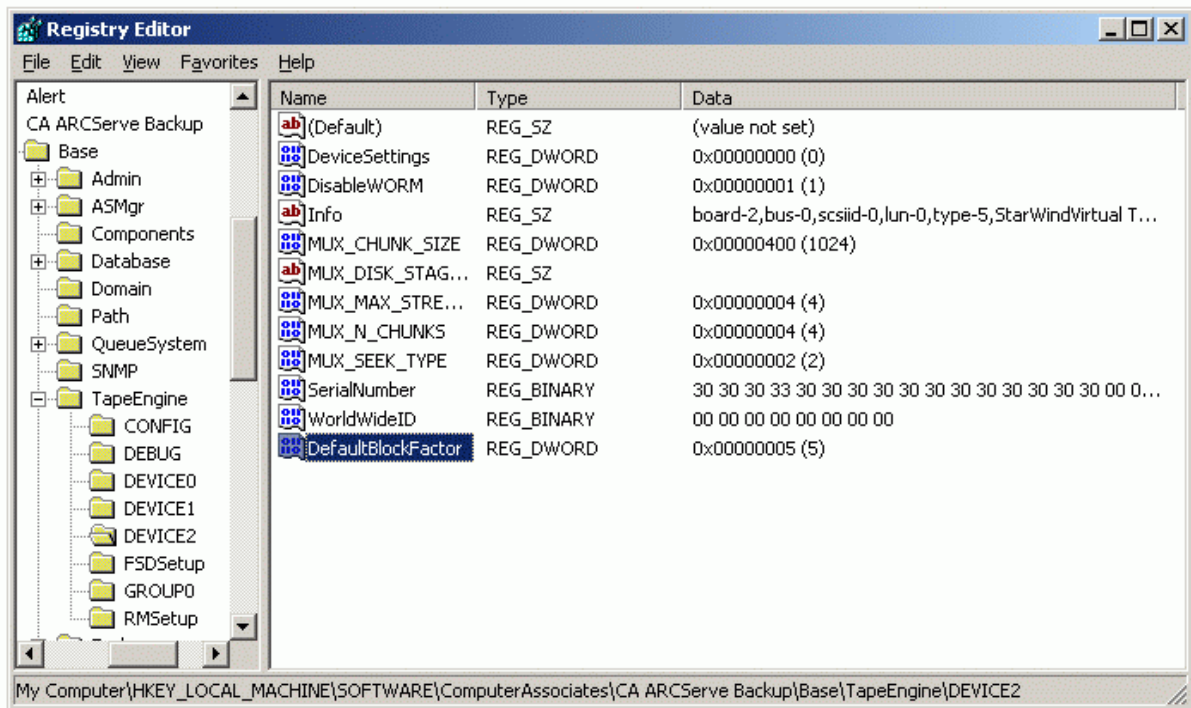
## CA ARCserve

### Applying registry settings

Launch regedit.

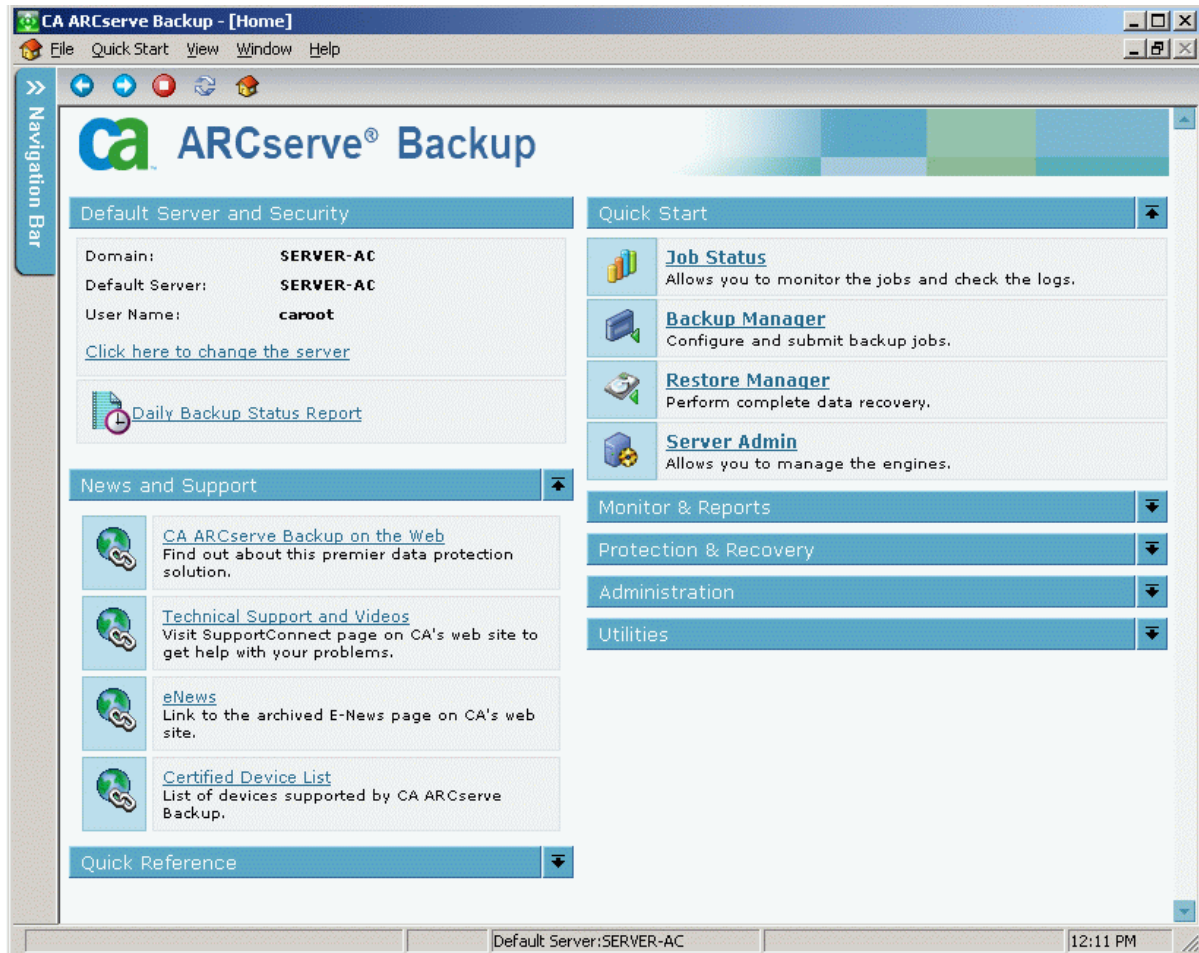
Create registry key **DefaultBlockFactor** (DWORD) in HKEY\_LOCAL\_MACHINE \SOFTWARE\ComputerAssociates\CA ARCserve Backup\Base\TapeEngine \Device# and set value to 5.

**Device#** is the StarWind virtual tape drive.

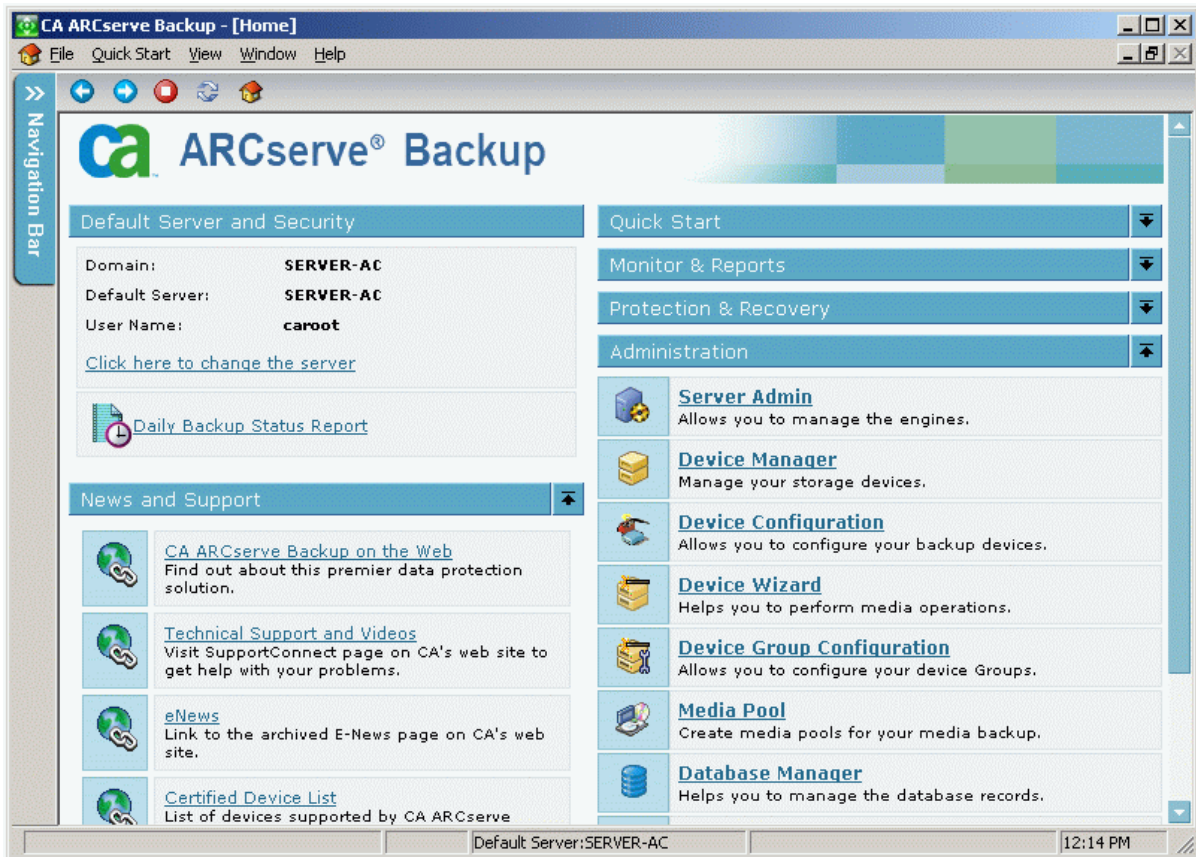


## Preparing the Media

Launch the **Manager**.

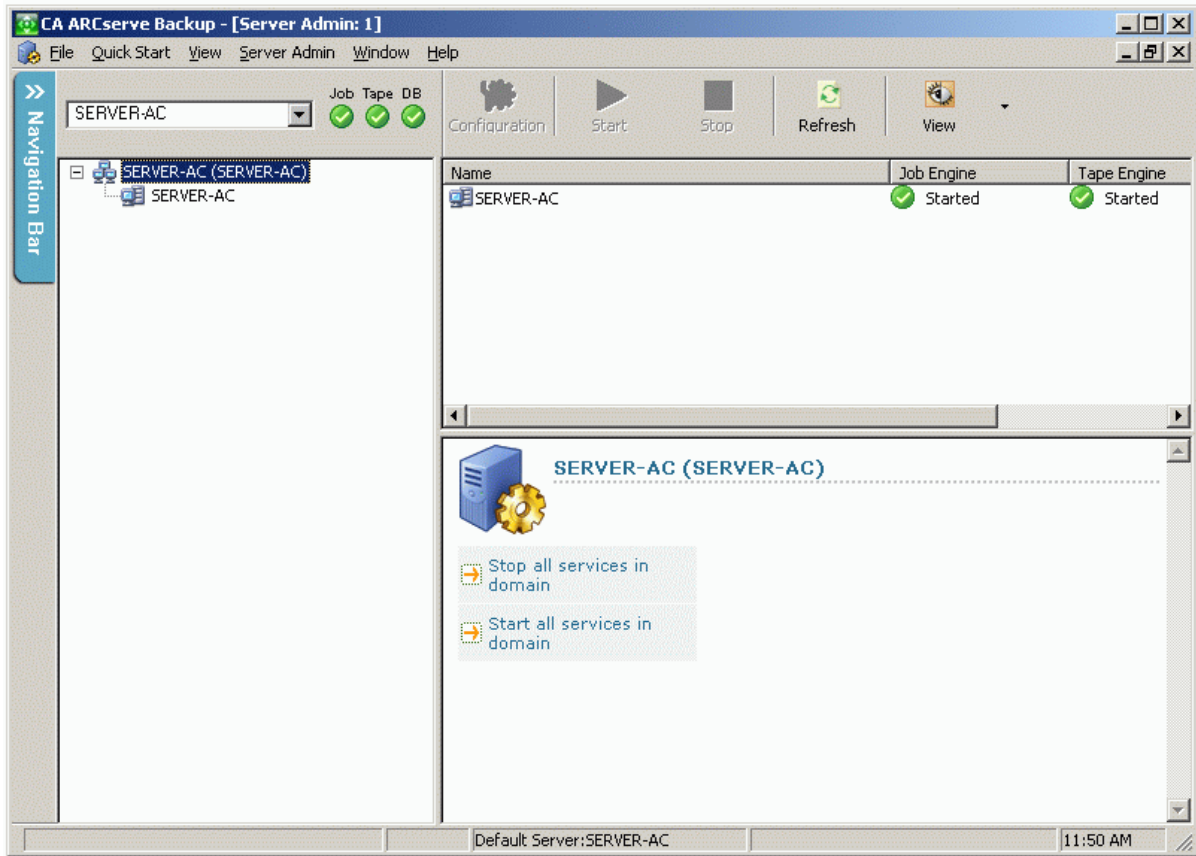


Click on **Administration**.



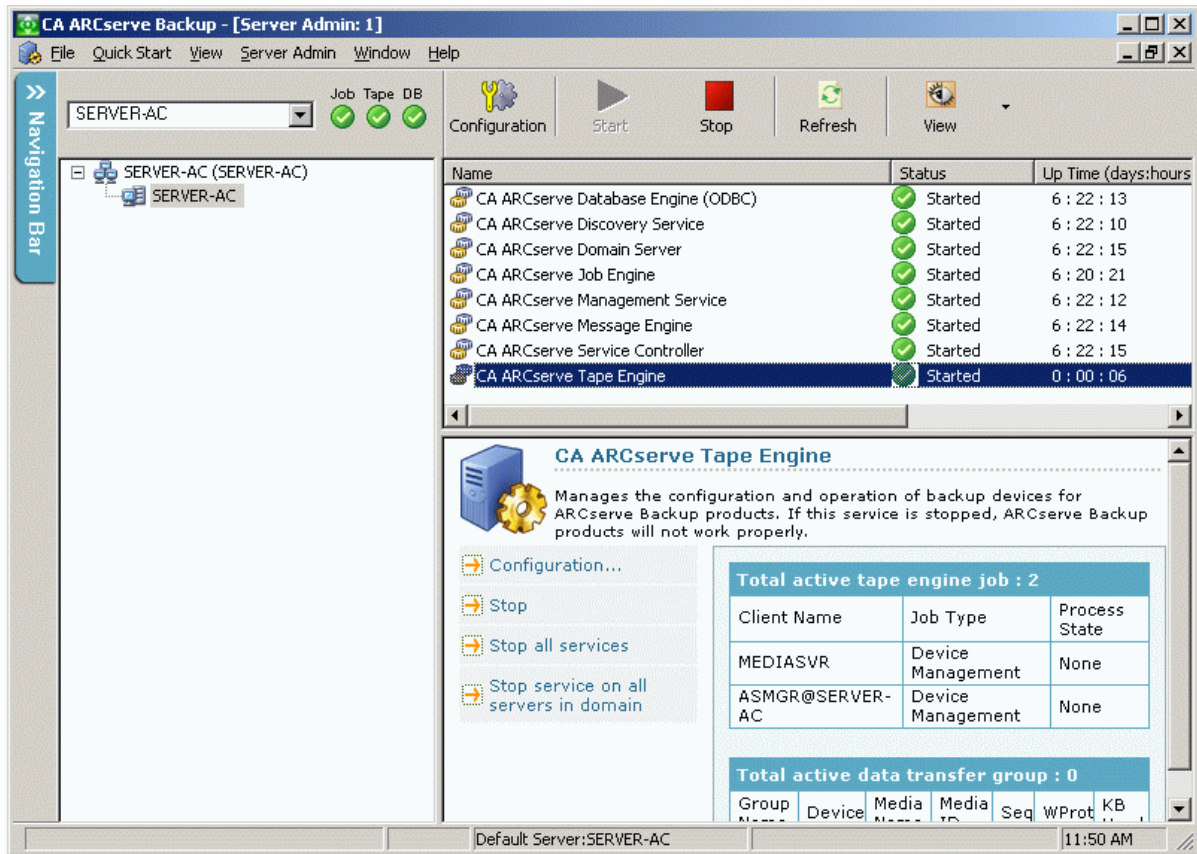
Click on **Server Admin**.

Select your ARCserve server to manage.

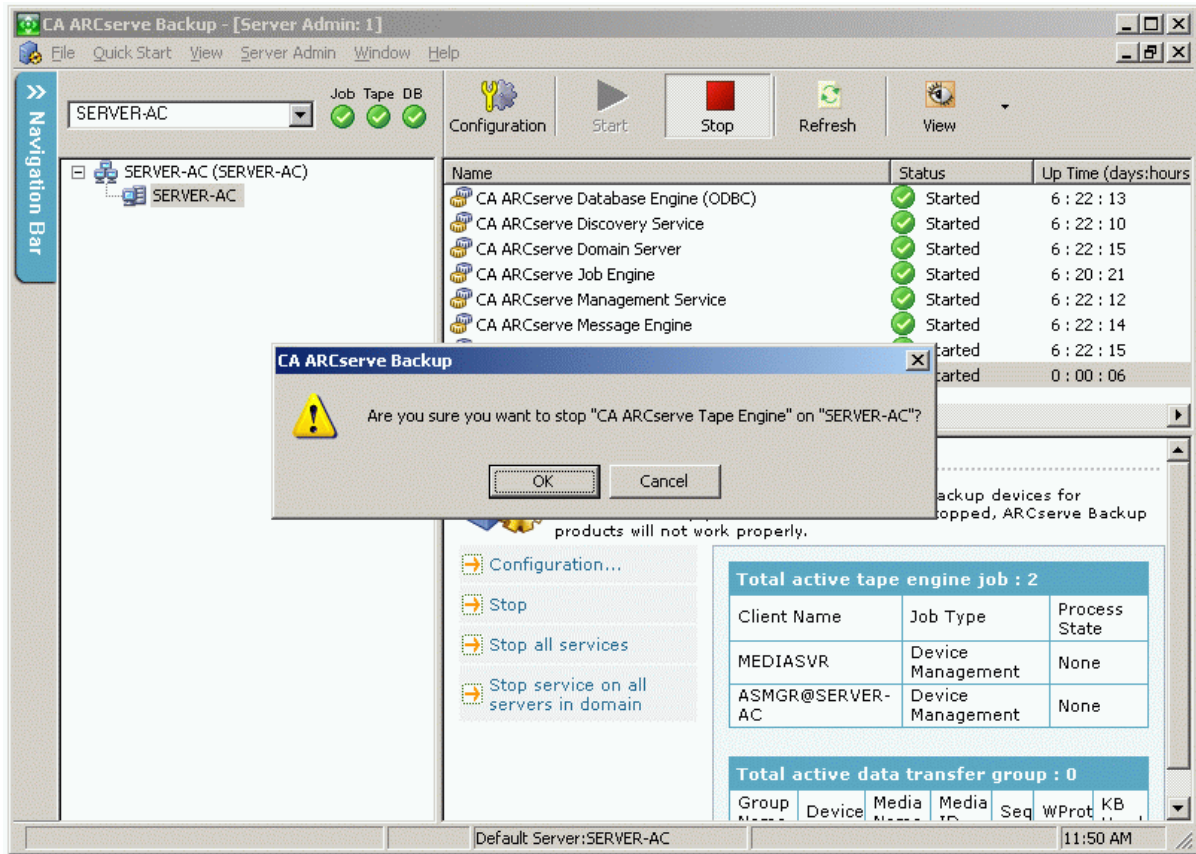


After the registry settings are applied, CA ARCserve Tape Engine must be restarted.

To do that, select CA ARCserve Tape Engine service from the list.

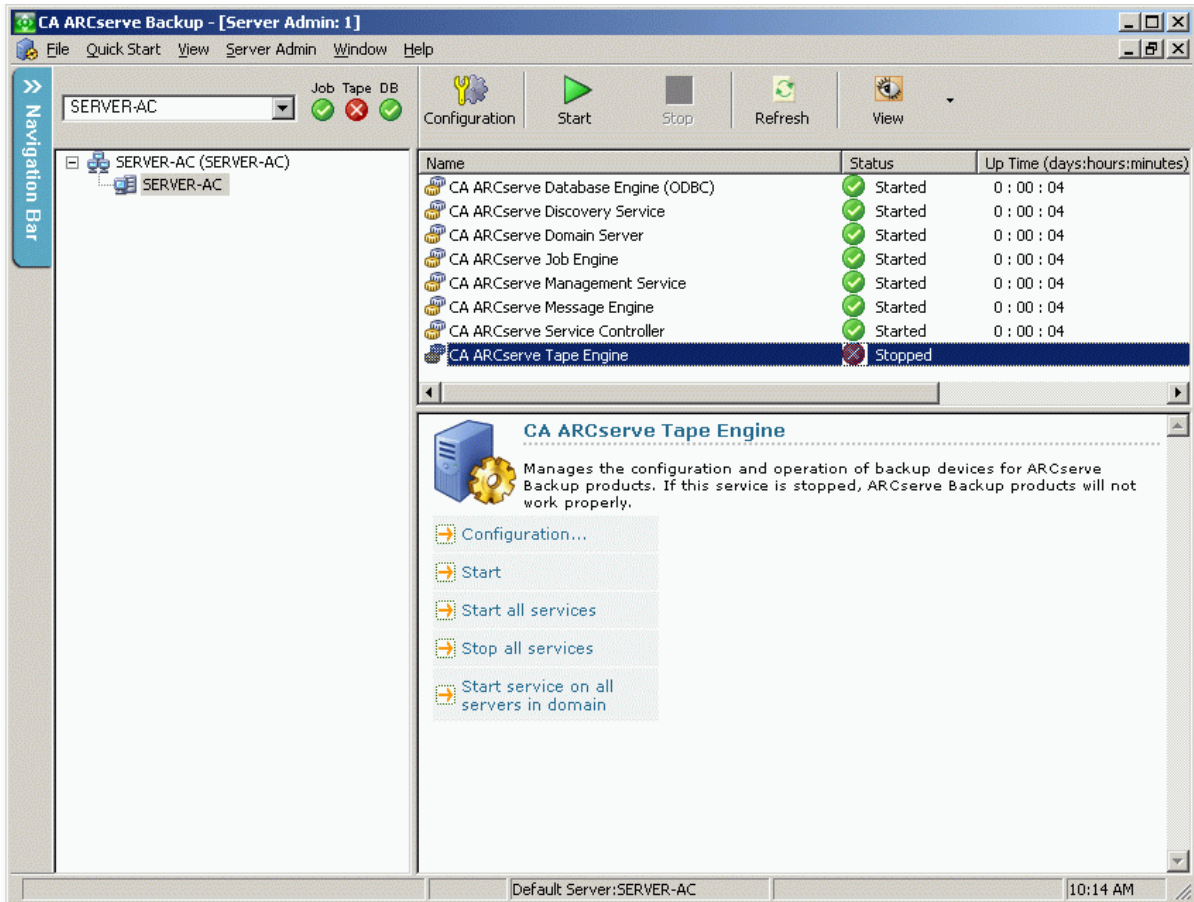


Click **Stop** button.

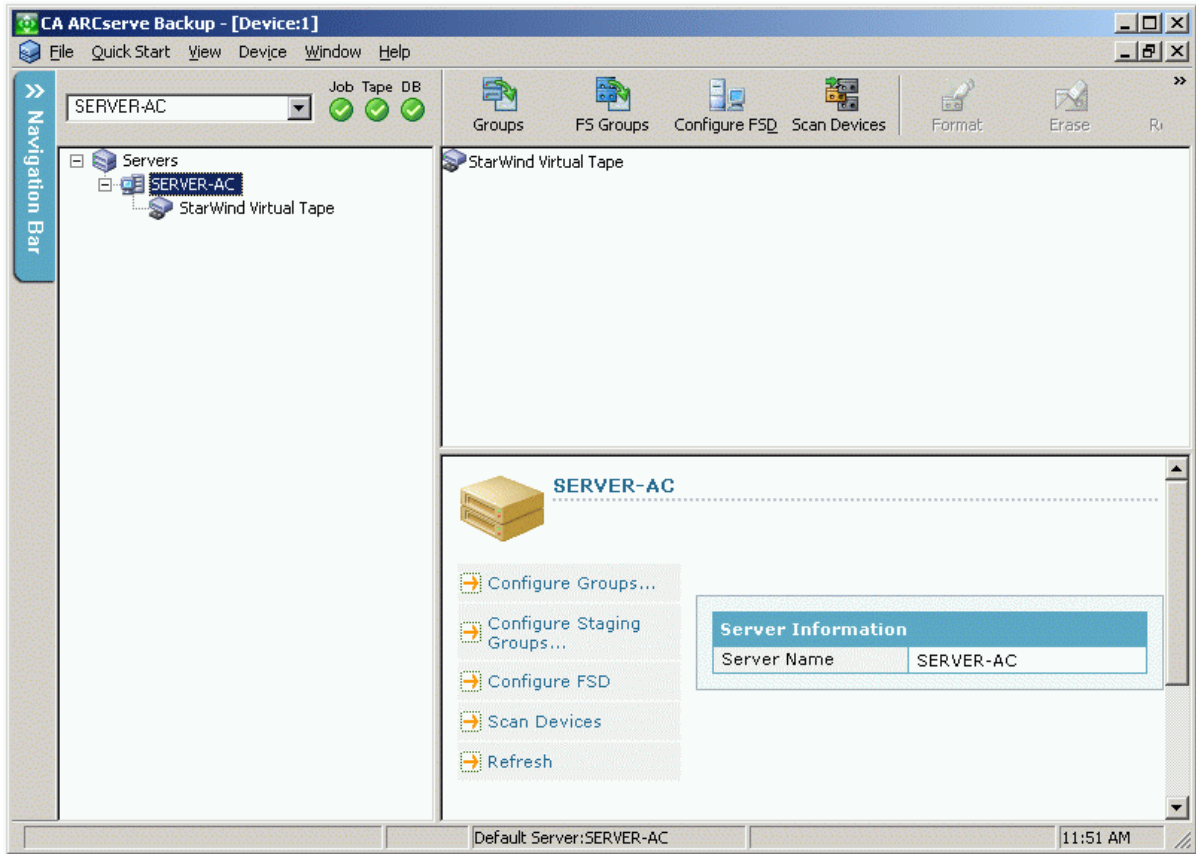


Confirm stopping by clicking **OK**.

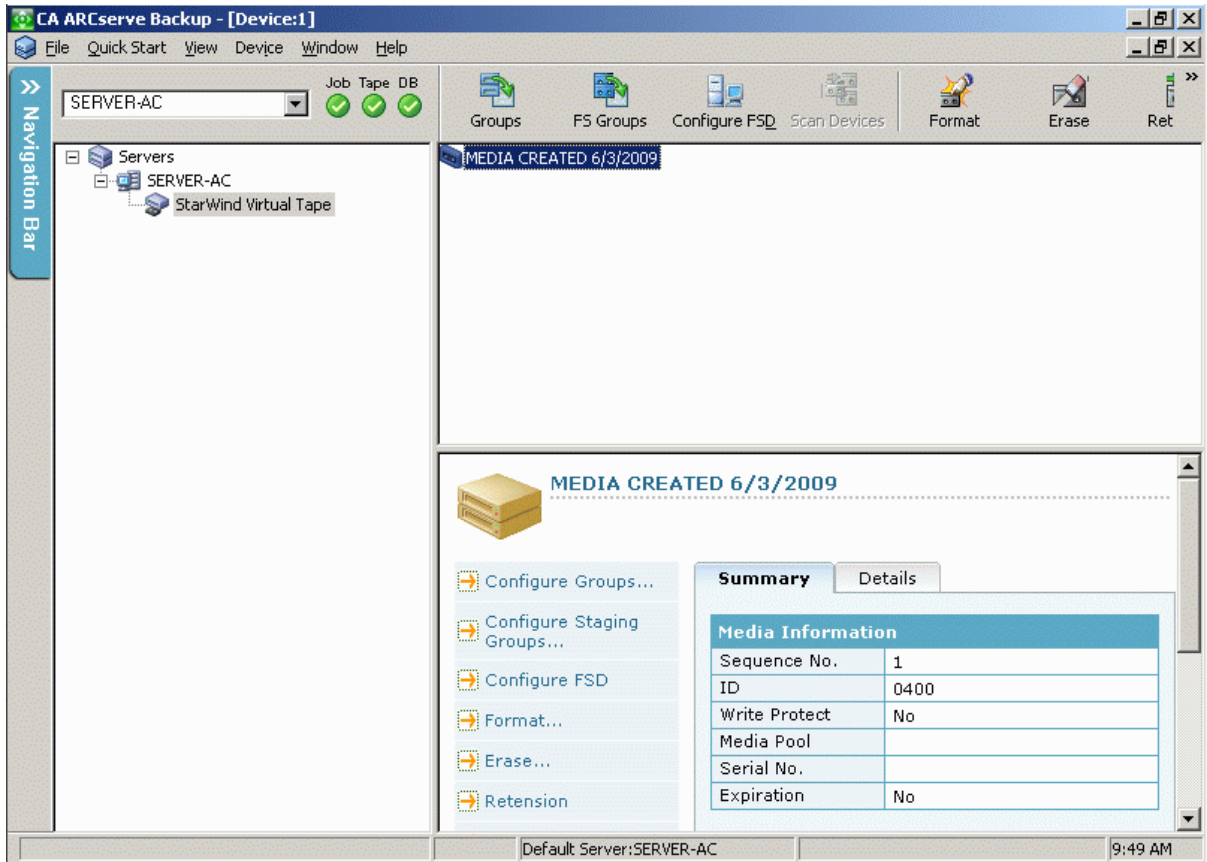
Click **Start** button.



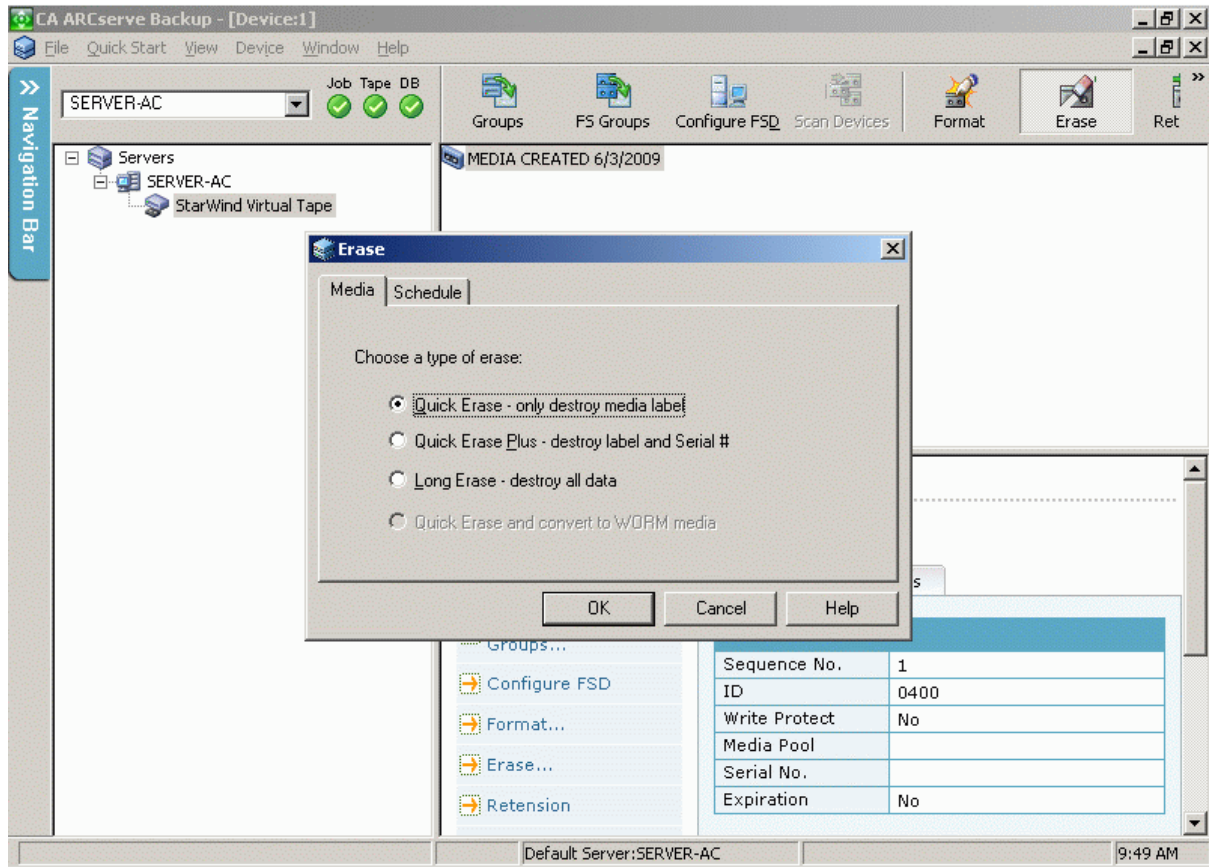
## Switch to **Administration - Device Manager**.



## Select StarWind Virtual Tape.

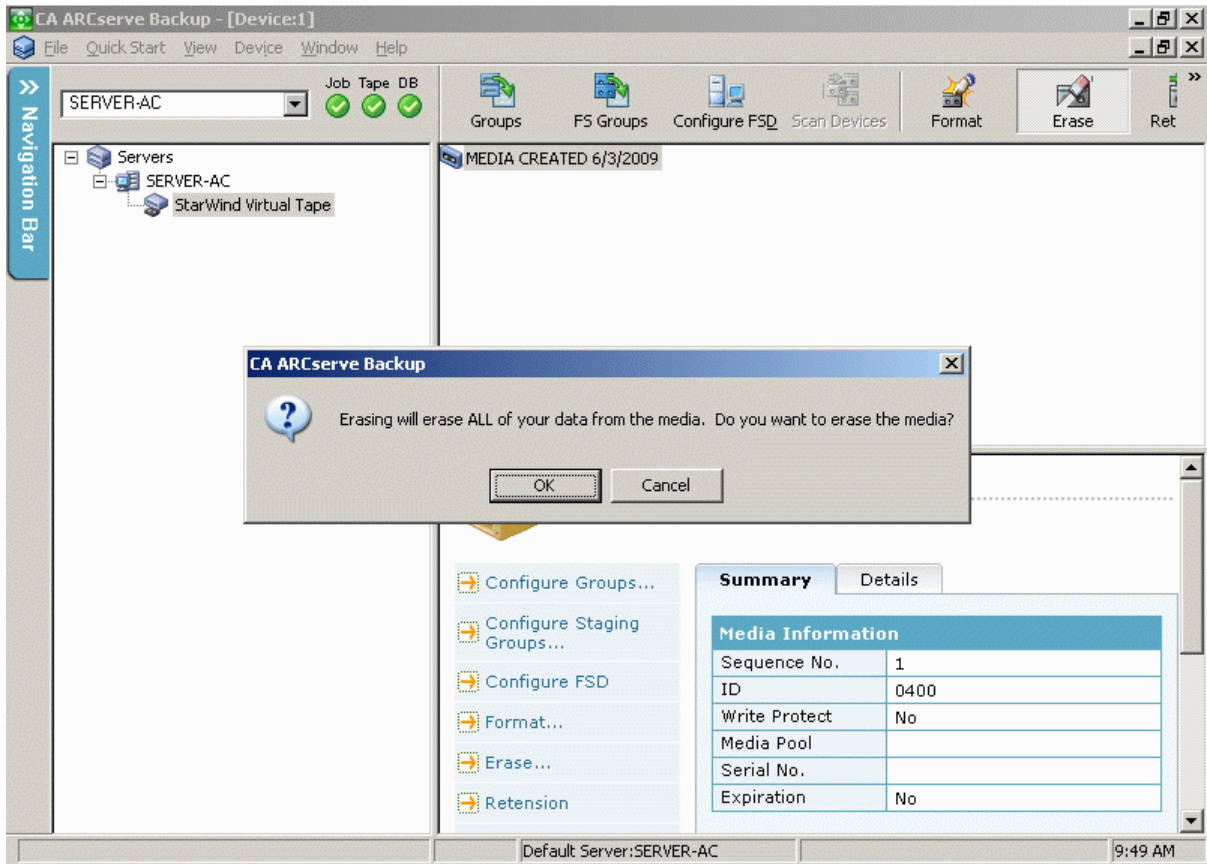


Click **Erase** button.

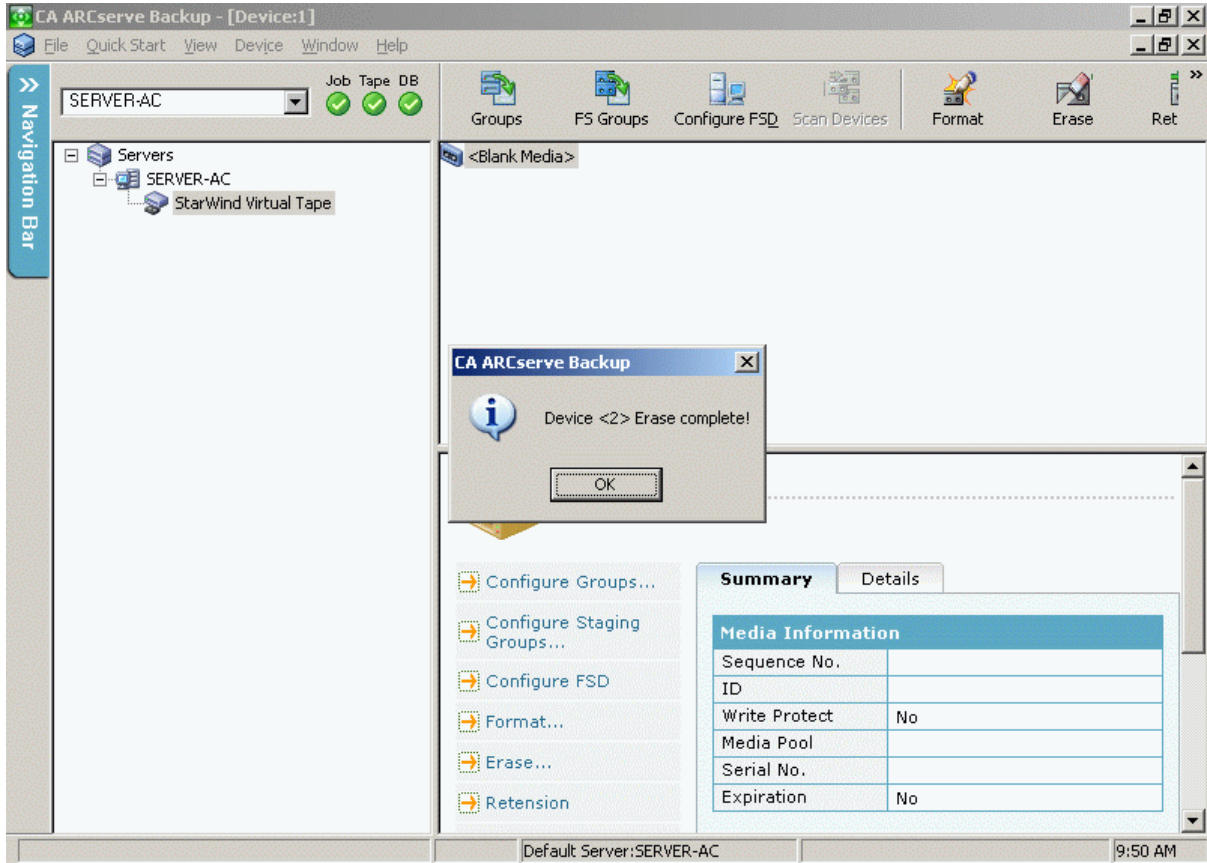


Press the **OK** button to continue.

Press the **OK** button to confirm erase.

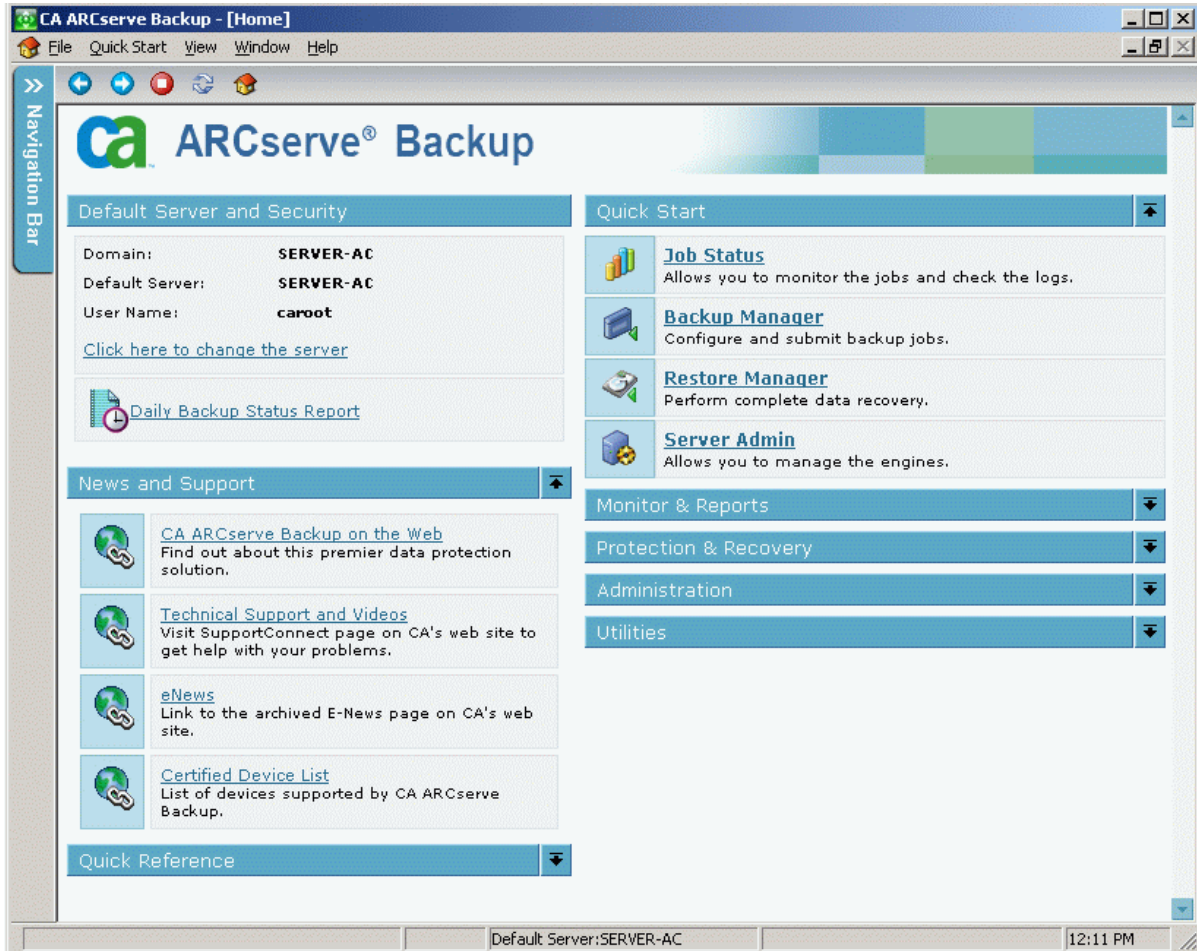


Press the **OK** button to finish.



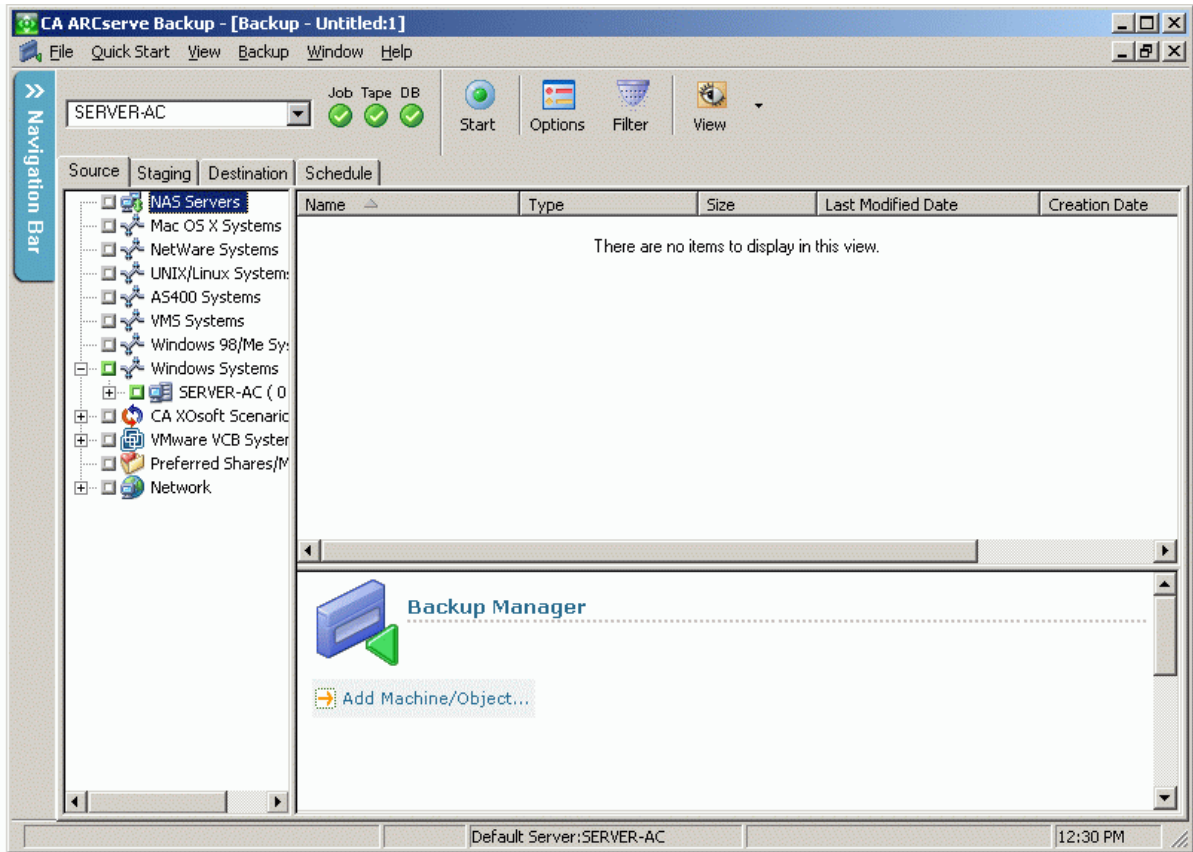
## Performing backup

Launch the **Manager**.

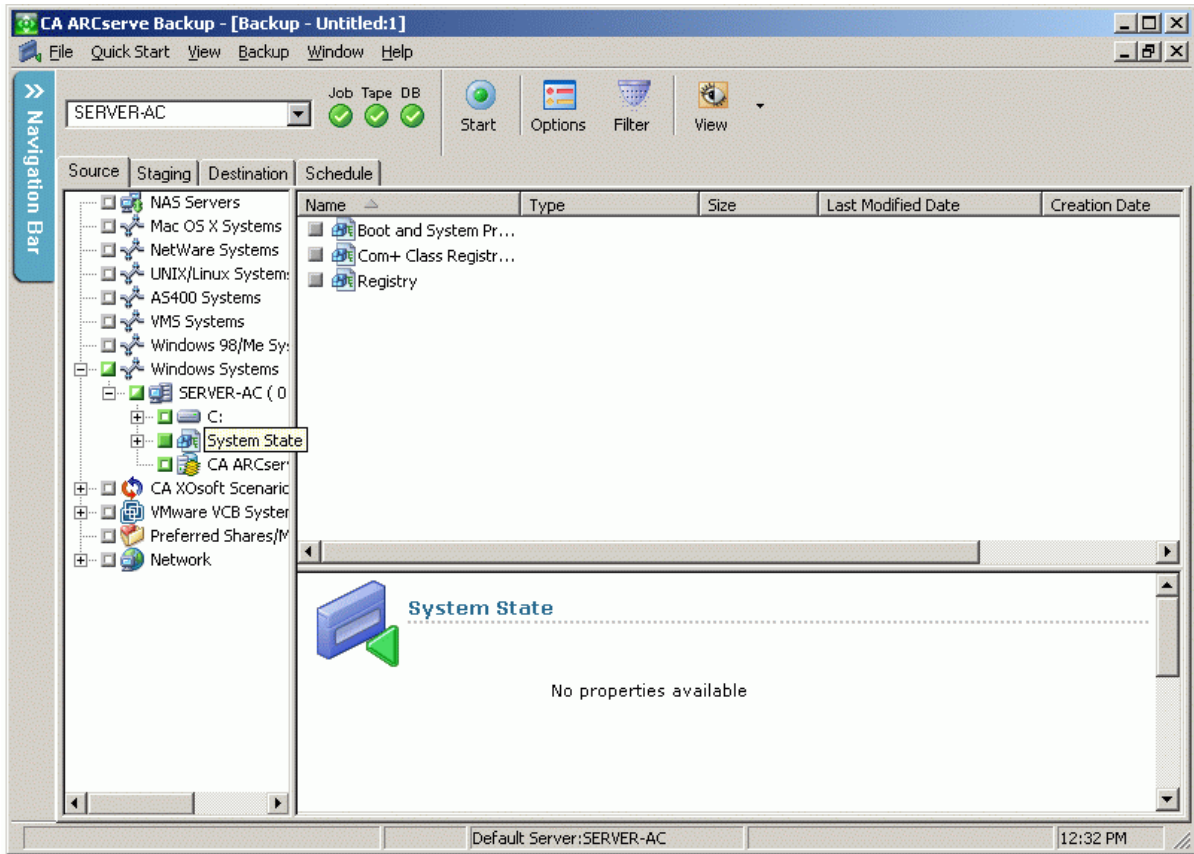


Press the **Backup Manager** button to continue.

A **Backup Manager** window will appear.

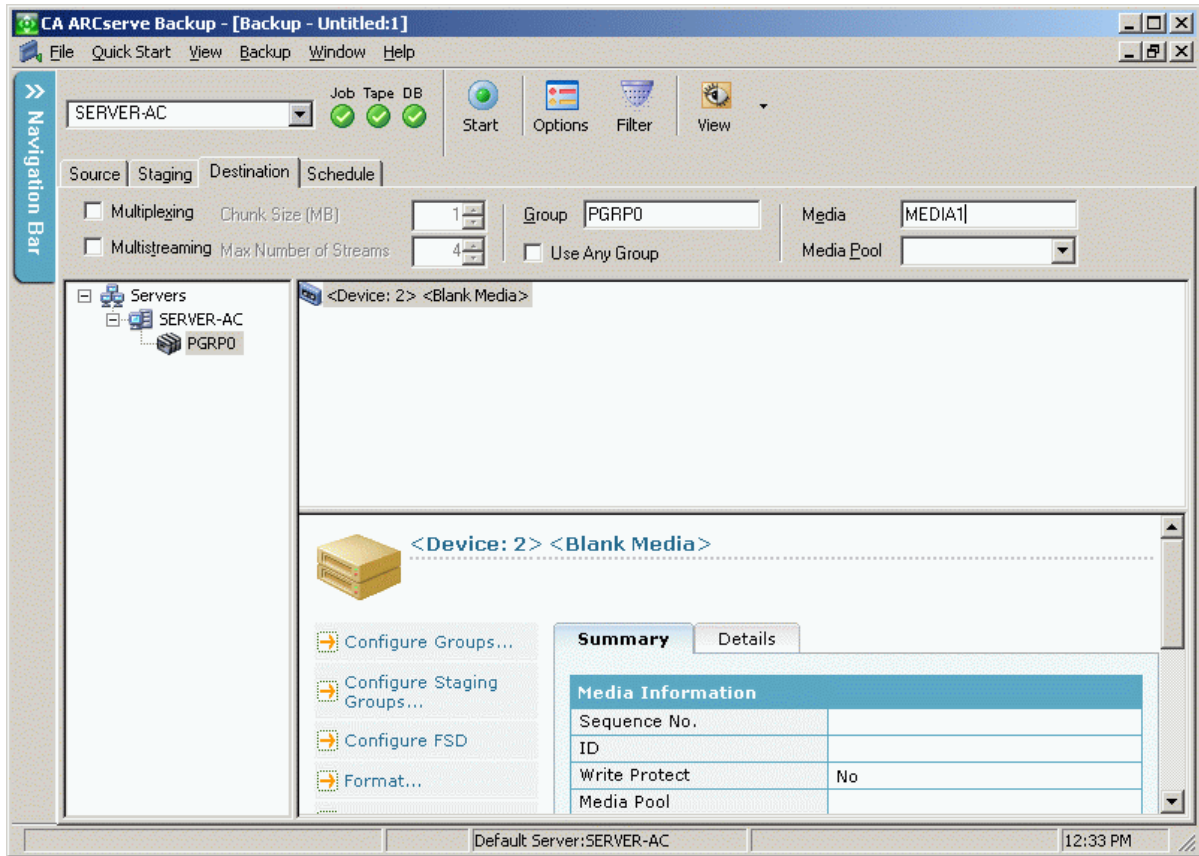


Select the data to be backed up.

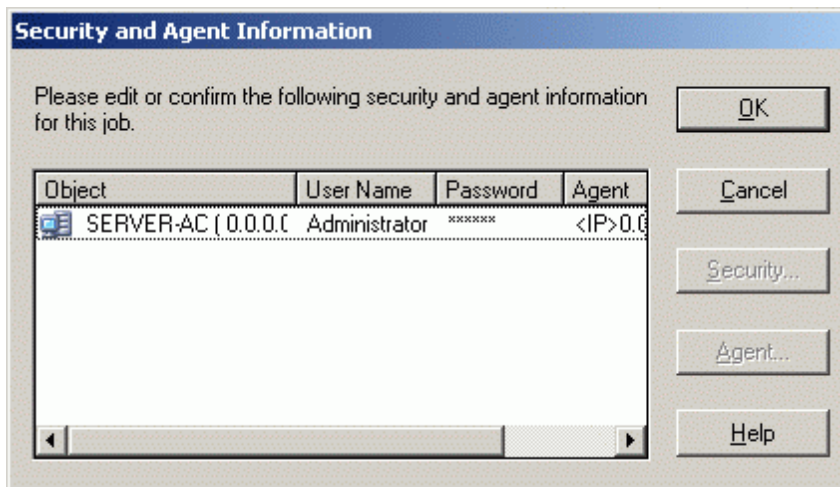


Switch to tab **Destination**.

Select server, group, and enter **Media** name.

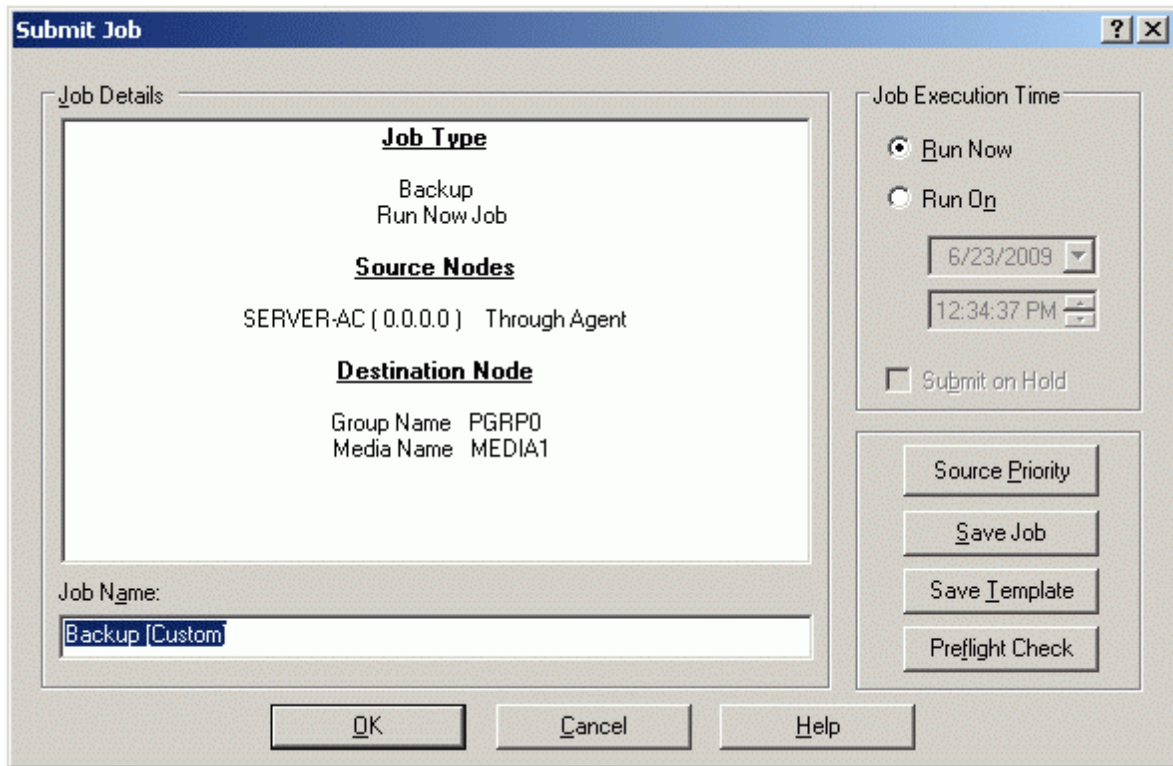


Confirm Security info.



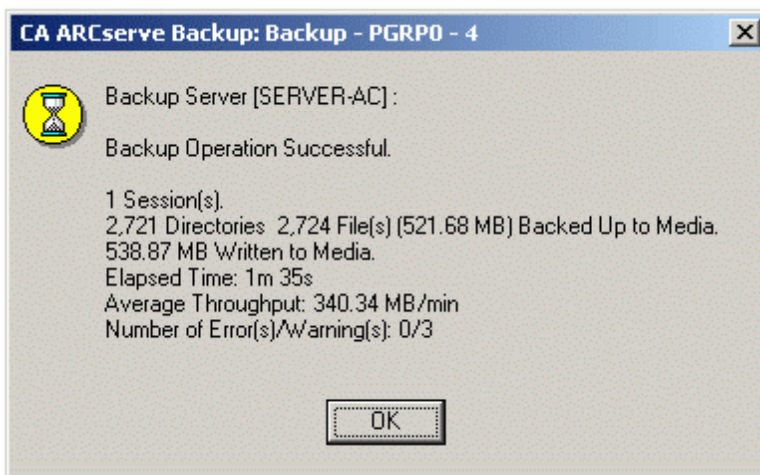
Press the **OK** button to continue.

Select name of backup job.



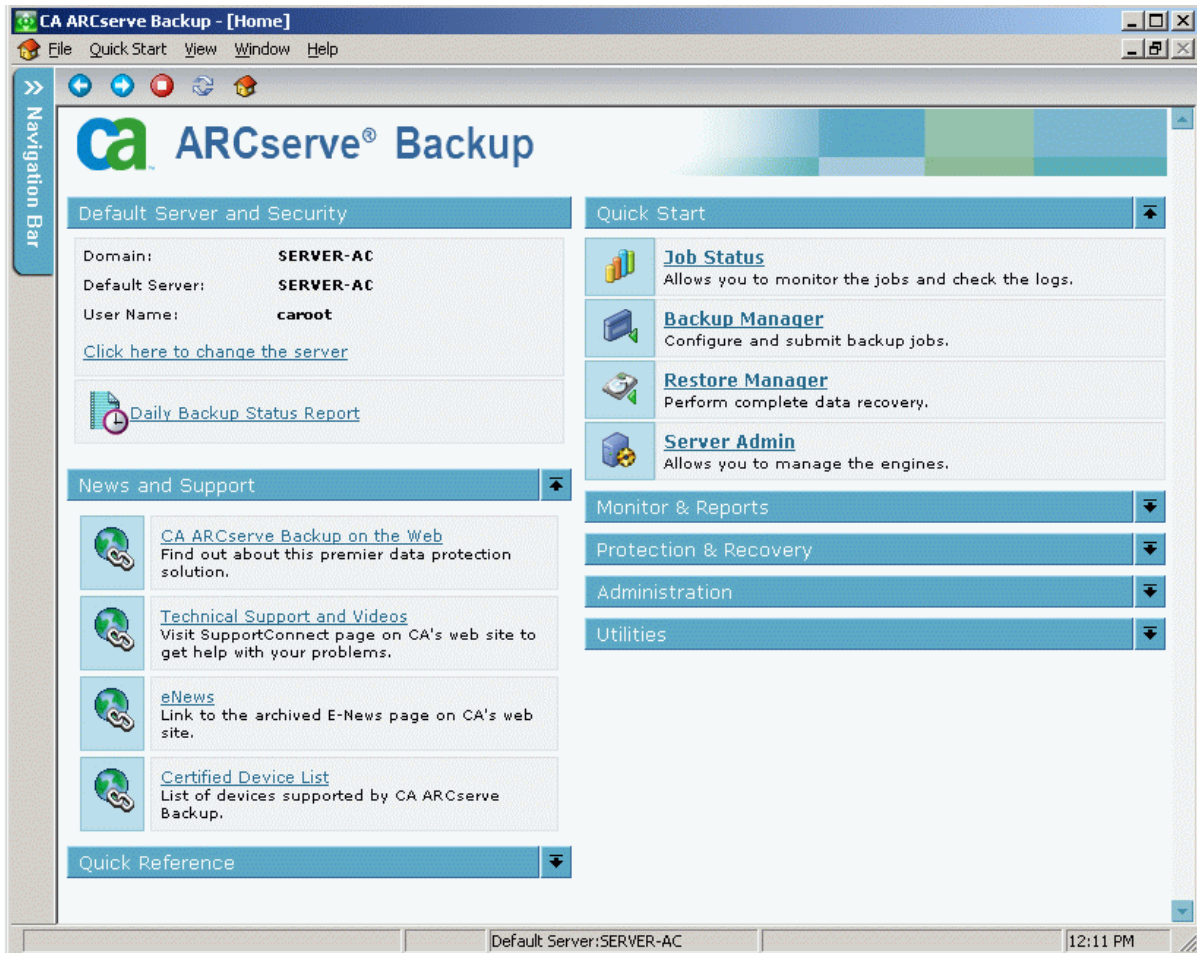
Press the **OK** button to continue.

Backup complete.



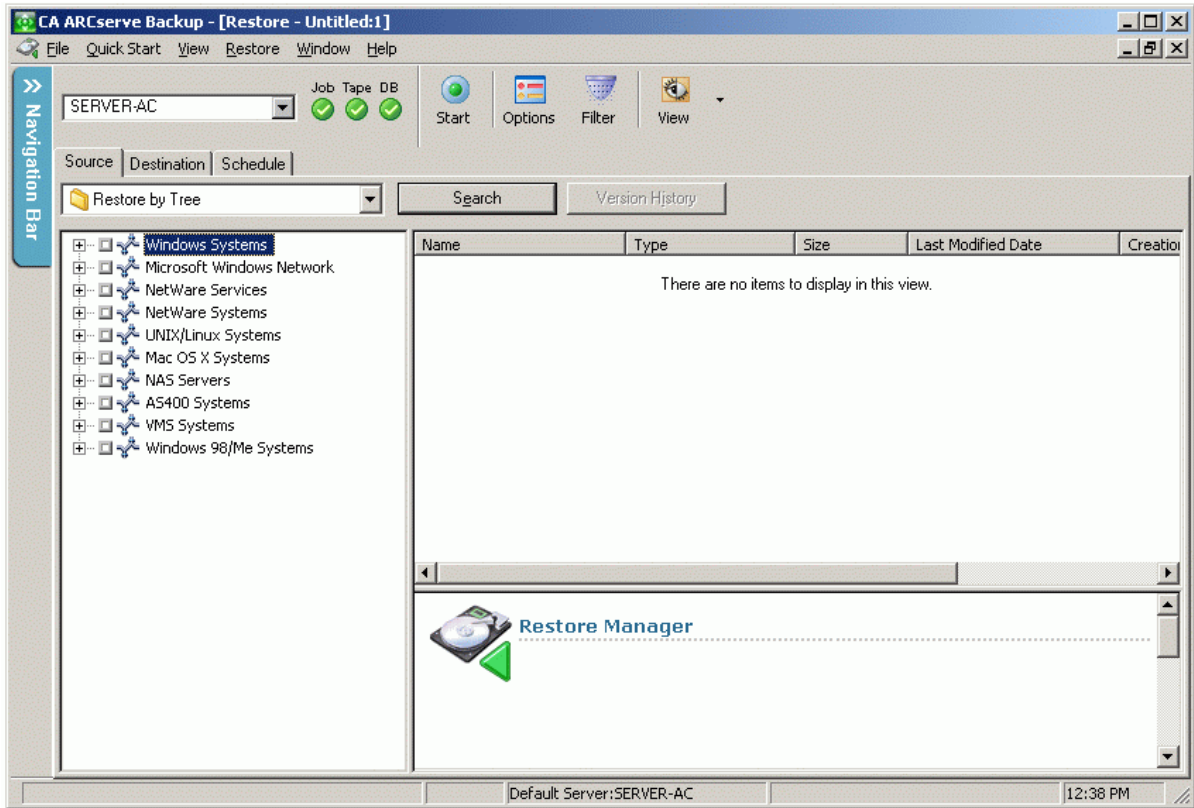
## Restoring data

Launch the **Manager**.

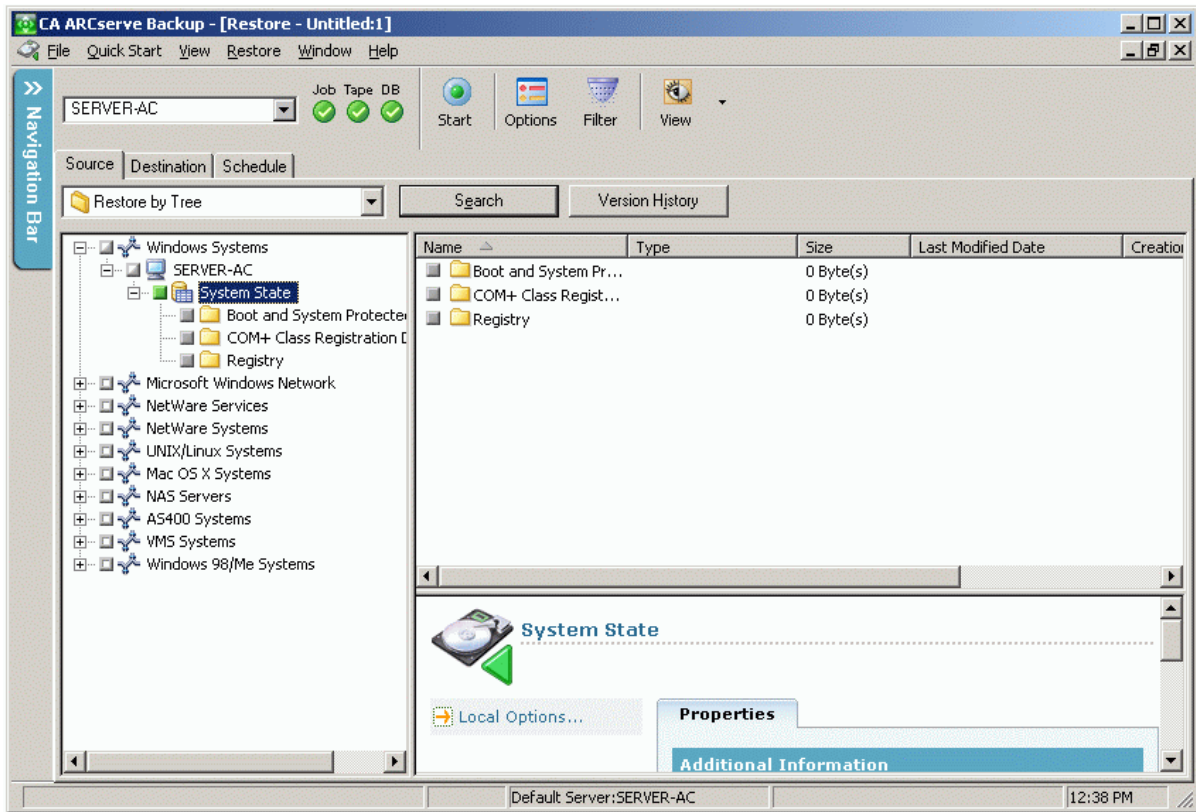


Press the **Restore Manager** button to continue.

Restore wizard window will appear.

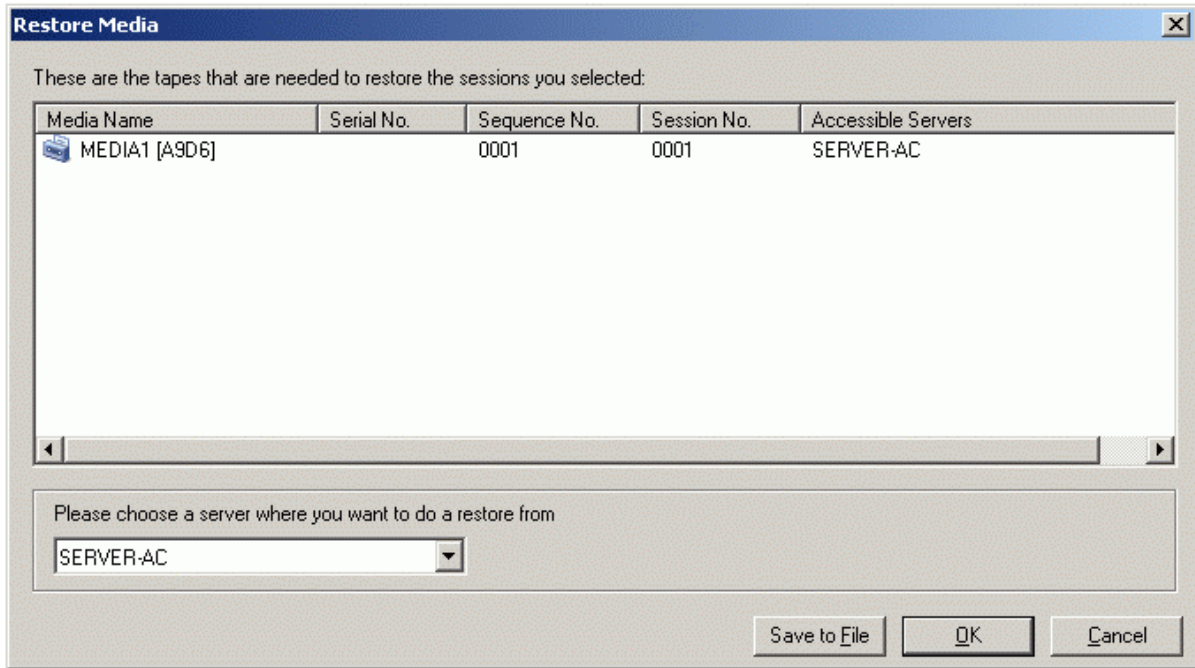


Select the resources to be restored.



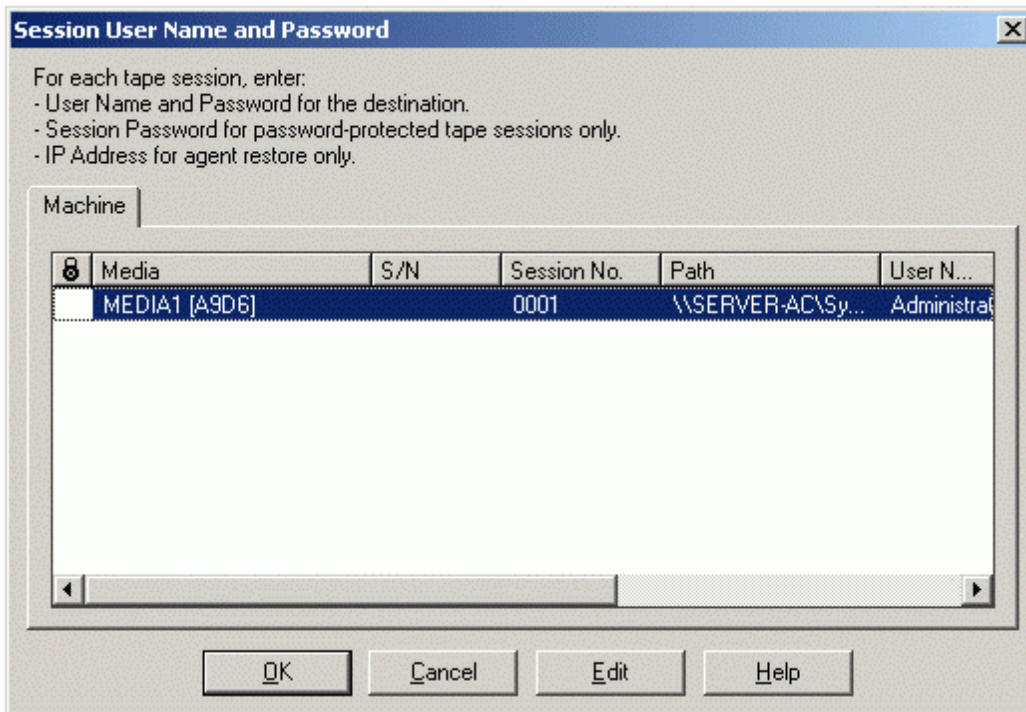
Press the **Start** button to continue.

Confirm the backup source media.



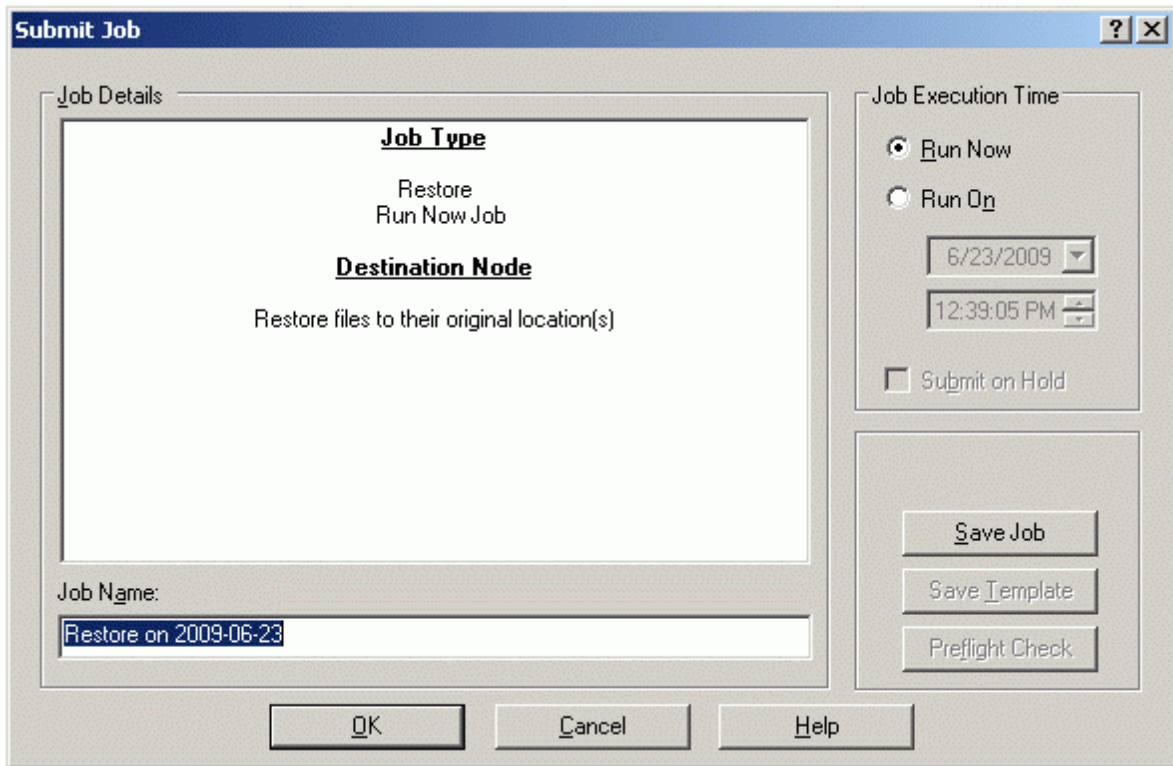
Press the **OK** button to continue.

Confirm user name and password.



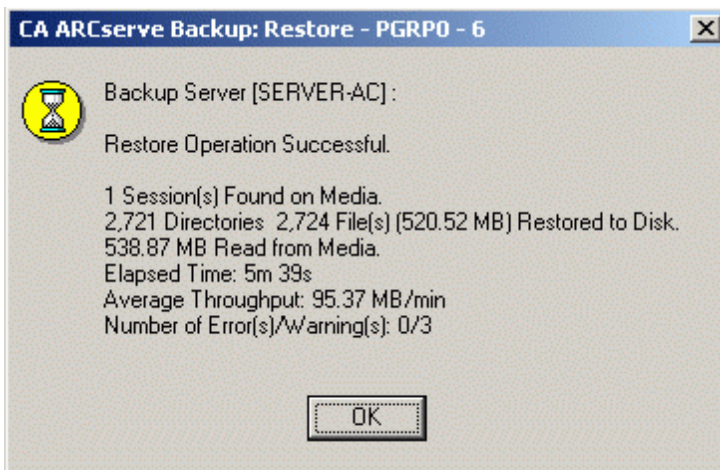
Press the **OK** button to continue.

Select name of restore job.



Press the **OK** button to continue.

Complete the restore job wizard.



Press the **OK** button.

## Conclusion

## Contacts

Support: [www.starwindsoftware.com/support](http://www.starwindsoftware.com/support)

Support Forum: [www.starwindsoftware.com/forums](http://www.starwindsoftware.com/forums)

Sales E-mail: [sales@starwindsoftware.com](mailto:sales@starwindsoftware.com)

## US Headquarters

Direct phone number: 1-617-449-7717

Fax: 1-617-507-5845

## EMEA, APAC

Direct phone numbers: +44-0-2071936727

+44-0-2071936350

Voice Mail: 1-866-790-2646

### **StarWind Software Inc.**

40 Mall Rd., Burlington

MA 01803, USA

[www.starwindsoftware.com](http://www.starwindsoftware.com)