

StarWind iSCSI SAN Software: Virtual Tape Library (Part 2)

www.starwindsoftware.com

Copyright © StarWind Software 2008-2011. All rights reserved.

COPYRIGHT

Copyright © StarWind Software 2008-2011. All rights reserved. No part of this publication may be reproduced, stored in a retrieval system, or transmitted in any form or by any means, electronic, mechanical, photocopying, recording or otherwise, without the prior written consent of StarWind Software.

TRADEMARKS

“StarWind”, “StarWind Software” and the StarWind and the StarWind Software logos are trademarks of StarWind Software which may be registered in some jurisdictions. All other trademarks are owned by their respective owners.

CHANGES

The material in this document is for information only and is subject to change without notice. While reasonable efforts have been made in the preparation of this document to assure its accuracy, StarWind Software assumes no liability resulting from errors or omissions in this document, or from the use of the information contained herein. StarWind Software reserves the right to make changes in the product design without reservation and without notification to its users.

TECHNICAL SUPPORT AND SERVICES

If you have questions about installing or using this software, check this and other documents first - you will find answers to most of your questions here or there. If you need further assistance, please contact us.

Table of Contents

Introduction.....	4
Configuring StarWind Server and iSCSI Client.....	6
Symantec Backup Exec	7
Configuring Symantec Backup Exec	7
Performing backup	27
Restoring data	37
Conclusion.....	47

Guide

Introduction

StarWind Software Inc. StarWind allows you to create Virtual Tape Devices and Tape Libraries based upon hard disk storage. A Virtual Tape Device is a special hard drive file that's made available to your network that is normally used for file backup and recovery purposes.

By enabling virtualized hard drive space as a Tape Device, Backup Managers are able to integrate VTLs with existing backup software and current backup and recovery processes and procedures. It also enables the "backup to disk" functionality that many older backup software versions do not support. This prevents unnecessary and costly backup software upgrades.

Starwinds VTL solution allows Backup Managers to store backup data on inexpensive PATA and SATA hard drive systems, instead of having to use expensive tapes and tape drive systems. And by backing up your data to disk instead of tapes, VTLs will most often increase performance for both backup and restore operations. Scalability is increased by using RAID array enclosures to host and store your VTLs, by allowing the addition of more hard drives and/or enclosures to increase overall storage capacity.

This document provides step-by-step instructions on using **StarWind** virtual tape devices.

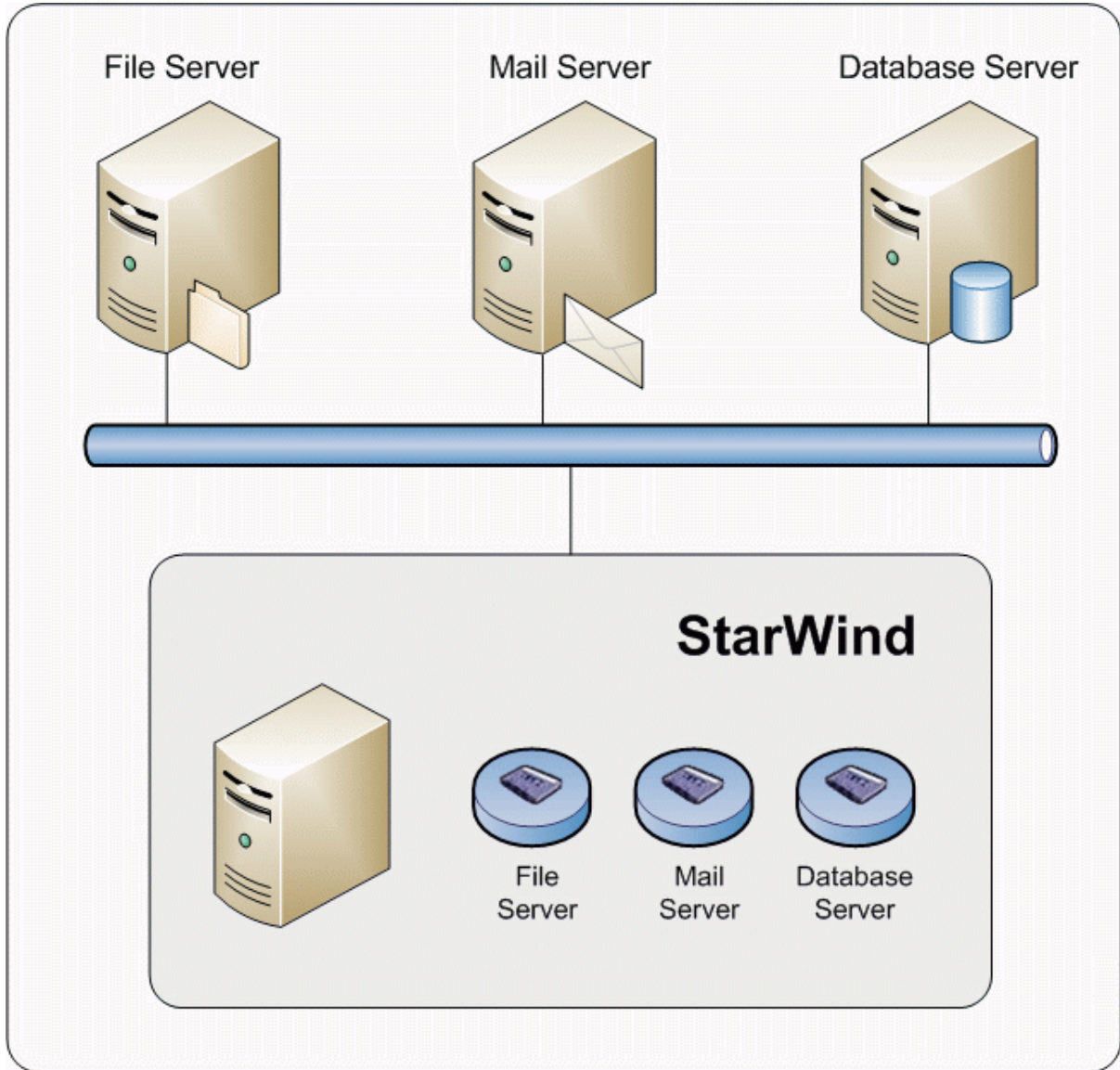


Figure 1. StarWind provides virtual tape devices

Configuring StarWind Server and iSCSI Client

Preparing Virtual Tape Device

Please refer to **Preparing Virtual Tape Device** section of **StarWind iSCSI Target for Microsoft Windows : Virtual Tape Library (Part 1)** guide.

Install StarWind VTL Tape Driver

Please refer to **Install StarWind VTL Tape Driver** section of **StarWind iSCSI Target for Microsoft Windows : Virtual Tape Library (Part 1)** guide.

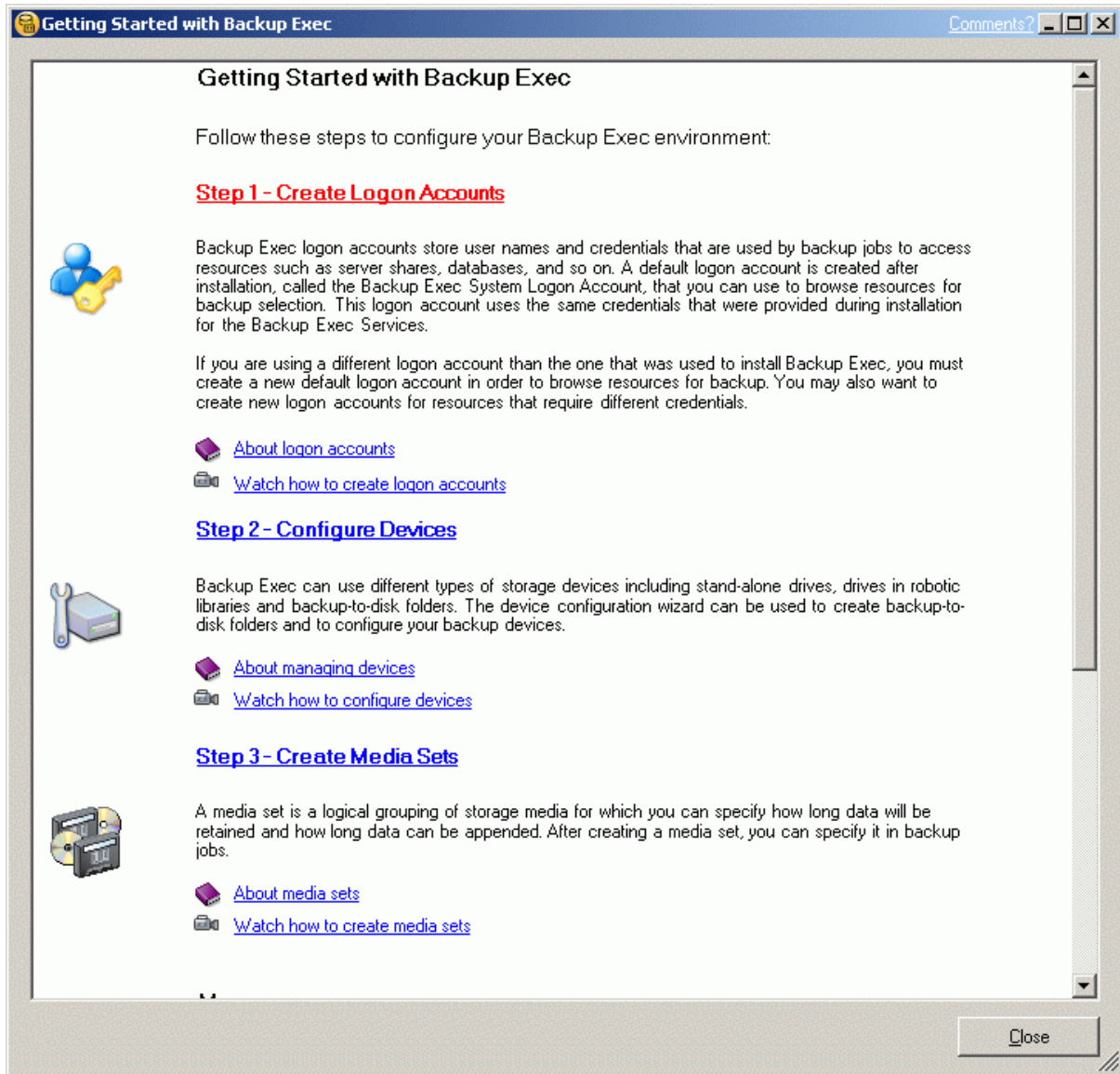
Connect the Target

Please refer to **Connect the Target** section of **StarWind iSCSI Target for Microsoft Windows : Virtual Tape Library (Part 1)** guide.

Symantec Backup Exec

Configuring Symantec Backup Exec

The Getting Started Wizard appears when Symantec Backup Exec has not previously been started.



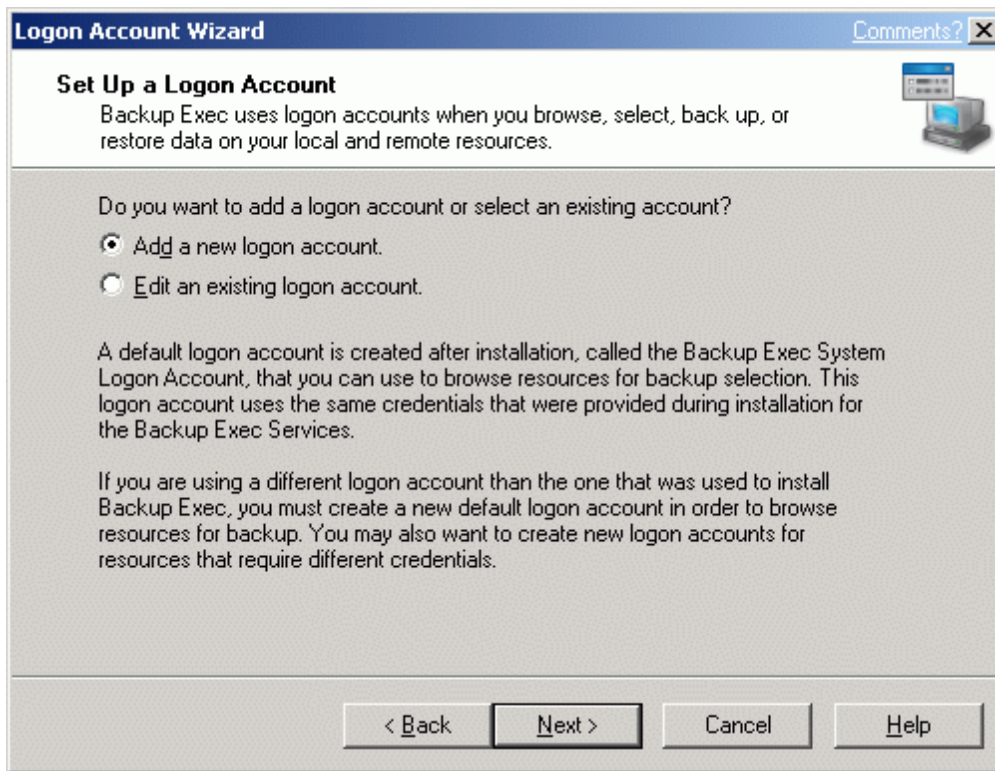
Click on the "Step 1 - Create Logon Accounts"

A Logon Account Wizard window will appear.



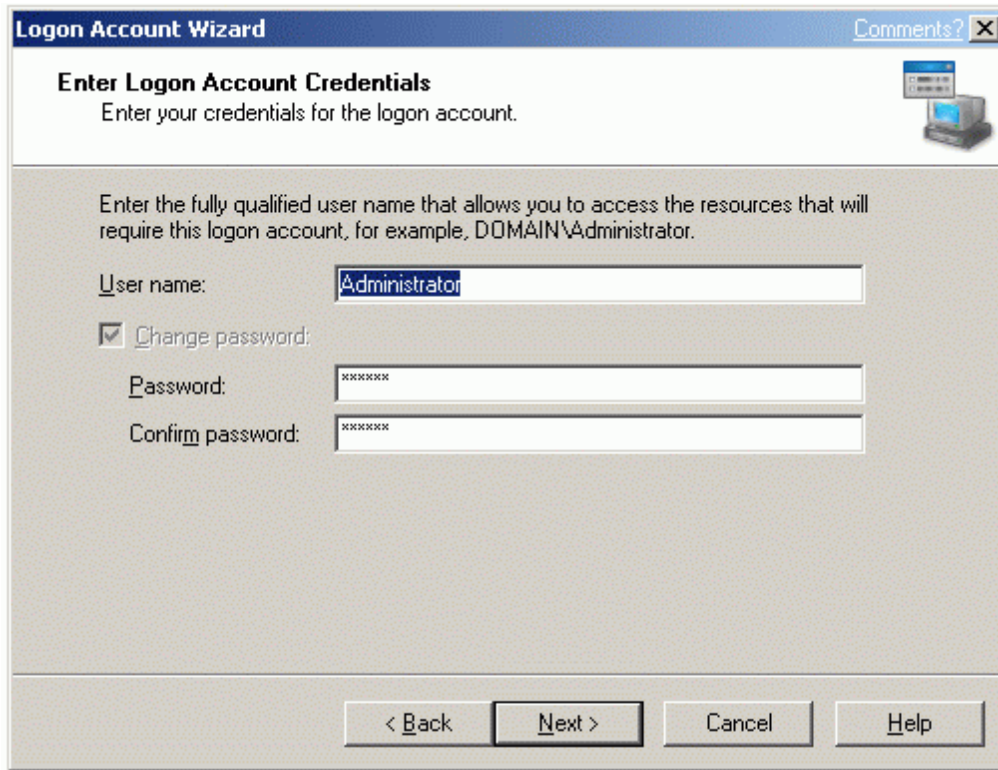
Press the **Next** button to continue.

Select the "Add a new logon account" option.



Press the **Next** button to continue.

Enter the credentials for the user.



Logon Account Wizard Comments? X

Enter Logon Account Credentials
Enter your credentials for the logon account.

Enter the fully qualified user name that allows you to access the resources that will require this logon account, for example, DOMAIN\Administrator.

User name: Administrator

Change password:

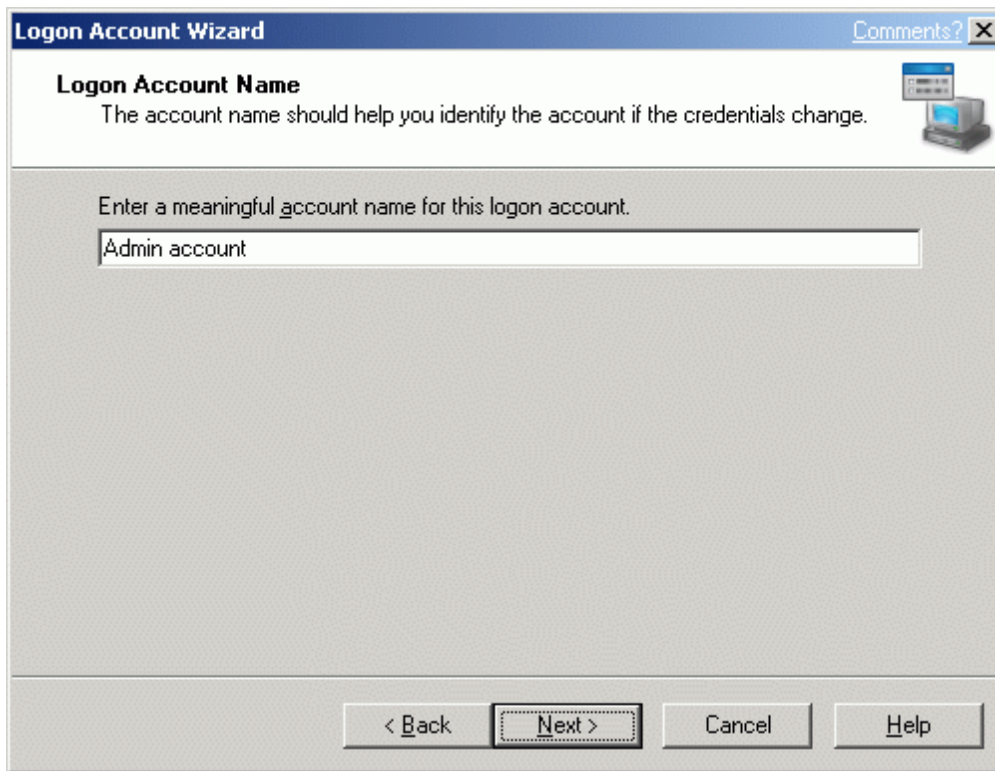
Password: *****

Confirm password: *****

< Back Next > Cancel Help

Press the **Next** button to continue.

Type a meaningful account name for this logon account.



Logon Account Wizard Comments? X

Logon Account Name
The account name should help you identify the account if the credentials change.

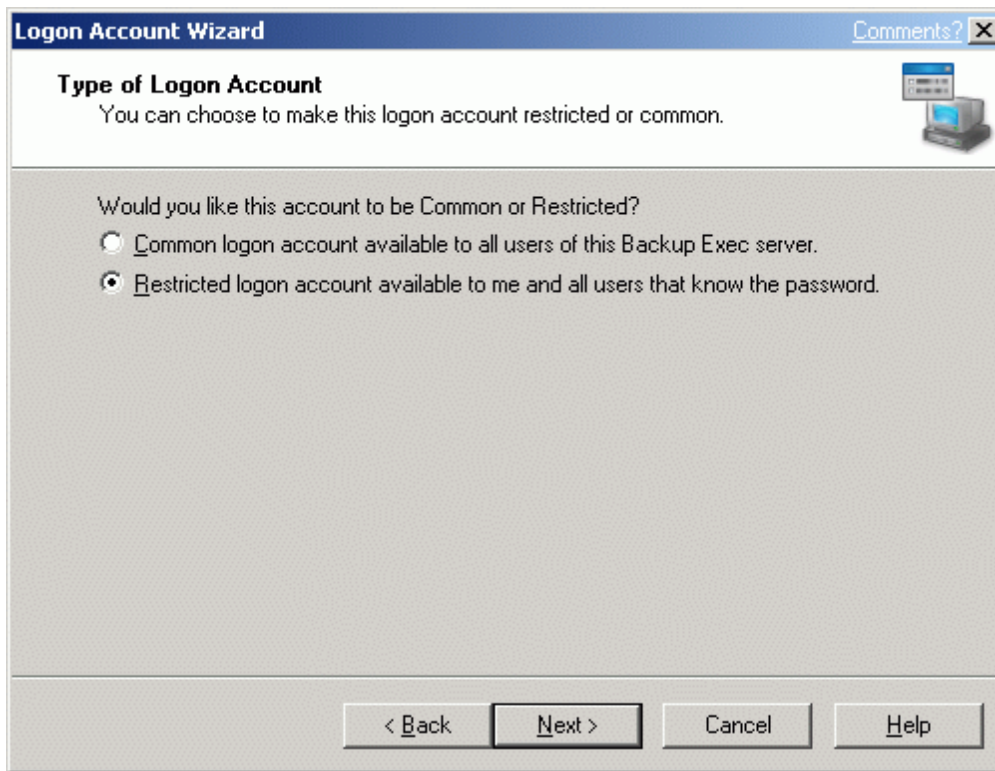
Enter a meaningful account name for this logon account.

Admin account

< Back Next > Cancel Help

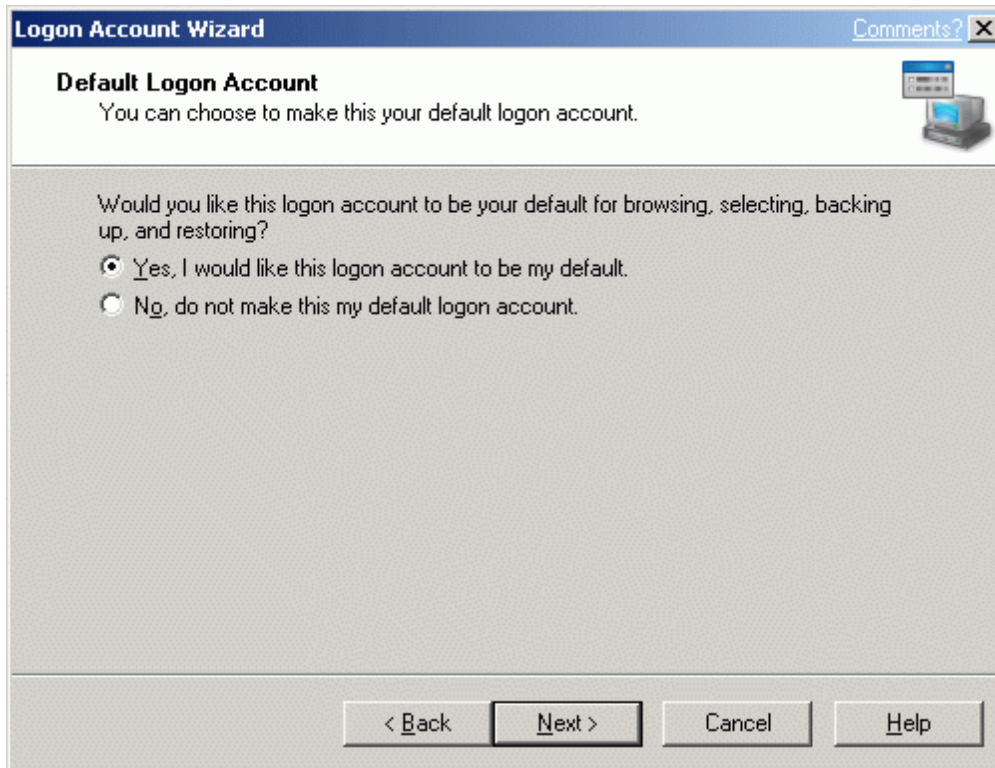
Press the **Next** button to continue.

Choose to make logon account restricted or common.



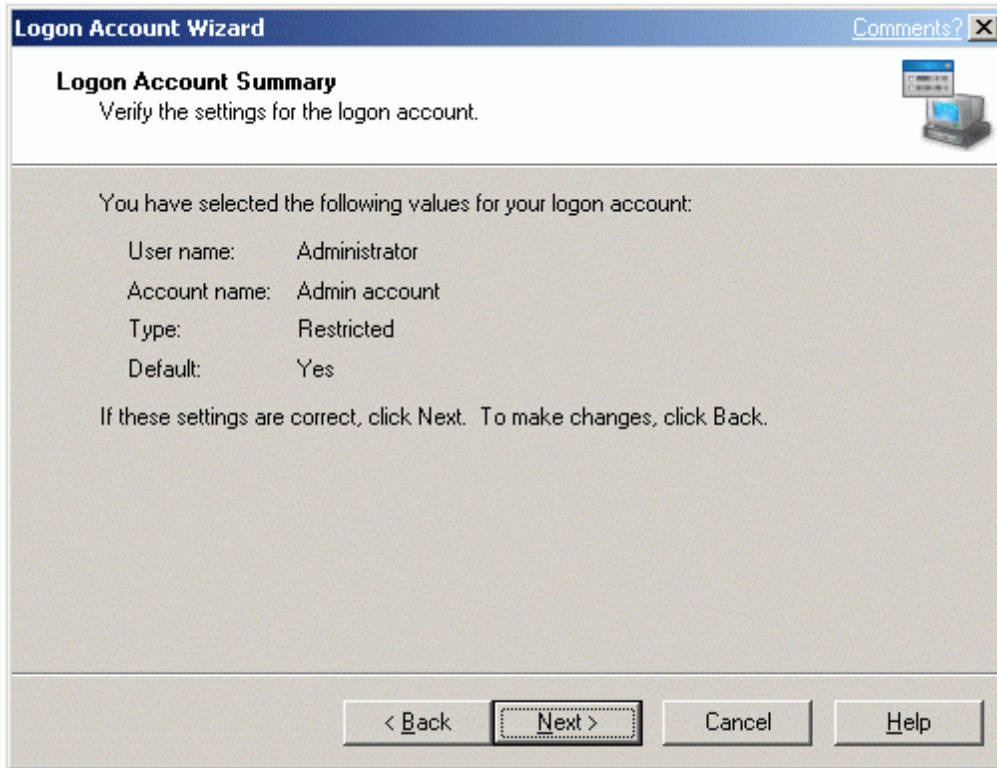
Press the **Next** button to continue.

Select if the account should be a default one.



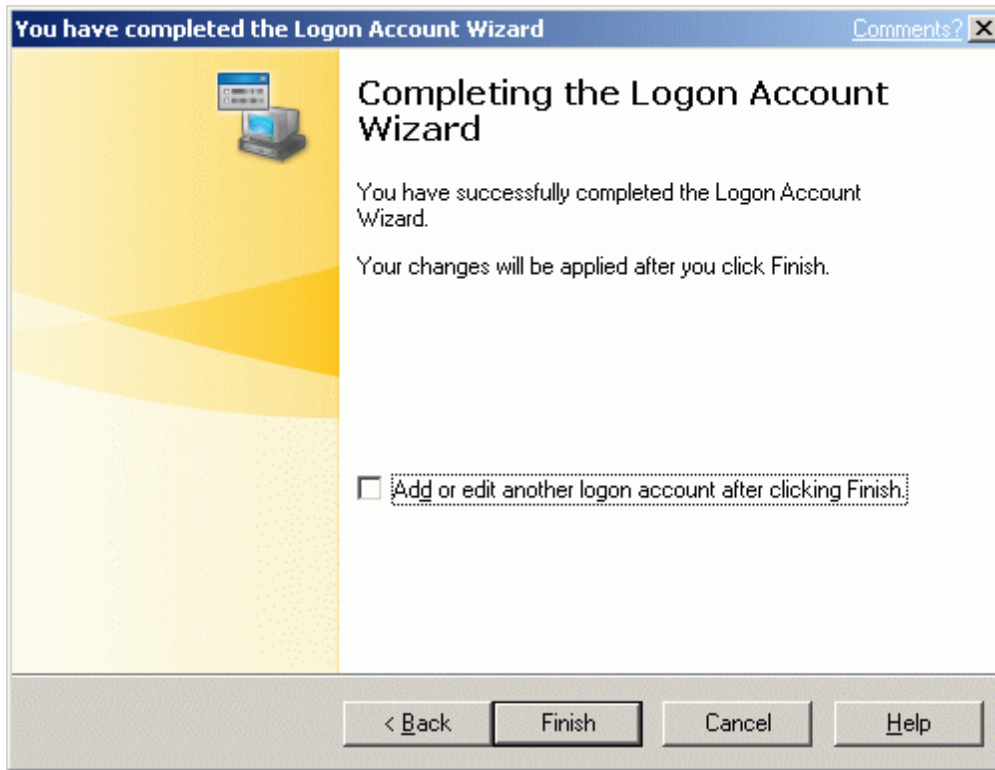
Press the **Next** button to continue.

Verify the settings for the logon account. Press the **Back** button if changes are required.



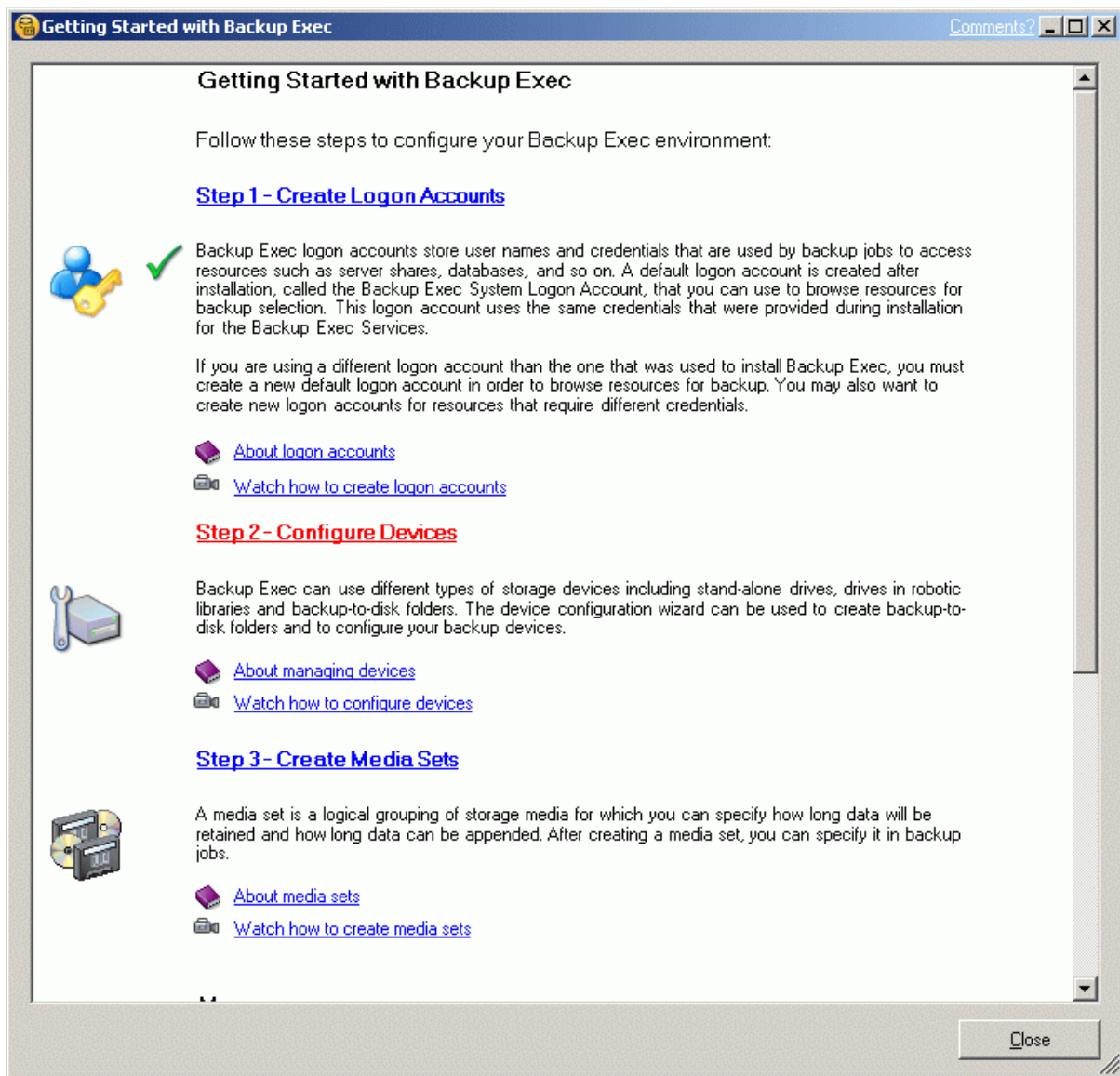
Press the **Next** button to continue.

Optionally Check the **Add...** checkbox to add another logon account.



Press the **Finish** button.

You will be returned back to the Getting started page.



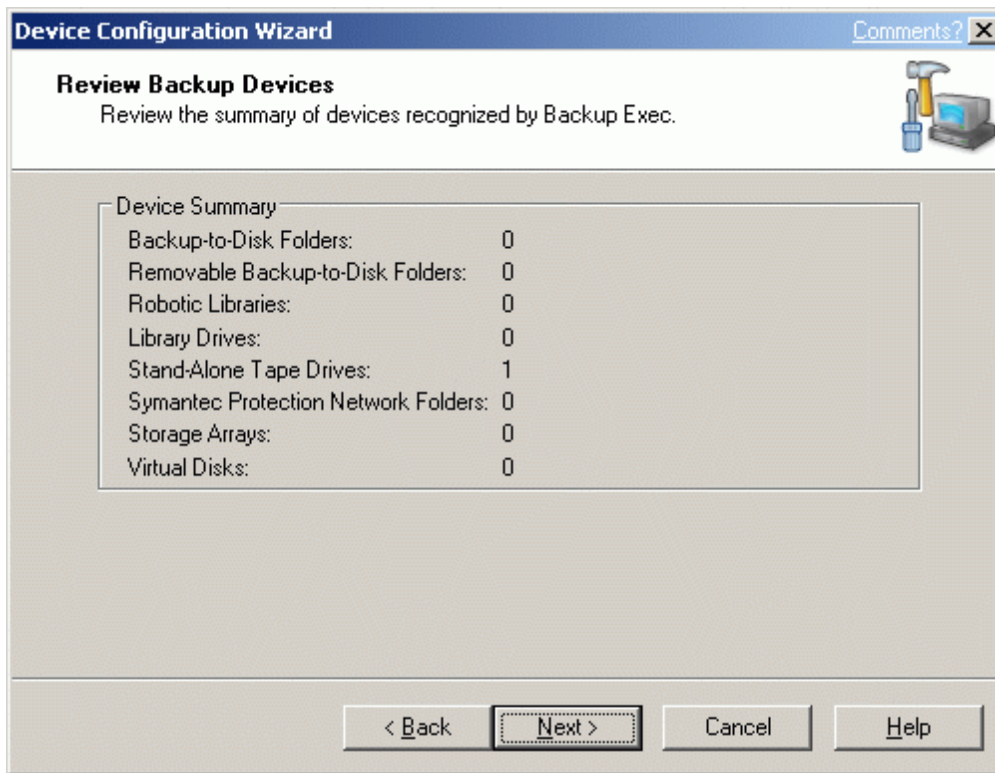
Click on the "Step 2 - Configure Devices"

The Device Configuration Wizard window will appear.



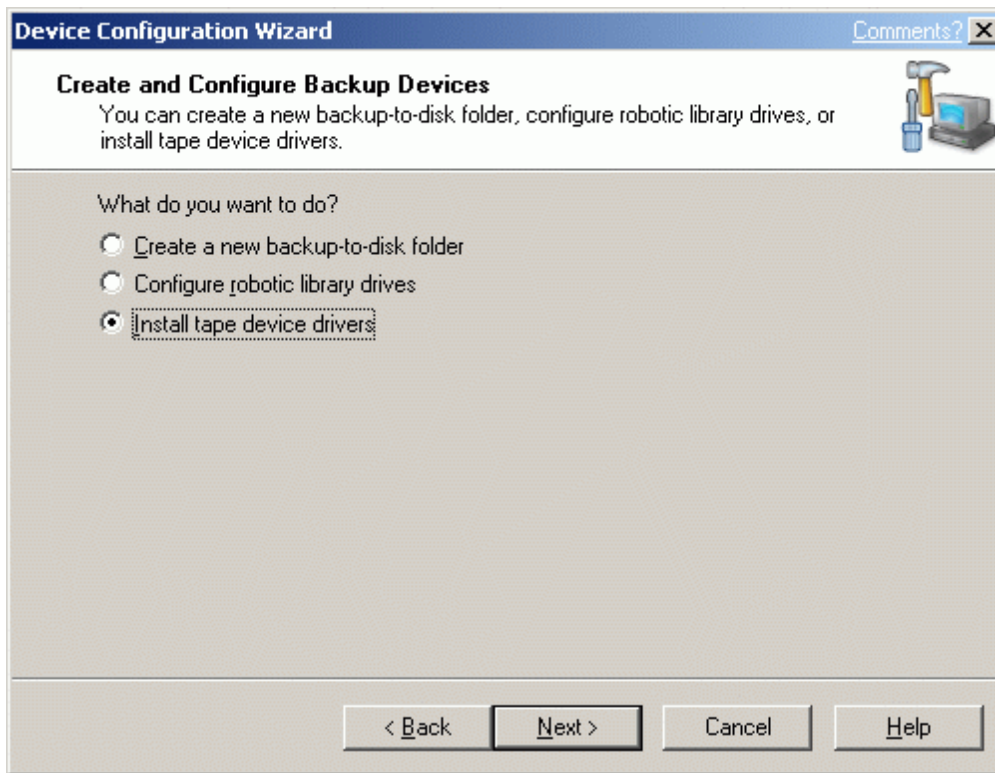
Press the **Next** button.

Backup Exec will review the devices available for performing backups.



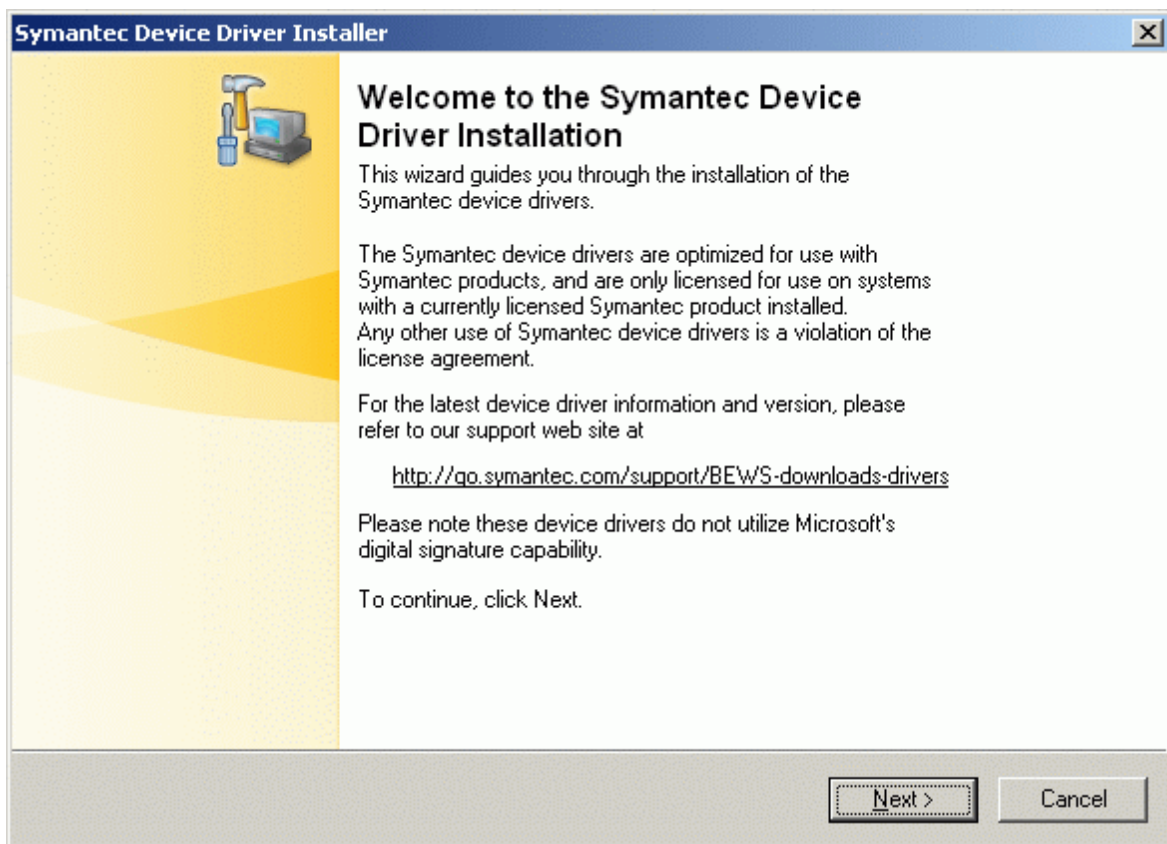
Press the **Next** button.

Select the "Install tape device drivers" option.



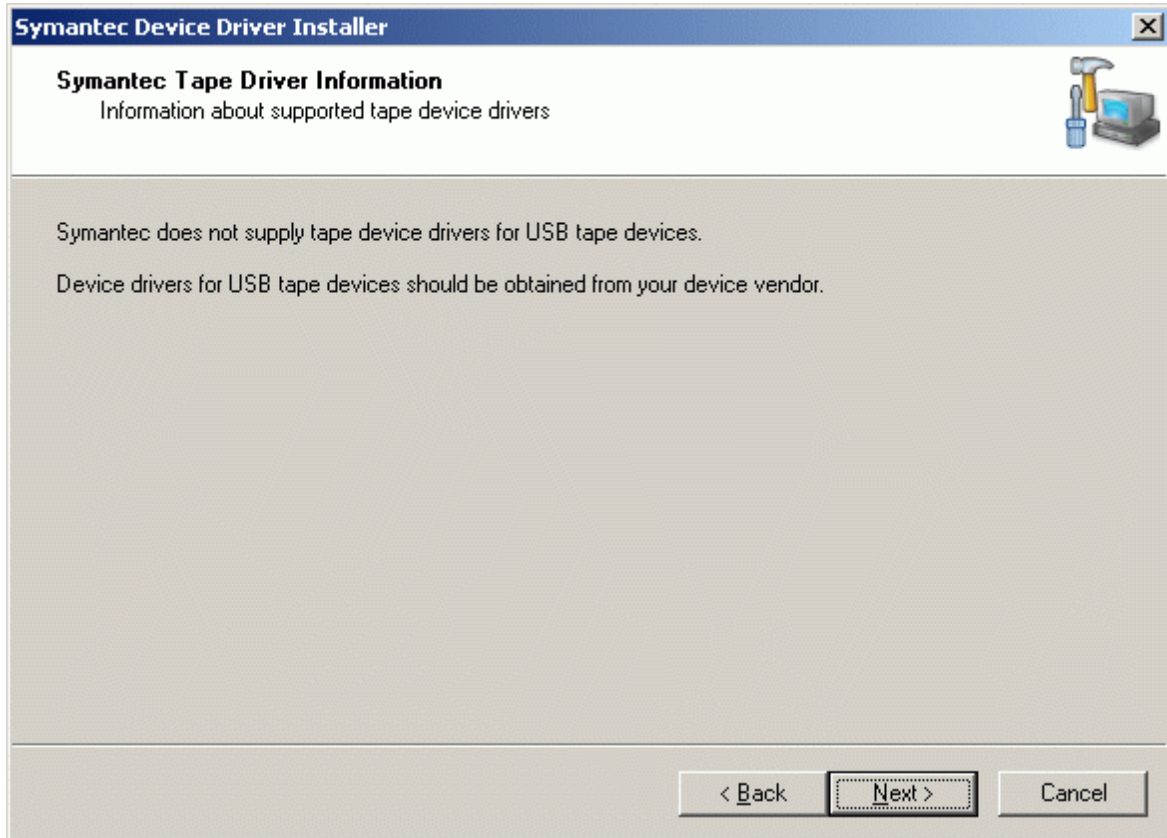
Press the **Next** button.

Driver Installer window will appear.



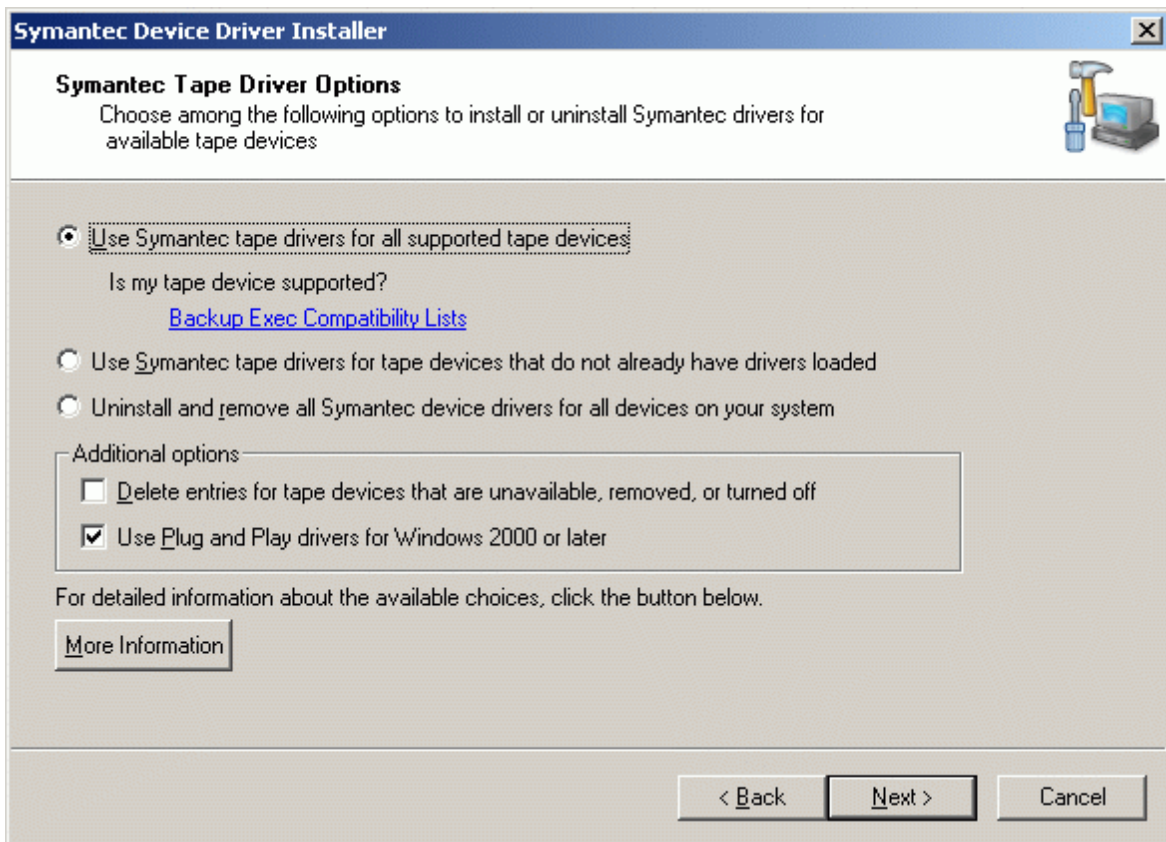
Press the **Next** button.

Installer warns that driver does not support USB tape drives, if you are using one - refer to the device vendors for the drivers.



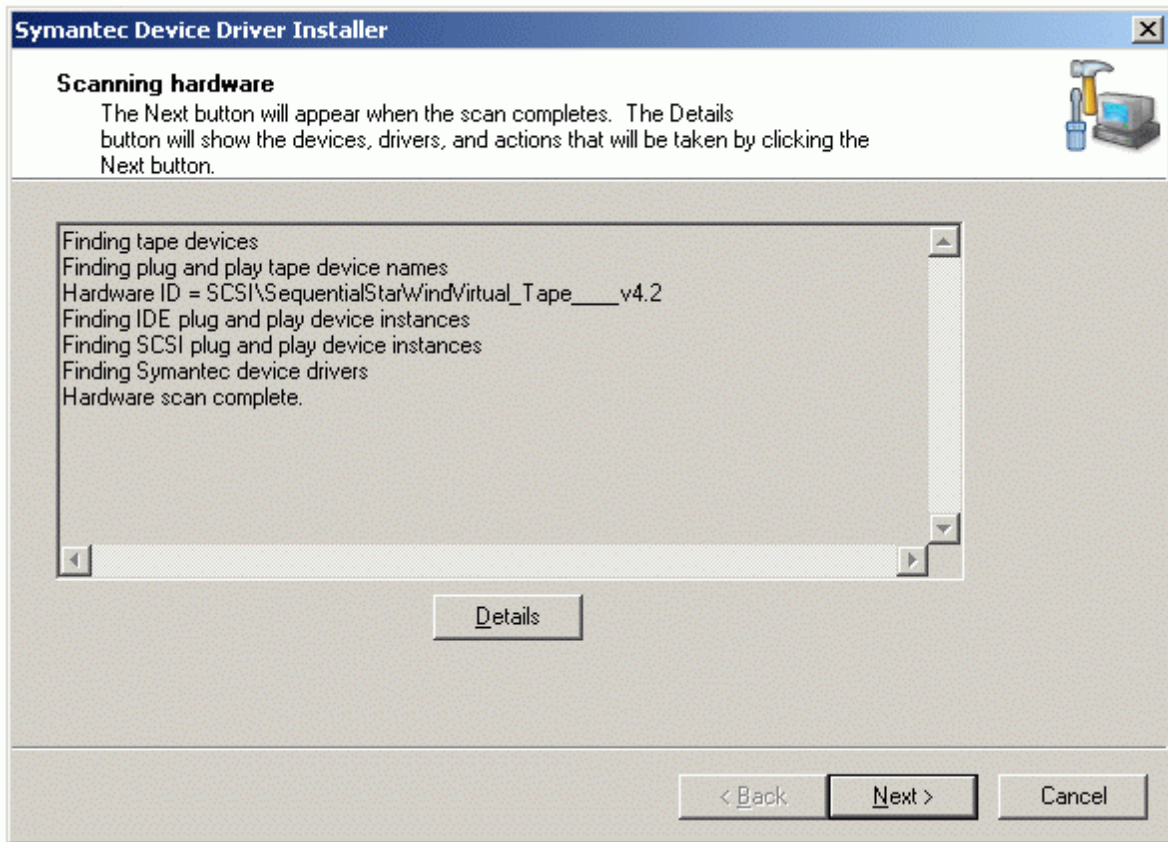
Press the **Next** button to continue or close the wizard and install the drivers manually if you're using a **USB** tape drive.

Select "Use Symantec tape drivers for all supported tape devices".



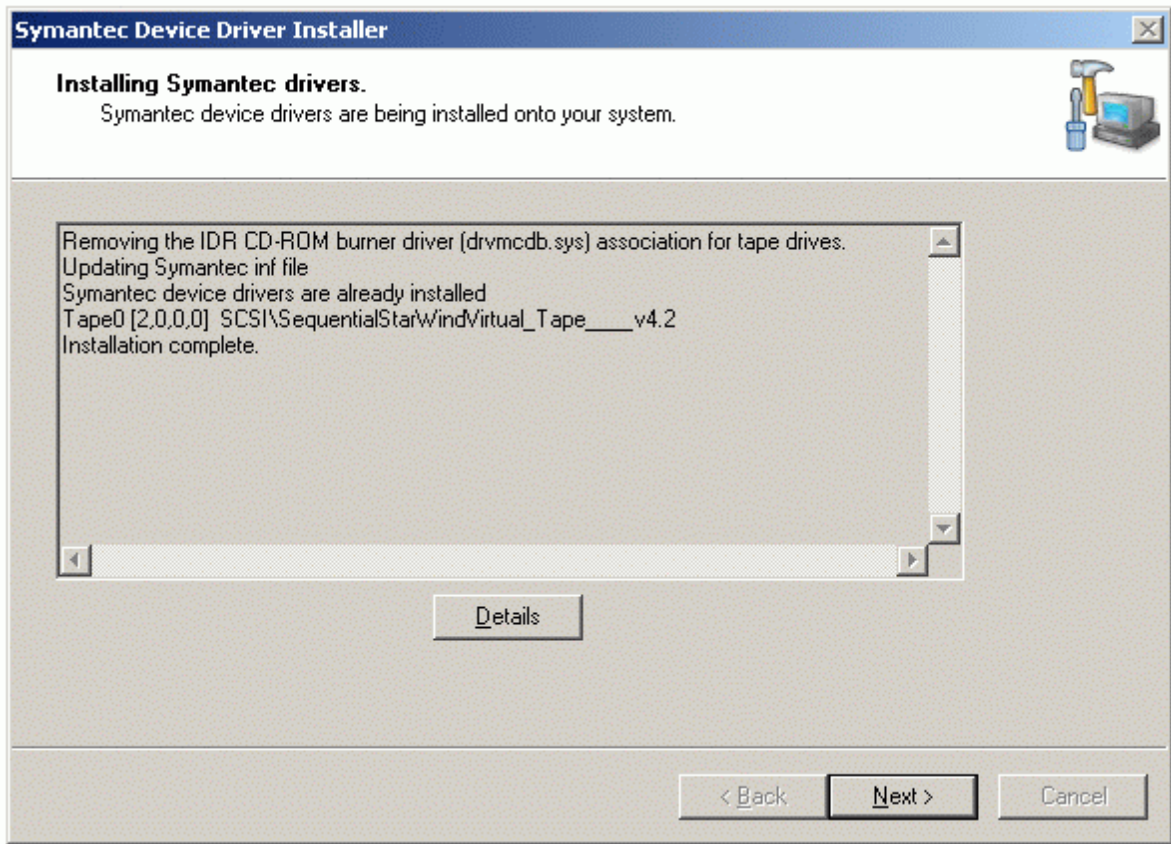
Press the **Next** button.

The installer will scan your system for supported tape drives.



Press the **Next** button.

The installer indicates the drivers have been successfully installed.



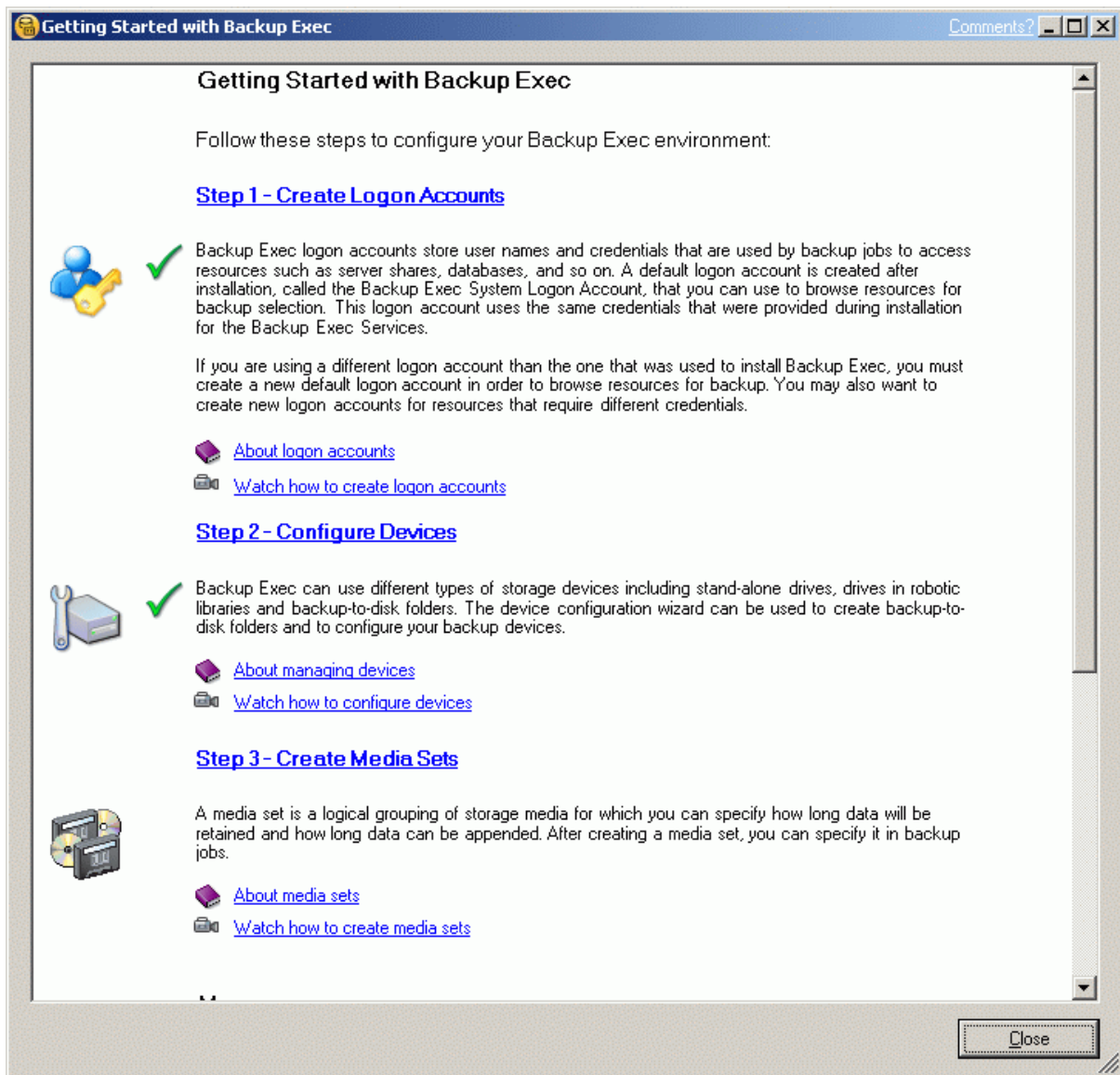
Press the **Next** button.

Driver installation is complete.



Press the **Finish** button to continue.

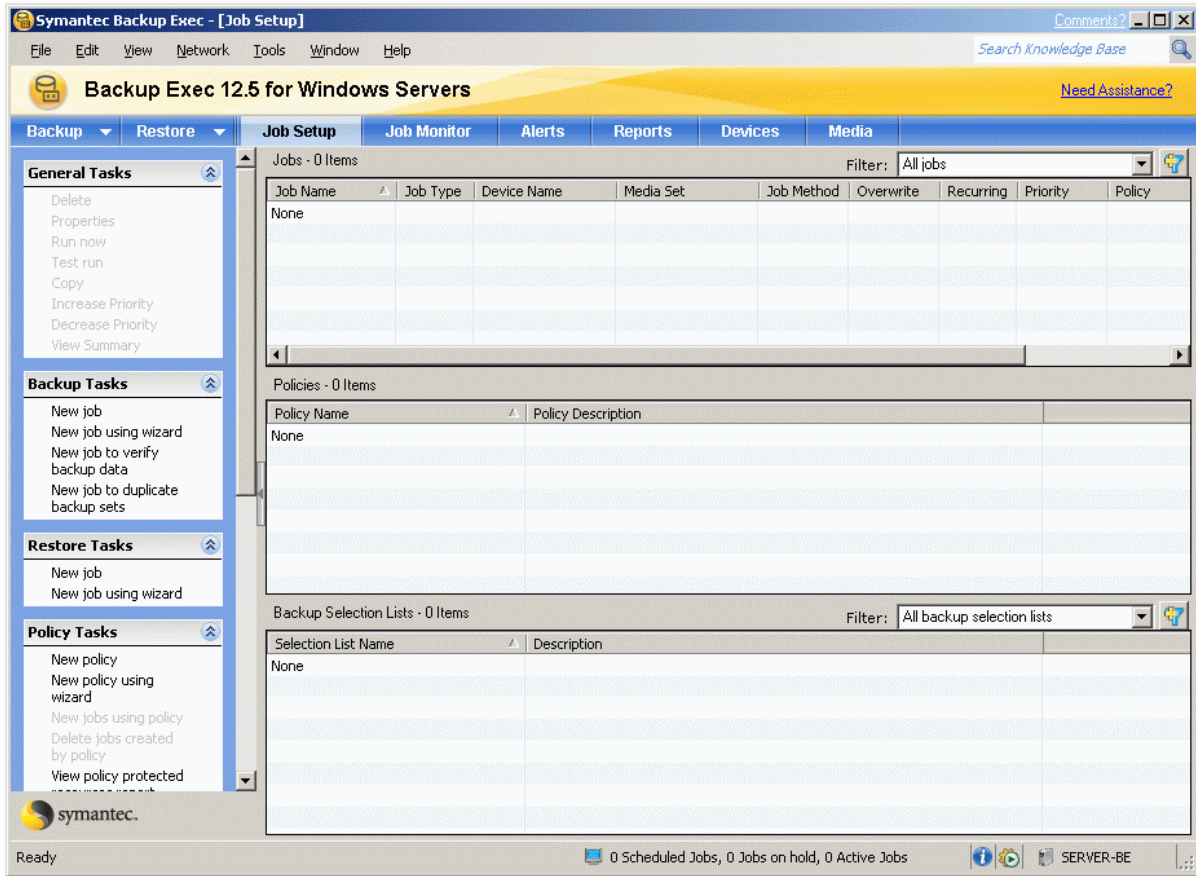
Once again you will be returned to the Getting Started window.



Close the window.

Performing backup

Open the BackupExec application.



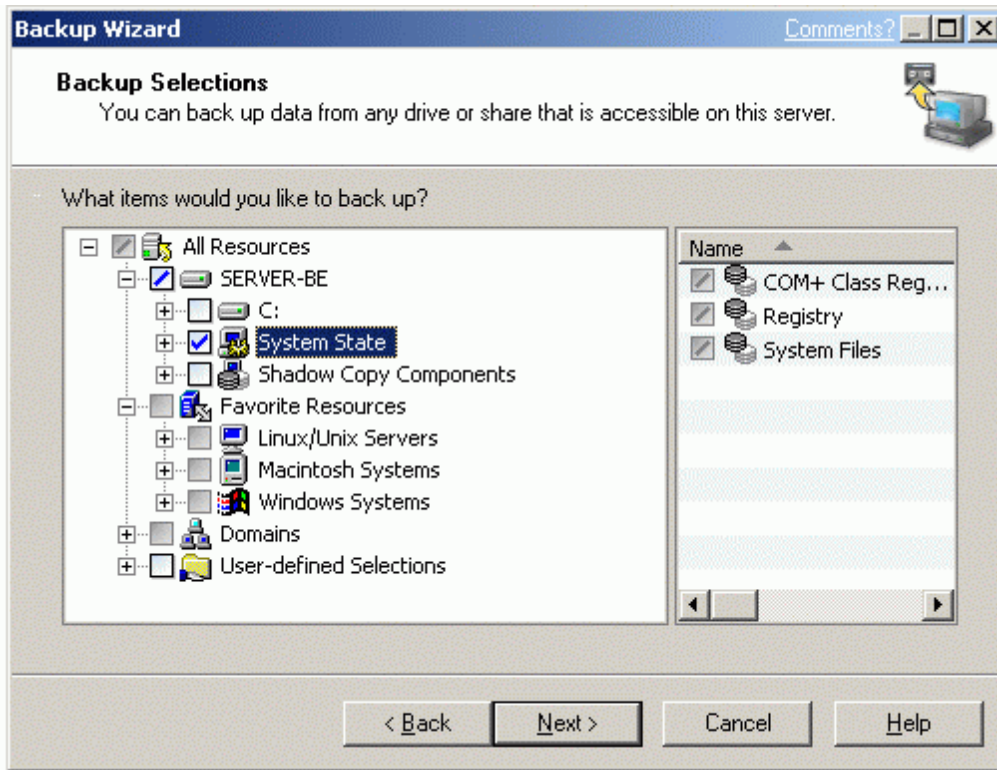
Press the **Backup** button to continue.

A Backup wizard window will appear.
Select the "Create a backup job with custom settings"



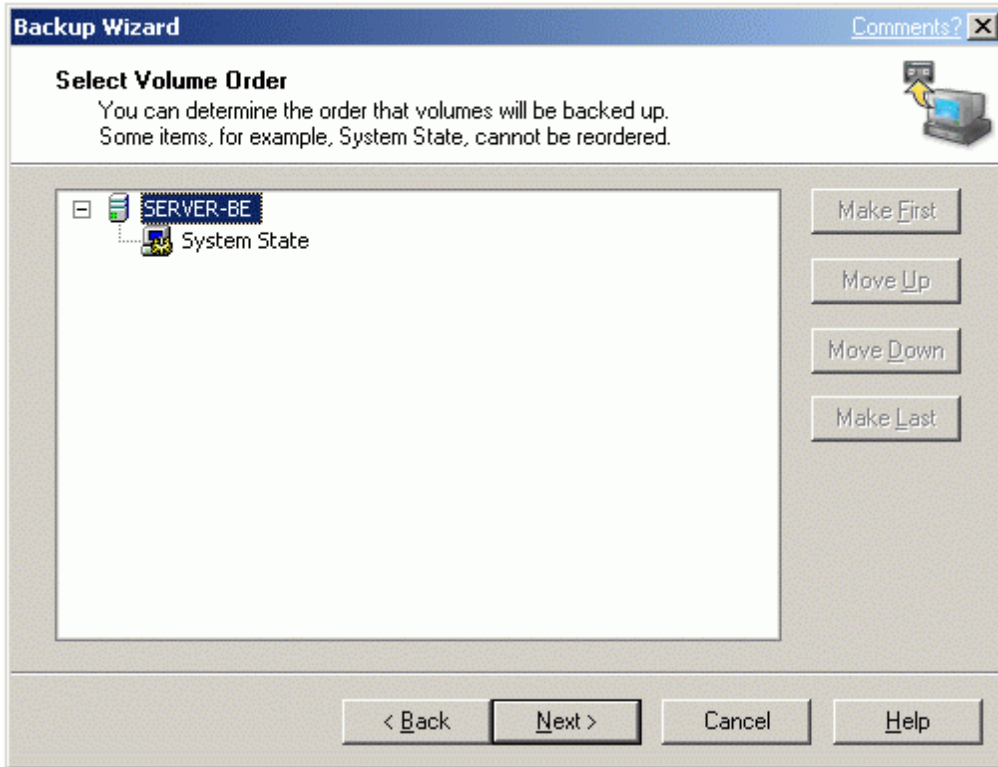
Press the **Next** button to continue.

Select the data to be backed up.



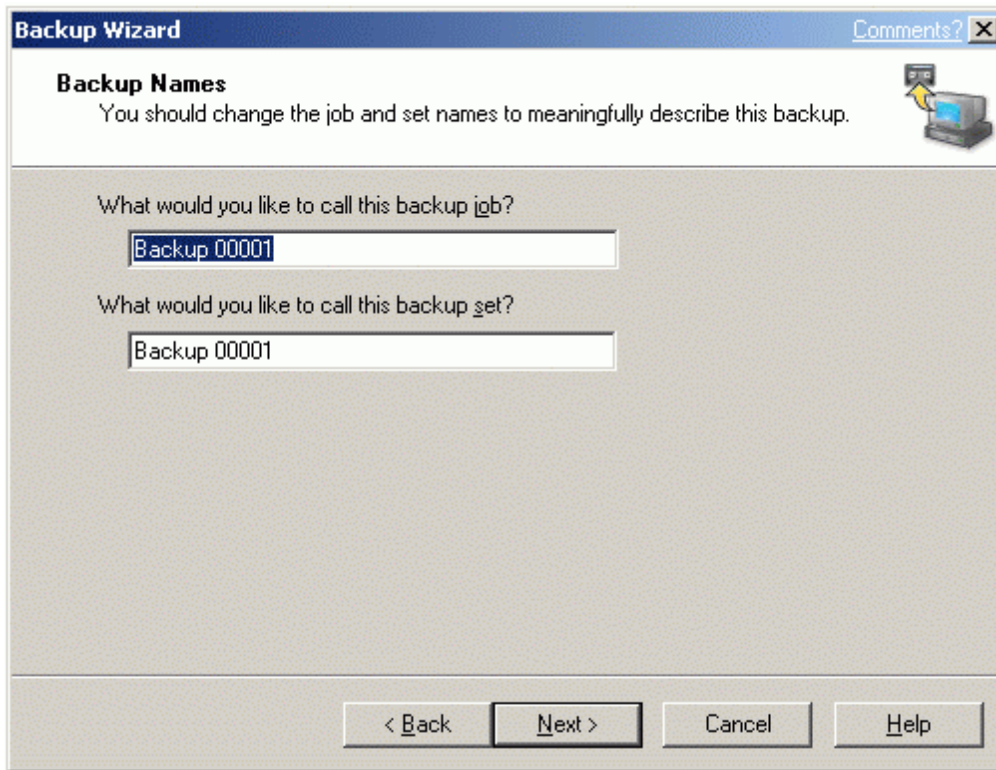
Press the **Next** button to continue.

Specify the logon account for the resource if needed.
Then test all the resources.



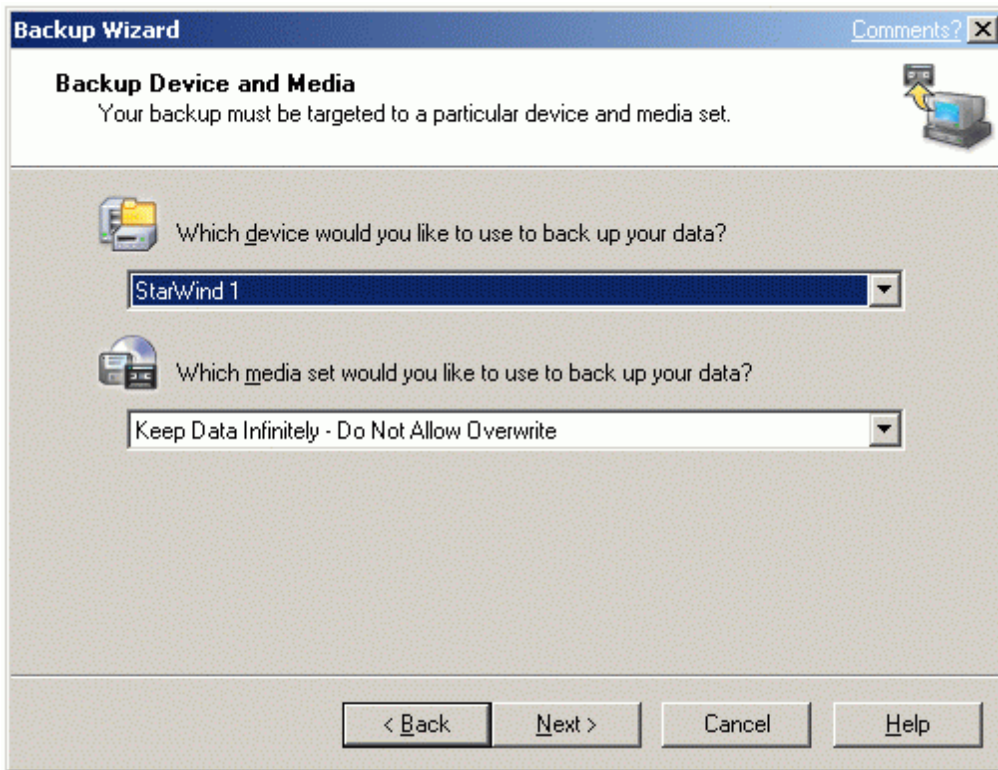
Press the **Next** button to continue.

Specify a meaningful name for your backup job.



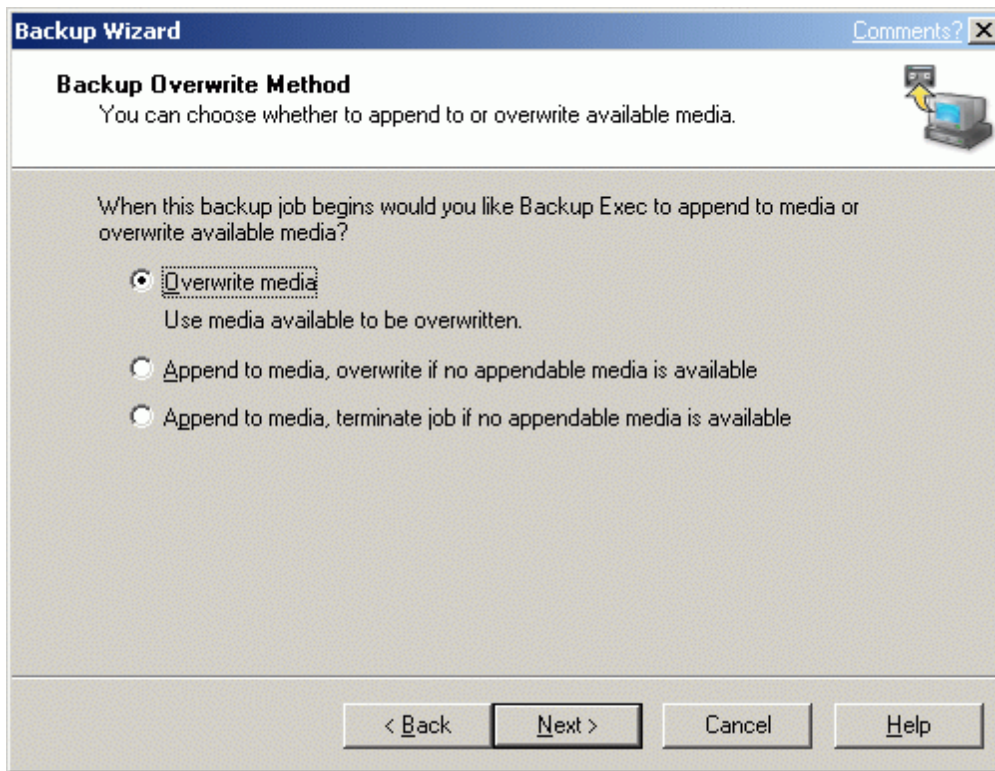
Press the **Next** button to continue.

Select the destination backup device.



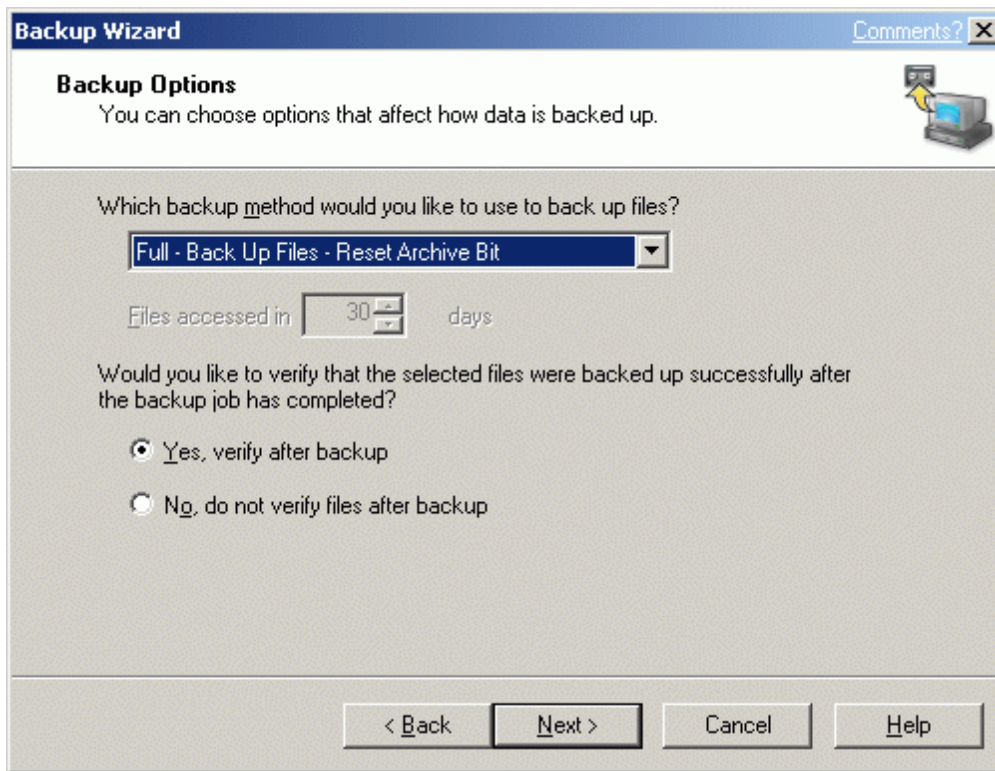
Press the **Next** button to continue.

Specify the overwrite options.



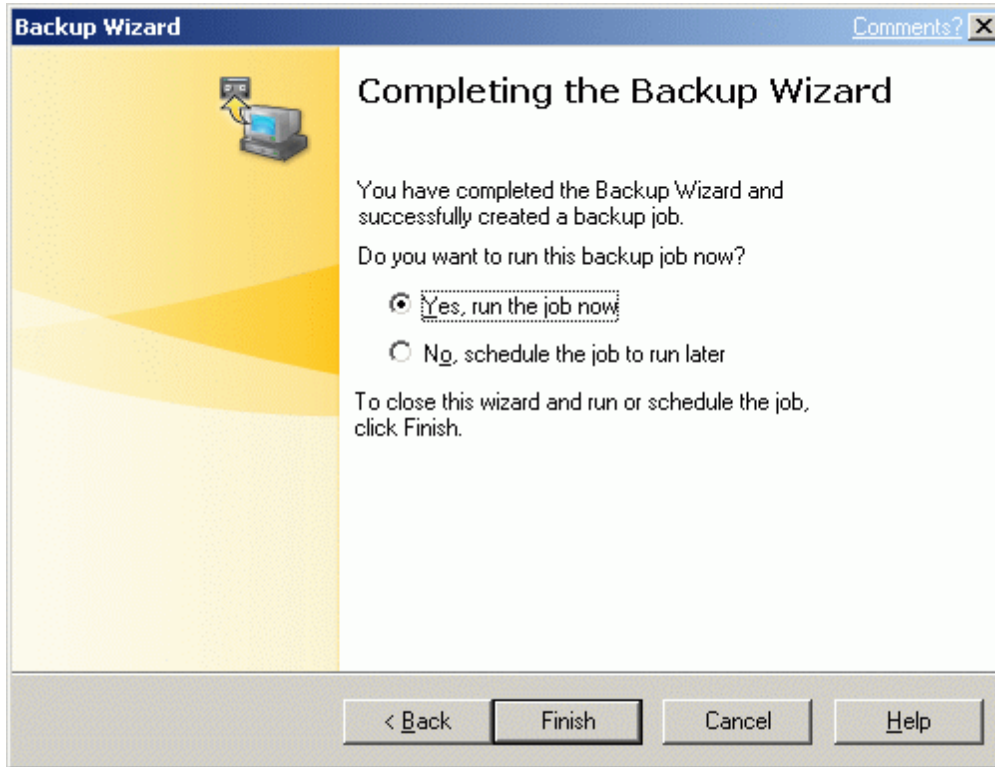
Press the **Next** button to continue.

Select backup options.



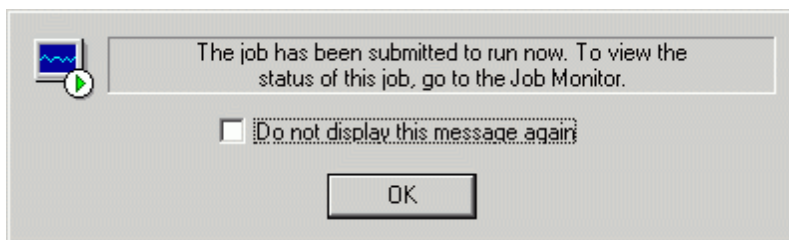
Press the **Next** button to continue.

Complete the backup wizard by selecting whether to run the job now or schedule it for later.



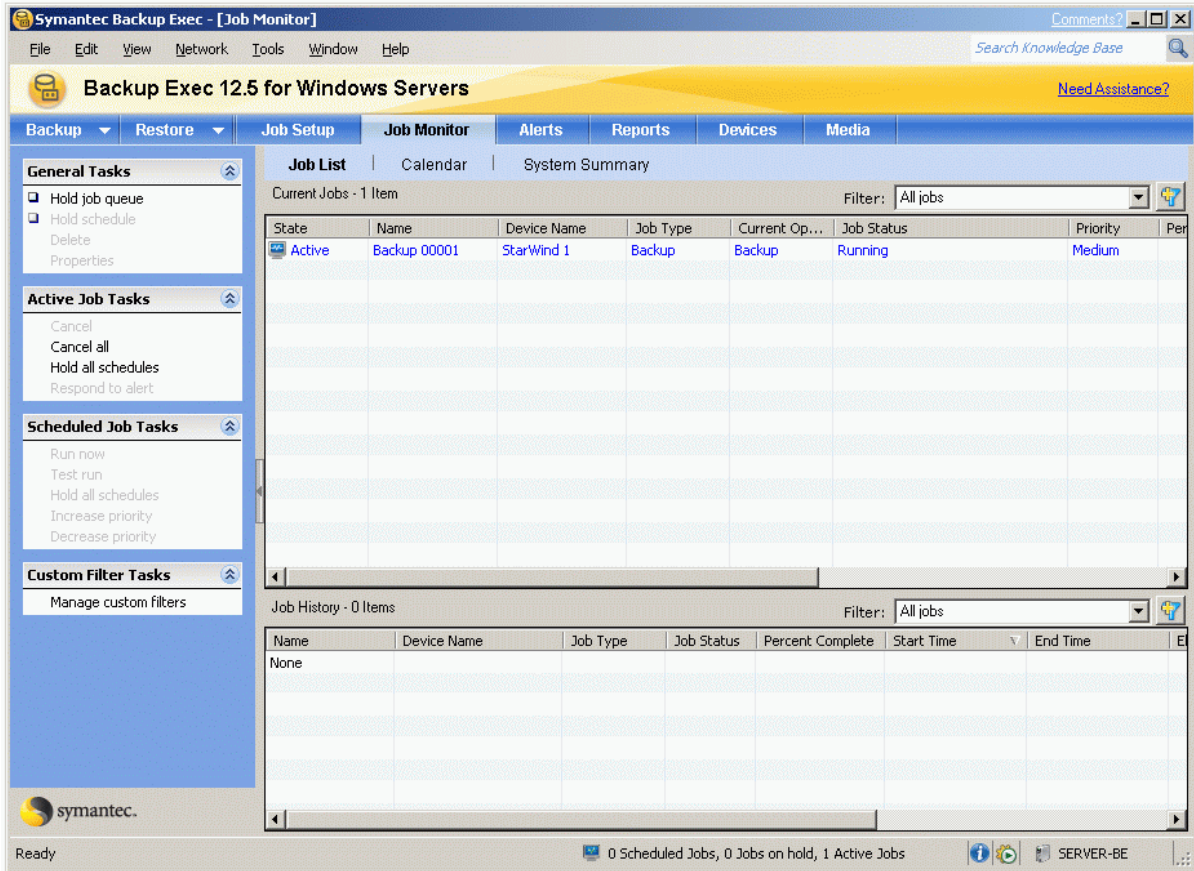
Press the **Finish** button to continue.

The information dialog appears



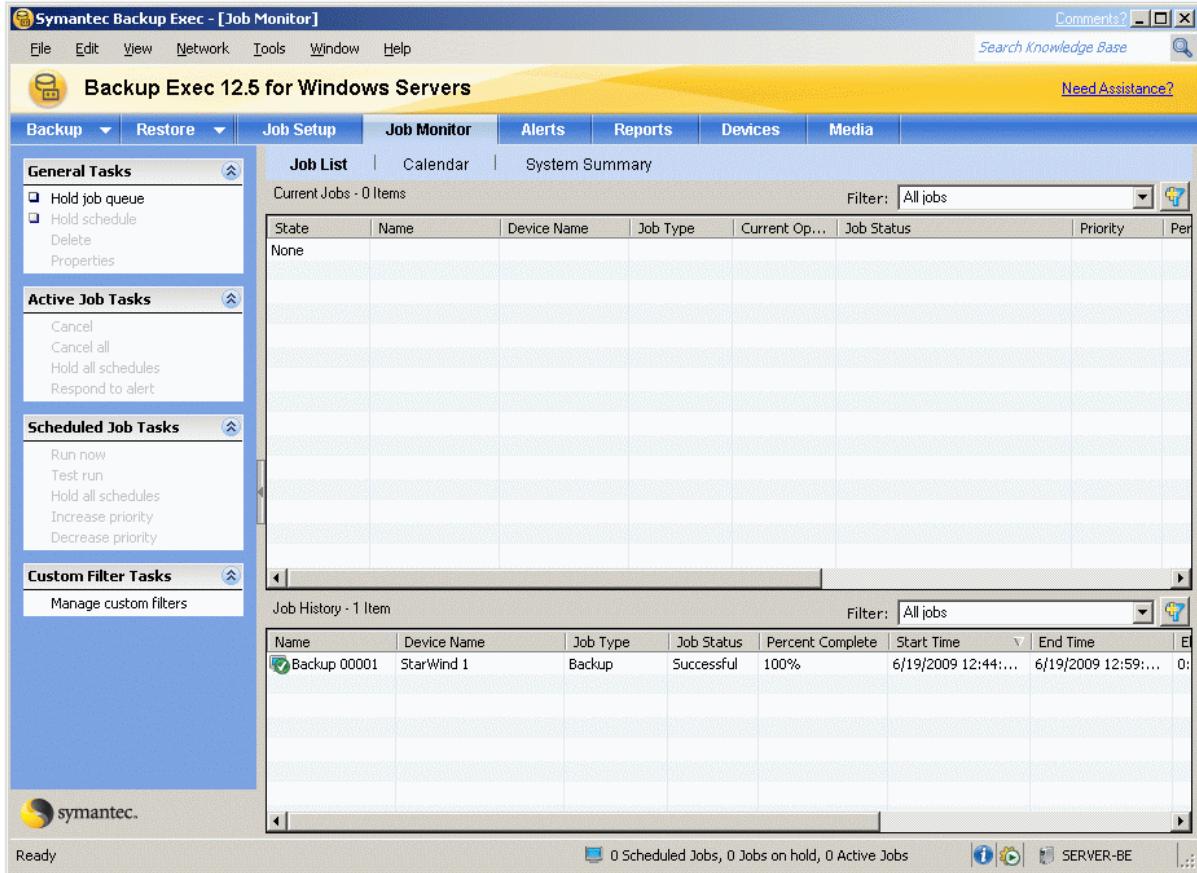
Press the **OK** button.

Switch to Job Monitor. Here you can see all the backup process.



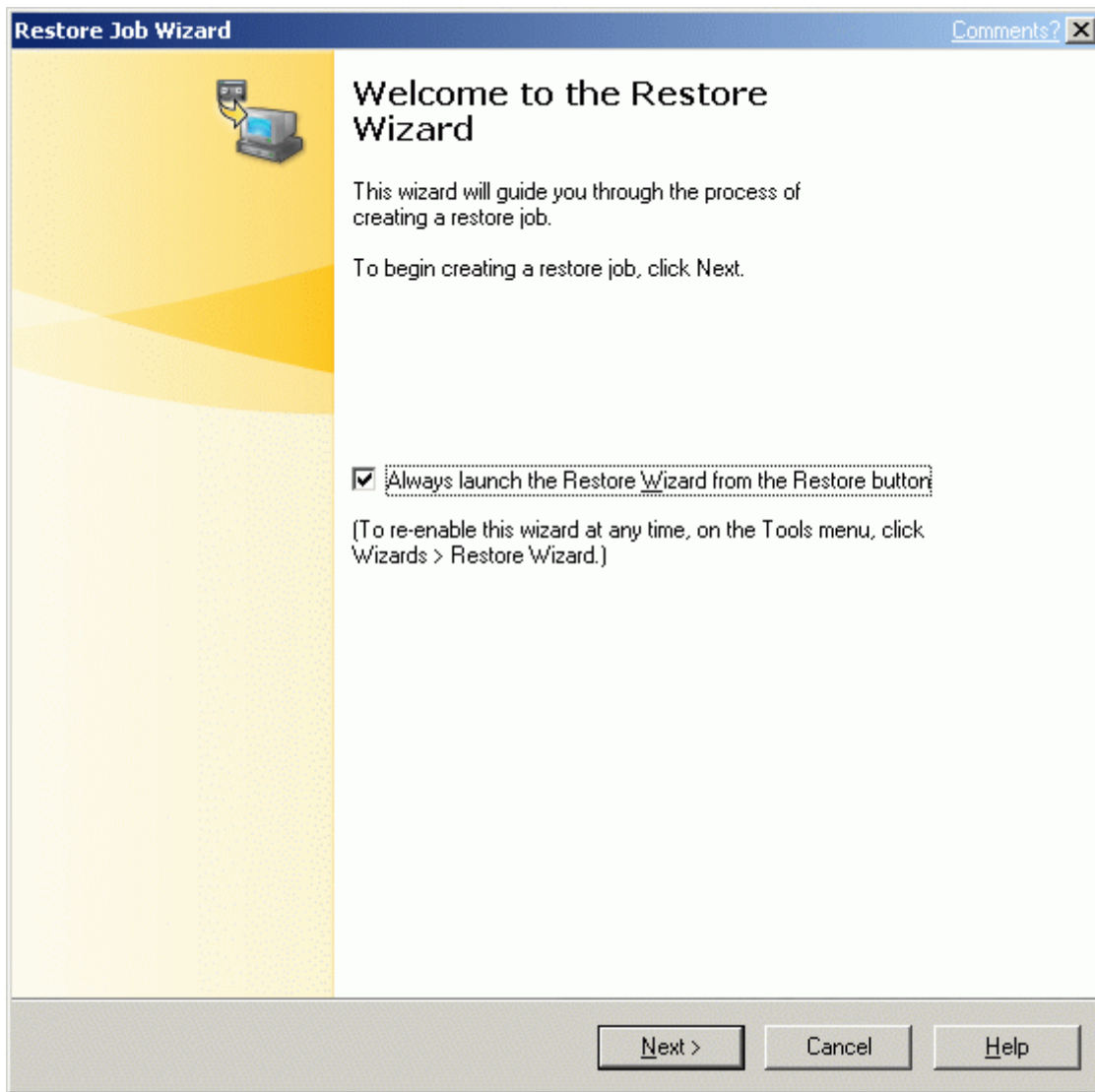
Restoring data

Open Backup Exec application.



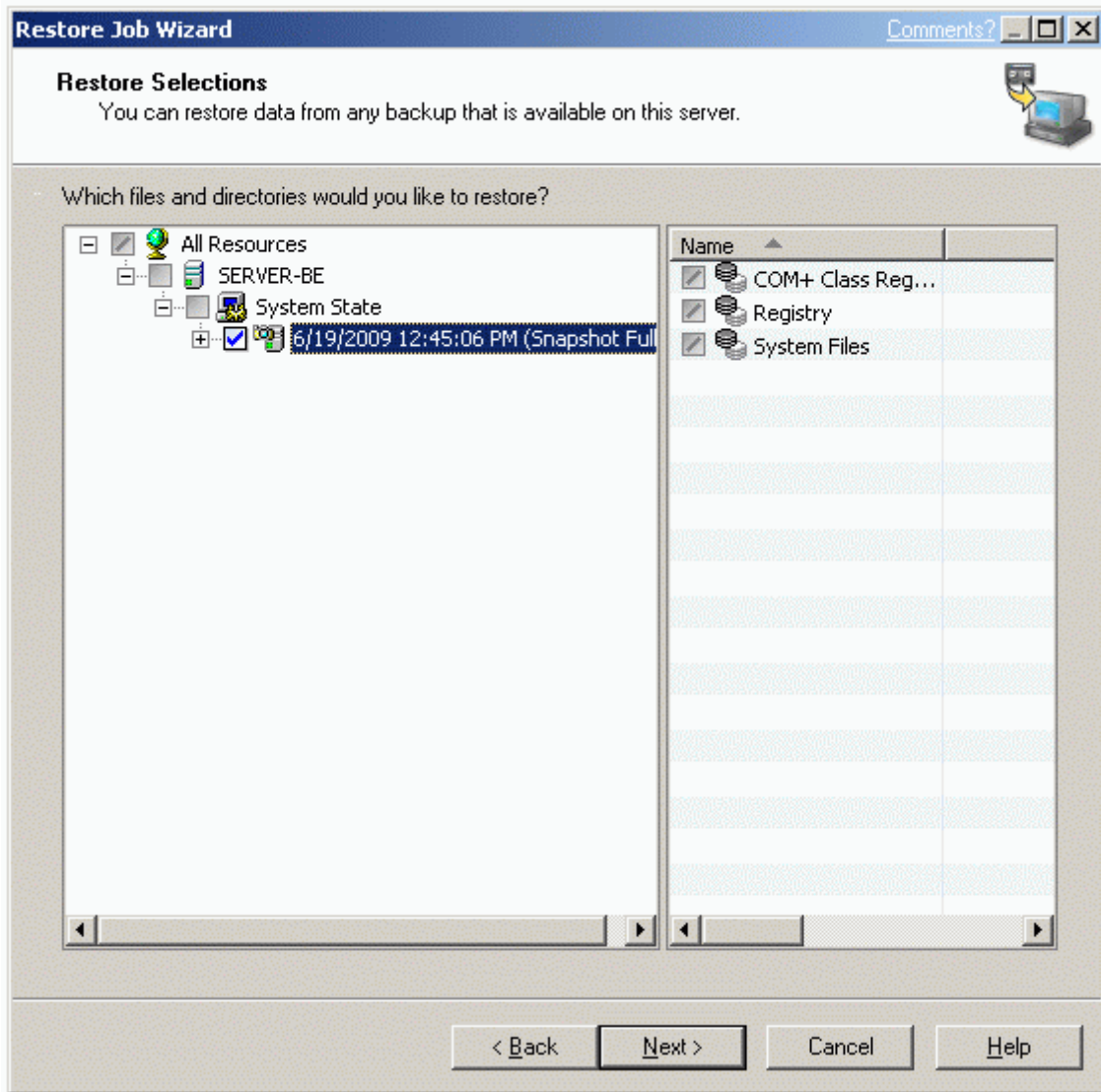
Press the **Restore** button to continue.

Restore wizard window will appear.



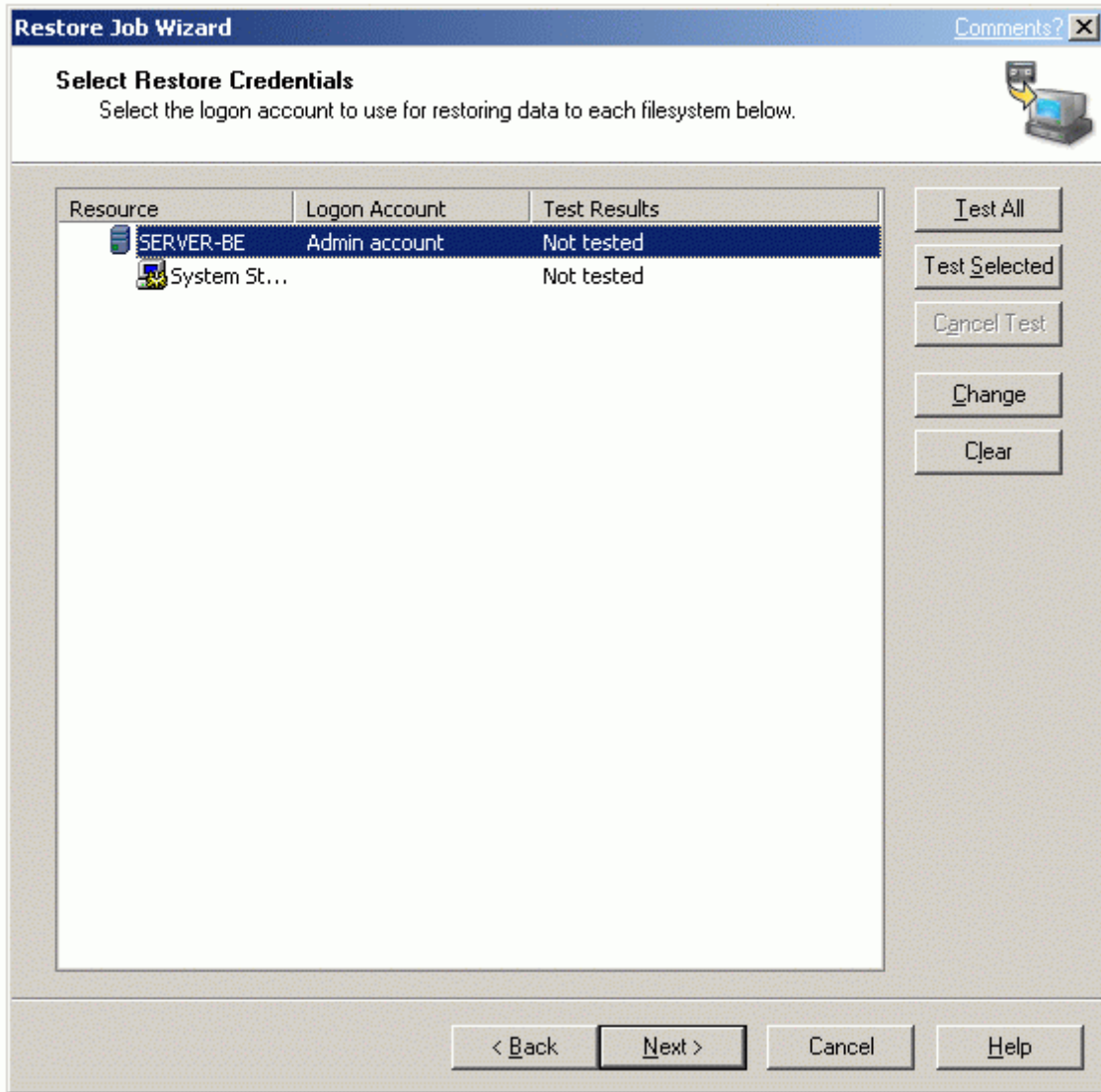
Press the **Next** button to continue.

Select the resources to be restored.



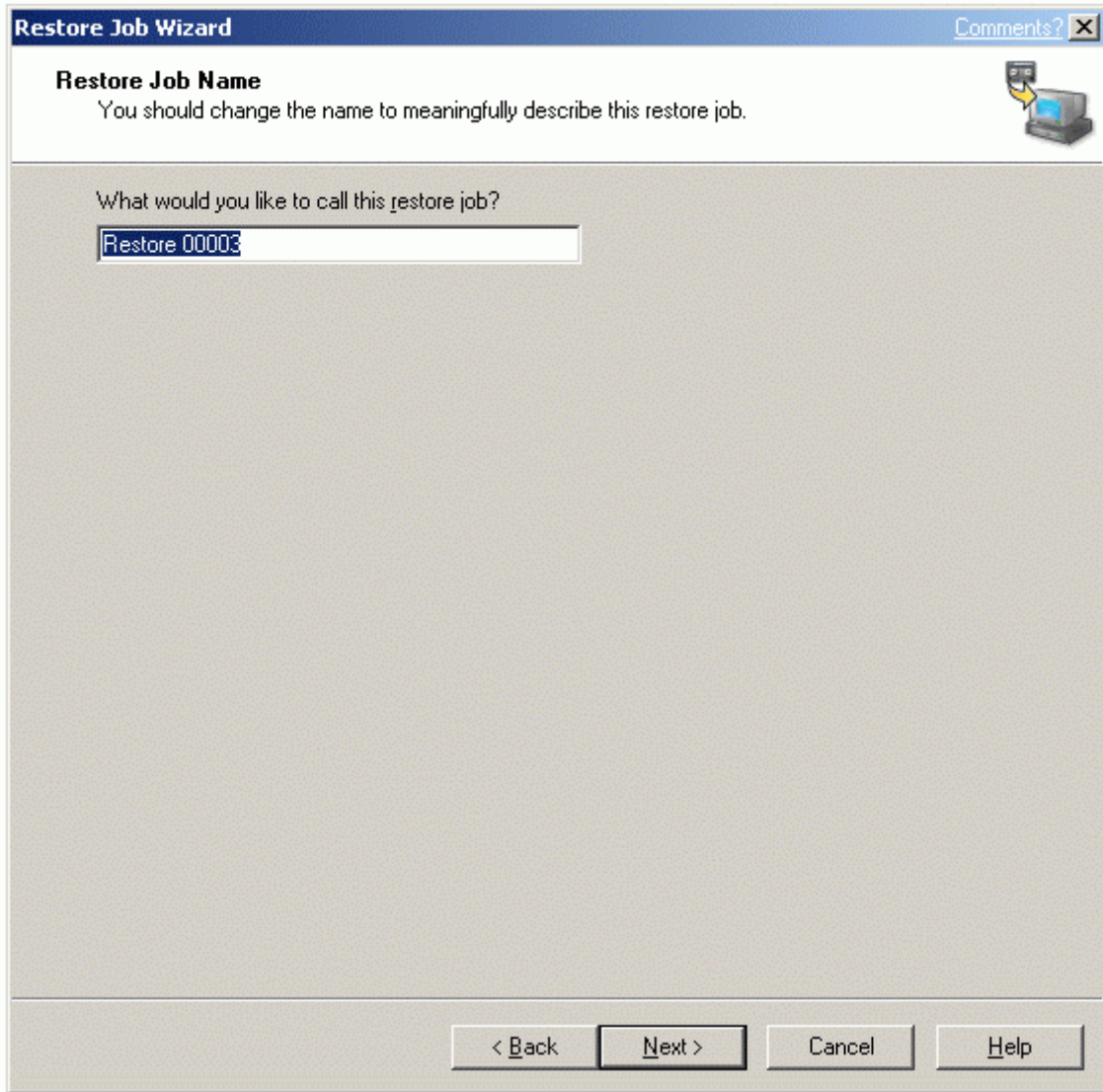
Press the **Next** button to continue.

Specify the logon accounts for the job.



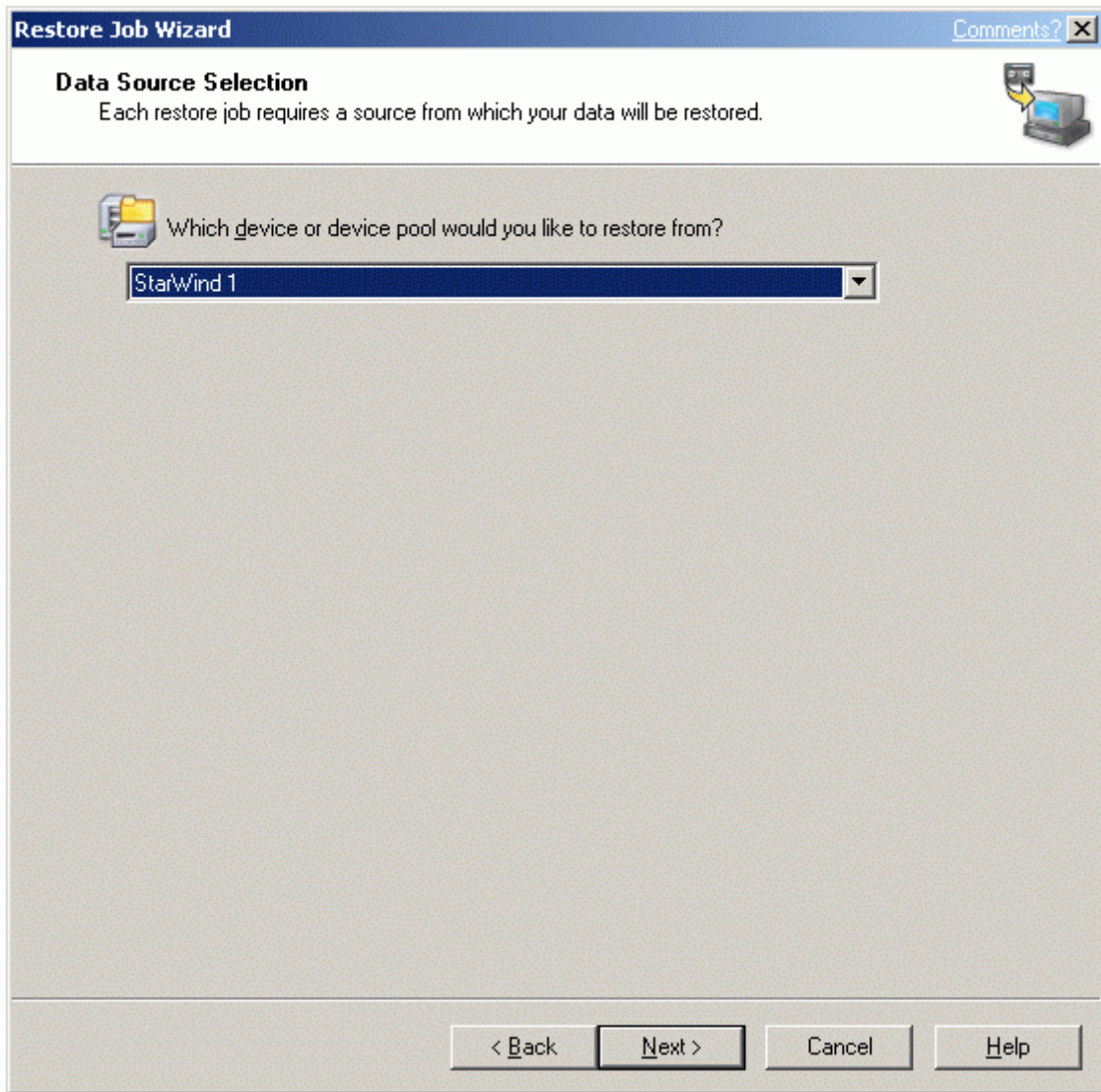
Press the **Next** button to continue.

Specify a meaningful name for the job.



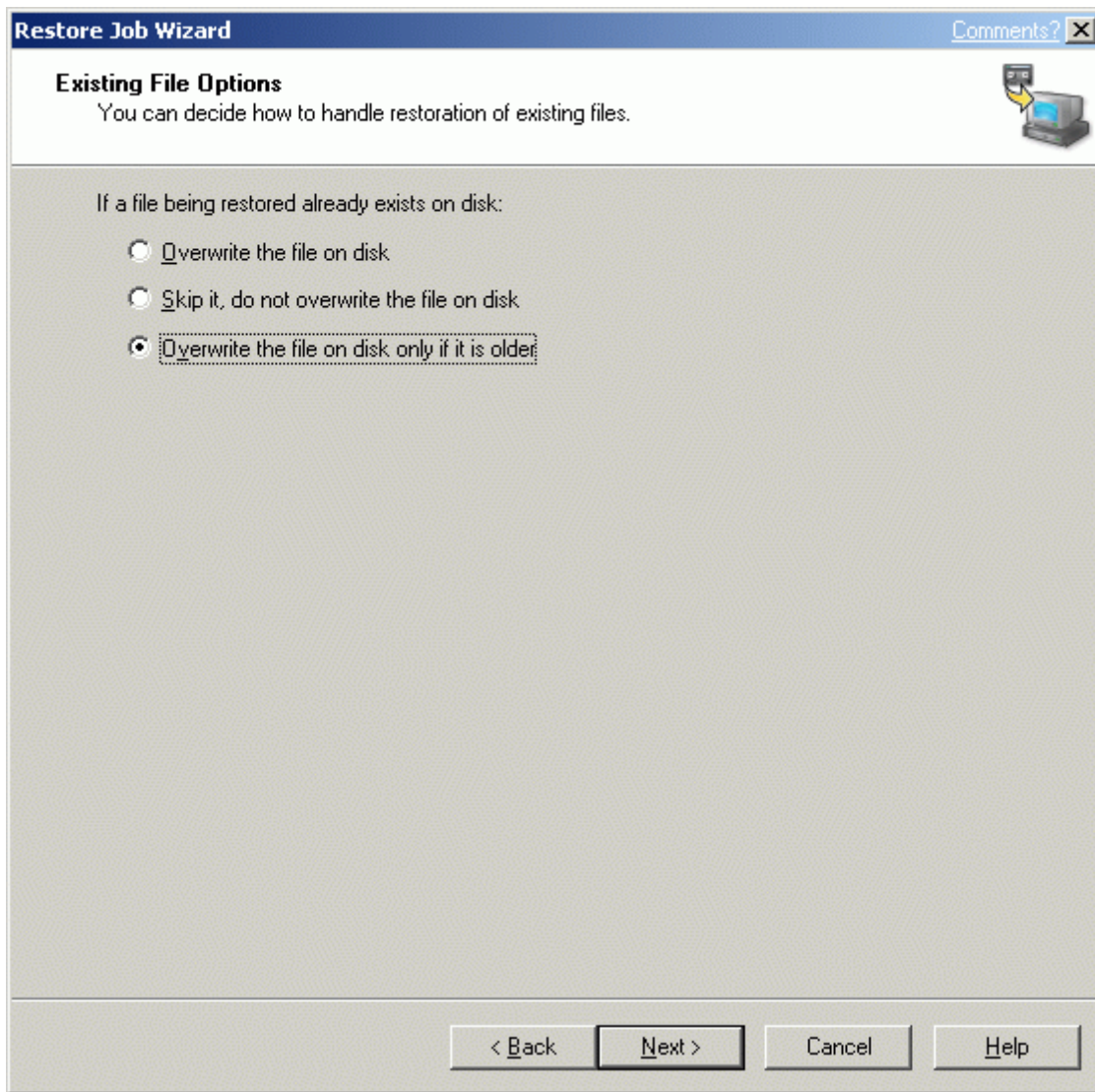
Press the **Next** button to continue.

Select the source device to restore from.



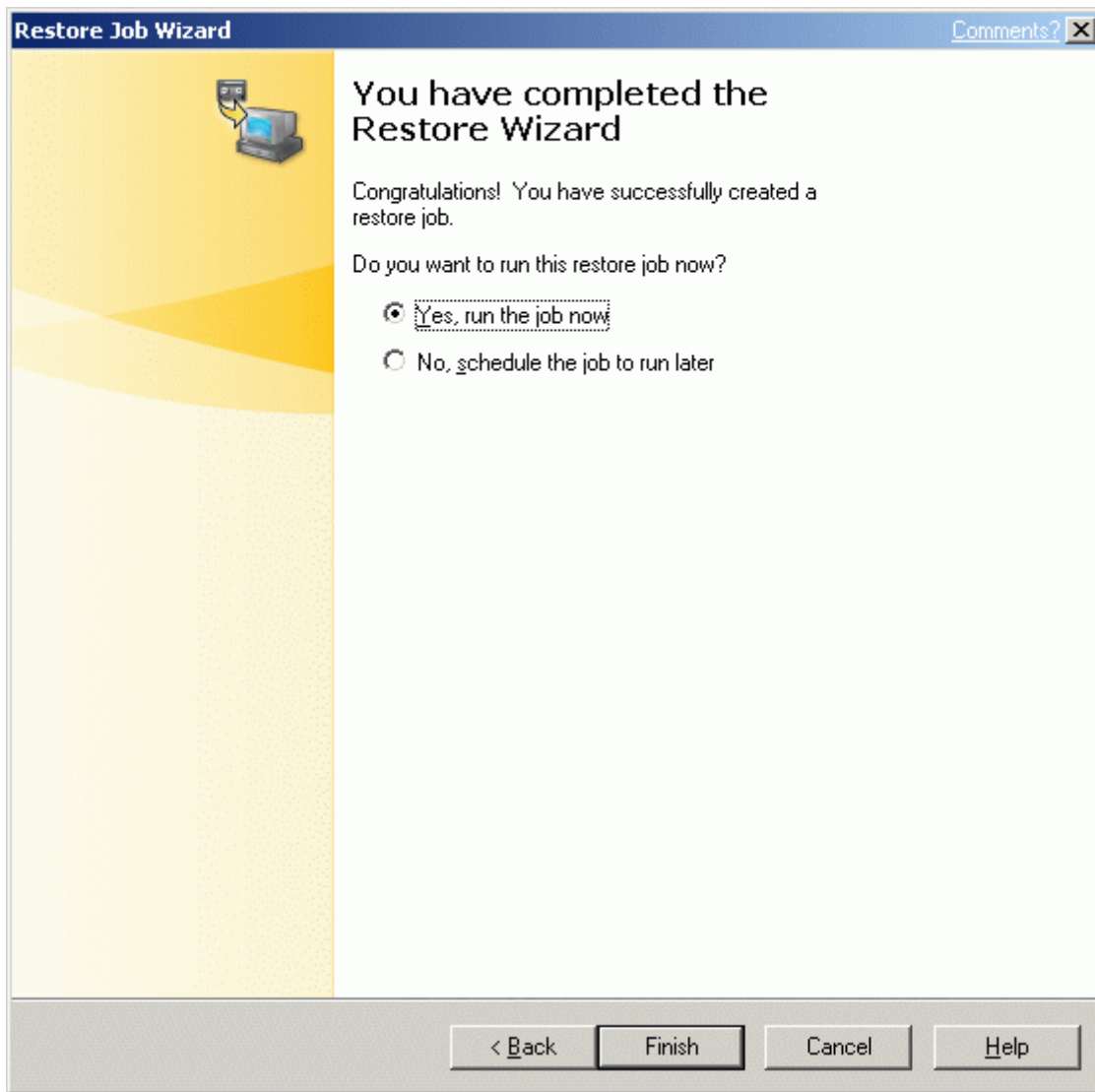
Press the **Next** button to continue.

Select overwrite options.



Press the **Next** button to continue.

Complete the restore job wizard.



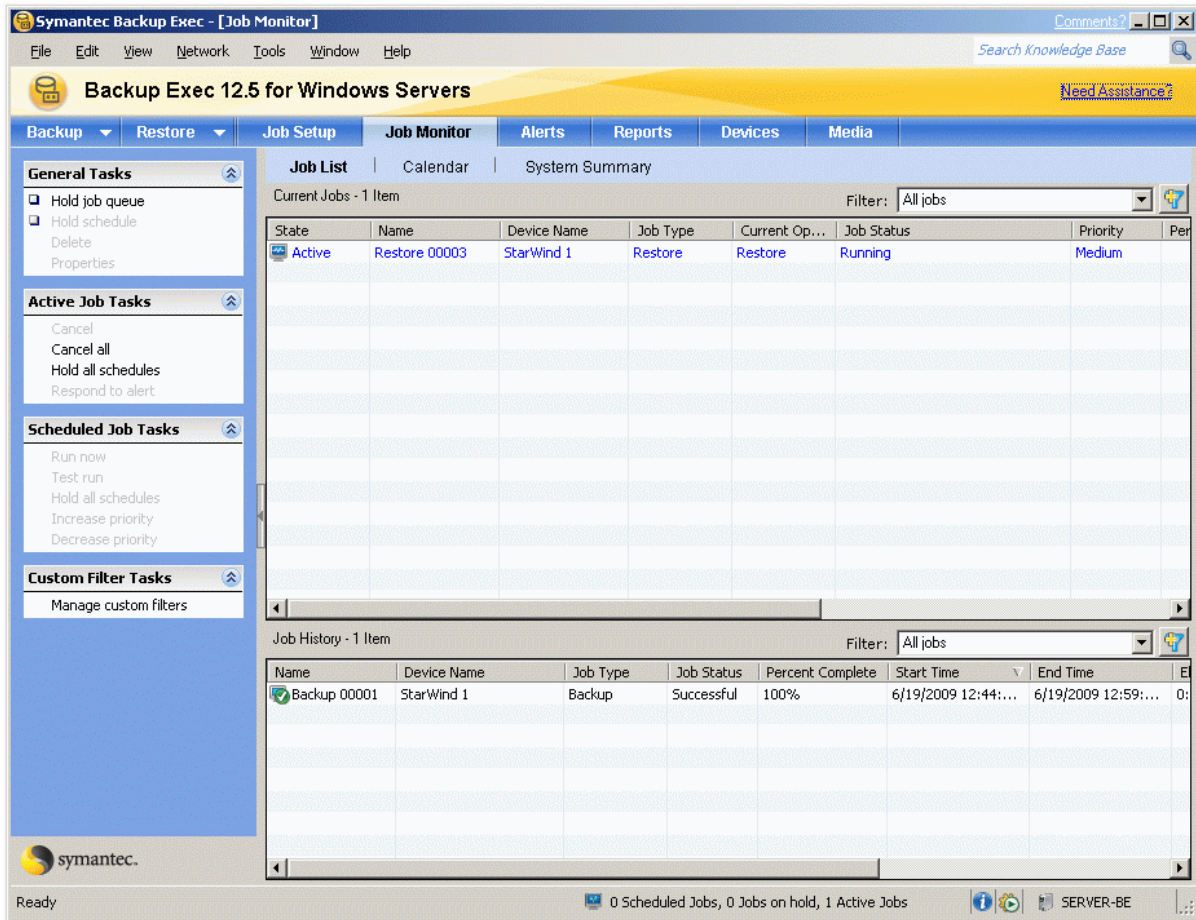
Press the **Finish** button.

A dialog window will appear.



Press the **OK** button.

Switch to the Job Monitor screen to view the restoring process.



Conclusion

Contacts

Support: www.starwindsoftware.com/support

Support Forum: www.starwindsoftware.com/forums

Sales E-mail: sales@starwindsoftware.com

US Headquarters

Direct phone number: 1-617-449-7717

Fax: 1-617-507-5845

EMEA, APAC

Direct phone numbers: +44-0-2071936727

+44-0-2071936350

Voice Mail: 1-866-790-2646

StarWind Software Inc.

40 Mall Rd., Burlington

MA 01803, USA

www.starwindsoftware.com