

StarWind iSCSI SAN Software: Tape Drives Using StarWind and Symantec Backup Exec

www.starwindsoftware.com

Copyright © StarWind Software 2008-2011. All rights reserved.

COPYRIGHT

Copyright © StarWind Software 2008-2011. All rights reserved. No part of this publication may be reproduced, stored in a retrieval system, or transmitted in any form or by any means, electronic, mechanical, photocopying, recording or otherwise, without the prior written consent of StarWind Software.

TRADEMARKS

“StarWind”, “StarWind Software” and the StarWind and the StarWind Software logos are trademarks of StarWind Software which may be registered in some jurisdictions. All other trademarks are owned by their respective owners.

CHANGES

The material in this document is for information only and is subject to change without notice. While reasonable efforts have been made in the preparation of this document to assure its accuracy, StarWind Software assumes no liability resulting from errors or omissions in this document, or from the use of the information contained herein. StarWind Software reserves the right to make changes in the product design without reservation and without notification to its users.

TECHNICAL SUPPORT AND SERVICES

If you have questions about installing or using this software, check this and other documents first - you will find answers to most of your questions here or there. If you need further assistance, please contact us.

Table of Contents

Introduction.....	4
Provisioning the Tape Device.....	5
Connecting to a Remote Device using iSCSI Initiator.....	11
Symantec Backup Exec	18
Configuring Symantec Backup Exec	18
Performing backup	38
Restoring data	50

Guide

Introduction

StarWind enables tape drives to be exported over a standard IP network. This allows you to use a centralized tape drive that can be accessed by any client machine as though it had a locally attached tape drive.

This document provides basic step-by-step instructions for configuring StarWind to use Symantec Backup Exec with a exported tape drive. For information about Symantec Backup Exec such as system requirements, compatibility, release notes, technical support, etc., please visit <http://www.symantec.com>.

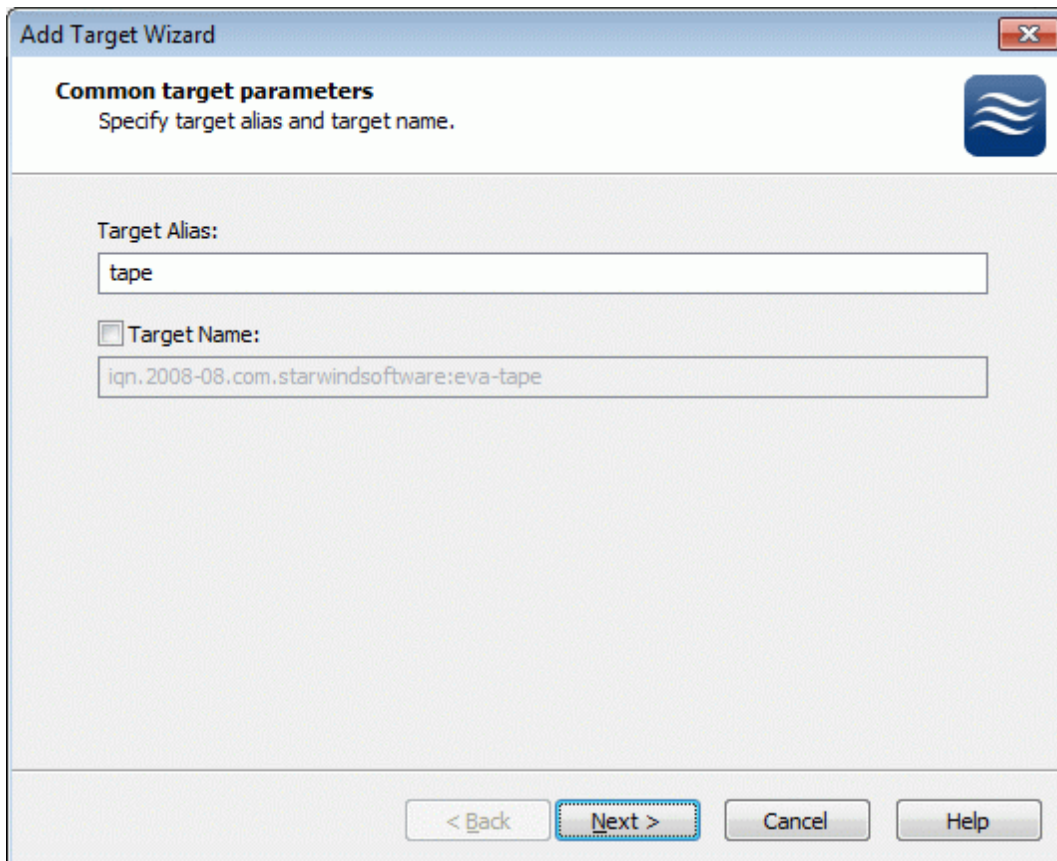
Provisioning the Tape Device

Launch the **StarWind** console selecting **Start -> All Programs -> StarWind Software -> StarWind -> StarWind**. After the console is launched its icon appears in the system tray. Double click the icon with the left mouse button or single click it with the right and select **Start Management** pup-up menu item.

From the **StarWind Servers** tree please select the server you want to connect to. Press the right mouse button over the desired host and select the **Connect** popup menu item. You will be prompted to enter the login and password. Default ones are: root, starwind. You can always change them later.

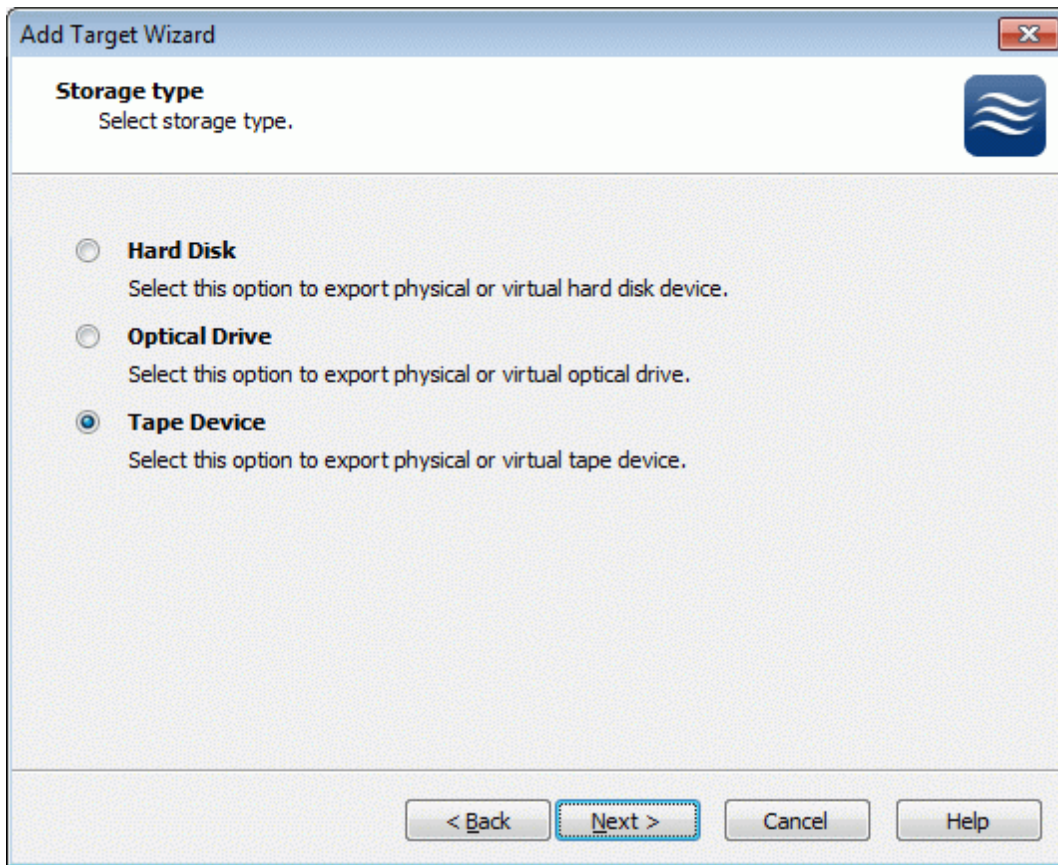
Press **Add Target** button to continue.

In the Wizard that appears, specify a target name. The name must be a unique name by which the device will be declared to the iSCSI initiators connecting to StarWind over an IP network.



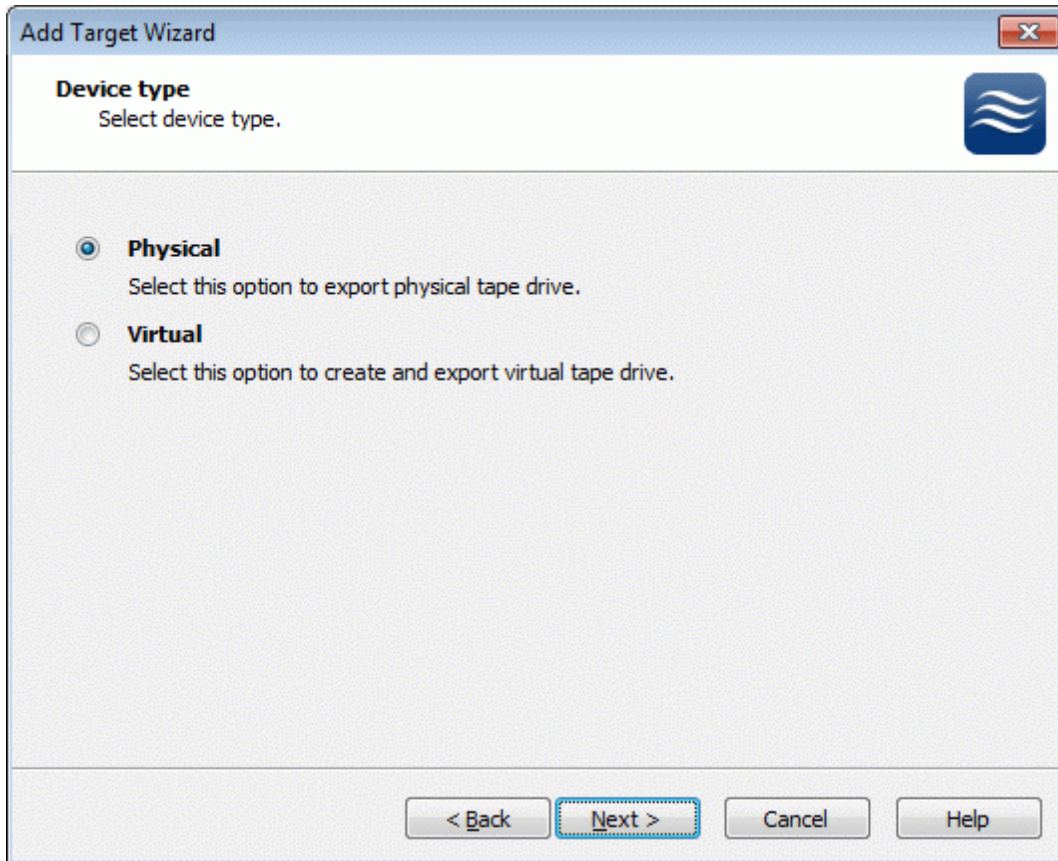
Press the **Next** button to continue.

Select **Tape device**.



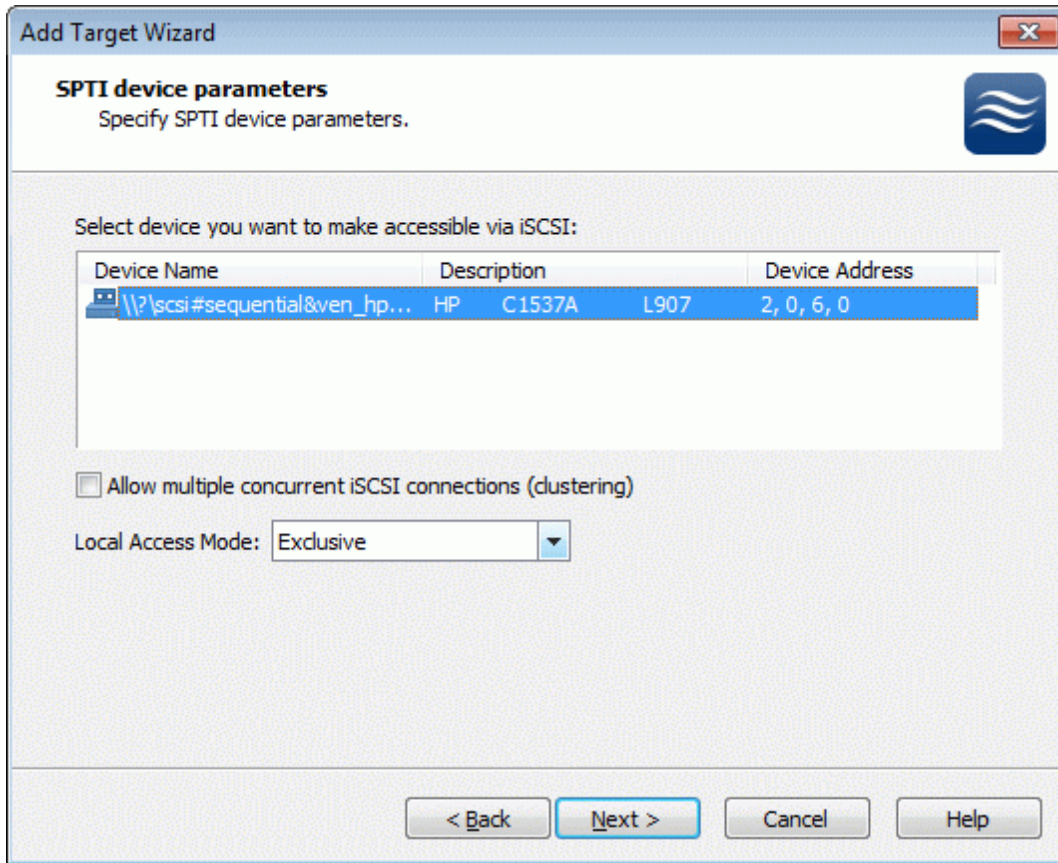
Press the **Next** button to continue.

Select **Create new virtual disk** to create a new hard disk image or **Mount existing virtual disk** to mount an existing image that you've prepared before.



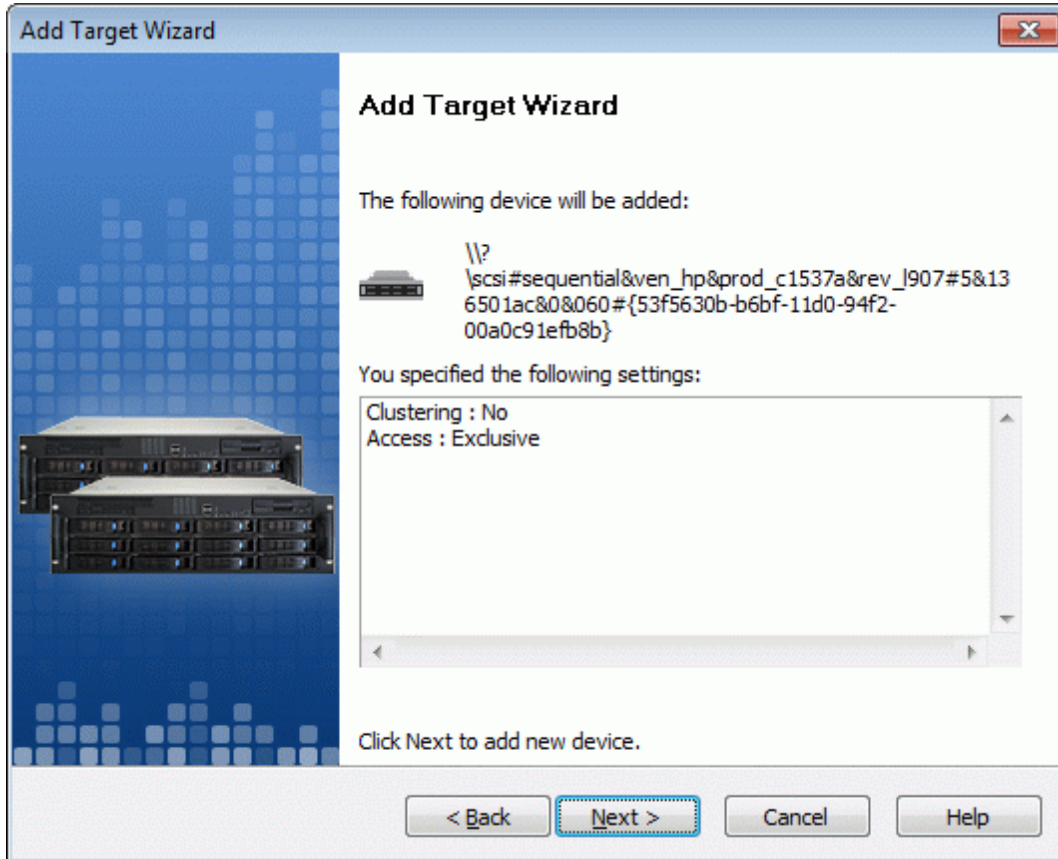
Press the **Next** button to continue.

If you have decided to create a new virtual disk, specify the location and the name of the virtual disk you want to be created. The virtual disk size is specified in megabytes. Refer to the online help for details regarding additional parameters (**Fill with zeroes**, **Compressed** and **Encrypted**).



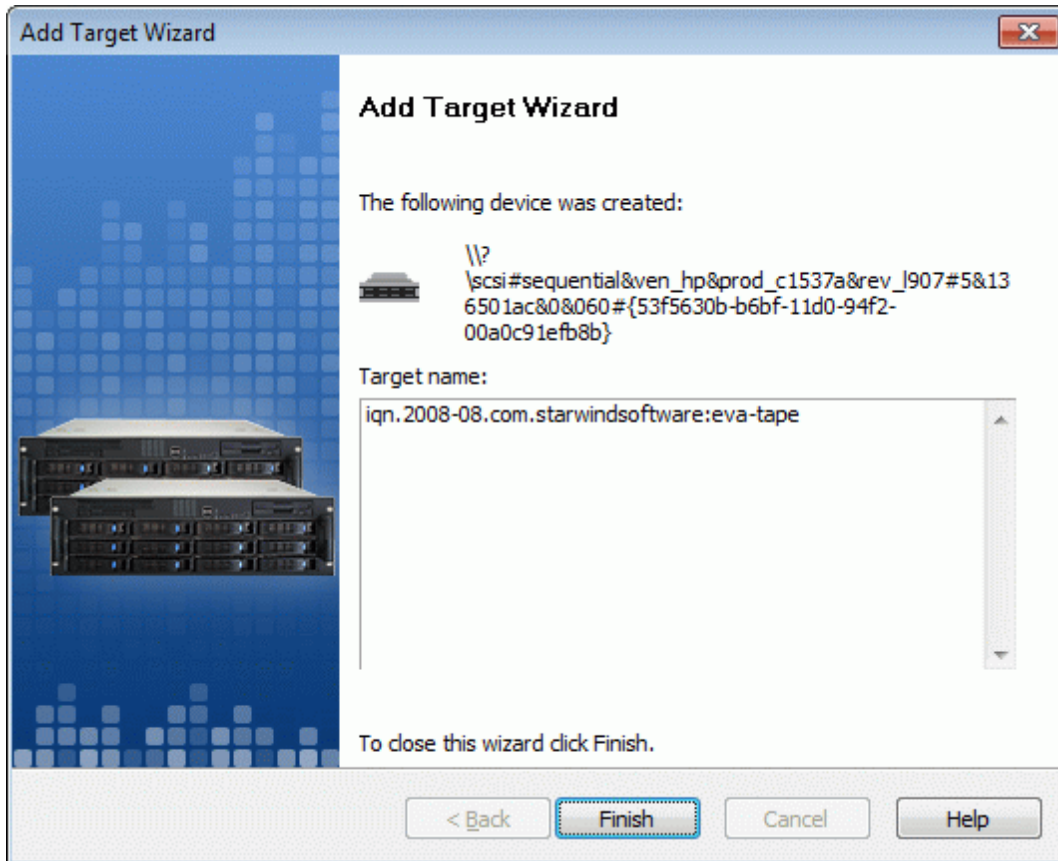
Press the **Next** button to continue.

Check the device parameters are correct. Press the **Back** button should any changes be required.



Press the **Next** button to continue.

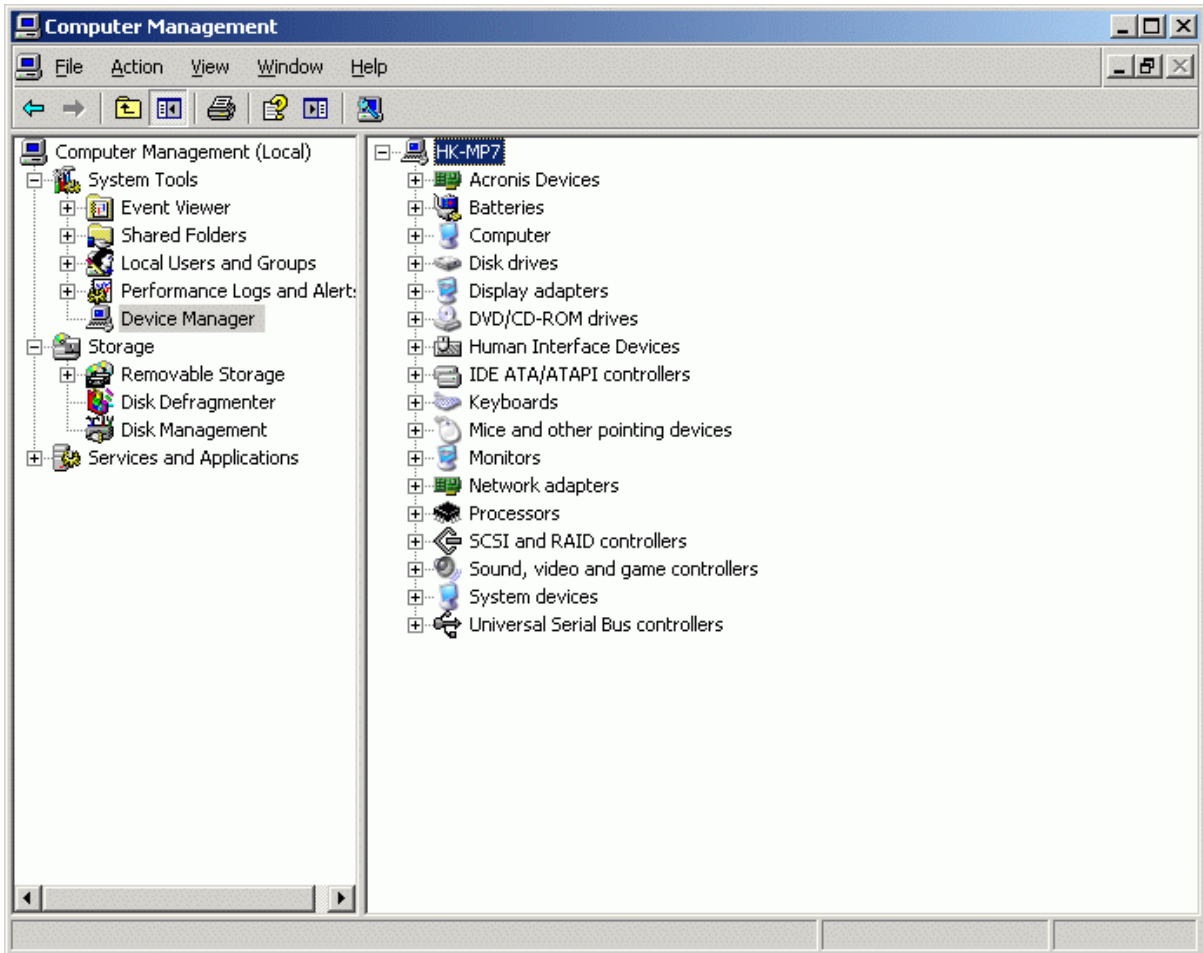
A summary of the created device is displayed on the last wizard page (see image below).



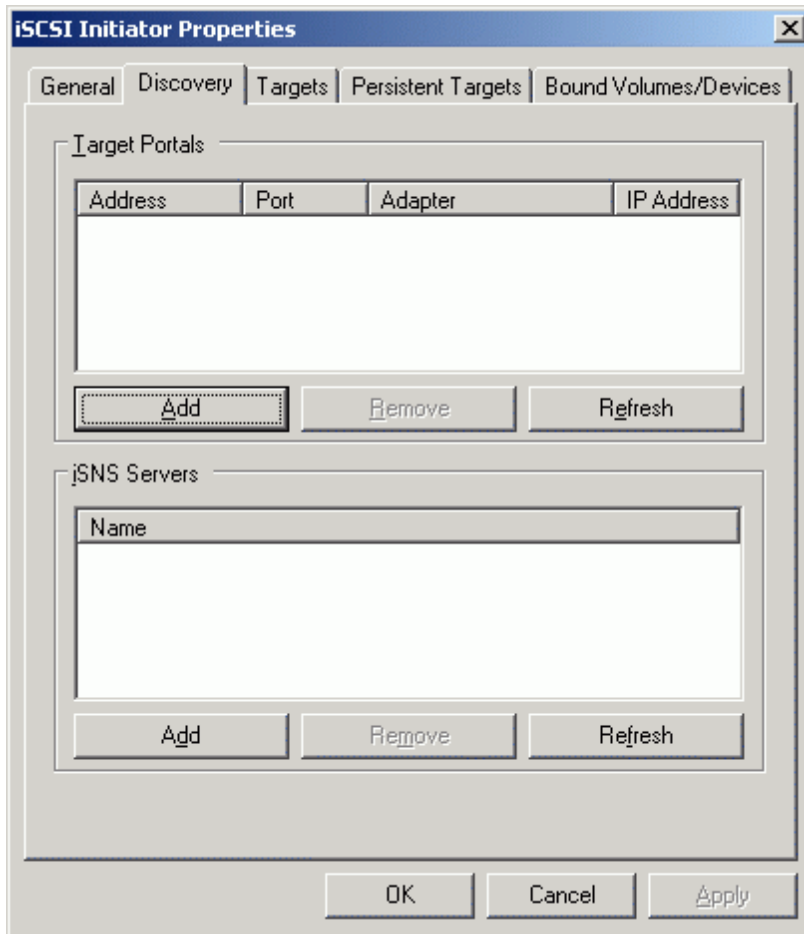
Press the **Finish** button to close the wizard.

Connecting to a Remote Device using iSCSI Initiator

Launch Computer Management console. Note that it currently shows no tape devices connected.

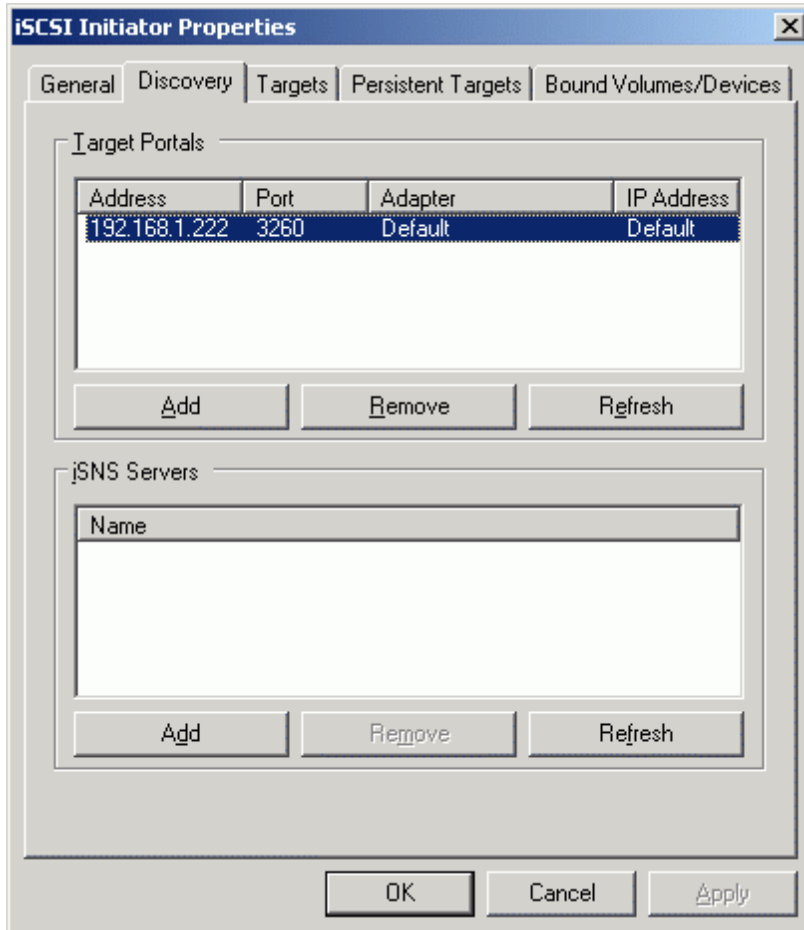


Launch the Microsoft iSCSI Software Initiator application
Start->All Programs->Microsoft iSCSI Initiator-> Microsoft iSCSI Initiator.
Switch to the Discovery tab.



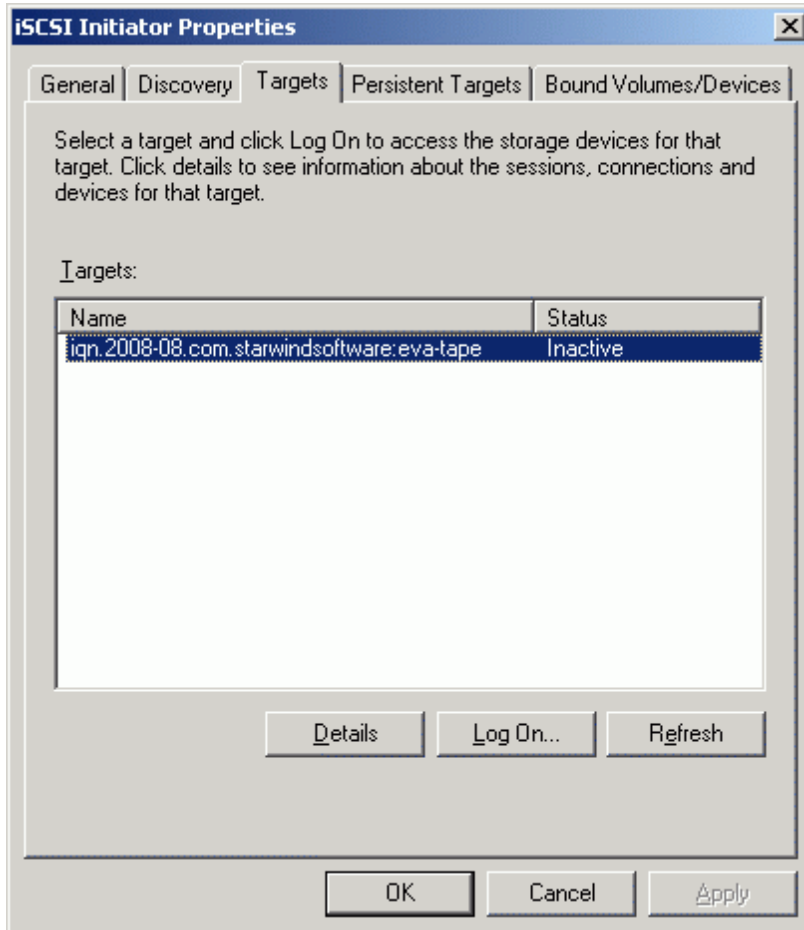
In the Target Portals group press the **Add** button.

In the 'Add Target Portal' dialog, type in the IP address of the StarWind server and port number assigned to StarWind (default : 3260).



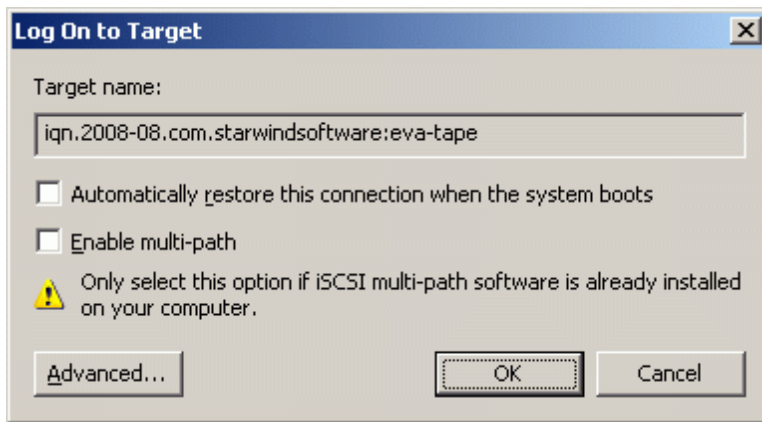
Press the **OK** button.

Switch to the Targets tab. Select the target name from the list (if no targets are listed, press the Refresh button).



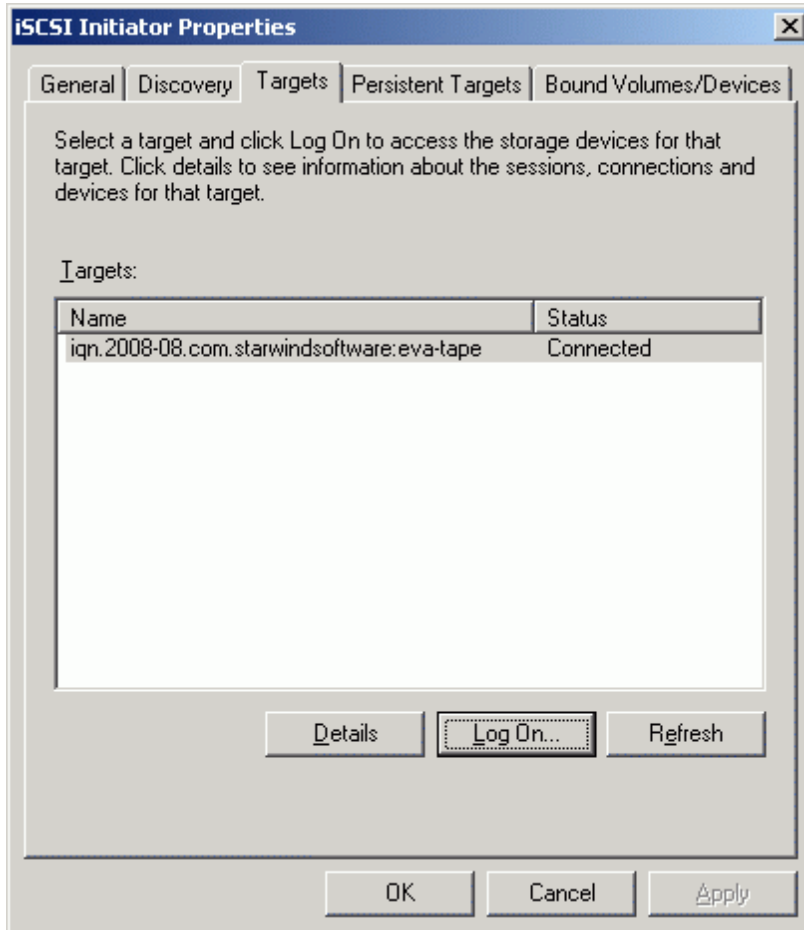
Press the Log **On...** button.

The Log On to Target dialog window appears

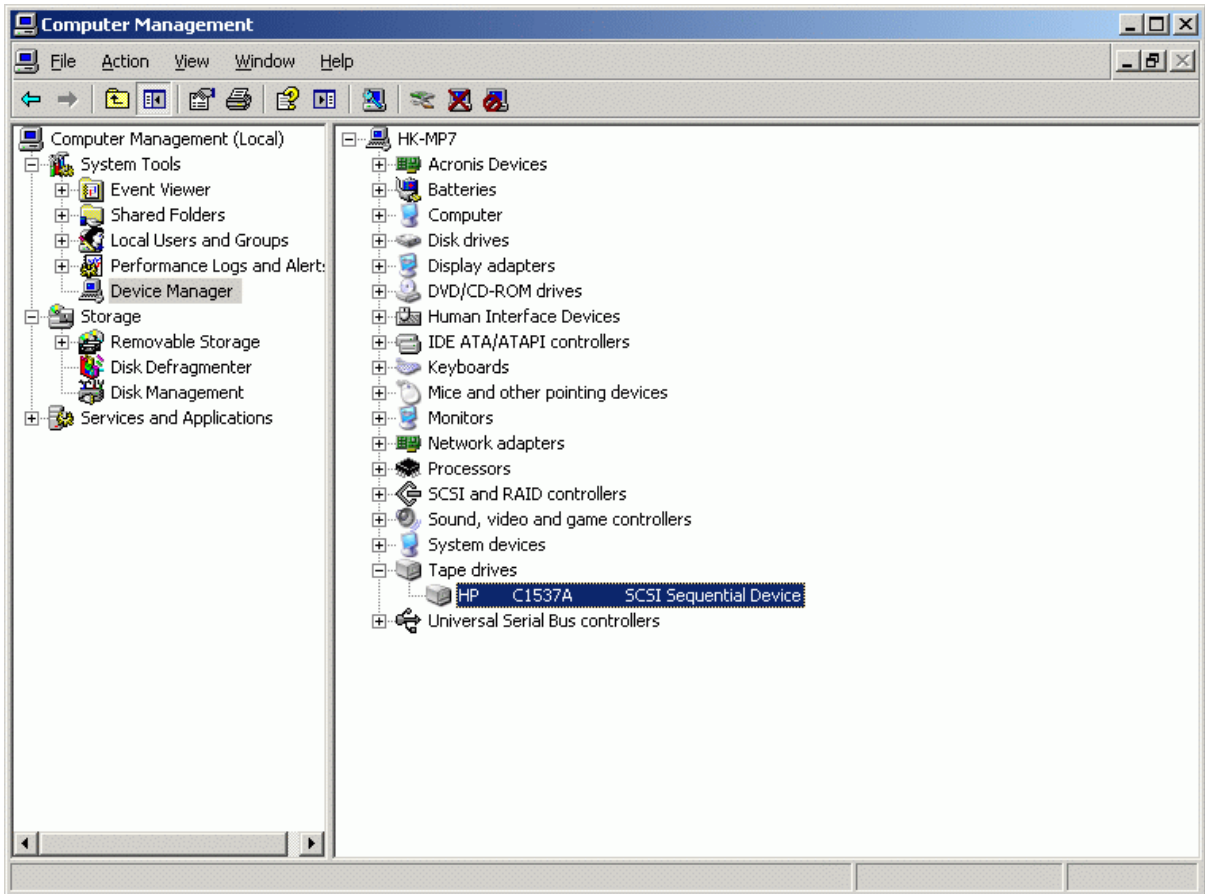


Press the **OK** button.

If the logon is successful, the iSCSI device will show as 'Connected'. It may take a few seconds for the device to appear in Windows.



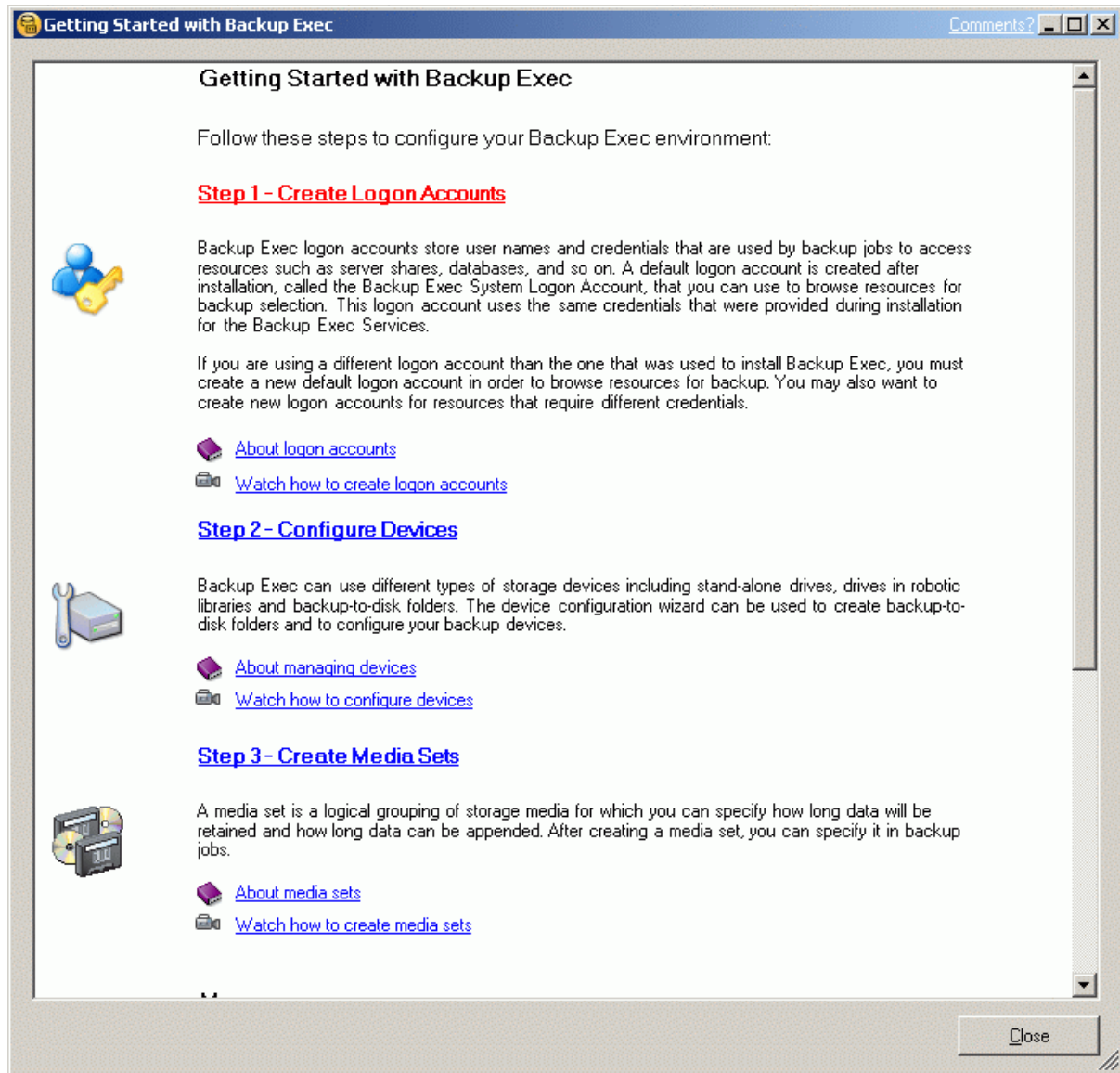
After these steps the tape device will appear as a local device.



Symantec Backup Exec

Configuring Symantec Backup Exec

The Getting Started Wizard appears when Symantec Backup Exec has not previously been started.



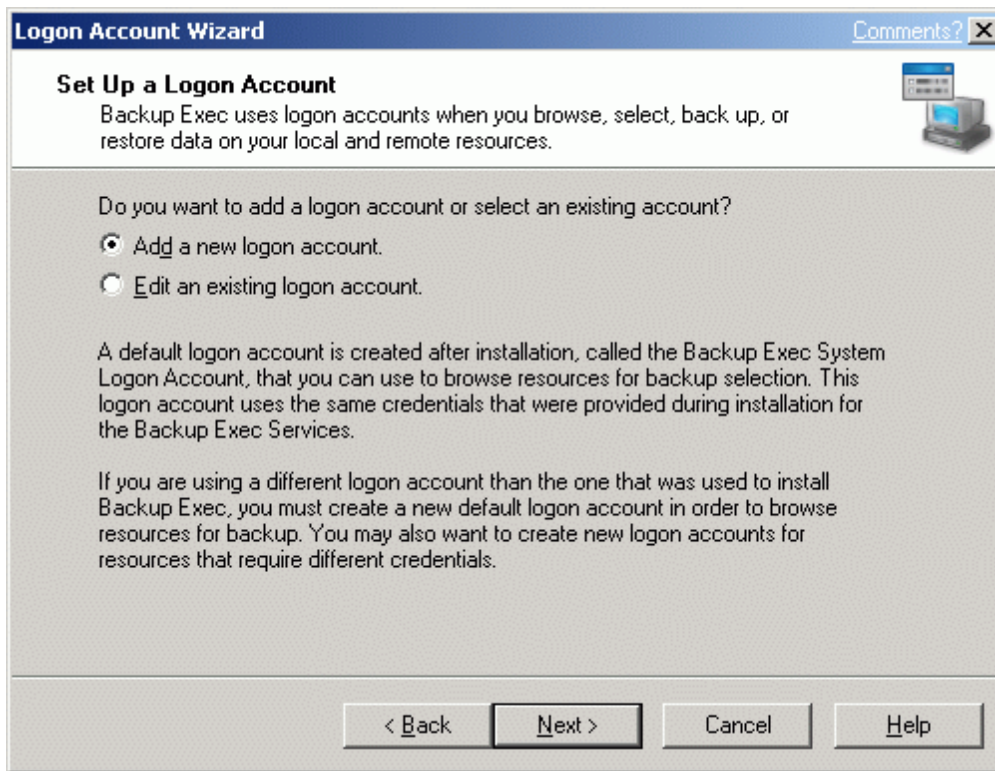
Click on the "Step 1 - Create Logon Accounts"

A Logon Account Wizard window will appear.



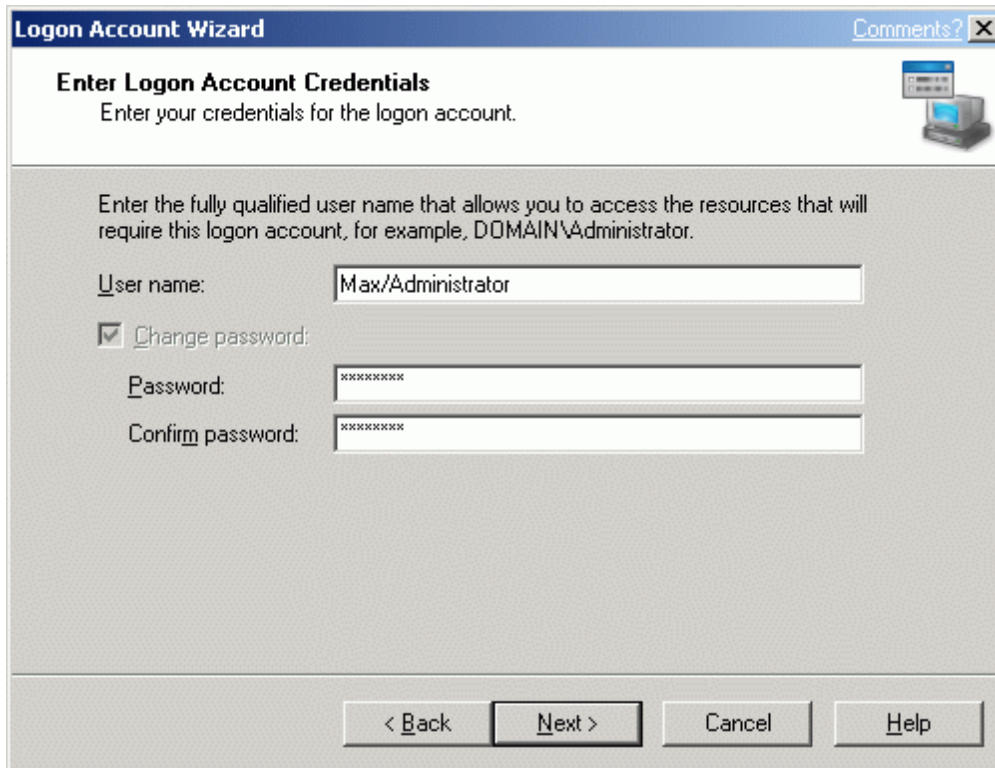
Press the **Next** button to continue.

Select the "Add a new logon account" option.



Press the **Next** button to continue.

Enter the credentials for the user.



Logon Account Wizard Comments? X

Enter Logon Account Credentials
Enter your credentials for the logon account.

Enter the fully qualified user name that allows you to access the resources that will require this logon account, for example, DOMAIN\Administrator.

User name: Max/Administrator

Change password:

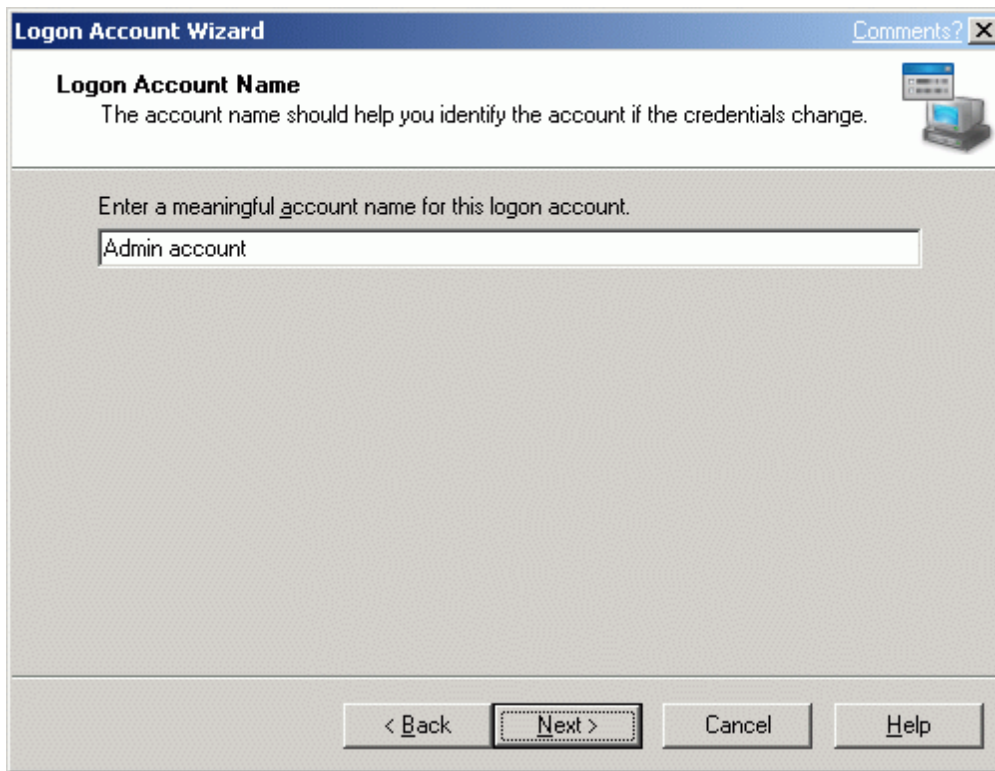
Password: *****

Confirm password: *****

< Back Next > Cancel Help

Press the **Next** button to continue.

Type a meaningful account name for this logon account.



Logon Account Wizard Comments? X

Logon Account Name
The account name should help you identify the account if the credentials change.

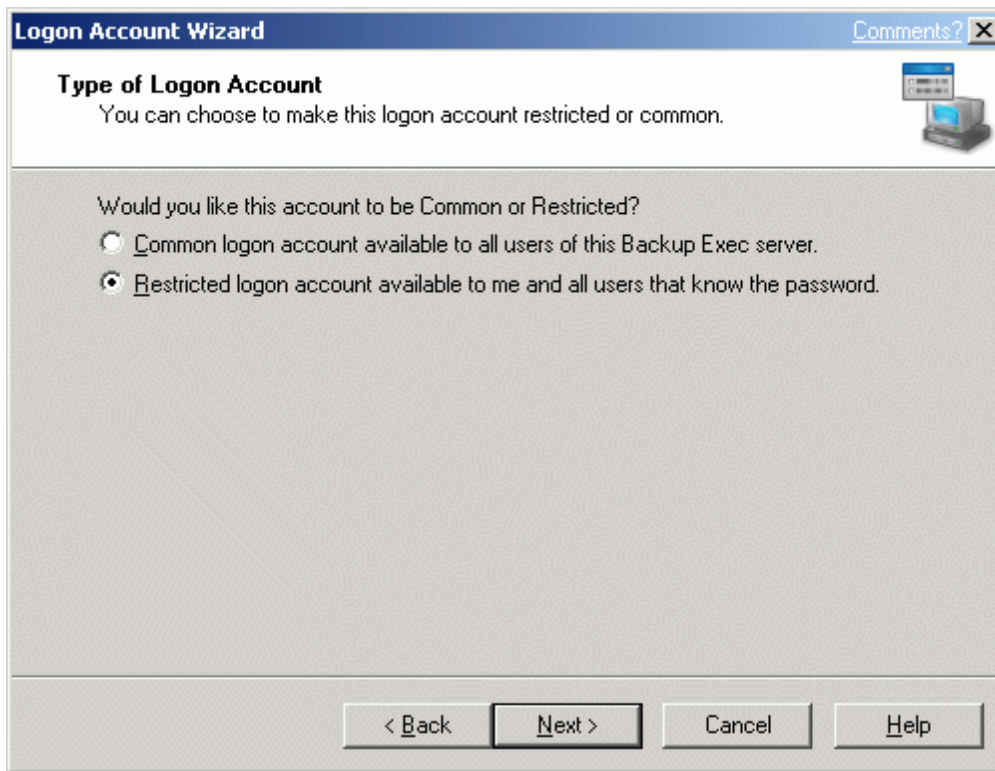
Enter a meaningful account name for this logon account.

Admin account

< Back **Next >** Cancel Help

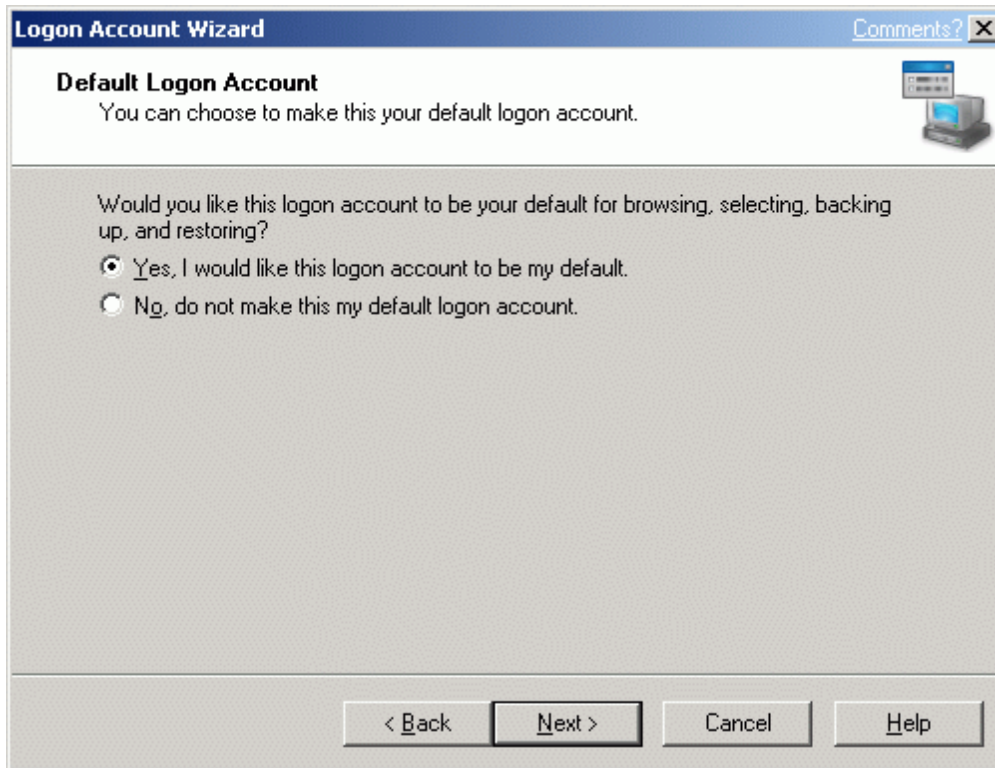
Press the **Next** button to continue.

Choose to make logon account restricted or common.



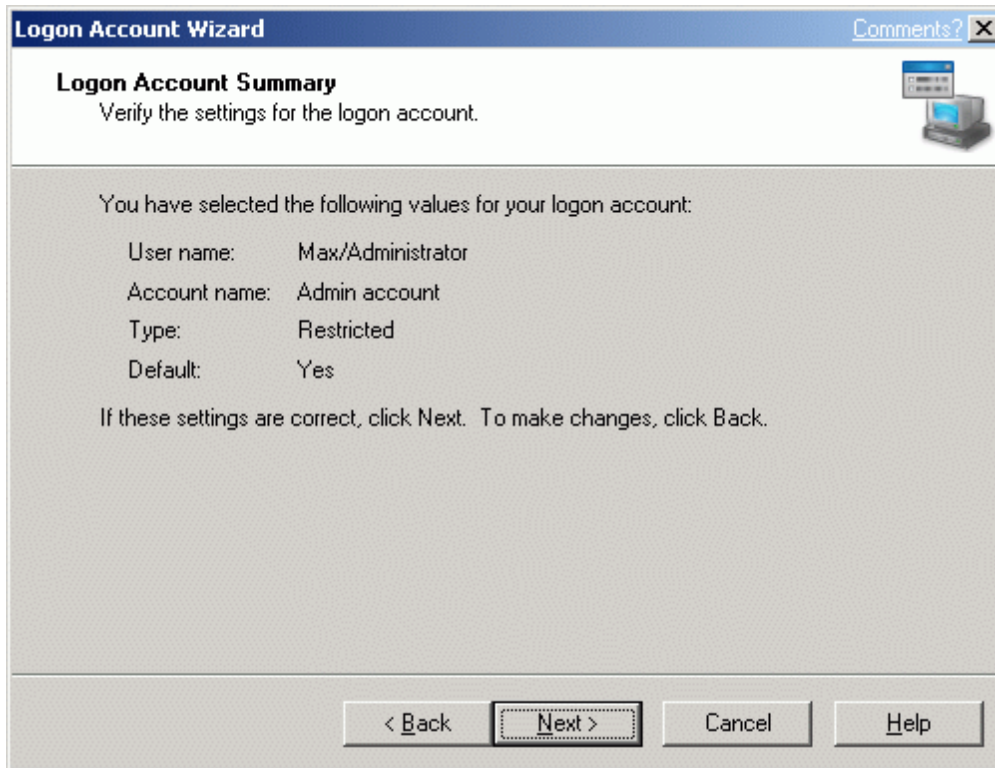
Press the **Next** button to continue.

Select if the account should be a default one.



Press the **Next** button to continue.

Verify the settings for the logon account. Press the **Back** button if changes are required.



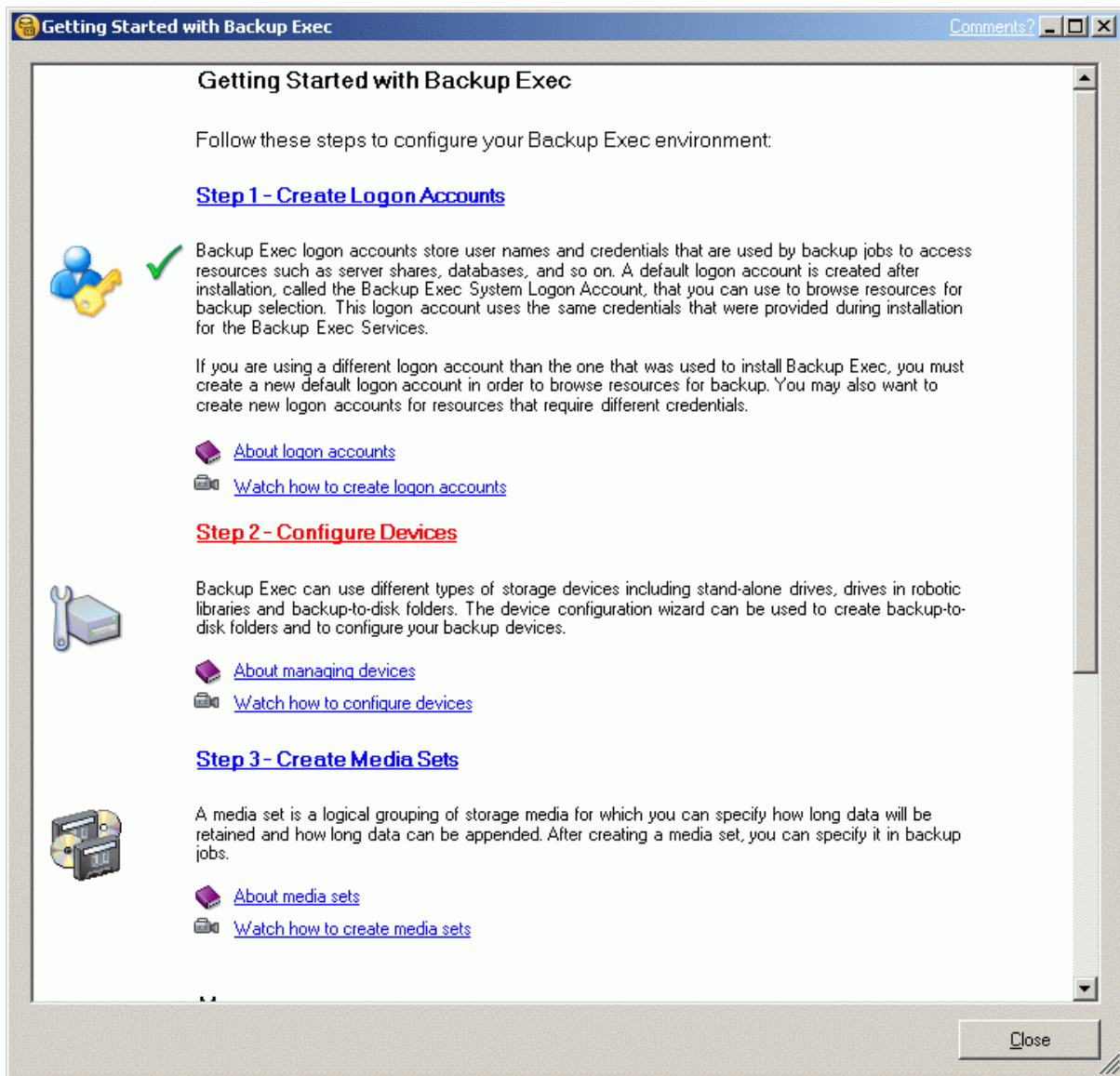
Press the **Next** button to continue.

Optionally Check the **Add...** checkbox to add another logon account.



Press the **Finish** button.

You will be returned back to the Getting started page.



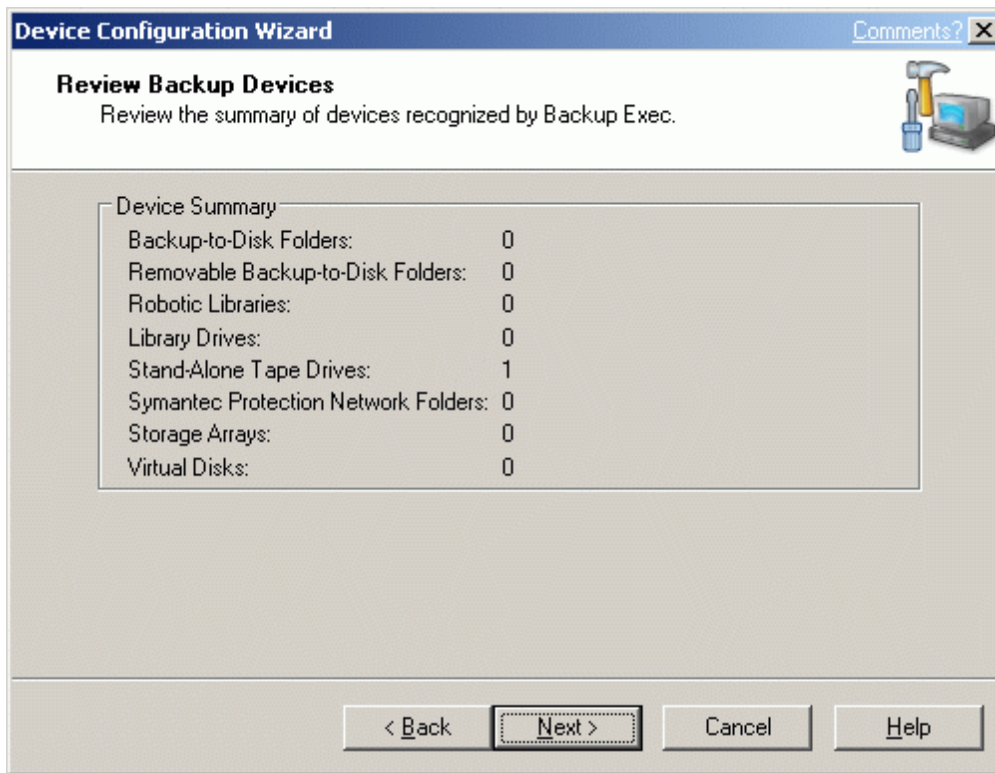
Click on the "Step 2 - Configure Devices"

The Device Configuration Wizard window will appear.



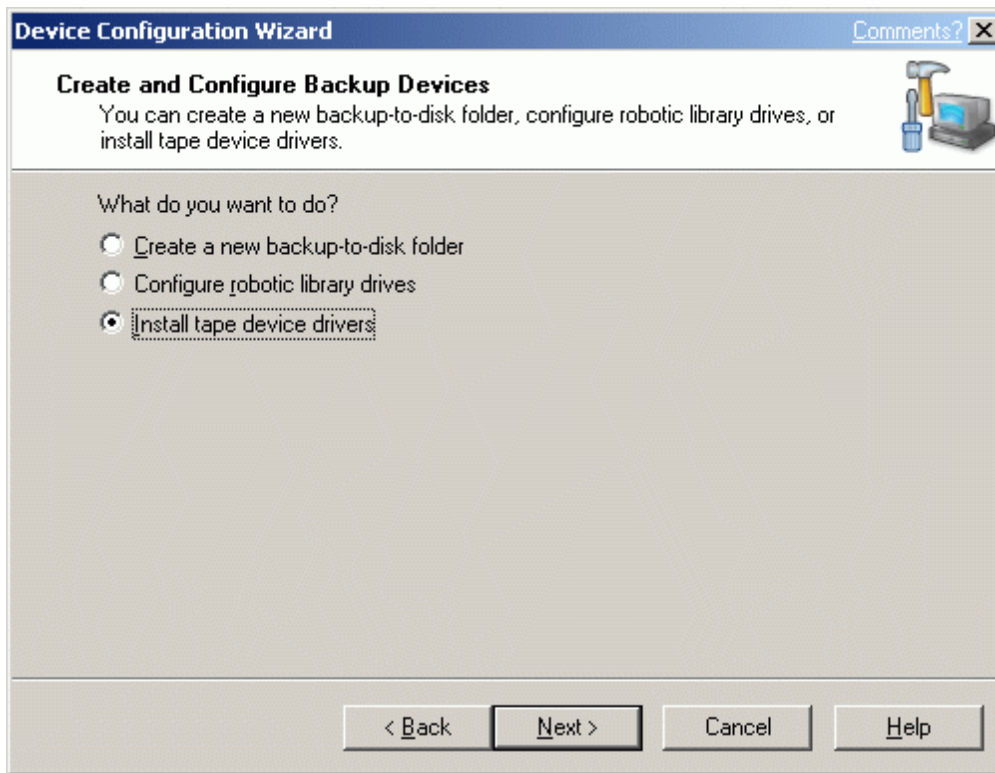
Press the **Next** button.

Backup Exec will review the devices available for performing backups.



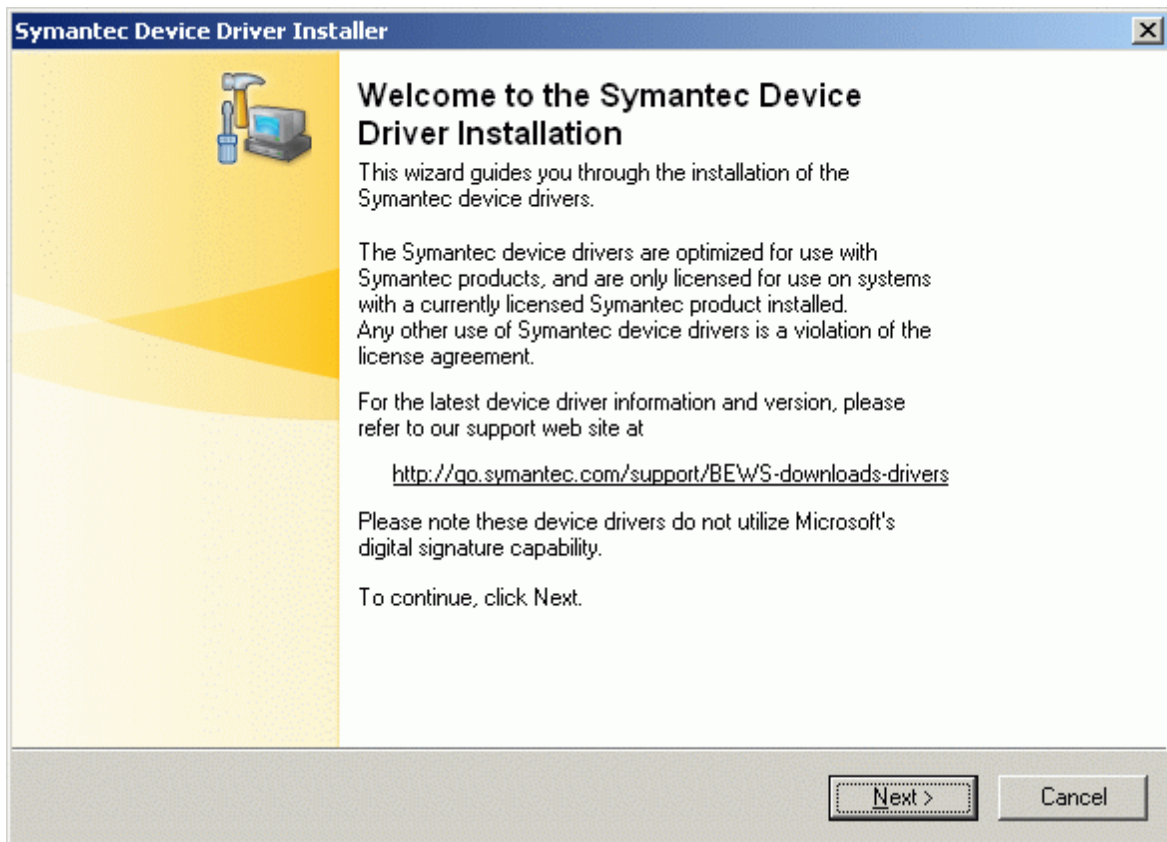
Press the **Next** button.

Select the "Install tape device drivers" option.



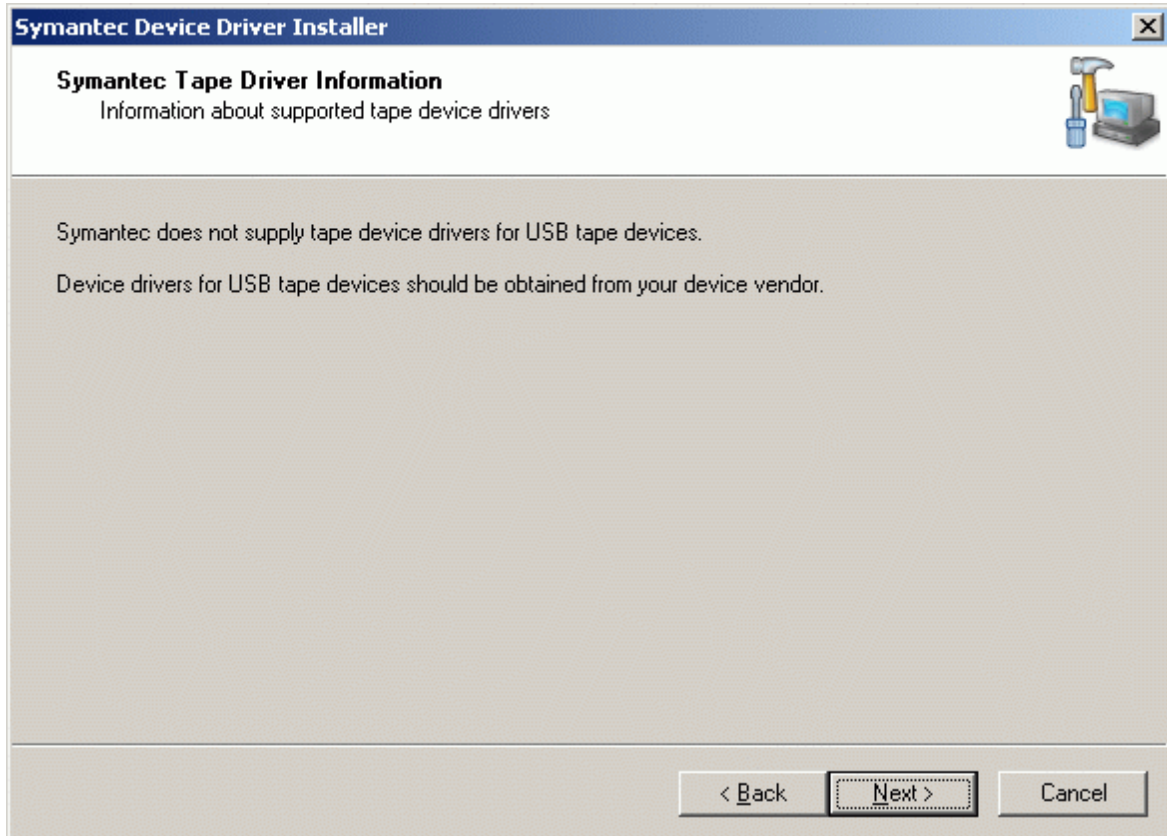
Press the **Next** button.

Driver Installer window will appear.



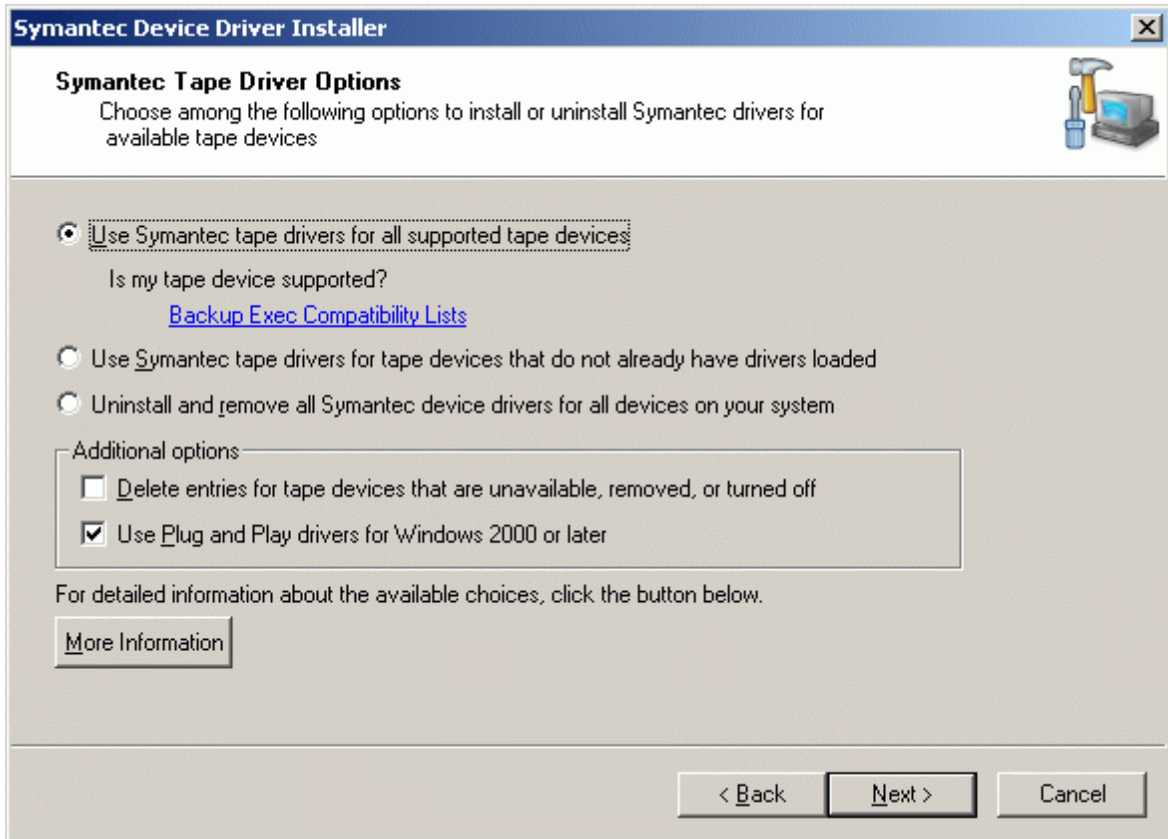
Press the **Next** button.

Installer warns that driver does not support USB tape drives, if you are using one - refer to the device vendors for the drivers.



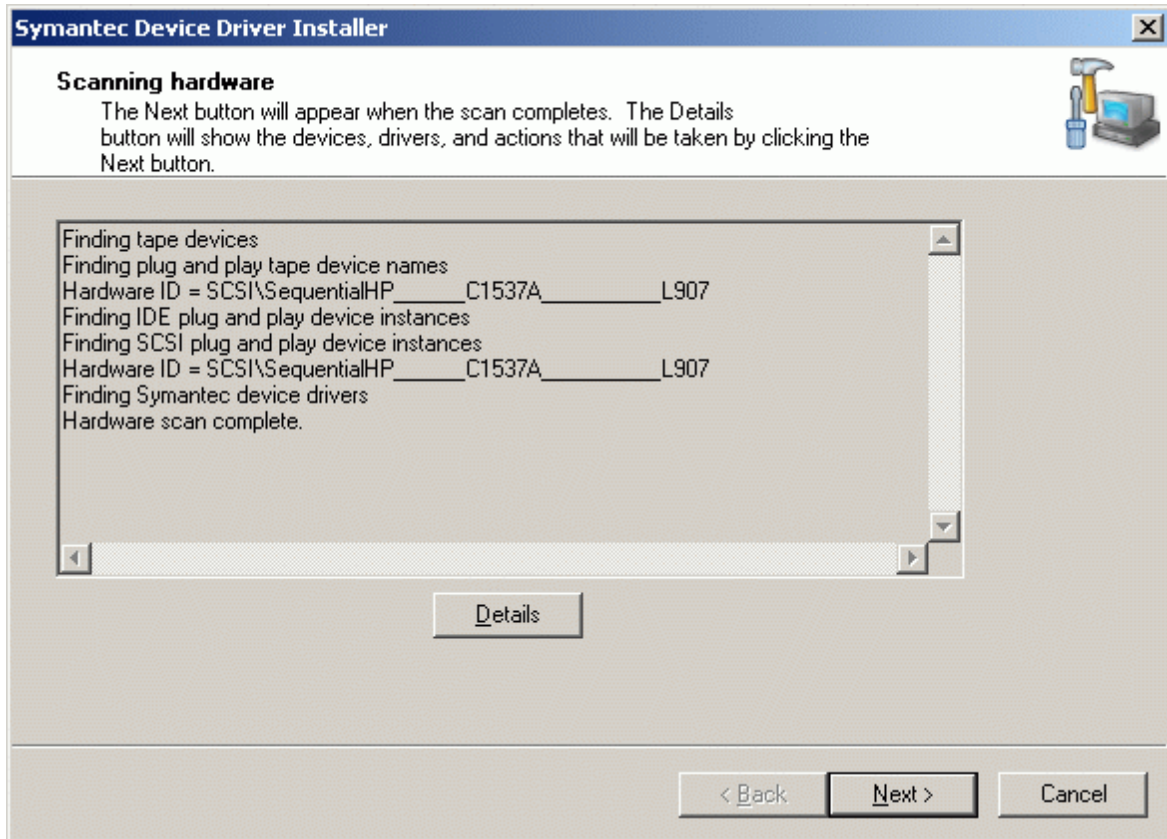
Press the **Next** button to continue or close the wizard and install the drivers manually if you're using a **USB** tape drive.

Select "Use Symantec tape drivers for all supported tape devices".



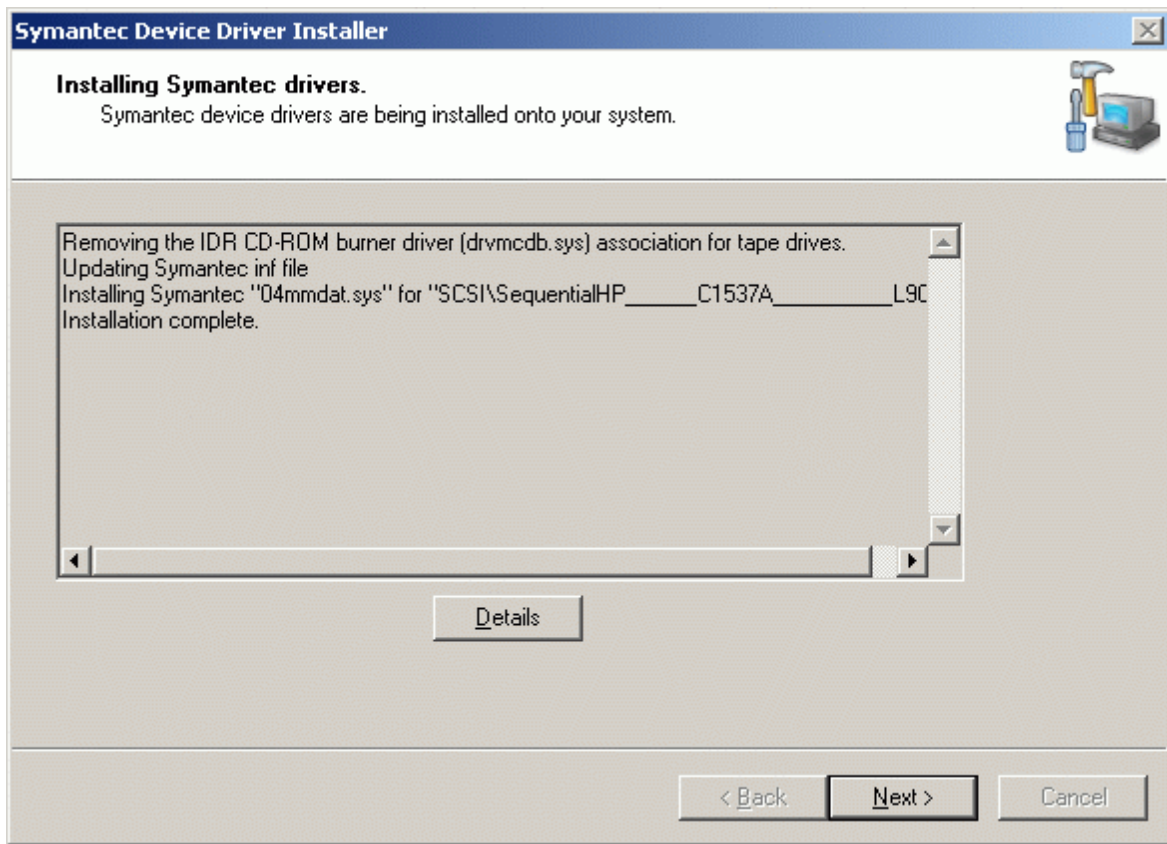
Press the **Next** button.

The installer will scan your system for supported tape drives.



Press the **Next** button.

The installer indicates the drivers have been successfully installed.



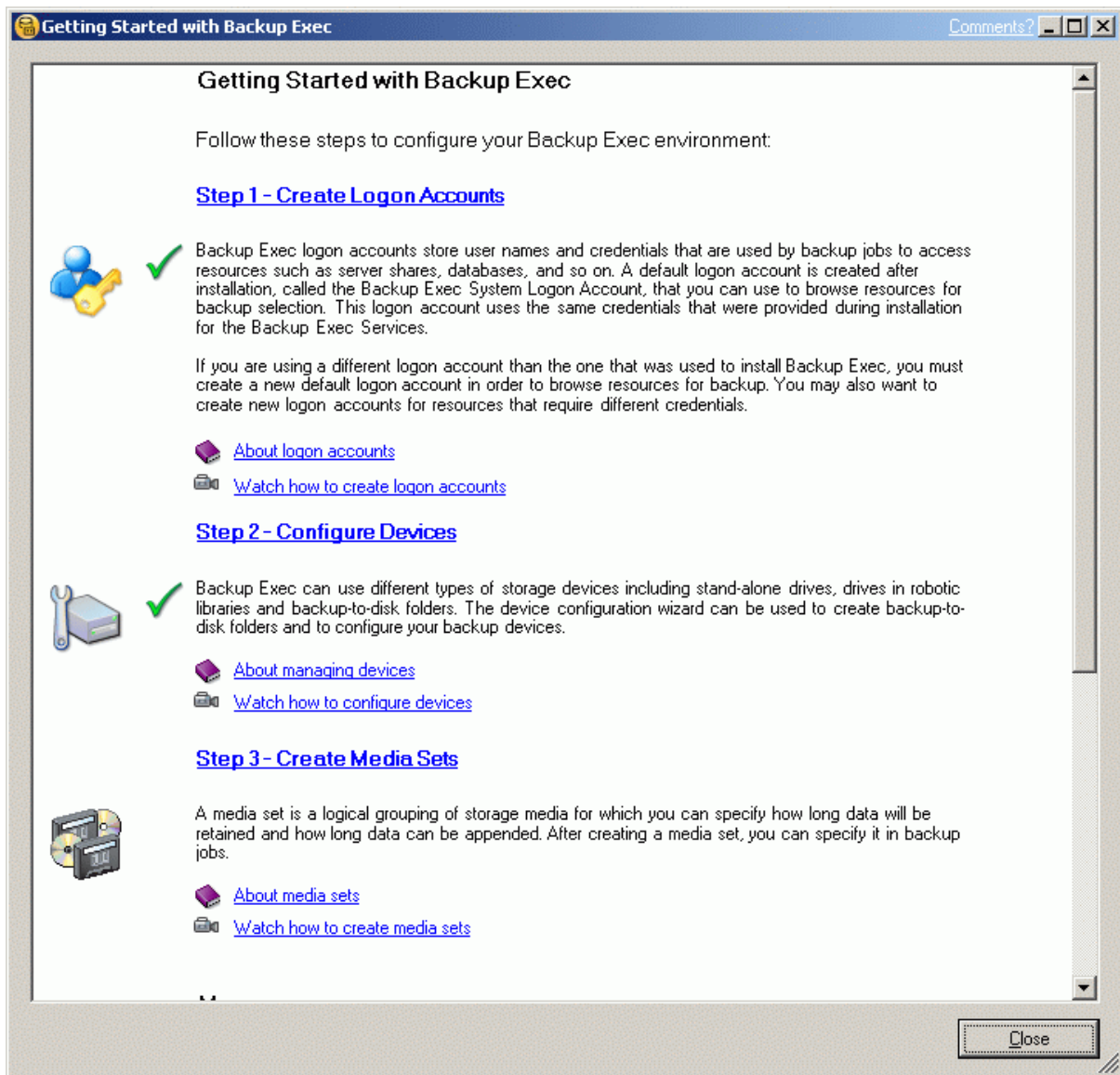
Press the **Next** button.

Driver installation is complete.



Press the **Finish** button to continue.

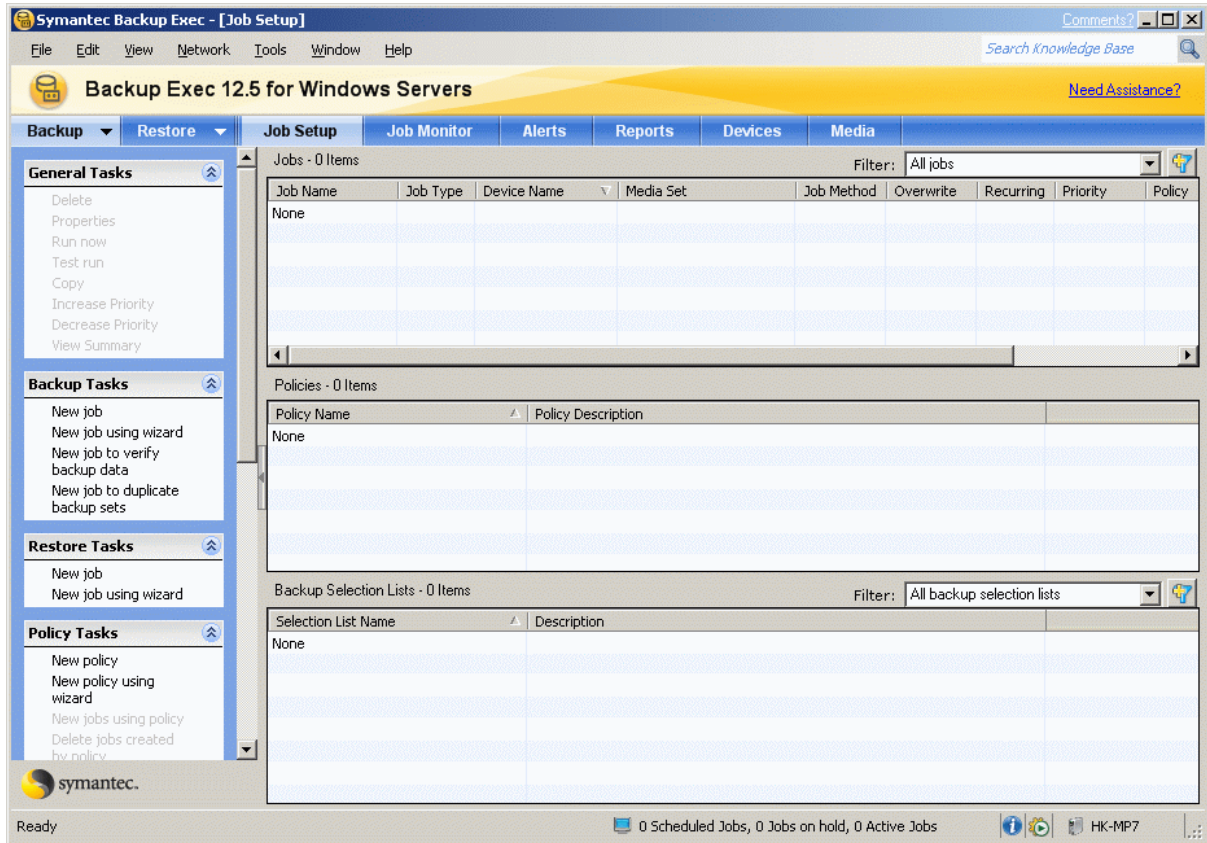
Once again you will be returned to the Getting Started window.



Close the window.

Performing backup

Open the BackupExec application.



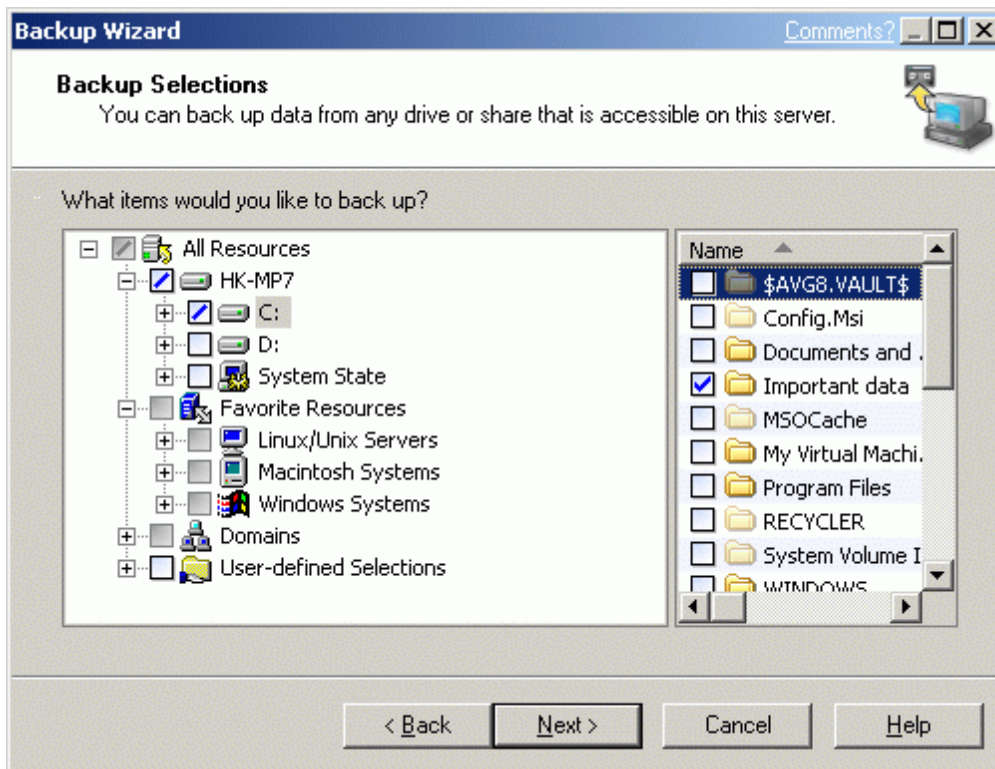
Press the **Backup** button to continue.

A Backup wizard window will appear.
Select the "Create a backup job with custom settings"



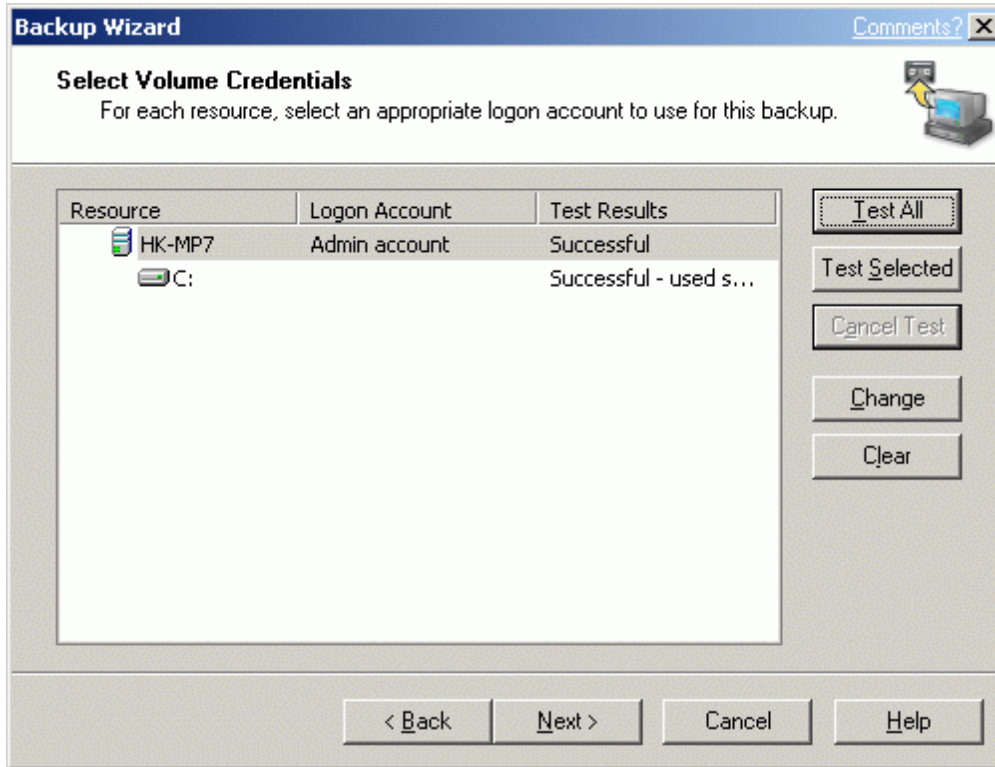
Press the **Next** button to continue.

Select the data to be backed up.



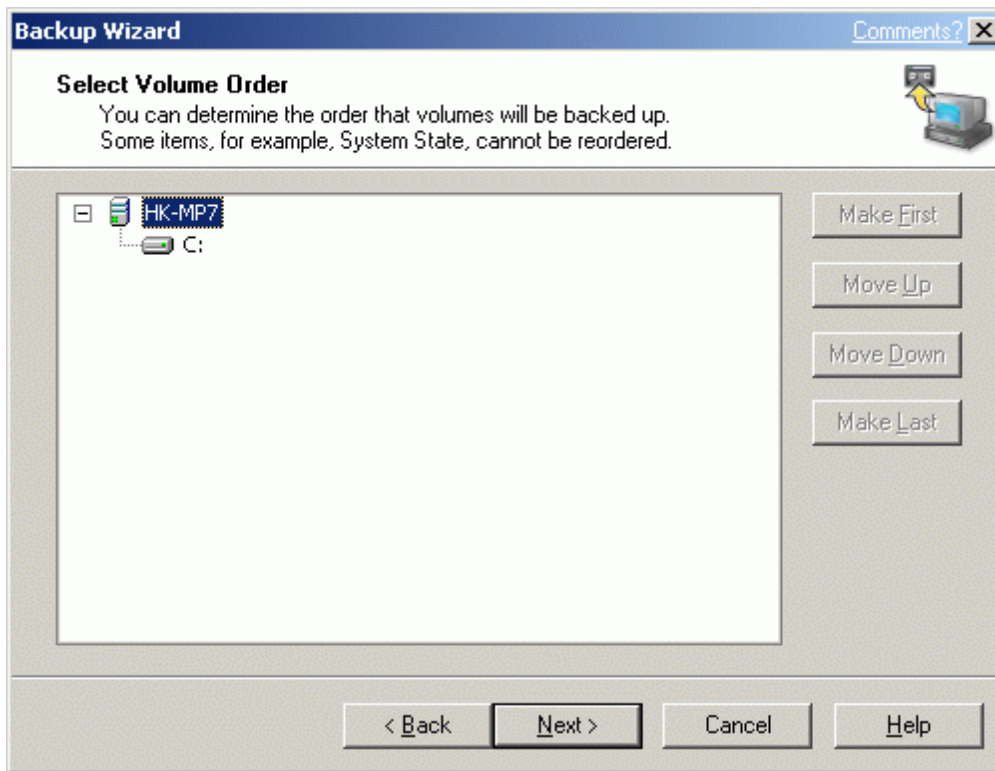
Press the **Next** button to continue.

Specify the logon account for the resource if needed.
Then test all the resources.



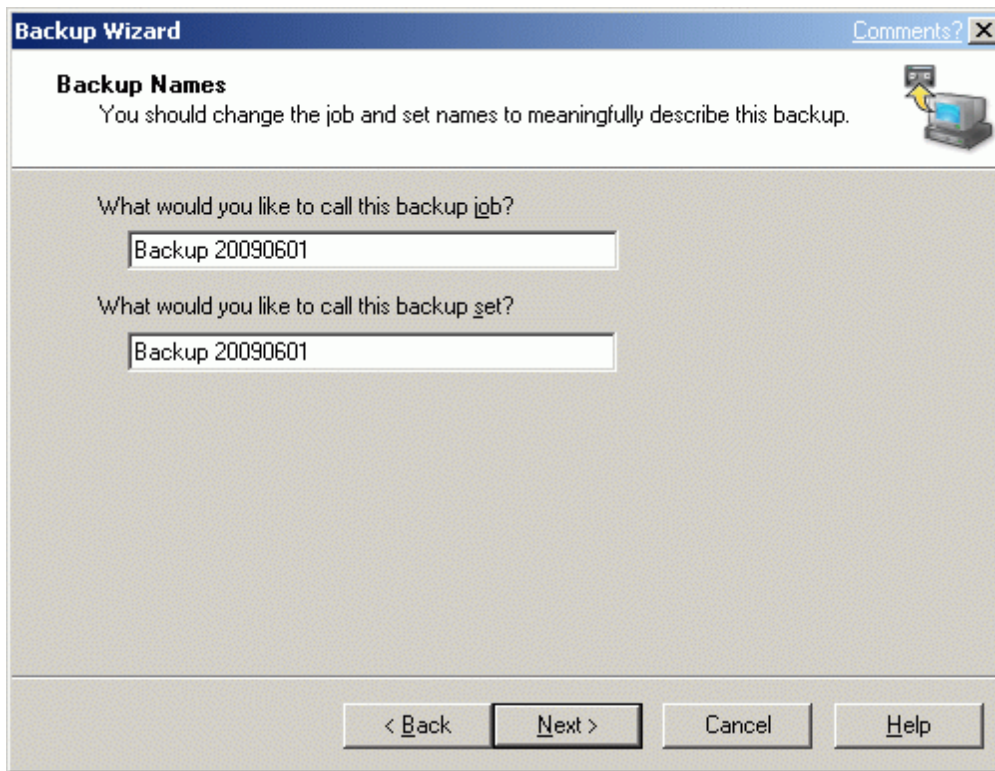
Press the **Next** button to continue.

Select the order in which the volumes will be backed up.



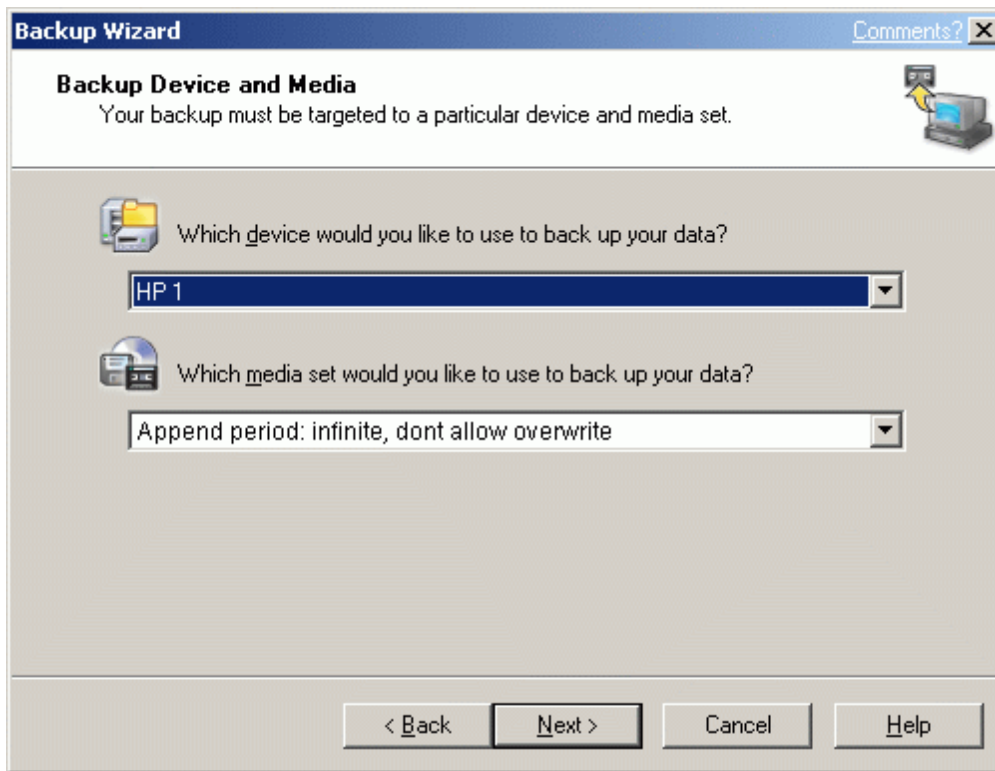
Press the **Next** button to continue.

Specify a meaningful name for your backup job.



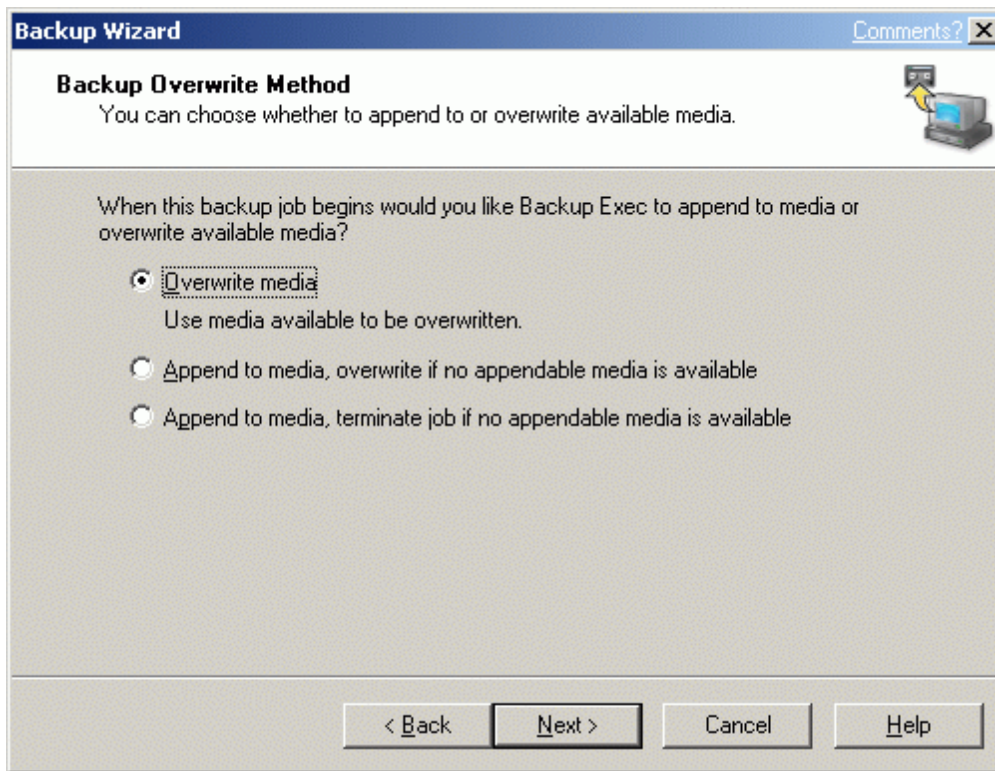
Press the **Next** button to continue.

Select the destination backup device.



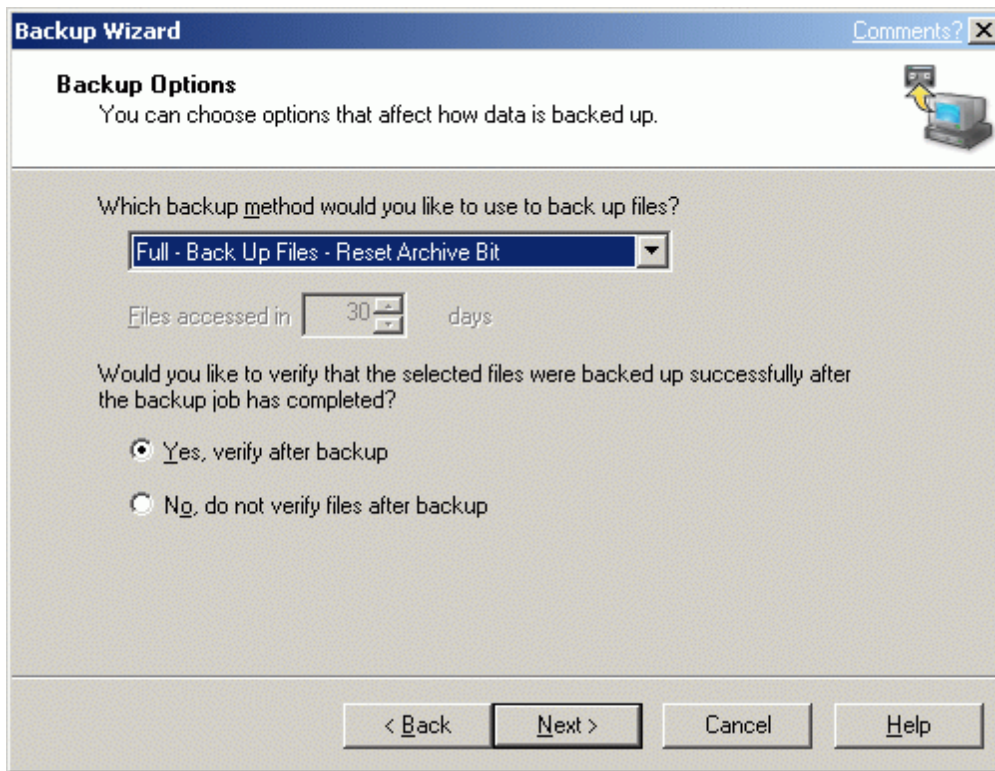
Press the **Next** button to continue.

Specify the overwrite options.



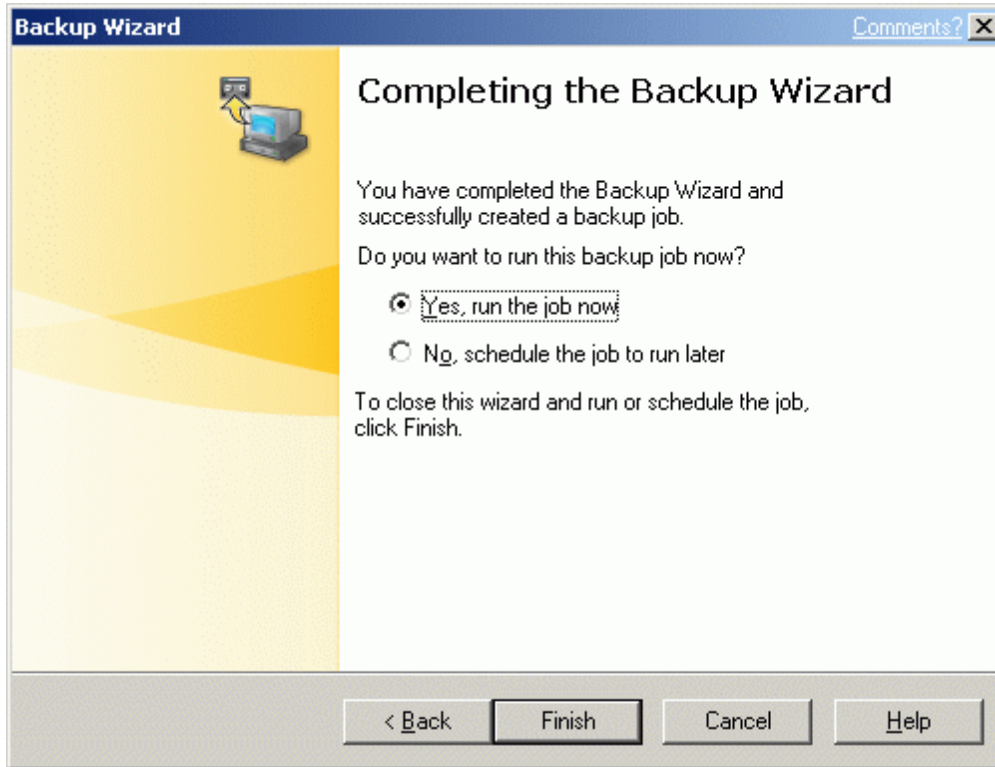
Press the **Next** button to continue.

Select backup options.



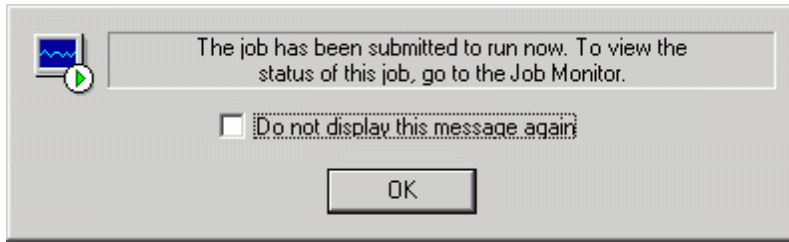
Press the **Next** button to continue.

Complete the backup wizard by selecting whether to run the job now or schedule it for later.



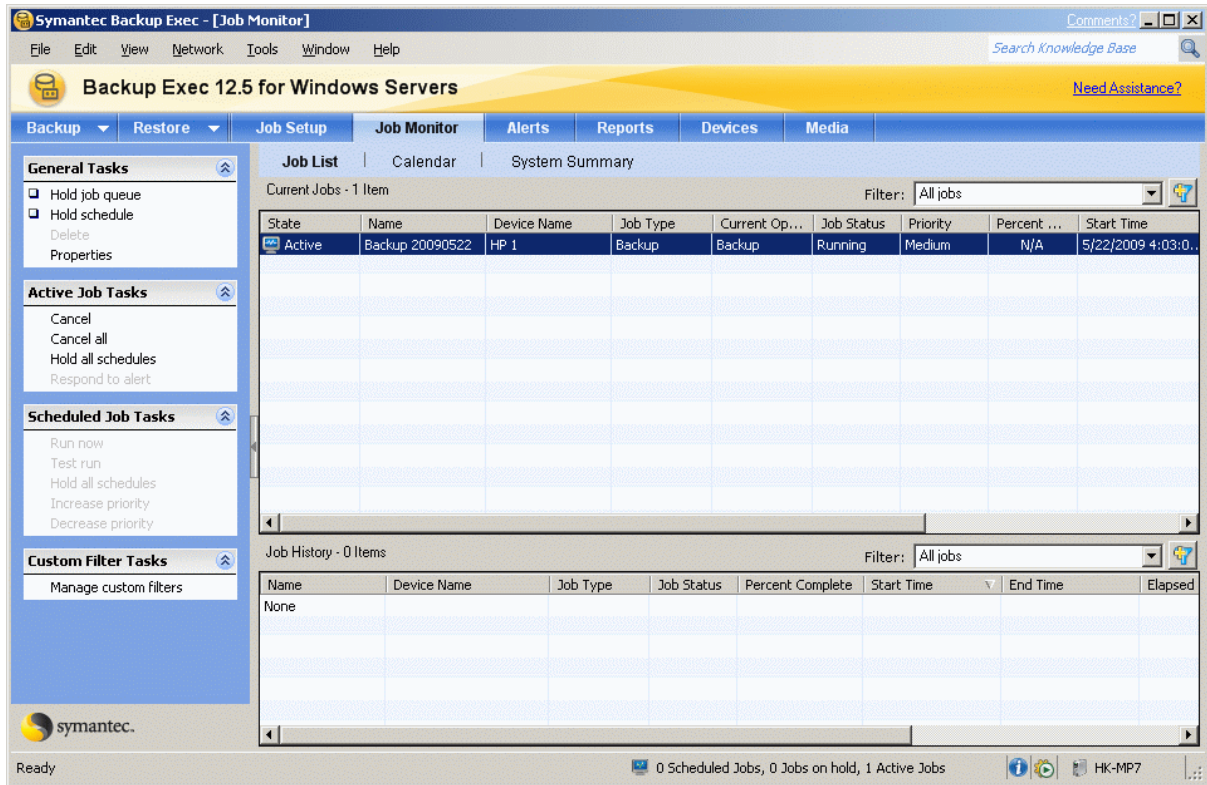
Press the **Finish** button to continue.

The information dialog appears



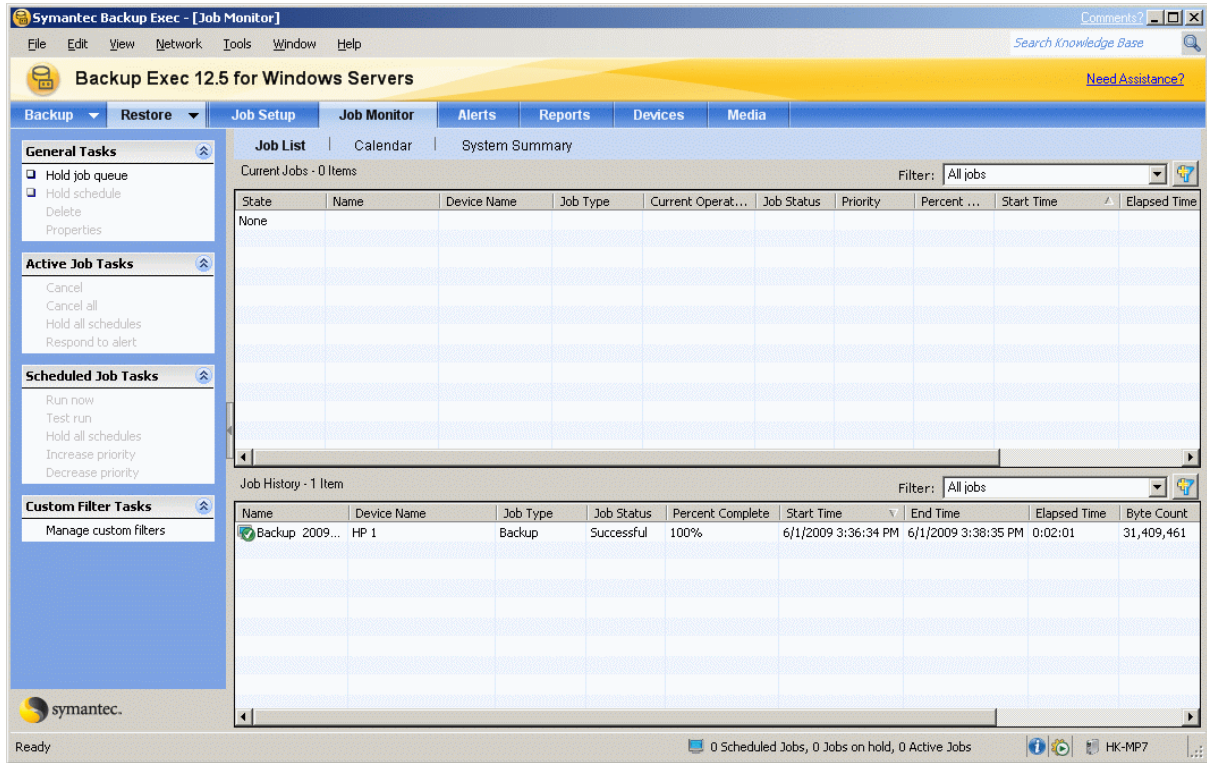
Press the **OK** button.

Switch to Job Monitor. Here you can see all the backup process.



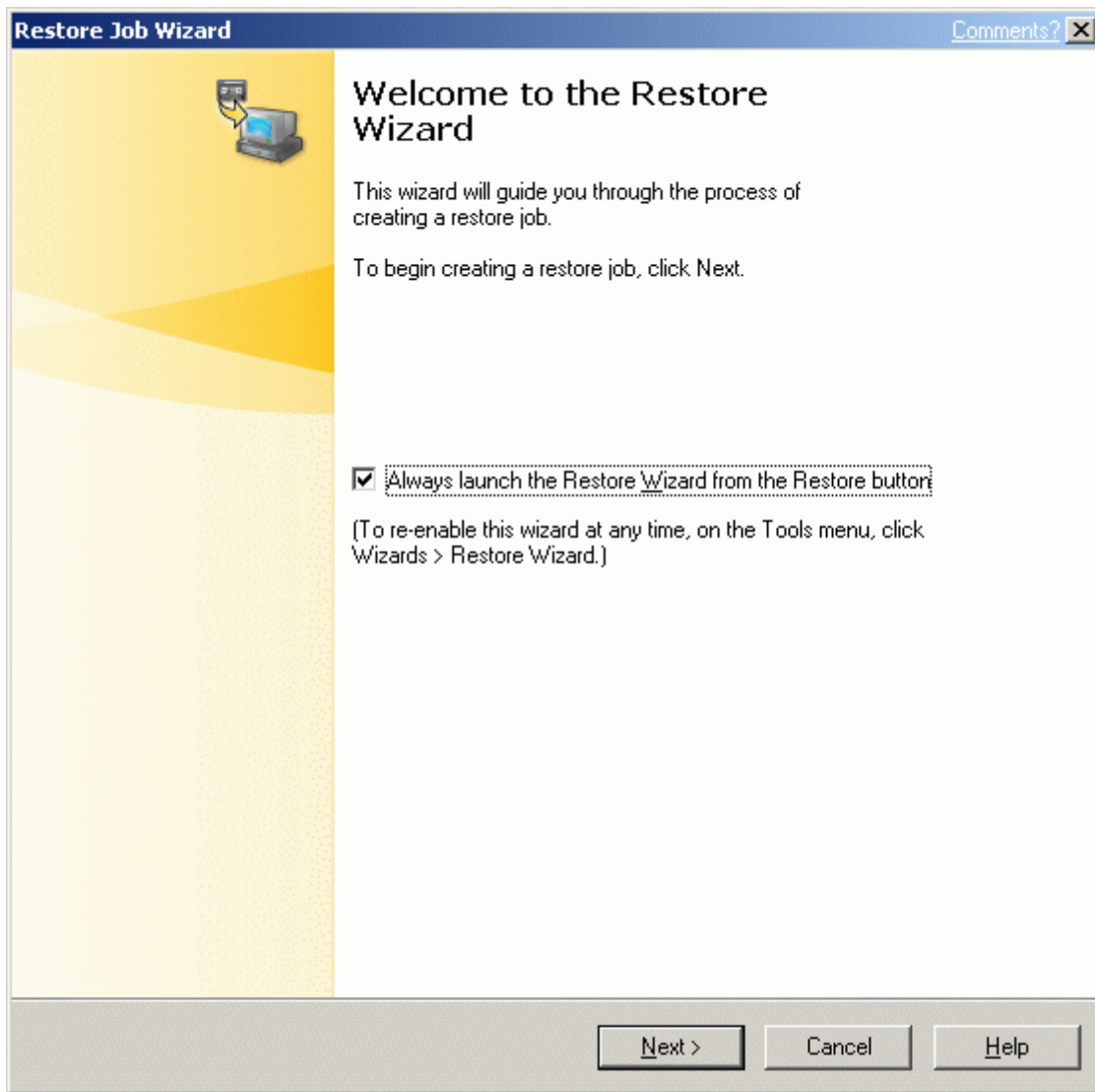
Restoring data

Open Backup Exec application.



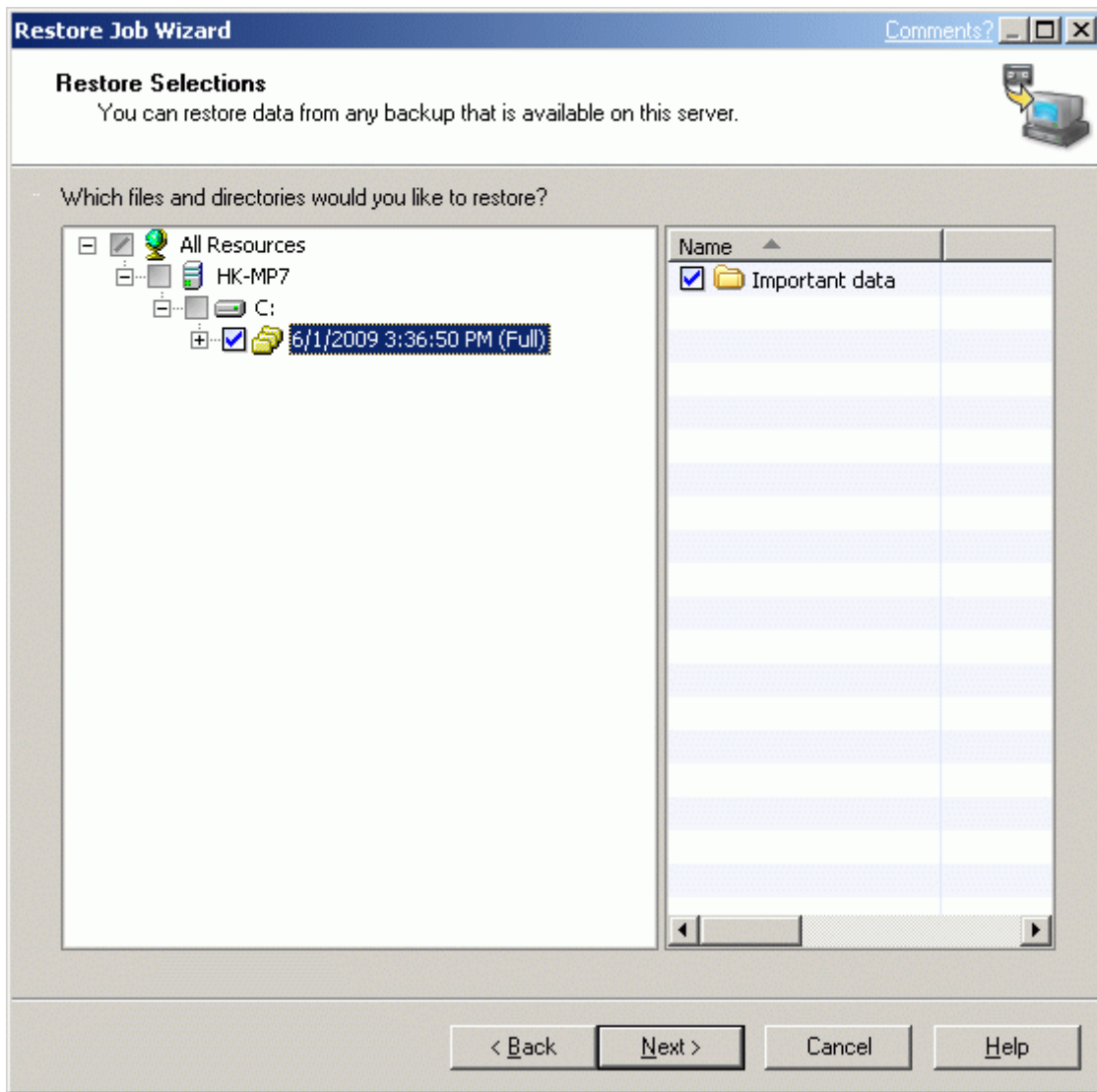
Press the **Restore** button to continue.

Restore wizard window will appear.



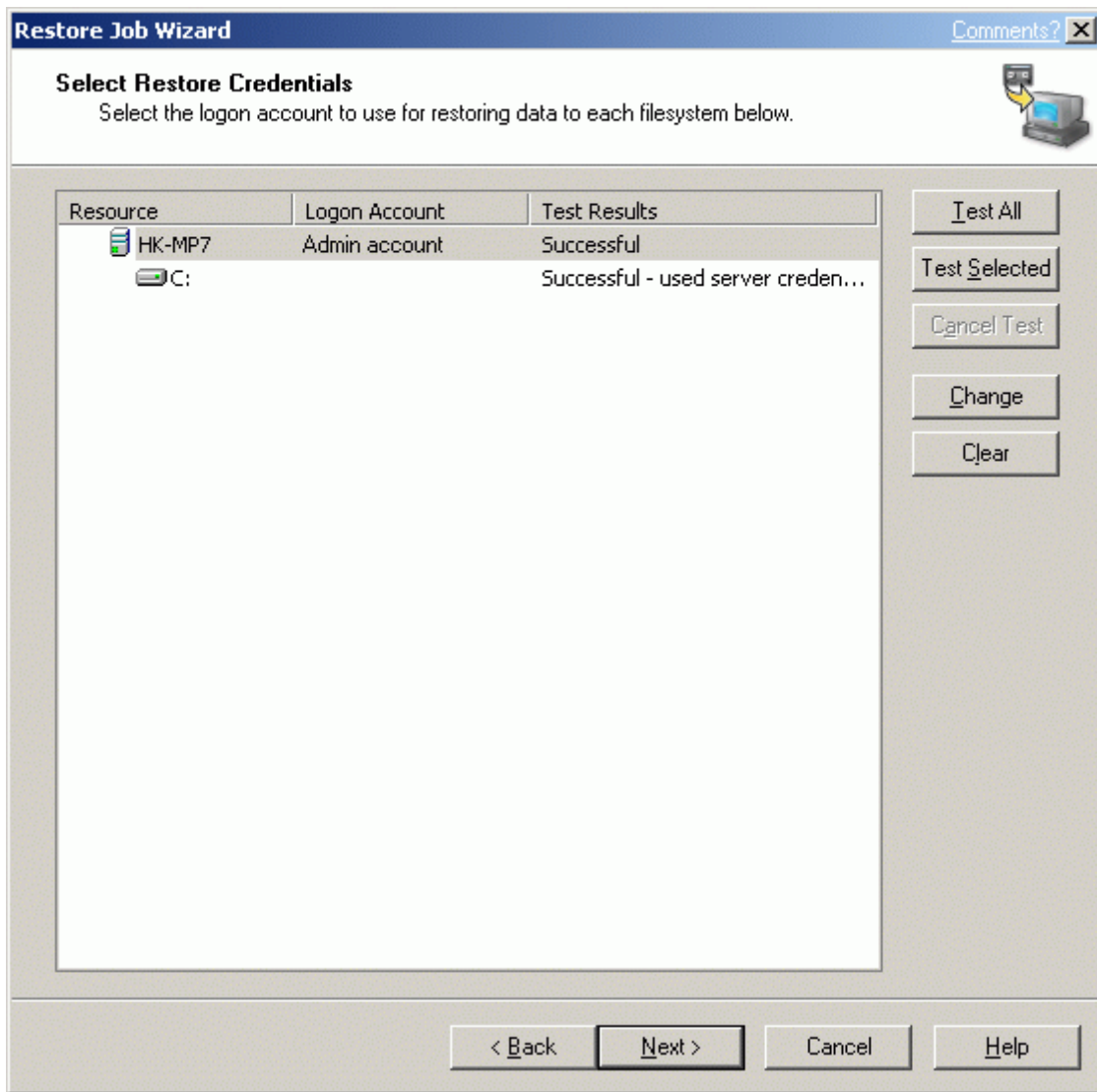
Press the **Next** button to continue.

Select the resources to be restored.



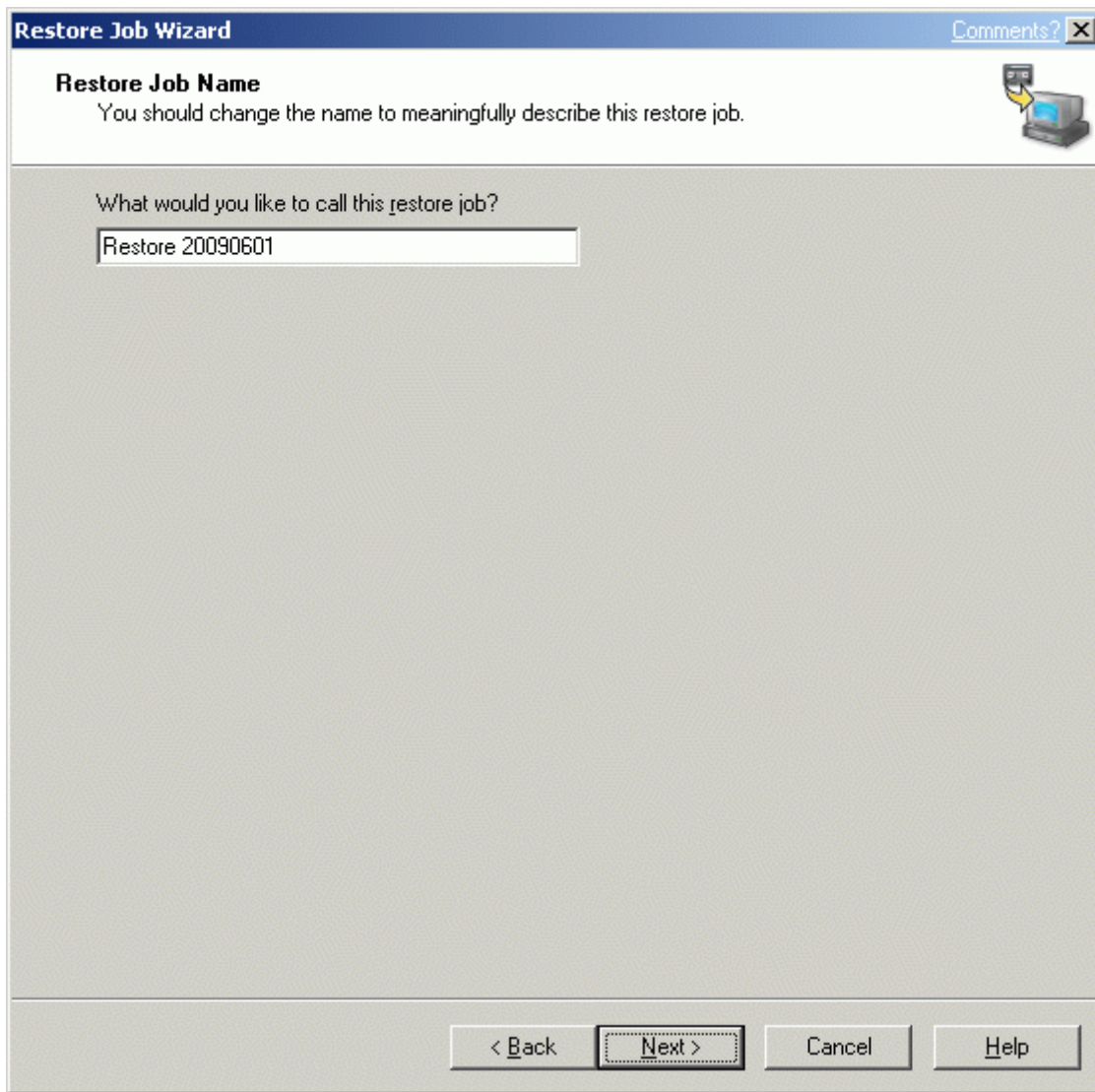
Press the **Next** button to continue.

Specify the logon accounts for the job.



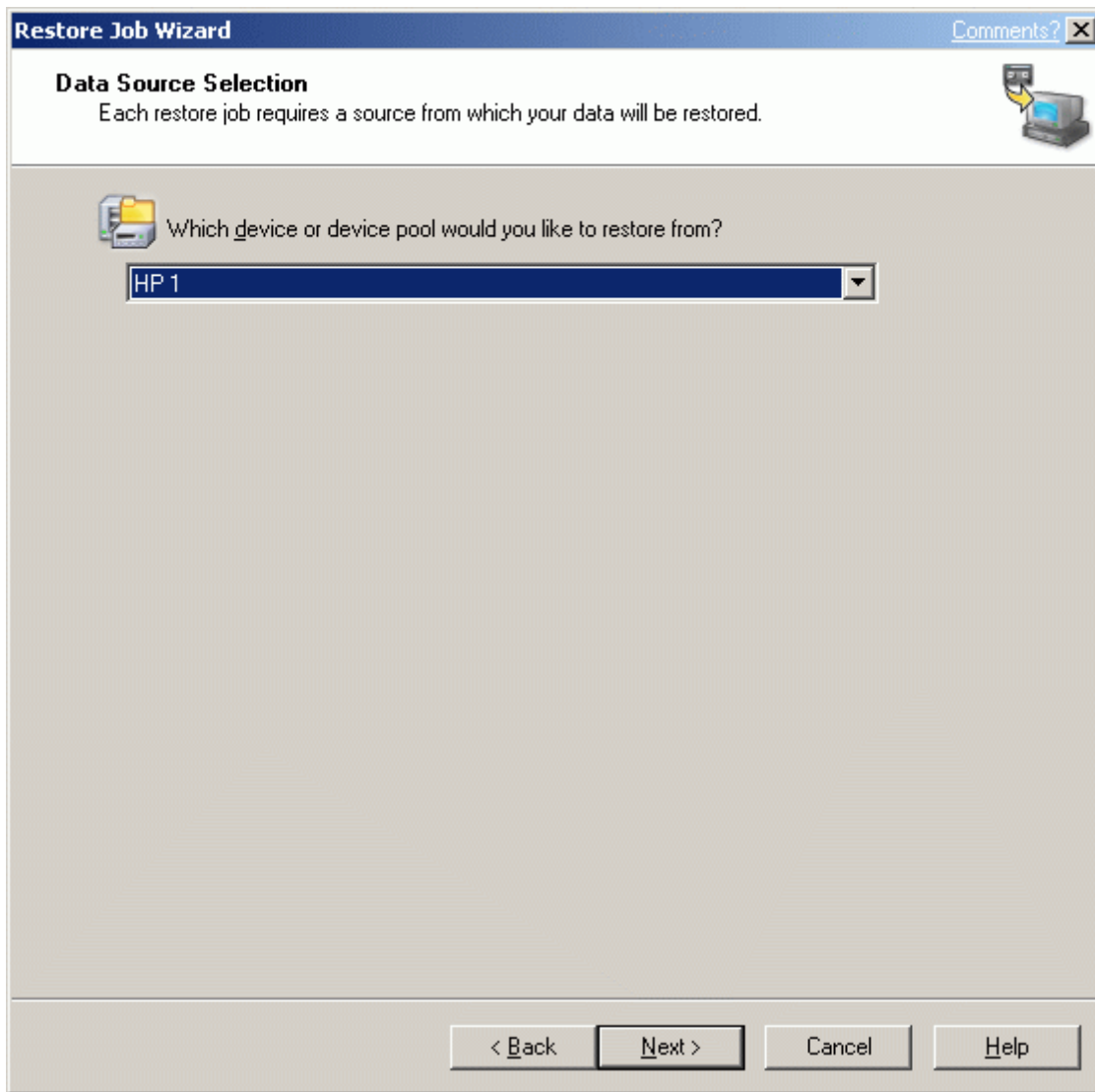
Press the **Next** button to continue.

Specify a meaningful name for the job.



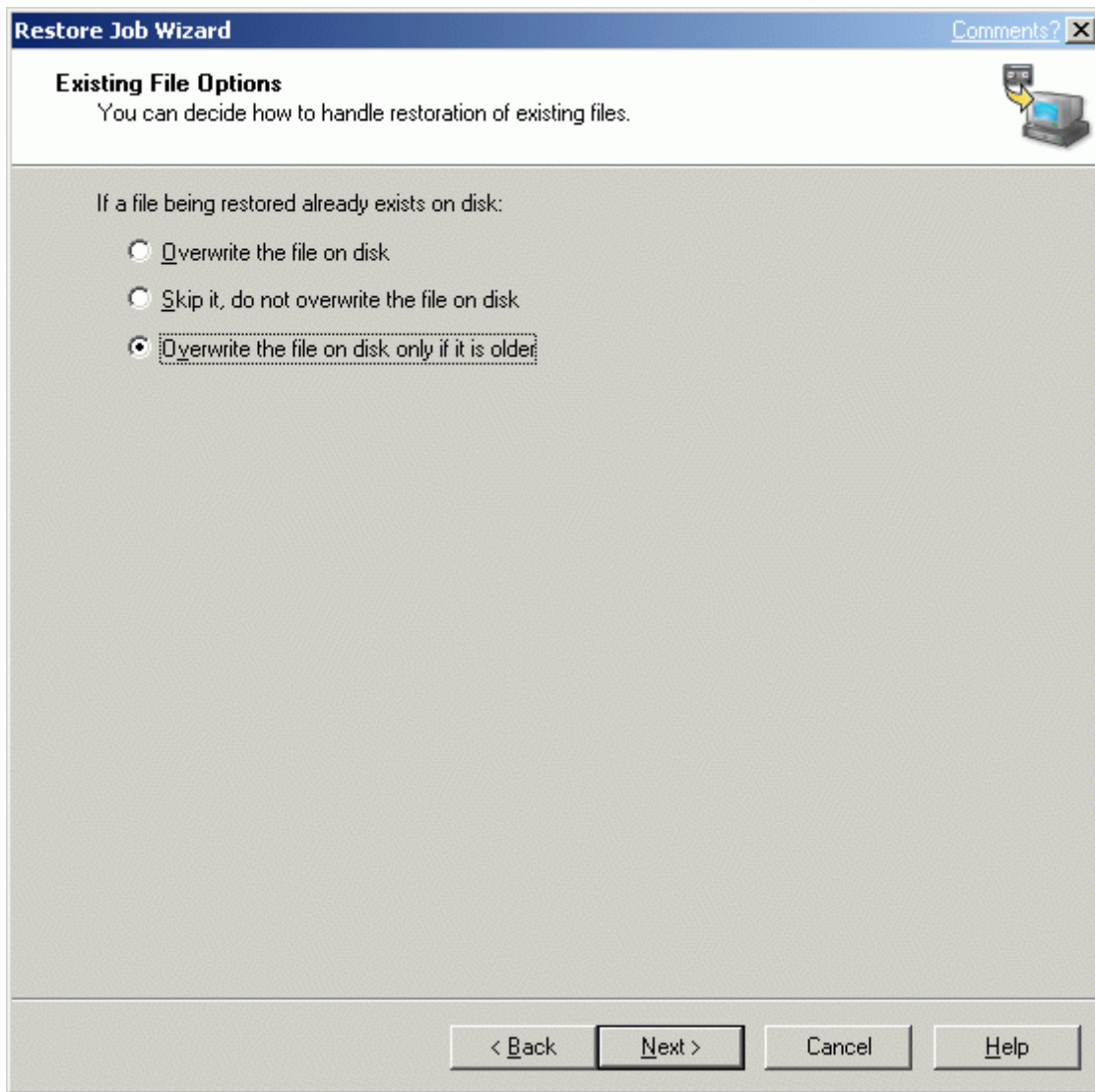
Press the **Next** button to continue.

Select the source device to restore from.



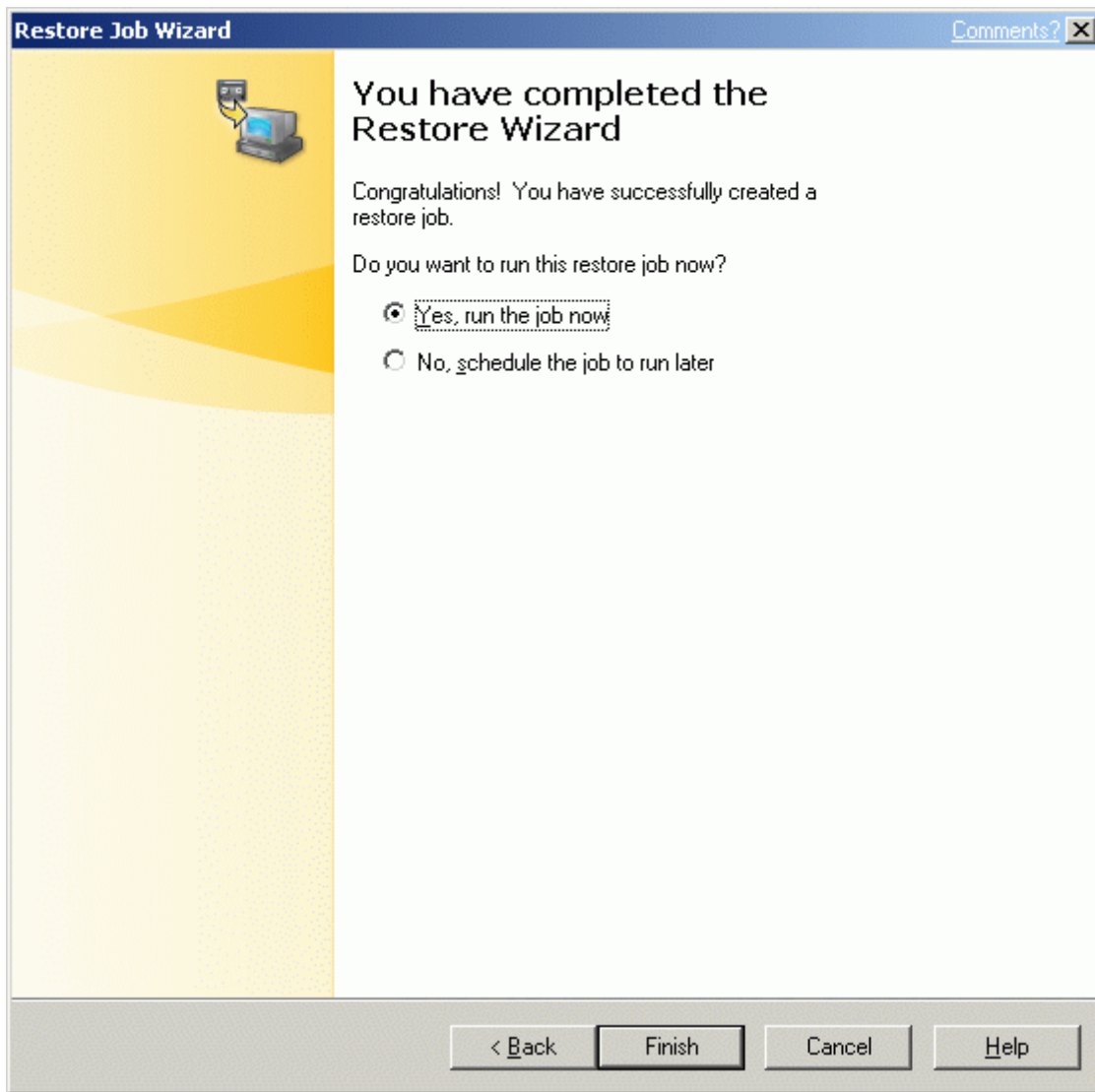
Press the **Next** button to continue.

Select overwrite options.



Press the **Next** button to continue.

Complete the restore job wizard.



Press the **Finish** button.

A dialog window will appear.



Press the **OK** button.

Switch to the Job Monitor screen to view the restoring process.

The screenshot shows the Symantec Backup Exec Job Monitor window. The interface includes a menu bar (File, Edit, View, Network, Tools, Window, Help), a search bar, and a navigation pane with tabs for Backup, Restore, Job Setup, Job Monitor, Alerts, Reports, Devices, and Media. The Job Monitor tab is active, displaying a 'Job List' table with columns for State, Name, Device Name, Job Type, Current Operat..., Job Status, Priority, Percent..., Start Time, and Elapsed T. A single job is listed: 'Restore 20090601' on device 'HP 1', with a status of 'Running' and 18% completion. Below the Job List is a 'Job History' table with columns for Name, Device Name, Job Type, Job Status, Percent Complete, Start Time, End Time, Elapsed Time, and Byte Count. A single history entry is shown: 'Backup 2009...' on device 'HP 1', with a status of 'Successful' and 100% completion. The status bar at the bottom indicates '0 Scheduled Jobs, 0 Jobs on hold, 1 Active Jobs'.

State	Name	Device Name	Job Type	Current Operat...	Job Status	Priority	Percent ...	Start Time	Elapsed T
Active	Restore 20090601	HP 1	Restore	Restore	Running	Medium	18%	6/1/2009 3:45:14 PM	0:00:37

Name	Device Name	Job Type	Job Status	Percent Complete	Start Time	End Time	Elapsed Time	Byte Count
Backup 2009...	HP 1	Backup	Successful	100%	6/1/2009 3:36:34 PM	6/1/2009 3:38:35 PM	0:02:01	31,409,461

Contacts

Support: www.starwindsoftware.com/support

Support Forum: www.starwindsoftware.com/forums

Sales E-mail: sales@starwindsoftware.com

US Headquarters

Direct phone number: 1-617-449-7717

Fax: 1-617-507-5845

EMEA, APAC

Direct phone numbers: +44-0-2071936727

+44-0-2071936350

Voice Mail: 1-866-790-2646

StarWind Software Inc.

40 Mall Rd., Burlington

MA 01803, USA

www.starwindsoftware.com