

StarWind iSCSI Target for Microsoft Windows : Using StarWind for sharing CD/DVD burners for Nero

Wednesday, April 01, 2009



www.starwindsoftware.com

Copyright © StarWind Software 2008-2009. All rights reserved.

COPYRIGHT

Copyright © StarWind Software 2008-2009. All rights reserved. No part of this publication may be reproduced, stored in a retrieval system, or transmitted in any form or by any means, electronic, mechanical, photocopying, recording or otherwise, without the prior written consent of StarWind Software.

TRADEMARKS

“StarWind”, “StarWind Software” and the StarWind and the StarWind Software logos are trademarks of StarWind Software which may be registered in some jurisdictions. All other trademarks are owned by their respective owners.

CHANGES

The material in this document is for information only and is subject to change without notice. While reasonable efforts have been made in the preparation of this document to assure its accuracy, StarWind Software assumes no liability resulting from errors or omissions in this document, or from the use of the information contained herein. StarWind Software reserves the right to make changes in the product design without reservation and without notification to its users.

TECHNICAL SUPPORT AND SERVICES

If you have questions about installing or using this software, check this and other documents first - you will find answers to most of your questions here or there. If you need further assistance, please contact us.

Table of Contents

Introduction.....	4
Creating iSCSI Target.....	5
View the List of Available Burners in Nero.....	14
Connecting Target Using MS iSCSI Initiator.....	16
Burning a Disc in Nero.....	21
Disconnecting Target in MS iSCSI Initiator.....	31
Conclusion.....	34

Guide

Introduction

StarWind enables CD/DVD burners to be exported over a standard IP network. This allows you to use a centralized CD/DVD burner that can be accessed by any client machine as though it had a locally attached CD/DVD burner.

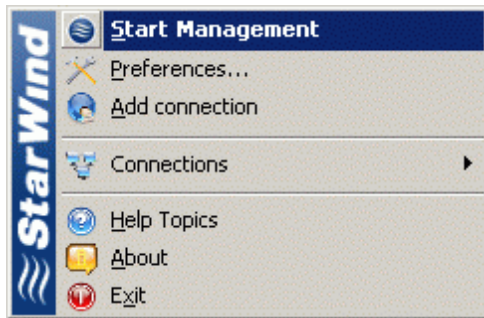
- ISO images of DVD's can be exposed to client machines using the StarWind iSCSI Target, presenting an emulated DVD-ROM from which data and applications can be accessed as though the DVD drive was local.
- Collections of DVD's can be stored on servers, eliminating the need for a physical DVD drive on each client machine.

This document provides basic step-by-step instructions for configuring StarWind to use Nero for CD/DVD sharing and burning.

For information about Nero such as system requirements, compatibility, release notes, technical support, etc., please visit <http://www.nero.com>.

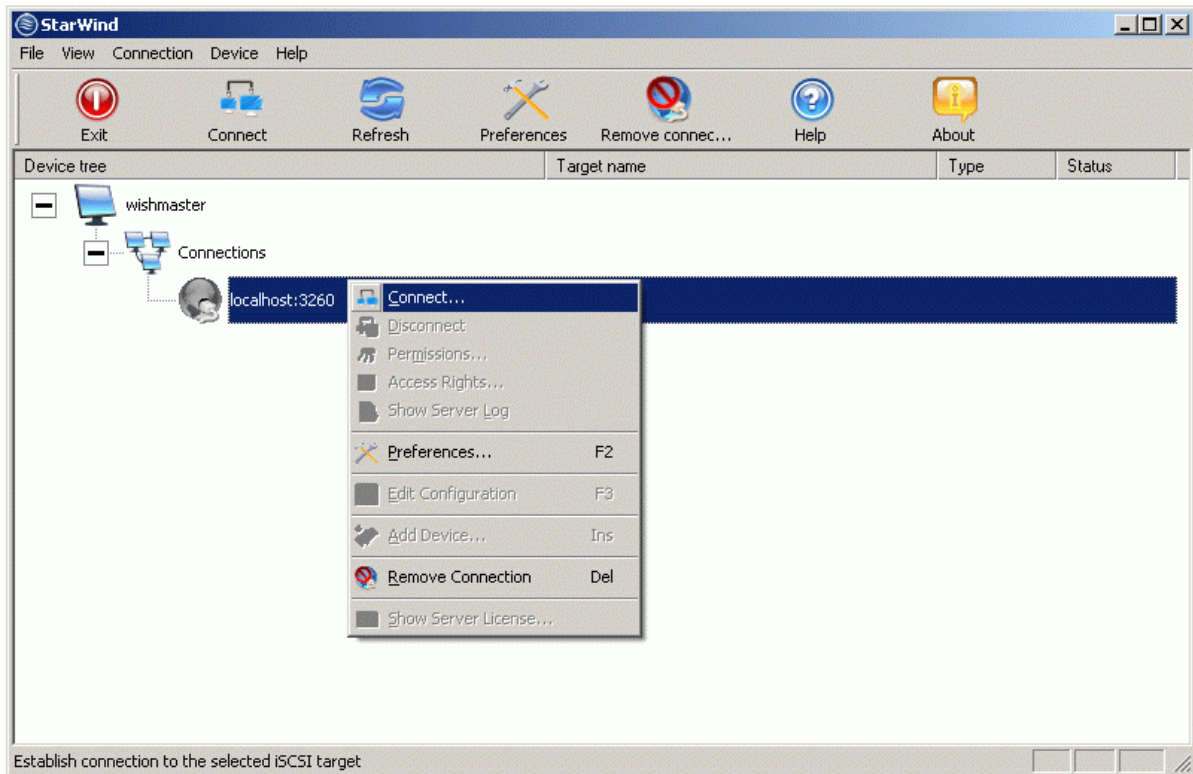
Creating iSCSI Target

Launch the **StarWind Console** by selecting **Start -> All Programs -> StarWind Software -> StarWind -> StarWind**. After the console is launched its icon appears in the system tray.



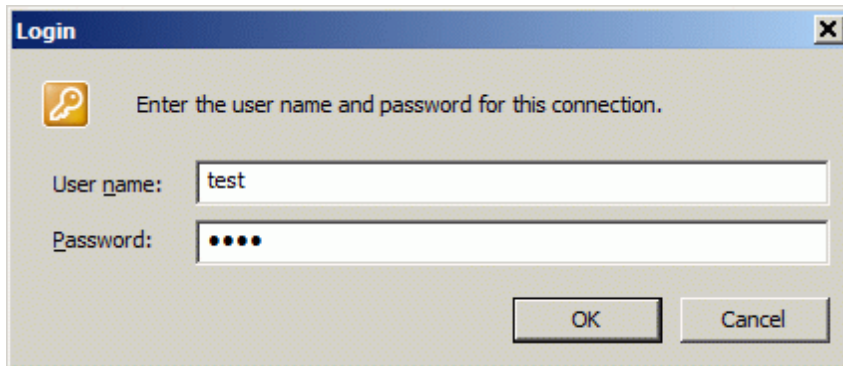
The **StarWind Console** may be accessed by either double clicking the icon using the left mouse button or single click with the right mouse button and selecting the **Start Management** menu item from the pop-up menu.

From the **Connections** tree select the computer you wish to provision the iSCSI target device on. By default, there is a single item in the tree (localhost) which represents the local computer using a loopback connection. Right click the item (localhost) to display the context menu for a computer connection.



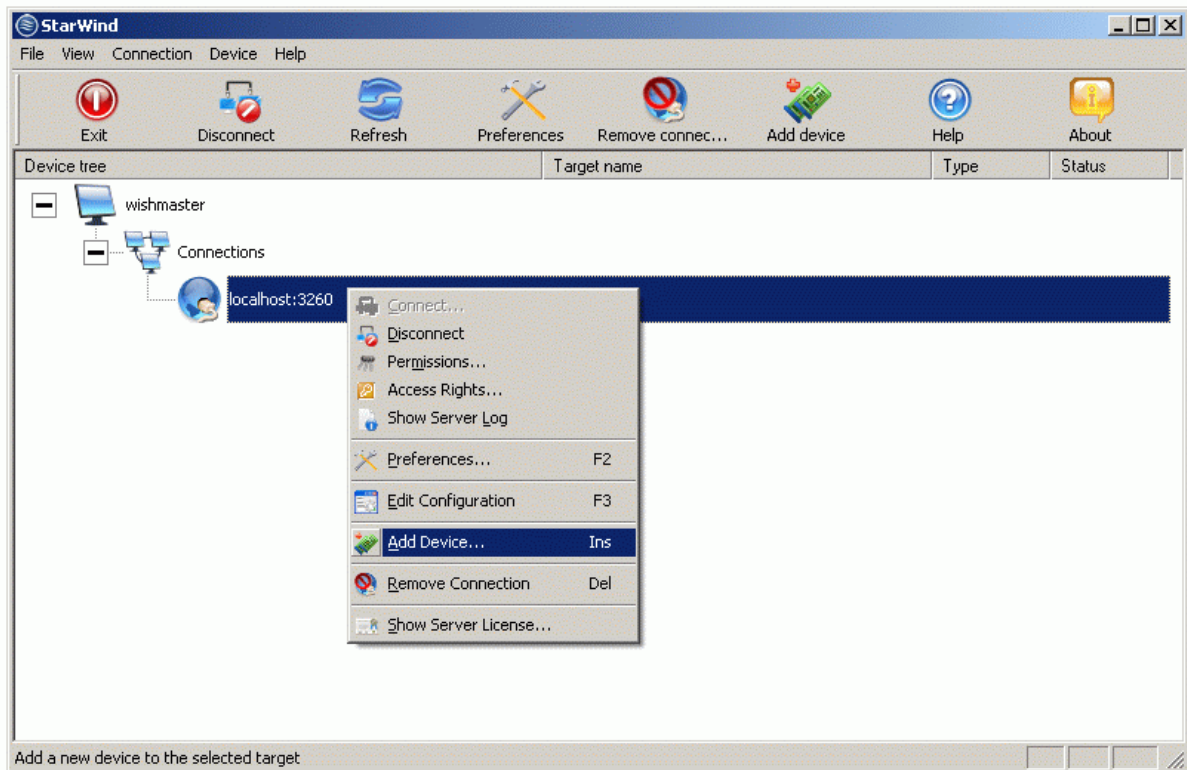
Select **Connect...** menu item to continue.

The Login dialog is presented (shown below) requiring values for user name and password. The default values configured during installation are **test, test**.



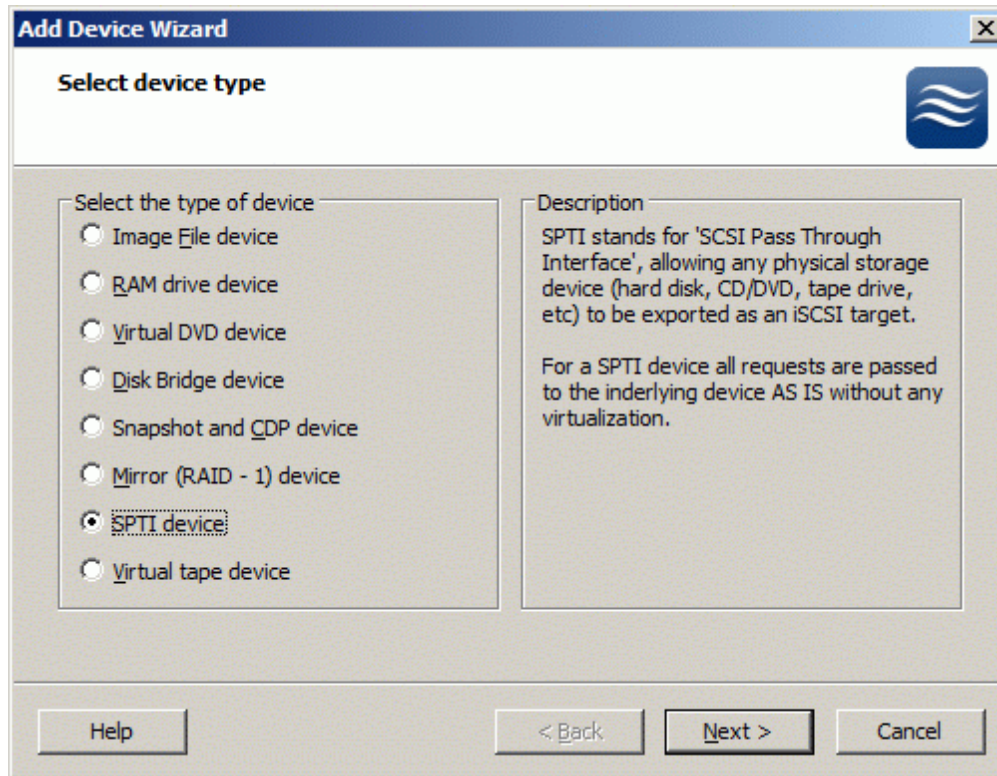
Press the **OK** button to continue.

Once again, right click the item (localhost) to display the context menu for the computer connection. Now that a successful connection has been made to the StarWind service on the remote computer, there are a number of additional options enabled.



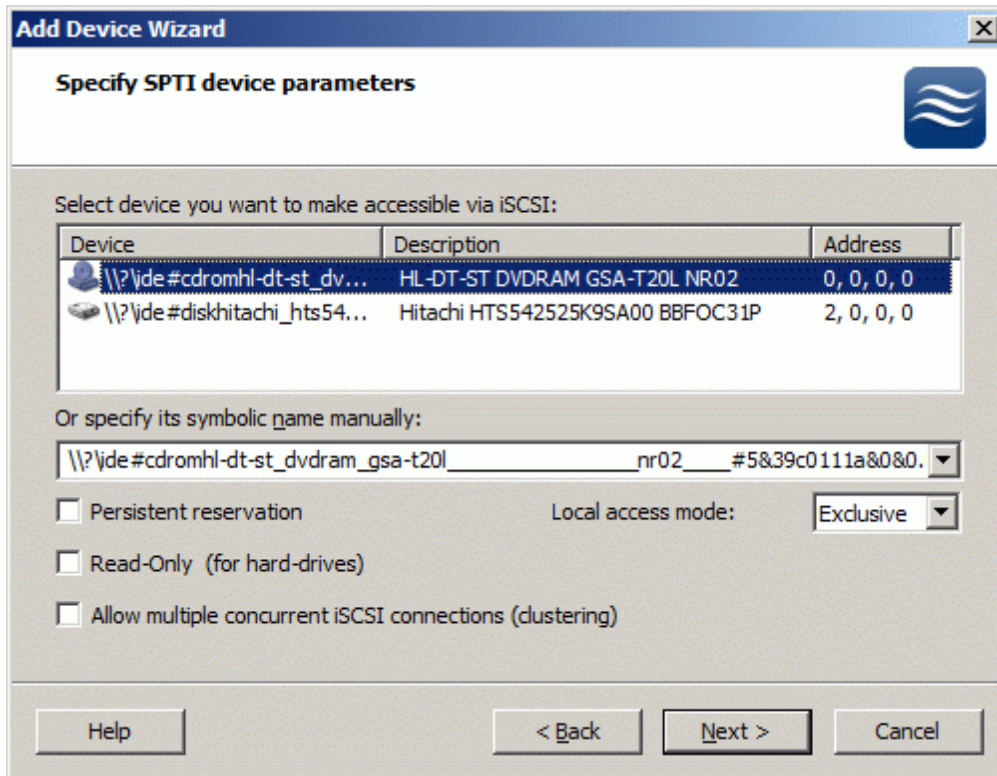
Select the **Add Device...** menu item to continue.

In the Add Device Wizard that appears, select **SPTI device**. A brief description of each option is displayed in the right area of the wizard window and context sensitive help is also available by pressing the **Help** button.



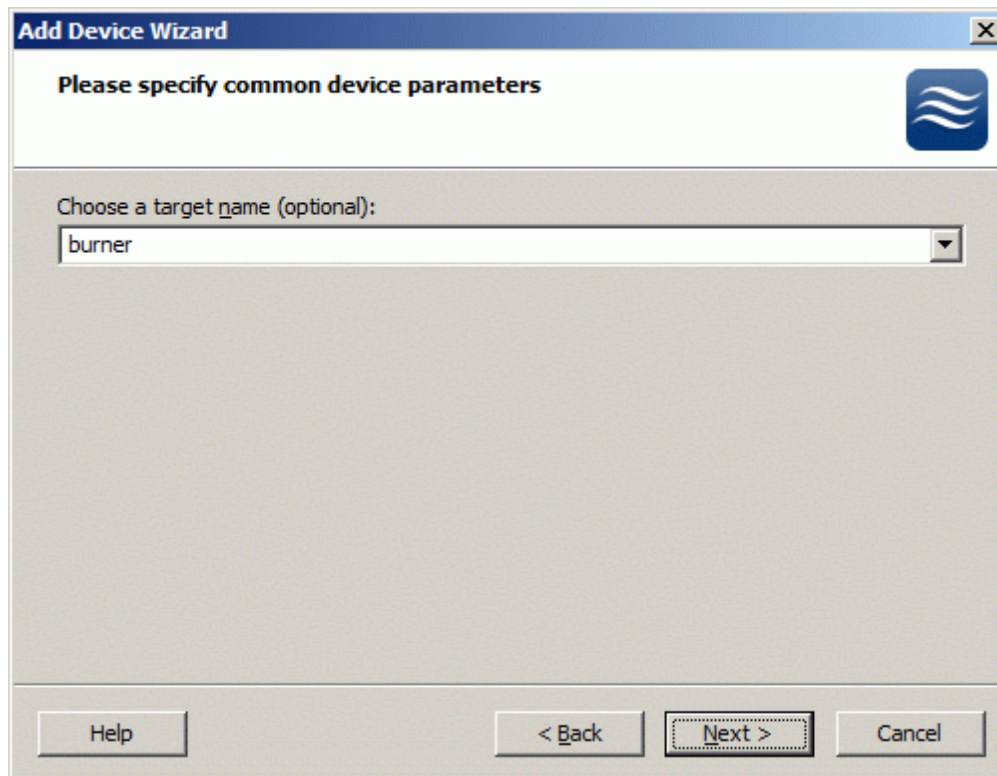
Press the **Next** button to continue.

All devices compatible with the SPTI device are shown. Select the dievice you want to make accessible via iSCSI. Refer to the online help for details regarding the additional parameters.



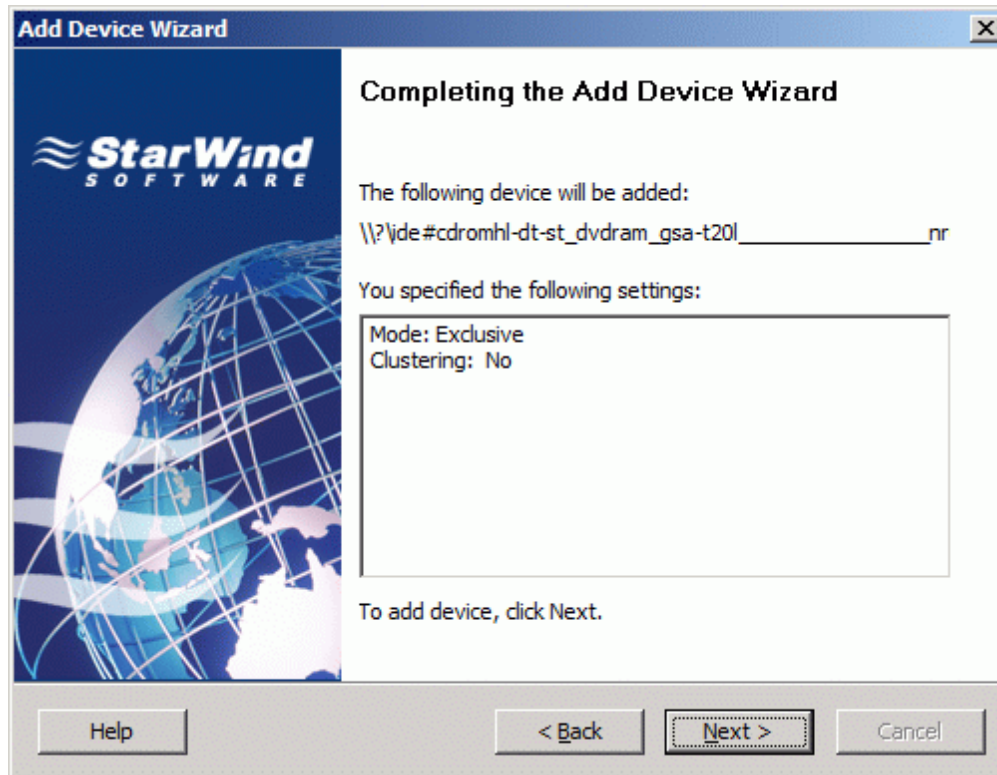
Press the **Next** button to continue.

Select an optional target name. The name must be a unique name by which the device will be declared to the iSCSI initiators connecting to StarWind over an IP network. It is also best practise to name the devices using recognisable sequences such as 'host machine name'. 'type of device'. 'name of device'.



Press the **Next** button to continue.

Check if all of the device parameters are correct. Press the **Back** button if any changes are required.



Press the **Next** button to continue.

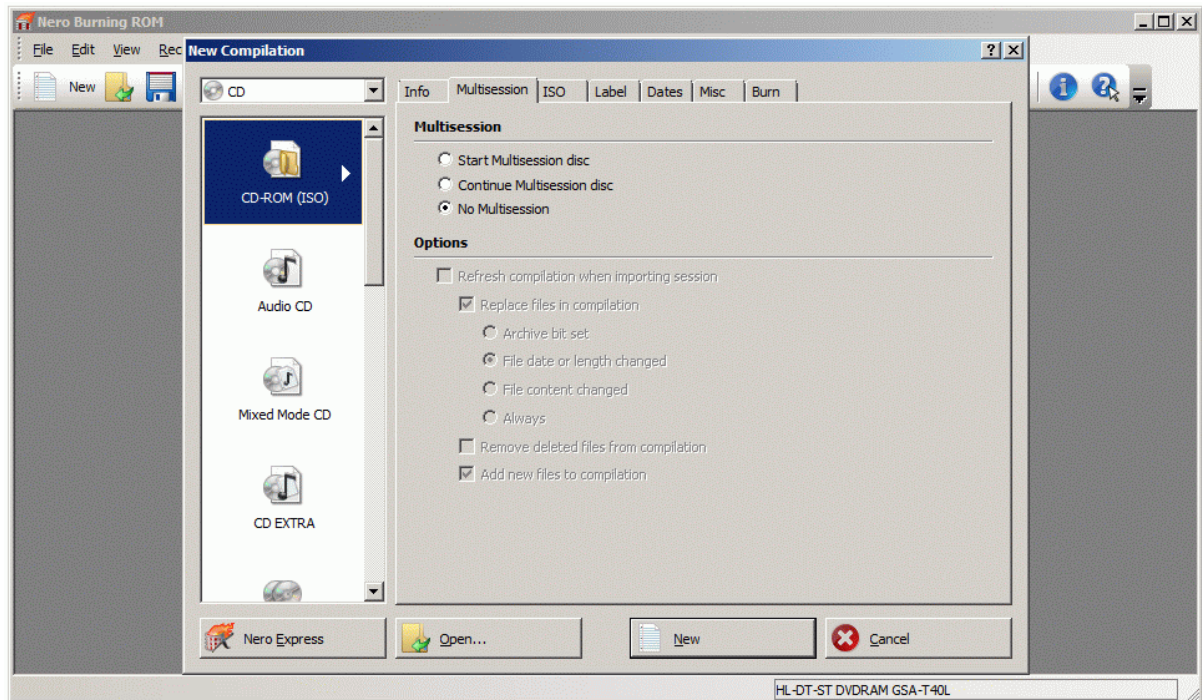
The information about the recently created device is displayed on the last wizard page (see image below)



Press the **Finish** button to close the wizard.

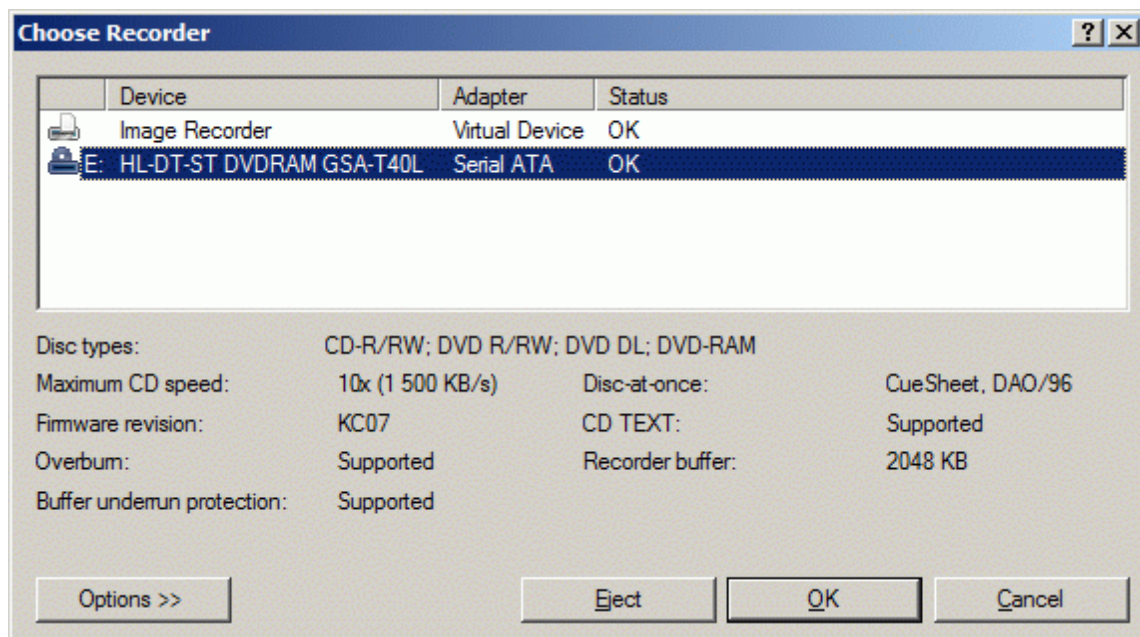
View the List of Available Burners in Nero

Launch Nero by selecting **Start -> All Programs -> Nero 8 -> Nero Burning ROM**.



Select **Choose Recorder** item from **Recorder** menu to view available burners.

Choose Recorder dialog appears.



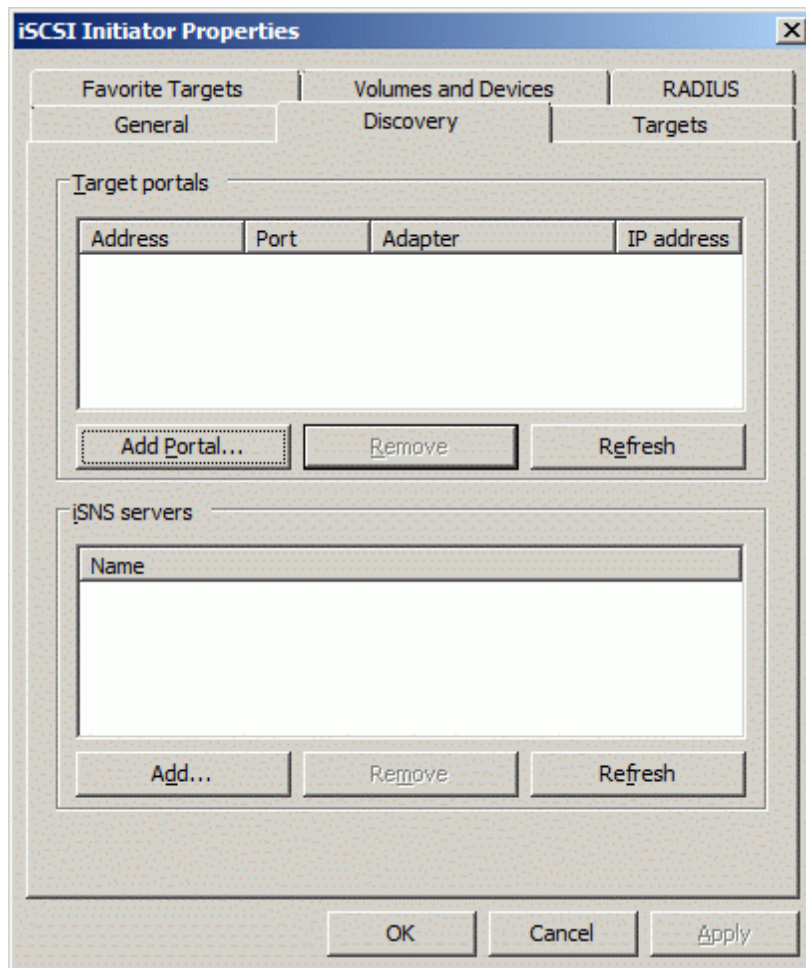
From the image you can see that we have one burner attached. Let's connect another one and burn data disc with it.

Connecting Target Using MS iSCSI Initiator

Launch the Microsoft iSCSI Software Initiator application

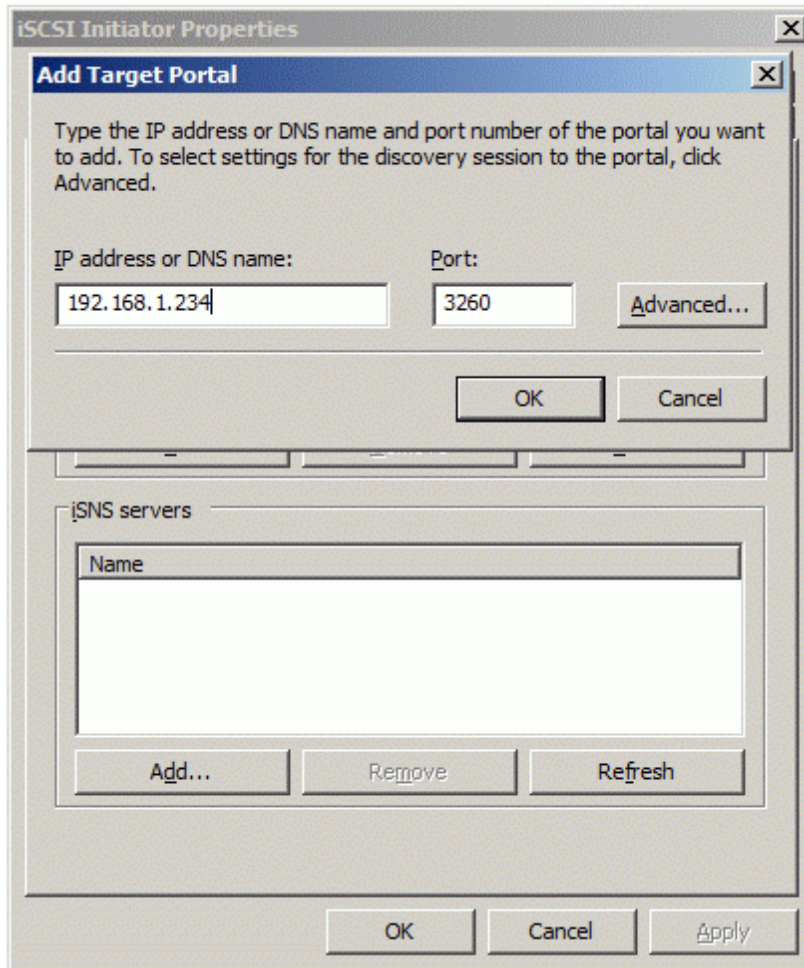
Start -> All Programs -> Microsoft iSCSI Initiator -> Microsoft iSCSI Initiator.

Switch to the Discovery tab.



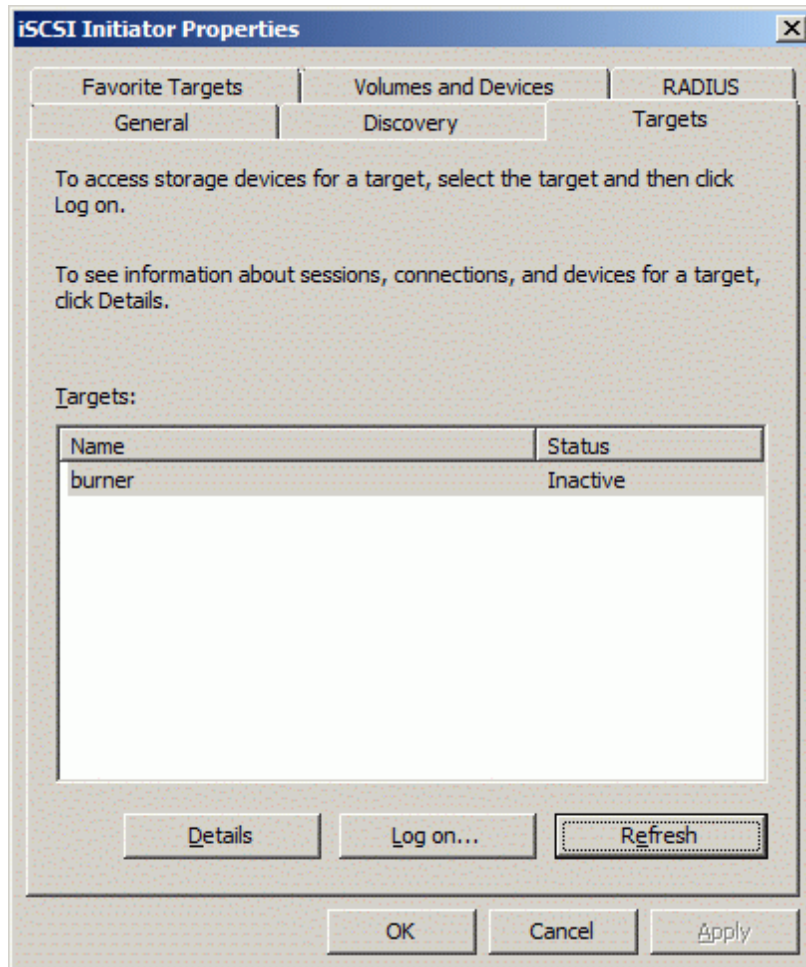
Click **Add Portal...** in the Target Portals group.

In the 'Add Target Portal' dialog, type in the **IP address** of the computer with **StarWind** installed and port number assigned to **StarWind** (default : 3260).



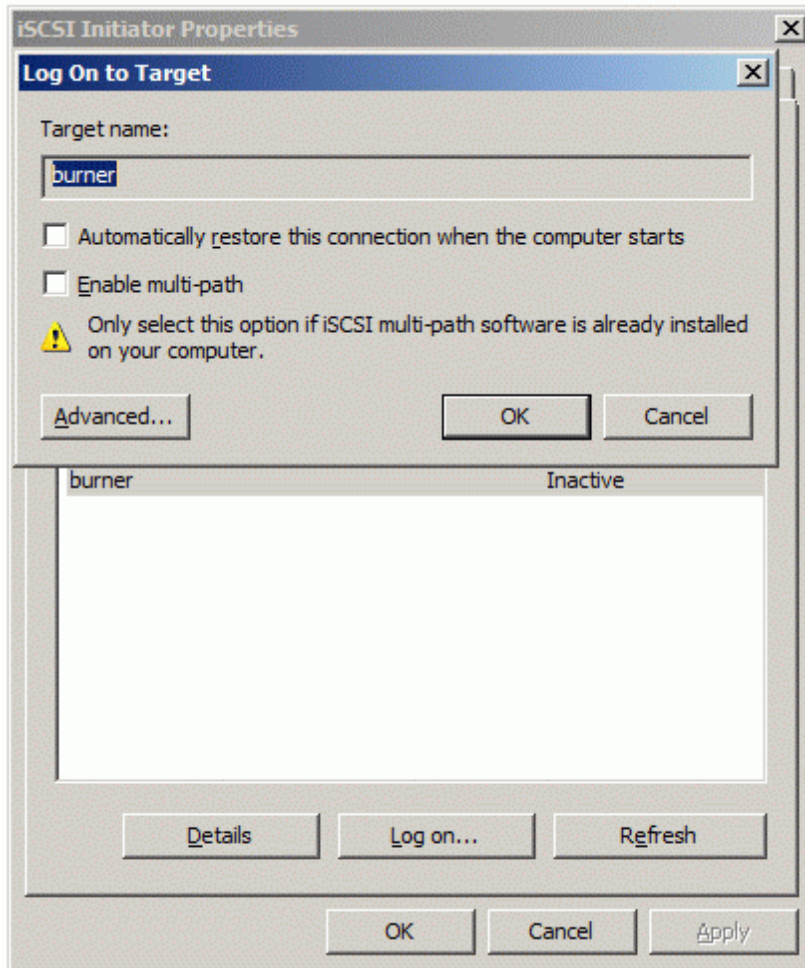
Press the **OK** button to continue.

Switch to the Targets tab. Select the target name from the list (if no targets are listed, press the Refresh button).



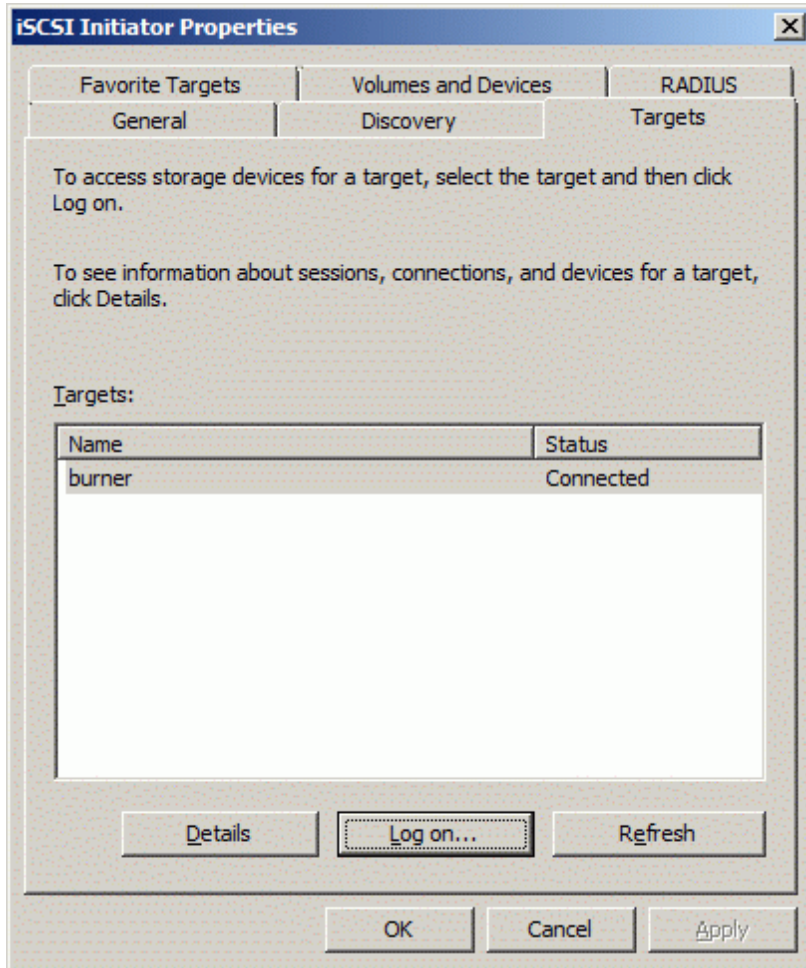
Press the **Log On...** button.

In the 'Log On to Target' dialog, optionally you can enable the 'Automatically restore this connection when the system boots' checkbox.



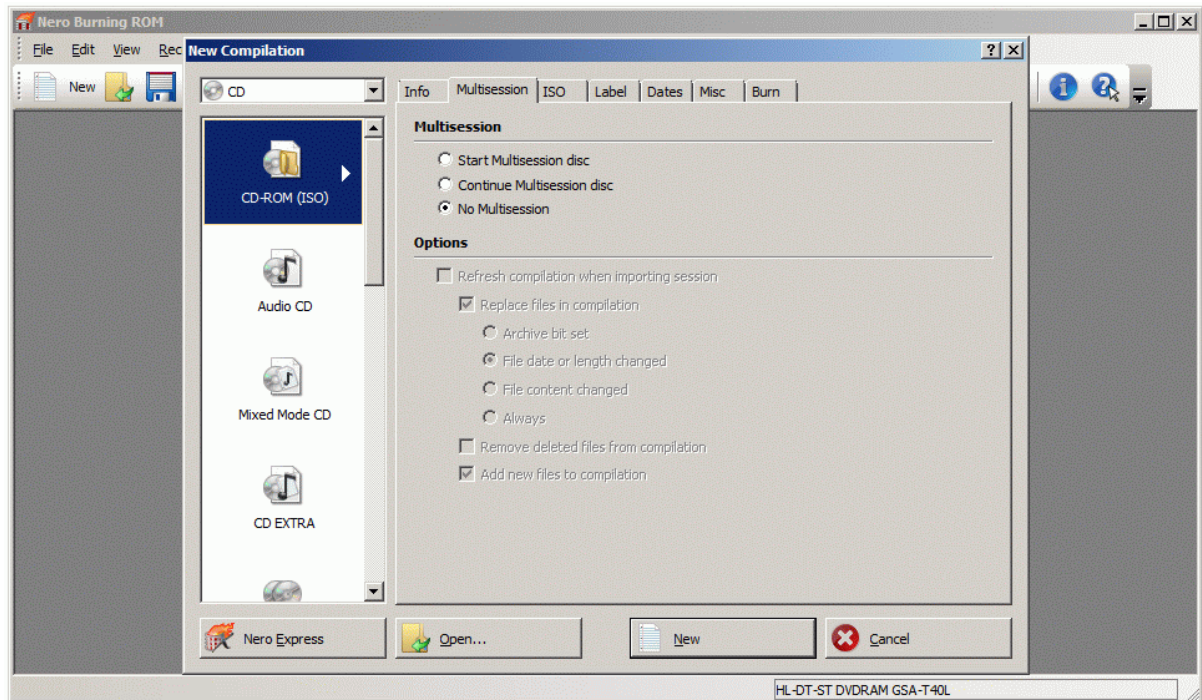
Press the **OK** button to continue.

If the logon is successful, the iSCSI device will show as 'Connected'. It may take a few seconds for the device to appear in Windows.

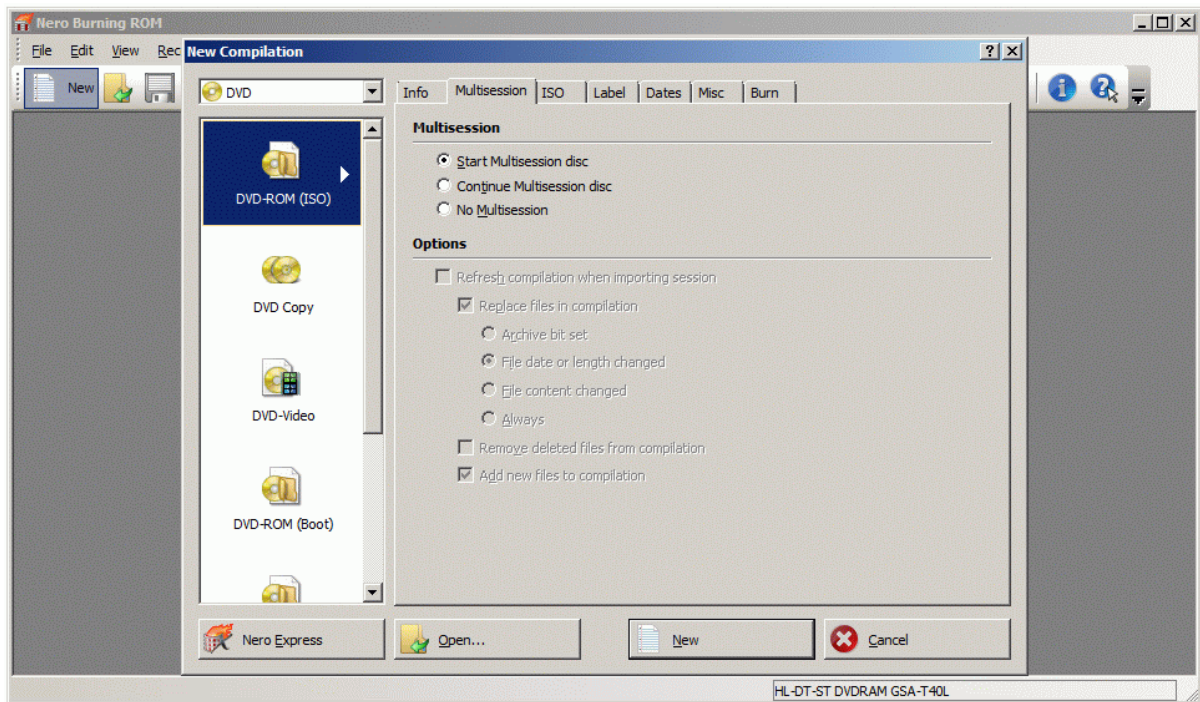


Burning a Disc in Nero

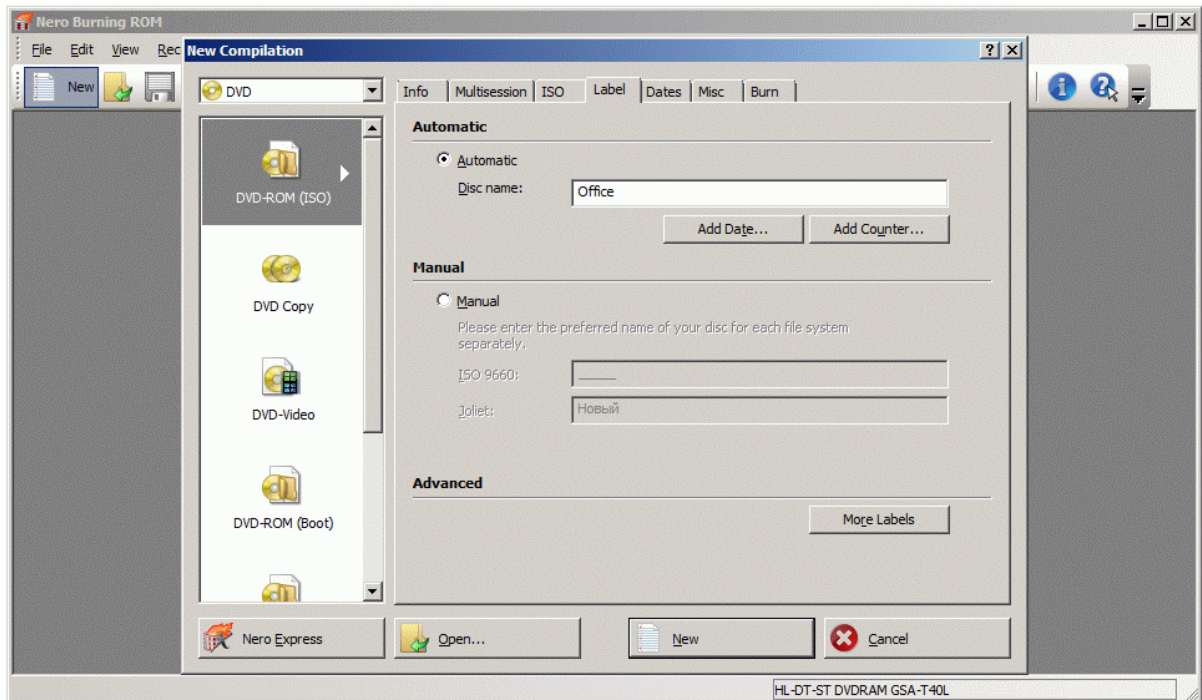
Launch **Nero** by selecting **Start -> All Programs -> Nero 8 -> Nero Burning ROM**.



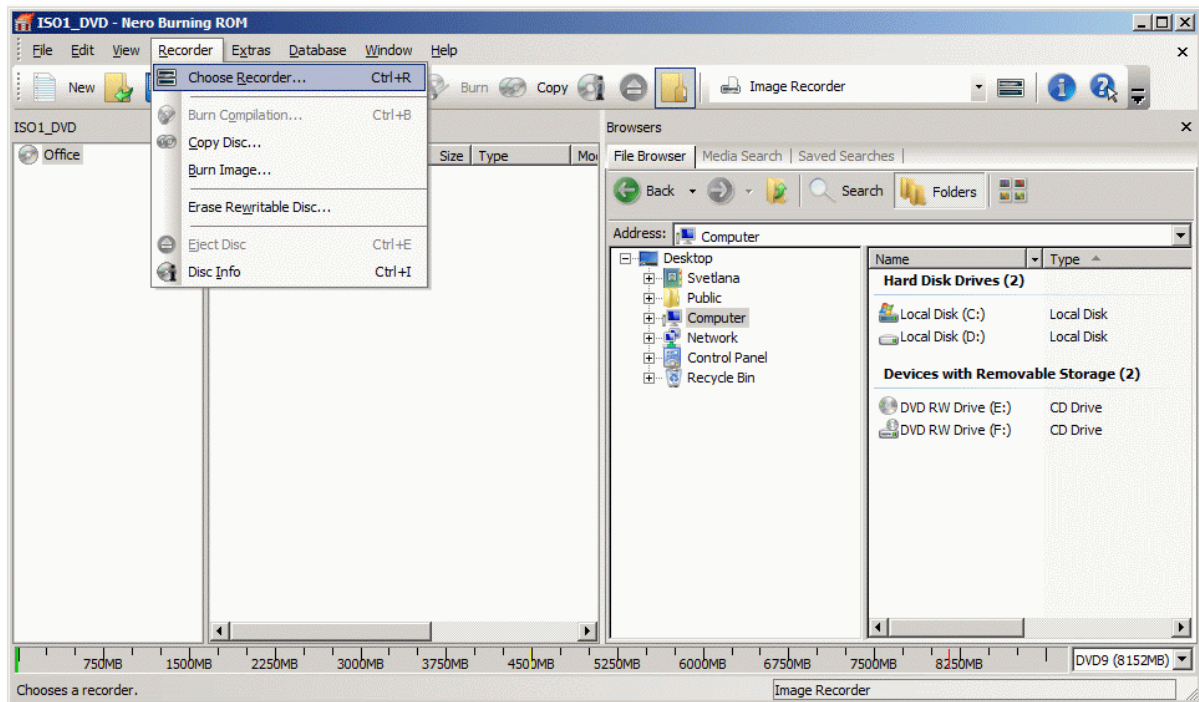
Select the type of media (CD/DVD) for burning. Set up the required options on the Multisession tab.



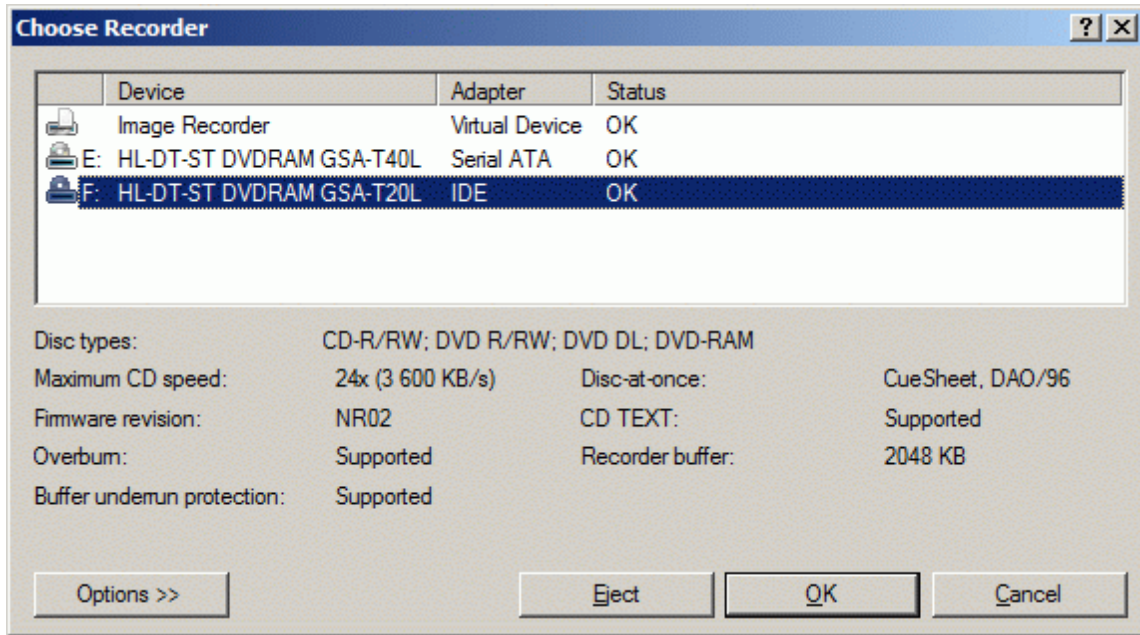
Switch to the Label tab and set an optional Disk name



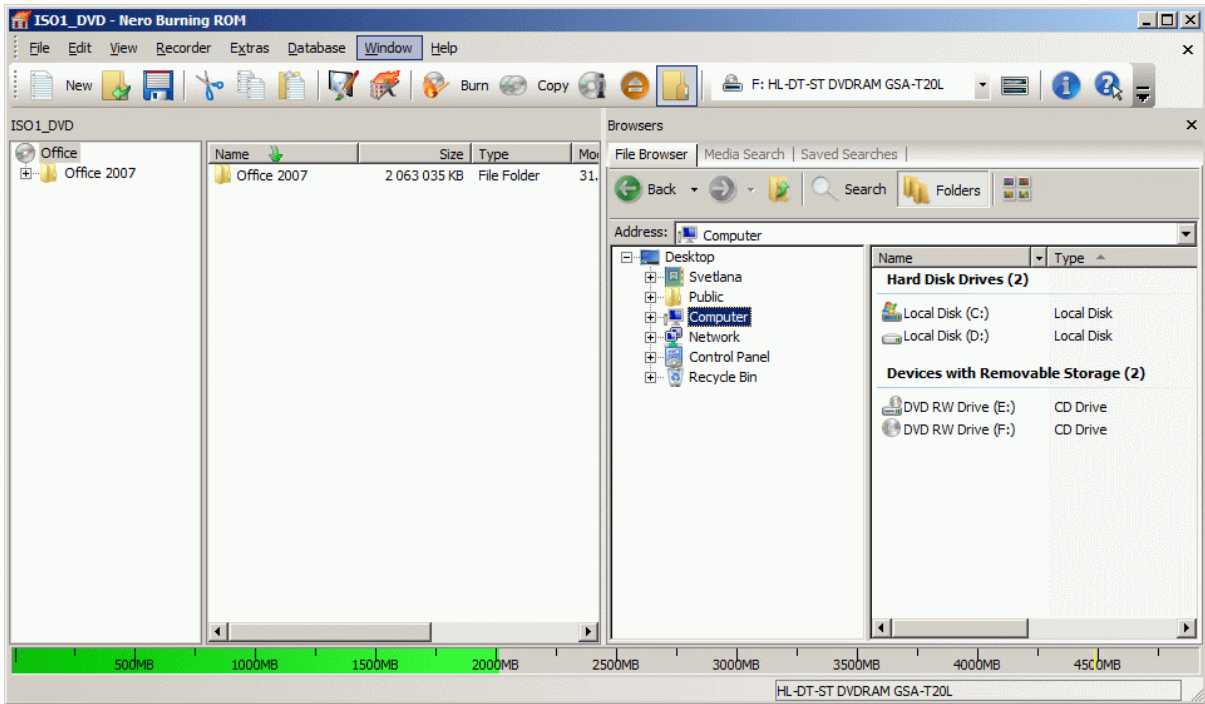
Select **Choose Recorder** item from **Recorder** menu.



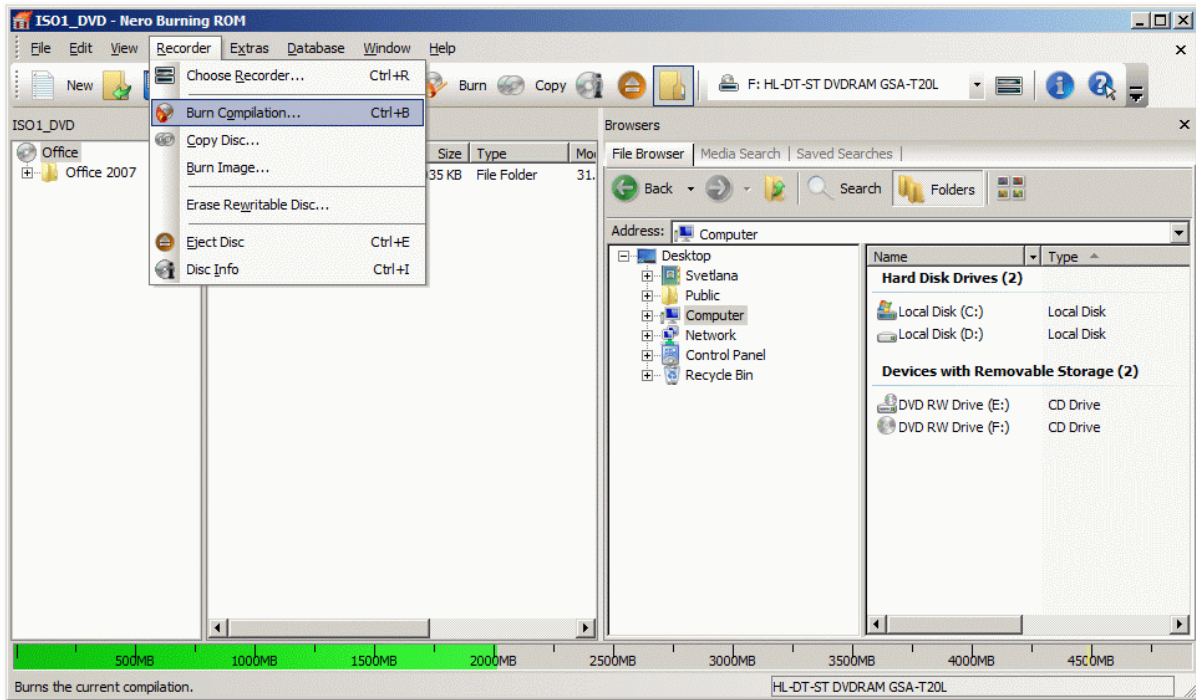
Select the CD/DVD device which is exported using StarWind.



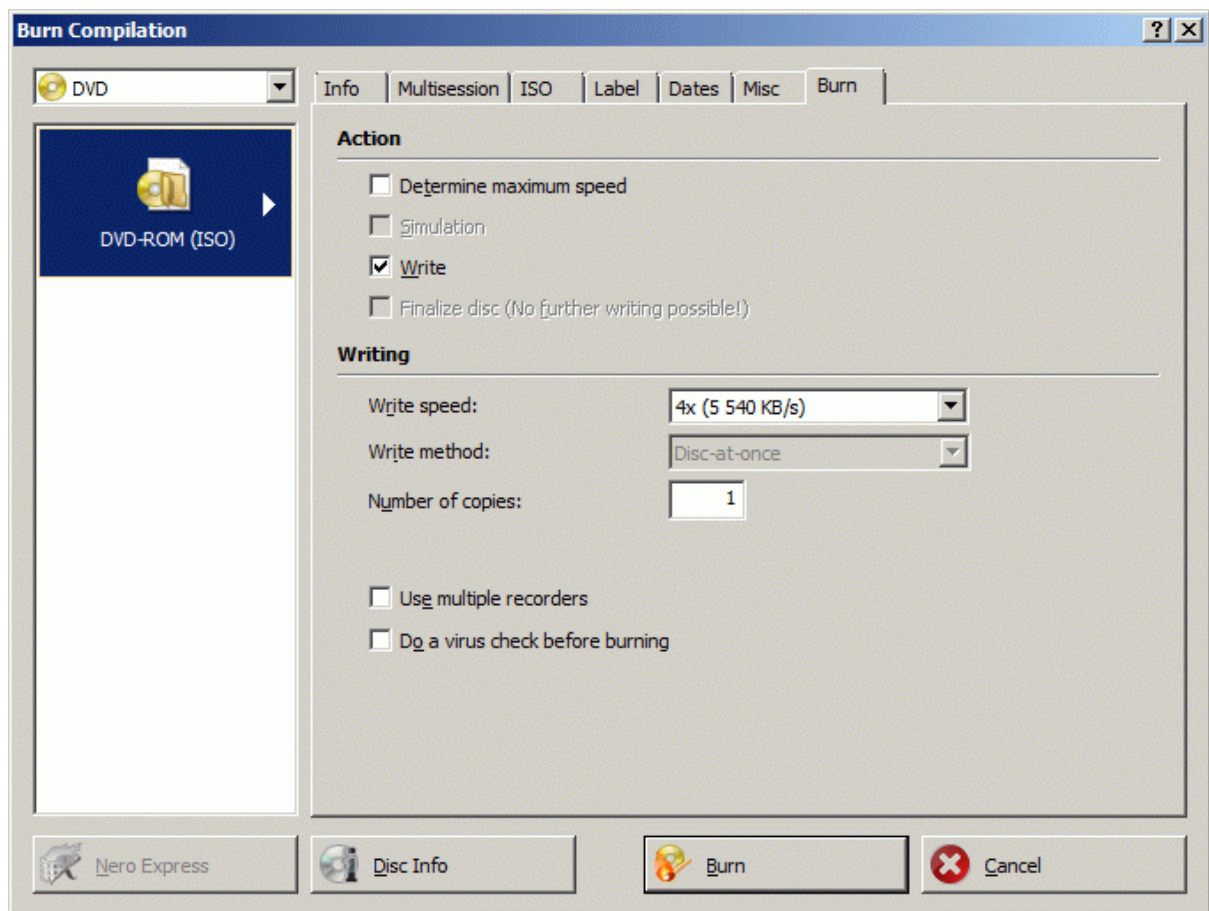
Add the folders and files you want to write to the disc.



Select the **Burn Compilation** item from the **Recorder** menu.

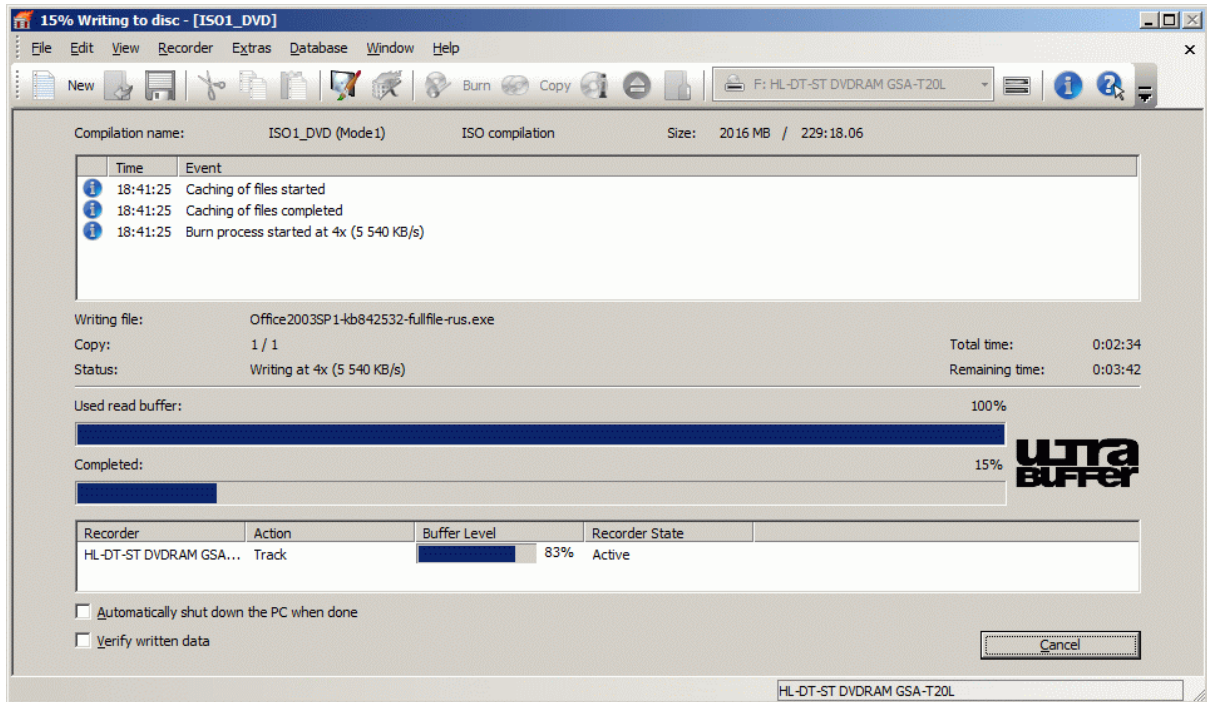


Burn Compilation dialog appears.

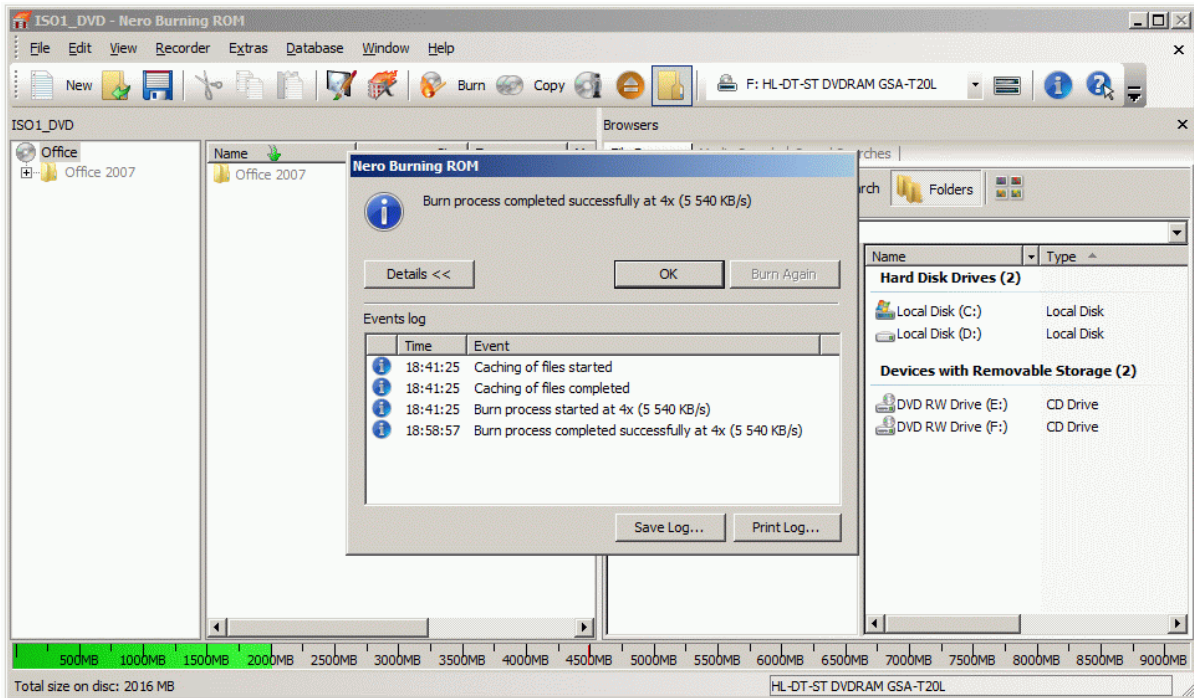


Click the **Burn** button to start burning.

The burning process is in the progress.



When the burning is finished click **OK**

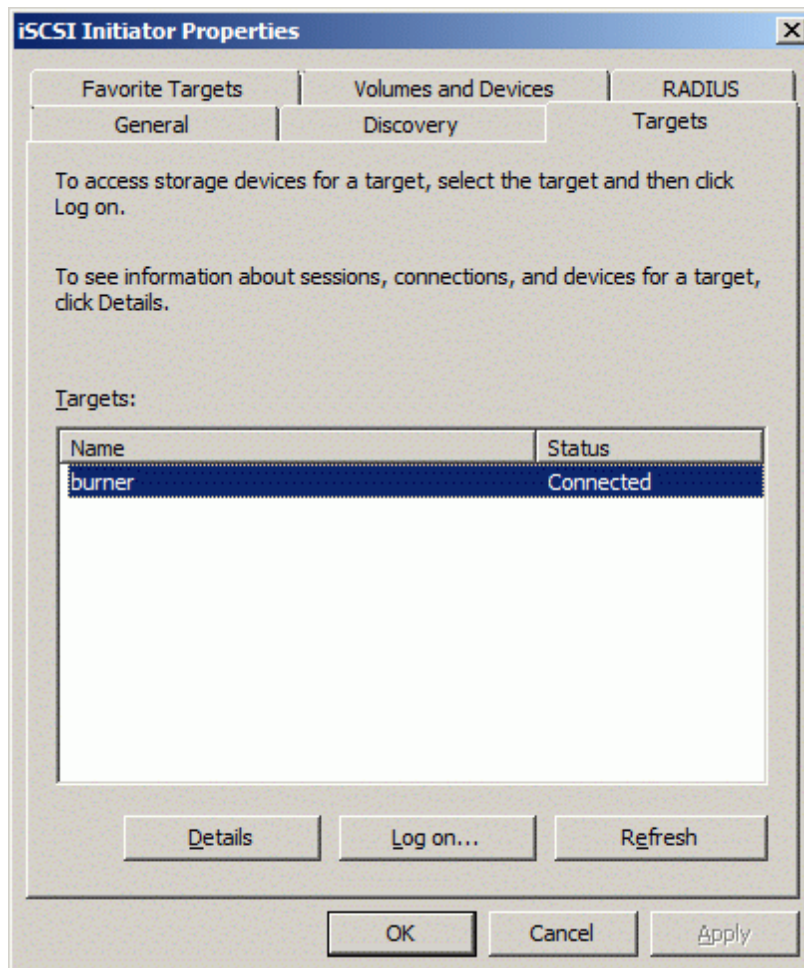


Disconnecting Target in MS iSCSI Initiator

Launch the Microsoft iSCSI Software Initiator application

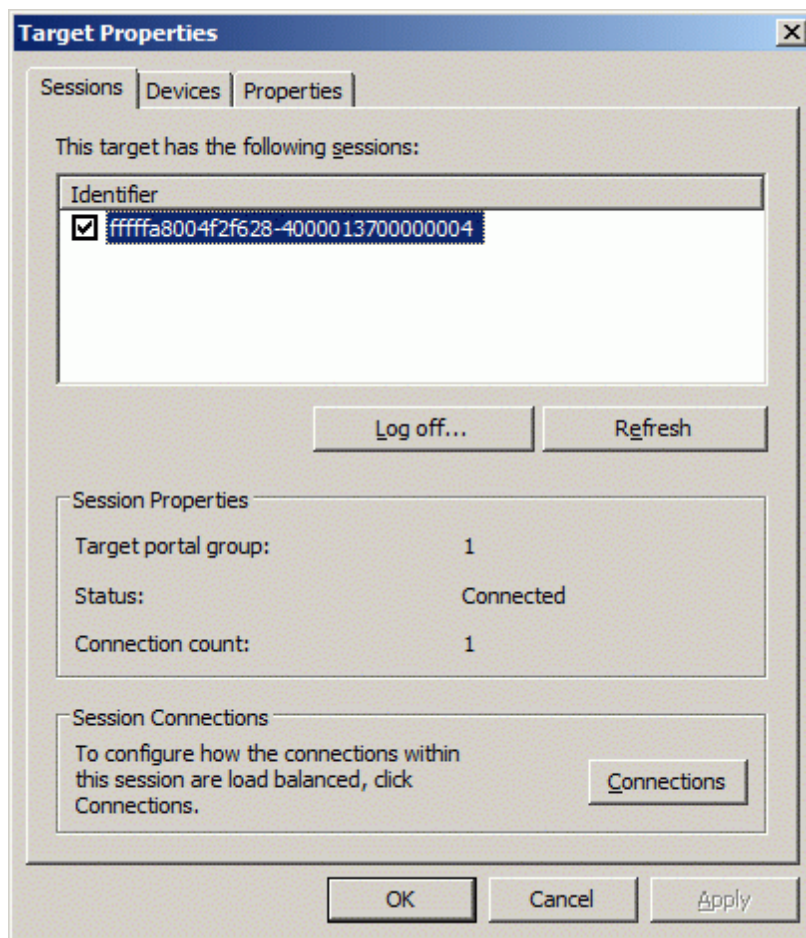
Start -> All Programs -> Microsoft iSCSI Initiator -> Microsoft iSCSI Initiator.

Switch to the Targets tab. Select a target, which you wish to disconnect.



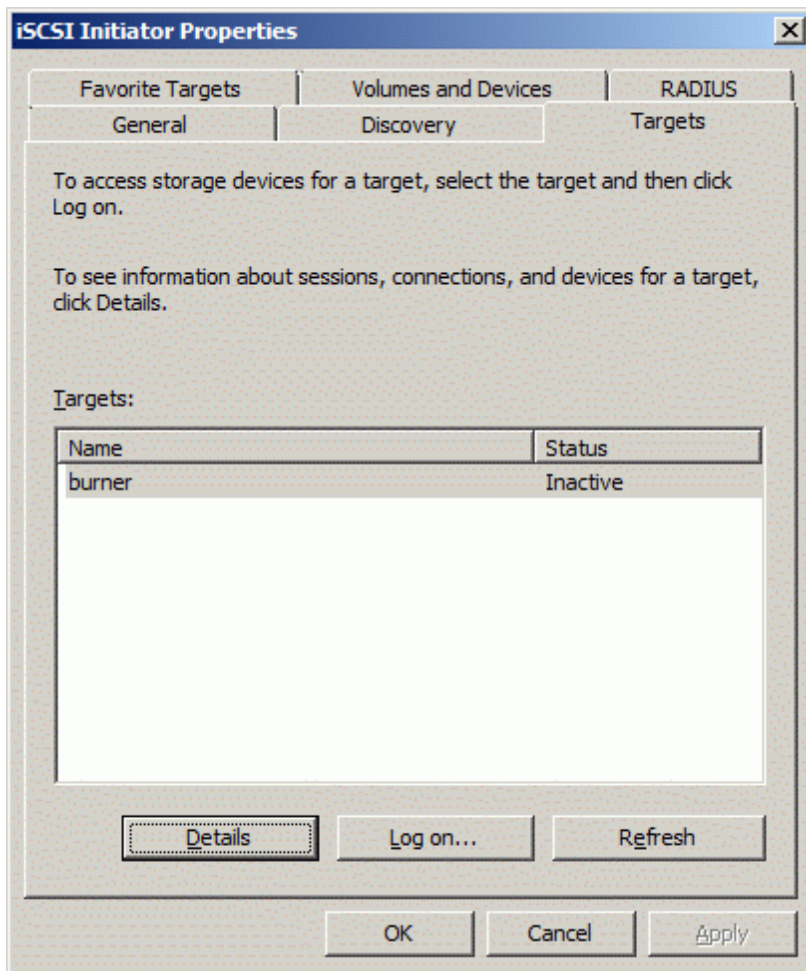
Press the **Details** button.

In the appearing dialog box mark Identifier and click **Log Off**.



Press the **Log off** button.

The target is disconnected now.



Conclusion

Contacts

Support: www.starwindsoftware.com/support

Support Forum: www.starwindsoftware.com/forums

Sales E-mail: sales@starwindsoftware.com

US Headquarters

Phone: 617-449-7717

Fax: 617-505-5845

EMEA: 1-888-532-2203

StarWind Software Inc.

40 Mall Rd., Burlington

MA 01803, USA

www.starwindsoftware.com