

StarWind iSCSI SAN Software: Implementing NIC Teaming on a StarWind server

www.starwindsoftware.com

Copyright © StarWind Software 2008-2011. All rights reserved.

COPYRIGHT

Copyright © StarWind Software 2008-2011. All rights reserved. No part of this publication may be reproduced, stored in a retrieval system, or transmitted in any form or by any means, electronic, mechanical, photocopying, recording or otherwise, without the prior written consent of StarWind Software.

TRADEMARKS

“StarWind”, “StarWind Software” and the StarWind and the StarWind Software logos are trademarks of StarWind Software which may be registered in some jurisdictions. All other trademarks are owned by their respective owners.

CHANGES

The material in this document is for information only and is subject to change without notice. While reasonable efforts have been made in the preparation of this document to assure its accuracy, StarWind Software assumes no liability resulting from errors or omissions in this document, or from the use of the information contained herein. StarWind Software reserves the right to make changes in the product design without reservation and without notification to its users.

TECHNICAL SUPPORT AND SERVICES

If you have questions about installing or using this software, check this and other documents first - you will find answers to most of your questions here or there. If you need further assistance, please contact us.

Table of Contents

Introduction.....	4
Installing Drivers.....	5
Creating NIC team.....	6
Configuring network connection	13
Conclusion.....	14

Guide

Introduction

NIC Teaming is a hardware ensuring solution which makes your server tolerant for any hardware faults such as adapter fault, switch fault etc. You can also use Link Aggregation Team modes to provide higher throughput between server and the network. Implementing NIC Teaming solutions on a StarWind Server can prevent you from possible data loss and crashes due to network instability.

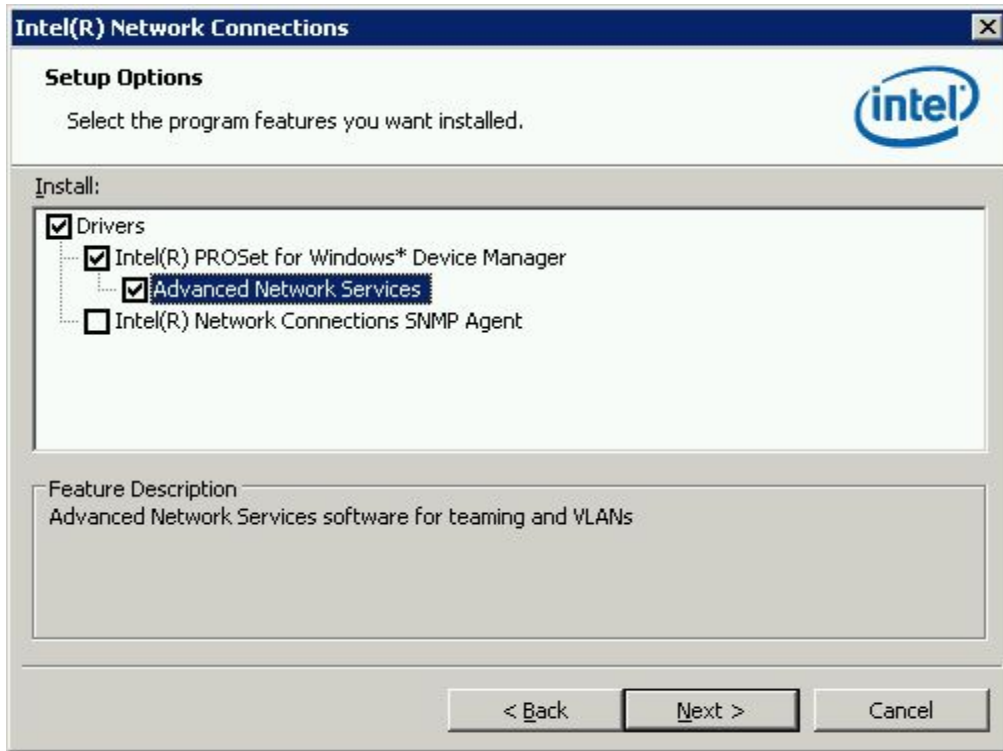
The reference configuration is using 2 Intel PRO 1000MT Server Network Adapters

The document is showing **common steps** to configure NIC teaming, the installation and configuration process may vary depending on the hardware and software configuration you use.

Installing Drivers

Download the latest Advanced Driver pack (Including PROSet and ANS) from NIC manufacturer web site.

During setup ensure to install PROSet and ANS features.



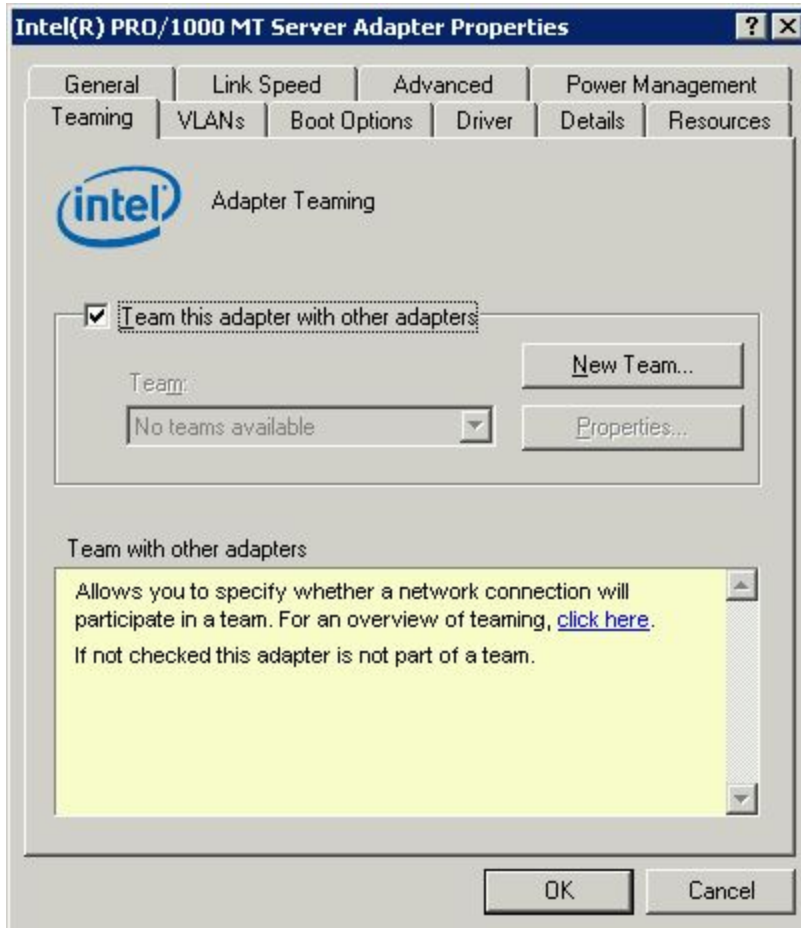
Creating NIC team

Open the Device Manager (Right click My Computer->Manage->Device manager)



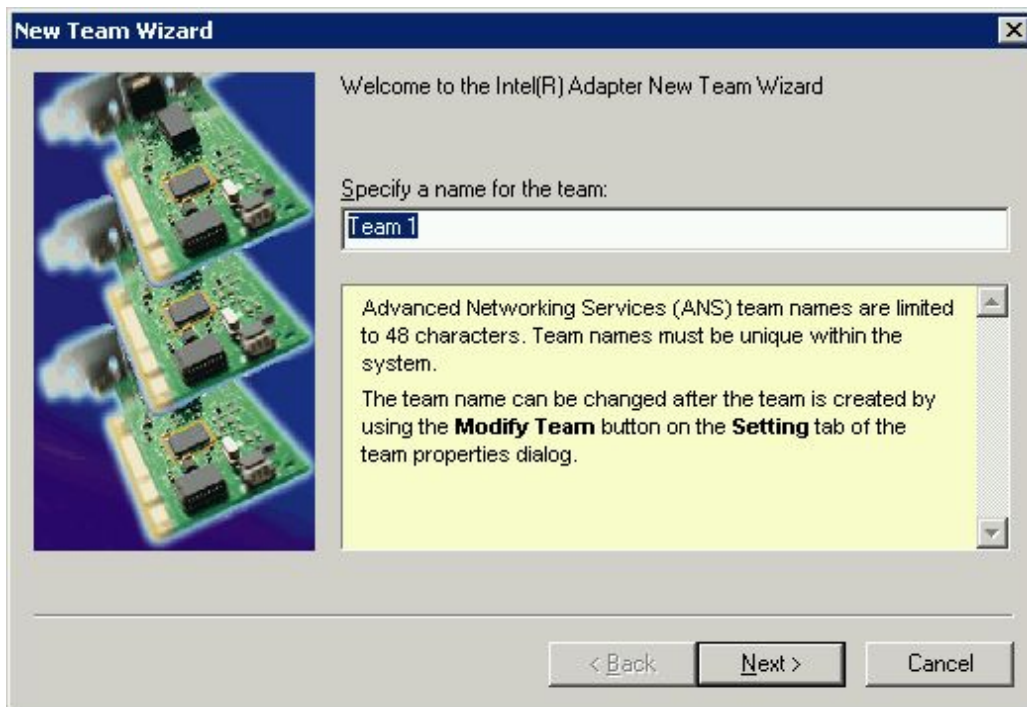
Right click on the one of the adapters you want to bind in a team and select **Properties** in the pop up menu.

Adapter properties window will appear. Go to the **Teaming** Tab.
Enable "Team this adapter with other adapters" checkbox.



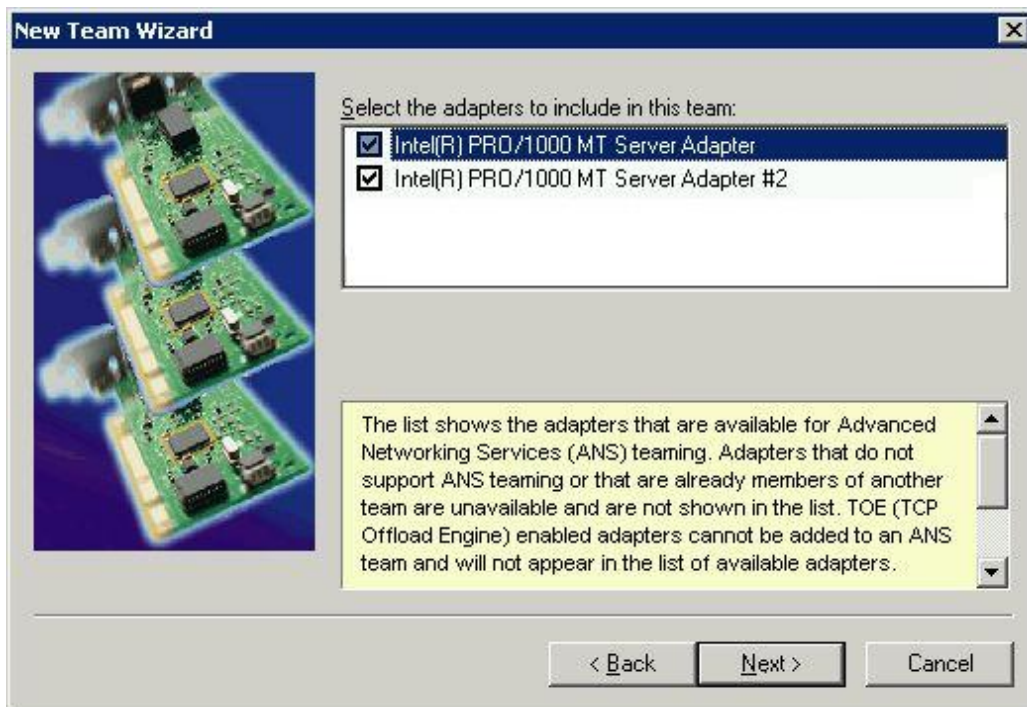
Press the **New Team...** button.

Enter a name for your team.



Press the **Next** button to proceed.

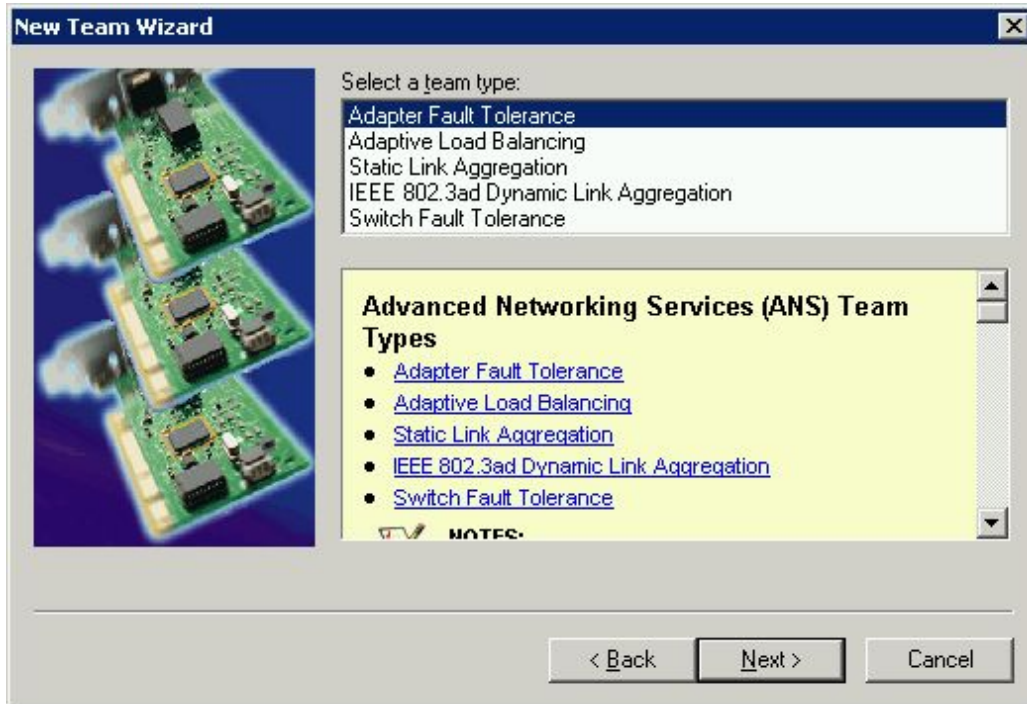
Select adapters you want to team.



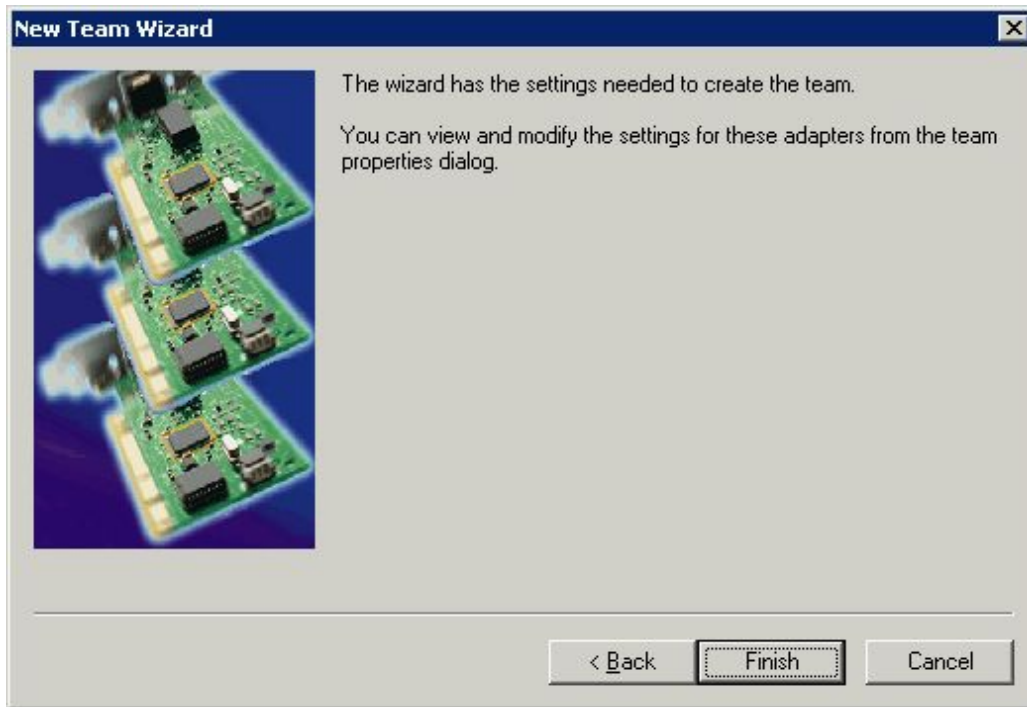
Press the **Next** button.

Select team type you want to create.

Lower right window part contains a brief description for every team type.



Press the **Next** button.



*Note, if you have selected Static Link Aggregation team all adapters must run at the same speed and must be connected to a Static Link Aggregation capable Switch.

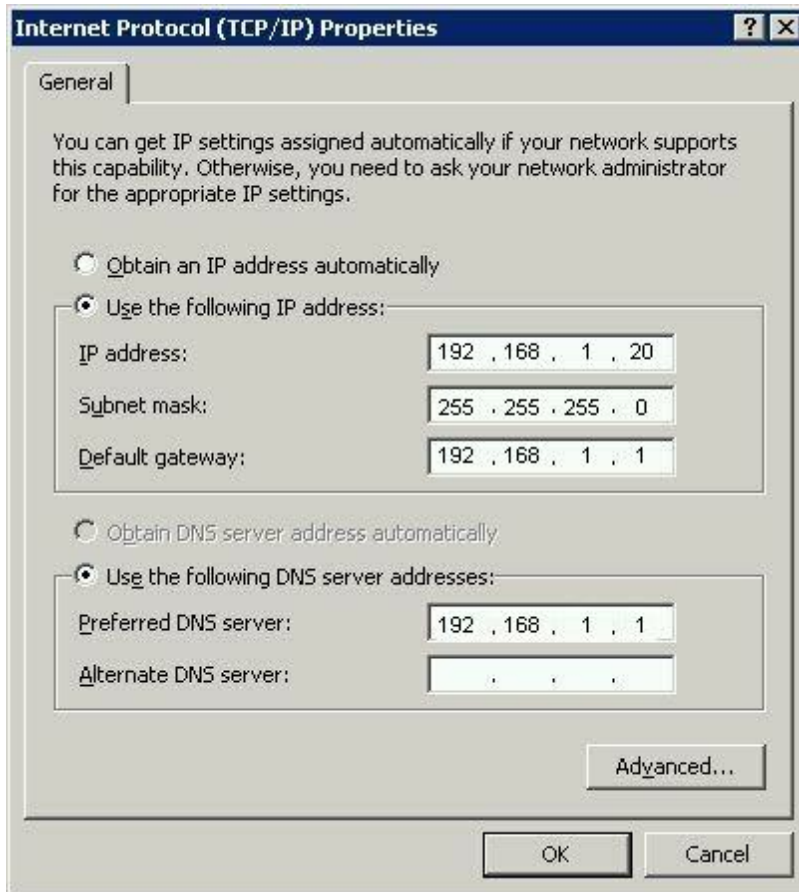
Press the **Finish** button.

Now your system recognizes Teamed NICs as a separate network adapter.



Configuring network connection

The teamed network connection is specified as a separate. Open the connections TCP/IP Properties window and type in your IP address, Subnet Mask, Gateway and DNS server.



Conclusion

To use NIC teaming feature you will have to specify teamed connection's IP address in the MS Initiator when connecting the targets.
Creating and adding targets to the StarWind server procedure remains the same.

Contacts

Support: www.starwindsoftware.com/support

Support Forum: www.starwindsoftware.com/forums

Sales E-mail: sales@starwindsoftware.com

US Headquarters

Direct phone number: 1-617-449-7717

Fax: 1-617-507-5845

EMEA, APAC

Direct phone numbers: +44-0-2071936727

+44-0-2071936350

Voice Mail: 1-866-790-2646

StarWind Software Inc.

40 Mall Rd., Burlington

MA 01803, USA

www.starwindsoftware.com