

StarPort iSCSI and ATA-over-Ethernet Initiator: Using as DVD-ROM Emulator



www.starwindsoftware.com

Copyright © StarWind Software 2008-2009. All rights reserved.

COPYRIGHT

Copyright © StarWind Software 2008-2009. All rights reserved. No part of this publication may be reproduced, stored in a retrieval system, or transmitted in any form or by any means, electronic, mechanical, photocopying, recording or otherwise, without the prior written consent of StarWind Software.

TRADEMARKS

“StarPort”, “StarWind Software” and the StarPort and the StarWind Software logos are trademarks of StarWind Software which may be registered in some jurisdictions. All other trademarks are owned by their respective owners.

CHANGES

The material in this document is for information only and is subject to change without notice. While reasonable efforts have been made in the preparation of this document to assure its accuracy, StarWind Software assumes no liability resulting from errors or omissions in this document, or from the use of the information contained herein. StarWind Software reserves the right to make changes in the product design without reservation and without notification to its users.

TECHNICAL SUPPORT AND SERVICES

If you have questions about installing or using this software, check this and other documents first - you will find answers to most of your questions here or there. If you need further assistance, please contact us.

Table of Contents

Introduction.....	4
Adding new device.....	5
Removing existing device.....	11

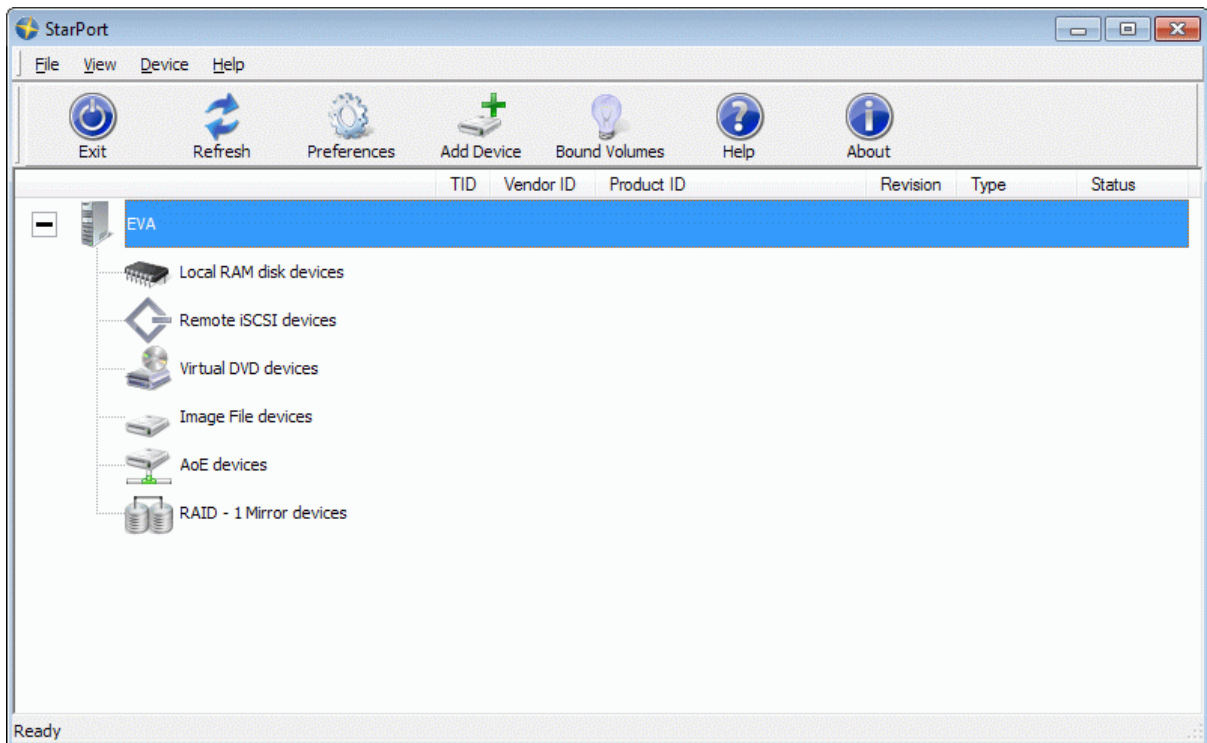
Guide

Introduction

StarPort not only fully implements iSCSI and ATA-over-Ethernet client side protocols enabling you to connect to remote storage appliances such as disk arrays, tape drives, DVD-ROM image libraries and so on, **StarPort** also creates a virtual DVD-ROM drive locally to watch movies in a home theatre extending your computing infrastructure. A virtual DVD-ROM emulation module enables as many ready to use optical drives as needed. Create an ISO or MDS image of your CD/DVD or Blu-Ray/HD-DVD drive with any disk grabbing utility and save it to your hard drive. Any time you need to read data or run applications from that image, mount it as a virtual DVD-ROM drive in **StarPort**. The image will appear as a new optical drive in your system which can be used it transparently as though it is a local DVD-ROM drive.

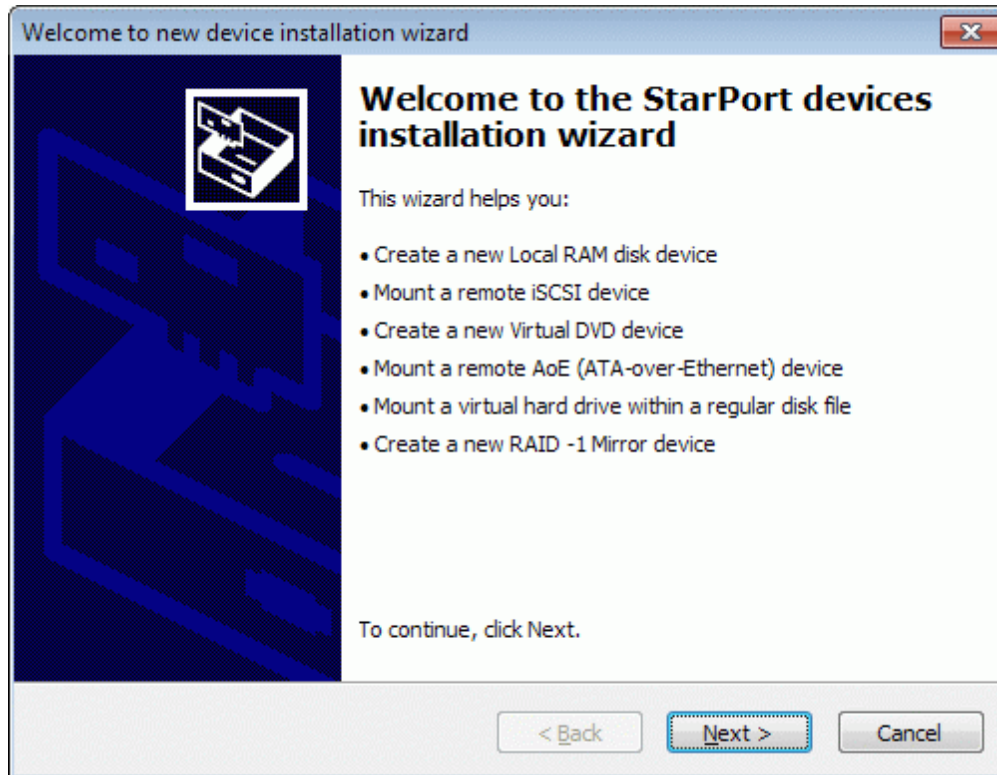
Adding new device

Launch the **StarPort** control application by selecting **Start->All Programs->StarWind Software->StarPort->StarPort**. After the program is started its icon appears in the system tray. Double click the icon with the left mouse button or single click it with the right mouse button and select **Start Management** item from the pop-up menu. You'll see a picture like the one below:



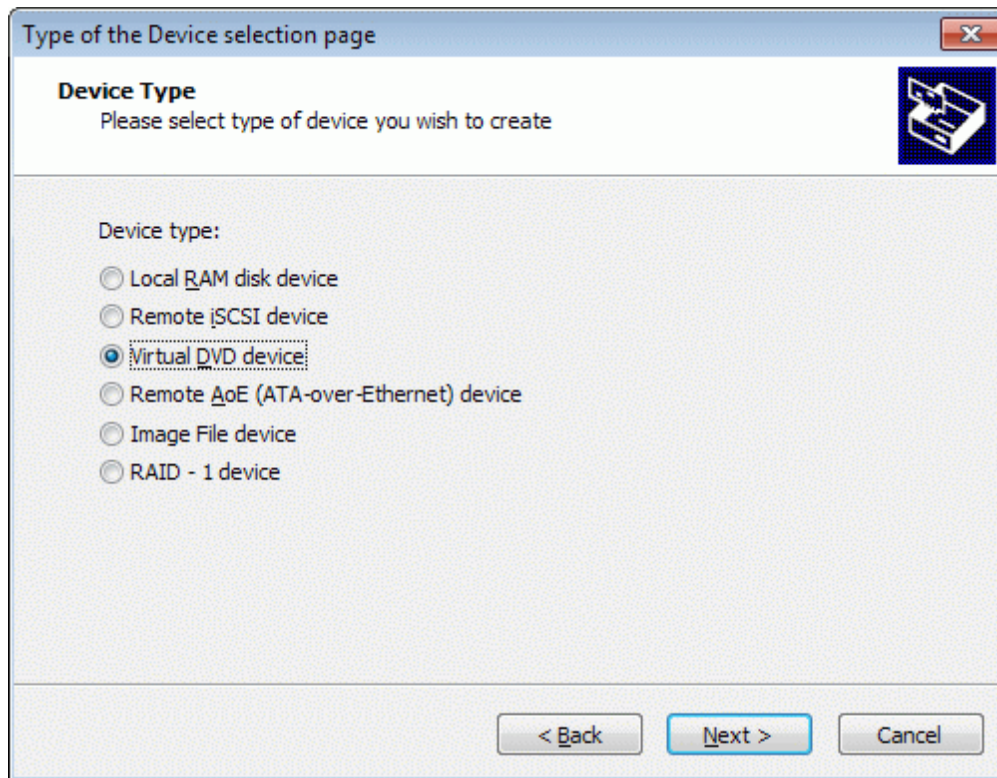
Select **Add Device** menu item from **Device** drop down menu or just press **Add Device** button on the application tray bar. New device installation wizard (see next page for the image) will appear.

On the first step of the **New Device Installation Wizard** please read the introduction instructions.



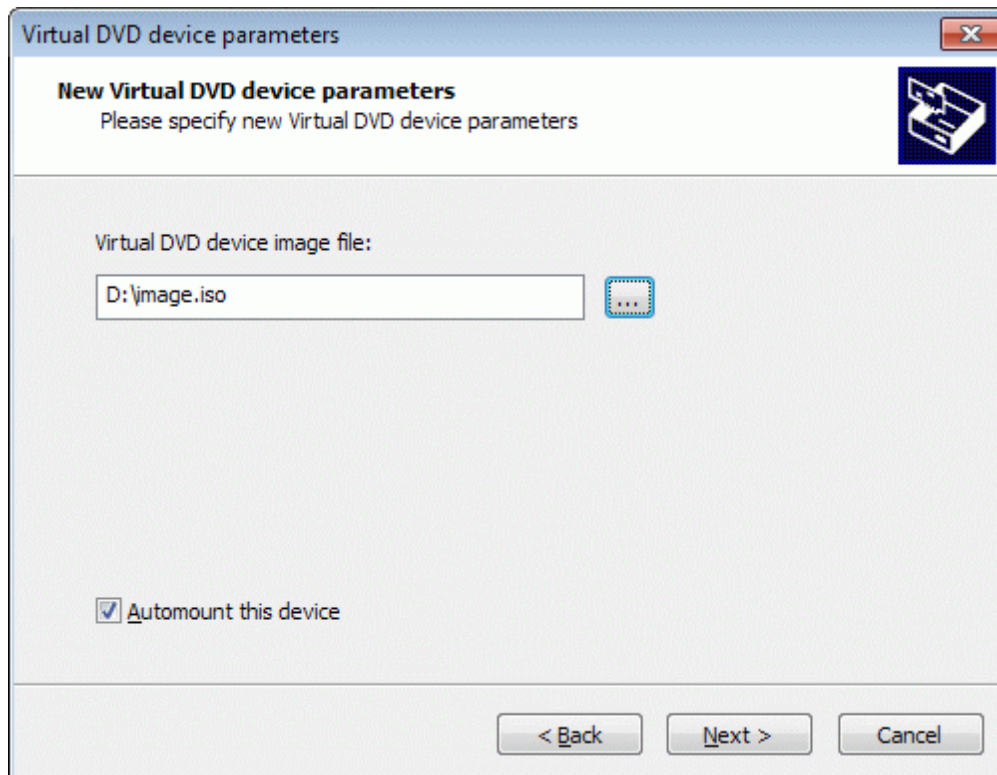
Press **Next** button to continue.

On the second step of the **New Device Installation Wizard** please select device type you wish to install. To mount a DVD or CD image into virtual DVD or CD drive select **Virtual DVD device**.



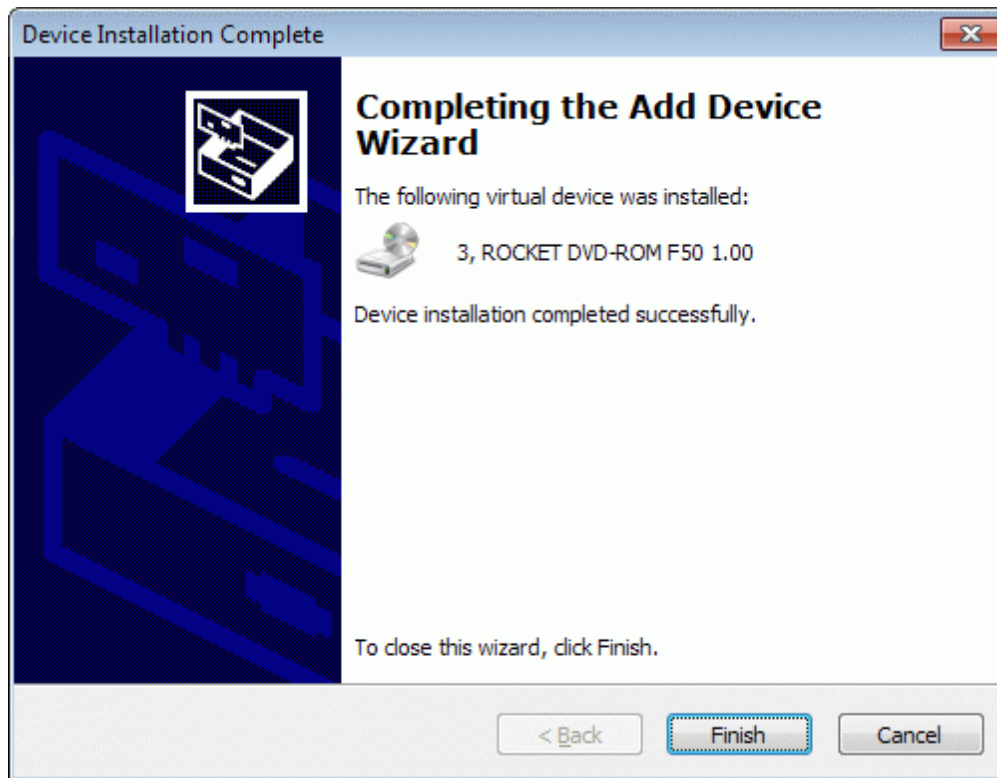
Press **Next** button to continue.

On the third step of the **New Device Installation Wizard** please specify ISO or MDS image location you wish to mount as a **Virtual DVD device**.
Select **Automount this device** if you wish created **Virtual DVD device** to be automatically re-created when you restart your PC. It means **Virtual DVD device** becomes available right after your PC boots and Windows starts.

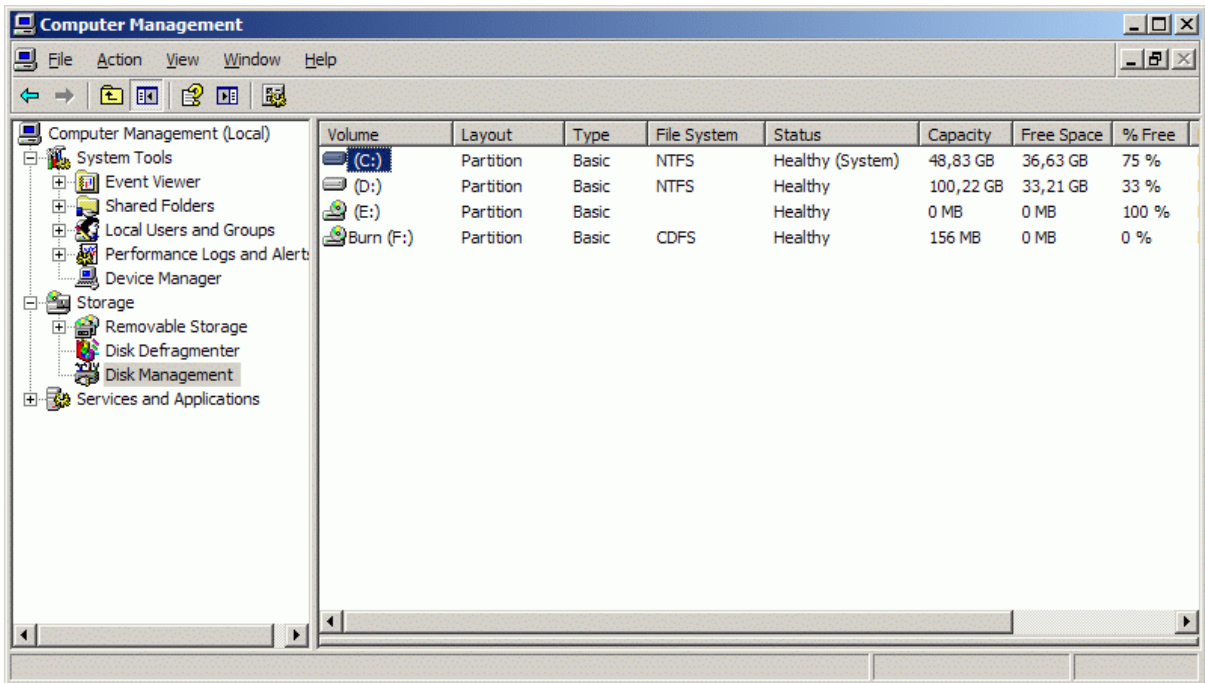
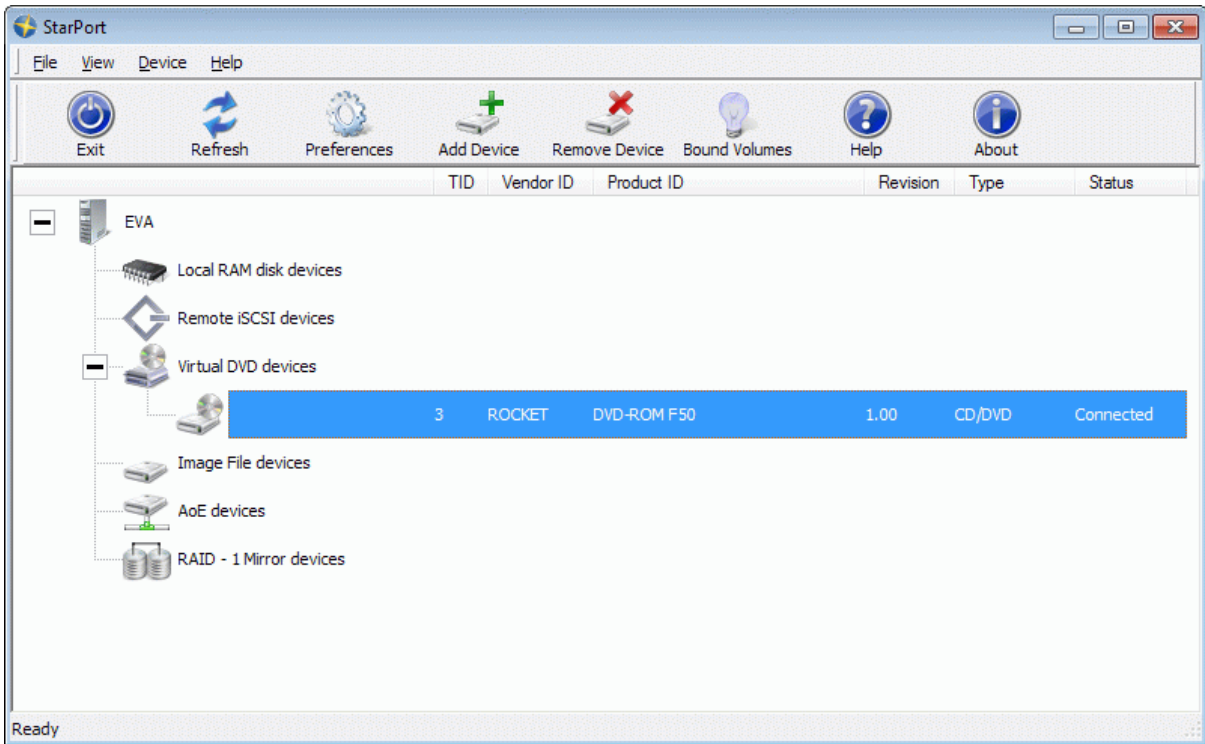


Press **Next** button to continue.

On the last step of the **New Device Installation Wizard** please confirm the installation results. If the new **Virtual DVD device** was installed correctly it should appear as a new optical disc volume in your system.

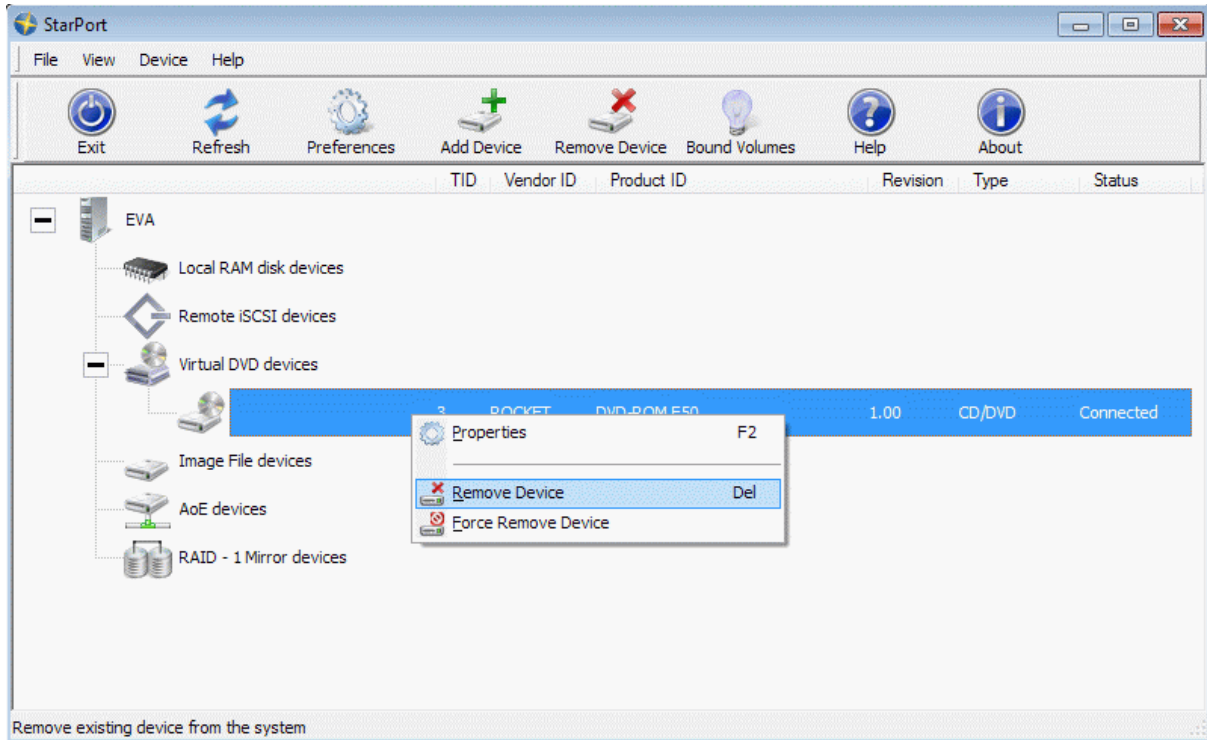


Press **Finish** button.



Removing existing device

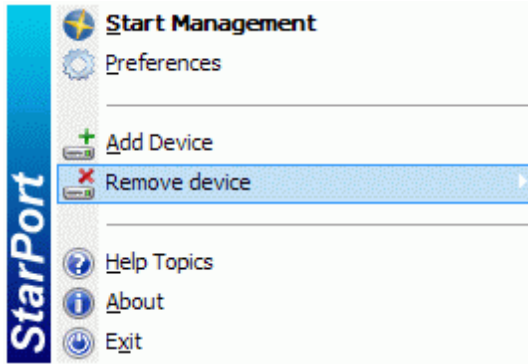
In the **StarPort** control application please select the device you wish to remove and click it with the right mouse button.



Select **Remove Device** menu item from the pop-up menu that appears.

Use the **Force Remove Device** if you cannot remove a device in a normal way (e.g. it is locked by some application or process). However it is not recommended to use the **Force Remove Device** feature as it may cause loss of the data and general system instability.

Alternatively you can remove a device in such a way: right click the **StarPort** icon in the system tray and find the device you wish to remove.



Contacts

Support: www.starwindsoftware.com/support

Support Forum: www.starwindsoftware.com/forums

Sales E-mail: sales@starwindsoftware.com

US Headquarters

Phone: 617-449-7717

Fax: 617-505-5845

EMEA: 1-888-532-2203

StarWind Software Inc.

40 Mall Rd., Burlington

MA 01803, USA

www.starwindsoftware.com