

StarPort iSCSI and ATA-over-Ethernet Initiator: Using as RAM Disk Emulator



www.starwindsoftware.com

Copyright © StarWind Software 2008-2009. All rights reserved.

COPYRIGHT

Copyright © StarWind Software 2008-2009. All rights reserved. No part of this publication may be reproduced, stored in a retrieval system, or transmitted in any form or by any means, electronic, mechanical, photocopying, recording or otherwise, without the prior written consent of StarWind Software.

TRADEMARKS

“StarPort”, “StarWind Software” and the StarPort and the StarWind Software logos are trademarks of StarWind Software which may be registered in some jurisdictions. All other trademarks are owned by their respective owners.

CHANGES

The material in this document is for information only and is subject to change without notice. While reasonable efforts have been made in the preparation of this document to assure its accuracy, StarWind Software assumes no liability resulting from errors or omissions in this document, or from the use of the information contained herein. StarWind Software reserves the right to make changes in the product design without reservation and without notification to its users.

TECHNICAL SUPPORT AND SERVICES

If you have questions about installing or using this software, check this and other documents first - you will find answers to most of your questions here or there. If you need further assistance, please contact us.

Table of Contents

Introduction.....	4
Adding new device.....	5
Removing existing device.....	11

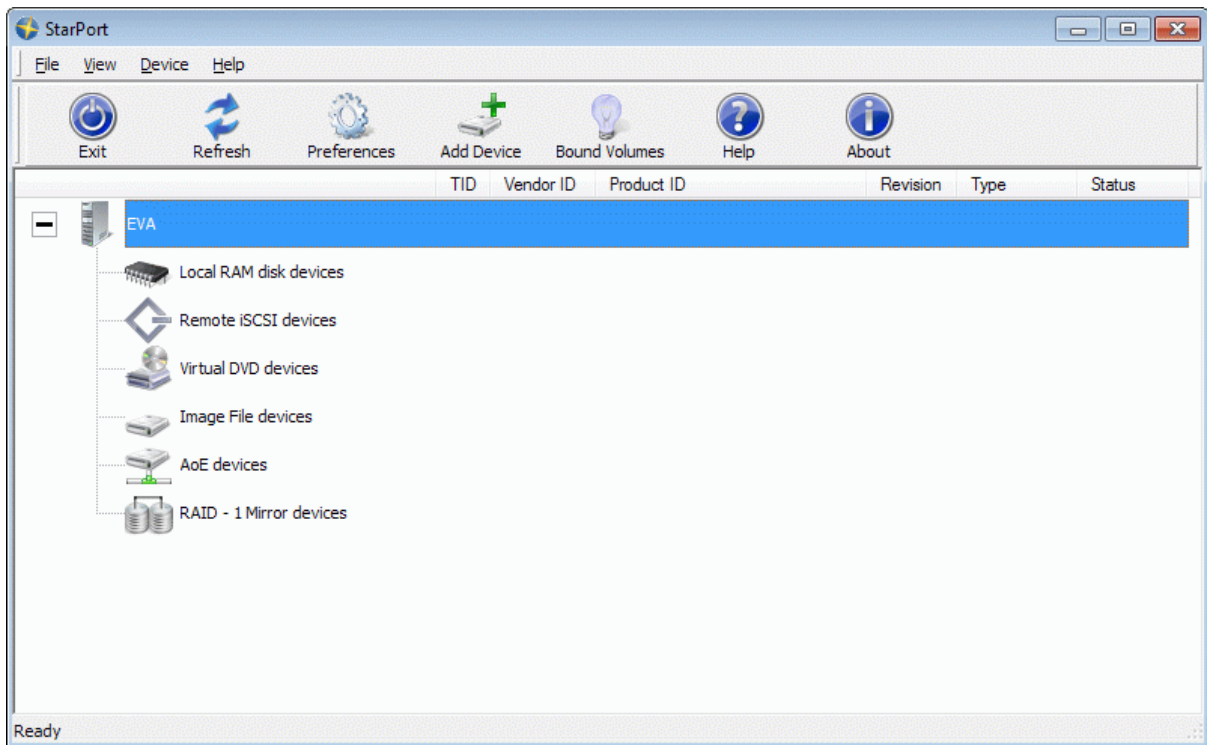
Guide

Introduction

StarPort not only fully implements iSCSI and ATA-over-Ethernet client side protocols enabling you to connect to remote storage appliances such as disk arrays, tape drives, DVD-ROM image libraries and so on, **StarPort** also creates a virtual RAM disk drives. Unsatisfied with the speed of disk I/O operations? Need a fast drive to store Internet Explorer cache files? Use **StarPort** RAM drive emulation which is more than 1000 times faster than your local hard drive. A RAM drive appears to your system and applications as a standard disk volume where you can read and write files. No longer limited to the hard drives speed, the **StarPort** RAM drive feature provides amazingly faster speed.

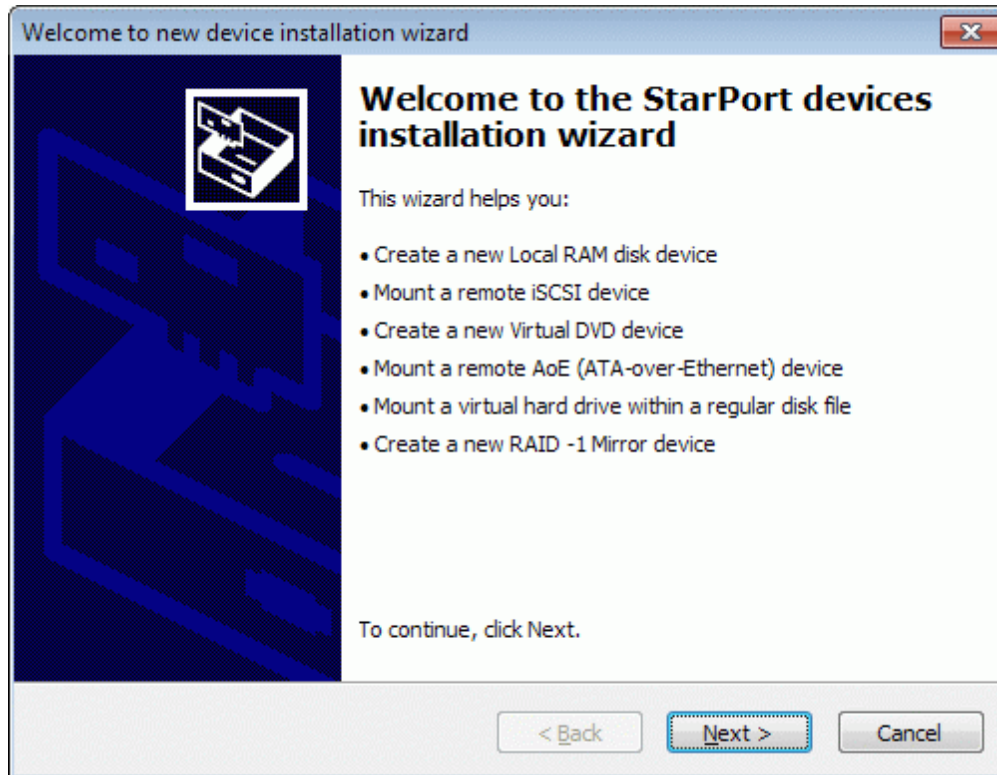
Adding new device

Launch the **StarPort** control application by selecting **Start->All Programs->StarWind Software->StarPort->StarPort**. After the program is started its icon appears in the system tray. Double click the icon with the left mouse button or single click it with the right mouse button and select **Start Management** item from the pop-up menu. You'll see a picture like the one below:



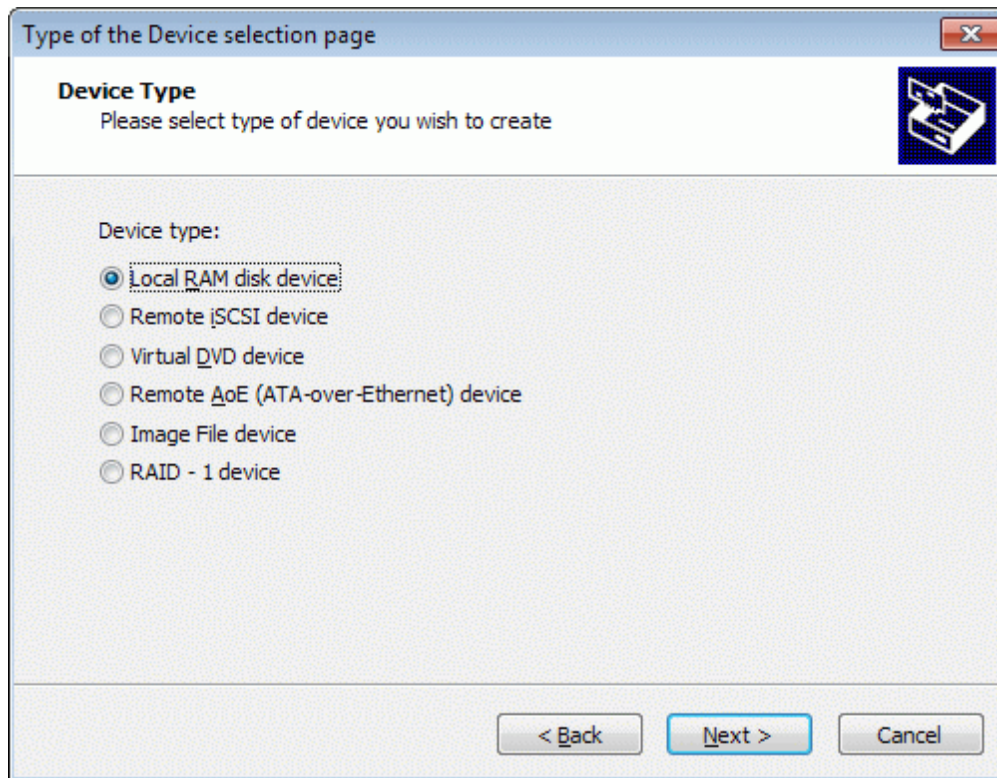
Select **Add Device** menu item from **Device** drop down menu or just press **Add Device** button on the application tray bar. New device installation wizard (see next page for the image) will appear.

On the first step of the **New Device Installation Wizard** please read the introduction instructions.



Press **Next** button to continue.

On the second step of the **New Device Installation Wizard** select device type you wish to install. To add a **Local RAM disk device** select **Local RAM disk device**.



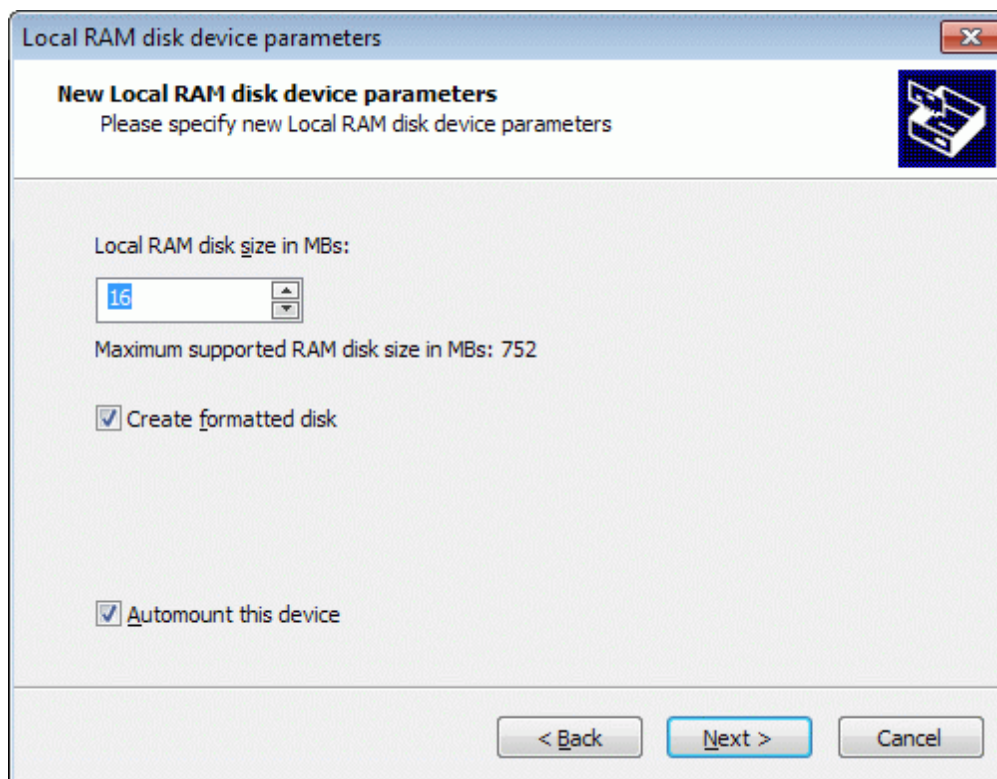
Press **Next** button to continue.

On the third step of the **New Device Installation Wizard** please specify the parameters of the **Local RAM disk** device you have selected to add:

Local RAM disk size in MBs is exact size of the disk you wish to add (disk size should fit into amount of free memory your PC has).

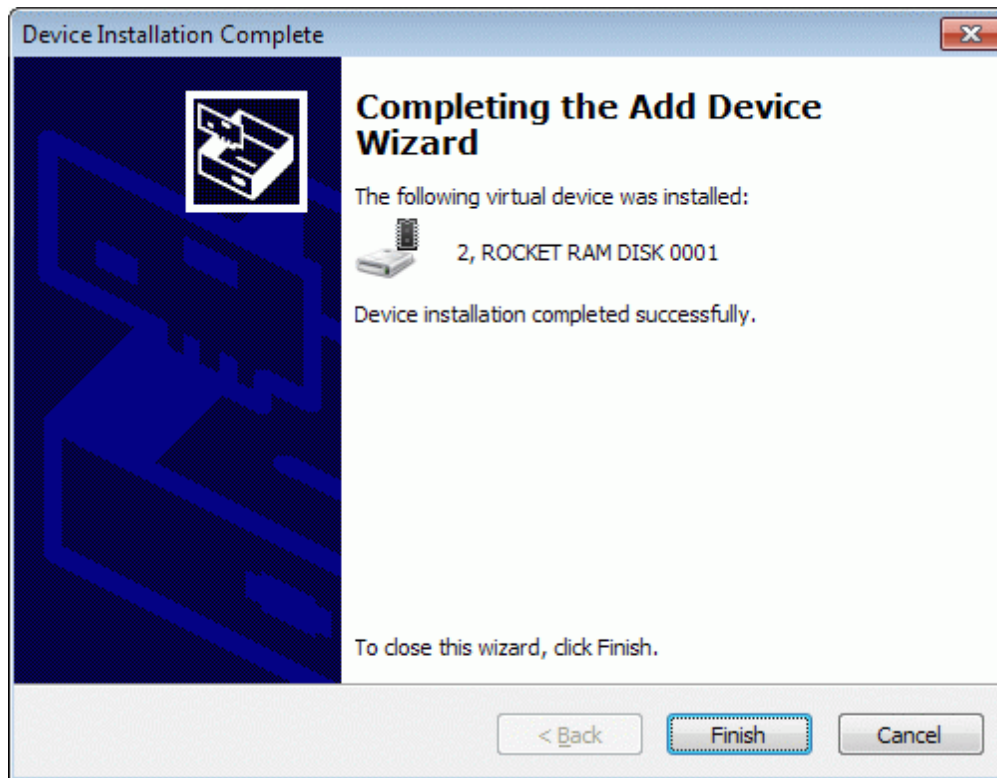
Select **Create formatted disk** if you want new disk to be initially formatted so you could use it immediately (FAT file system is used). Otherwise you will have to format just created virtual disk drive manually.

Select **Automount this device** if you want new disk to be automatically re-created when you restart your PC. It means particular **Local RAM disk** device becomes available right after your PC boots and Windows starts.

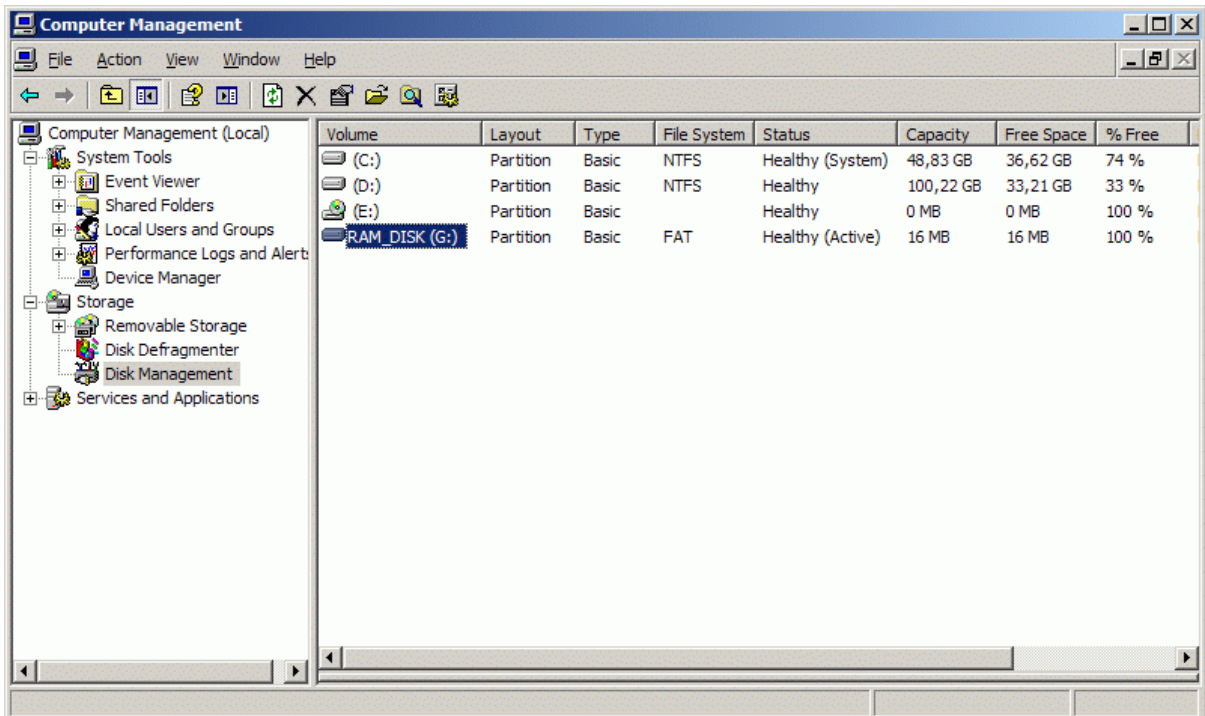
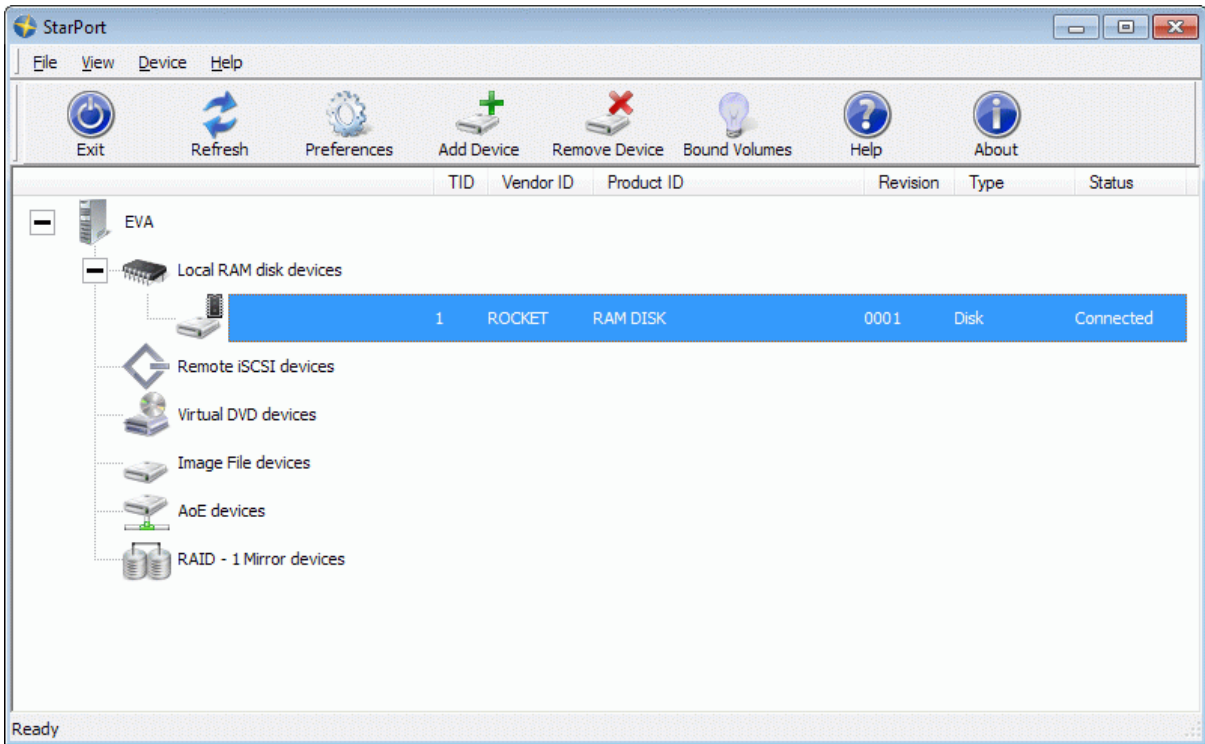


Press **Next** button to continue.

On the last step of the **New Device Installation Wizard** confirm the installation results. If the new **Local RAM disk** device was installed correctly it should appear as a new disk volume in your system.

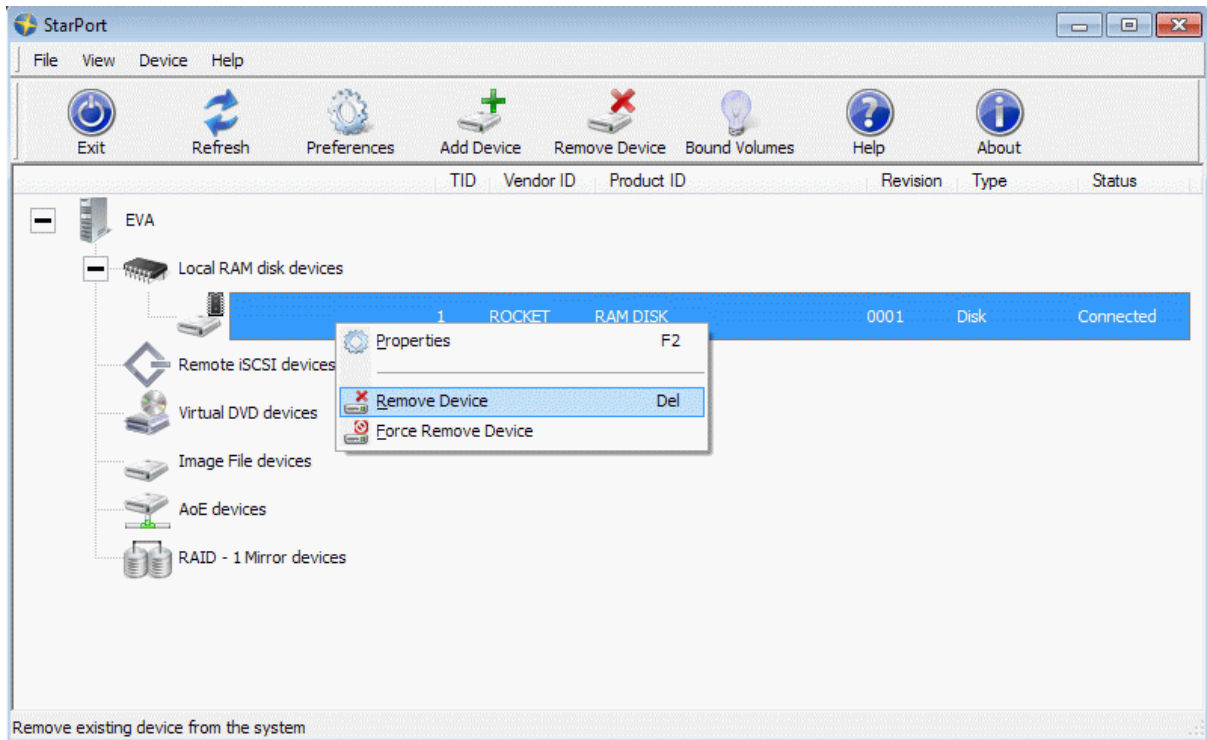


Press **Finish** button.



Removing existing device

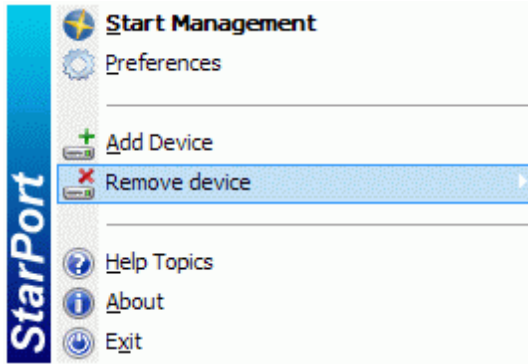
In the **StarPort** control application please select the device you wish to remove and click it with the right mouse button.



Select **Remove Device** menu item from the pop-up menu that appears.

Use the **Force Remove Device** if you cannot remove a device in a normal way (e.g. it is locked by some application or process). However it is not recommended to use the **Force Remove Device** feature as it may cause loss of the data and general system instability.

Alternatively you can remove a device in such a way: right click the **StarPort** icon in the system tray and find the device you wish to remove.



Contacts

Support: www.starwindsoftware.com/support

Support Forum: www.starwindsoftware.com/forums

Sales E-mail: sales@starwindsoftware.com

US Headquarters

Phone: 617-449-7717

Fax: 617-505-5845

EMEA: 1-888-532-2203

StarWind Software Inc.

40 Mall Rd., Burlington

MA 01803, USA

www.starwindsoftware.com