

StarPort iSCSI and ATA-over-Ethernet Initiator: Using Image File device



www.starwindsoftware.com

Copyright © StarWind Software 2008-2009. All rights reserved.

COPYRIGHT

Copyright © StarWind Software 2008-2009. All rights reserved. No part of this publication may be reproduced, stored in a retrieval system, or transmitted in any form or by any means, electronic, mechanical, photocopying, recording or otherwise, without the prior written consent of StarWind Software.

TRADEMARKS

“StarPort”, “StarWind Software” and the StarPort and the StarWind Software logos are trademarks of StarWind Software which may be registered in some jurisdictions. All other trademarks are owned by their respective owners.

CHANGES

The material in this document is for information only and is subject to change without notice. While reasonable efforts have been made in the preparation of this document to assure its accuracy, StarWind Software assumes no liability resulting from errors or omissions in this document, or from the use of the information contained herein. StarWind Software reserves the right to make changes in the product design without reservation and without notification to its users.

TECHNICAL SUPPORT AND SERVICES

If you have questions about installing or using this software, check this and other documents first - you will find answers to most of your questions here or there. If you need further assistance, please contact us.

Table of Contents

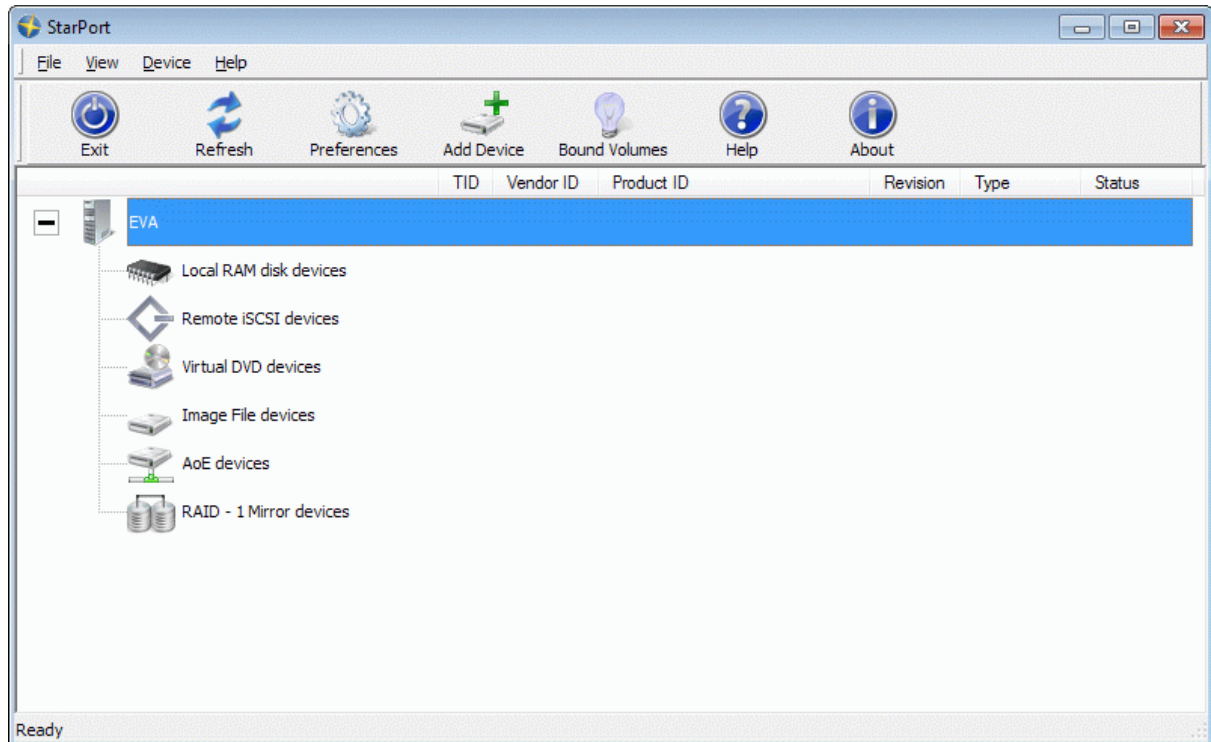
Introduction	4
Adding new device.....	5
Removing existing device.....	14

Guide

Introduction

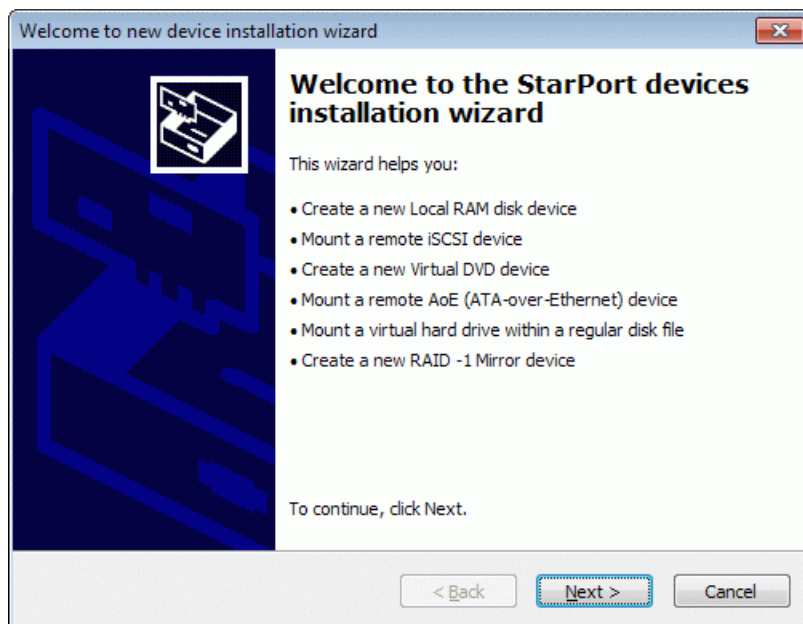
Adding new device

Launch the **StarPort** control application by selecting **Start->All Programs->StarWind Software->StarPort->StarPort**. After the program is started its icon appears in the system tray. Double click the icon with the left mouse button or single click it with the right mouse button and select **Start Management** item from the pop-up menu. You'll see a picture like the one below:



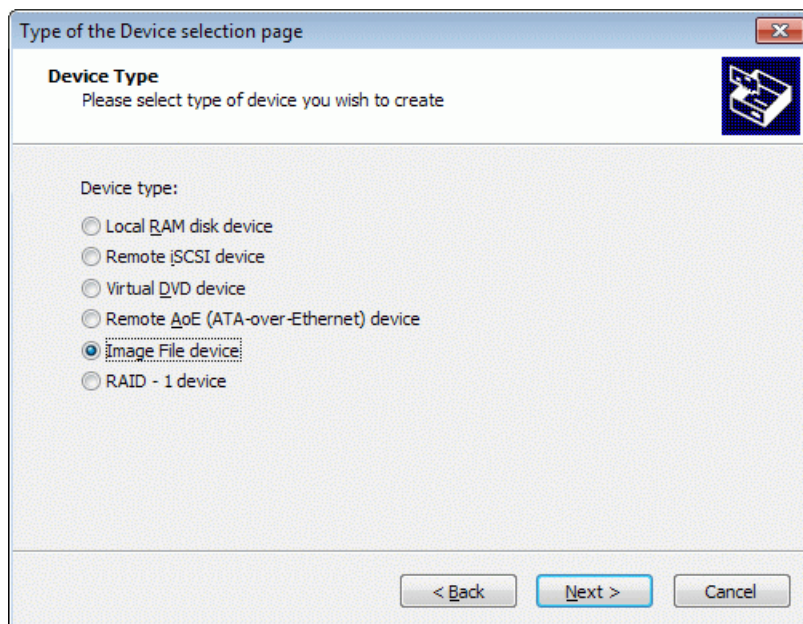
Select **Add Device** menu item from **Device** drop down menu or just press **Add Device** button on the application tray bar. New device installation wizard (see next page for the image) will appear.

On the first step of the **New Device Installation Wizard** please read the introduction instructions.



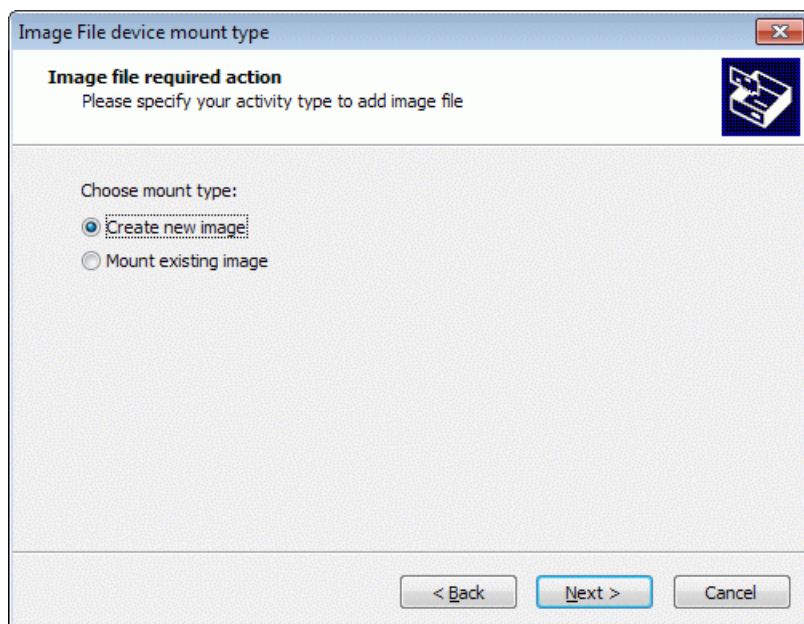
Press **Next** button to continue.

On the second step of the **New Device Installation Wizard** select device type you wish to install. To add a **Image File** device select **Image File** device.



Press **Next** button to continue.

On the third step of the **New Device Installation Wizard** select either **Create new image** to create new image file or select **Mount existing image** to specify existing image file.



Press **Next** button to continue.

On the fourth step of the **New Device Installation Wizard** specify the parameters of the Image File device you wish to add:

Image file location - specify the path to the IMG image, which you wish to mount (create and then mount) as an Image File device.

Image size in MBs - the size of the disk (IMG file) you add.

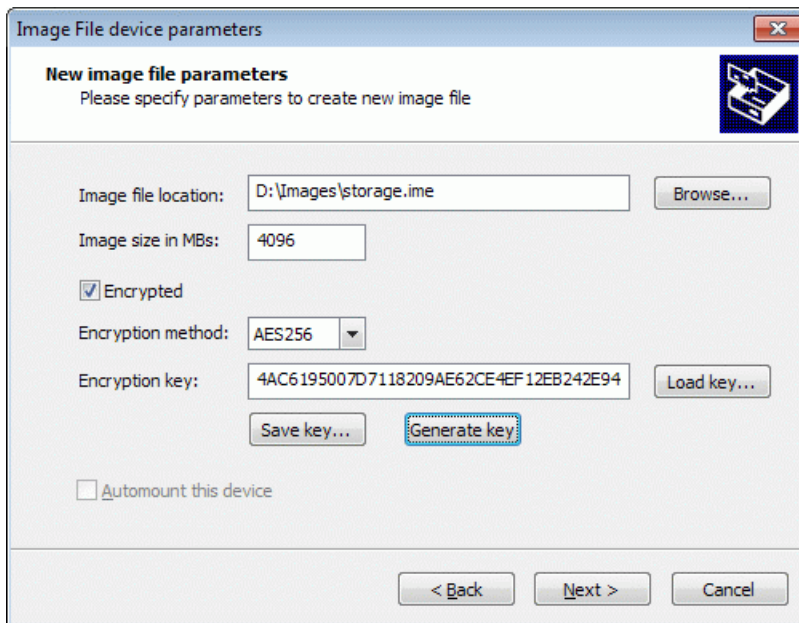
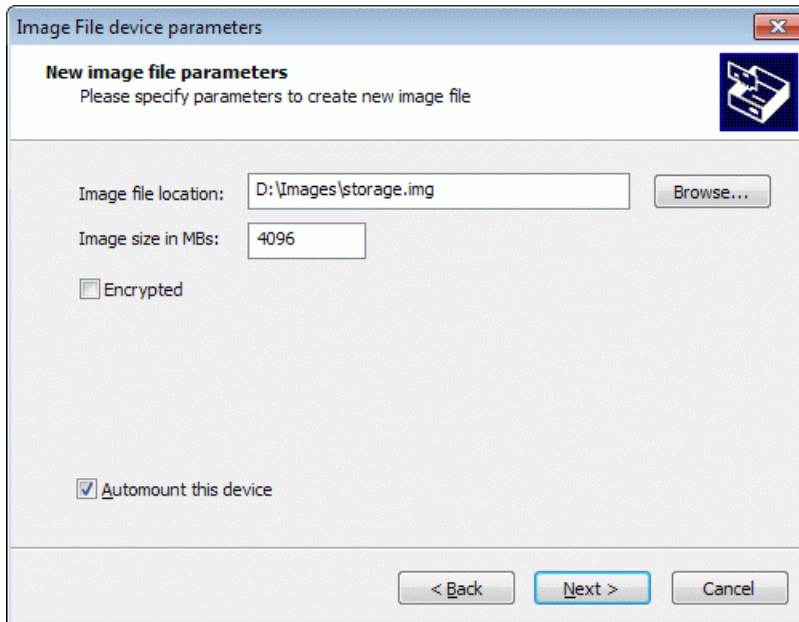
Encrypted – select to create encrypted Image File device.

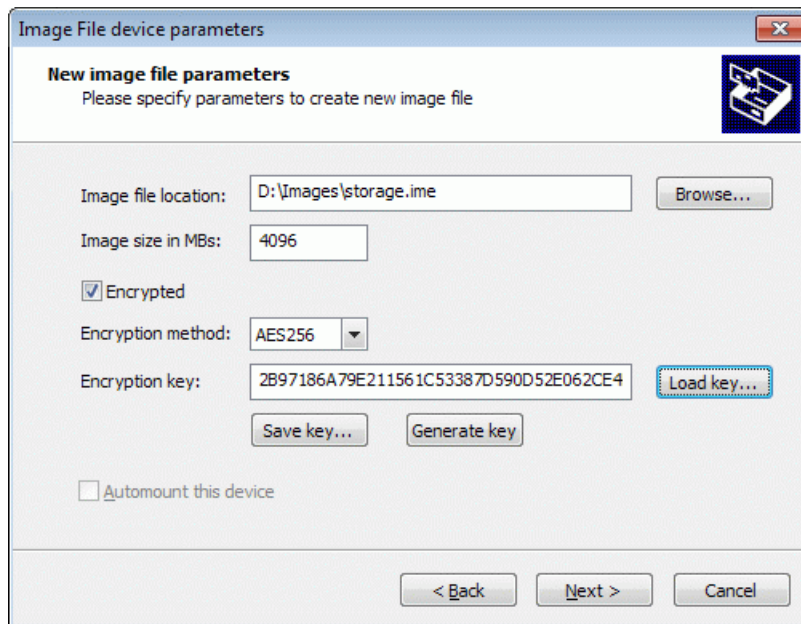
Encryption method – select algorithm to encrypt data.

Encryption key – type in encryption key. You may also generate key, load existing key from file and save the key. If you are mounting existing image, please specify the key it was encrypted with.

Note: Please always save your encryption keys because you'll not be able to recreate Image File device and access its data without it.

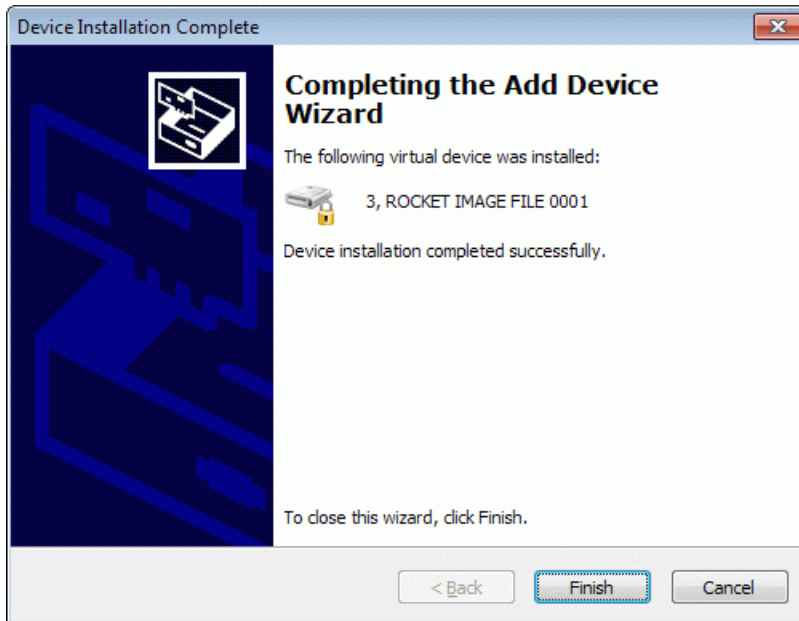
Automount disk - if selected, the Image File device is automatically re-created when you restart your PC. It means that an Image File device becomes available right after your PC boots and Windows starts. This option is available only for non-encrypted disks.



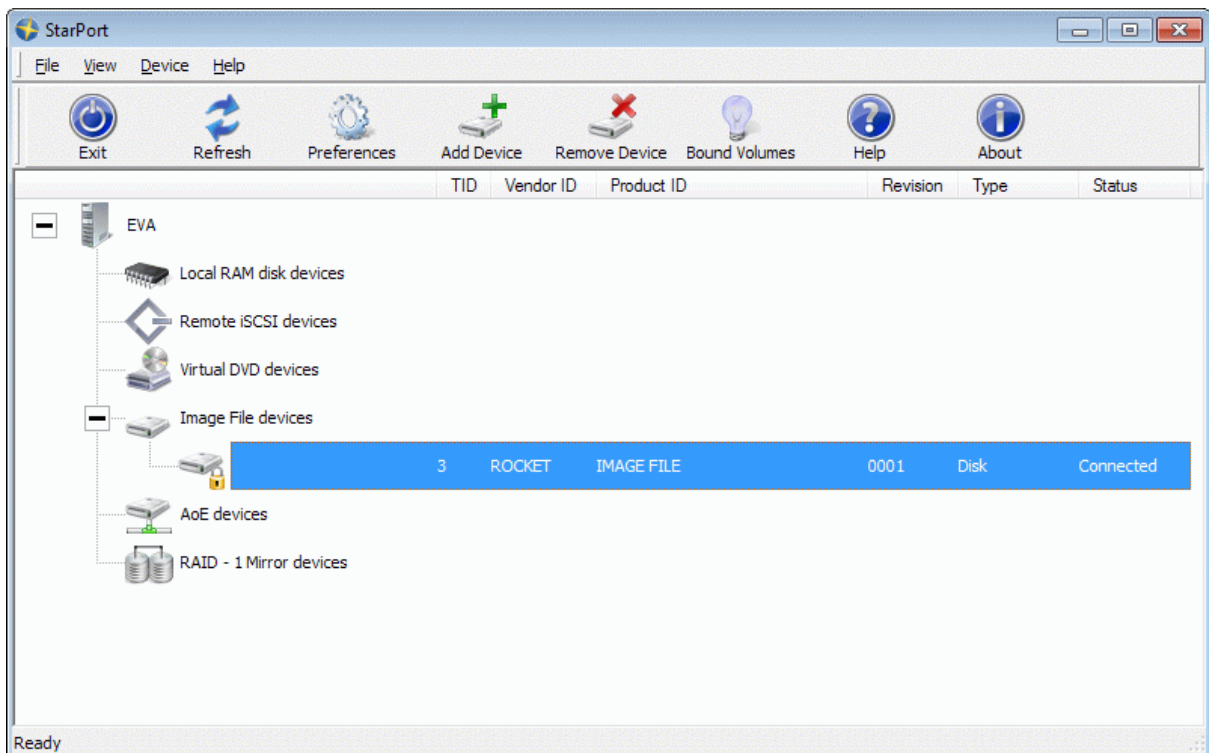


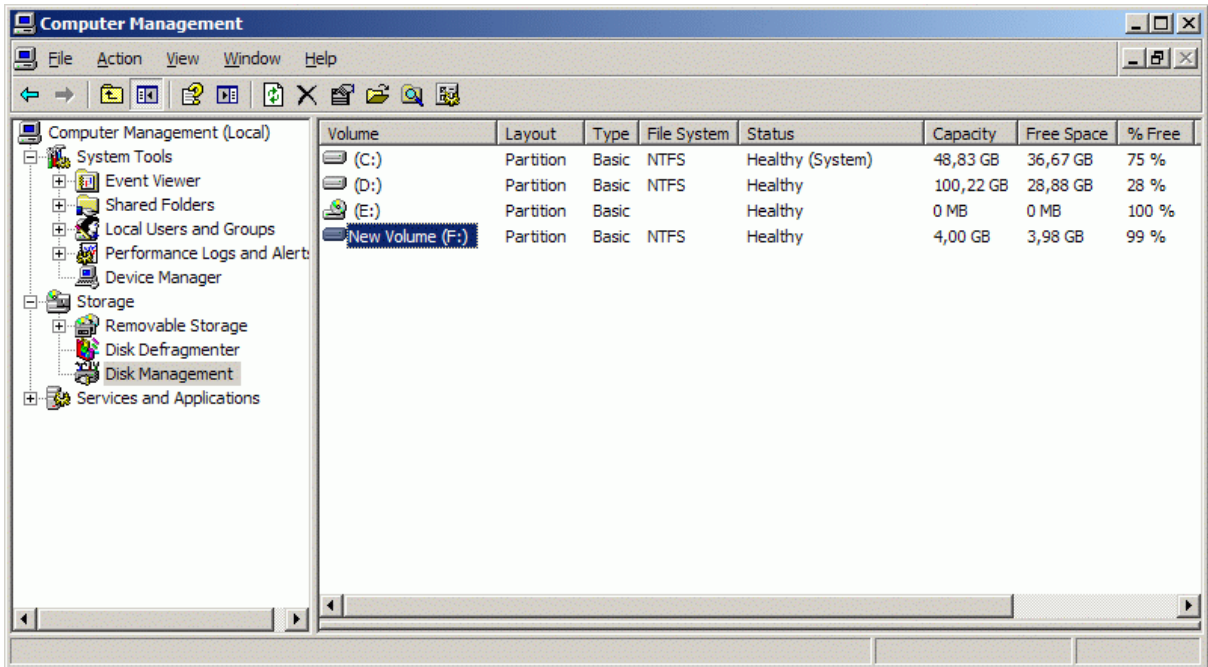
Press **Next** to continue.

On the last step of the **New Device Installation Wizard** confirm the installation results. If the new Image File device was installed correctly, it should appear as a new disk volume in your system.



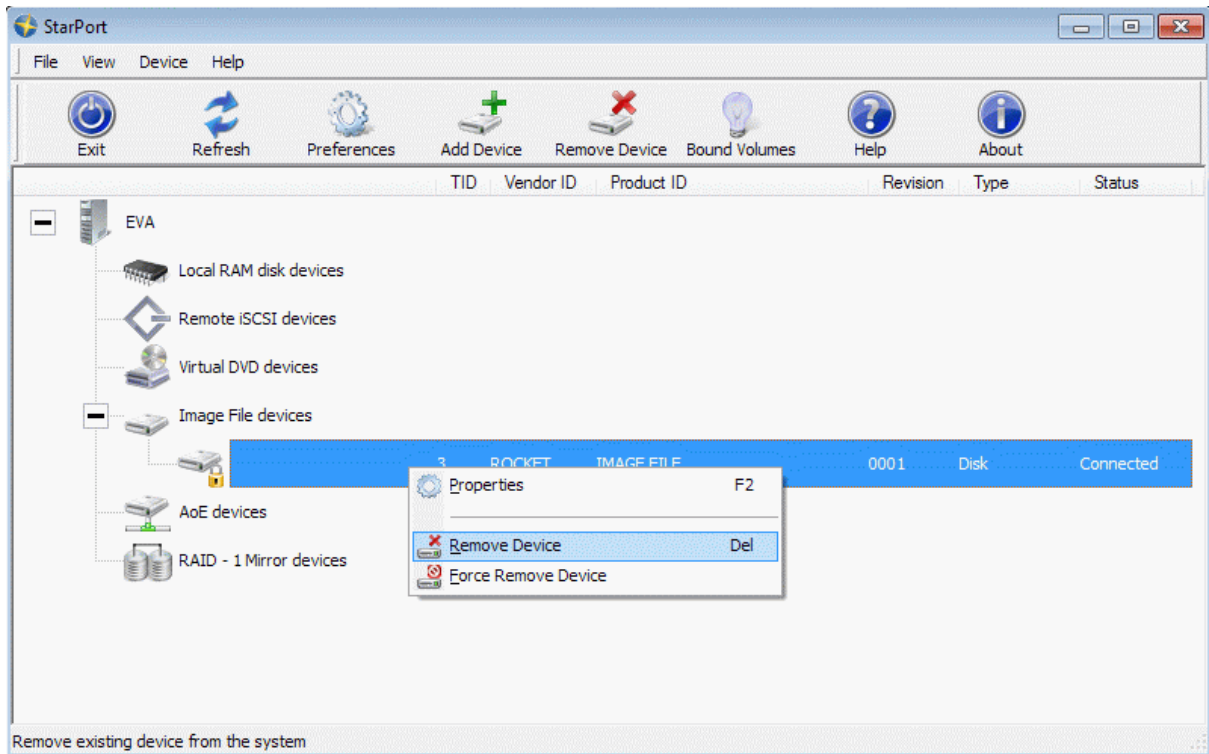
Press **Finish** button.





Removing existing device

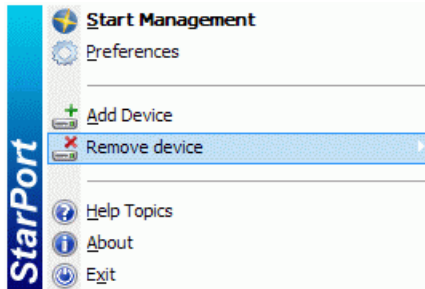
In the **StarPort** control application please select the device you wish to remove and click it with the right mouse button.



Select **Remove Device** menu item from the pop-up menu that appears.

Use the **Force Remove Device** if you cannot remove a device in a normal way (e.g. it is locked by some application or process). However it is not recommended to use the **Force Remove Device** feature as it may cause loss of the data and general system instability.

Alternatively you can remove a device in such a way: right click the **StarPort** icon in the system tray and find the device you wish to remove.



Contacts

Support: www.starwindsoftware.com/support

Support Forum: www.starwindsoftware.com/forums

Sales E-mail: sales@starwindsoftware.com

US Headquarters

Phone: 617-449-7717

Fax: 617-505-5845

EMEA: 1-888-532-2203

StarWind Software Inc.

40 Mall Rd., Burlington

MA 01803, USA

www.starwindsoftware.com