

StarPort iSCSI and ATA-over-Ethernet Initiator: Using as ATA-over-Ethernet Initiator



www.starwindsoftware.com

Copyright © StarWind Software 2008-2009. All rights reserved.

COPYRIGHT

Copyright © StarWind Software 2008-2009. All rights reserved. No part of this publication may be reproduced, stored in a retrieval system, or transmitted in any form or by any means, electronic, mechanical, photocopying, recording or otherwise, without the prior written consent of StarWind Software.

TRADEMARKS

“StarPort”, “StarWind Software” and the StarPort and the StarWind Software logos are trademarks of StarWind Software which may be registered in some jurisdictions. All other trademarks are owned by their respective owners.

CHANGES

The material in this document is for information only and is subject to change without notice. While reasonable efforts have been made in the preparation of this document to assure its accuracy, StarWind Software assumes no liability resulting from errors or omissions in this document, or from the use of the information contained herein. StarWind Software reserves the right to make changes in the product design without reservation and without notification to its users.

TECHNICAL SUPPORT AND SERVICES

If you have questions about installing or using this software, check this and other documents first - you will find answers to most of your questions here or there. If you need further assistance, please contact us.

Table of Contents

Introduction.....	4
Adding new device.....	5
Removing existing device.....	13

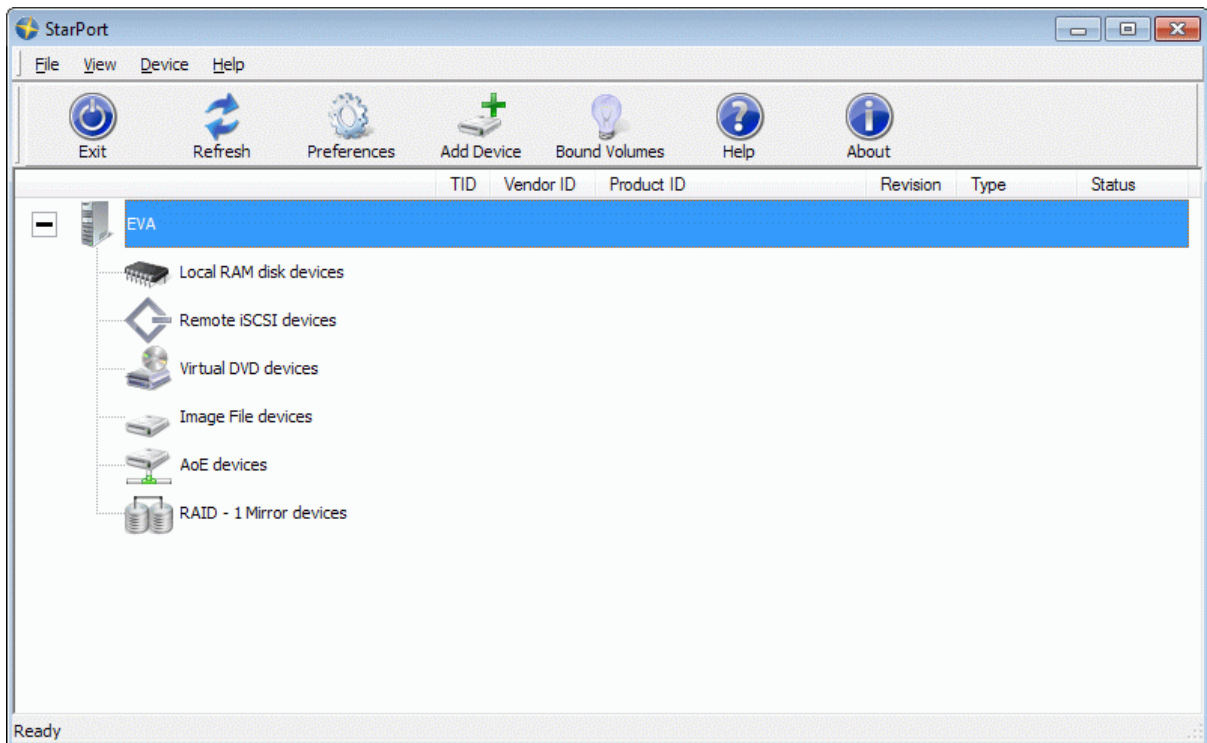
Guide

Introduction

StarPort fully implements ATA-over-Ethernet client side protocol enabling you to connect to remote storage appliances such as disk arrays, tape drives, DVD-ROM image libraries and so on. **StarPort** AoE (ATA-over-Ethernet) support enables connectivity to remote storage devices over a standard Ethernet network, regardless of where the device resides; in the next room or on another continent (if proper bridging is used of course). With **StarPort** and ATA-over-Ethernet you can gain full access to a device, as though the device was installed on a local machine. Re-partition; format a remote hard disk drive with any file system, burn to a remote high-capacity Blu-Ray or HD-DVD burner, implement automatic backup procedures to a remote tape drive, access remote storage devices connected through Serial and Parallel ATA and SCSI, Fibre Channel, USB or FireWire and more.

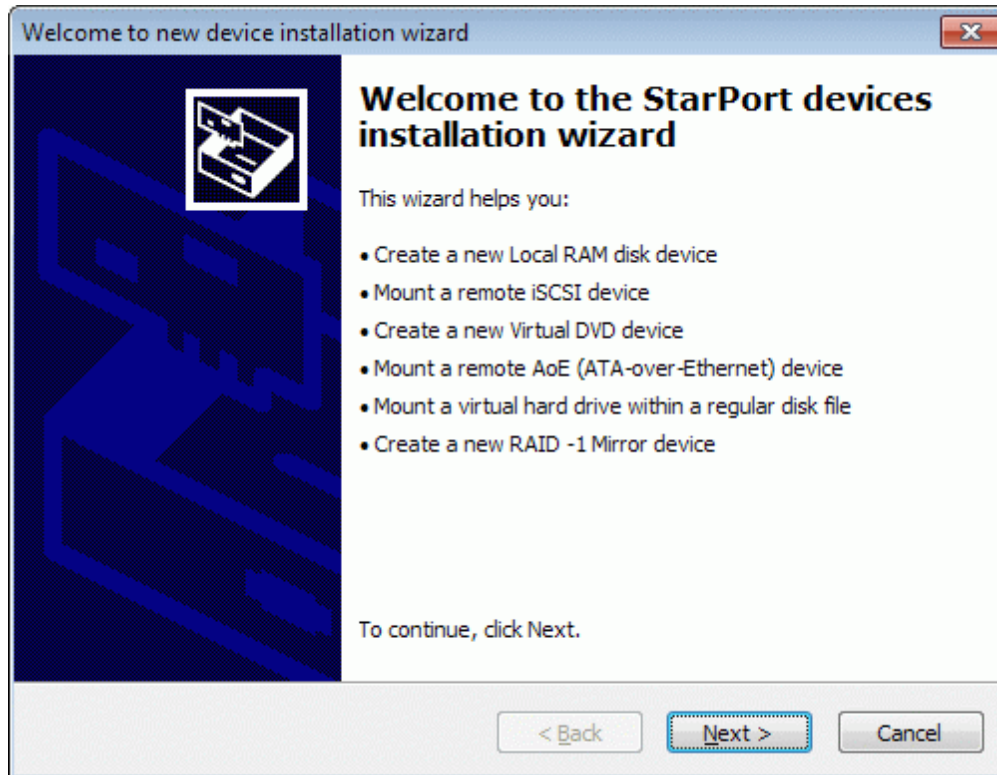
Adding new device

Launch the **StarPort** control application by selecting **Start->All Programs->StarWind Software->StarPort->StarPort**. After the program is started its icon appears in the system tray. Double click the icon with the left mouse button or single click it with the right mouse button and select **Start Management** item from the pop-up menu. You'll see a picture like the one below:



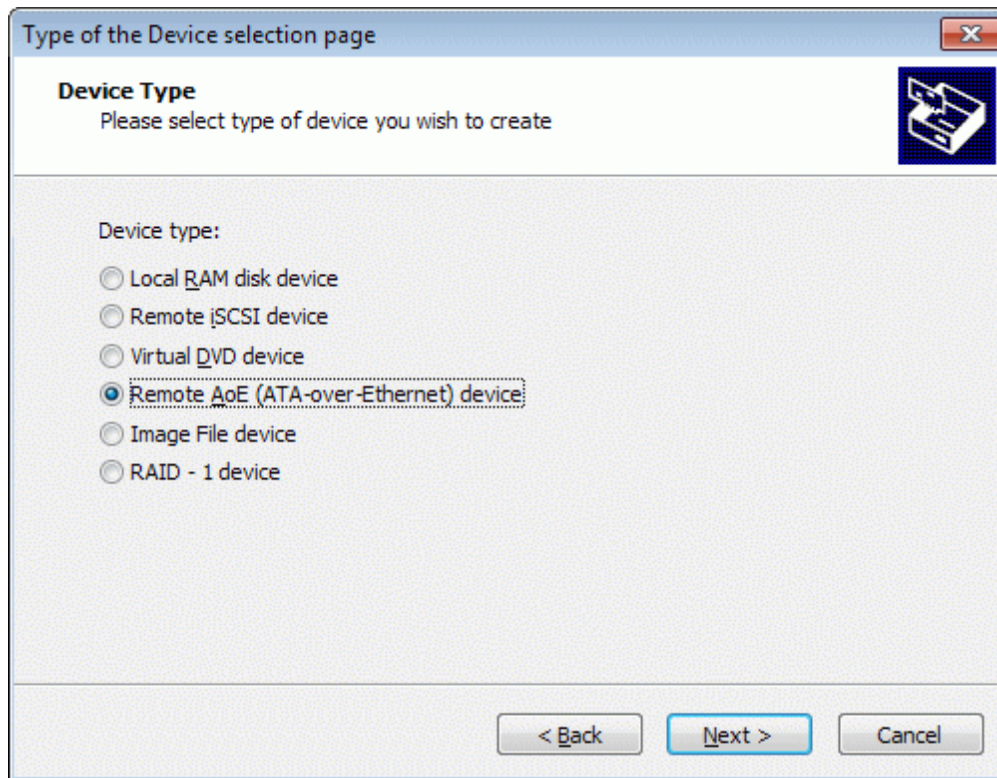
Select **Add Device** menu item from **Device** drop down menu or just press **Add Device** button on the application tray bar. New device installation wizard (see next page for the image) will appear.

On the first step of the **New Device Installation Wizard** please read the introduction instructions.



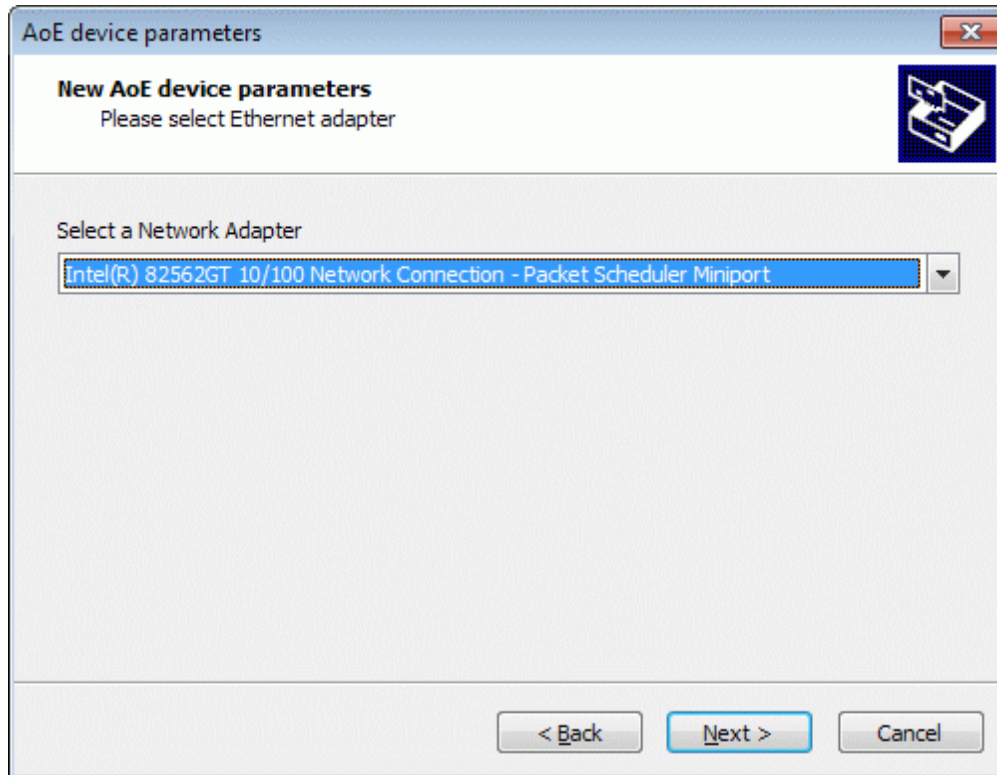
Press **Next** button to continue.

On the second step of the **New Device Installation Wizard** select device type you wish to install. To add an AoE device please select **Remote AoE (ATA-over-Ethernet)** device.



Press **Next** button to continue.

On the third step of the **New Device Installation Wizard** please select network adapter you wish to use to connect to the AoE device.



Press **Next** button to continue.

On the fourth step of the **New Device Installation Wizard** please specify the parameters of the AoE device you wish to add (see next page for the image):

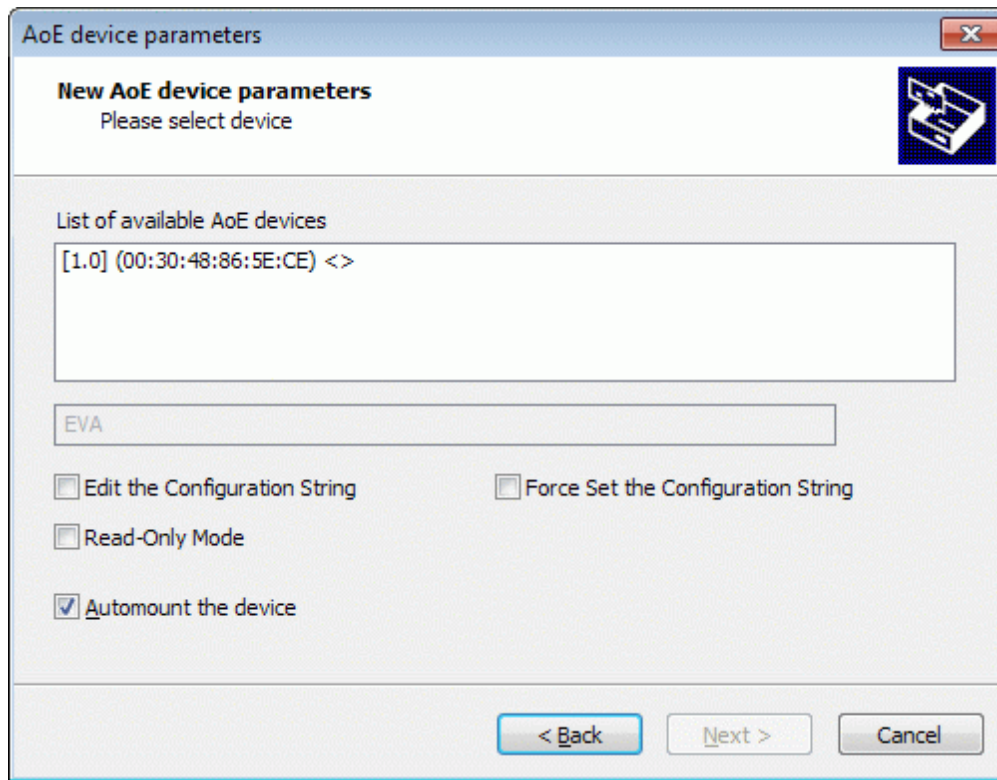
Select device you wish to add from the list of the available AoE devices.

If **Edit the Configuration String** option is selected you can specify custom AoE configuration string. By default **StarPort** uses exact PC name as the configuration string. You should change the configuration string only if particular AoE device could not be mounted successfully and you are sure specified default configuration string is wrong.

Select **Force Set the Configuration String** option to overwrite the configuration string of the AoE device. In this case device's existing configuration string is changed and device is mounted with a new configuration string.

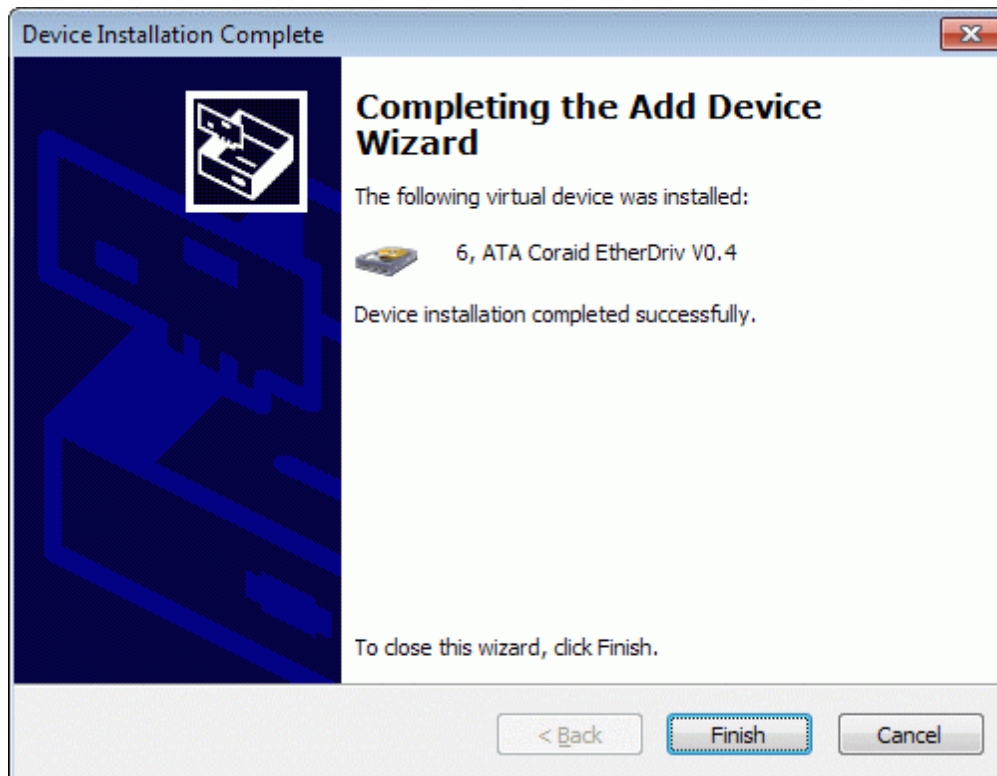
Select **Automount the device** to automatically re-create it when you restart your PC. It means an AoE device becomes available right after your PC boots and Windows starts.

Select **Read-Only Mode** if you wish to enable read-only access to the AoE device that you mount.

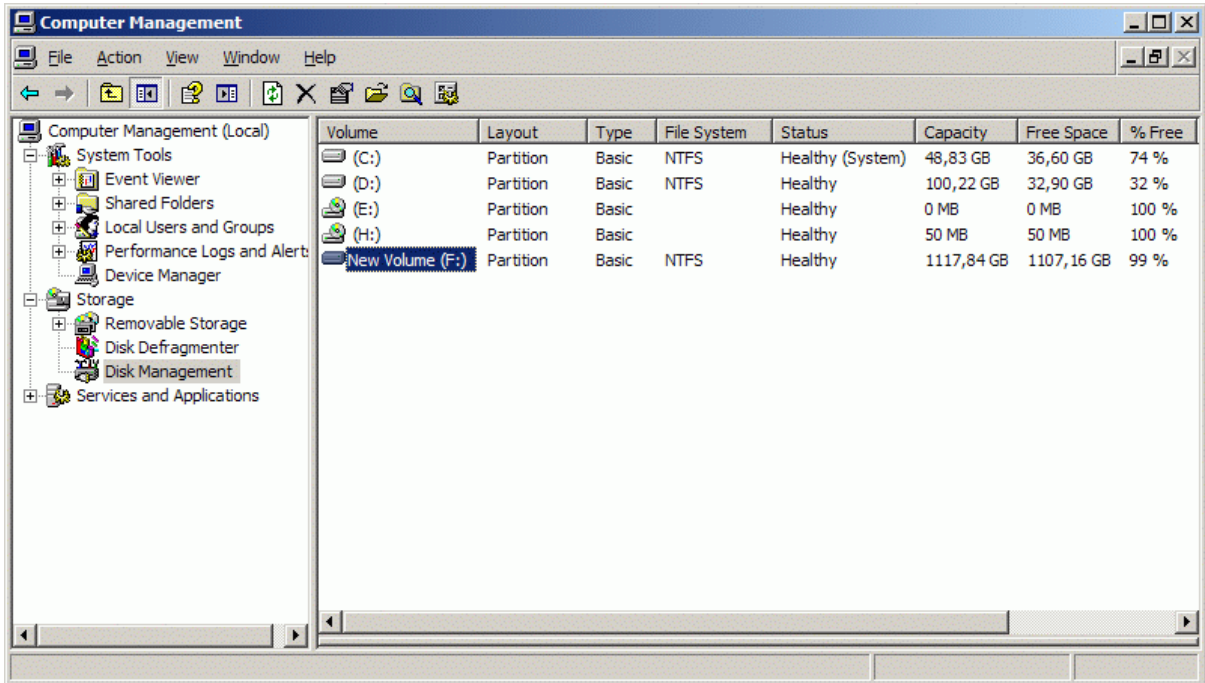
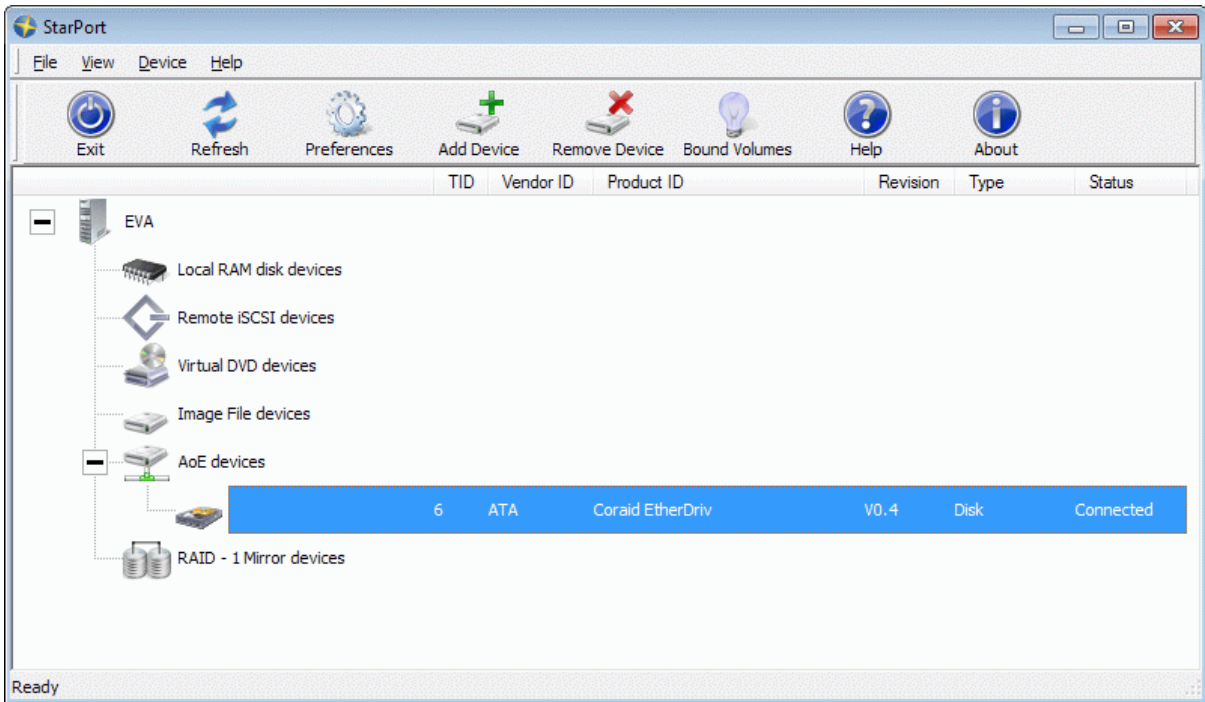


Press **Next** button to continue.

On the last step of the **New Device Installation Wizard** please confirm the installation results. If the new AoE device was installed correctly, it should appear as a new disk volume in your system. Right after that you will be able to access installed AoE device as an ordinary disk volume.

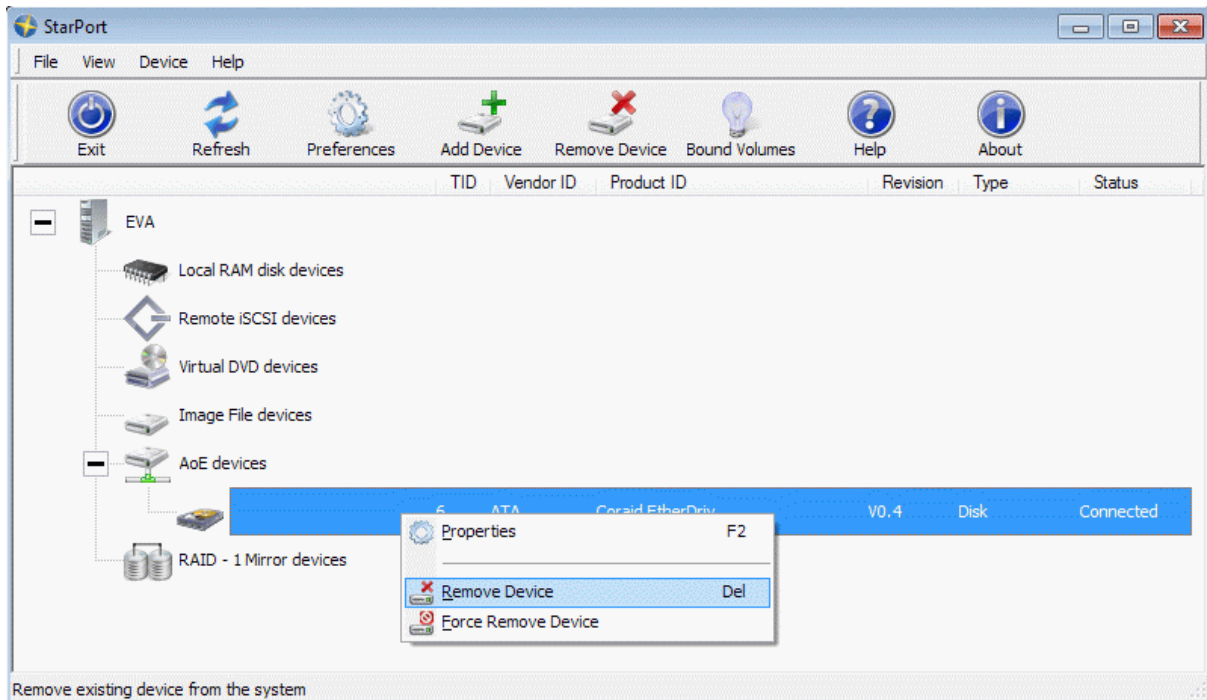


Press **Finish** button.



Removing existing device

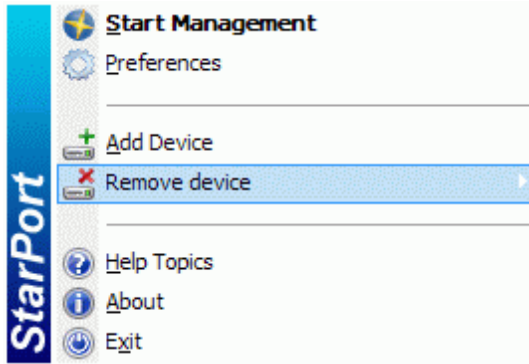
In the **StarPort** control application please select the device you wish to remove and click it with the right mouse button.



Select **Remove Device** menu item from the pop-up menu that appears.

Use the **Force Remove Device** if you cannot remove a device in a normal way (e.g. it is locked by some application or process). However it is not recommended to use the **Force Remove Device** feature as it may cause loss of the data and general system instability.

Alternatively you can remove a device by doing the following: right click **StarPort** icon in the system tray and find the device you wish to remove.



Contacts

Support: www.starwindsoftware.com/support

Support Forum: www.starwindsoftware.com/forums

Sales E-mail: sales@starwindsoftware.com

US Headquarters

Phone: 617-449-7717

Fax: 617-505-5845

EMEA: 1-888-532-2203

StarWind Software Inc.

40 Mall Rd., Burlington

MA 01803, USA

www.starwindsoftware.com